



Virginia Seat Belt Use

2022 Partner Meetings

In Collaboration with the:
Virginia Highway Safety Office
Virginia Department of Motor Vehicles



COVID-19 Impacts - Estimates of US Crash Fatality Changes in 2020 over 2019

14 - 18%

Ages 16 to 44

11 - 15%

Variety of
road types

15%

Unrestrained
in Passenger
Vehicles

11%

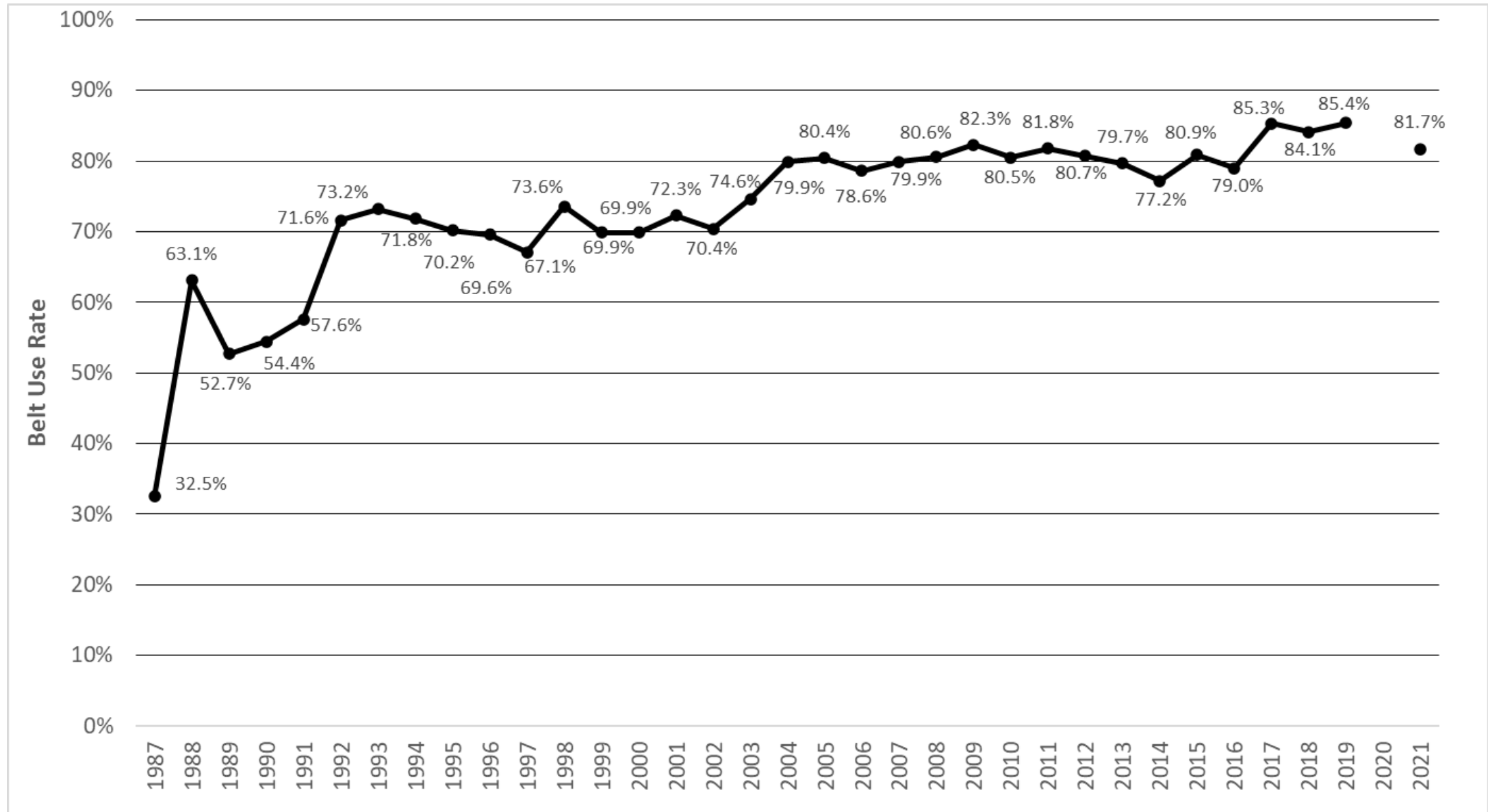
Speeding



STATE SEAT BELT SURVEY



Virginia Observed Belt Use Rate: History ('87 – 21)



Vehicle Miles Travelled (VMT)

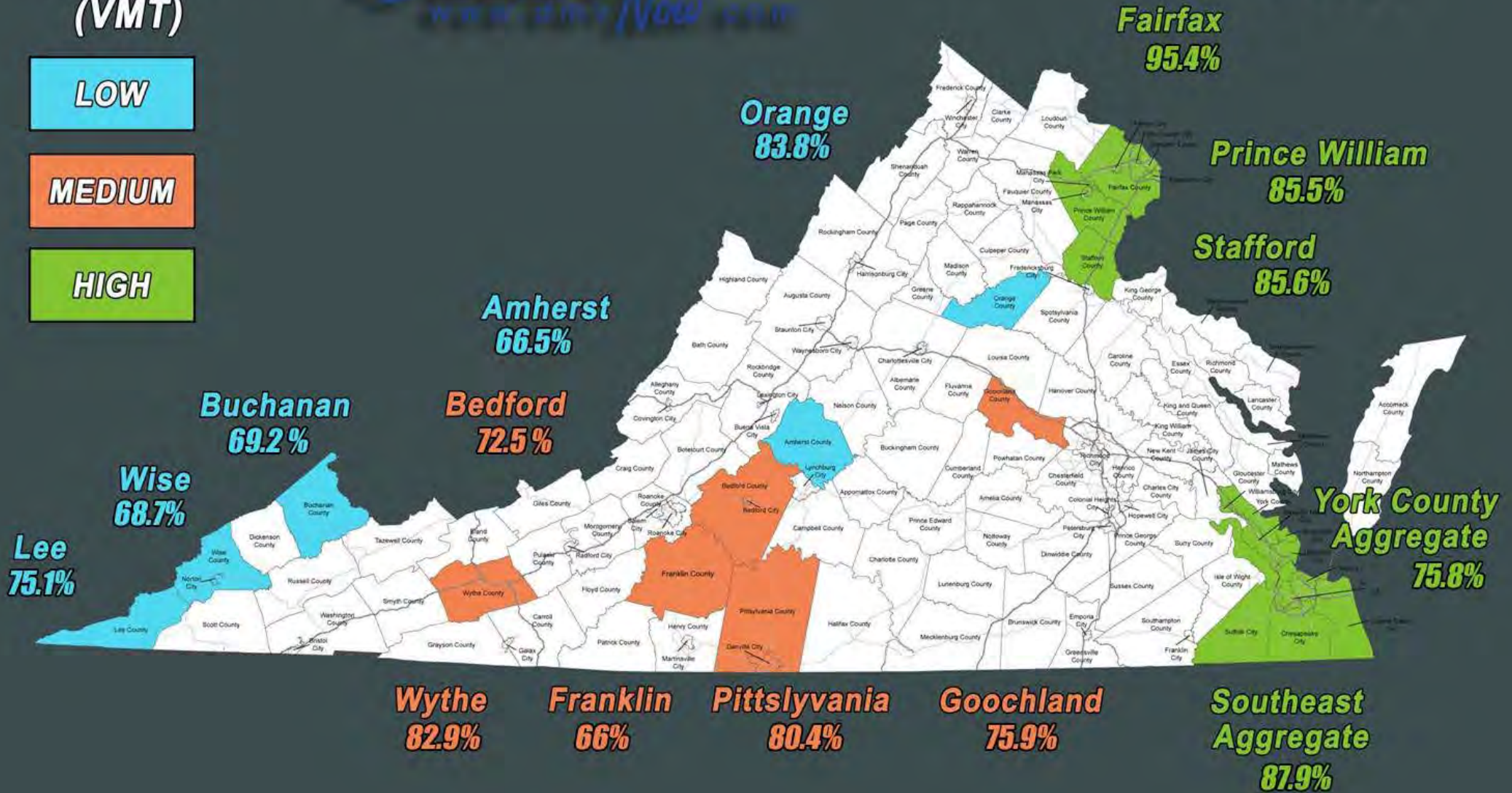


2021

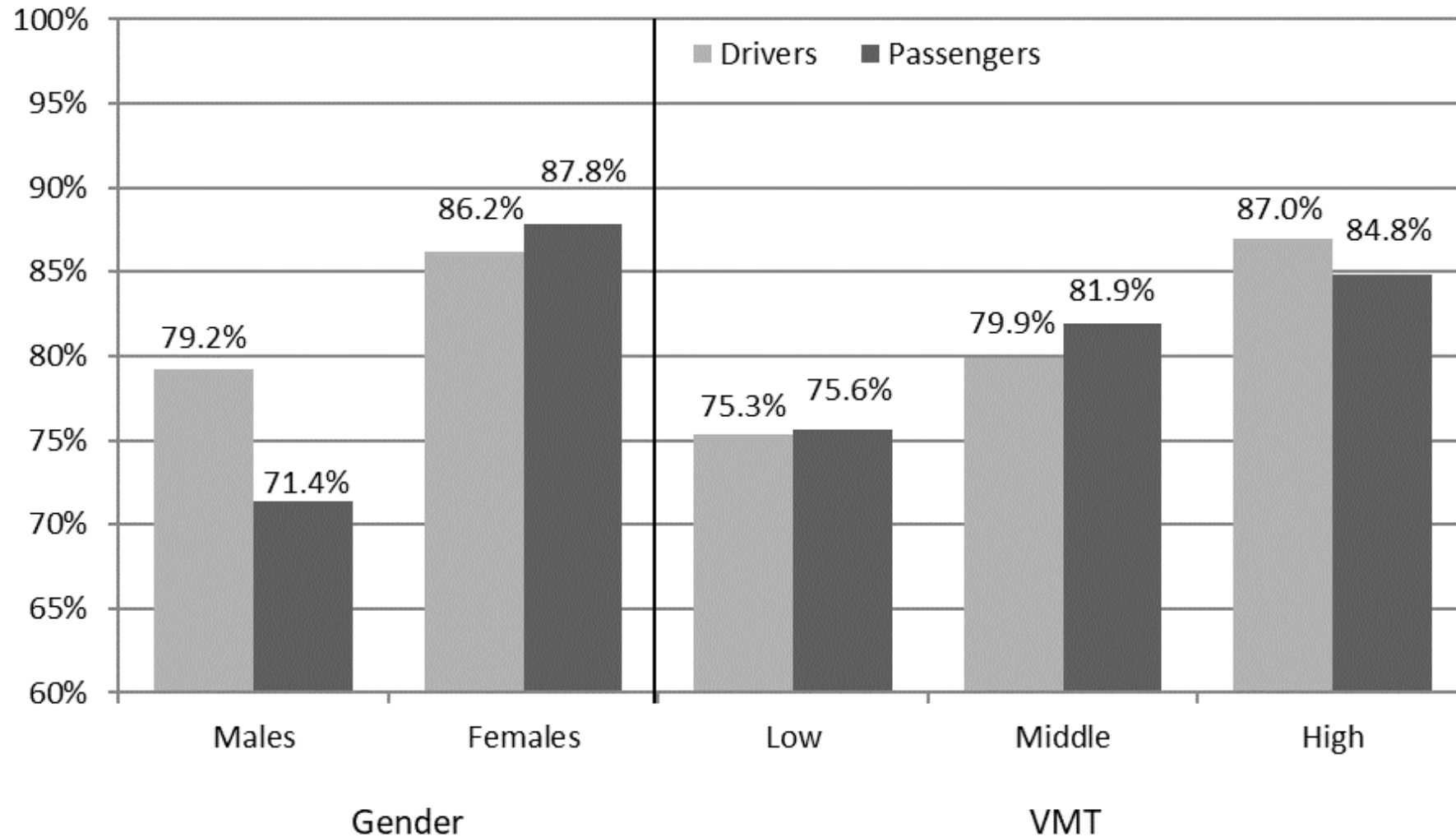
LOW

MEDIUM

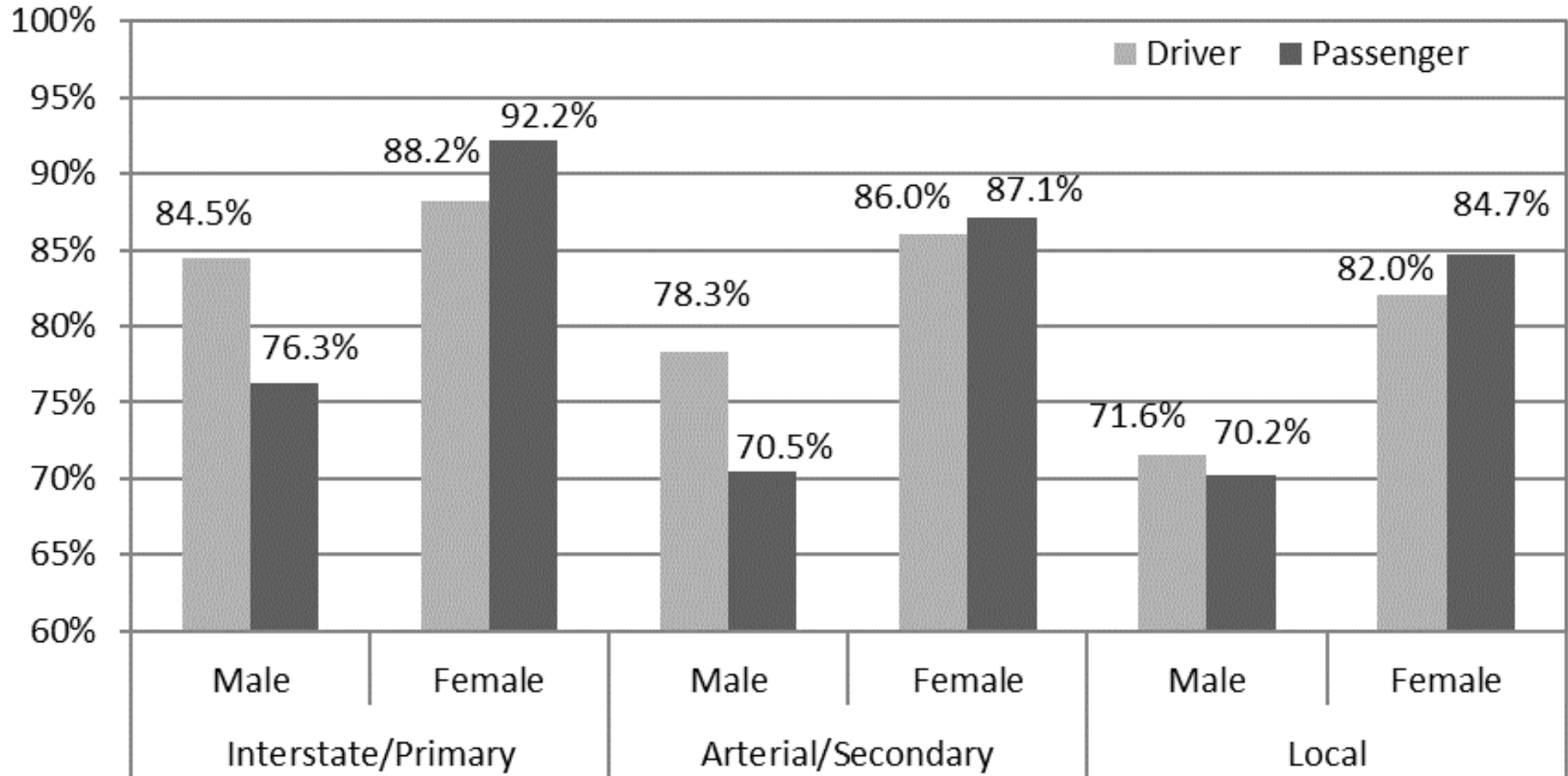
HIGH



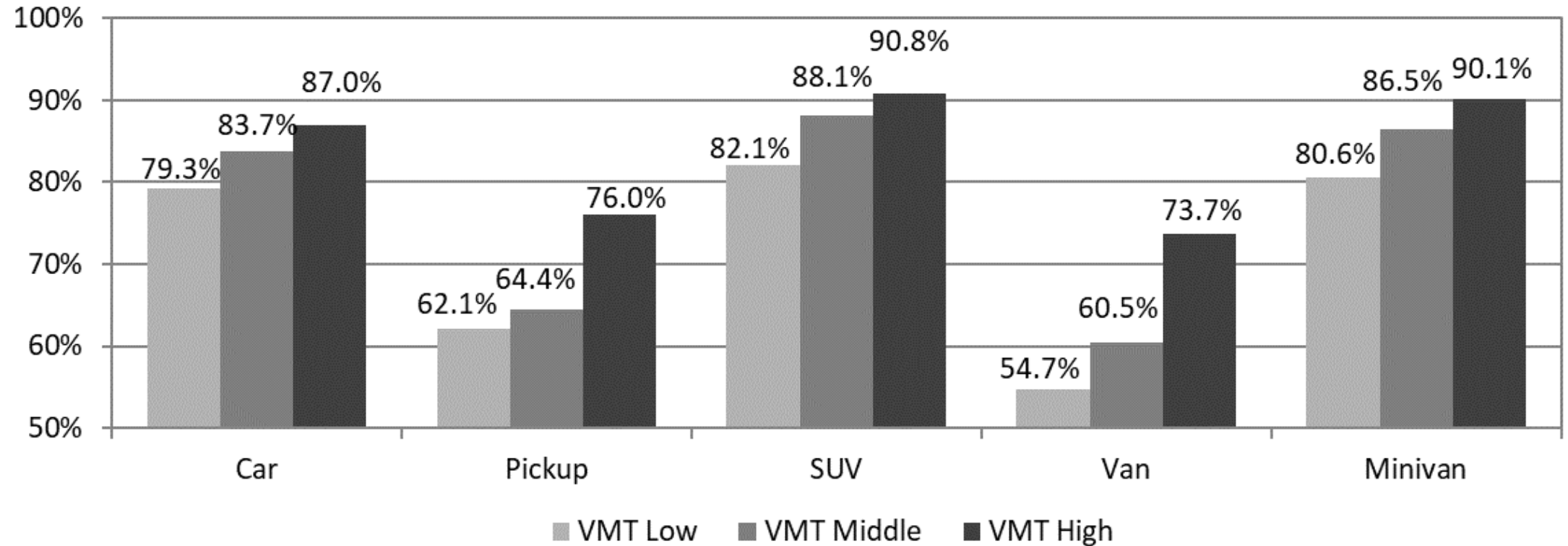
Overall Gender and VMT Belt Use Rates by Occupant Type 2021



Overall Road Type by Gender 2021



Overall Vehicle Type by VMT Level 2021



High VMT County Aggregates:

1. **Fairfax** (includes Fairfax County, Fairfax city, Alexandria, Falls Church)
2. **Southeast Aggregate** (includes Chesapeake, Norfolk, Portsmouth, Suffolk, Virginia Beach)
3. **York County Aggregate** (includes York County, Hampton, Newport News, Poquoson, Williamsburg)
4. Loudoun
5. Frederick (includes Frederick County, Winchester)

Middle VMT County Aggregates:

1. Rockbridge (includes Rockbridge County, Buena Vista, Lexington)
2. Botetourt
3. **Goochland**
4. Louisa
5. Mecklenburg

Low VMT County Aggregates:

1. Dinwiddie
2. Isle of Wight
3. Southampton (includes Southampton County, Franklin)
4. Tazewell
5. Brunswick

3-YEAR CENSUS PROJECT



2022 – 2024

- A full, 95+ county seat-belt survey in Virginia within 3 years
- Each year, 1/3 of the counties to be surveyed
- 1/3 determined by random sampling stratified by DMV district to ensure equal distributions around the Commonwealth
- 8 sites (arterials) randomly selected for observation in each county



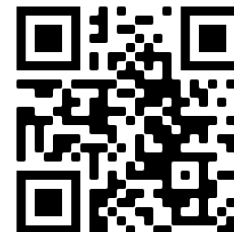
OLD DOMINION UNIVERSITY

The Graduate School

Bryan E. Porter

bporter@odu.edu

757.623.3259



Behavioral Psychology
Research & Analysis Team

In partnership with the
Virginia Highway Safety Office