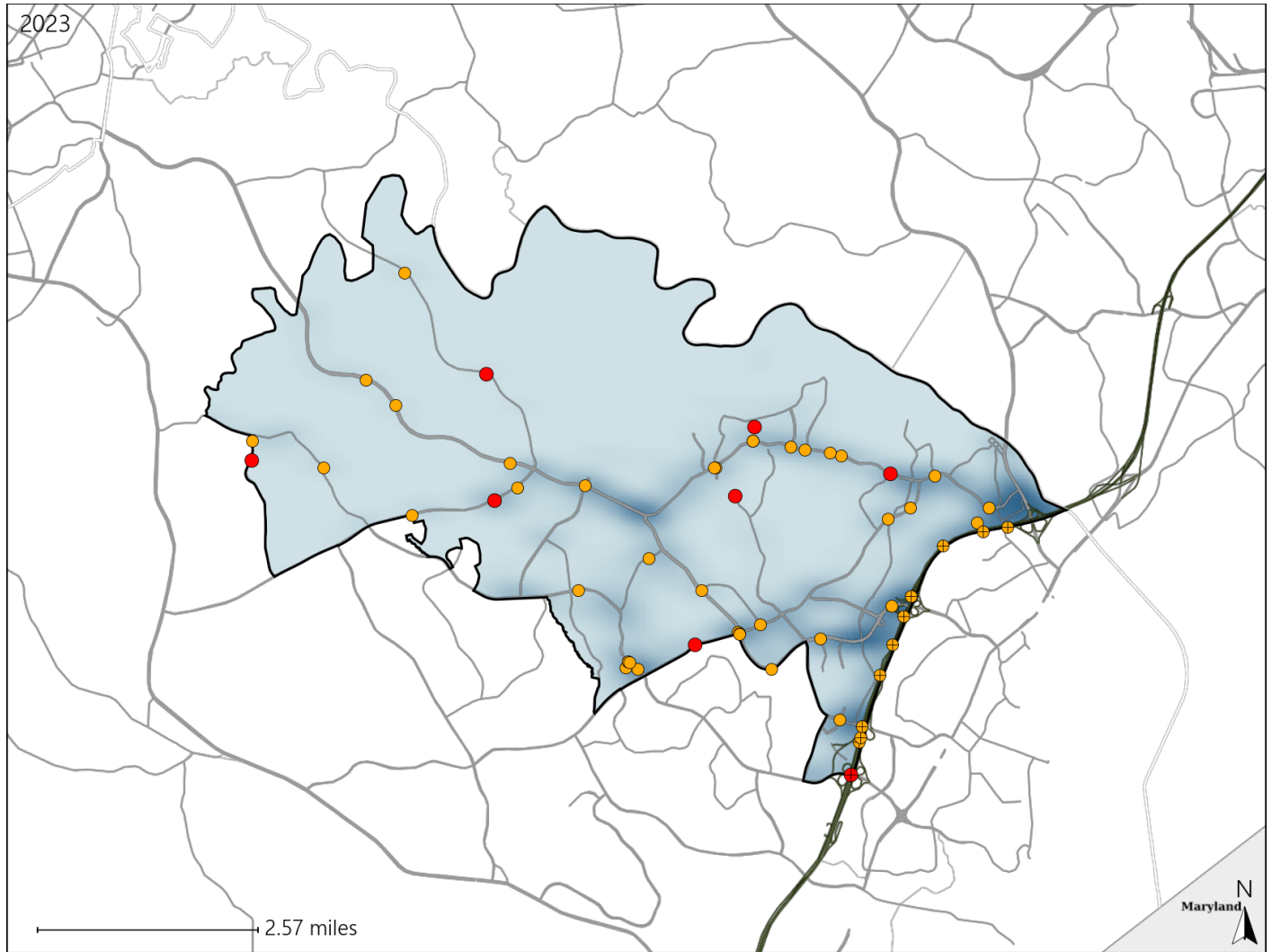


Virginia House District 25 Crash Statistics

Report Generated May, 2024

	Count	Highest Time Period(s)	Highest Day(s)	Highest Month(s)
Fatal Crashes	8	6:00pm - 8:59pm	Saturday	April • November
Resulting Fatalities	8	(38%)	(38%)	(50%)
Serious Injury Crashes	50	6:00pm - 8:59pm	Monday	June
		(28%)	(30%)	(16%)



House District 25 Crashes

Interstate Crashes

- Fatal
- Serious Injury

Non-interstate Crashes

- Fatal
- Serious Injury

The blue gradient represents the density of all crashes.

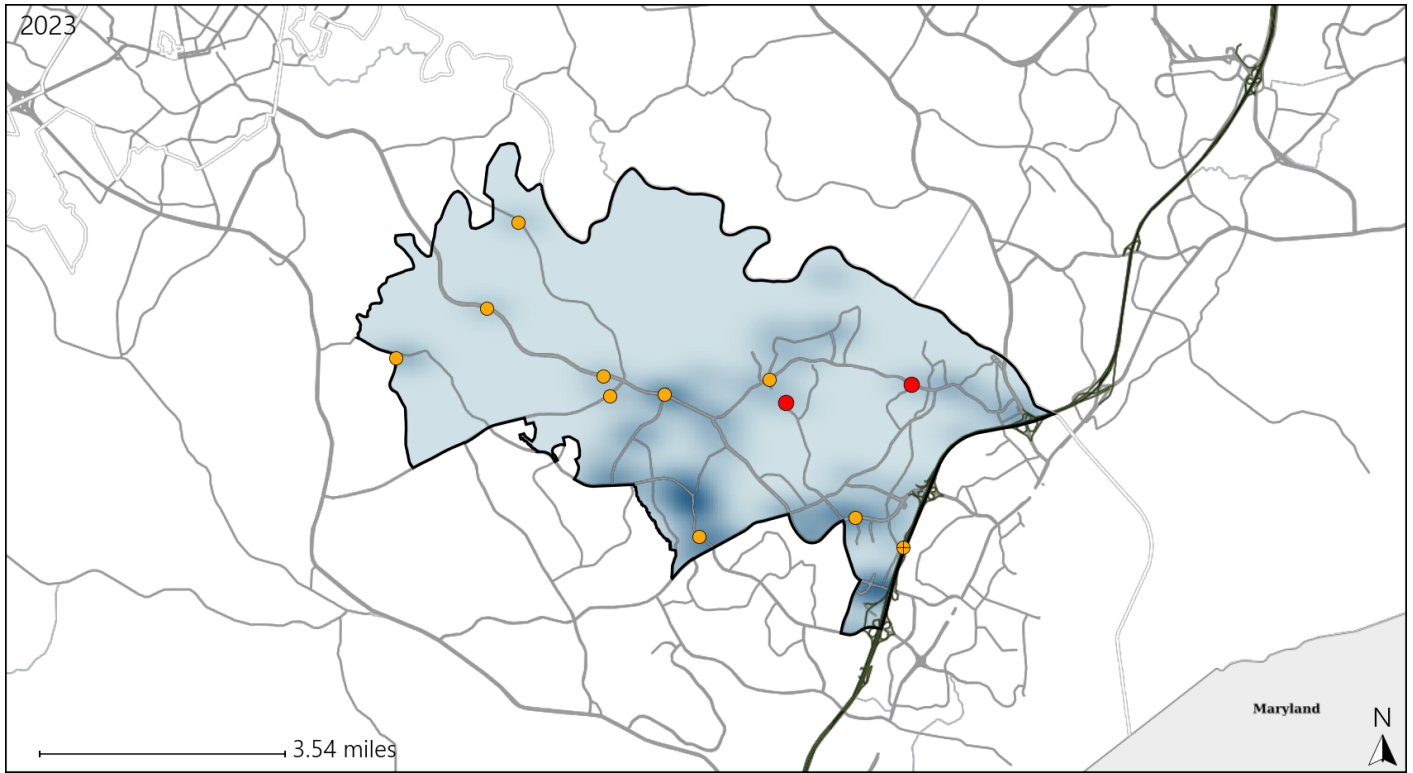


Available Crash Data - Calendar Year (CY)	CY 2020	CY 2021	CY 2022	CY 2023
Total Crashes	1027	1299	1326	1490
Fatal Crashes	2	6	5	8
Injury Crashes	259	377	417	476

Virginia House District 25 Alcohol Crash Statistics

Report Generated May, 2024

	Count	Highest Time Period(s)	Highest Day(s)	Highest Month(s)
Fatal Crashes	2	9:00pm - 11:59pm	Saturday	April • September
Resulting Fatalities	2	Midnight - 2:59am (100%)	(100%)	(100%)
Serious Injury Crashes	10	3:00pm - 5:59pm 6:00pm - 8:59pm (40%)	Monday (40%)	July • June (40%)



House District 25 Alcohol-Related Crashes

Interstate Crashes Non-interstate Crashes
 ● Fatal ● Fatal
 ⊕ Serious Injury ⊕ Serious Injury

The blue gradient represents the density of all alcohol-related crashes.

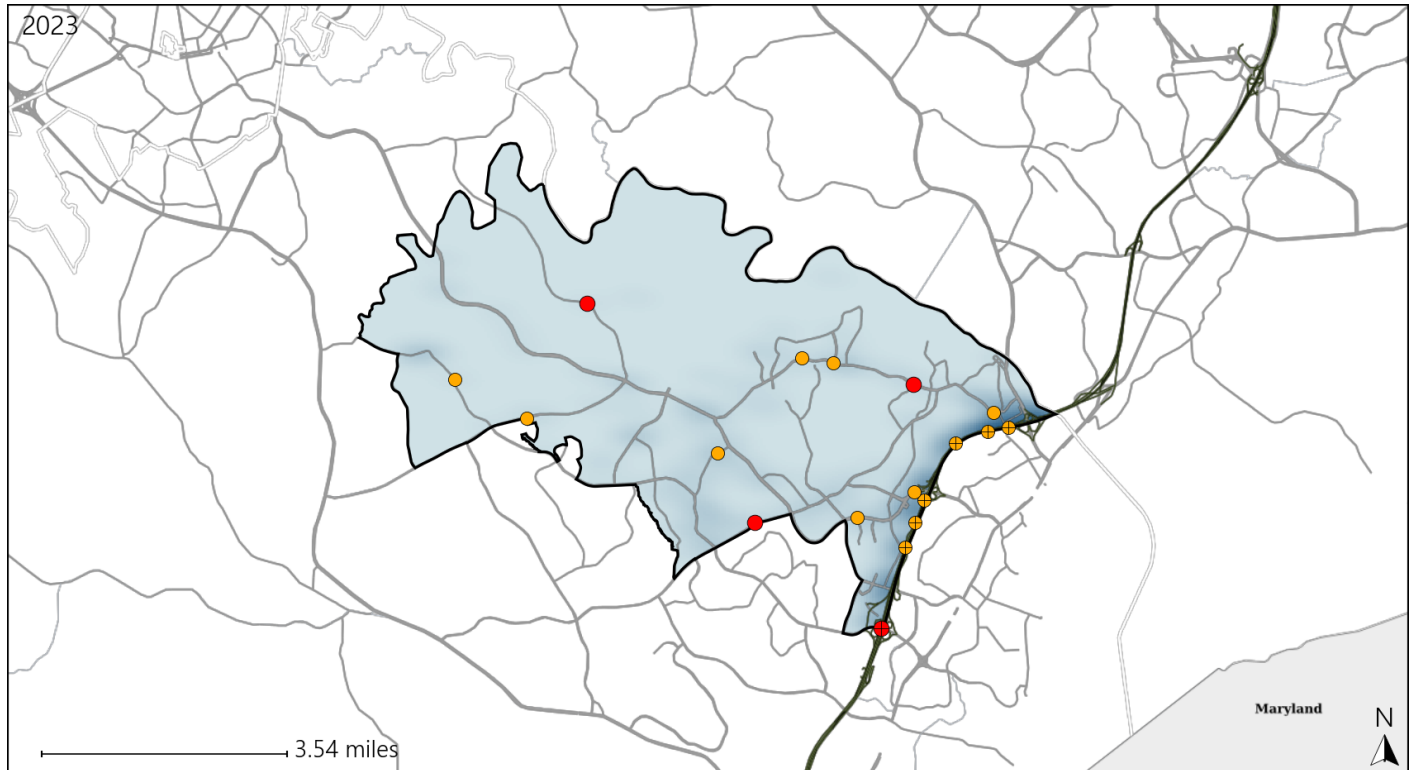


Available Crash Data - Calendar Year (CY)	CY 2020	CY 2021	CY 2022	CY 2023
Total Crashes	1027	1299	1326	1490
Fatal Crashes	2	6	5	8
Injury Crashes	259	377	417	476
Alcohol-Related Fatal Crashes	1	3	1	2
Percent of Alcohol-Related Fatal Crashes to Total Fatal Crashes	50%	50%	20%	25%
Alcohol-Related Injury Crashes	15	25	27	32
Percent of Alcohol-Related Injury Crashes to Total Injury Crashes	6%	7%	6%	7%

Virginia House District 25 Speed Crash Statistics

Report Generated May, 2024

	Count	Highest Time Period(s)	Highest Day(s)	Highest Month(s)
Fatal Crashes	4	6:00pm - 8:59pm	Saturday	November
Resulting Fatalities	4	(50%)	(50%)	(50%)
Serious Injury Crashes	14	6:00pm - 8:59pm	Sunday	November
		(43%)	(29%)	(21%)



House District 25 Speed-Related Crashes

Interstate Crashes Non-interstate Crashes
 ● Fatal ● Fatal
 ⊕ Serious Injury ⊕ Serious Injury

The blue gradient represents the density of all speed-related crashes.

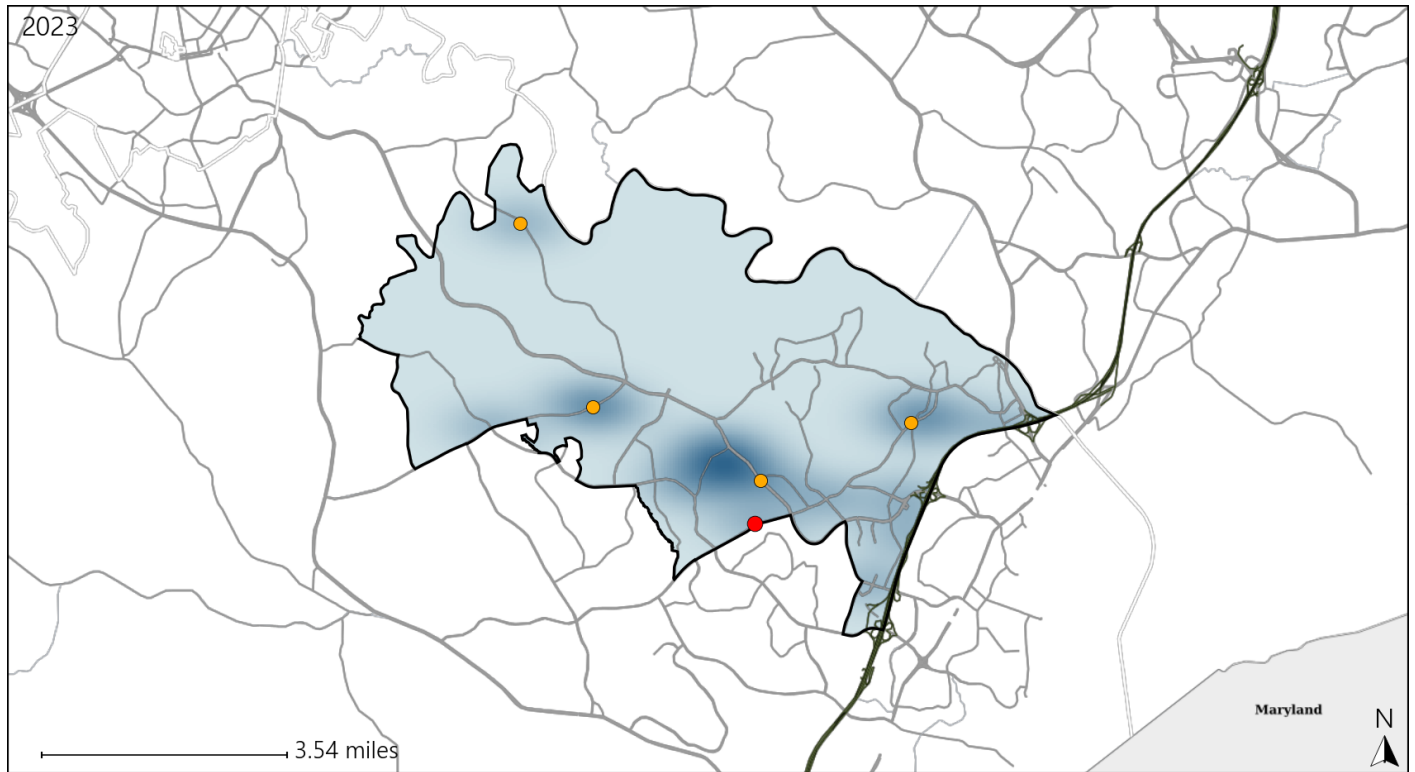


Available Crash Data - Calendar Year (CY)	CY 2020	CY 2021	CY 2022	CY 2023
Total Crashes	1027	1299	1326	1490
Fatal Crashes	2	6	5	8
Injury Crashes	259	377	417	476
Speed-Related Fatal Crashes	1	2	2	4
Percent of Speed-Related Fatal Crashes to Total Fatal Crashes	50%	33%	40%	50%
Speed-Related Injury Crashes	70	89	71	89
Percent of Speed-Related Injury Crashes to Total Injury Crashes	27%	24%	17%	19%

Virginia House District 25 Unrestrained Crash Statistics

Report Generated May, 2024

	Count	Highest Time Period(s)	Highest Day(s)	Highest Month(s)
Fatal Crashes	1	6:00pm - 8:59pm	Wednesday	August
Unrestrained Fatalities	1	(100%)	(100%)	(100%)
Serious Injury Crashes	4	3:00pm - 5:59pm 6:00pm - 8:59pm	Friday	February • July
		(50%)	(50%)	(50%)



House District 25 Unrestrained-Related Crashes

- | | |
|--------------------|------------------------|
| Interstate Crashes | Non-interstate Crashes |
| ● Fatal | ● Fatal |
| ⊕ Serious Injury | ⊕ Serious Injury |

The blue gradient represents the density of all unrestrained-related crashes.

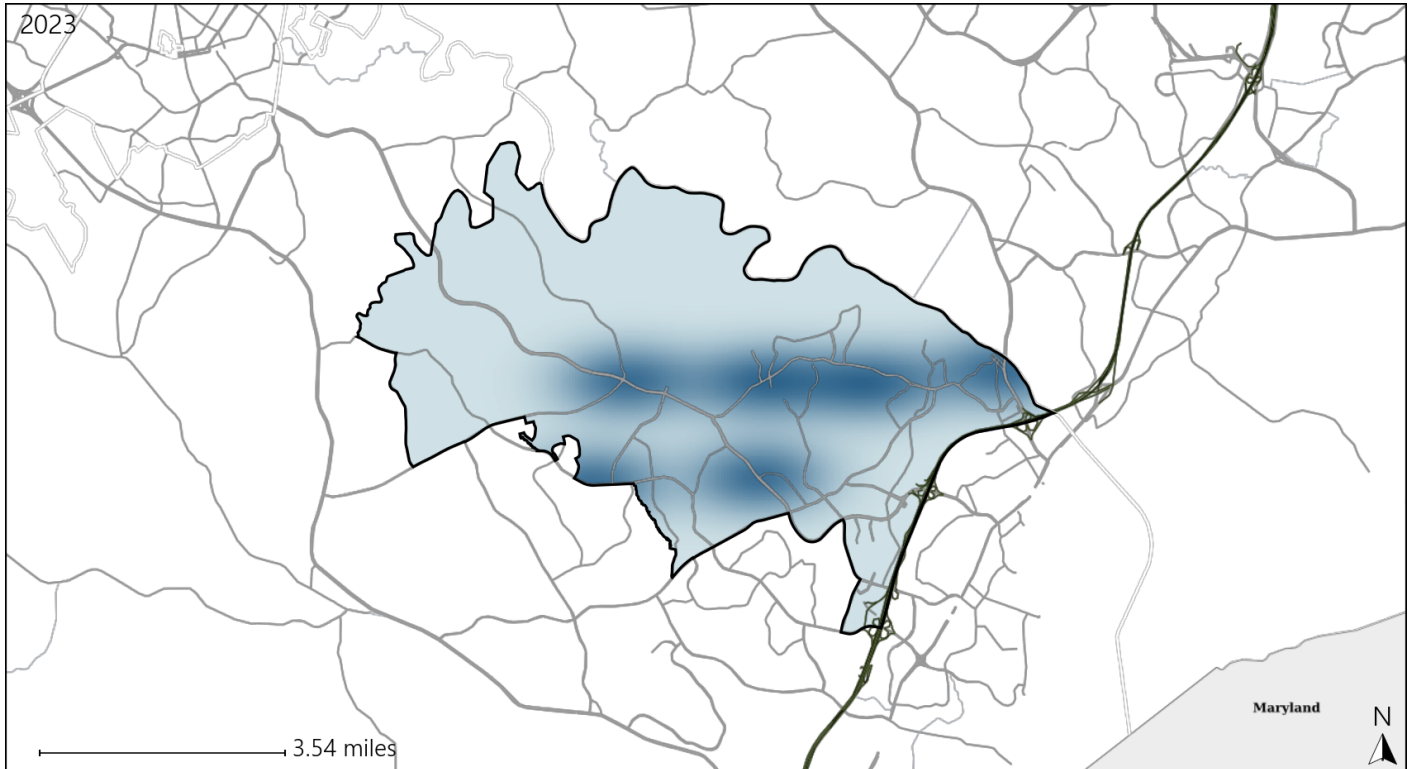


Available Crash Data - Calendar Year (CY)	CY 2020	CY 2021	CY 2022	CY 2023
Total Crashes	1027	1299	1326	1490
Fatalities	2	7	5	8
Injuries	393	620	729	859
Unrestrained Fatalities	2	3	2	1
Percent of Unrestrained Fatalities to Total Fatalities	100%	43%	40%	13%
Unrestrained Injuries	16	24	24	25
Percent of Unrestrained Injuries to Total Injuries	4%	4%	3%	3%

Virginia House District 25 Bicycle Crash Statistics

Report Generated May, 2024

	Count	Highest Time Period(s)	Highest Day(s)	Highest Month(s)
Fatal Crashes	0	-	-	-
Bicycle Fatalities	0	-	-	-
Serious Injury Crashes	0	-	-	-



House District 25 Bicycle-Related Crashes

Interstate Crashes

Non-interstate Crashes

● Fatal

● Fatal

⊕ Serious Injury

● Serious Injury

The blue gradient represents the density of all bicycle-related crashes.

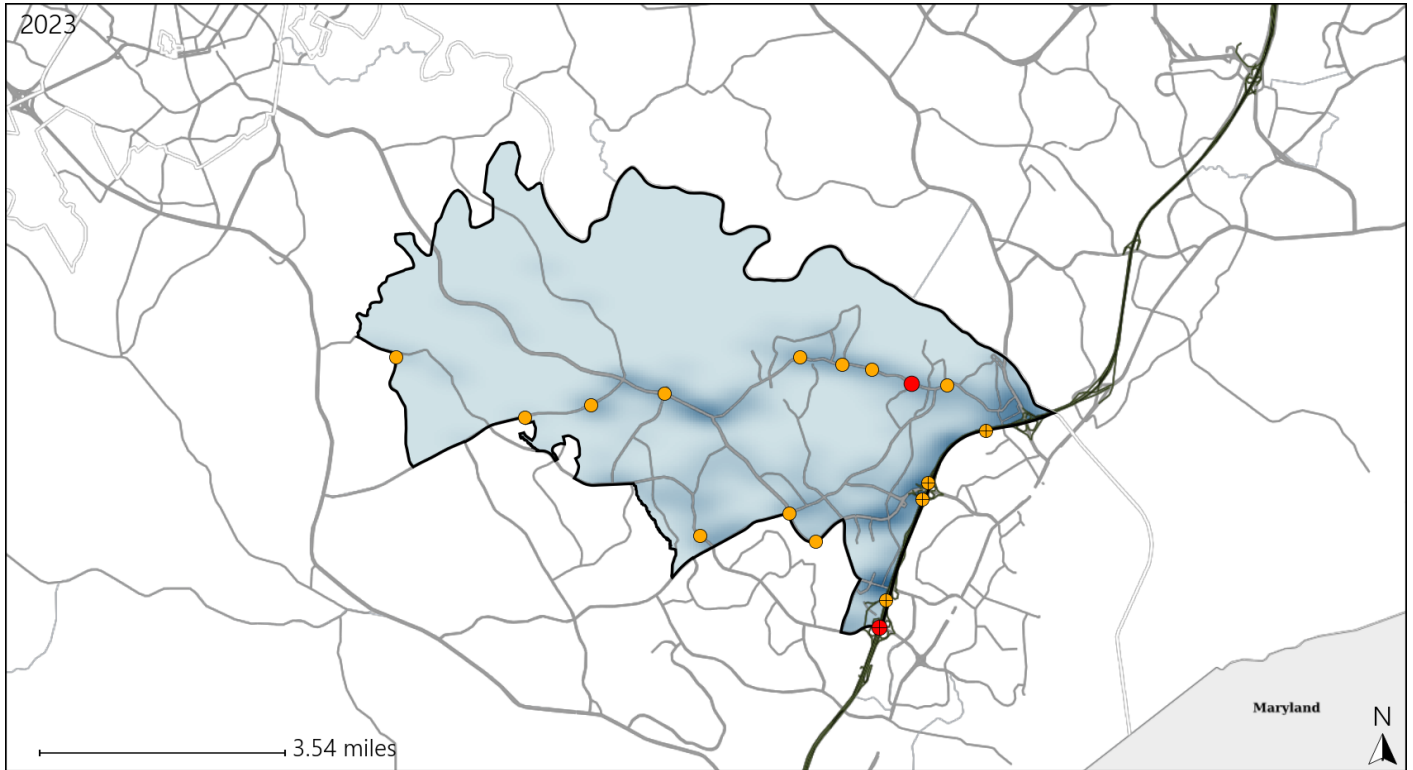


Available Crash Data - Calendar Year (CY)	CY 2020	CY 2021	CY 2022	CY 2023
Total Crashes	1027	1299	1326	1490
Fatal Crashes	2	6	5	8
Injury Crashes	259	377	417	476
Bicycle-Related Fatal Crashes	0	0	0	0
Percent of Bicycle-Related Fatal Crashes to Total Fatal Crashes	0%	0%	0%	0%
Bicycle-Related Injury Crashes	2	13	1	6
Percent of Bicycle-Related Injury Crashes to Total Injury Crashes	1%	3%	0%	1%

Virginia House District 25 Distracted Driving Crash Statistics

Report Generated May, 2024

	Count	Highest Time Period(s)	Highest Day(s)	Highest Month(s)
Fatal Crashes	2	3:00am - 5:59am	Saturday • Sunday	April • November
Resulting Fatalities	2	9:00pm - 11:59pm (100%)	(100%)	(100%)
Serious Injury Crashes	15	3:00pm - 5:59pm (47%)	Monday • Wednesday (54%)	July • June (40%)



House District 25 Distracted Driving-Related Crashes

- | | |
|--|--|
| Interstate Crashes | Non-interstate Crashes |
| ● Fatal | ● Fatal |
| ● Serious Injury | ● Serious Injury |

The blue gradient represents the density of all distracted driving-related crashes.



Available Crash Data - Calendar Year (CY)	CY 2020	CY 2021	CY 2022	CY 2023
Total Crashes	1027	1299	1326	1490
Fatal Crashes	2	6	5	8
Injury Crashes	259	377	417	476
Distracted Driving-Related Fatal Crashes	1	0	1	2
Percent of Distracted Driving-Related Fatal Crashes to Total Fatal Crashes	50%	0%	20%	25%
Distracted Driving-Related Injury Crashes	46	93	84	107
Percent of Distracted Driving-Related Injury Crashes to Total Injury Crashes	18%	25%	20%	22%