

# Virginia House District 4 Crash Statistics

Report Generated May, 2024

	Count	Highest Time Period(s)	Highest Day(s)	Highest Month(s)
<b>Fatal Crashes</b>	<b>2</b>	<b>6:00am - 8:59am</b>	<b>Friday</b>	<b>April + March</b>
<b>Resulting Fatalities</b>	<b>2</b>	<b>Midnight - 2:59am</b> (100%)	<b>Friday</b> (100%)	<b>April + March</b> (100%)
<b>Serious Injury Crashes</b>	<b>25</b>	<b>Midnight - 2:59am</b> (24%)	<b>Thursday</b> (28%)	<b>April</b> (16%)



### House District 4 Crashes

Interstate Crashes

- Fatal
- Serious Injury

Non-interstate Crashes

- Fatal
- Serious Injury

The blue gradient represents the density of all crashes.

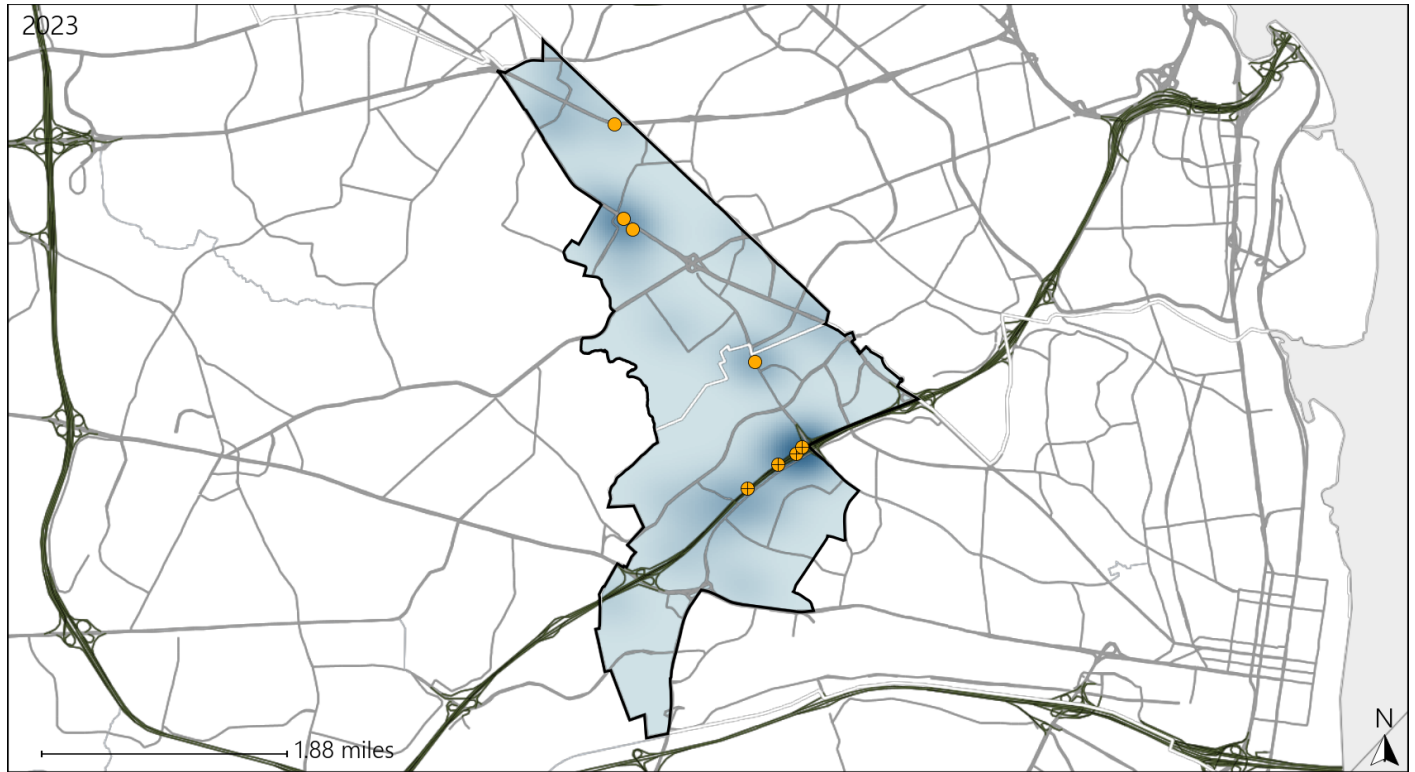


Available Crash Data - Calendar Year (CY)	CY 2020	CY 2021	CY 2022	CY 2023
<b>Total Crashes</b>	<b>552</b>	<b>582</b>	<b>621</b>	<b>598</b>
<b>Fatal Crashes</b>	<b>2</b>	<b>4</b>	<b>5</b>	<b>2</b>
<b>Injury Crashes</b>	<b>168</b>	<b>175</b>	<b>177</b>	<b>170</b>

# Virginia House District 4 Alcohol Crash Statistics

Report Generated May, 2024

	Count	Highest Time Period(s)	Highest Day(s)	Highest Month(s)
<b>Fatal Crashes</b>	0	-	-	-
<b>Resulting Fatalities</b>	0	-	-	-
<b>Serious Injury Crashes</b>	8	Midnight - 2:59am (50%)	Saturday - Thursday (76%)	November - September (50%)



### House District 4 Alcohol-Related Crashes

Interstate Crashes                      Non-interstate Crashes  
 ● Fatal                                      ● Fatal  
 ⊕ Serious Injury                          ⊕ Serious Injury

The blue gradient represents the density of all alcohol-related crashes.



Available Crash Data - Calendar Year (CY)	CY 2020	CY 2021	CY 2022	CY 2023
<b>Total Crashes</b>	552	582	621	598
<b>Fatal Crashes</b>	2	4	5	2
<b>Injury Crashes</b>	168	175	177	170
<b>Alcohol-Related Fatal Crashes</b>	1	1	1	0
<b>Percent of Alcohol-Related Fatal Crashes to Total Fatal Crashes</b>	50%	25%	20%	0%
<b>Alcohol-Related Injury Crashes</b>	17	11	20	17
<b>Percent of Alcohol-Related Injury Crashes to Total Injury Crashes</b>	10%	6%	11%	10%

# Virginia House District 4 Speed Crash Statistics

Report Generated May, 2024

	Count	Highest Time Period(s)	Highest Day(s)	Highest Month(s)
<b>Fatal Crashes</b>	<b>1</b>	<b>Midnight - 2:59am</b>	<b>Friday</b>	<b>April</b>
<b>Resulting Fatalities</b>	<b>1</b>	(100%)	(100%)	(100%)
<b>Serious Injury Crashes</b>	<b>9</b>	<b>Midnight - 2:59am</b>	<b>Friday • Saturday</b>	<b>November</b>
		(56%)	(44%)	(22%)



### House District 4 Speed-Related Crashes

Interstate Crashes                      Non-interstate Crashes  
 ● Fatal                                      ● Fatal  
 ⊕ Serious Injury                          ⊕ Serious Injury

The blue gradient represents the density of all speed-related crashes.

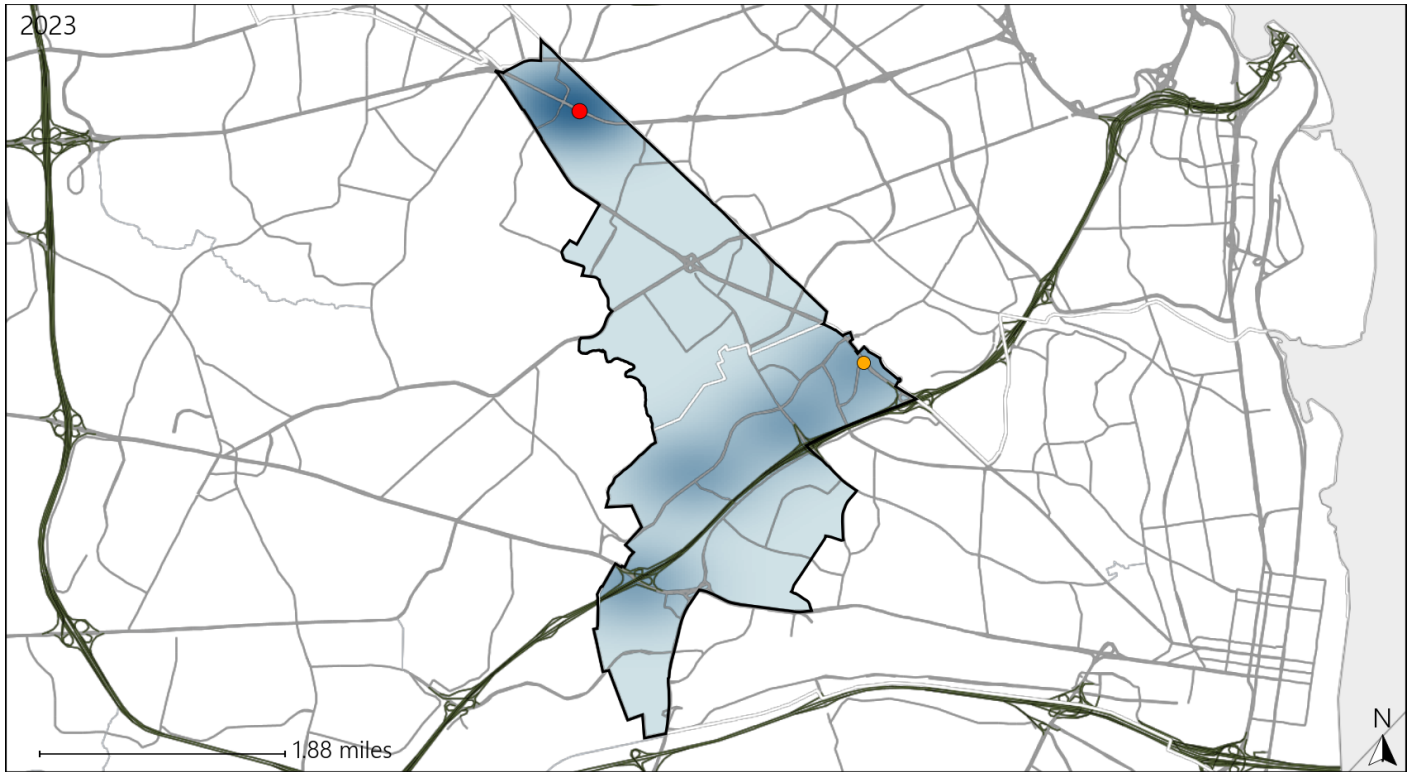


Available Crash Data - Calendar Year (CY)	CY 2020	CY 2021	CY 2022	CY 2023
<b>Total Crashes</b>	<b>552</b>	<b>582</b>	<b>621</b>	<b>598</b>
<b>Fatal Crashes</b>	<b>2</b>	<b>4</b>	<b>5</b>	<b>2</b>
<b>Injury Crashes</b>	<b>168</b>	<b>175</b>	<b>177</b>	<b>170</b>
<b>Speed-Related Fatal Crashes</b>	<b>2</b>	<b>1</b>	<b>1</b>	<b>1</b>
<b>Percent of Speed-Related Fatal Crashes to Total Fatal Crashes</b>	<b>100%</b>	<b>25%</b>	<b>20%</b>	<b>50%</b>
<b>Speed-Related Injury Crashes</b>	<b>41</b>	<b>55</b>	<b>55</b>	<b>46</b>
<b>Percent of Speed-Related Injury Crashes to Total Injury Crashes</b>	<b>24%</b>	<b>31%</b>	<b>31%</b>	<b>27%</b>

# Virginia House District 4 Unrestrained Crash Statistics

Report Generated May, 2024

	Count	Highest Time Period(s)	Highest Day(s)	Highest Month(s)
<b>Fatal Crashes</b>	<b>1</b>	<b>Midnight - 2:59am</b>	<b>Friday</b>	<b>April</b>
<b>Unrestrained Fatalities</b>	<b>1</b>	<b>(100%)</b>	<b>(100%)</b>	<b>(100%)</b>
<b>Serious Injury Crashes</b>	<b>1</b>	<b>9:00pm - 11:59pm</b>	<b>Monday</b>	<b>March</b>
		<b>(100%)</b>	<b>(100%)</b>	<b>(100%)</b>



### House District 4 Unrestrained-Related Crashes

Interstate Crashes

- Fatal
- Serious Injury

Non-interstate Crashes

- Fatal
- Serious Injury

The blue gradient represents the density of all unrestrained-related crashes.

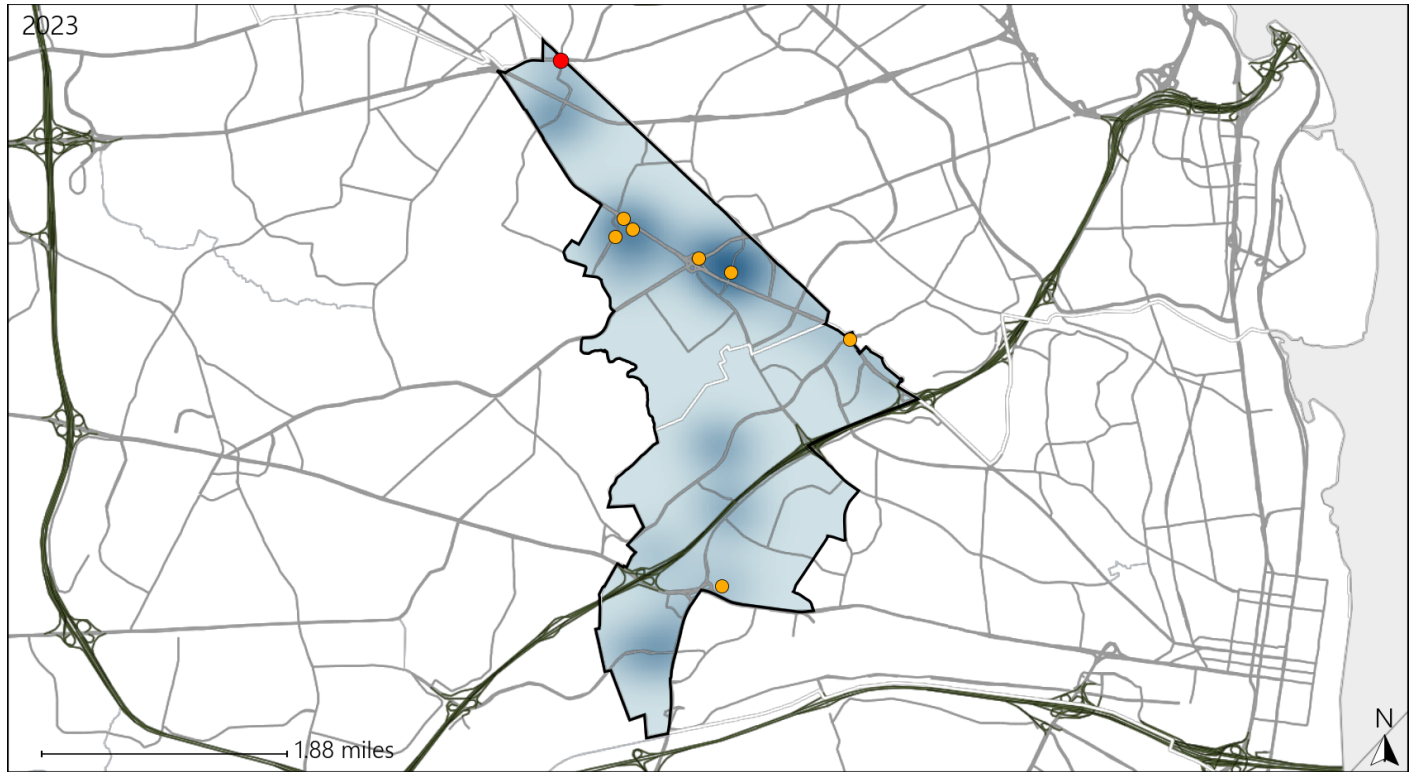


Available Crash Data - Calendar Year (CY)	CY 2020	CY 2021	CY 2022	CY 2023
<b>Total Crashes</b>	<b>552</b>	<b>582</b>	<b>621</b>	<b>598</b>
<b>Fatalities</b>	<b>3</b>	<b>4</b>	<b>5</b>	<b>2</b>
<b>Injuries</b>	<b>246</b>	<b>262</b>	<b>270</b>	<b>271</b>
<b>Unrestrained Fatalities</b>	<b>0</b>	<b>0</b>	<b>0</b>	<b>1</b>
<b>Percent of Unrestrained Fatalities to Total Fatalities</b>	<b>0%</b>	<b>0%</b>	<b>0%</b>	<b>50%</b>
<b>Unrestrained Injuries</b>	<b>7</b>	<b>6</b>	<b>15</b>	<b>5</b>
<b>Percent of Unrestrained Injuries to Total Injuries</b>	<b>3%</b>	<b>2%</b>	<b>6%</b>	<b>2%</b>

# Virginia House District 4 Pedestrian Crash Statistics

Report Generated May, 2024

	Count	Highest Time Period(s)	Highest Day(s)	Highest Month(s)
<b>Fatal Crashes</b>	<b>1</b>	<b>6:00am - 8:59am</b>	<b>Friday</b>	<b>March</b>
<b>Pedestrian Fatalities</b>	<b>1</b>	<b>(100%)</b>	<b>(100%)</b>	<b>(100%)</b>
<b>Serious Injury Crashes</b>	<b>7</b>	<b>6:00pm - 8:59pm</b>	<b>Monday • Thursday</b>	<b>April • August</b>
		<b>(43%)</b>	<b>(86%)</b>	<b>(28%)</b>



### House District 4 Pedestrian-Related Crashes

- |                    |                        |
|--------------------|------------------------|
| Interstate Crashes | Non-interstate Crashes |
| Fatal              | Fatal                  |
| Serious Injury     | Serious Injury         |

The blue gradient represents the density of all pedestrian-related crashes.



Available Crash Data - Calendar Year (CY)	CY 2020	CY 2021	CY 2022	CY 2023
Total Crashes	552	582	621	598
Fatal Crashes	2	4	5	2
Injury Crashes	168	175	177	170
Pedestrian-Related Fatal Crashes	0	2	4	1
Percent of Pedestrian-Related Fatal Crashes to Total Fatal Crashes	0%	50%	80%	50%
Pedestrian-Related Injury Crashes	22	16	24	28
Percent of Pedestrian-Related Injury Crashes to Total Injury Crashes	13%	9%	14%	16%

# Virginia House District 4 Distracted Driving Crash Statistics

Report Generated May, 2024

	Count	Highest Time Period(s)	Highest Day(s)	Highest Month(s)
<b>Fatal Crashes</b>	0	-	-	-
<b>Resulting Fatalities</b>	0	-	-	-
<b>Serious Injury Crashes</b>	4	Midnight - 2:59am (50%)	Saturday (50%)	December • January (50%)



## House District 4 Distracted Driving-Related Crashes

- |                    |                        |
|--------------------|------------------------|
| Interstate Crashes | Non-interstate Crashes |
| ● Fatal            | ● Fatal                |
| ⊕ Serious Injury   | ● Serious Injury       |

The blue gradient represents the density of all distracted driving-related crashes.



Available Crash Data - Calendar Year (CY)	CY 2020	CY 2021	CY 2022	CY 2023
Total Crashes	552	582	621	598
Fatal Crashes	2	4	5	2
Injury Crashes	168	175	177	170
Distracted Driving-Related Fatal Crashes	0	0	0	0
Percent of Distracted Driving-Related Fatal Crashes to Total Fatal Crashes	0%	0%	0%	0%
Distracted Driving-Related Injury Crashes	24	49	30	33
Percent of Distracted Driving-Related Injury Crashes to Total Injury Crashes	14%	28%	17%	19%