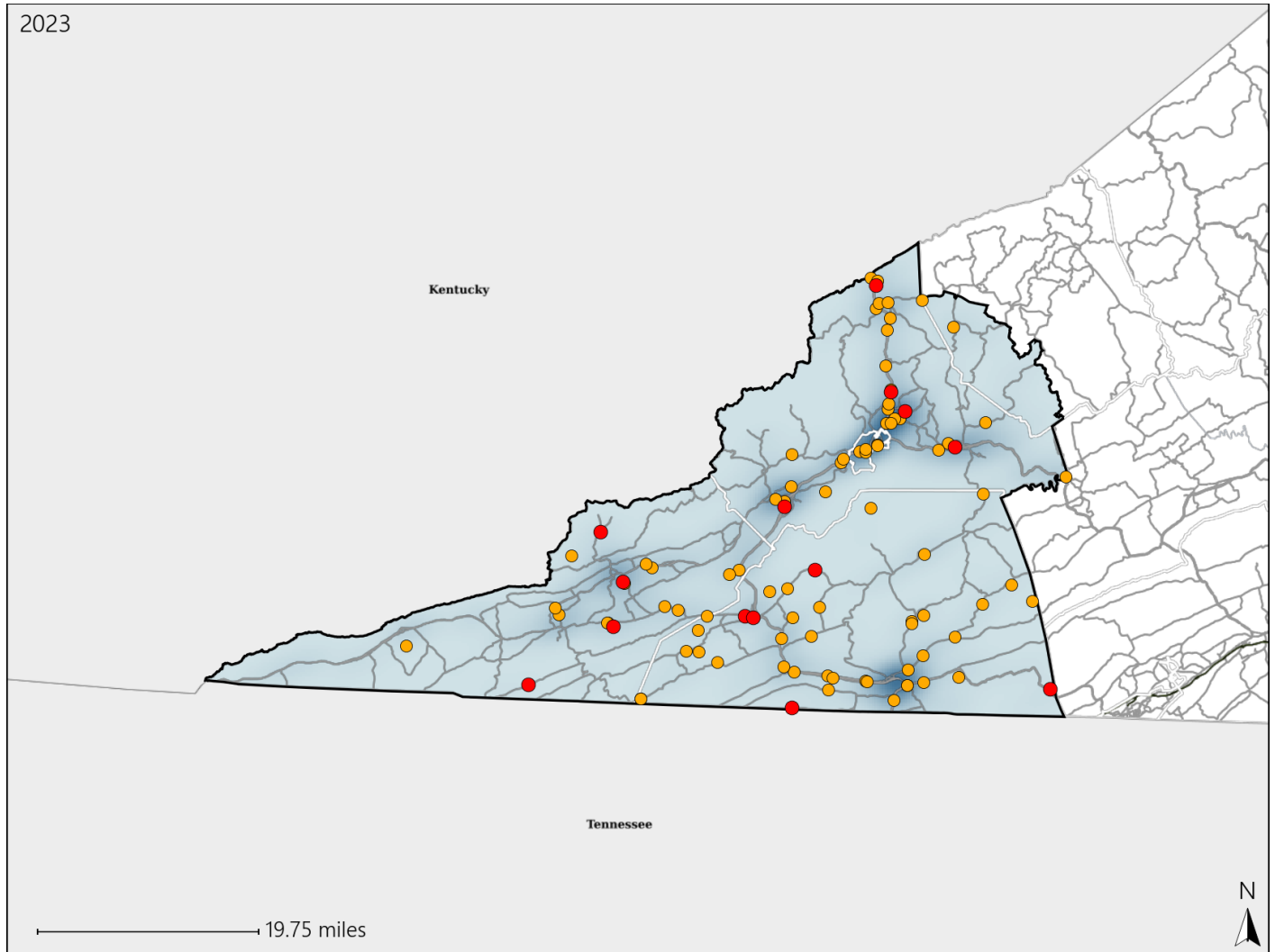


# Virginia House District 45 Crash Statistics

Report Generated May, 2024

	Count	Highest Time Period(s)	Highest Day(s)	Highest Month(s)
<b>Fatal Crashes</b>	<b>14</b>	<b>3:00pm - 5:59pm</b>	<b>Sunday • Tuesday</b>	<b>August • June</b>
<b>Resulting Fatalities</b>	<b>15</b>	(29%)	(42%)	(42%)
<b>Serious Injury Crashes</b>	<b>83</b>	<b>3:00pm - 5:59pm</b>	<b>Monday</b>	<b>April • July</b>
		(22%)	(20%)	(20%)



## House District 45 Crashes

Interstate Crashes

- Fatal
- Serious Injury

Non-interstate Crashes

- Fatal
- Serious Injury

The blue gradient represents the density of all crashes.

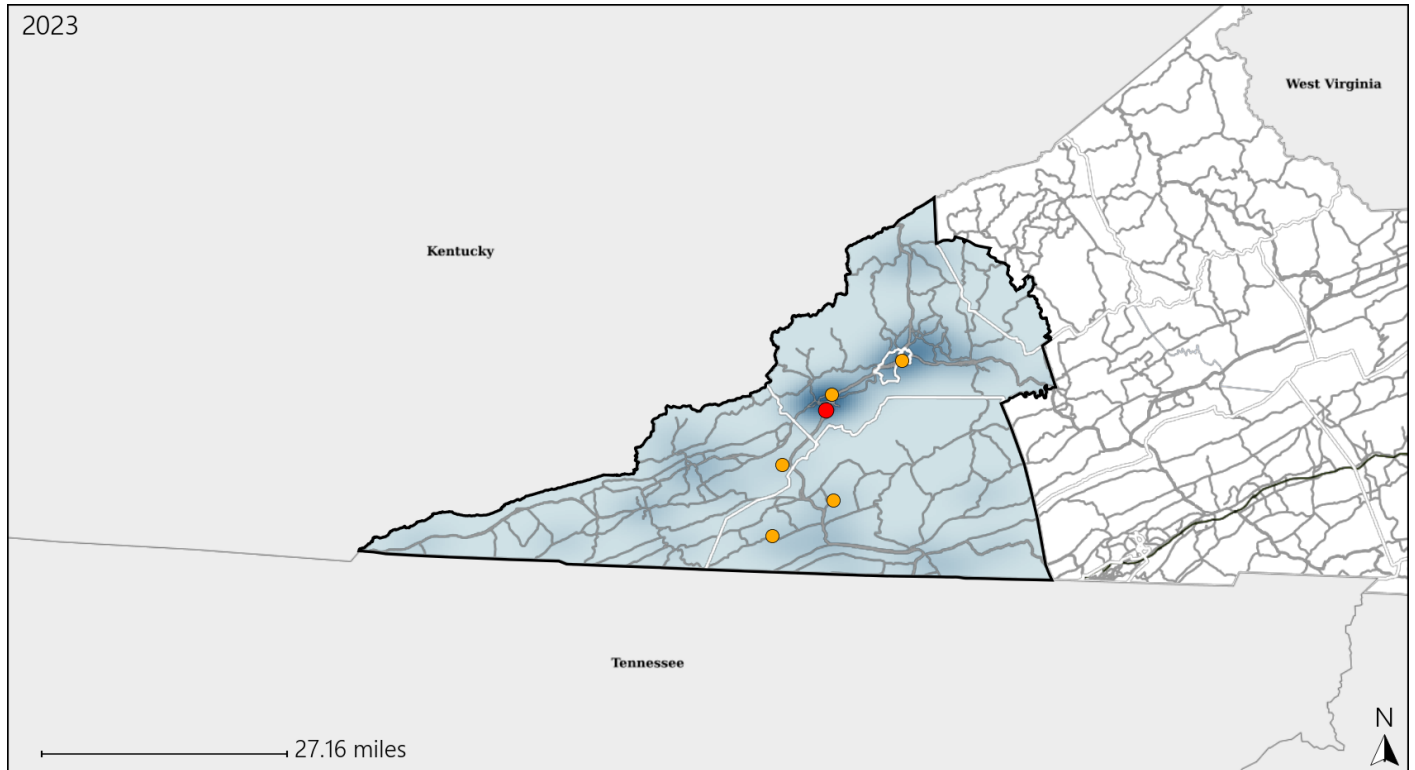


Available Crash Data - Calendar Year (CY)	CY 2020	CY 2021	CY 2022	CY 2023
<b>Total Crashes</b>	<b>1088</b>	<b>1141</b>	<b>1058</b>	<b>1154</b>
<b>Fatal Crashes</b>	<b>13</b>	<b>7</b>	<b>12</b>	<b>14</b>
<b>Injury Crashes</b>	<b>305</b>	<b>317</b>	<b>317</b>	<b>339</b>

# Virginia House District 45 Alcohol Crash Statistics

Report Generated May, 2024

	Count	Highest Time Period(s)	Highest Day(s)	Highest Month(s)
<b>Fatal Crashes</b>	<b>1</b>	<b>Noon - 2:59pm</b>	<b>Tuesday</b>	<b>August</b>
<b>Resulting Fatalities</b>	<b>1</b>	<b>(100%)</b>	<b>(100%)</b>	<b>(100%)</b>
<b>Serious Injury Crashes</b>	<b>5</b>	<b>9:00pm - 11:59pm</b>	<b>Monday - Saturday</b>	<b>February - July</b>
		<b>(40%)</b>	<b>(80%)</b>	<b>(40%)</b>



## House District 45 Alcohol-Related Crashes

Interstate Crashes                      Non-interstate Crashes  
 ● Fatal                                      ● Fatal  
 ● Serious Injury                          ● Serious Injury

The blue gradient represents the density of all alcohol-related crashes.

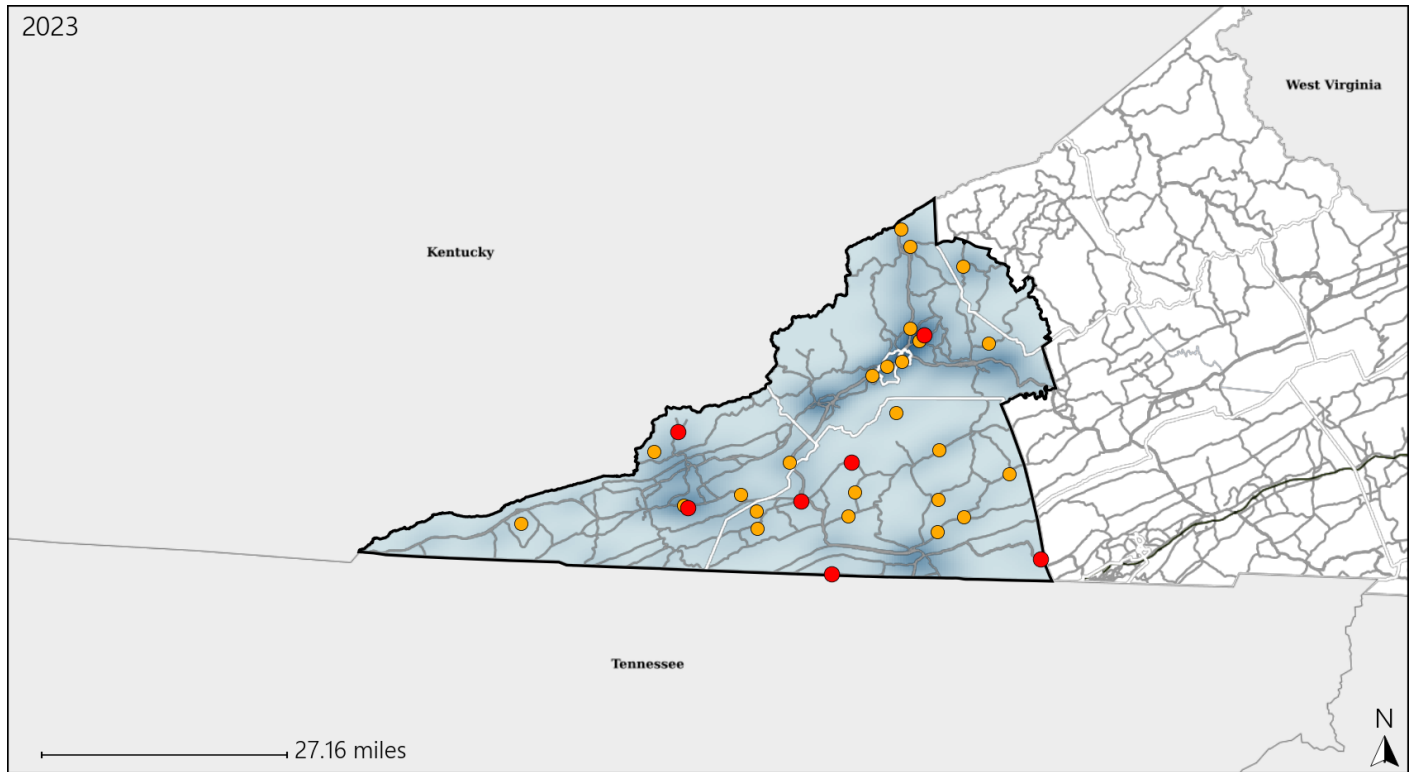


Available Crash Data - Calendar Year (CY)	CY 2020	CY 2021	CY 2022	CY 2023
Total Crashes	1088	1141	1058	1154
Fatal Crashes	13	7	12	14
Injury Crashes	305	317	317	339
Alcohol-Related Fatal Crashes	3	0	0	1
Percent of Alcohol-Related Fatal Crashes to Total Fatal Crashes	23%	0%	0%	7%
Alcohol-Related Injury Crashes	20	23	24	13
Percent of Alcohol-Related Injury Crashes to Total Injury Crashes	7%	7%	8%	4%

# Virginia House District 45 Speed Crash Statistics

Report Generated May, 2024

	Count	Highest Time Period(s)	Highest Day(s)	Highest Month(s)
<b>Fatal Crashes</b>	<b>7</b>	<b>3:00pm - 5:59pm</b>	<b>Sunday • Tuesday</b>	<b>June • September</b>
<b>Resulting Fatalities</b>	<b>8</b>	(57%)	(58%)	(58%)
<b>Serious Injury Crashes</b>	<b>24</b>	<b>3:00pm - 5:59pm 6:00pm - 8:59pm</b>	<b>Thursday</b>	<b>August • March</b>
		(50%)	(33%)	(34%)



## House District 45 Speed-Related Crashes

Interstate Crashes

Non-interstate Crashes

- Fatal
- ⊕ Serious Injury

- Fatal
- Serious Injury

The blue gradient represents the density of all speed-related crashes.

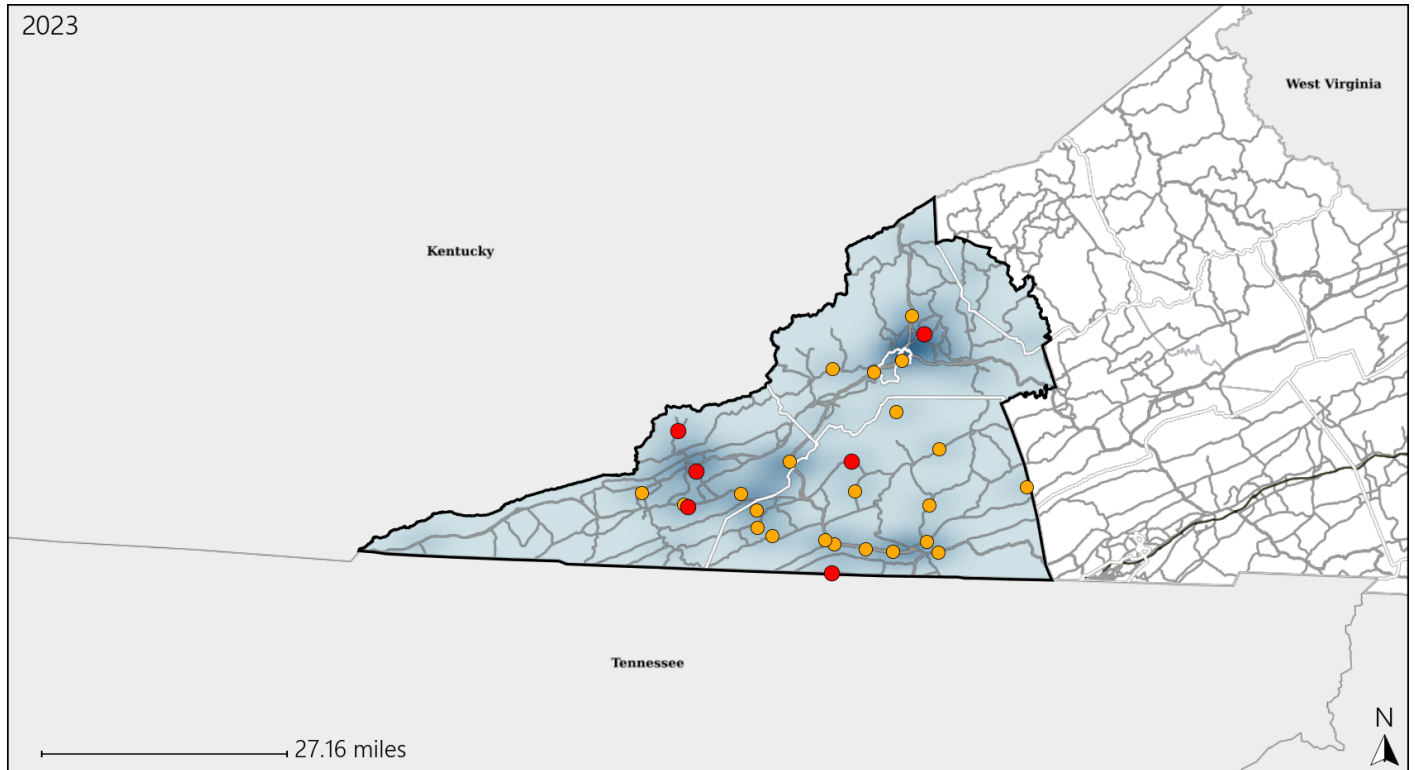


Available Crash Data - Calendar Year (CY)	CY 2020	CY 2021	CY 2022	CY 2023
Total Crashes	1088	1141	1058	1154
Fatal Crashes	13	7	12	14
Injury Crashes	305	317	317	339
Speed-Related Fatal Crashes	2	3	5	7
Percent of Speed-Related Fatal Crashes to Total Fatal Crashes	15%	43%	42%	50%
Speed-Related Injury Crashes	79	90	80	76
Percent of Speed-Related Injury Crashes to Total Injury Crashes	26%	28%	25%	22%

# Virginia House District 45 Unrestrained Crash Statistics

Report Generated May, 2024

	Count	Highest Time Period(s)	Highest Day(s)	Highest Month(s)
<b>Fatal Crashes</b>	<b>6</b>	<b>3:00pm - 5:59pm</b>	<b>Thursday • Tuesday</b>	<b>June • May</b>
<b>Unrestrained Fatalities</b>	<b>6</b>	(50%)	(66%)	(66%)
<b>Serious Injury Crashes</b>	<b>22</b>	<b>3:00pm - 5:59pm</b>	<b>Monday</b>	<b>August</b>
		(27%)	(36%)	(23%)



## House District 45 Unrestrained-Related Crashes

Interstate Crashes

Non-interstate Crashes

- Fatal
- Serious Injury

- Fatal
- Serious Injury

The blue gradient represents the density of all unrestrained-related crashes.

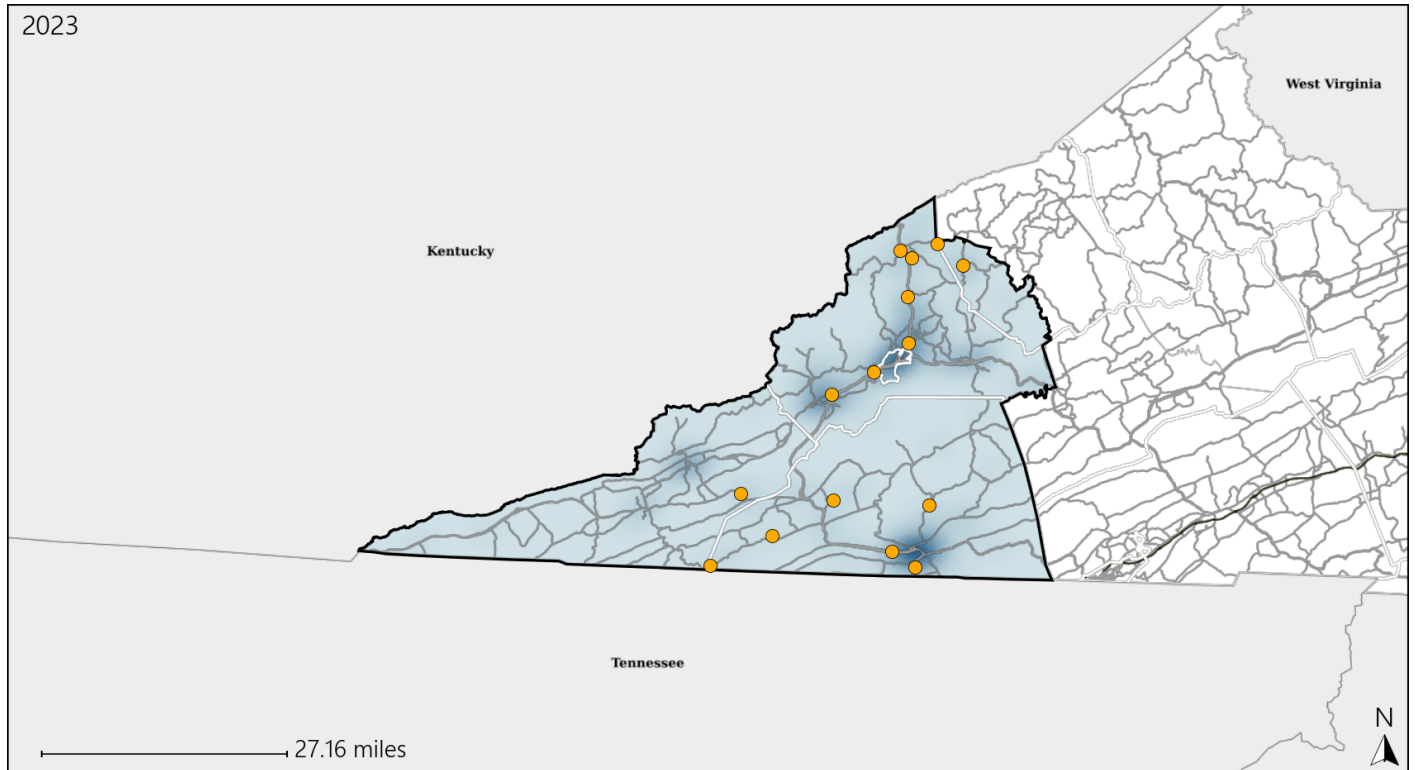


Available Crash Data - Calendar Year (CY)	CY 2020	CY 2021	CY 2022	CY 2023
<b>Total Crashes</b>	<b>1088</b>	<b>1141</b>	<b>1058</b>	<b>1154</b>
<b>Fatalities</b>	<b>14</b>	<b>7</b>	<b>12</b>	<b>15</b>
<b>Injuries</b>	<b>477</b>	<b>453</b>	<b>477</b>	<b>499</b>
<b>Unrestrained Fatalities</b>	<b>5</b>	<b>3</b>	<b>4</b>	<b>6</b>
<b>Percent of Unrestrained Fatalities to Total Fatalities</b>	<b>36%</b>	<b>43%</b>	<b>33%</b>	<b>40%</b>
<b>Unrestrained Injuries</b>	<b>77</b>	<b>48</b>	<b>58</b>	<b>62</b>
<b>Percent of Unrestrained Injuries to Total Injuries</b>	<b>16%</b>	<b>11%</b>	<b>12%</b>	<b>12%</b>

# Virginia House District 45 Distracted Driving Crash Statistics

Report Generated May, 2024

	Count	Highest Time Period(s)	Highest Day(s)	Highest Month(s)
<b>Fatal Crashes</b>	<b>0</b>	-	-	-
<b>Resulting Fatalities</b>	<b>0</b>	-	-	-
<b>Serious Injury Crashes</b>	<b>15</b>	<b>9:00am - 11:59am (27%)</b>	<b>Sunday (33%)</b>	<b>July • November (40%)</b>



## House District 45 Distracted Driving-Related Crashes

- |  |  |
|--|--|
| Interstate Crashes                                   | Non-interstate Crashes                               |
| <span style="color: red;">●</span> Fatal             | <span style="color: red;">●</span> Fatal             |
| <span style="color: orange;">●</span> Serious Injury | <span style="color: orange;">●</span> Serious Injury |

The blue gradient represents the density of all distracted driving-related crashes.



Available Crash Data - Calendar Year (CY)	CY 2020	CY 2021	CY 2022	CY 2023
Total Crashes	1088	1141	1058	1154
Fatal Crashes	13	7	12	14
Injury Crashes	305	317	317	339
Distracted Driving-Related Fatal Crashes	0	1	0	0
Percent of Distracted Driving-Related Fatal Crashes to Total Fatal Crashes	0%	14%	0%	0%
Distracted Driving-Related Injury Crashes	55	51	52	45
Percent of Distracted Driving-Related Injury Crashes to Total Injury Crashes	18%	16%	16%	13%