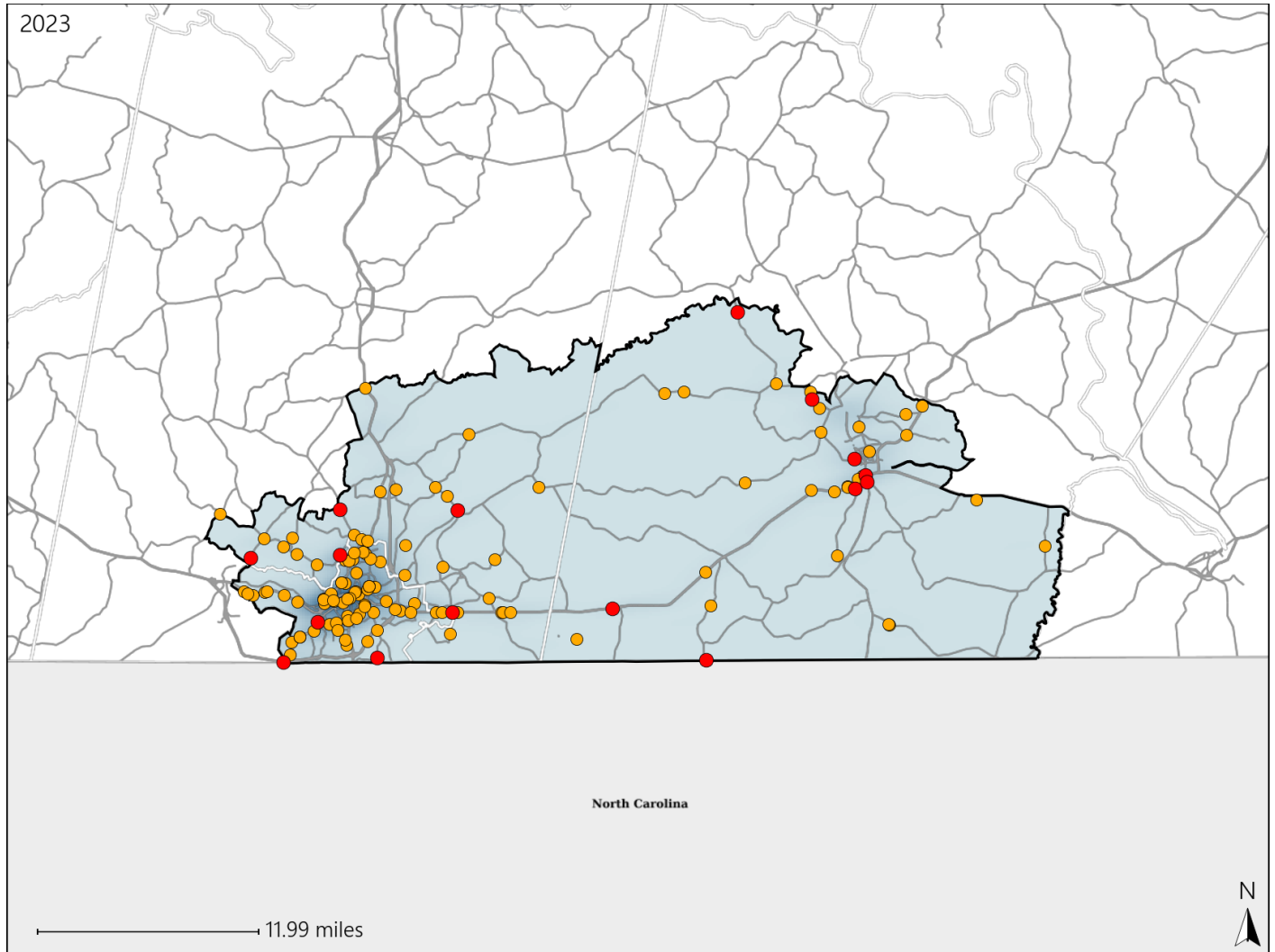


# Virginia House District 49 Crash Statistics

Report Generated May, 2024

	Count	Highest Time Period(s)	Highest Day(s)	Highest Month(s)
<b>Fatal Crashes</b>	<b>16</b>	<b>3:00pm - 5:59pm</b>	<b>Wednesday</b>	<b>July</b>
<b>Resulting Fatalities</b>	<b>18</b>	(25%)	(31%)	(19%)
<b>Serious Injury Crashes</b>	<b>119</b>	<b>Noon - 2:59pm</b>	<b>Wednesday</b>	<b>April • May</b>
		(22%)	(19%)	(24%)



## House District 49 Crashes

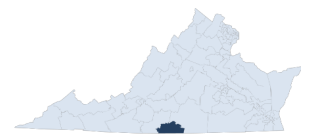
Interstate Crashes

- Fatal
- Serious Injury

Non-interstate Crashes

- Fatal
- Serious Injury

The blue gradient represents the density of all crashes.

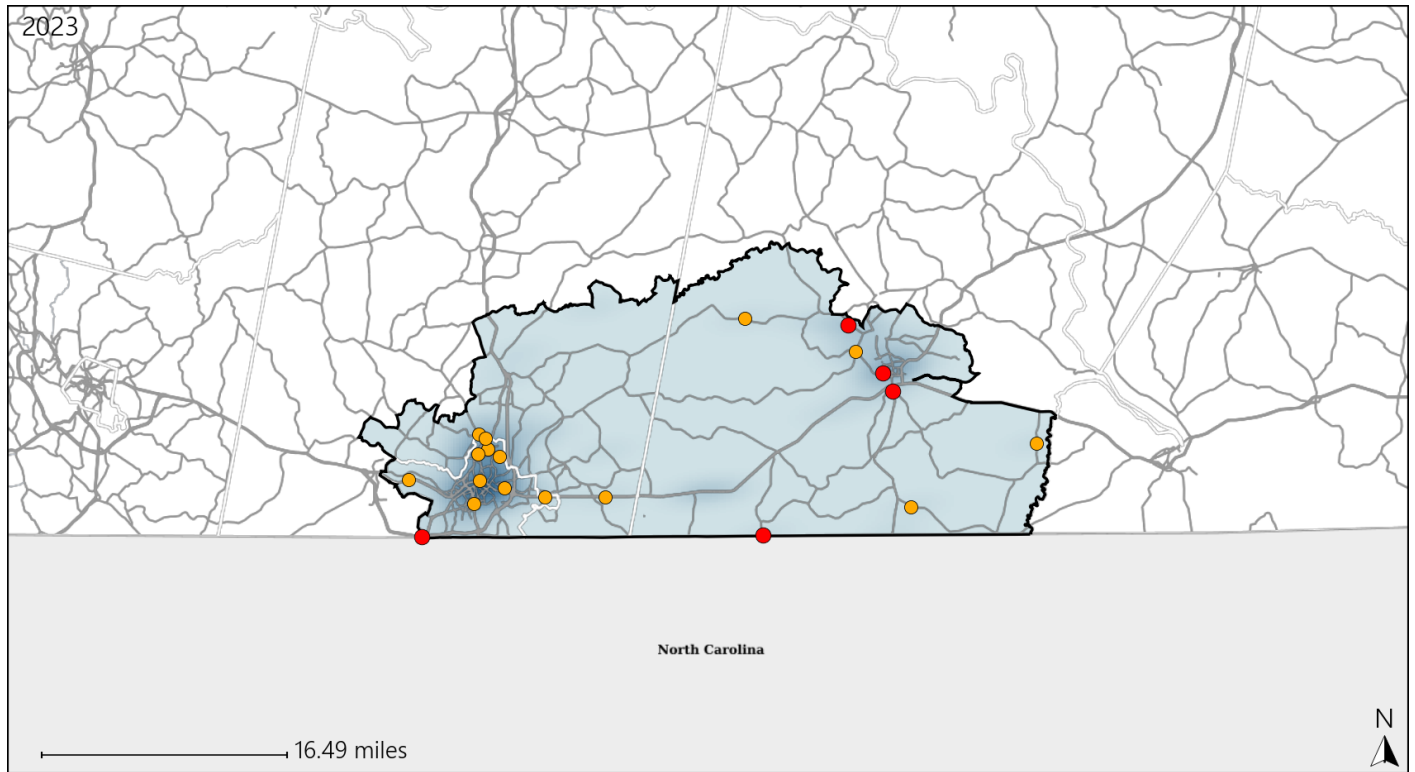


Available Crash Data - Calendar Year (CY)	CY 2020	CY 2021	CY 2022	CY 2023
<b>Total Crashes</b>	<b>1501</b>	<b>1652</b>	<b>1533</b>	<b>1711</b>
<b>Fatal Crashes</b>	<b>12</b>	<b>16</b>	<b>16</b>	<b>16</b>
<b>Injury Crashes</b>	<b>505</b>	<b>552</b>	<b>557</b>	<b>585</b>

# Virginia House District 49 Alcohol Crash Statistics

Report Generated May, 2024

	Count	Highest Time Period(s)	Highest Day(s)	Highest Month(s)
<b>Fatal Crashes</b>	<b>5</b>	<b>Midnight - 2:59am</b>	<b>Sunday • Wednesday</b>	<b>July</b>
<b>Resulting Fatalities</b>	<b>7</b>	<b>(40%)</b>	<b>(80%)</b>	<b>(40%)</b>
<b>Serious Injury Crashes</b>	<b>15</b>	<b>Midnight - 2:59am Noon - 2:59pm</b>	<b>Sunday</b>	<b>August • February</b>
		<b>(54%)</b>	<b>(27%)</b>	<b>(26%)</b>



## House District 49 Alcohol-Related Crashes

Interstate Crashes                      Non-interstate Crashes  
 ● Fatal                                      ● Fatal  
 ⊕ Serious Injury                          ● Serious Injury

The blue gradient represents the density of all alcohol-related crashes.

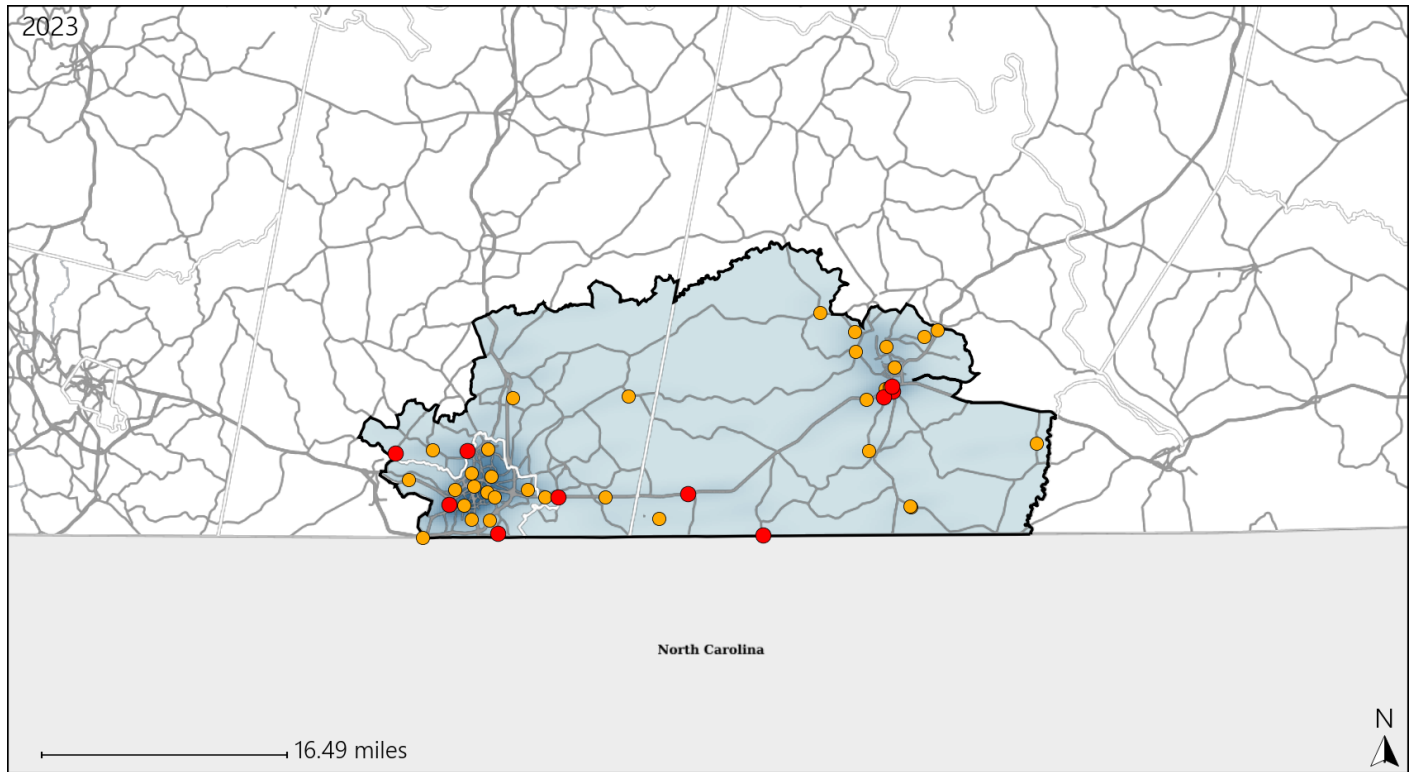


Available Crash Data - Calendar Year (CY)	CY 2020	CY 2021	CY 2022	CY 2023
Total Crashes	1501	1652	1533	1711
Fatal Crashes	12	16	16	16
Injury Crashes	505	552	557	585
Alcohol-Related Fatal Crashes	3	1	8	5
Percent of Alcohol-Related Fatal Crashes to Total Fatal Crashes	25%	6%	50%	31%
Alcohol-Related Injury Crashes	48	37	37	39
Percent of Alcohol-Related Injury Crashes to Total Injury Crashes	10%	7%	7%	7%

# Virginia House District 49 Speed Crash Statistics

Report Generated May, 2024

	Count	Highest Time Period(s)	Highest Day(s)	Highest Month(s)
<b>Fatal Crashes</b>	<b>10</b>	<b>6:00pm - 8:59pm</b>	<b>Thursday</b>	<b>December - July</b>
<b>Resulting Fatalities</b>	<b>12</b>	(30%)	(30%)	(40%)
<b>Serious Injury Crashes</b>	<b>33</b>	<b>3:00pm - 5:59pm</b> <b>6:00am - 8:59am</b>	<b>Thursday</b>	<b>April - February</b>
		(36%)	(24%)	(36%)



## House District 49 Speed-Related Crashes

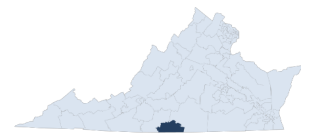
Interstate Crashes

- Fatal
- Serious Injury

Non-interstate Crashes

- Fatal
- Serious Injury

The blue gradient represents the density of all speed-related crashes.

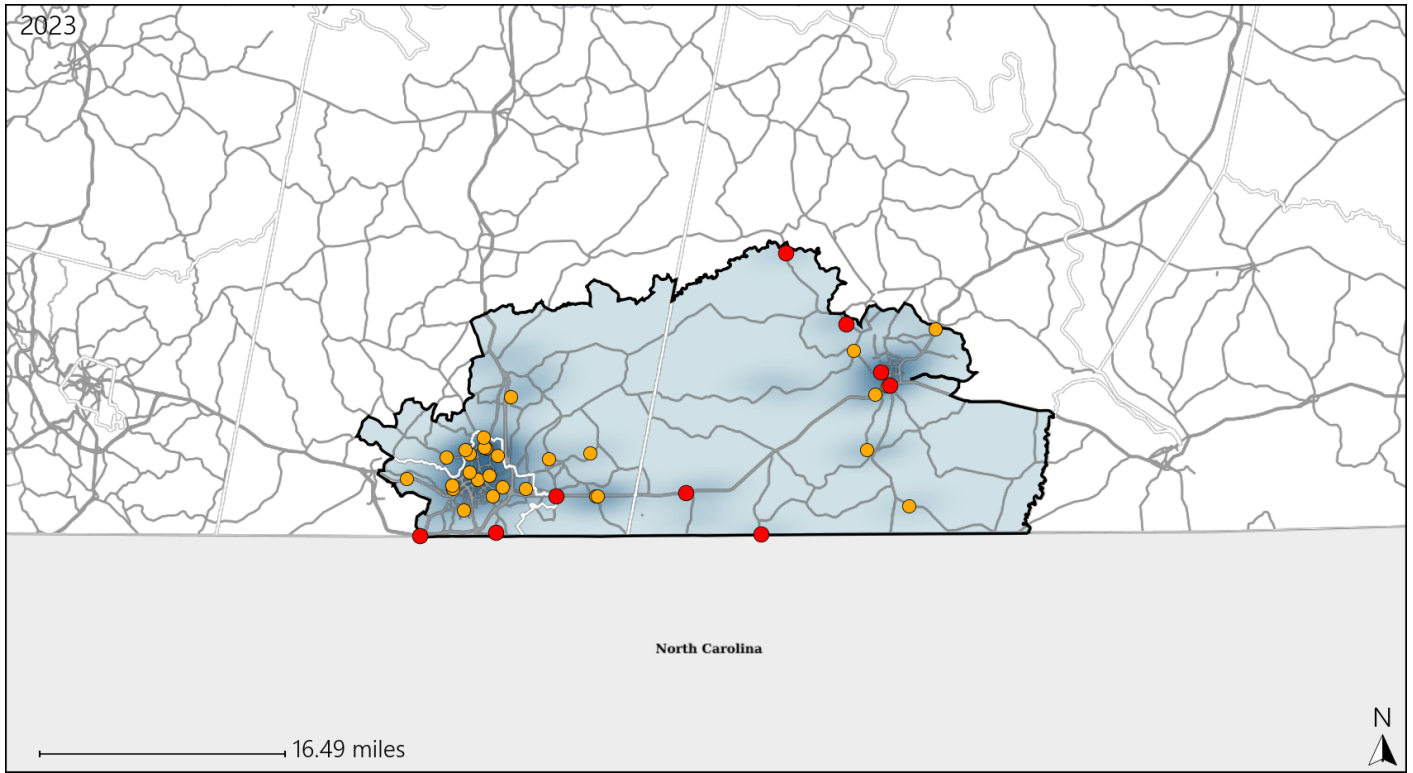


Available Crash Data - Calendar Year (CY)	CY 2020	CY 2021	CY 2022	CY 2023
Total Crashes	1501	1652	1533	1711
Fatal Crashes	12	16	16	16
Injury Crashes	505	552	557	585
Speed-Related Fatal Crashes	7	8	9	10
Percent of Speed-Related Fatal Crashes to Total Fatal Crashes	58%	50%	56%	63%
Speed-Related Injury Crashes	91	81	101	93
Percent of Speed-Related Injury Crashes to Total Injury Crashes	18%	15%	18%	16%

# Virginia House District 49 Unrestrained Crash Statistics

Report Generated May, 2024

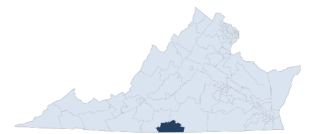
	Count	Highest Time Period(s)	Highest Day(s)	Highest Month(s)
<b>Fatal Crashes</b>	<b>9</b>	<b>6:00pm - 8:59pm</b>	<b>Wednesday</b>	<b>January • October</b>
<b>Unrestrained Fatalities</b>	<b>9</b>	<b>Midnight - 2:59am</b> (44%)	<b>(44%)</b>	<b>(44%)</b>
<b>Serious Injury Crashes</b>	<b>28</b>	<b>3:00pm - 5:59pm</b> <b>6:00am - 8:59am</b> (36%)	<b>Thursday</b> (21%)	<b>February</b> (18%)



## House District 49 Unrestrained-Related Crashes

- |                    |                        |
|--------------------|------------------------|
| Interstate Crashes | Non-interstate Crashes |
| ● Fatal            | ● Fatal                |
| ⊕ Serious Injury   | ⊕ Serious Injury       |

The blue gradient represents the density of all unrestrained-related crashes.

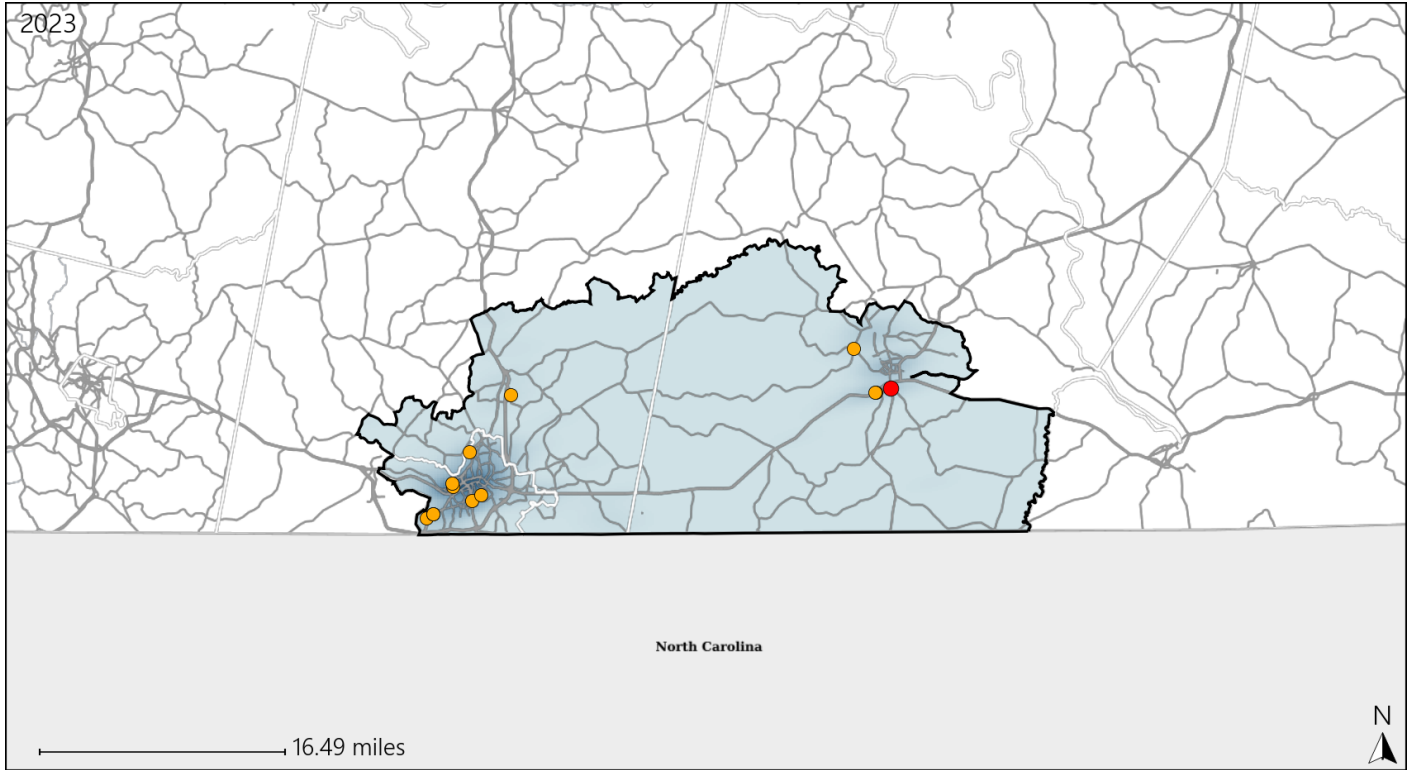


Available Crash Data - Calendar Year (CY)	CY 2020	CY 2021	CY 2022	CY 2023
Total Crashes	1501	1652	1533	1711
Fatalities	13	17	18	18
Injuries	664	762	746	827
Unrestrained Fatalities	4	9	11	9
Percent of Unrestrained Fatalities to Total Fatalities	31%	53%	61%	50%
Unrestrained Injuries	52	81	58	74
Percent of Unrestrained Injuries to Total Injuries	8%	11%	8%	9%

# Virginia House District 49 Distracted Driving Crash Statistics

Report Generated May, 2024

	Count	Highest Time Period(s)	Highest Day(s)	Highest Month(s)
<b>Fatal Crashes</b>	<b>1</b>	<b>9:00pm - 11:59pm</b>	<b>Tuesday</b>	<b>July</b>
<b>Resulting Fatalities</b>	<b>1</b>	<b>(100%)</b>	<b>(100%)</b>	<b>(100%)</b>
<b>Serious Injury Crashes</b>	<b>12</b>	<b>3:00pm - 5:59pm</b>	<b>Wednesday</b>	<b>April</b>
		<b>(33%)</b>	<b>(25%)</b>	<b>(25%)</b>



## House District 49 Distracted Driving-Related Crashes

- |                    |                        |
|--------------------|------------------------|
| Interstate Crashes | Non-interstate Crashes |
| Fatal              | Fatal                  |
| Serious Injury     | Serious Injury         |

The blue gradient represents the density of all distracted driving-related crashes.



Available Crash Data - Calendar Year (CY)	CY 2020	CY 2021	CY 2022	CY 2023
Total Crashes	1501	1652	1533	1711
Fatal Crashes	12	16	16	16
Injury Crashes	505	552	557	585
Distracted Driving-Related Fatal Crashes	1	1	0	1
Percent of Distracted Driving-Related Fatal Crashes to Total Fatal Crashes	8%	6%	0%	6%
Distracted Driving-Related Injury Crashes	87	74	75	71
Percent of Distracted Driving-Related Injury Crashes to Total Injury Crashes	17%	13%	13%	12%