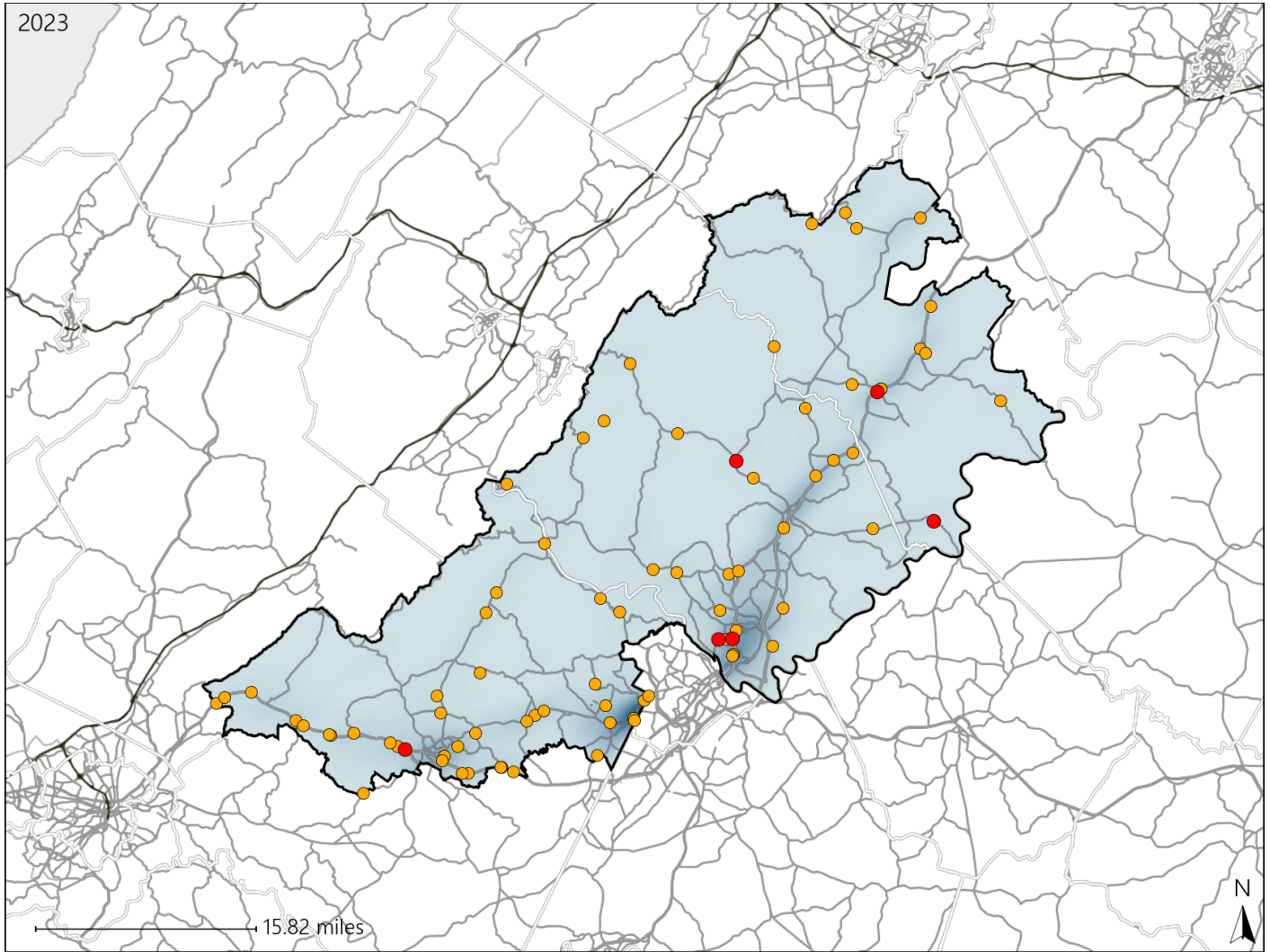


# Virginia House District 53 Crash Statistics

Report Generated May, 2024

	Count	Highest Time Period(s)	Highest Day(s)	Highest Month(s)
<b>Fatal Crashes</b>	<b>6</b>	3:00am - 5:59am	Friday	March - September
<b>Resulting Fatalities</b>	<b>6</b>	6:00pm - 8:59pm (34%)	(50%)	(66%)
<b>Serious Injury Crashes</b>	<b>80</b>	6:00pm - 8:59pm (29%)	Monday (19%)	October (14%)



## House District 53 Crashes

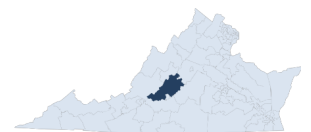
Interstate Crashes

- Fatal
- Serious Injury

Non-interstate Crashes

- Fatal
- Serious Injury

The blue gradient represents the density of all crashes.

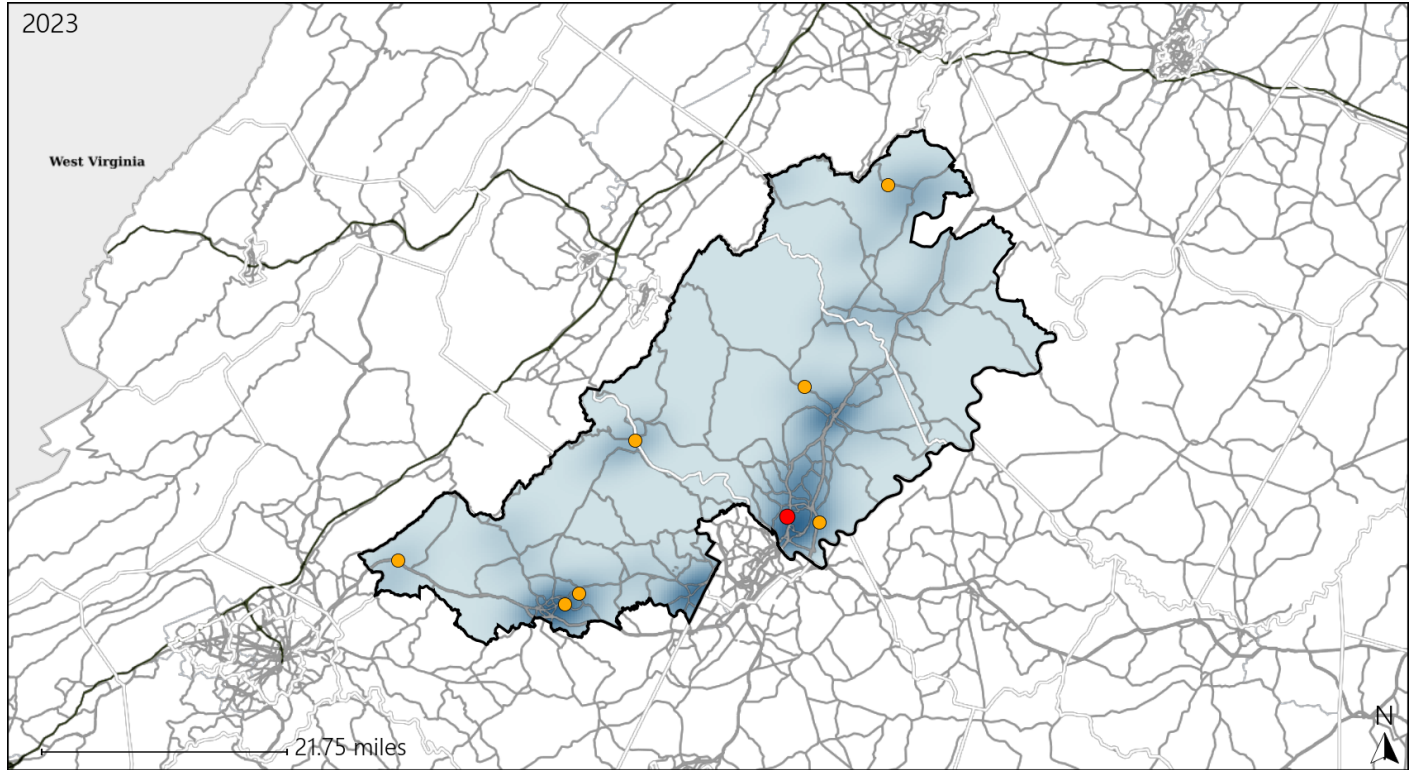


Available Crash Data - Calendar Year (CY)	CY 2020	CY 2021	CY 2022	CY 2023
Total Crashes	1075	1041	1087	1198
Fatal Crashes	12	18	11	6
Injury Crashes	344	322	259	312

# Virginia House District 53 Alcohol Crash Statistics

Report Generated May, 2024

	Count	Highest Time Period(s)	Highest Day(s)	Highest Month(s)
<b>Fatal Crashes</b>	<b>1</b>	<b>6:00pm - 8:59pm</b>	<b>Sunday</b>	<b>September</b>
<b>Resulting Fatalities</b>	<b>1</b>	<b>(100%)</b>	<b>(100%)</b>	<b>(100%)</b>
<b>Serious Injury Crashes</b>	<b>7</b>	<b>6:00pm - 8:59pm</b>	<b>Friday</b>	<b>April - December</b>
		<b>(43%)</b>	<b>(43%)</b>	<b>(58%)</b>



### House District 53 Alcohol-Related Crashes

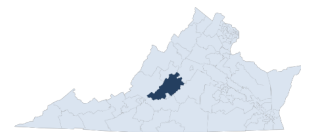
Interstate Crashes

Non-interstate Crashes

- Fatal
- Serious Injury

- Fatal
- Serious Injury

The blue gradient represents the density of all alcohol-related crashes.

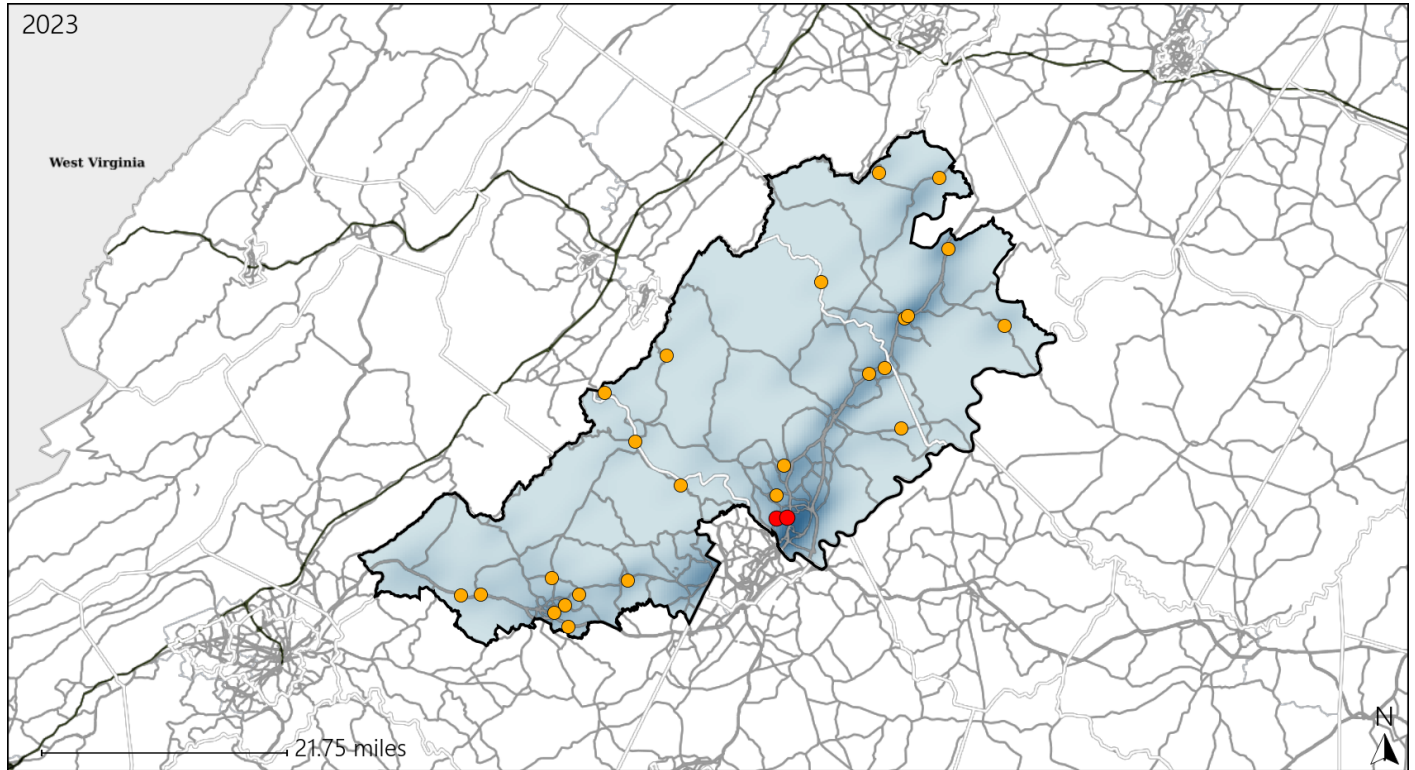


Available Crash Data - Calendar Year (CY)	CY 2020	CY 2021	CY 2022	CY 2023
Total Crashes	1075	1041	1087	1198
Fatal Crashes	12	18	11	6
Injury Crashes	344	322	259	312
Alcohol-Related Fatal Crashes	5	4	5	1
Percent of Alcohol-Related Fatal Crashes to Total Fatal Crashes	42%	22%	45%	17%
Alcohol-Related Injury Crashes	35	23	16	25
Percent of Alcohol-Related Injury Crashes to Total Injury Crashes	10%	7%	6%	8%

# Virginia House District 53 Speed Crash Statistics

Report Generated May, 2024

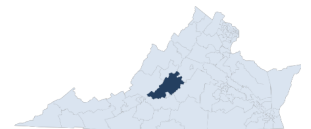
	Count	Highest Time Period(s)	Highest Day(s)	Highest Month(s)
<b>Fatal Crashes</b>	<b>2</b>	<b>6:00pm - 8:59pm</b>	<b>Friday • Sunday</b>	<b>October • September</b>
<b>Resulting Fatalities</b>	<b>2</b>	<b>Midnight - 2:59am</b> (100%)	<b>(100%)</b>	<b>(100%)</b>
<b>Serious Injury Crashes</b>	<b>24</b>	<b>Noon - 2:59pm</b> (29%)	<b>Monday • Saturday</b> (34%)	<b>October</b> (17%)



## House District 53 Speed-Related Crashes

Interstate Crashes                      Non-interstate Crashes  
 ● Fatal                                      ● Fatal  
 ● Serious Injury                          ● Serious Injury

The blue gradient represents the density of all speed-related crashes.

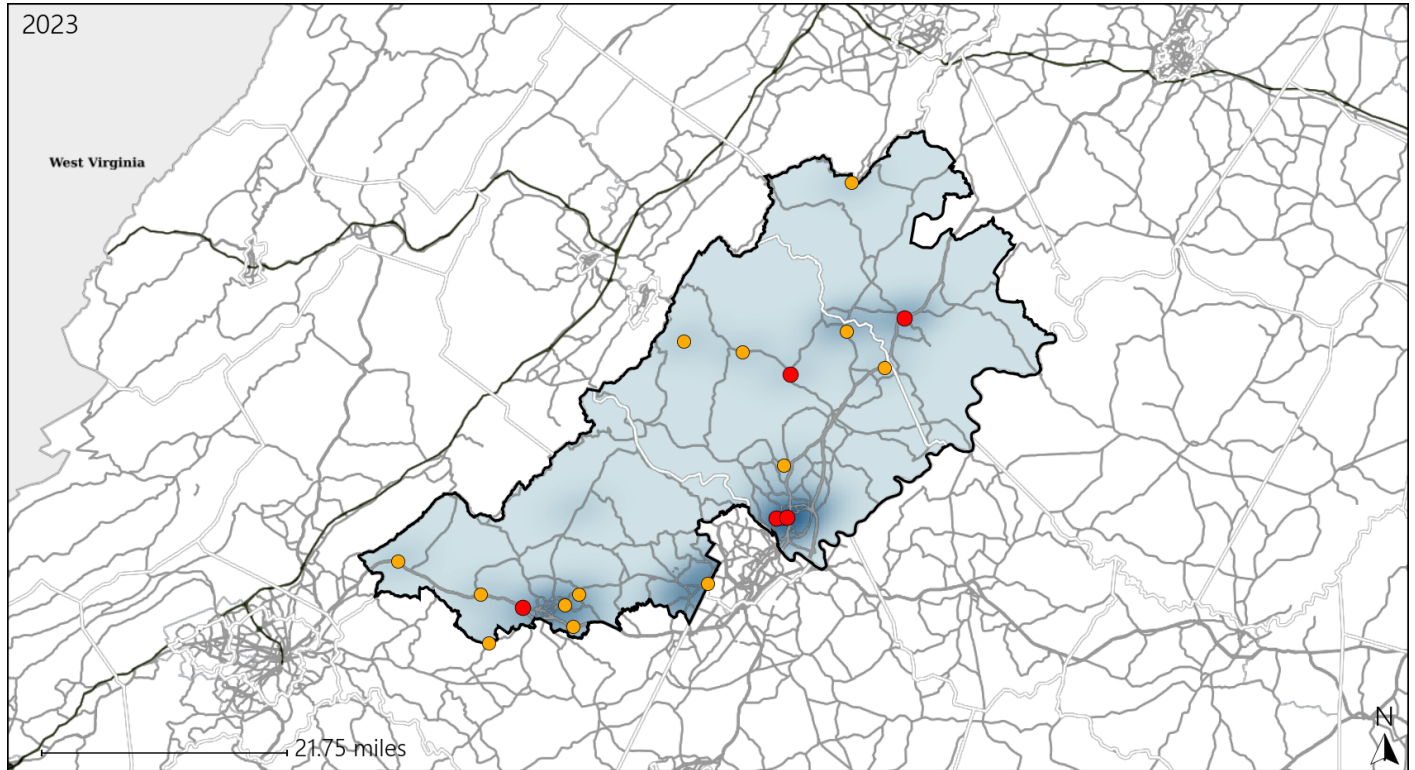


Available Crash Data - Calendar Year (CY)	CY 2020	CY 2021	CY 2022	CY 2023
Total Crashes	1075	1041	1087	1198
Fatal Crashes	12	18	11	6
Injury Crashes	344	322	259	312
Speed-Related Fatal Crashes	6	5	3	2
Percent of Speed-Related Fatal Crashes to Total Fatal Crashes	50%	28%	27%	33%
Speed-Related Injury Crashes	85	80	60	77
Percent of Speed-Related Injury Crashes to Total Injury Crashes	25%	25%	23%	25%

# Virginia House District 53 Unrestrained Crash Statistics

Report Generated May, 2024

	Count	Highest Time Period(s)	Highest Day(s)	Highest Month(s)
<b>Fatal Crashes</b>	<b>5</b>	3:00am - 5:59am	Friday	September
<b>Unrestrained Fatalities</b>	<b>5</b>	6:00pm - 8:59pm (40%)	(60%)	(40%)
<b>Serious Injury Crashes</b>	<b>15</b>	6:00pm - 8:59pm (27%)	Saturday (33%)	December (20%)



## House District 53 Unrestrained-Related Crashes

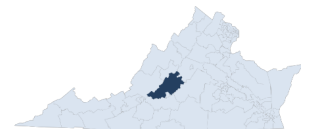
Interstate Crashes

Non-interstate Crashes

- Fatal
- Serious Injury

- Fatal
- Serious Injury

The blue gradient represents the density of all unrestrained-related crashes.



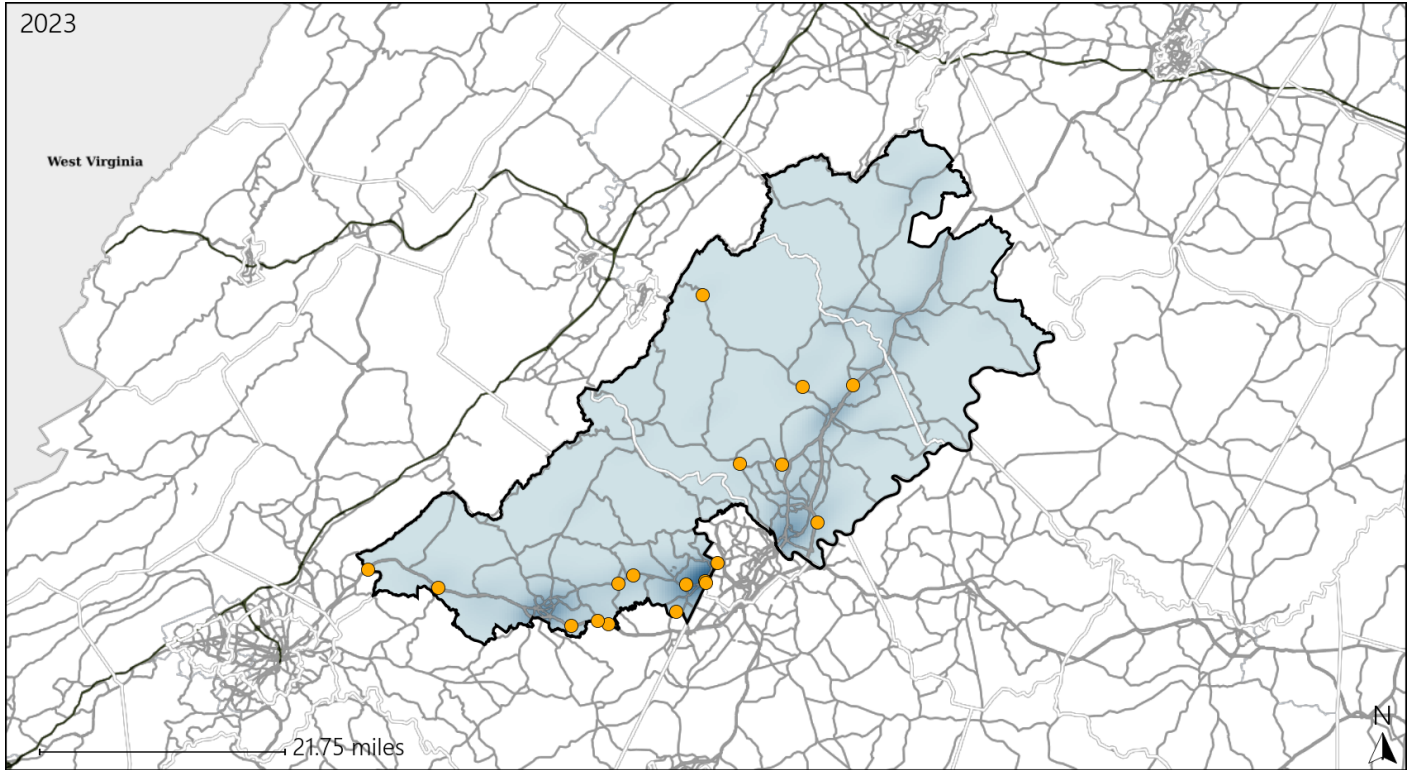
Available Crash Data - Calendar Year (CY)	CY 2020	CY 2021	CY 2022	CY 2023
Total Crashes	1075	1041	1087	1198
Fatalities	12	18	11	6
Injuries	500	492	399	464
Unrestrained Fatalities	4	8	7	5
Percent of Unrestrained Fatalities to Total Fatalities	33%	44%	64%	83%
Unrestrained Injuries	67	62	40	45
Percent of Unrestrained Injuries to Total Injuries	13%	13%	10%	10%



# Virginia House District 53 Distracted Driving Crash Statistics

Report Generated May, 2024

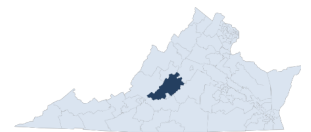
	Count	Highest Time Period(s)	Highest Day(s)	Highest Month(s)
<b>Fatal Crashes</b>	<b>0</b>	-	-	-
<b>Resulting Fatalities</b>	<b>0</b>	-	-	-
<b>Serious Injury Crashes</b>	<b>18</b>	<b>6:00pm - 8:59pm</b> (39%)	<b>Thursday</b> (28%)	<b>August</b> (22%)



## House District 53 Distracted Driving-Related Crashes

- |                    |                        |
|--------------------|------------------------|
| Interstate Crashes | Non-interstate Crashes |
| Fatal              | Fatal                  |
| Serious Injury     | Serious Injury         |

The blue gradient represents the density of all distracted driving-related crashes.



Available Crash Data - Calendar Year (CY)	CY 2020	CY 2021	CY 2022	CY 2023
Total Crashes	1075	1041	1087	1198
Fatal Crashes	12	18	11	6
Injury Crashes	344	322	259	312
Distracted Driving-Related Fatal Crashes	2	4	1	0
Percent of Distracted Driving-Related Fatal Crashes to Total Fatal Crashes	17%	22%	9%	0%
Distracted Driving-Related Injury Crashes	61	78	56	60
Percent of Distracted Driving-Related Injury Crashes to Total Injury Crashes	18%	24%	22%	19%