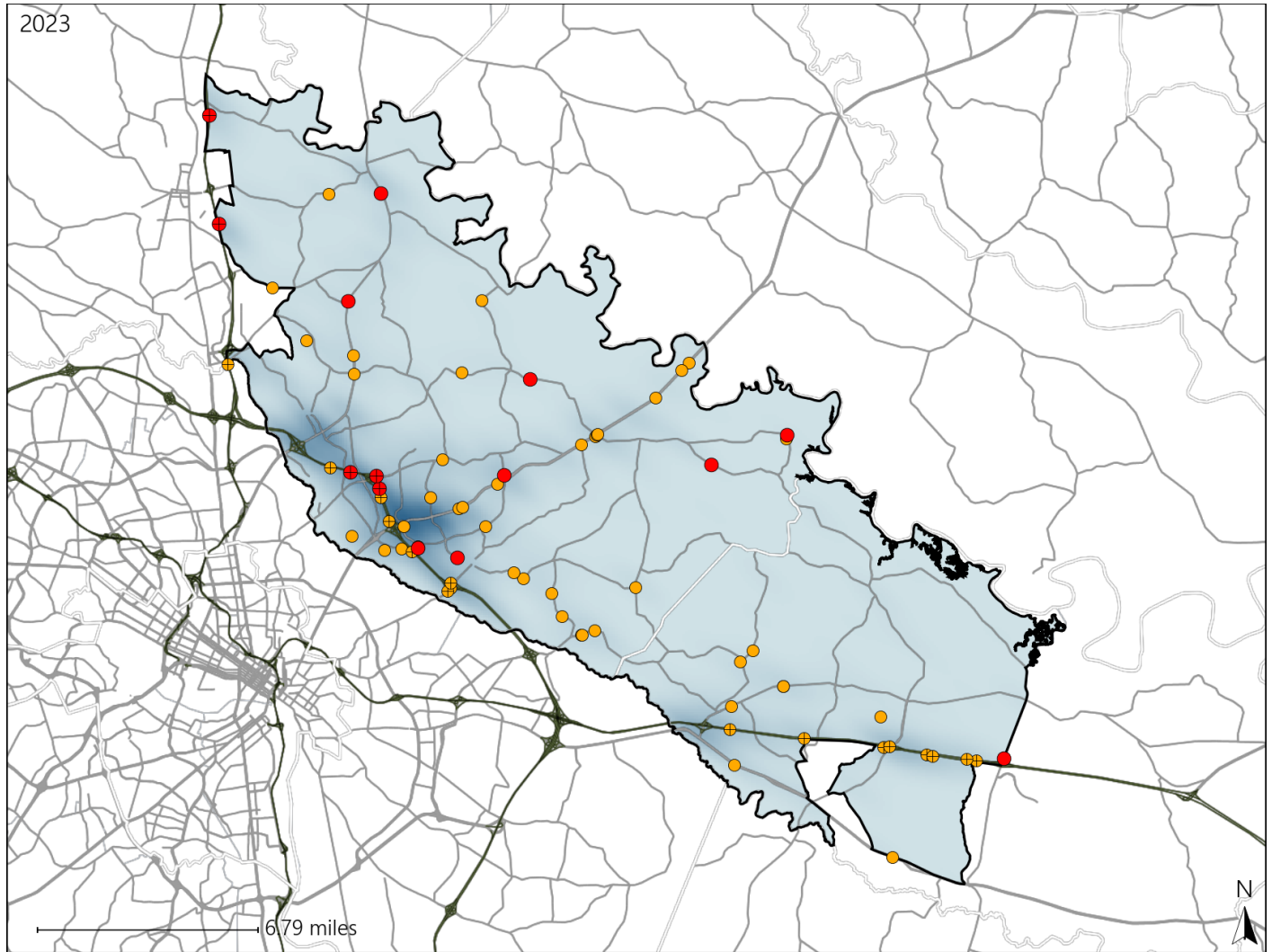


Virginia House District 60 Crash Statistics

Report Generated May, 2024

	Count	Highest Time Period(s)	Highest Day(s)	Highest Month(s)
Fatal Crashes	14	9:00pm - 11:59pm	Saturday	September
Resulting Fatalities	14	(29%)	(36%)	(21%)
Serious Injury Crashes	59	3:00pm - 5:59pm	Friday	July • November
		(22%)	(20%)	(28%)



House District 60 Crashes

Interstate Crashes

- Fatal
- Serious Injury

Non-interstate Crashes

- Fatal
- Serious Injury

The blue gradient represents the density of all crashes.

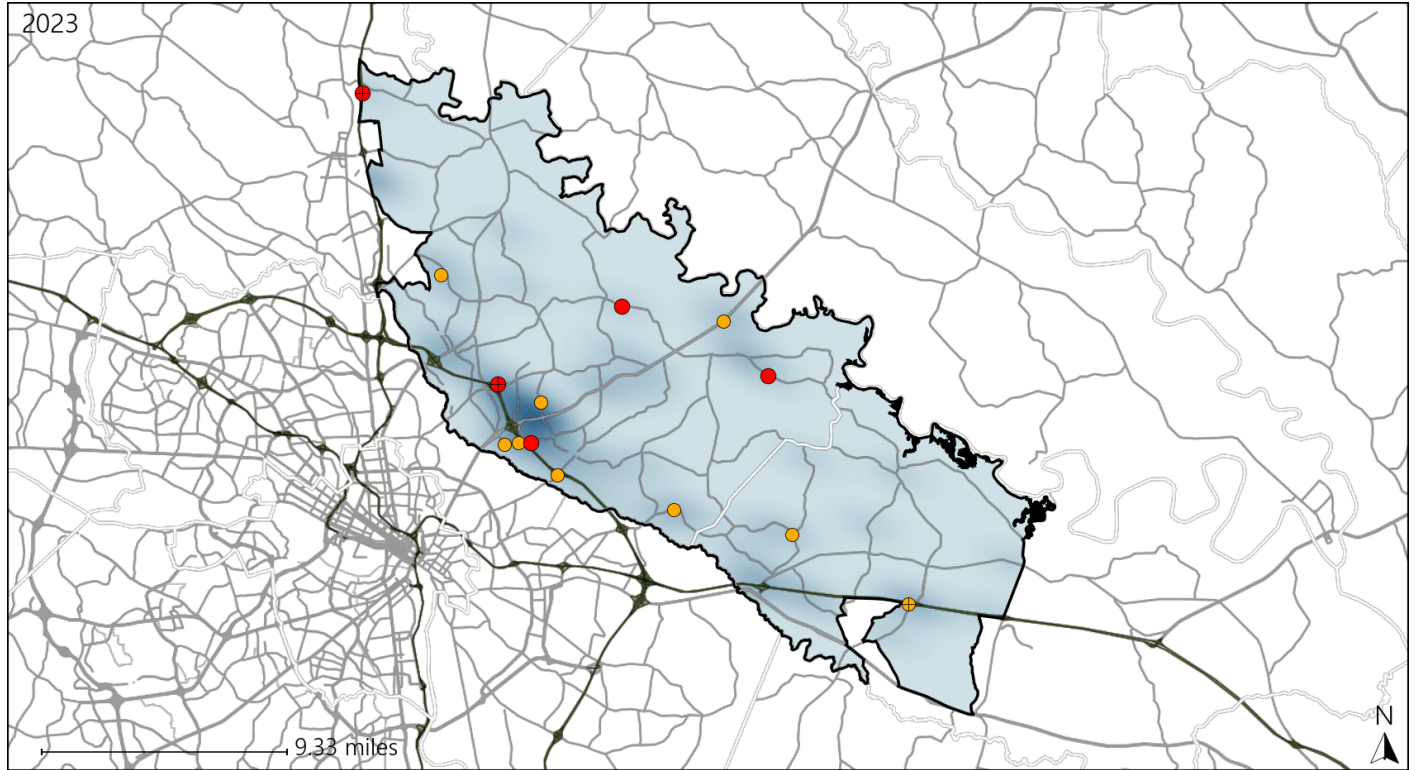


Available Crash Data - Calendar Year (CY)	CY 2020	CY 2021	CY 2022	CY 2023
Total Crashes	1103	1180	1226	1225
Fatal Crashes	12	13	8	14
Injury Crashes	299	309	332	313

Virginia House District 60 Alcohol Crash Statistics

Report Generated May, 2024

	Count	Highest Time Period(s)	Highest Day(s)	Highest Month(s)
Fatal Crashes	5	9:00pm - 11:59pm	Saturday • Sunday	August • March
Resulting Fatalities	5	(60%)	(80%)	(80%)
Serious Injury Crashes	9	9:00pm - 11:59pm	Friday • Saturday	January
		(33%)	(44%)	(33%)



House District 60 Alcohol-Related Crashes

Interstate Crashes Non-interstate Crashes
 ● Fatal ● Fatal
 ⊕ Serious Injury ⊕ Serious Injury

The blue gradient represents the density of all alcohol-related crashes.

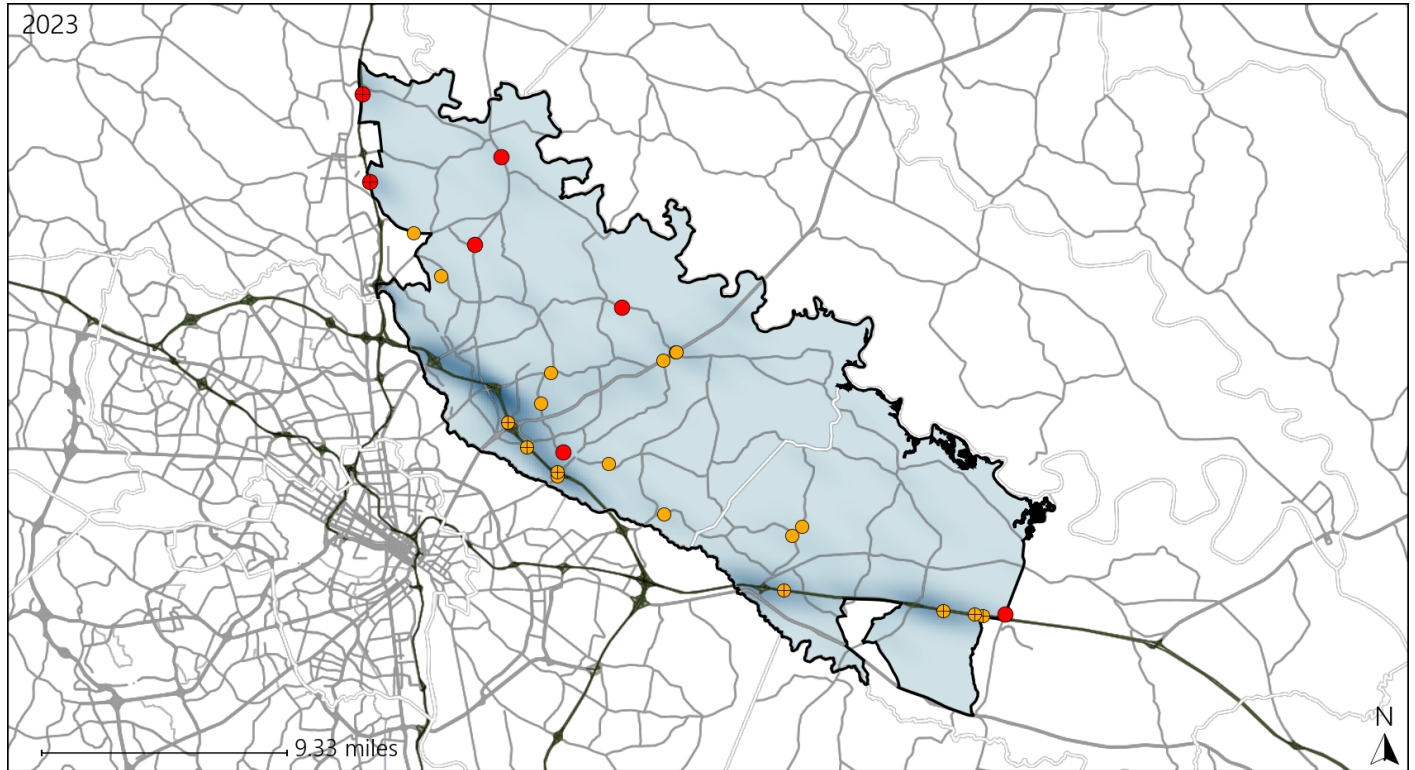


Available Crash Data - Calendar Year (CY)	CY 2020	CY 2021	CY 2022	CY 2023
Total Crashes	1103	1180	1226	1225
Fatal Crashes	12	13	8	14
Injury Crashes	299	309	332	313
Alcohol-Related Fatal Crashes	3	1	1	5
Percent of Alcohol-Related Fatal Crashes to Total Fatal Crashes	25%	8%	13%	36%
Alcohol-Related Injury Crashes	19	22	22	26
Percent of Alcohol-Related Injury Crashes to Total Injury Crashes	6%	7%	7%	8%

Virginia House District 60 Speed Crash Statistics

Report Generated May, 2024

	Count	Highest Time Period(s)	Highest Day(s)	Highest Month(s)
Fatal Crashes	7	6:00pm - 8:59pm	Saturday • Sunday	December
Resulting Fatalities	7	9:00pm - 11:59pm (58%)	(58%)	(29%)
Serious Injury Crashes	19	3:00pm - 5:59pm (26%)	Friday (21%)	December (16%)



House District 60 Speed-Related Crashes

Interstate Crashes Non-interstate Crashes
 ● Fatal ● Fatal
 ⊕ Serious Injury ⊕ Serious Injury

The blue gradient represents the density of all speed-related crashes.

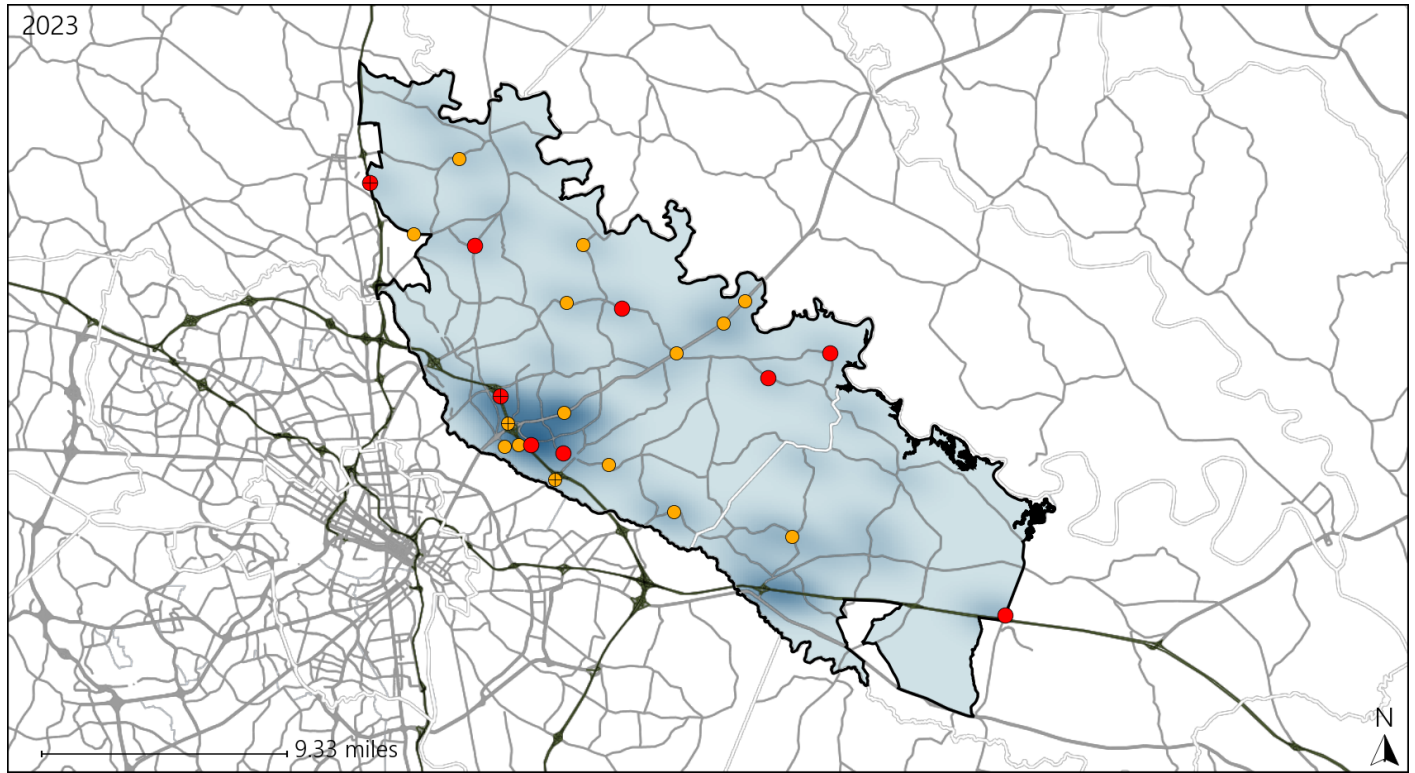


Available Crash Data - Calendar Year (CY)	CY 2020	CY 2021	CY 2022	CY 2023
Total Crashes	1103	1180	1226	1225
Fatal Crashes	12	13	8	14
Injury Crashes	299	309	332	313
Speed-Related Fatal Crashes	2	5	5	7
Percent of Speed-Related Fatal Crashes to Total Fatal Crashes	17%	38%	63%	50%
Speed-Related Injury Crashes	82	85	88	91
Percent of Speed-Related Injury Crashes to Total Injury Crashes	27%	28%	27%	29%

Virginia House District 60 Unrestrained Crash Statistics

Report Generated May, 2024

	Count	Highest Time Period(s)	Highest Day(s)	Highest Month(s)
Fatal Crashes	9	6:00am - 8:59am	Saturday	March - September
Unrestrained Fatalities	9	9:00pm - 11:59pm (44%)	(44%)	(44%)
Serious Injury Crashes	15	3:00am - 5:59am	Monday	January
		9:00pm - 11:59pm (40%)	(27%)	(33%)



House District 60 Unrestrained-Related Crashes

- | | |
|--------------------|------------------------|
| Interstate Crashes | Non-interstate Crashes |
| ● Fatal | ● Fatal |
| ⊕ Serious Injury | ⊕ Serious Injury |

The blue gradient represents the density of all unrestrained-related crashes.

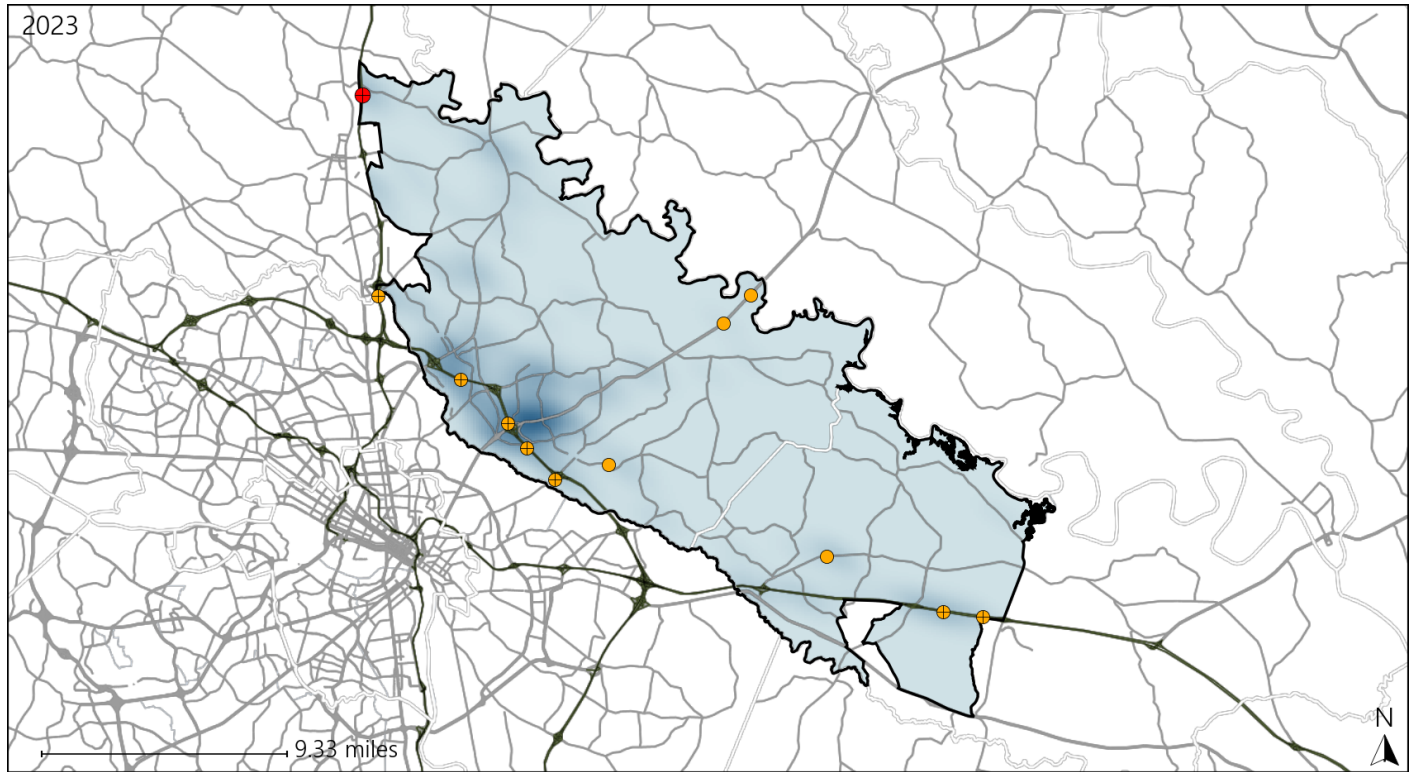


Available Crash Data - Calendar Year (CY)	CY 2020	CY 2021	CY 2022	CY 2023
Total Crashes	1103	1180	1226	1225
Fatalities	12	14	8	14
Injuries	430	462	492	479
Unrestrained Fatalities	3	4	3	9
Percent of Unrestrained Fatalities to Total Fatalities	25%	29%	38%	64%
Unrestrained Injuries	32	50	39	53
Percent of Unrestrained Injuries to Total Injuries	7%	11%	8%	11%

Virginia House District 60 Distracted Driving Crash Statistics

Report Generated May, 2024

	Count	Highest Time Period(s)	Highest Day(s)	Highest Month(s)
Fatal Crashes	1	6:00pm - 8:59pm	Wednesday	August
Resulting Fatalities	1	(100%)	(100%)	(100%)
Serious Injury Crashes	11	3:00am - 5:59am	Saturday	April • July
		(36%)	(36%)	(36%)



House District 60 Distracted Driving-Related Crashes

- | | |
|--------------------|------------------------|
| Interstate Crashes | Non-interstate Crashes |
| Fatal | Fatal |
| Serious Injury | Serious Injury |

The blue gradient represents the density of all distracted driving-related crashes.



Available Crash Data - Calendar Year (CY)	CY 2020	CY 2021	CY 2022	CY 2023
Total Crashes	1103	1180	1226	1225
Fatal Crashes	12	13	8	14
Injury Crashes	299	309	332	313
Distracted Driving-Related Fatal Crashes	1	1	2	1
Percent of Distracted Driving-Related Fatal Crashes to Total Fatal Crashes	8%	8%	25%	7%
Distracted Driving-Related Injury Crashes	82	82	70	54
Percent of Distracted Driving-Related Injury Crashes to Total Injury Crashes	27%	27%	21%	17%