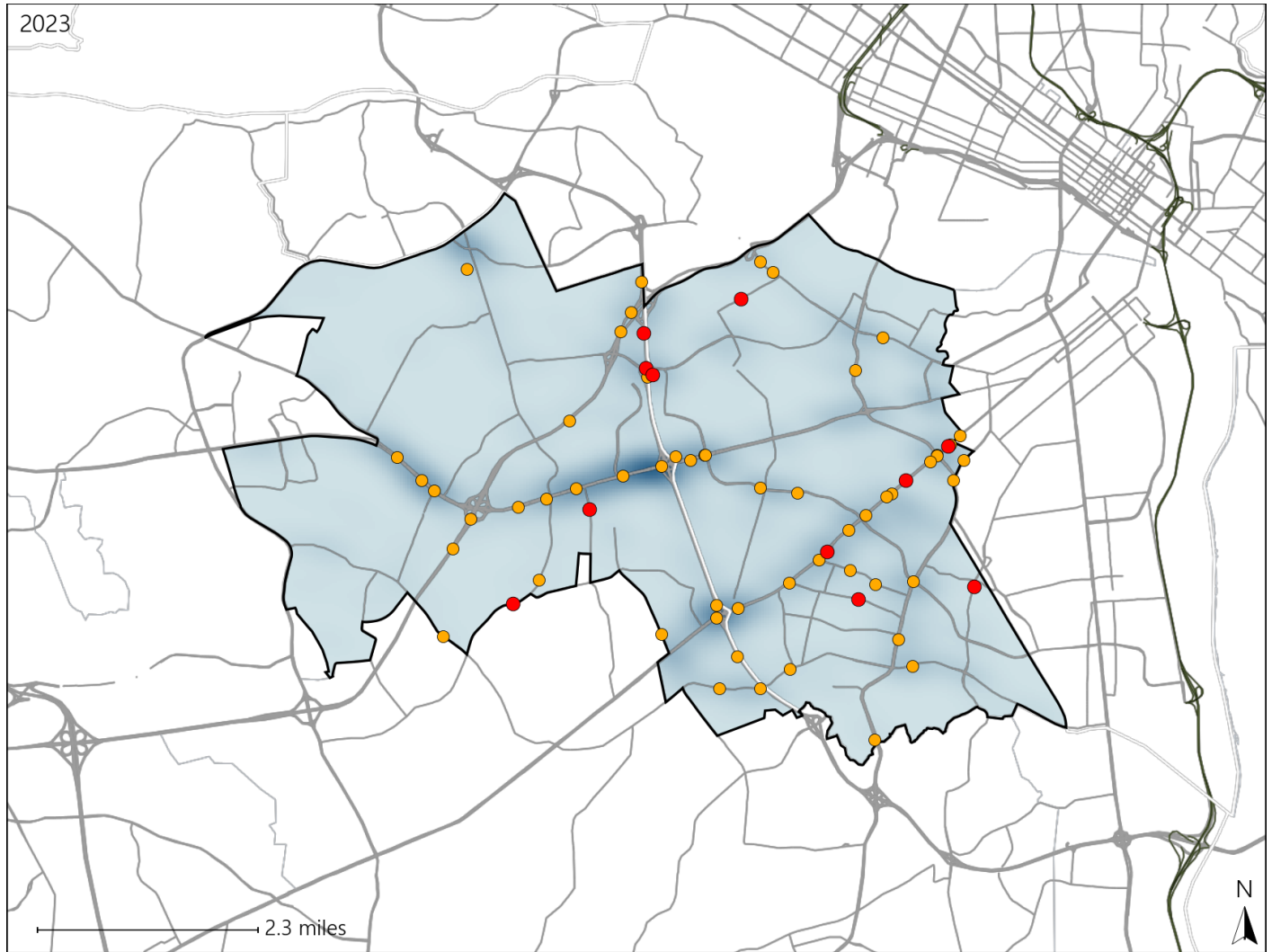


Virginia House District 77 Crash Statistics

Report Generated May, 2024

	Count	Highest Time Period(s)	Highest Day(s)	Highest Month(s)
Fatal Crashes	11	3:00pm - 5:59pm	Friday	May
Resulting Fatalities	11	(36%)	(45%)	(27%)
Serious Injury Crashes	55	3:00pm - 5:59pm	Friday	January
		(20%)	(22%)	(16%)



House District 77 Crashes

Interstate Crashes

- Fatal
- Serious Injury

Non-interstate Crashes

- Fatal
- Serious Injury

The blue gradient represents the density of all crashes.

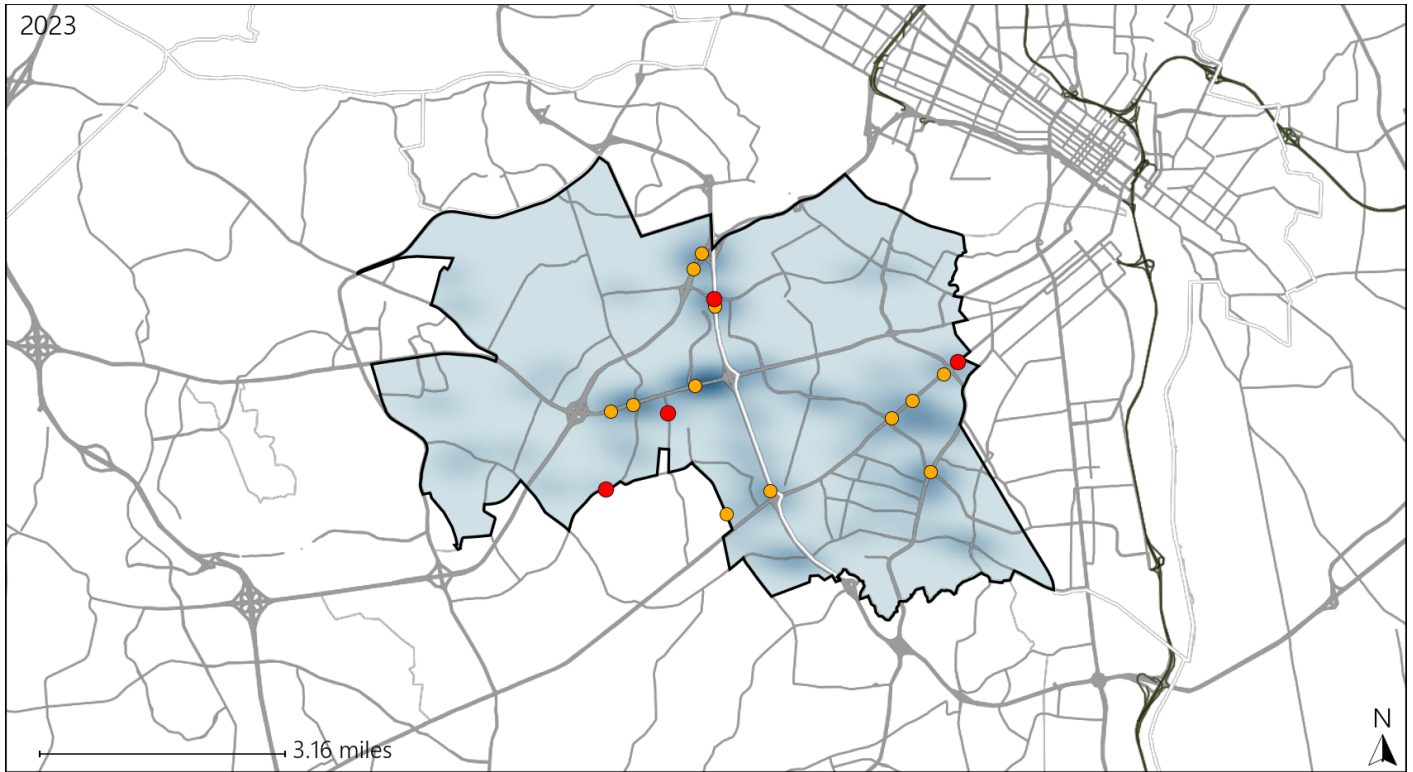


Available Crash Data - Calendar Year (CY)	CY 2020	CY 2021	CY 2022	CY 2023
Total Crashes	1381	1438	1464	1519
Fatal Crashes	6	12	13	11
Injury Crashes	435	398	391	433

Virginia House District 77 Alcohol Crash Statistics

Report Generated May, 2024

	Count	Highest Time Period(s)	Highest Day(s)	Highest Month(s)
Fatal Crashes	4	3:00pm - 5:59pm	Friday • Tuesday	June • May
Resulting Fatalities	4	(50%)	(100%)	(50%)
Serious Injury Crashes	12	Midnight - 2:59am	Friday • Sunday	May
		(50%)	(50%)	(33%)




House District 77 Alcohol-Related Crashes


Interstate Crashes

Non-interstate Crashes

 Fatal

 Fatal

 Serious Injury

 Serious Injury

The blue gradient represents the density of all alcohol-related crashes.

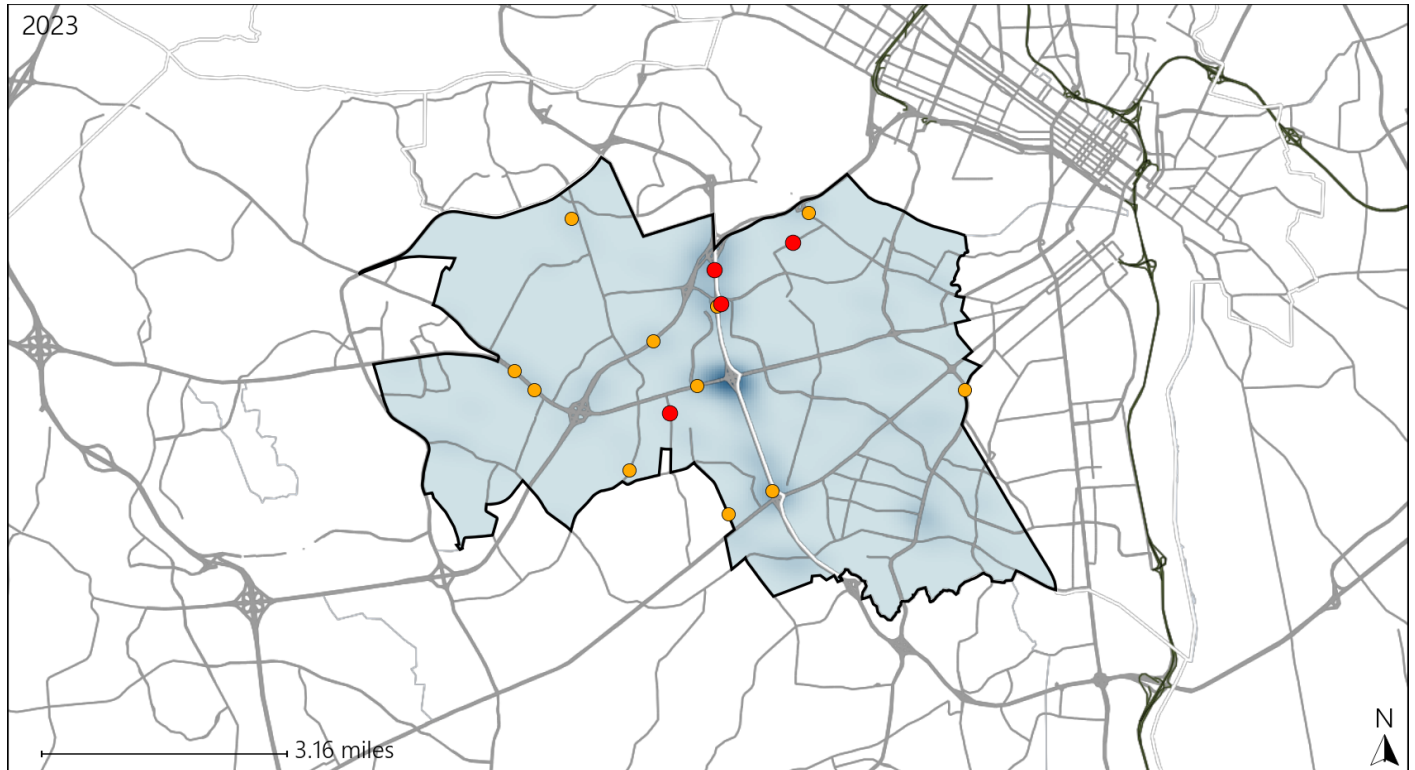


Available Crash Data - Calendar Year (CY)	CY 2020	CY 2021	CY 2022	CY 2023
Total Crashes	1381	1438	1464	1519
Fatal Crashes	6	12	13	11
Injury Crashes	435	398	391	433
Alcohol-Related Fatal Crashes	2	2	6	4
Percent of Alcohol-Related Fatal Crashes to Total Fatal Crashes	33%	17%	46%	36%
Alcohol-Related Injury Crashes	29	27	27	37
Percent of Alcohol-Related Injury Crashes to Total Injury Crashes	7%	7%	7%	9%

Virginia House District 77 Speed Crash Statistics

Report Generated May, 2024

	Count	Highest Time Period(s)	Highest Day(s)	Highest Month(s)
Fatal Crashes	4	3:00pm - 5:59pm	Monday	January • July
Resulting Fatalities	4	(50%)	(75%)	(50%)
Serious Injury Crashes	11	Midnight - 2:59am	Friday • Wednesday	January • May
		(27%)	(54%)	(54%)



House District 77 Speed-Related Crashes

Interstate Crashes Non-interstate Crashes
 ● Fatal ● Fatal
 ● Serious Injury ● Serious Injury

The blue gradient represents the density of all speed-related crashes.



Available Crash Data - Calendar Year (CY)	CY 2020	CY 2021	CY 2022	CY 2023
Total Crashes	1381	1438	1464	1519
Fatal Crashes	6	12	13	11
Injury Crashes	435	398	391	433
Speed-Related Fatal Crashes	2	4	7	4
Percent of Speed-Related Fatal Crashes to Total Fatal Crashes	33%	33%	54%	36%
Speed-Related Injury Crashes	57	73	65	66
Percent of Speed-Related Injury Crashes to Total Injury Crashes	13%	18%	17%	15%

Virginia House District 77 Unrestrained Crash Statistics

Report Generated May, 2024

	Count	Highest Time Period(s)	Highest Day(s)	Highest Month(s)
Fatal Crashes	4	3:00pm - 5:59pm	Friday	June
Unrestrained Fatalities	4	(50%)	(50%)	(50%)
Serious Injury Crashes	9	3:00pm - 5:59pm Midnight - 2:59am	Sunday	April • May
		(44%)	(33%)	(44%)



House District 77 Unrestrained-Related Crashes

- | | |
|--------------------|------------------------|
| Interstate Crashes | Non-interstate Crashes |
| ● Fatal | ● Fatal |
| ⊕ Serious Injury | ⊕ Serious Injury |

The blue gradient represents the density of all unrestrained-related crashes.

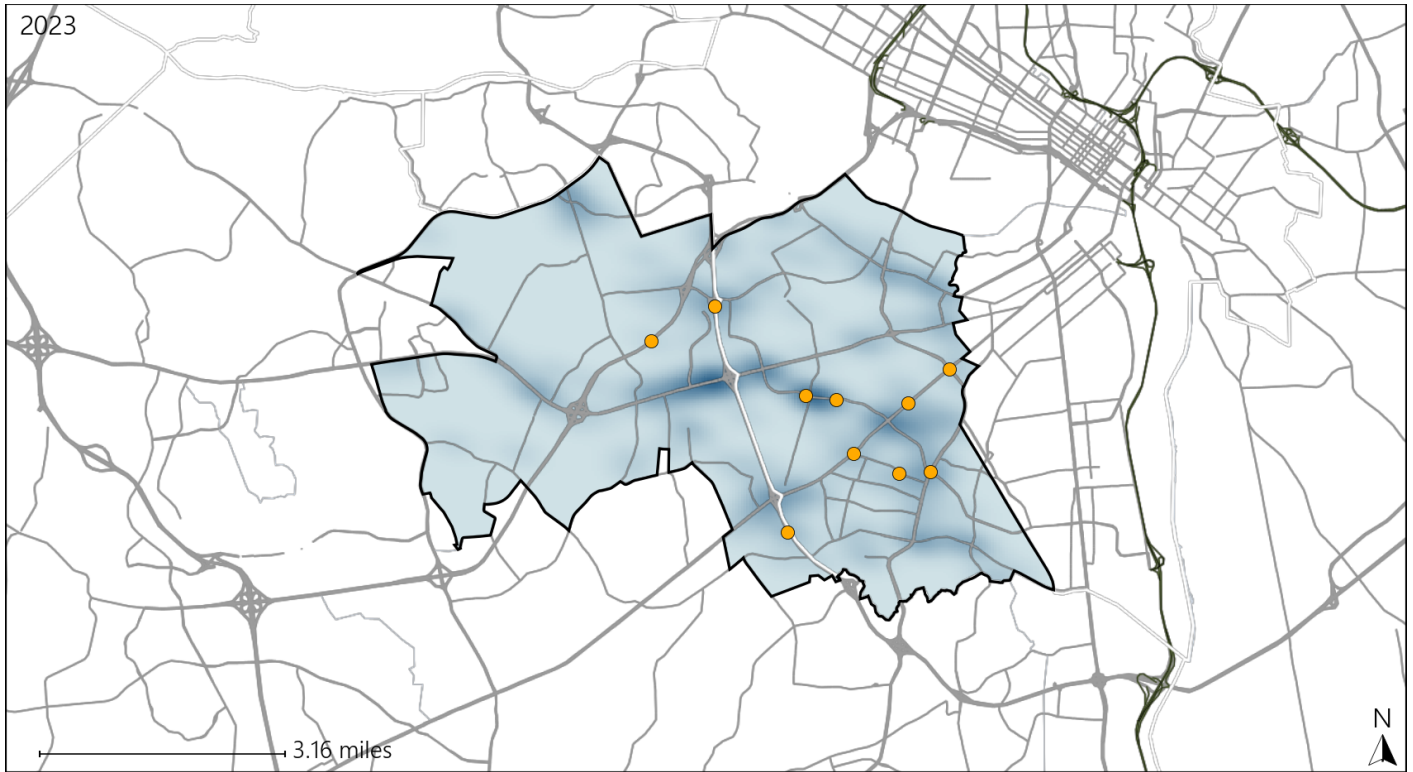


Available Crash Data - Calendar Year (CY)	CY 2020	CY 2021	CY 2022	CY 2023
Total Crashes	1381	1438	1464	1519
Fatalities	6	12	13	11
Injuries	730	693	691	750
Unrestrained Fatalities	0	3	5	4
Percent of Unrestrained Fatalities to Total Fatalities	0%	25%	38%	36%
Unrestrained Injuries	40	35	38	35
Percent of Unrestrained Injuries to Total Injuries	5%	5%	5%	5%

Virginia House District 77 Distracted Driving Crash Statistics

Report Generated May, 2024

	Count	Highest Time Period(s)	Highest Day(s)	Highest Month(s)
Fatal Crashes	0	-	-	-
Resulting Fatalities	0	-	-	-
Serious Injury Crashes	10	9:00pm - 11:59pm (40%)	Saturday (40%)	January (40%)



House District 77 Distracted Driving-Related Crashes

- | | |
|--------------------|------------------------|
| Interstate Crashes | Non-interstate Crashes |
| Fatal | Fatal |
| Serious Injury | Serious Injury |

The blue gradient represents the density of all distracted driving-related crashes.



Available Crash Data - Calendar Year (CY)	CY 2020	CY 2021	CY 2022	CY 2023
Total Crashes	1381	1438	1464	1519
Fatal Crashes	6	12	13	11
Injury Crashes	435	398	391	433
Distracted Driving-Related Fatal Crashes	0	1	0	0
Percent of Distracted Driving-Related Fatal Crashes to Total Fatal Crashes	0%	8%	0%	0%
Distracted Driving-Related Injury Crashes	76	63	55	69
Percent of Distracted Driving-Related Injury Crashes to Total Injury Crashes	17%	16%	14%	16%