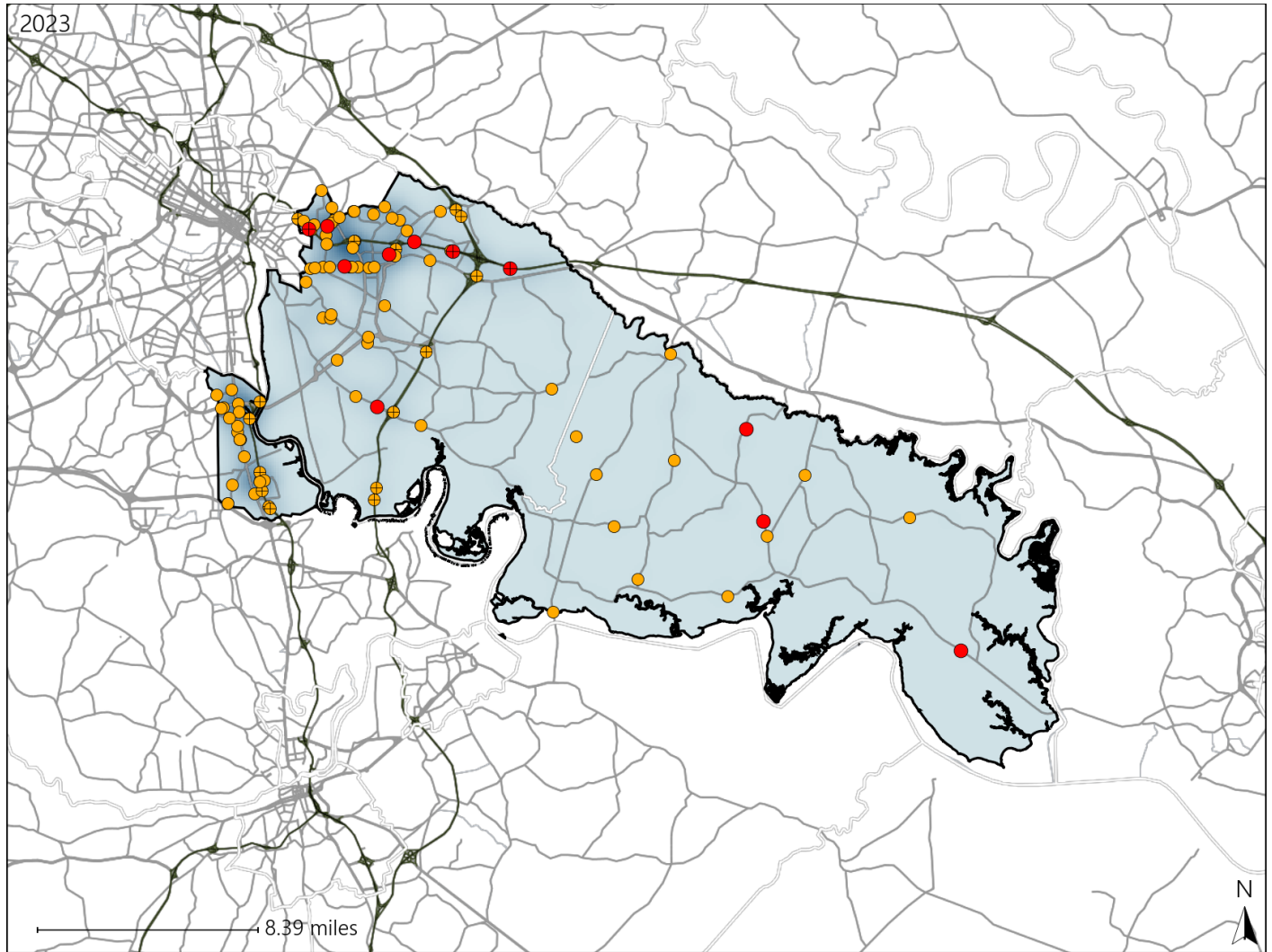


Virginia House District 81 Crash Statistics

Report Generated May, 2024

	Count	Highest Time Period(s)	Highest Day(s)	Highest Month(s)
Fatal Crashes	11	6:00pm - 8:59pm	Monday	July • May
Resulting Fatalities	12	(36%)	(27%)	(36%)
Serious Injury Crashes	94	6:00pm - 8:59pm	Friday	June • October
		(21%)	(23%)	(24%)



House District 81 Crashes

Interstate Crashes

- Fatal
- Serious Injury

Non-interstate Crashes

- Fatal
- Serious Injury

The blue gradient represents the density of all crashes.

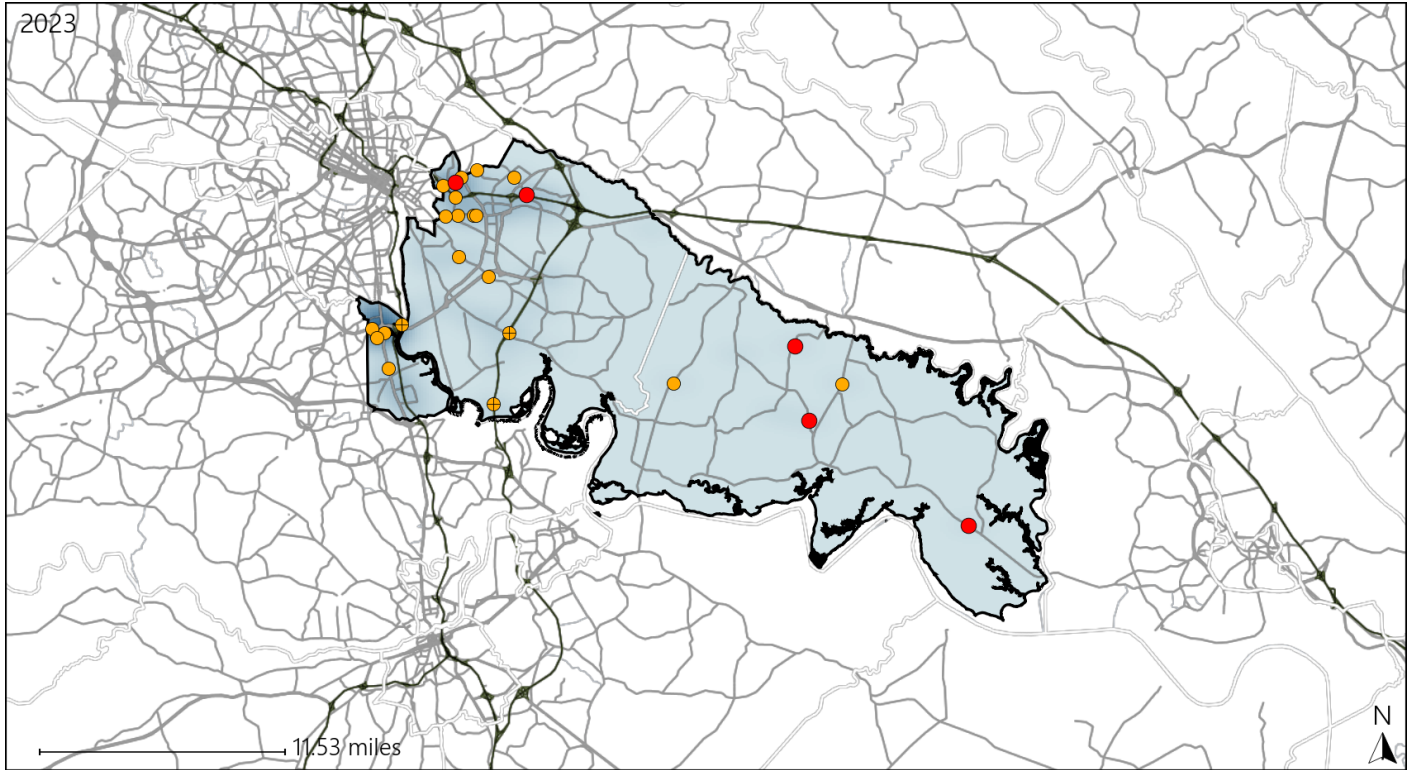


Available Crash Data - Calendar Year (CY)	CY 2020	CY 2021	CY 2022	CY 2023
Total Crashes	1686	1889	1935	1771
Fatal Crashes	18	15	19	11
Injury Crashes	499	493	493	514

Virginia House District 81 Alcohol Crash Statistics

Report Generated May, 2024

	Count	Highest Time Period(s)	Highest Day(s)	Highest Month(s)
Fatal Crashes	5	6:00pm - 8:59pm	Tuesday	July
Resulting Fatalities	5	(80%)	(40%)	(40%)
Serious Injury Crashes	20	9:00pm - 11:59pm	Friday	April
		(45%)	(25%)	(25%)




House District 81 Alcohol-Related Crashes


Interstate Crashes

Non-interstate Crashes

 Fatal

 Fatal

 Serious Injury

 Serious Injury

The blue gradient represents the density of all alcohol-related crashes.

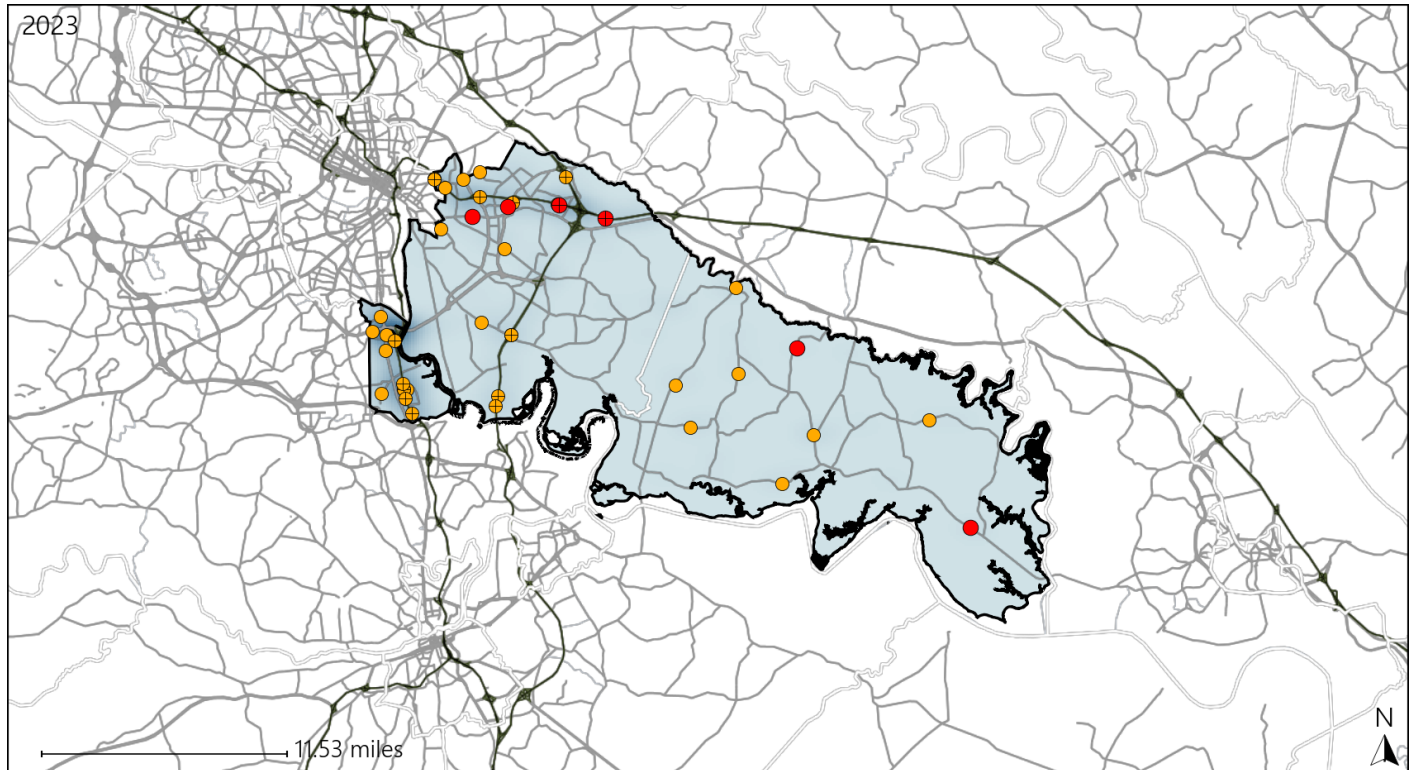


Available Crash Data - Calendar Year (CY)	CY 2020	CY 2021	CY 2022	CY 2023
Total Crashes	1686	1889	1935	1771
Fatal Crashes	18	15	19	11
Injury Crashes	499	493	493	514
Alcohol-Related Fatal Crashes	5	4	8	5
Percent of Alcohol-Related Fatal Crashes to Total Fatal Crashes	28%	27%	42%	45%
Alcohol-Related Injury Crashes	41	43	36	41
Percent of Alcohol-Related Injury Crashes to Total Injury Crashes	8%	9%	7%	8%

Virginia House District 81 Speed Crash Statistics

Report Generated May, 2024

	Count	Highest Time Period(s)	Highest Day(s)	Highest Month(s)
Fatal Crashes	6	6:00pm - 8:59pm	Saturday	April • August
Resulting Fatalities	7	(33%)	(33%)	(34%)
Serious Injury Crashes	35	6:00pm - 8:59pm	Saturday	June • October
		(26%)	(23%)	(34%)



House District 81 Speed-Related Crashes

Interstate Crashes Non-interstate Crashes
 ● Fatal ● Fatal
 ⊕ Serious Injury ⊕ Serious Injury

The blue gradient represents the density of all speed-related crashes.

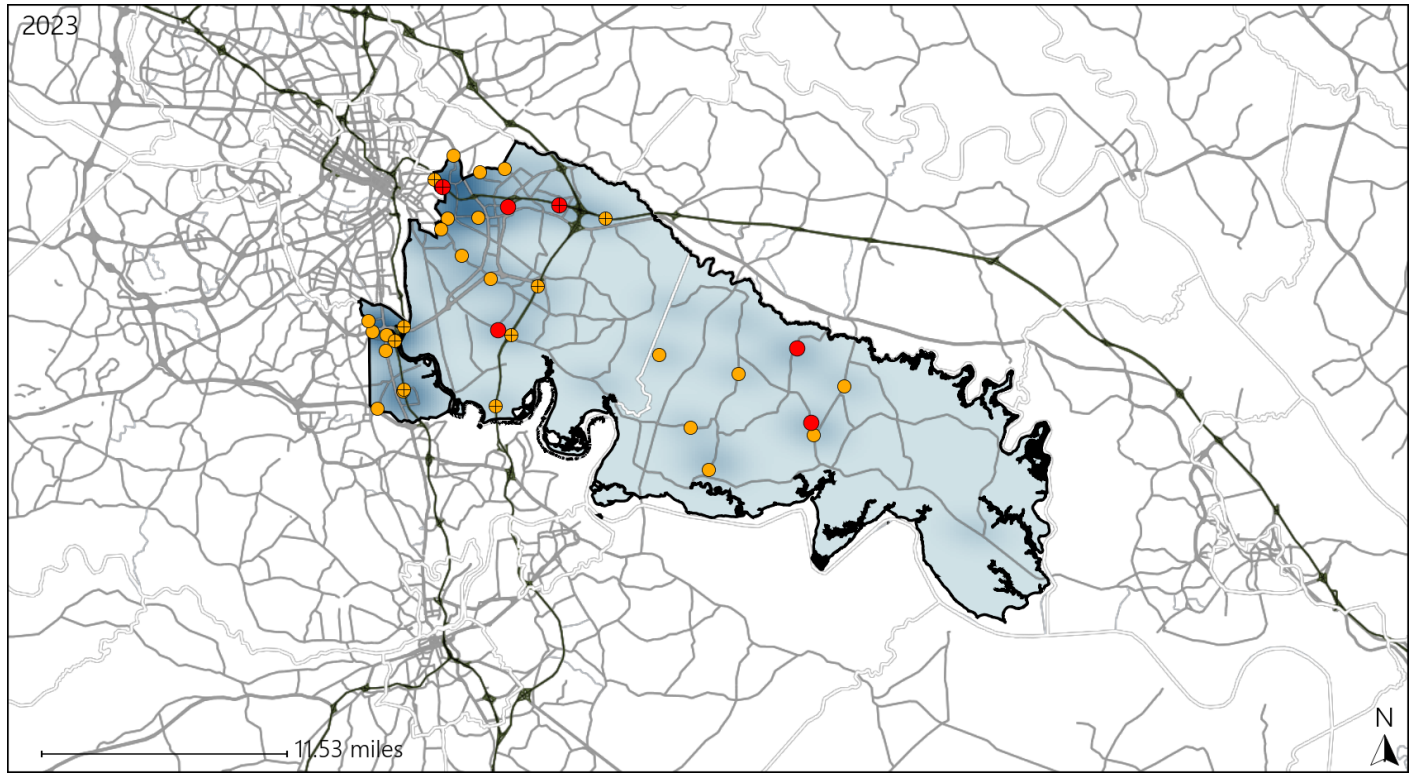


Available Crash Data - Calendar Year (CY)	CY 2020	CY 2021	CY 2022	CY 2023
Total Crashes	1686	1889	1935	1771
Fatal Crashes	18	15	19	11
Injury Crashes	499	493	493	514
Speed-Related Fatal Crashes	8	3	6	6
Percent of Speed-Related Fatal Crashes to Total Fatal Crashes	44%	20%	32%	55%
Speed-Related Injury Crashes	112	108	97	110
Percent of Speed-Related Injury Crashes to Total Injury Crashes	22%	22%	20%	21%

Virginia House District 81 Unrestrained Crash Statistics

Report Generated May, 2024

	Count	Highest Time Period(s)	Highest Day(s)	Highest Month(s)
Fatal Crashes	6	9:00am - 11:59am	Monday • Saturday	July
Unrestrained Fatalities	6	Midnight - 2:59am (66%)	(66%)	(33%)
Serious Injury Crashes	28	6:00pm - 8:59pm 9:00am - 11:59am (36%)	Friday (21%)	January • July (28%)



House District 81 Unrestrained-Related Crashes

- | | |
|--------------------|------------------------|
| Interstate Crashes | Non-interstate Crashes |
| ● Fatal | ● Fatal |
| ⊕ Serious Injury | ⊕ Serious Injury |

The blue gradient represents the density of all unrestrained-related crashes.

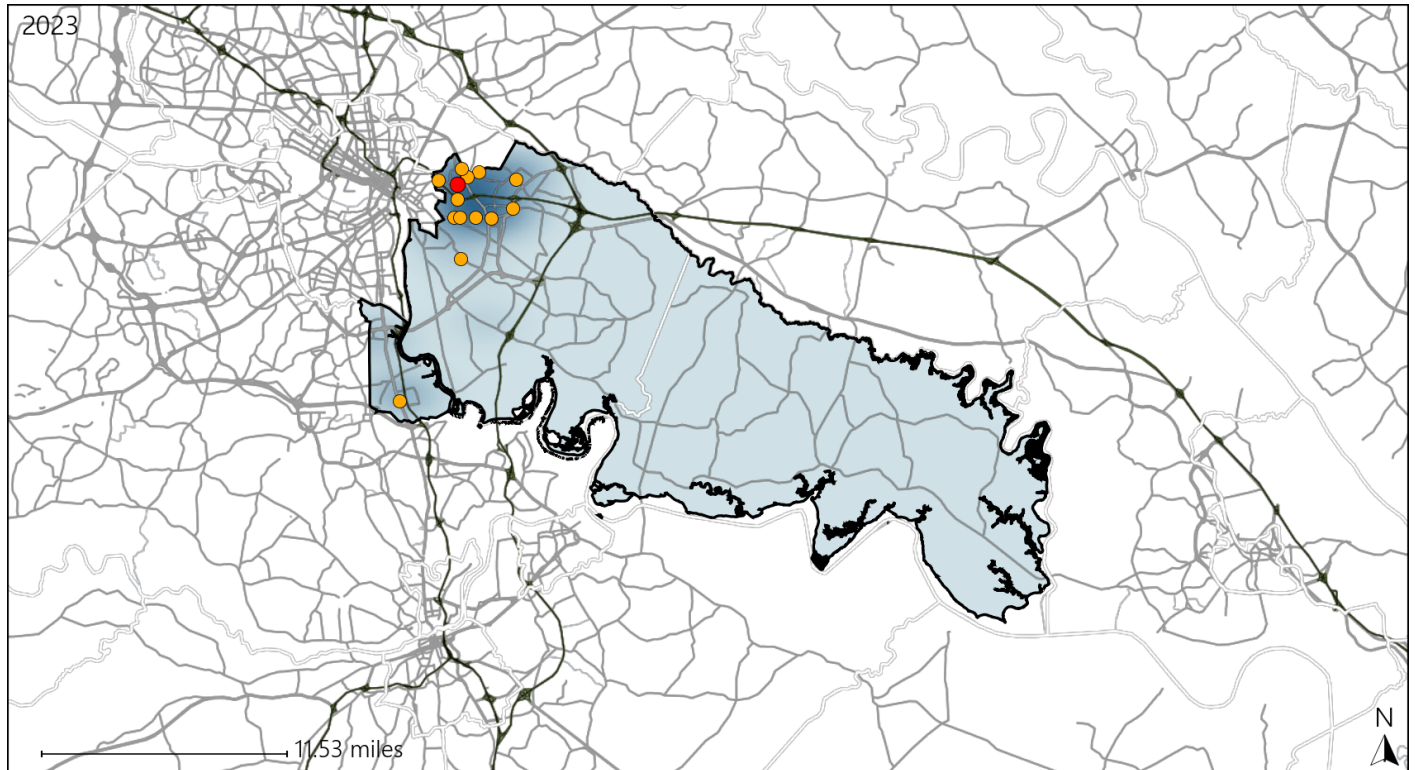


Available Crash Data - Calendar Year (CY)	CY 2020	CY 2021	CY 2022	CY 2023
Total Crashes	1686	1889	1935	1771
Fatalities	20	15	20	12
Injuries	856	835	850	851
Unrestrained Fatalities	9	3	11	6
Percent of Unrestrained Fatalities to Total Fatalities	45%	20%	55%	50%
Unrestrained Injuries	77	72	53	70
Percent of Unrestrained Injuries to Total Injuries	9%	9%	6%	8%

Virginia House District 81 Pedestrian Crash Statistics

Report Generated May, 2024

	Count	Highest Time Period(s)	Highest Day(s)	Highest Month(s)
Fatal Crashes	1	6:00pm - 8:59pm	Tuesday	February
Pedestrian Fatalities	1	(100%)	(100%)	(100%)
Serious Injury Crashes	14	9:00pm - 11:59pm	Monday • Sunday	April
		(36%)	(42%)	(29%)



House District 81 Pedestrian-Related Crashes

- | | |
|--------------------|------------------------|
| Interstate Crashes | Non-interstate Crashes |
| Fatal | Fatal |
| Serious Injury | Serious Injury |

The blue gradient represents the density of all pedestrian-related crashes.

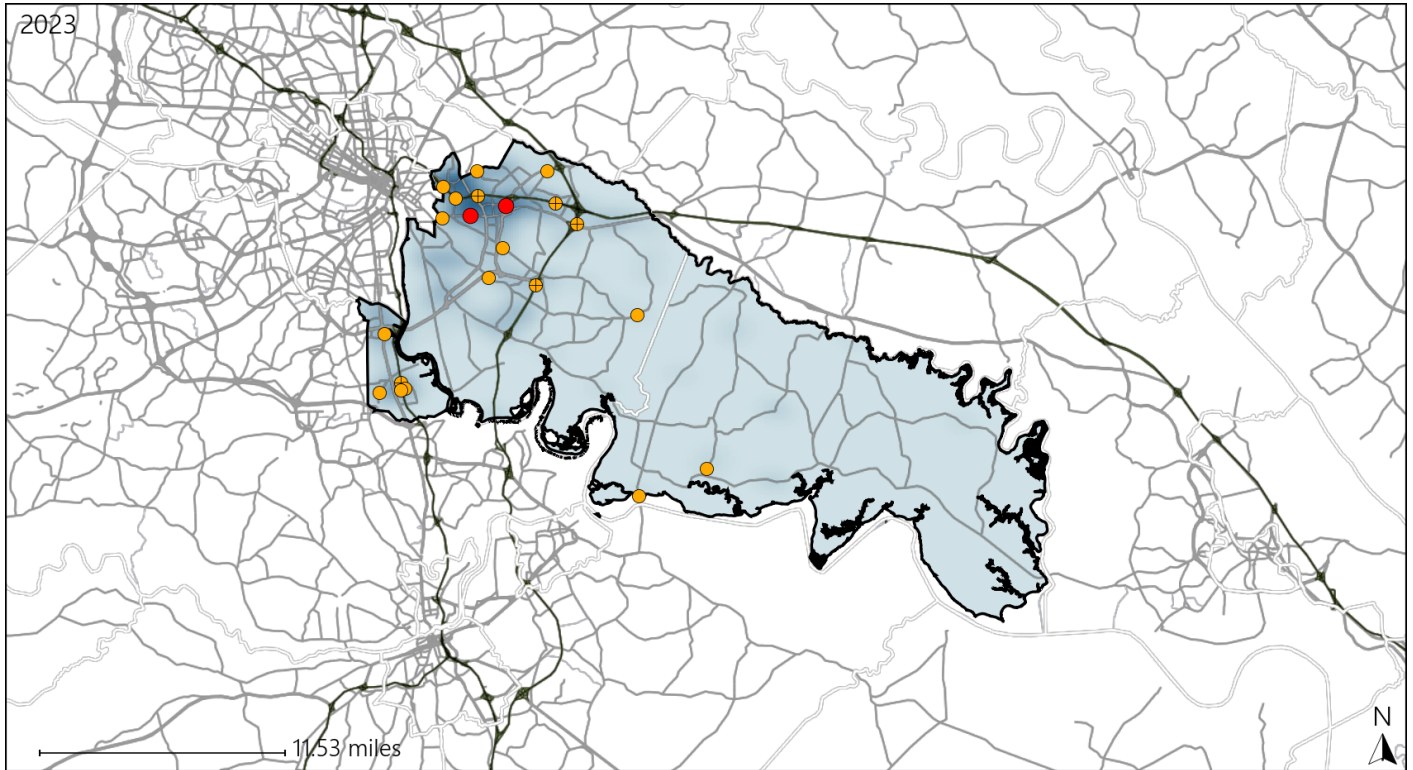


Available Crash Data - Calendar Year (CY)	CY 2020	CY 2021	CY 2022	CY 2023
Total Crashes	1686	1889	1935	1771
Fatal Crashes	18	15	19	11
Injury Crashes	499	493	493	514
Pedestrian-Related Fatal Crashes	3	4	3	1
Percent of Pedestrian-Related Fatal Crashes to Total Fatal Crashes	17%	27%	16%	9%
Pedestrian-Related Injury Crashes	18	21	17	25
Percent of Pedestrian-Related Injury Crashes to Total Injury Crashes	4%	4%	3%	5%

Virginia House District 81 Distracted Driving Crash Statistics

Report Generated May, 2024

	Count	Highest Time Period(s)	Highest Day(s)	Highest Month(s)
Fatal Crashes	2	9:00pm - 11:59pm	Monday • Thursday	August • January
Resulting Fatalities	2	Midnight - 2:59am (100%)	(100%)	(100%)
Serious Injury Crashes	19	9:00pm - 11:59pm (26%)	Monday • Saturday (42%)	October (21%)



House District 81 Distracted Driving-Related Crashes

- | | |
|--------------------|------------------------|
| Interstate Crashes | Non-interstate Crashes |
| ● Fatal | ● Fatal |
| ● Serious Injury | ● Serious Injury |

The blue gradient represents the density of all distracted driving-related crashes.



Available Crash Data - Calendar Year (CY)	CY 2020	CY 2021	CY 2022	CY 2023
Total Crashes	1686	1889	1935	1771
Fatal Crashes	18	15	19	11
Injury Crashes	499	493	493	514
Distracted Driving-Related Fatal Crashes	1	1	2	2
Percent of Distracted Driving-Related Fatal Crashes to Total Fatal Crashes	6%	7%	11%	18%
Distracted Driving-Related Injury Crashes	88	72	64	70
Percent of Distracted Driving-Related Injury Crashes to Total Injury Crashes	18%	15%	13%	14%