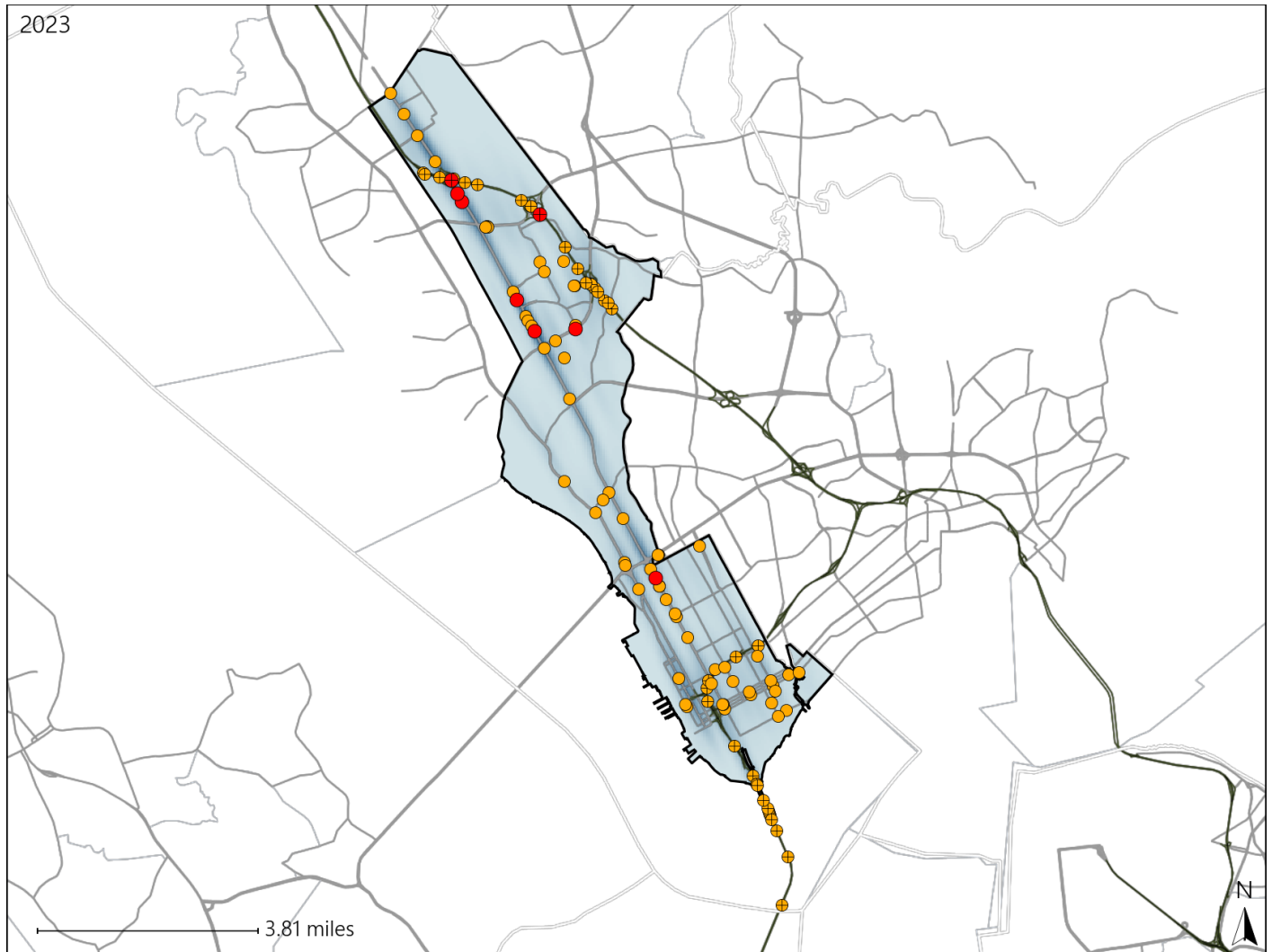


# Virginia House District 85 Crash Statistics

Report Generated May, 2024

	Count	Highest Time Period(s)	Highest Day(s)	Highest Month(s)
<b>Fatal Crashes</b>	<b>8</b>	<b>Midnight - 2:59am</b>	<b>Sunday</b>	<b>February</b>
<b>Resulting Fatalities</b>	<b>8</b>	(38%)	(38%)	(25%)
<b>Serious Injury Crashes</b>	<b>100</b>	<b>3:00pm - 5:59pm</b> <b>6:00pm - 8:59pm</b>	<b>Thursday</b>	<b>October</b>
		(34%)	(18%)	(13%)



### House District 85 Crashes

Interstate Crashes

- Fatal
- ⊕ Serious Injury

Non-interstate Crashes

- Fatal
- Serious Injury

The blue gradient represents the density of all crashes.

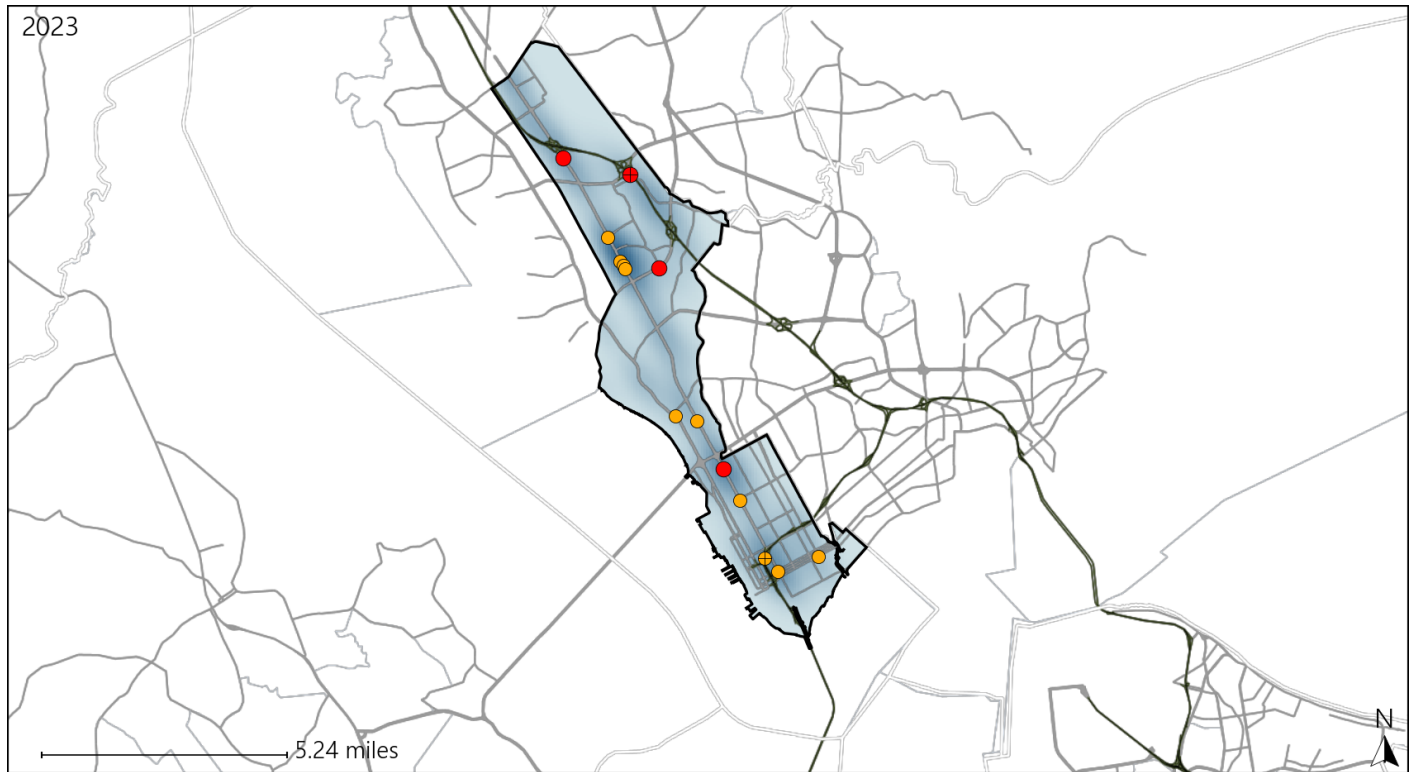


Available Crash Data - Calendar Year (CY)	CY 2020	CY 2021	CY 2022	CY 2023
Total Crashes	2117	2410	2336	2591
Fatal Crashes	16	9	11	8
Injury Crashes	874	899	665	734

# Virginia House District 85 Alcohol Crash Statistics

Report Generated May, 2024

	Count	Highest Time Period(s)	Highest Day(s)	Highest Month(s)
<b>Fatal Crashes</b>	<b>4</b>	<b>Midnight - 2:59am</b>	<b>Sunday</b>	<b>August • February</b>
<b>Resulting Fatalities</b>	<b>4</b>	(50%)	(50%)	(50%)
<b>Serious Injury Crashes</b>	<b>10</b>	<b>6:00pm - 8:59pm</b> <b>9:00pm - 11:59pm</b>	<b>Sunday • Thursday</b>	<b>December • October</b>
		(80%)	(40%)	(40%)



## House District 85 Alcohol-Related Crashes

Interstate Crashes                      Non-interstate Crashes  
 ● Fatal                                      ● Fatal  
 ⊕ Serious Injury                          ⊕ Serious Injury

The blue gradient represents the density of all alcohol-related crashes.

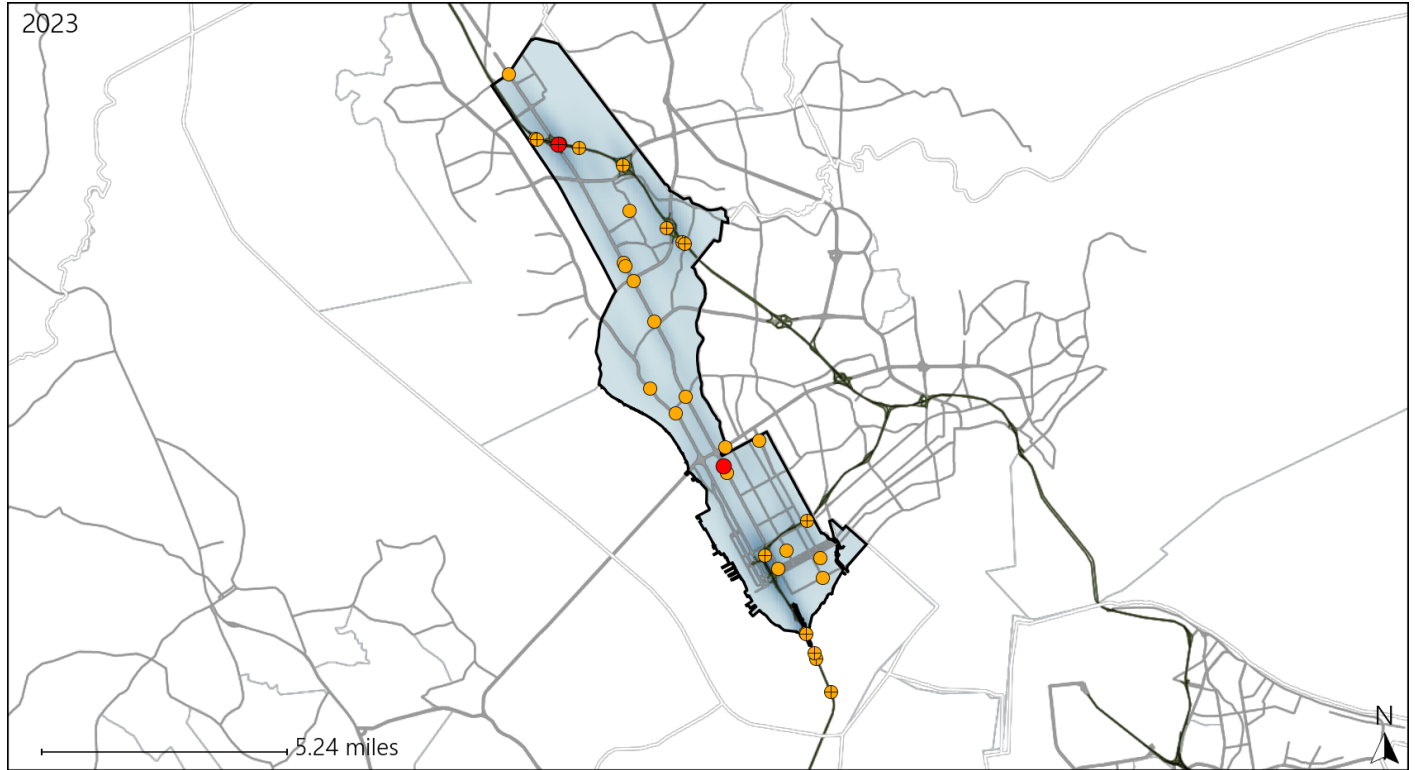


Available Crash Data - Calendar Year (CY)	CY 2020	CY 2021	CY 2022	CY 2023
Total Crashes	2117	2410	2336	2591
Fatal Crashes	16	9	11	8
Injury Crashes	874	899	665	734
Alcohol-Related Fatal Crashes	8	3	6	4
Percent of Alcohol-Related Fatal Crashes to Total Fatal Crashes	50%	33%	55%	50%
Alcohol-Related Injury Crashes	56	85	36	43
Percent of Alcohol-Related Injury Crashes to Total Injury Crashes	6%	9%	5%	6%

# Virginia House District 85 Speed Crash Statistics

Report Generated May, 2024

	Count	Highest Time Period(s)	Highest Day(s)	Highest Month(s)
<b>Fatal Crashes</b>	<b>2</b>	<b>Midnight - 2:59am</b>	<b>Saturday • Sunday</b>	<b>January • June</b>
<b>Resulting Fatalities</b>	<b>2</b>	(100%)	(100%)	(100%)
<b>Serious Injury Crashes</b>	<b>31</b>	<b>6:00pm - 8:59pm</b>	<b>Tuesday</b>	<b>November</b>
		(19%)	(23%)	(16%)



## House District 85 Speed-Related Crashes

Interstate Crashes                      Non-interstate Crashes  
 ● Fatal                                      ● Fatal  
 ⊕ Serious Injury                          ⊕ Serious Injury

The blue gradient represents the density of all speed-related crashes.

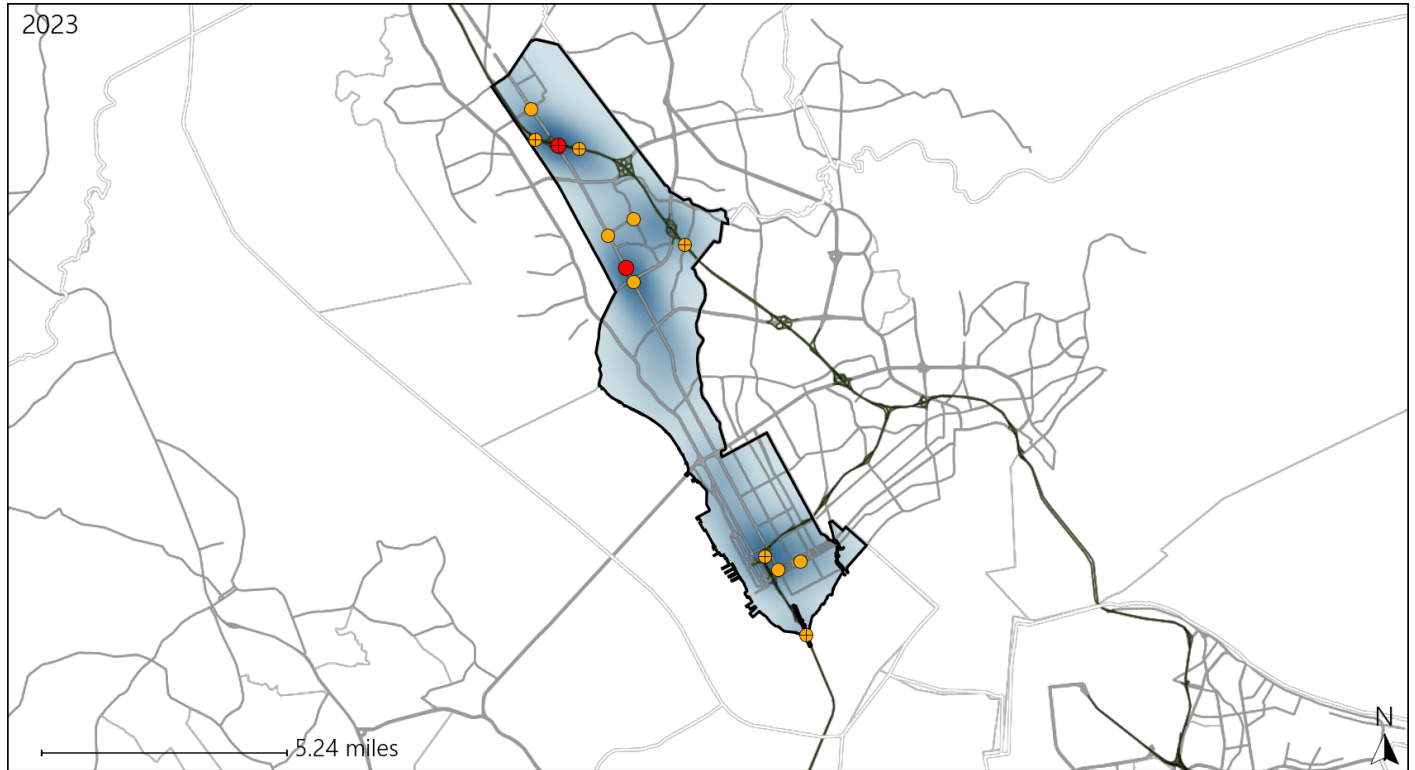


Available Crash Data - Calendar Year (CY)	CY 2020	CY 2021	CY 2022	CY 2023
<b>Total Crashes</b>	<b>2117</b>	<b>2410</b>	<b>2336</b>	<b>2591</b>
<b>Fatal Crashes</b>	<b>16</b>	<b>9</b>	<b>11</b>	<b>8</b>
<b>Injury Crashes</b>	<b>874</b>	<b>899</b>	<b>665</b>	<b>734</b>
<b>Speed-Related Fatal Crashes</b>	<b>8</b>	<b>4</b>	<b>6</b>	<b>2</b>
<b>Percent of Speed-Related Fatal Crashes to Total Fatal Crashes</b>	<b>50%</b>	<b>44%</b>	<b>55%</b>	<b>25%</b>
<b>Speed-Related Injury Crashes</b>	<b>168</b>	<b>161</b>	<b>148</b>	<b>127</b>
<b>Percent of Speed-Related Injury Crashes to Total Injury Crashes</b>	<b>19%</b>	<b>18%</b>	<b>22%</b>	<b>17%</b>

# Virginia House District 85 Unrestrained Crash Statistics

Report Generated May, 2024

	Count	Highest Time Period(s)	Highest Day(s)	Highest Month(s)
<b>Fatal Crashes</b>	<b>2</b>	Midnight - 2:59am	Friday • Sunday	January • March
<b>Unrestrained Fatalities</b>	<b>2</b>	Noon - 2:59pm (100%)	(100%)	(100%)
<b>Serious Injury Crashes</b>	<b>11</b>	9:00pm - 11:59pm (55%)	Wednesday (36%)	January (27%)



## House District 85 Unrestrained-Related Crashes

Interstate Crashes

- Fatal
- Serious Injury

Non-interstate Crashes

- Fatal
- Serious Injury

The blue gradient represents the density of all unrestrained-related crashes.

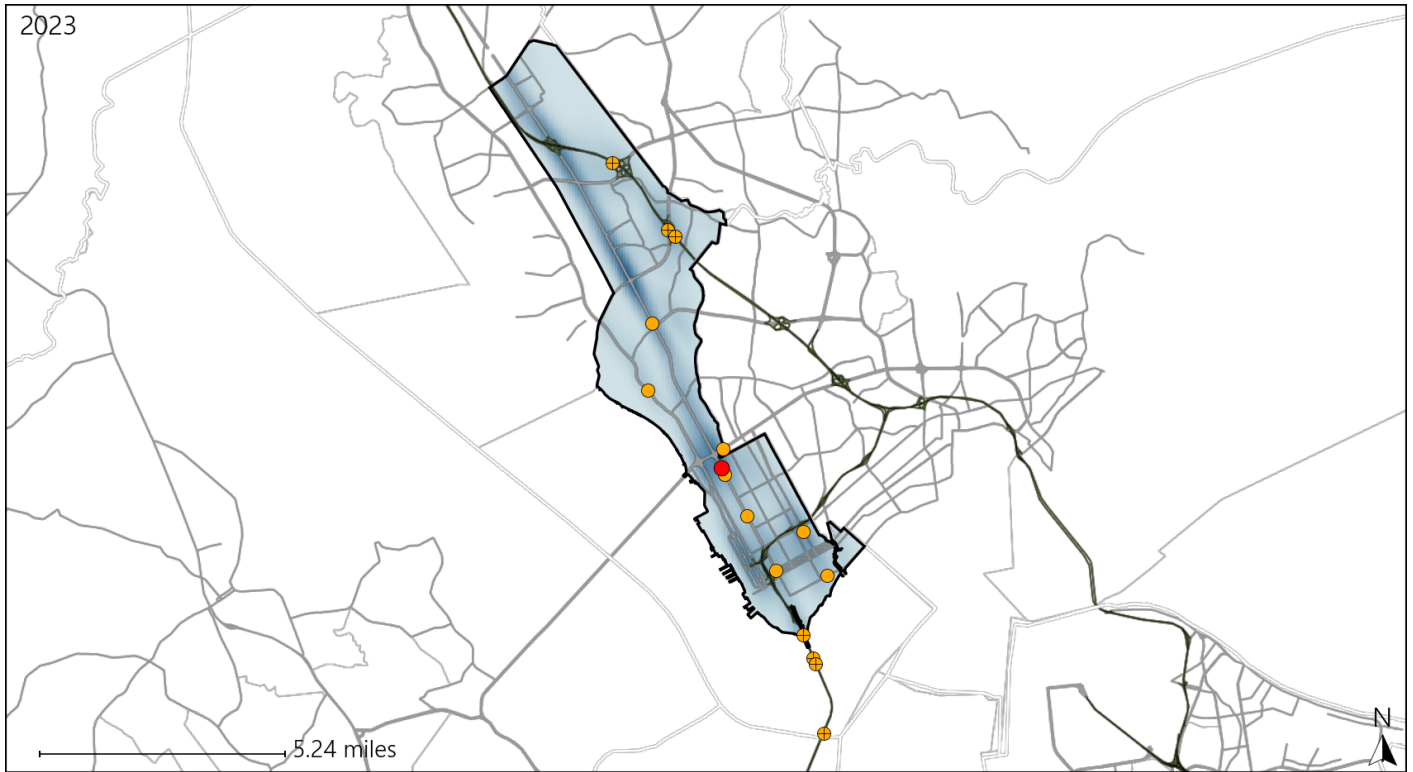


Available Crash Data - Calendar Year (CY)	CY 2020	CY 2021	CY 2022	CY 2023
<b>Total Crashes</b>	2117	2410	2336	2591
<b>Fatalities</b>	17	9	11	8
<b>Injuries</b>	1246	1317	1085	1187
<b>Unrestrained Fatalities</b>	7	1	4	2
<b>Percent of Unrestrained Fatalities to Total Fatalities</b>	41%	11%	36%	25%
<b>Unrestrained Injuries</b>	45	73	42	56
<b>Percent of Unrestrained Injuries to Total Injuries</b>	4%	6%	4%	5%


# Virginia House District 85 Distracted Driving Crash Statistics

Report Generated May, 2024

	Count	Highest Time Period(s)	Highest Day(s)	Highest Month(s)
<b>Fatal Crashes</b>	<b>1</b>	<b>Midnight - 2:59am</b>	<b>Saturday</b>	<b>June</b>
<b>Resulting Fatalities</b>	<b>1</b>	(100%)	(100%)	(100%)
<b>Serious Injury Crashes</b>	<b>15</b>	<b>3:00pm - 5:59pm</b>	<b>Saturday</b>	<b>November • September</b>
		(27%)	(27%)	(40%)



## House District 85 Distracted Driving-Related Crashes

- |  |  |
|--|--|
| Interstate Crashes   | Non-interstate Crashes   |
|  Fatal          |  Fatal          |
|  Serious Injury |  Serious Injury |

The blue gradient represents the density of all distracted driving-related crashes.



Available Crash Data - Calendar Year (CY)	CY 2020	CY 2021	CY 2022	CY 2023
<b>Total Crashes</b>	<b>2117</b>	<b>2410</b>	<b>2336</b>	<b>2591</b>
<b>Fatal Crashes</b>	<b>16</b>	<b>9</b>	<b>11</b>	<b>8</b>
<b>Injury Crashes</b>	<b>874</b>	<b>899</b>	<b>665</b>	<b>734</b>
<b>Distracted Driving-Related Fatal Crashes</b>	<b>1</b>	<b>1</b>	<b>1</b>	<b>1</b>
<b>Percent of Distracted Driving-Related Fatal Crashes to Total Fatal Crashes</b>	<b>6%</b>	<b>11%</b>	<b>9%</b>	<b>13%</b>
<b>Distracted Driving-Related Injury Crashes</b>	<b>194</b>	<b>238</b>	<b>123</b>	<b>147</b>
<b>Percent of Distracted Driving-Related Injury Crashes to Total Injury Crashes</b>	<b>22%</b>	<b>26%</b>	<b>18%</b>	<b>20%</b>