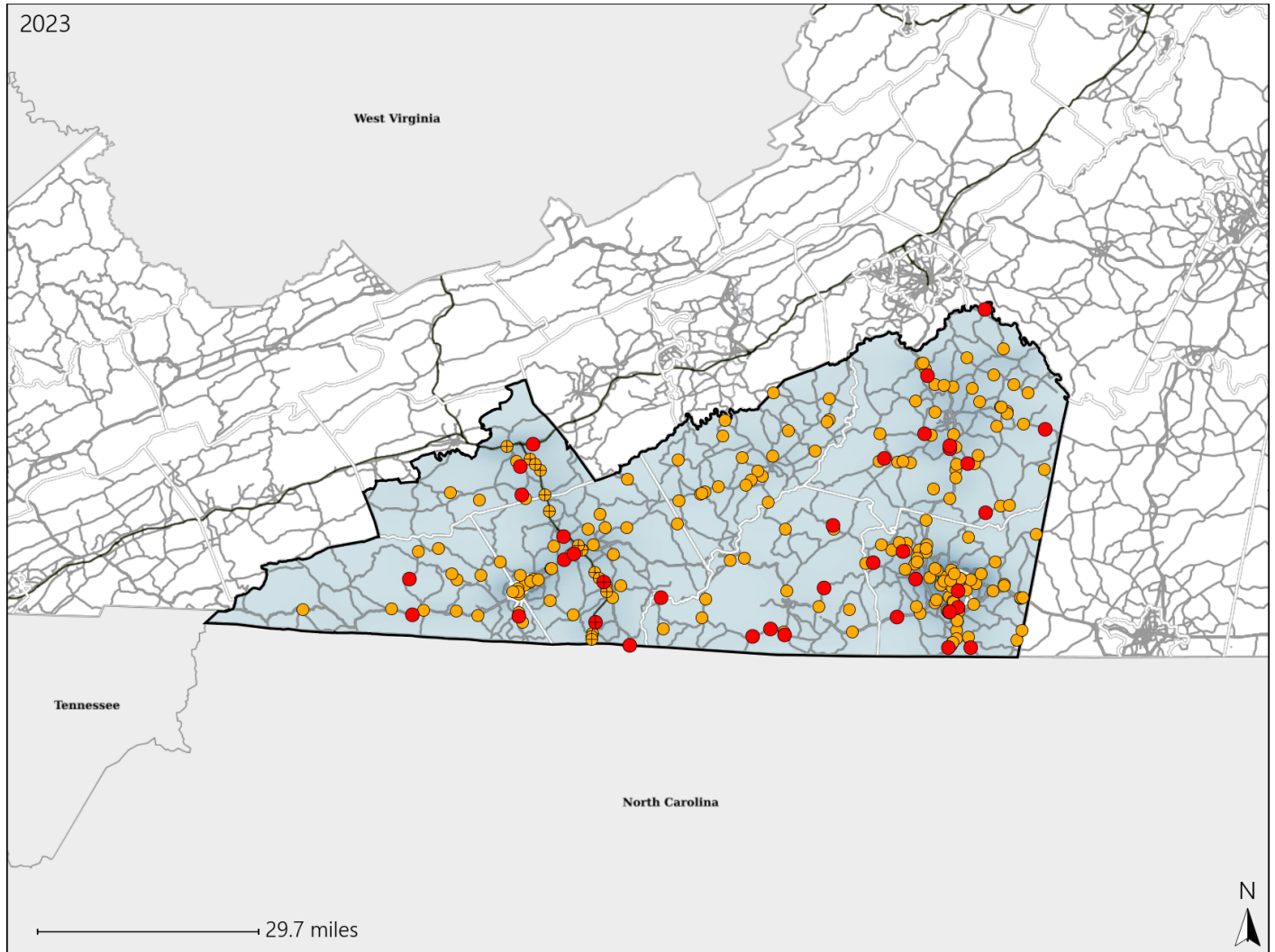


Virginia Senate District 7 Crash Statistics

Report Generated May, 2024

	Count	Highest Time Period(s)	Highest Day(s)	Highest Month(s)
Fatal Crashes	37	Noon - 2:59pm	Friday • Saturday	May
Resulting Fatalities	40	(30%)	(32%)	(19%)
Serious Injury Crashes	206	3:00pm - 5:59pm	Saturday	November
		(23%)	(19%)	(12%)



Senate District 7 Crashes

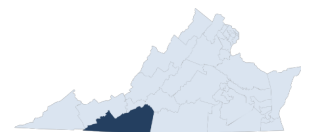
Interstate Crashes

- Fatal
- Serious Injury

Non-interstate Crashes

- Fatal
- Serious Injury

The blue gradient represents the density of all crashes.

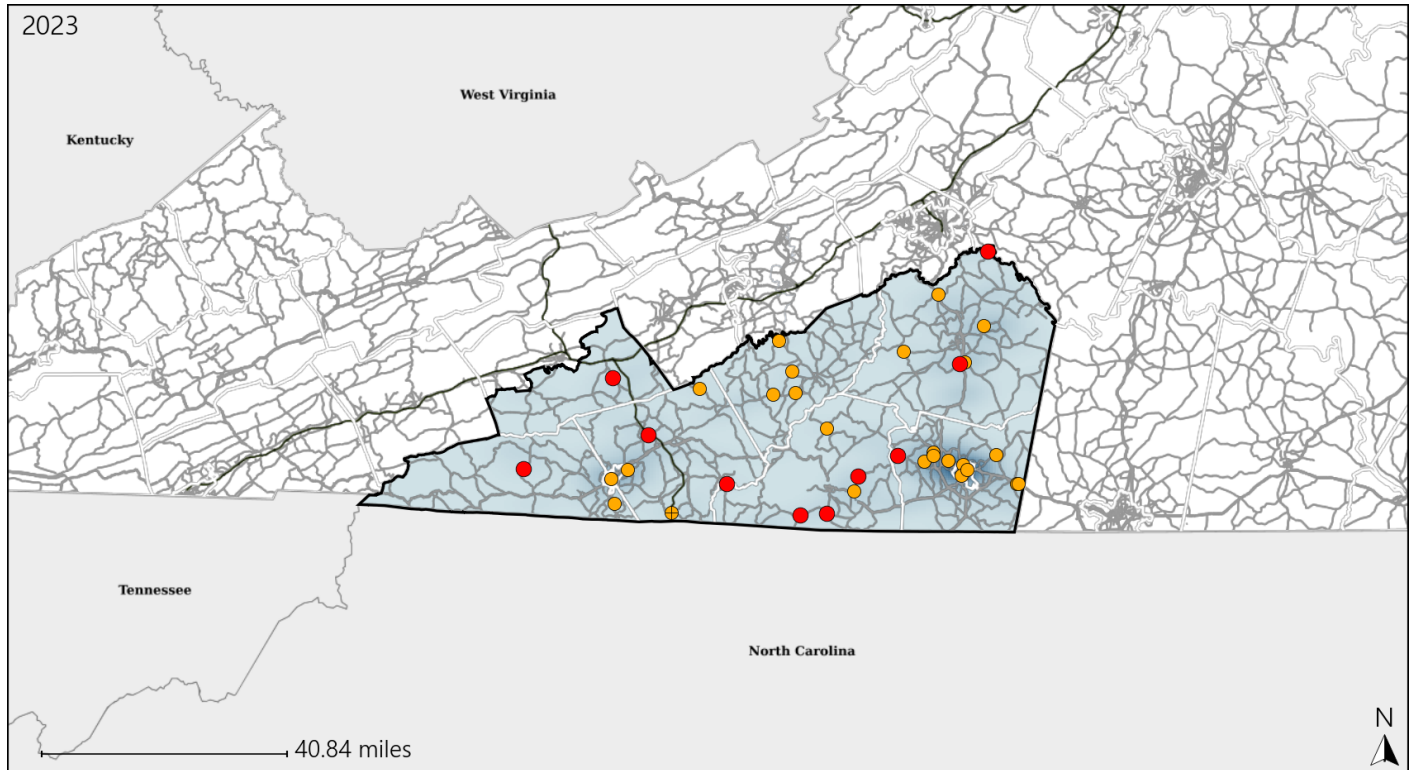


Available Crash Data - Calendar Year (CY)	CY 2020	CY 2021	CY 2022	CY 2023
Total Crashes	3169	3319	3356	3363
Fatal Crashes	38	34	52	37
Injury Crashes	915	861	900	878

Virginia Senate District 7 Alcohol Crash Statistics

Report Generated May, 2024

	Count	Highest Time Period(s)	Highest Day(s)	Highest Month(s)
Fatal Crashes	10	6:00pm - 8:59pm	Saturday	October
Resulting Fatalities	11	(40%)	(30%)	(30%)
Serious Injury Crashes	26	6:00pm - 8:59pm	Saturday	November
		(38%)	(46%)	(23%)



Senate District 7 Alcohol-Related Crashes

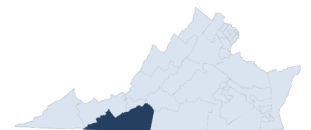
Interstate Crashes

Non-interstate Crashes

- Fatal
- Serious Injury

- Fatal
- Serious Injury

The blue gradient represents the density of all alcohol-related crashes.

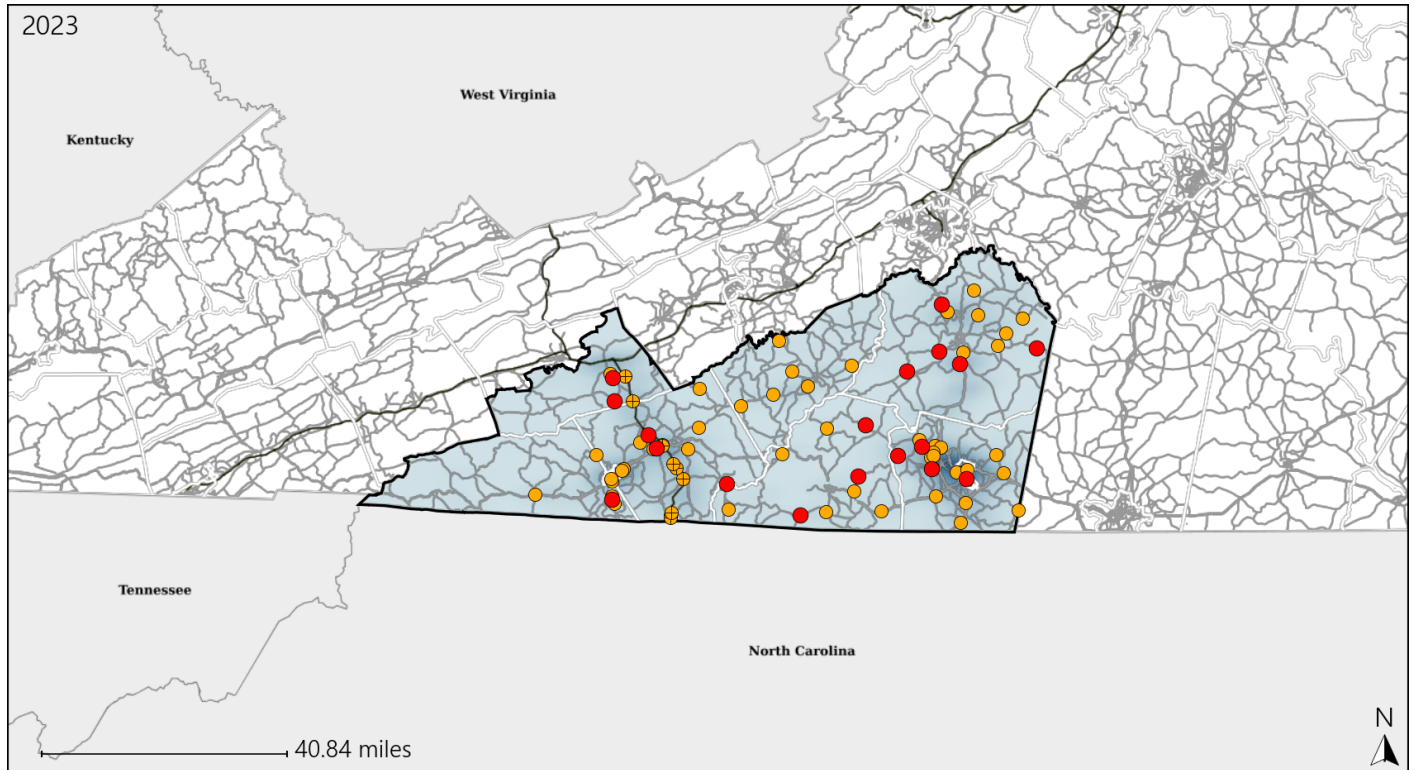


Available Crash Data - Calendar Year (CY)	CY 2020	CY 2021	CY 2022	CY 2023
Total Crashes	3169	3319	3356	3363
Fatal Crashes	38	34	52	37
Injury Crashes	915	861	900	878
Alcohol-Related Fatal Crashes	13	8	11	10
Percent of Alcohol-Related Fatal Crashes to Total Fatal Crashes	34%	24%	21%	27%
Alcohol-Related Injury Crashes	88	67	74	71
Percent of Alcohol-Related Injury Crashes to Total Injury Crashes	10%	8%	8%	8%

Virginia Senate District 7 Speed Crash Statistics

Report Generated May, 2024

	Count	Highest Time Period(s)	Highest Day(s)	Highest Month(s)
Fatal Crashes	18	Noon - 2:59pm	Thursday	May
Resulting Fatalities	21	(33%)	(22%)	(28%)
Serious Injury Crashes	61	Noon - 2:59pm	Saturday	November
		(20%)	(26%)	(15%)



Senate District 7 Speed-Related Crashes

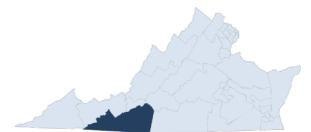
Interstate Crashes

Non-interstate Crashes

- Fatal
- Serious Injury

- Fatal
- Serious Injury

The blue gradient represents the density of all speed-related crashes.

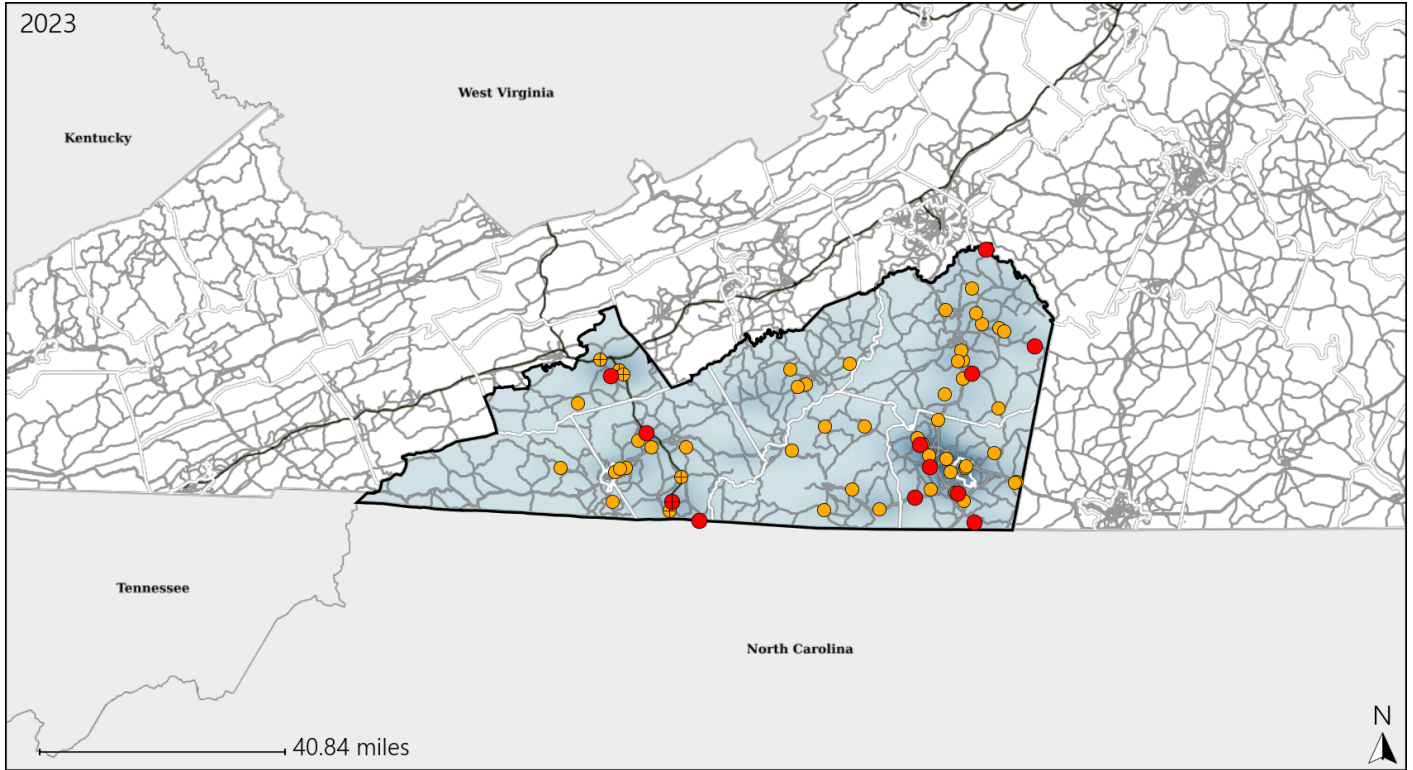


Available Crash Data - Calendar Year (CY)	CY 2020	CY 2021	CY 2022	CY 2023
Total Crashes	3169	3319	3356	3363
Fatal Crashes	38	34	52	37
Injury Crashes	915	861	900	878
Speed-Related Fatal Crashes	20	18	25	18
Percent of Speed-Related Fatal Crashes to Total Fatal Crashes	53%	53%	48%	49%
Speed-Related Injury Crashes	266	220	246	245
Percent of Speed-Related Injury Crashes to Total Injury Crashes	29%	26%	27%	28%

Virginia Senate District 7 Unrestrained Crash Statistics

Report Generated May, 2024

	Count	Highest Time Period(s)	Highest Day(s)	Highest Month(s)
Fatal Crashes	12	6:00pm - 8:59pm	Sunday	March + May
Unrestrained Fatalities	13	(25%)	(33%)	(34%)
Serious Injury Crashes	50	6:00pm - 8:59pm	Saturday	September
		(22%)	(30%)	(20%)



Senate District 7 Unrestrained-Related Crashes

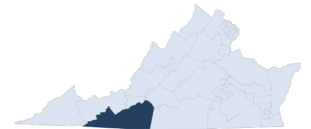
Interstate Crashes

- Fatal
- Serious Injury

Non-interstate Crashes

- Fatal
- Serious Injury

The blue gradient represents the density of all unrestrained-related crashes.

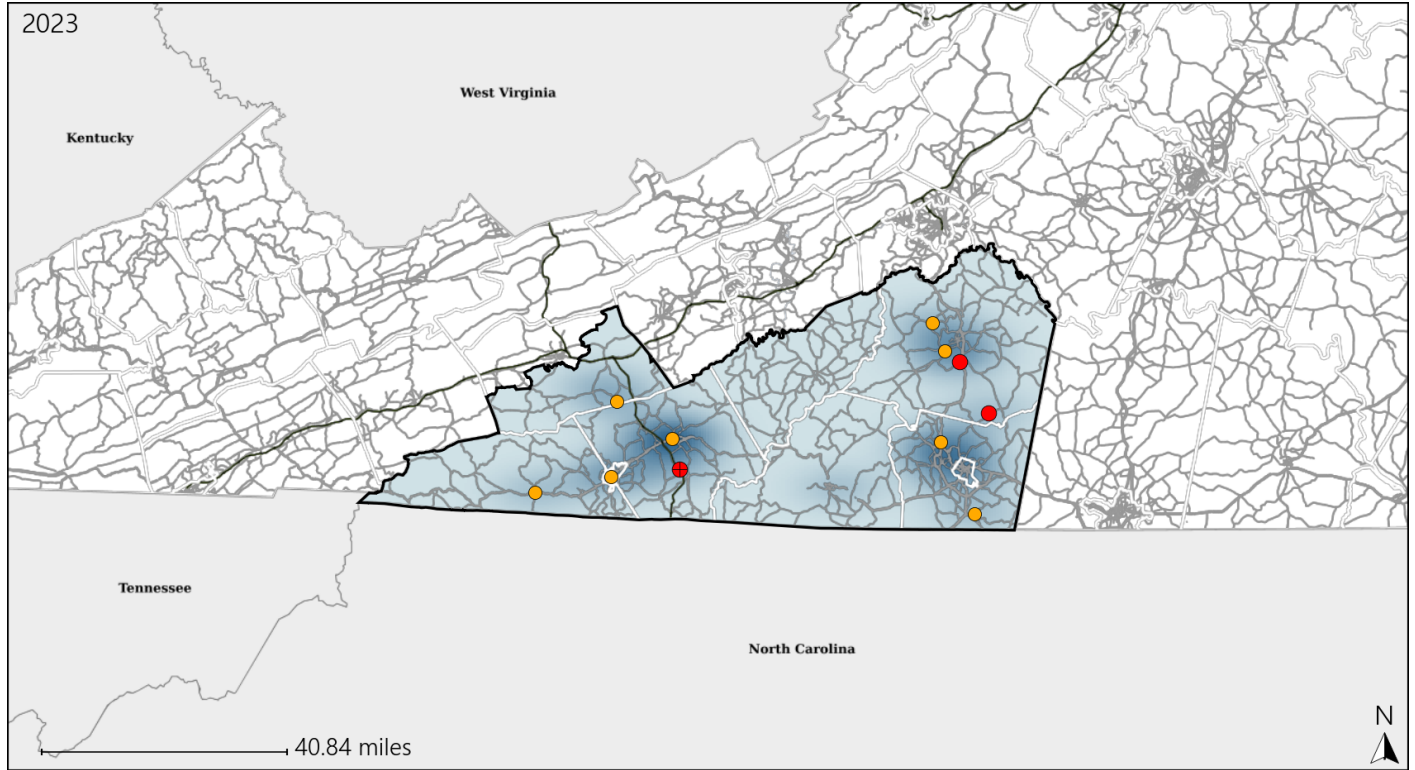


Available Crash Data - Calendar Year (CY)	CY 2020	CY 2021	CY 2022	CY 2023
Total Crashes	3169	3319	3356	3363
Fatalities	40	39	56	40
Injuries	1264	1182	1296	1269
Unrestrained Fatalities	22	18	28	13
Percent of Unrestrained Fatalities to Total Fatalities	55%	46%	50%	33%
Unrestrained Injuries	145	136	147	135
Percent of Unrestrained Injuries to Total Injuries	11%	12%	11%	11%

Virginia Senate District 7 Pedestrian Crash Statistics

Report Generated May, 2024

	Count	Highest Time Period(s)	Highest Day(s)	Highest Month(s)
Fatal Crashes	3	Noon - 2:59pm	Monday • Saturday	July • October
Pedestrian Fatalities	4	(67%)	(66%)	(66%)
Serious Injury Crashes	8	6:00am - 8:59am	Friday • Saturday	December • July
		(38%)	(76%)	(50%)



Senate District 7 Pedestrian-Related Crashes

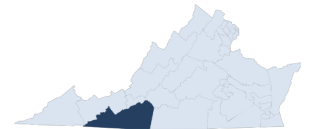
Interstate Crashes

- Fatal
- Serious Injury

Non-interstate Crashes

- Fatal
- Serious Injury

The blue gradient represents the density of all pedestrian-related crashes.

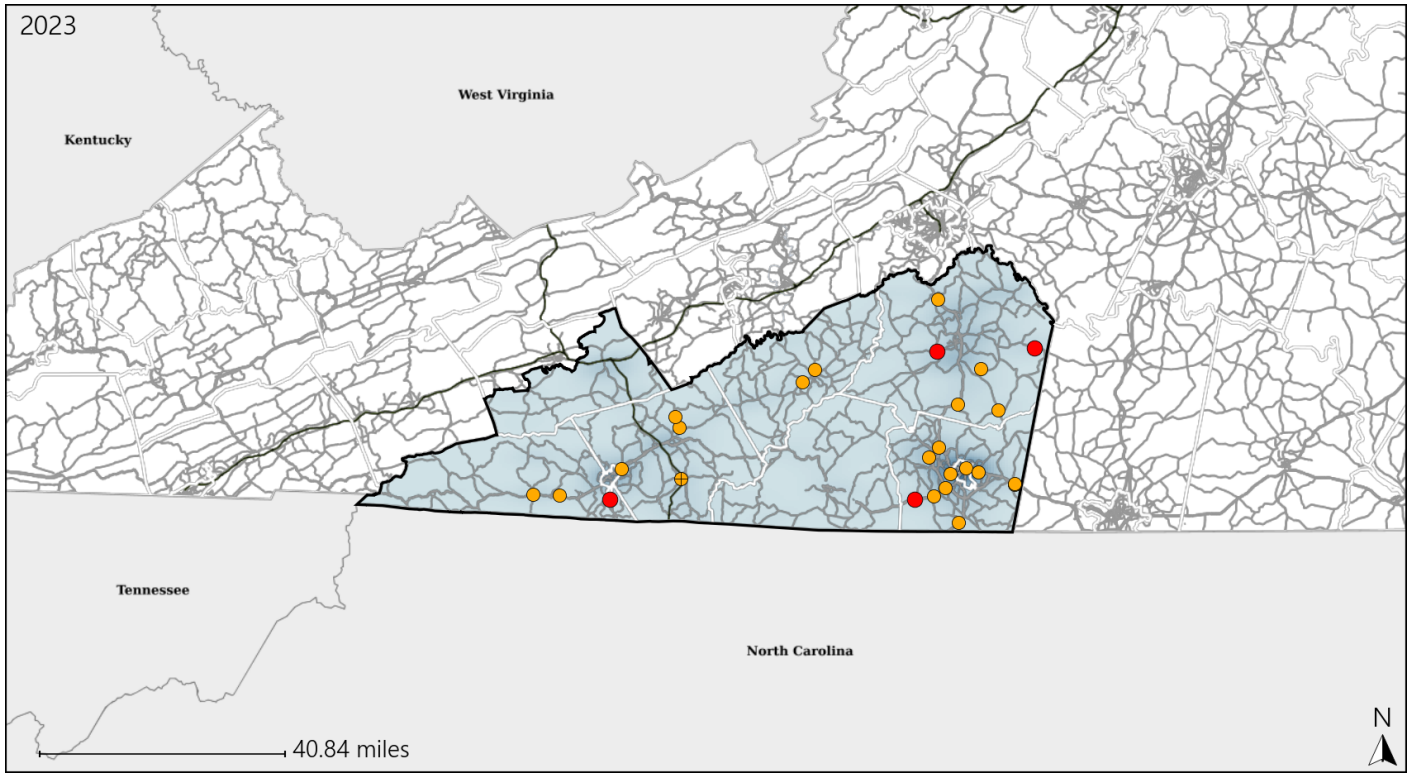


Available Crash Data - Calendar Year (CY)	CY 2020	CY 2021	CY 2022	CY 2023
Total Crashes	3169	3319	3356	3363
Fatal Crashes	38	34	52	37
Injury Crashes	915	861	900	878
Pedestrian-Related Fatal Crashes	2	0	3	3
Percent of Pedestrian-Related Fatal Crashes to Total Fatal Crashes	5%	0%	6%	8%
Pedestrian-Related Injury Crashes	14	14	15	19
Percent of Pedestrian-Related Injury Crashes to Total Injury Crashes	2%	2%	2%	2%

Virginia Senate District 7 Distracted Driving Crash Statistics

Report Generated May, 2024

	Count	Highest Time Period(s)	Highest Day(s)	Highest Month(s)
Fatal Crashes	4	3:00pm - 5:59pm	Monday	June
Resulting Fatalities	5	6:00am - 8:59am (50%)	(50%)	(50%)
Serious Injury Crashes	23	6:00am - 8:59am 9:00am - 11:59am (34%)	Thursday (26%)	November (22%)



Senate District 7 Distracted Driving-Related Crashes

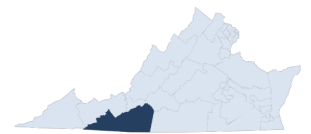
Interstate Crashes

- Fatal
- Serious Injury

Non-interstate Crashes

- Fatal
- Serious Injury

The blue gradient represents the density of all distracted driving-related crashes.



Available Crash Data - Calendar Year (CY)	CY 2020	CY 2021	CY 2022	CY 2023
Total Crashes	3169	3319	3356	3363
Fatal Crashes	38	34	52	37
Injury Crashes	915	861	900	878
Distracted Driving-Related Fatal Crashes	5	3	6	4
Percent of Distracted Driving-Related Fatal Crashes to Total Fatal Crashes	13%	9%	12%	11%
Distracted Driving-Related Injury Crashes	152	131	154	131
Percent of Distracted Driving-Related Injury Crashes to Total Injury Crashes	17%	15%	17%	15%