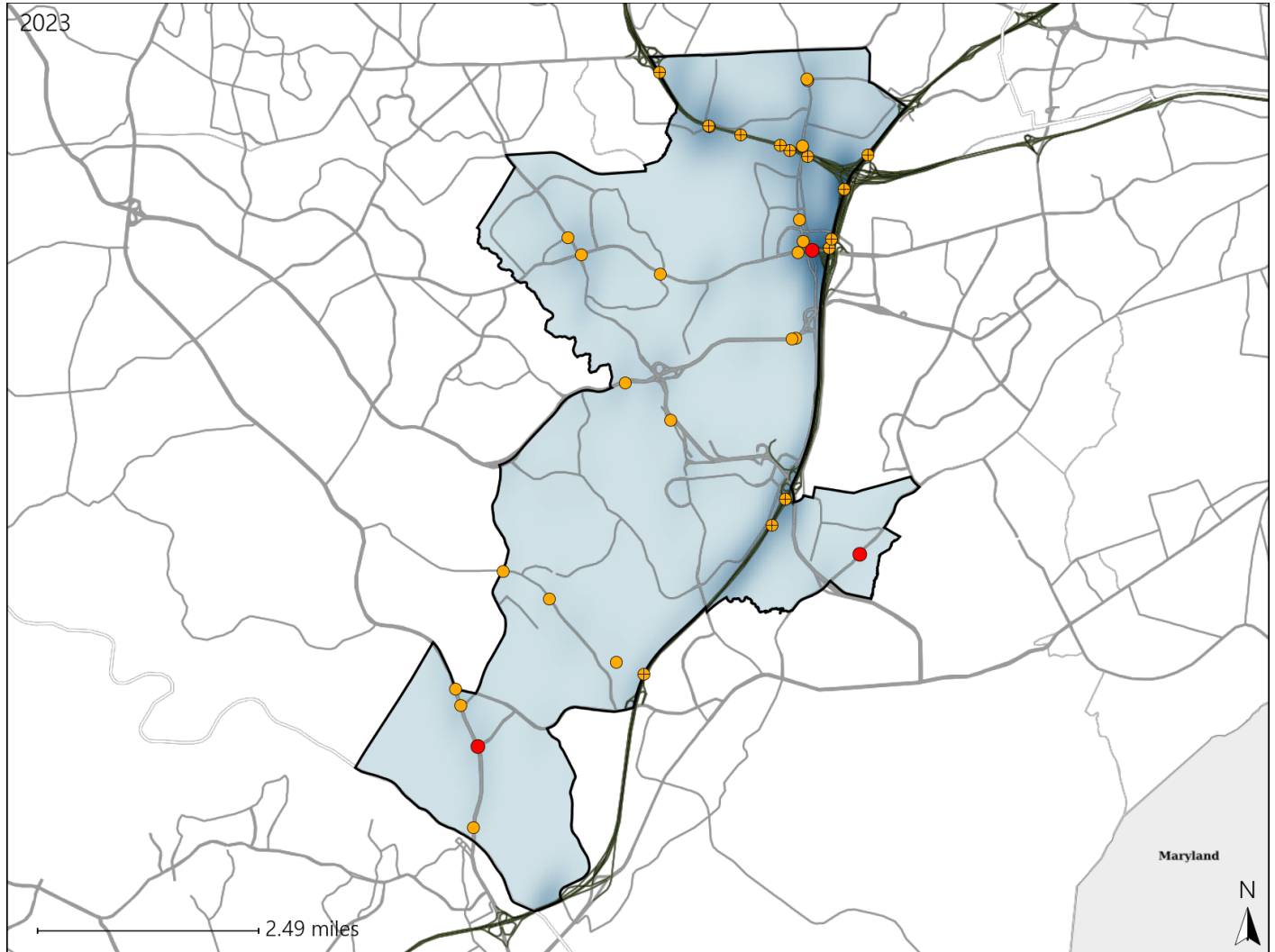


Virginia House District 18 Crash Statistics

Report Generated May, 2024

	Count	Highest Time Period(s)	Highest Day(s)	Highest Month(s)
Fatal Crashes	3	6:00pm - 8:59pm	Saturday • Sunday	November • October
Resulting Fatalities	3	9:00am - 11:59am (66%)	(66%)	(66%)
Serious Injury Crashes	34	Noon - 2:59pm (29%)	Friday (29%)	January (21%)



House District 18 Crashes

Interstate Crashes

- Fatal
- Serious Injury

Non-interstate Crashes

- Fatal
- Serious Injury

The blue gradient represents the density of all crashes.

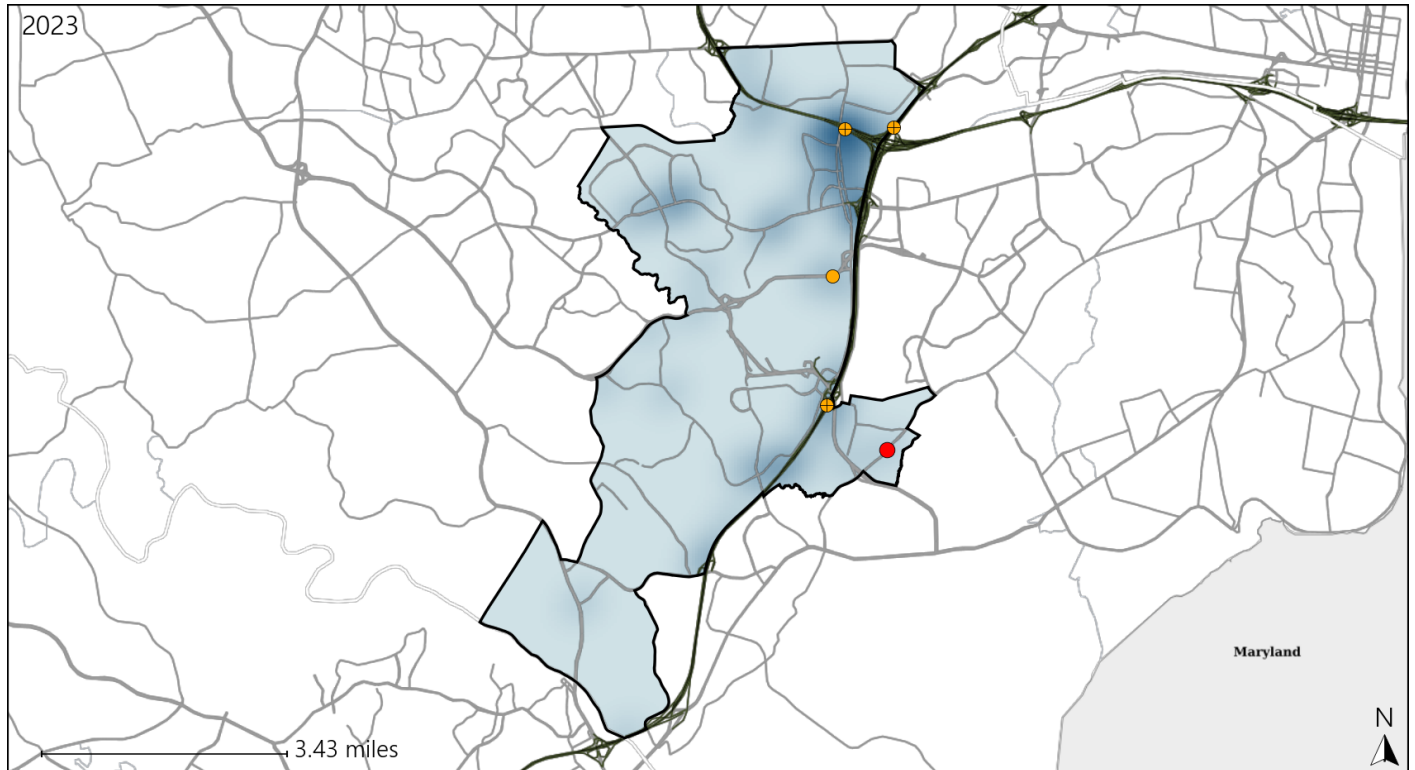


Available Crash Data - Calendar Year (CY)	CY 2020	CY 2021	CY 2022	CY 2023
Total Crashes	813	939	1109	1199
Fatal Crashes	5	4	5	3
Injury Crashes	192	279	293	347





Virginia House District 18 Alcohol Crash Statistics

Report Generated May, 2024

	Count	Highest Time Period(s)	Highest Day(s)	Highest Month(s)
Fatal Crashes	1	6:00pm - 8:59pm	Tuesday	October
Resulting Fatalities	1	(100%)	(100%)	(100%)
Serious Injury Crashes	4	Midnight - 2:59am	Friday	June
		(50%)	(50%)	(50%)



House District 18 Alcohol-Related Crashes

Interstate Crashes Non-interstate Crashes
 Fatal  Fatal
 Serious Injury  Serious Injury

The blue gradient represents the density of all alcohol-related crashes.

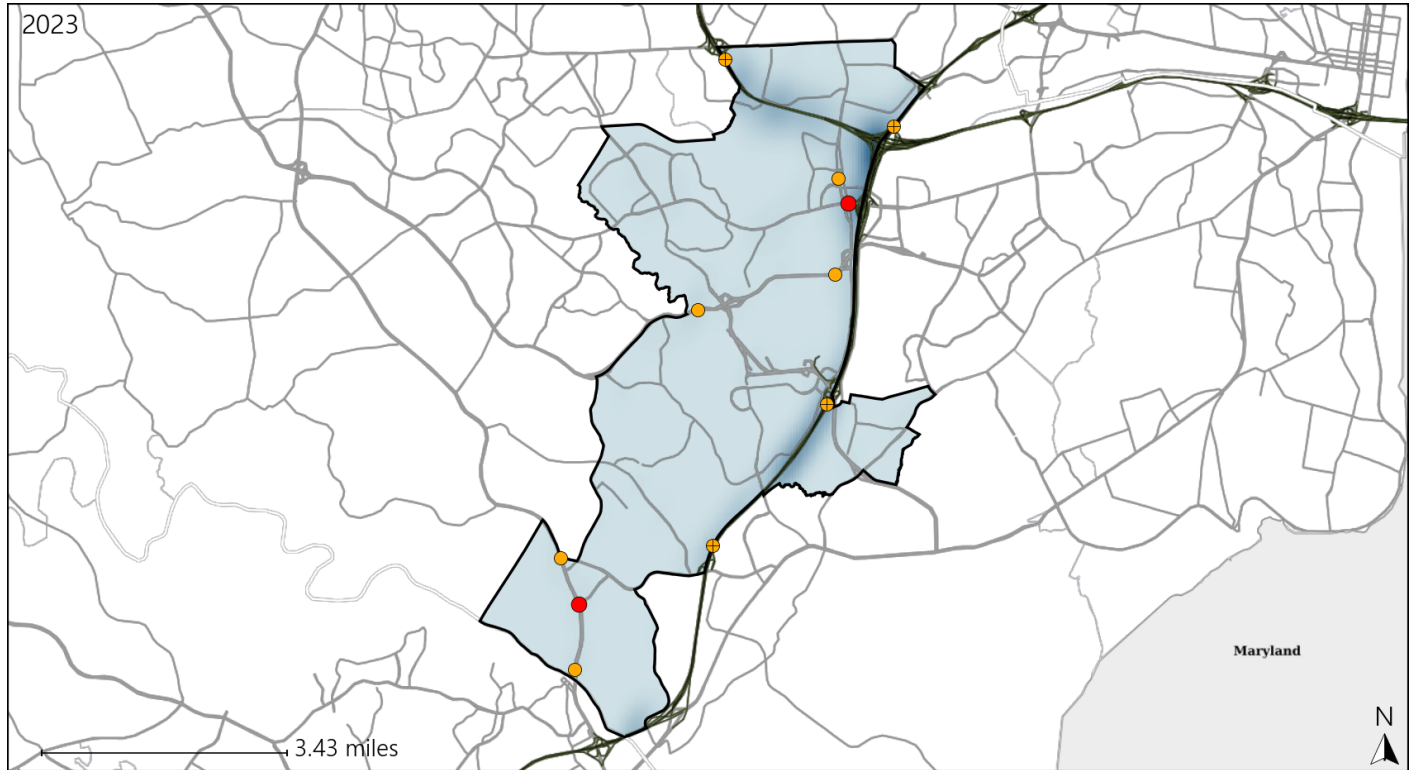


Available Crash Data - Calendar Year (CY)	CY 2020	CY 2021	CY 2022	CY 2023
Total Crashes	813	939	1109	1199
Fatal Crashes	5	4	5	3
Injury Crashes	192	279	293	347
Alcohol-Related Fatal Crashes	1	0	4	1
Percent of Alcohol-Related Fatal Crashes to Total Fatal Crashes	20%	0%	80%	33%
Alcohol-Related Injury Crashes	8	18	18	25
Percent of Alcohol-Related Injury Crashes to Total Injury Crashes	4%	6%	6%	7%

Virginia House District 18 Speed Crash Statistics

Report Generated May, 2024

	Count	Highest Time Period(s)	Highest Day(s)	Highest Month(s)
Fatal Crashes	2	9:00am - 11:59am	Saturday • Sunday	November • September
Resulting Fatalities	2	Midnight - 2:59am (100%)	(100%)	(100%)
Serious Injury Crashes	9	Midnight - 2:59am (33%)	Friday (44%)	April (33%)



House District 18 Speed-Related Crashes

- | | |
|------------------------------------------------------|------------------------------------------------------|
| Interstate Crashes | Non-interstate Crashes |
| ● Fatal | ● Fatal |
| ● Serious Injury | ● Serious Injury |

The blue gradient represents the density of all speed-related crashes.

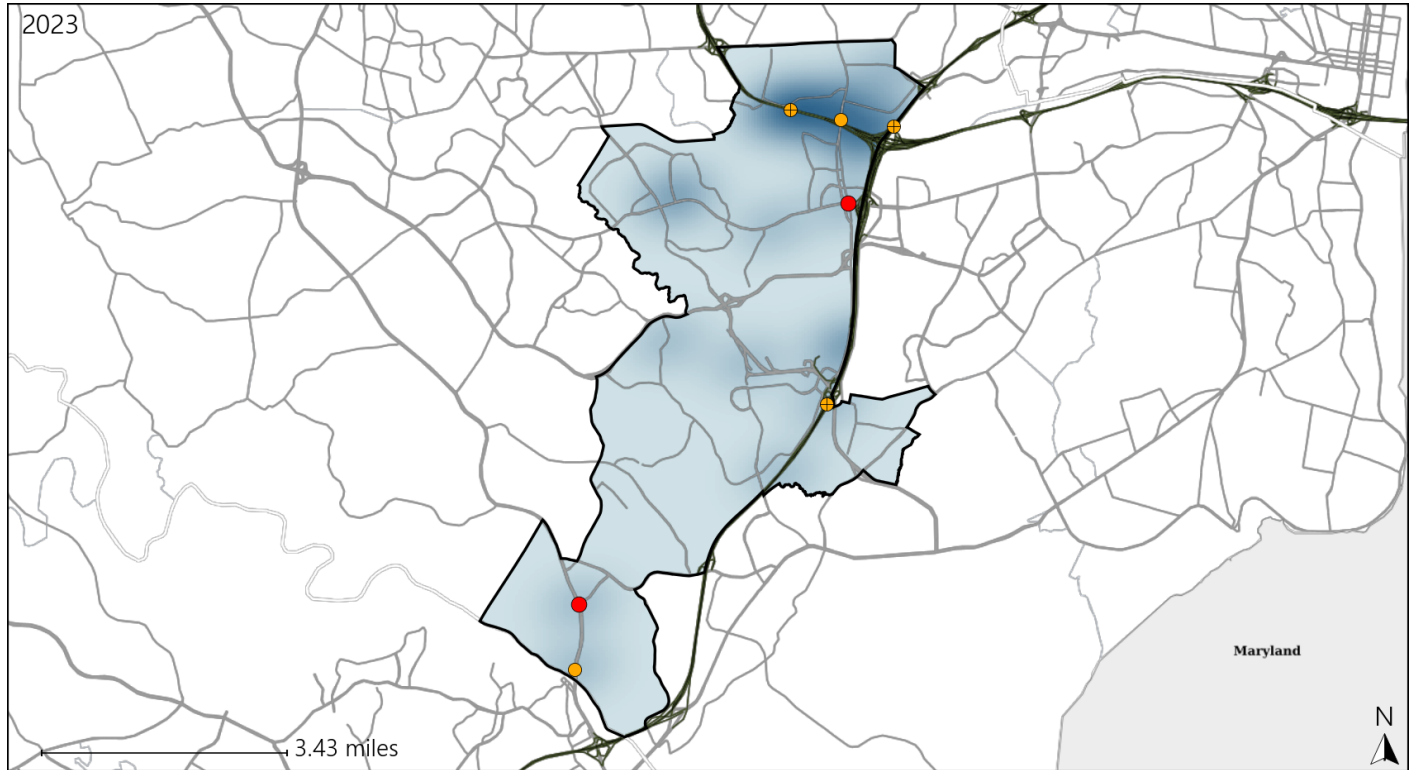


Available Crash Data - Calendar Year (CY)	CY 2020	CY 2021	CY 2022	CY 2023
Total Crashes	813	939	1109	1199
Fatal Crashes	5	4	5	3
Injury Crashes	192	279	293	347
Speed-Related Fatal Crashes	3	3	4	2
Percent of Speed-Related Fatal Crashes to Total Fatal Crashes	60%	75%	80%	67%
Speed-Related Injury Crashes	69	94	102	103
Percent of Speed-Related Injury Crashes to Total Injury Crashes	36%	34%	35%	30%

Virginia House District 18 Unrestrained Crash Statistics

Report Generated May, 2024

	Count	Highest Time Period(s)	Highest Day(s)	Highest Month(s)
Fatal Crashes	2	9:00am - 11:59am	Saturday • Sunday	November • September
Unrestrained Fatalities	2	Midnight - 2:59am (100%)	(100%)	(100%)
Serious Injury Crashes	5	9:00am - 11:59am (40%)	Friday (40%)	April (40%)



House District 18 Unrestrained-Related Crashes

Interstate Crashes

- Fatal
- Serious Injury

Non-interstate Crashes

- Fatal
- Serious Injury

The blue gradient represents the density of all unrestrained-related crashes.

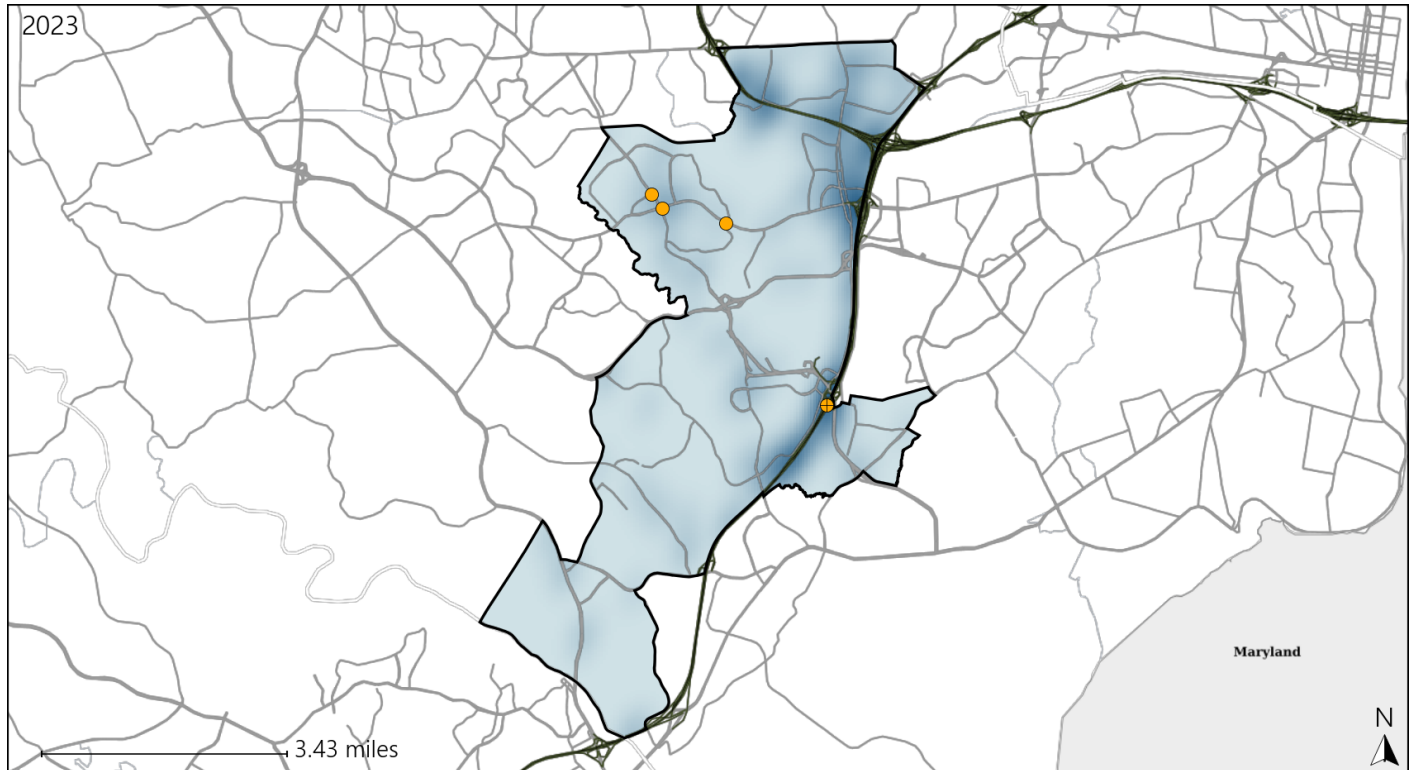


Available Crash Data - Calendar Year (CY)	CY 2020	CY 2021	CY 2022	CY 2023
Total Crashes	813	939	1109	1199
Fatalities	5	4	5	3
Injuries	286	419	450	540
Unrestrained Fatalities	0	2	2	2
Percent of Unrestrained Fatalities to Total Fatalities	0%	50%	40%	67%
Unrestrained Injuries	17	13	18	20
Percent of Unrestrained Injuries to Total Injuries	6%	3%	4%	4%

Virginia House District 18 Distracted Driving Crash Statistics

Report Generated May, 2024

	Count	Highest Time Period(s)	Highest Day(s)	Highest Month(s)
Fatal Crashes	0	-	-	-
Resulting Fatalities	0	-	-	-
Serious Injury Crashes	4	Noon - 2:59pm (75%)	Friday (50%)	April • June (50%)



House District 18 Distracted Driving-Related Crashes

- | | |
|--------------------|------------------------|
| Interstate Crashes | Non-interstate Crashes |
| Fatal | Fatal |
| Serious Injury | Serious Injury |

The blue gradient represents the density of all distracted driving-related crashes.



Available Crash Data - Calendar Year (CY)	CY 2020	CY 2021	CY 2022	CY 2023
Total Crashes	813	939	1109	1199
Fatal Crashes	5	4	5	3
Injury Crashes	192	279	293	347
Distracted Driving-Related Fatal Crashes	1	1	1	0
Percent of Distracted Driving-Related Fatal Crashes to Total Fatal Crashes	20%	25%	20%	0%
Distracted Driving-Related Injury Crashes	55	69	61	68
Percent of Distracted Driving-Related Injury Crashes to Total Injury Crashes	29%	25%	21%	20%