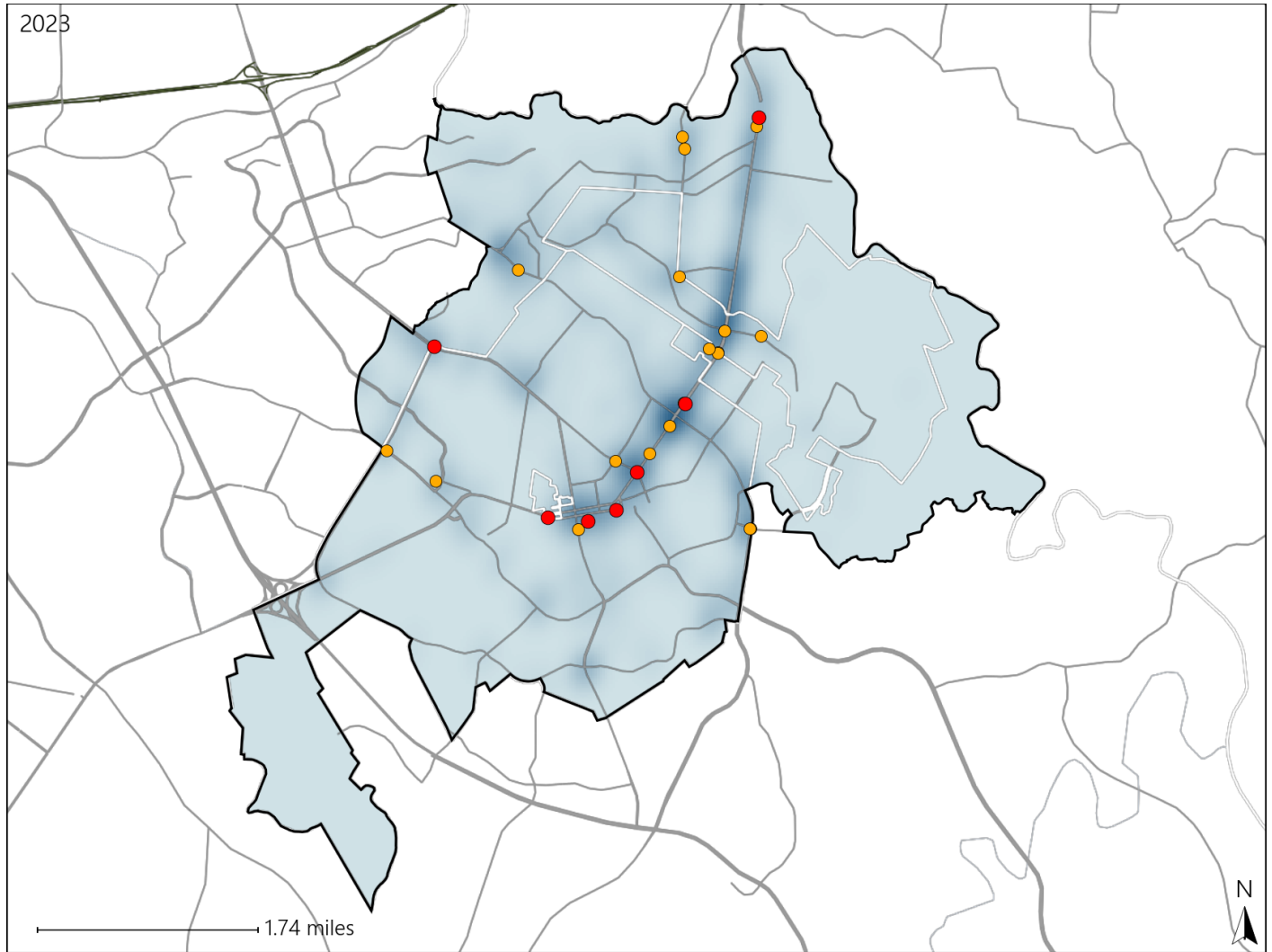


# Virginia House District 20 Crash Statistics

Report Generated May, 2024

	Count	Highest Time Period(s)	Highest Day(s)	Highest Month(s)
<b>Fatal Crashes</b>	<b>7</b>	<b>9:00pm - 11:59pm</b>	<b>Saturday</b>	<b>April • August</b>
<b>Resulting Fatalities</b>	<b>7</b>	(43%)	(43%)	(58%)
<b>Serious Injury Crashes</b>	<b>19</b>	<b>3:00pm - 5:59pm</b>	<b>Friday • Monday</b>	<b>August • December</b>
		(53%)	(42%)	(32%)



### House District 20 Crashes

Interstate Crashes

- Fatal
- Serious Injury

Non-interstate Crashes

- Fatal
- Serious Injury

The blue gradient represents the density of all crashes.

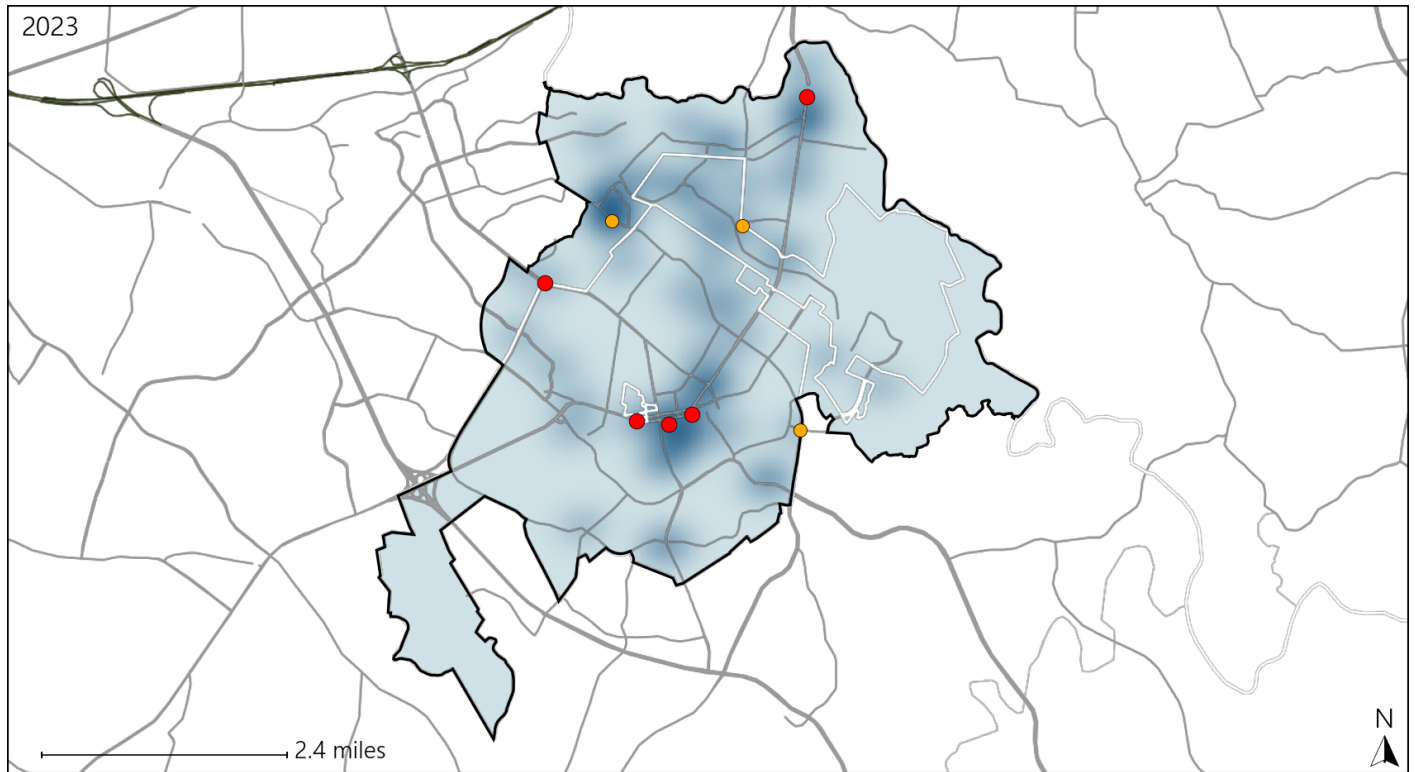


Available Crash Data - Calendar Year (CY)	CY 2020	CY 2021	CY 2022	CY 2023
<b>Total Crashes</b>	<b>662</b>	<b>668</b>	<b>753</b>	<b>841</b>
<b>Fatal Crashes</b>	<b>1</b>	<b>3</b>	<b>3</b>	<b>7</b>
<b>Injury Crashes</b>	<b>344</b>	<b>352</b>	<b>424</b>	<b>505</b>

# Virginia House District 20 Alcohol Crash Statistics

Report Generated May, 2024

	Count	Highest Time Period(s)	Highest Day(s)	Highest Month(s)
<b>Fatal Crashes</b>	<b>5</b>	<b>9:00pm - 11:59pm</b>	<b>Saturday</b>	<b>August</b>
<b>Resulting Fatalities</b>	<b>5</b>	<b>(60%)</b>	<b>(40%)</b>	<b>(40%)</b>
<b>Serious Injury Crashes</b>	<b>3</b>	<b>6:00pm - 8:59pm</b> <b>9:00pm - 11:59pm</b>	<b>Friday • Thursday</b>	<b>January • June</b>
		<b>(66%)</b>	<b>(66%)</b>	<b>(66%)</b>



### House District 20 Alcohol-Related Crashes

Interstate Crashes                      Non-interstate Crashes  
 ● Fatal                                      ● Fatal  
 ⊕ Serious Injury                          ⊕ Serious Injury

The blue gradient represents the density of all alcohol-related crashes.

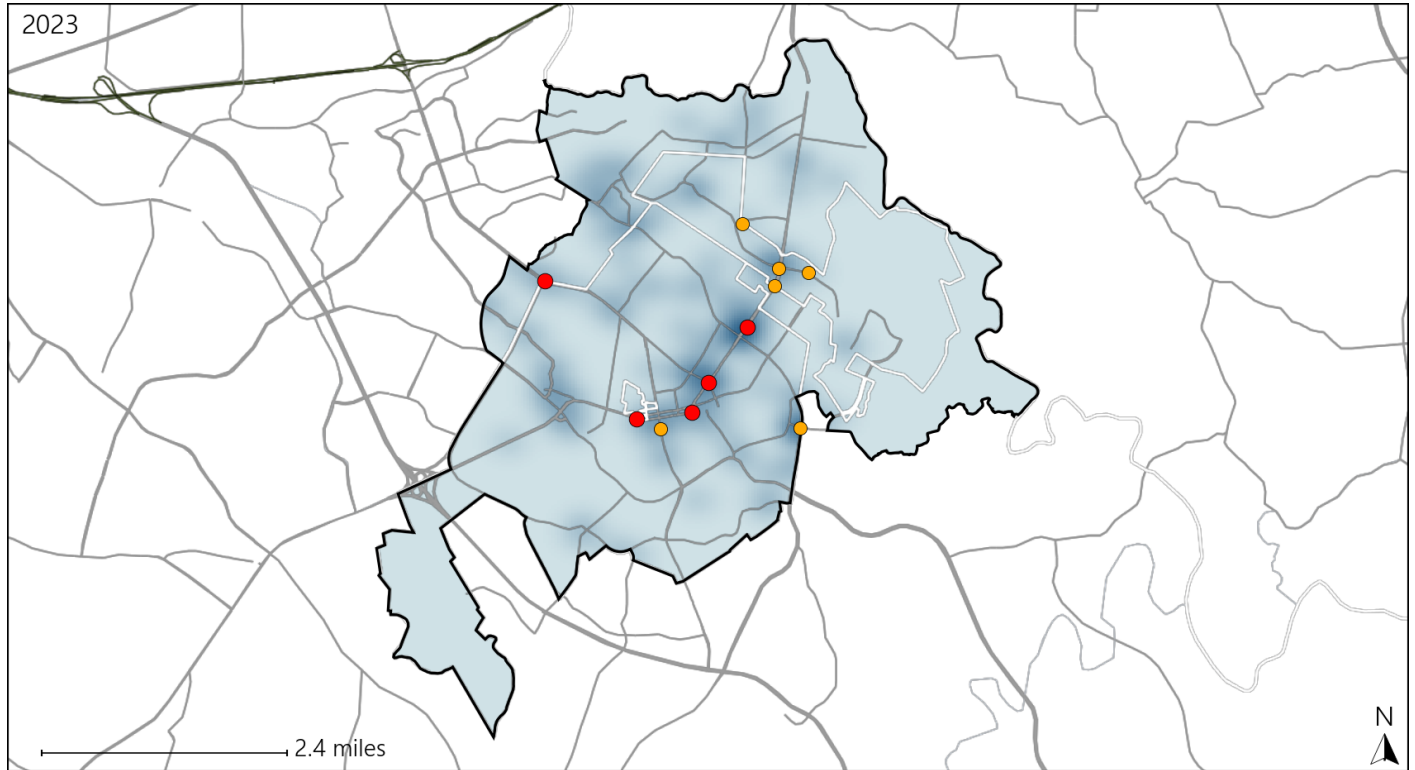


Available Crash Data - Calendar Year (CY)	CY 2020	CY 2021	CY 2022	CY 2023
Total Crashes	662	668	753	841
Fatal Crashes	1	3	3	7
Injury Crashes	344	352	424	505
Alcohol-Related Fatal Crashes	1	1	2	5
Percent of Alcohol-Related Fatal Crashes to Total Fatal Crashes	100%	33%	67%	71%
Alcohol-Related Injury Crashes	30	28	39	30
Percent of Alcohol-Related Injury Crashes to Total Injury Crashes	9%	8%	9%	6%

# Virginia House District 20 Speed Crash Statistics

Report Generated May, 2024

	Count	Highest Time Period(s)	Highest Day(s)	Highest Month(s)
<b>Fatal Crashes</b>	<b>5</b>	<b>3:00pm - 5:59pm</b>	<b>Saturday</b>	<b>April • August</b>
<b>Resulting Fatalities</b>	<b>5</b>	<b>6:00pm - 8:59pm</b> (40%)	<b>(60%)</b>	<b>(40%)</b>
<b>Serious Injury Crashes</b>	<b>6</b>	<b>3:00pm - 5:59pm</b> (33%)	<b>Friday • Tuesday</b> (66%)	<b>August</b> (33%)



### House District 20 Speed-Related Crashes

Interstate Crashes                      Non-interstate Crashes  
 ● Fatal                                      ● Fatal  
 ● Serious Injury                              ● Serious Injury

The blue gradient represents the density of all speed-related crashes.

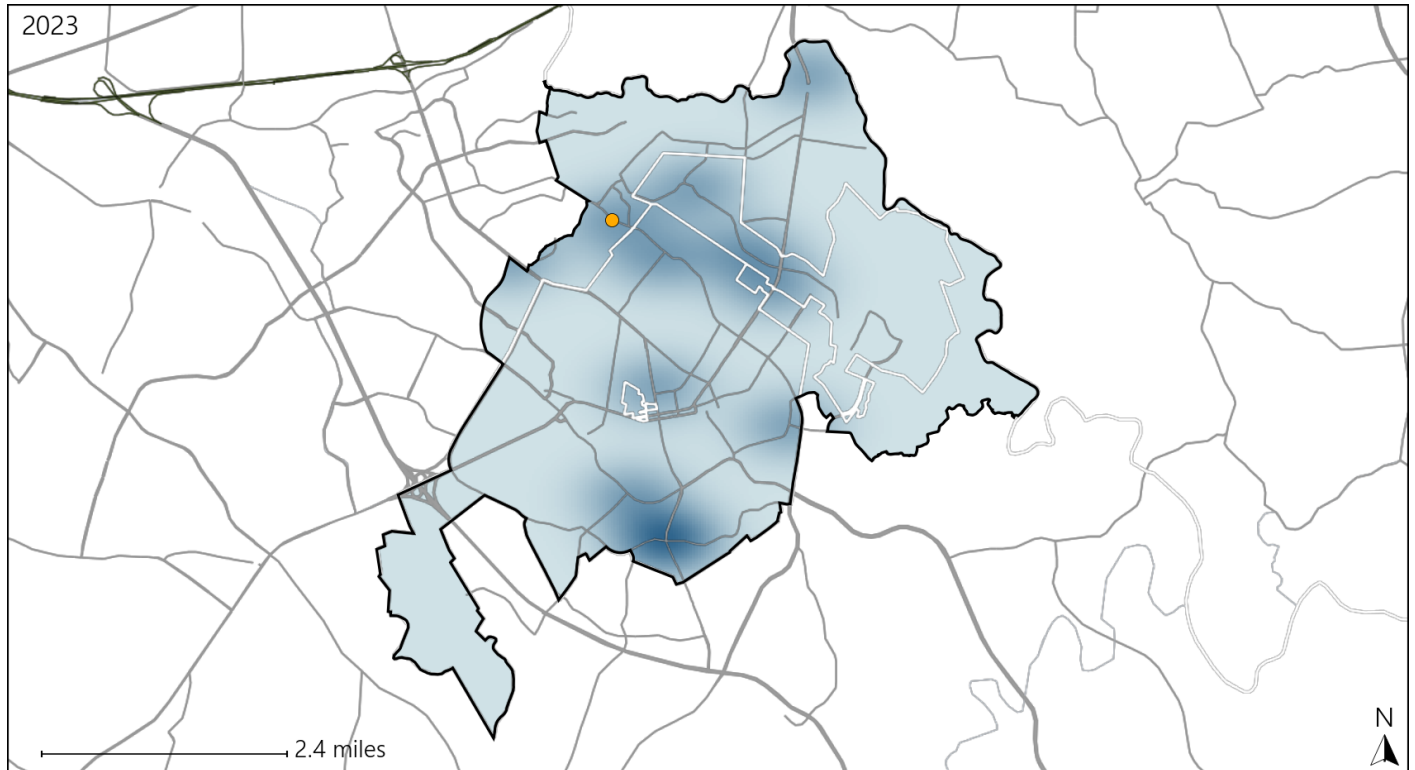


Available Crash Data - Calendar Year (CY)	CY 2020	CY 2021	CY 2022	CY 2023
Total Crashes	662	668	753	841
Fatal Crashes	1	3	3	7
Injury Crashes	344	352	424	505
Speed-Related Fatal Crashes	1	1	3	5
Percent of Speed-Related Fatal Crashes to Total Fatal Crashes	100%	33%	100%	71%
Speed-Related Injury Crashes	79	68	75	85
Percent of Speed-Related Injury Crashes to Total Injury Crashes	23%	19%	18%	17%

# Virginia House District 20 Unrestrained Crash Statistics

Report Generated May, 2024

	Count	Highest Time Period(s)	Highest Day(s)	Highest Month(s)
<b>Fatal Crashes</b>	<b>0</b>	-	-	-
<b>Unrestrained Fatalities</b>	<b>0</b>	-	-	-
<b>Serious Injury Crashes</b>	<b>1</b>	<b>Midnight - 2:59am (100%)</b>	<b>Thursday (100%)</b>	<b>January (100%)</b>



## House District 20 Unrestrained-Related Crashes

- |                    |                        |
|--------------------|------------------------|
| Interstate Crashes | Non-interstate Crashes |
| ● Fatal            | ● Fatal                |
| ● Serious Injury   | ● Serious Injury       |

The blue gradient represents the density of all unrestrained-related crashes.

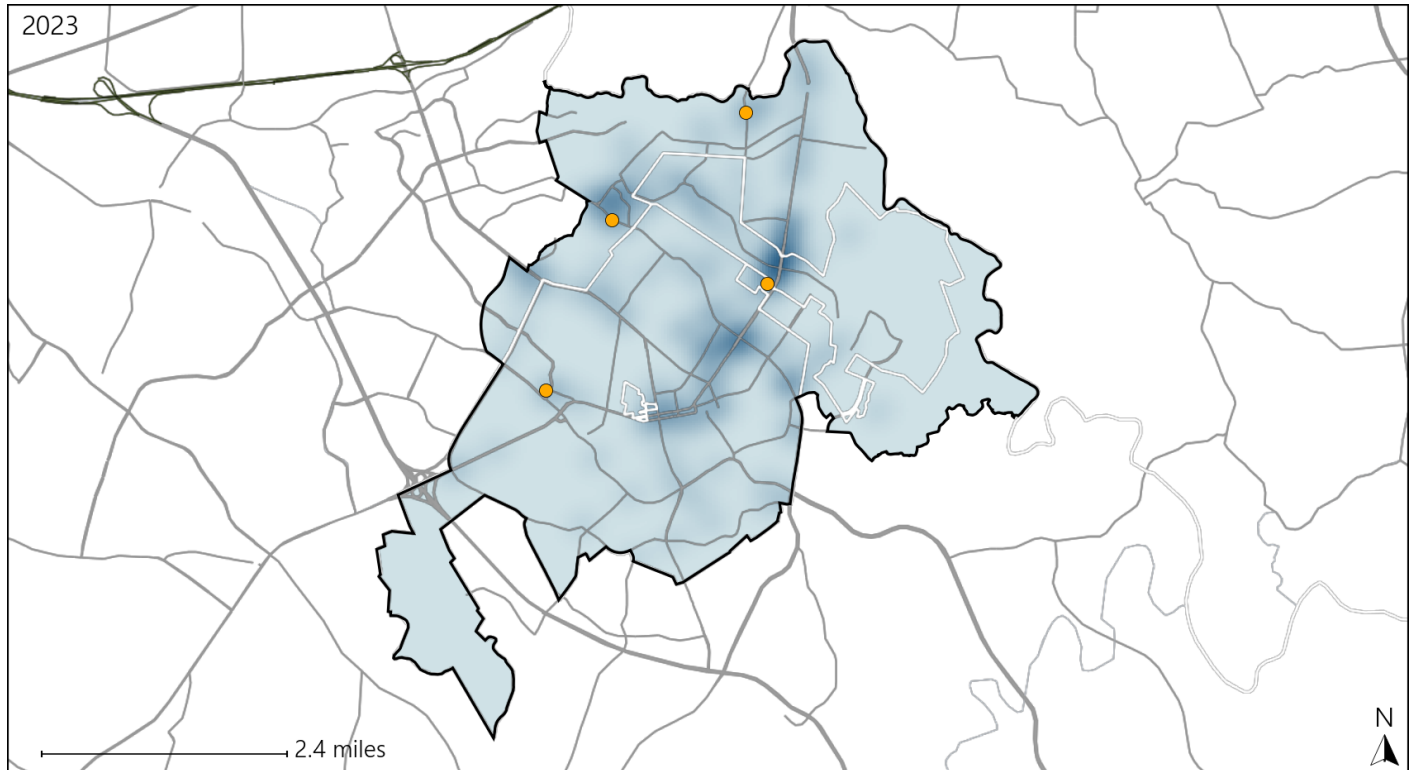


Available Crash Data - Calendar Year (CY)	CY 2020	CY 2021	CY 2022	CY 2023
<b>Total Crashes</b>	<b>662</b>	<b>668</b>	<b>753</b>	<b>841</b>
<b>Fatalities</b>	<b>1</b>	<b>3</b>	<b>3</b>	<b>7</b>
<b>Injuries</b>	<b>579</b>	<b>632</b>	<b>790</b>	<b>934</b>
<b>Unrestrained Fatalities</b>	<b>1</b>	<b>1</b>	<b>2</b>	<b>0</b>
<b>Percent of Unrestrained Fatalities to Total Fatalities</b>	<b>100%</b>	<b>33%</b>	<b>67%</b>	<b>0%</b>
<b>Unrestrained Injuries</b>	<b>23</b>	<b>20</b>	<b>15</b>	<b>12</b>
<b>Percent of Unrestrained Injuries to Total Injuries</b>	<b>4%</b>	<b>3%</b>	<b>2%</b>	<b>1%</b>

# Virginia House District 20 Distracted Driving Crash Statistics

Report Generated May, 2024

	Count	Highest Time Period(s)	Highest Day(s)	Highest Month(s)
<b>Fatal Crashes</b>	0	-	-	-
<b>Resulting Fatalities</b>	0	-	-	-
<b>Serious Injury Crashes</b>	4	3:00pm - 5:59pm (50%)	Monday (75%)	January - June (50%)



## House District 20 Distracted Driving-Related Crashes

- |                    |                        |
|--------------------|------------------------|
| Interstate Crashes | Non-interstate Crashes |
| ● Fatal            | ● Fatal                |
| ● Serious Injury   | ● Serious Injury       |

The blue gradient represents the density of all distracted driving-related crashes.



Available Crash Data - Calendar Year (CY)	CY 2020	CY 2021	CY 2022	CY 2023
Total Crashes	662	668	753	841
Fatal Crashes	1	3	3	7
Injury Crashes	344	352	424	505
Distracted Driving-Related Fatal Crashes	0	0	0	0
Percent of Distracted Driving-Related Fatal Crashes to Total Fatal Crashes	0%	0%	0%	0%
Distracted Driving-Related Injury Crashes	81	63	98	99
Percent of Distracted Driving-Related Injury Crashes to Total Injury Crashes	24%	18%	23%	20%