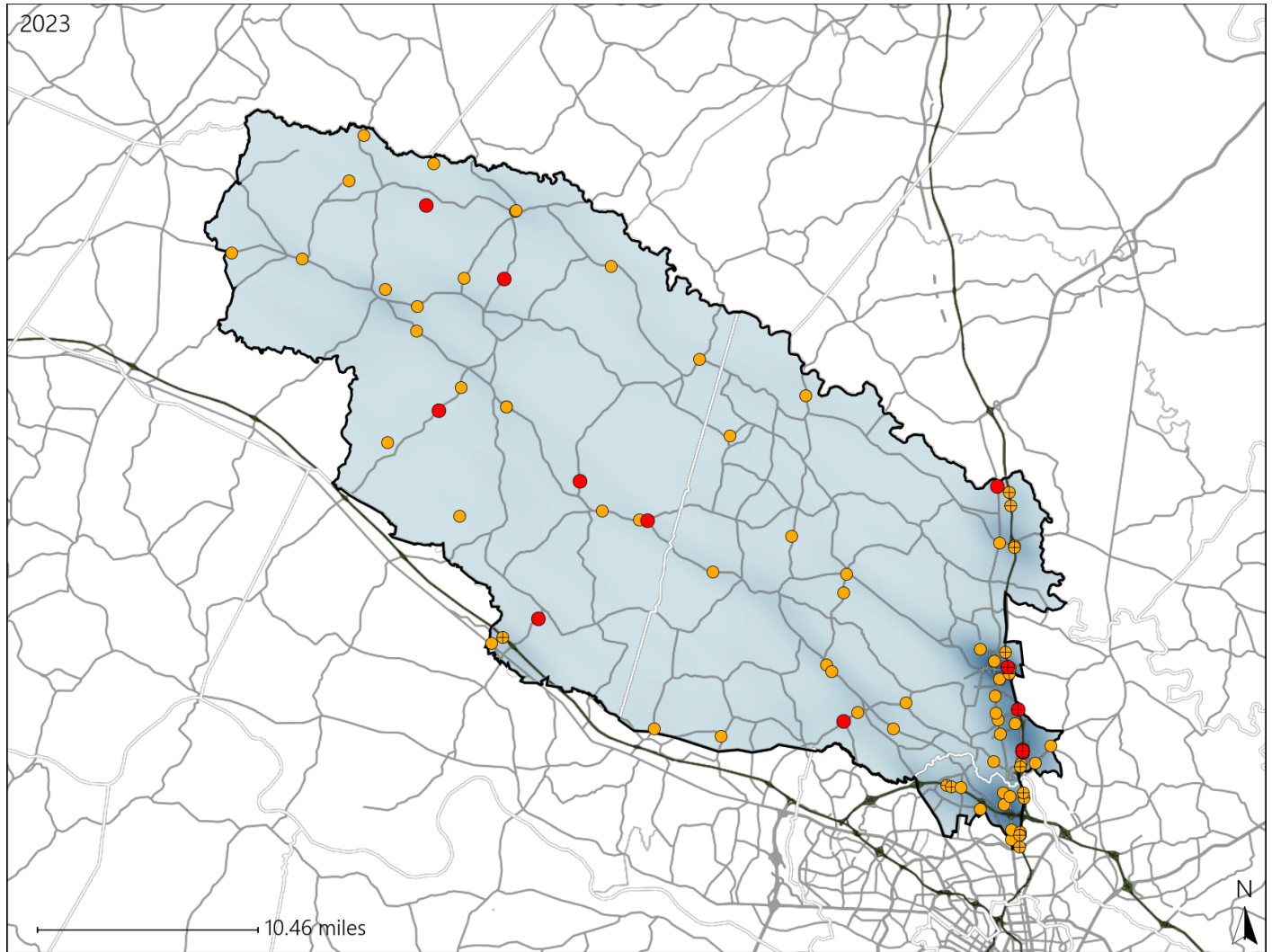


Virginia House District 59 Crash Statistics

Report Generated May, 2024

	Count	Highest Time Period(s)	Highest Day(s)	Highest Month(s)
Fatal Crashes	13	3:00pm - 5:59pm (23%)	Saturday (38%)	August • November (46%)
Resulting Fatalities	16			
Serious Injury Crashes	72	3:00pm - 5:59pm (22%)	Friday • Saturday (34%)	July (14%)



House District 59 Crashes

Interstate Crashes

- Fatal
- Serious Injury

Non-interstate Crashes

- Fatal
- Serious Injury

The blue gradient represents the density of all crashes.

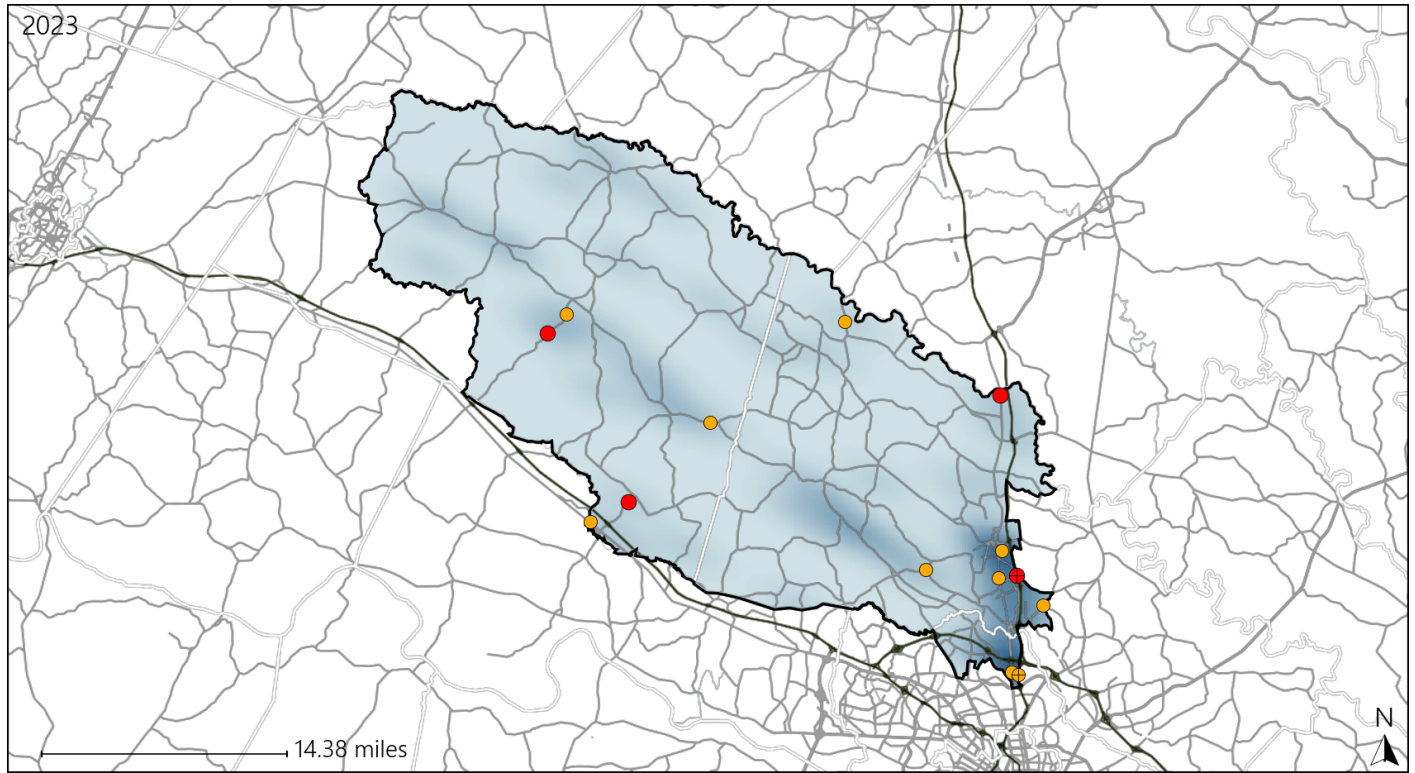


Available Crash Data - Calendar Year (CY)	CY 2020	CY 2021	CY 2022	CY 2023
Total Crashes	1257	1514	1515	1521
Fatal Crashes	13	22	23	13
Injury Crashes	364	394	416	427

Virginia House District 59 Alcohol Crash Statistics

Report Generated May, 2024

	Count	Highest Time Period(s)	Highest Day(s)	Highest Month(s)
Fatal Crashes	4	3:00pm - 5:59pm	Saturday	April • August
Resulting Fatalities	4	6:00pm - 8:59pm (50%)	(75%)	(50%)
Serious Injury Crashes	10	6:00pm - 8:59pm 9:00pm - 11:59pm (60%)	Saturday • Wednesday (60%)	June • September (40%)



House District 59 Alcohol-Related Crashes

Interstate Crashes Non-interstate Crashes
 ● Fatal ● Fatal
 ⊕ Serious Injury ⊕ Serious Injury

The blue gradient represents the density of all alcohol-related crashes.

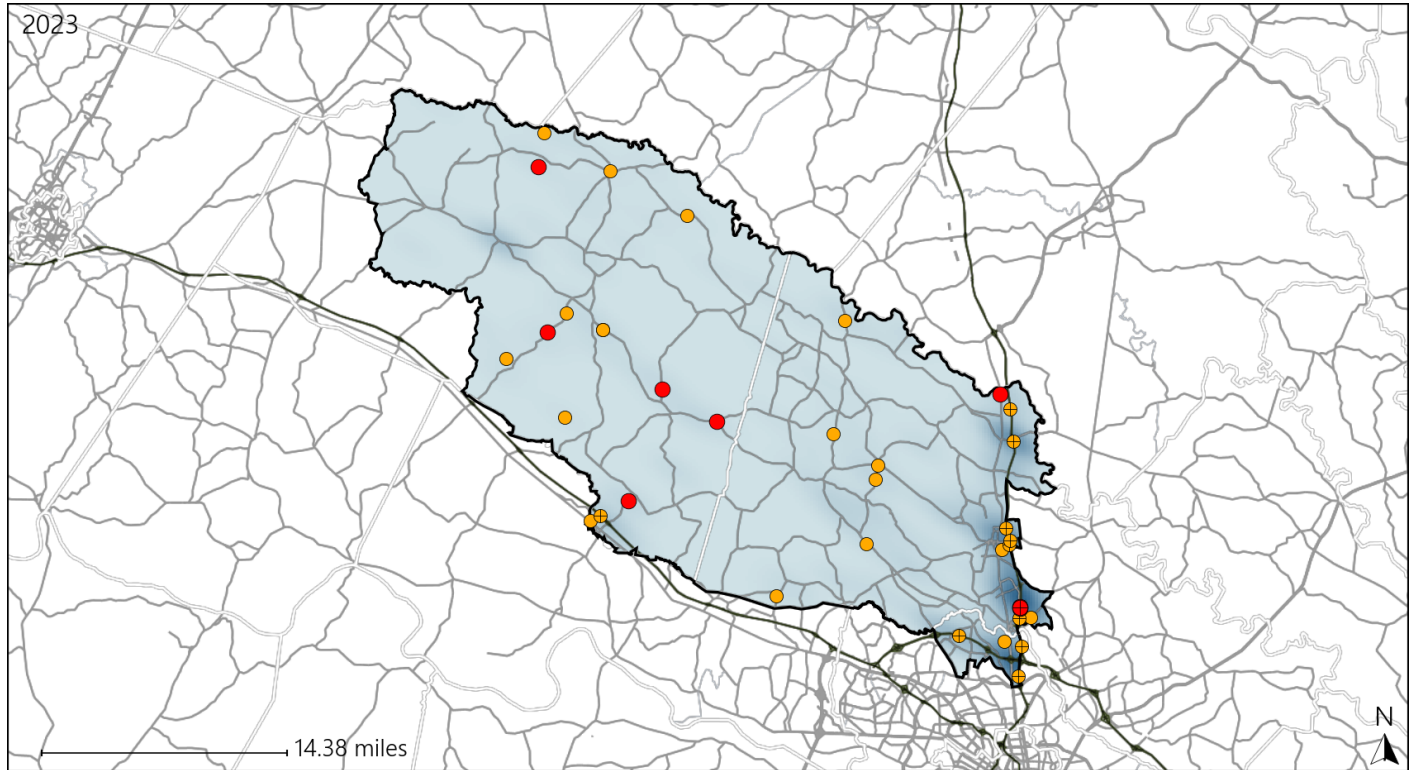


Available Crash Data - Calendar Year (CY)	CY 2020	CY 2021	CY 2022	CY 2023
Total Crashes	1257	1514	1515	1521
Fatal Crashes	13	22	23	13
Injury Crashes	364	394	416	427
Alcohol-Related Fatal Crashes	6	5	4	4
Percent of Alcohol-Related Fatal Crashes to Total Fatal Crashes	46%	23%	17%	31%
Alcohol-Related Injury Crashes	23	29	27	30
Percent of Alcohol-Related Injury Crashes to Total Injury Crashes	6%	7%	6%	7%

Virginia House District 59 Speed Crash Statistics

Report Generated May, 2024

	Count	Highest Time Period(s)	Highest Day(s)	Highest Month(s)
Fatal Crashes	9	3:00pm - 5:59pm	Saturday	August
Resulting Fatalities	12	6:00pm - 8:59pm (44%)	(44%)	(33%)
Serious Injury Crashes	29	9:00pm - 11:59pm (24%)	Friday • Thursday (34%)	August (17%)



House District 59 Speed-Related Crashes

Interstate Crashes

Non-interstate Crashes

- Fatal
- Serious Injury

- Fatal
- Serious Injury

The blue gradient represents the density of all speed-related crashes.

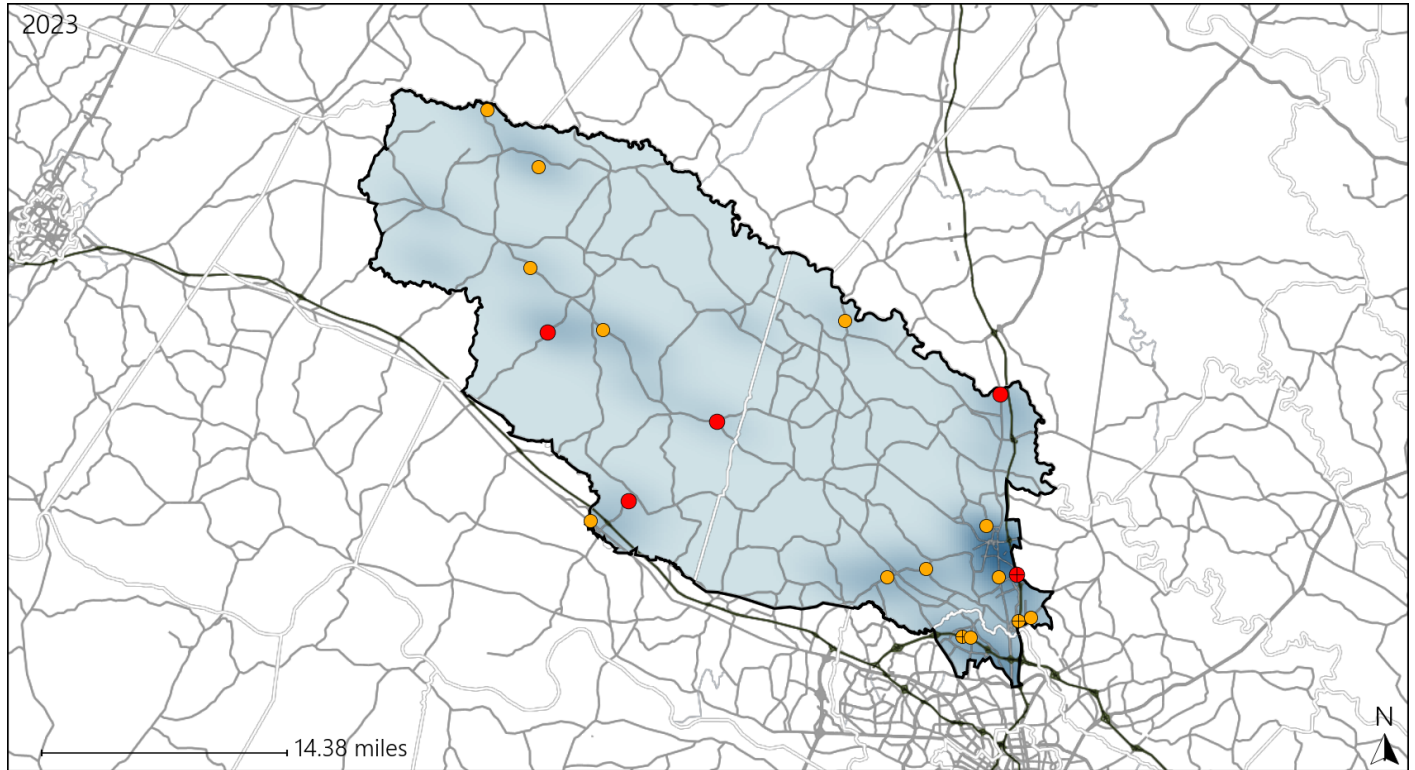


Available Crash Data - Calendar Year (CY)	CY 2020	CY 2021	CY 2022	CY 2023
Total Crashes	1257	1514	1515	1521
Fatal Crashes	13	22	23	13
Injury Crashes	364	394	416	427
Speed-Related Fatal Crashes	3	9	8	9
Percent of Speed-Related Fatal Crashes to Total Fatal Crashes	23%	41%	35%	69%
Speed-Related Injury Crashes	82	80	74	83
Percent of Speed-Related Injury Crashes to Total Injury Crashes	23%	20%	18%	19%

Virginia House District 59 Unrestrained Crash Statistics

Report Generated May, 2024

	Count	Highest Time Period(s)	Highest Day(s)	Highest Month(s)
Fatal Crashes	5	3:00pm - 5:59pm	Saturday	August
Unrestrained Fatalities	5	6:00pm - 8:59pm (40%)	(60%)	(40%)
Serious Injury Crashes	14	3:00pm - 5:59pm (29%)	Friday - Wednesday (42%)	December (29%)



House District 59 Unrestrained-Related Crashes

Interstate Crashes

Non-interstate Crashes

- Fatal
- Serious Injury

- Fatal
- Serious Injury

The blue gradient represents the density of all unrestrained-related crashes.

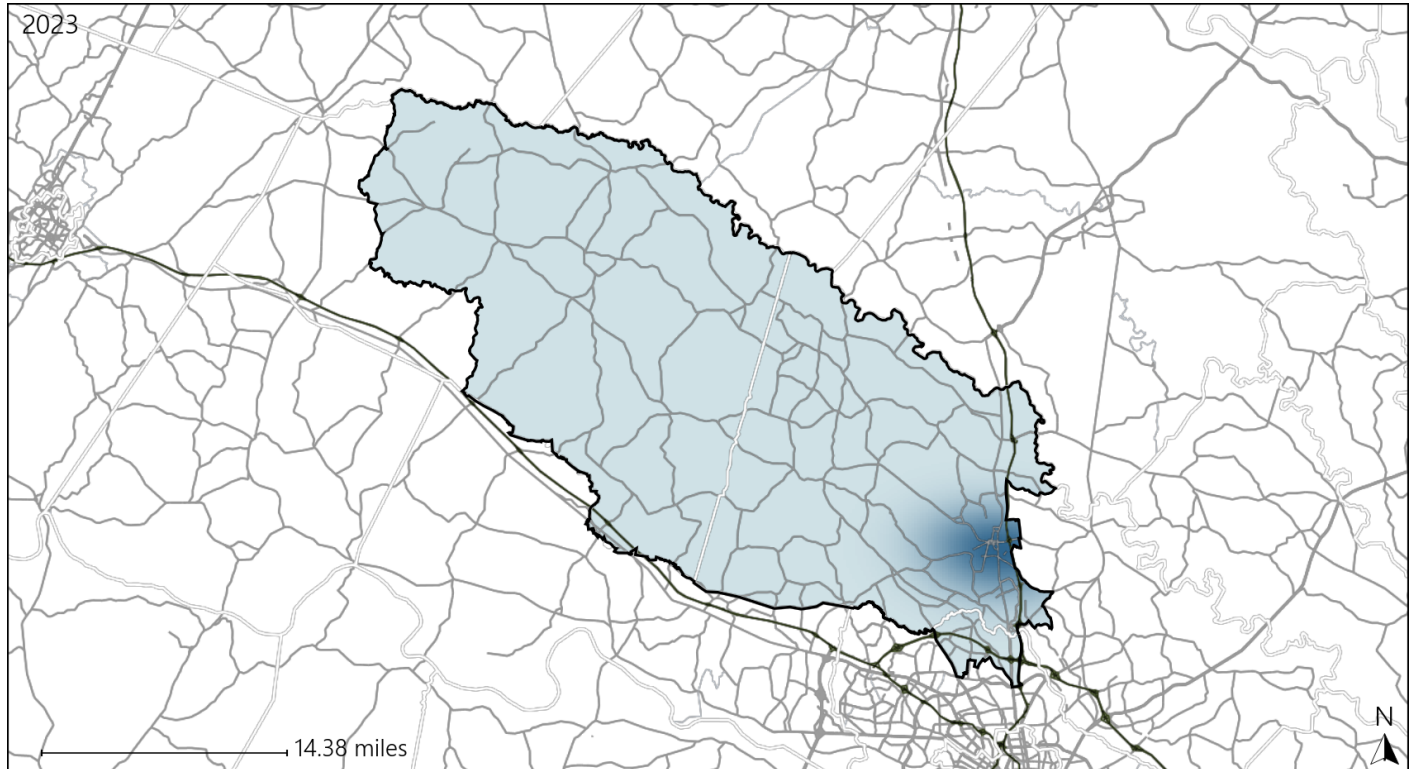


Available Crash Data - Calendar Year (CY)	CY 2020	CY 2021	CY 2022	CY 2023
Total Crashes	1257	1514	1515	1521
Fatalities	13	22	25	16
Injuries	545	588	665	659
Unrestrained Fatalities	9	7	11	5
Percent of Unrestrained Fatalities to Total Fatalities	69%	32%	44%	31%
Unrestrained Injuries	65	62	67	47
Percent of Unrestrained Injuries to Total Injuries	12%	11%	10%	7%

Virginia House District 59 Bicycle Crash Statistics

Report Generated May, 2024

	Count	Highest Time Period(s)	Highest Day(s)	Highest Month(s)
Fatal Crashes	0	-	-	-
Bicycle Fatalities	0	-	-	-
Serious Injury Crashes	0	-	-	-



House District 59 Bicycle-Related Crashes

Interstate Crashes Non-interstate Crashes
 ● Fatal ● Fatal
 ⊕ Serious Injury ⊕ Serious Injury

The blue gradient represents the density of all bicycle-related crashes.

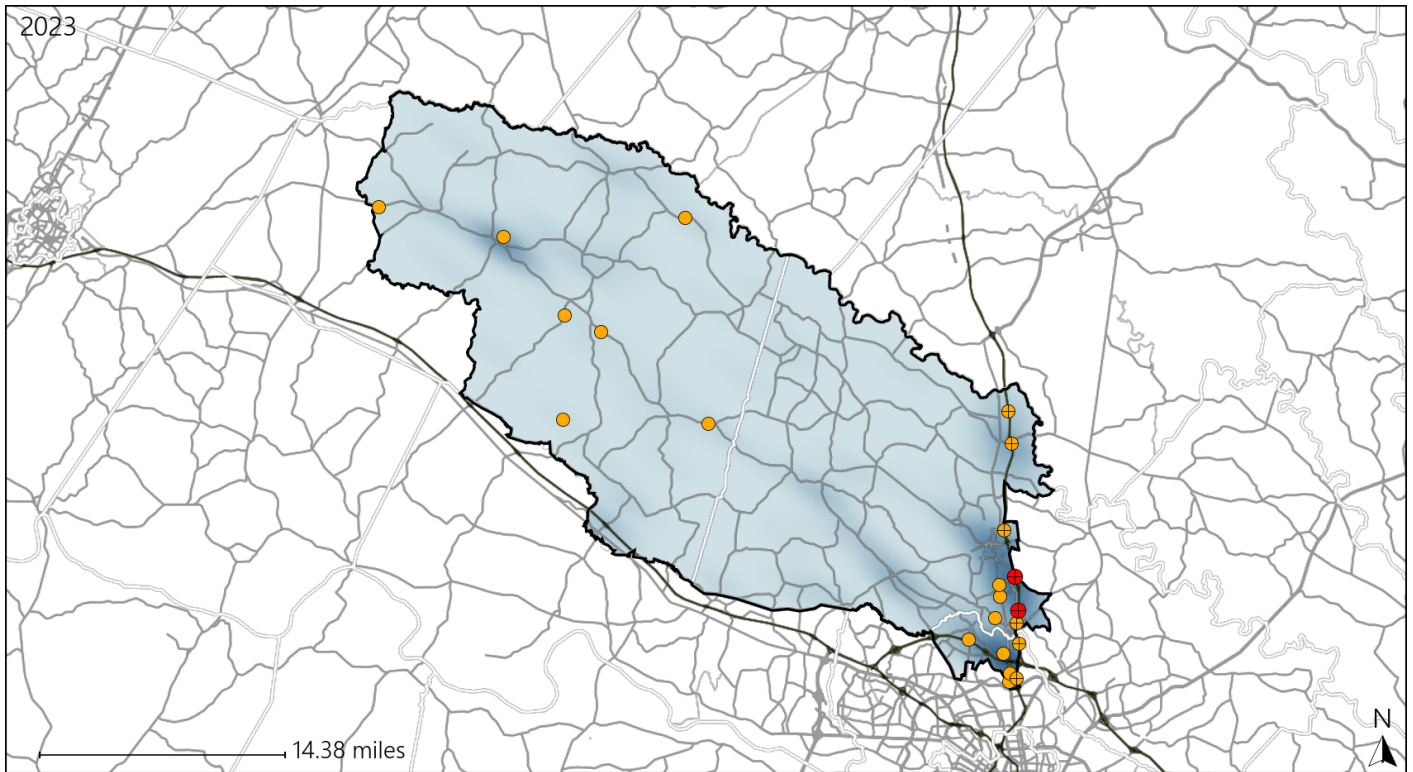


Available Crash Data - Calendar Year (CY)	CY 2020	CY 2021	CY 2022	CY 2023
Total Crashes	1257	1514	1515	1521
Fatal Crashes	13	22	23	13
Injury Crashes	364	394	416	427
Bicycle-Related Fatal Crashes	0	0	0	0
Percent of Bicycle-Related Fatal Crashes to Total Fatal Crashes	0%	0%	0%	0%
Bicycle-Related Injury Crashes	1	4	1	5
Percent of Bicycle-Related Injury Crashes to Total Injury Crashes	0%	1%	0%	1%

Virginia House District 59 Distracted Driving Crash Statistics

Report Generated May, 2024

	Count	Highest Time Period(s)	Highest Day(s)	Highest Month(s)
Fatal Crashes	2	Midnight - 2:59am	Saturday	August • February
Resulting Fatalities	4	(100%)	(100%)	(100%)
Serious Injury Crashes	20	6:00am - 8:59am 9:00am - 11:59am	Thursday	August • July
		(40%)	(25%)	(30%)



House District 59 Distracted Driving-Related Crashes

- | | |
|--------------------|------------------------|
| Interstate Crashes | Non-interstate Crashes |
| ● Fatal | ● Fatal |
| ⊕ Serious Injury | ⊕ Serious Injury |

The blue gradient represents the density of all distracted driving-related crashes.



Available Crash Data - Calendar Year (CY)	CY 2020	CY 2021	CY 2022	CY 2023
Total Crashes	1257	1514	1515	1521
Fatal Crashes	13	22	23	13
Injury Crashes	364	394	416	427
Distracted Driving-Related Fatal Crashes	0	2	2	2
Percent of Distracted Driving-Related Fatal Crashes to Total Fatal Crashes	0%	9%	9%	15%
Distracted Driving-Related Injury Crashes	69	83	71	74
Percent of Distracted Driving-Related Injury Crashes to Total Injury Crashes	19%	21%	17%	17%