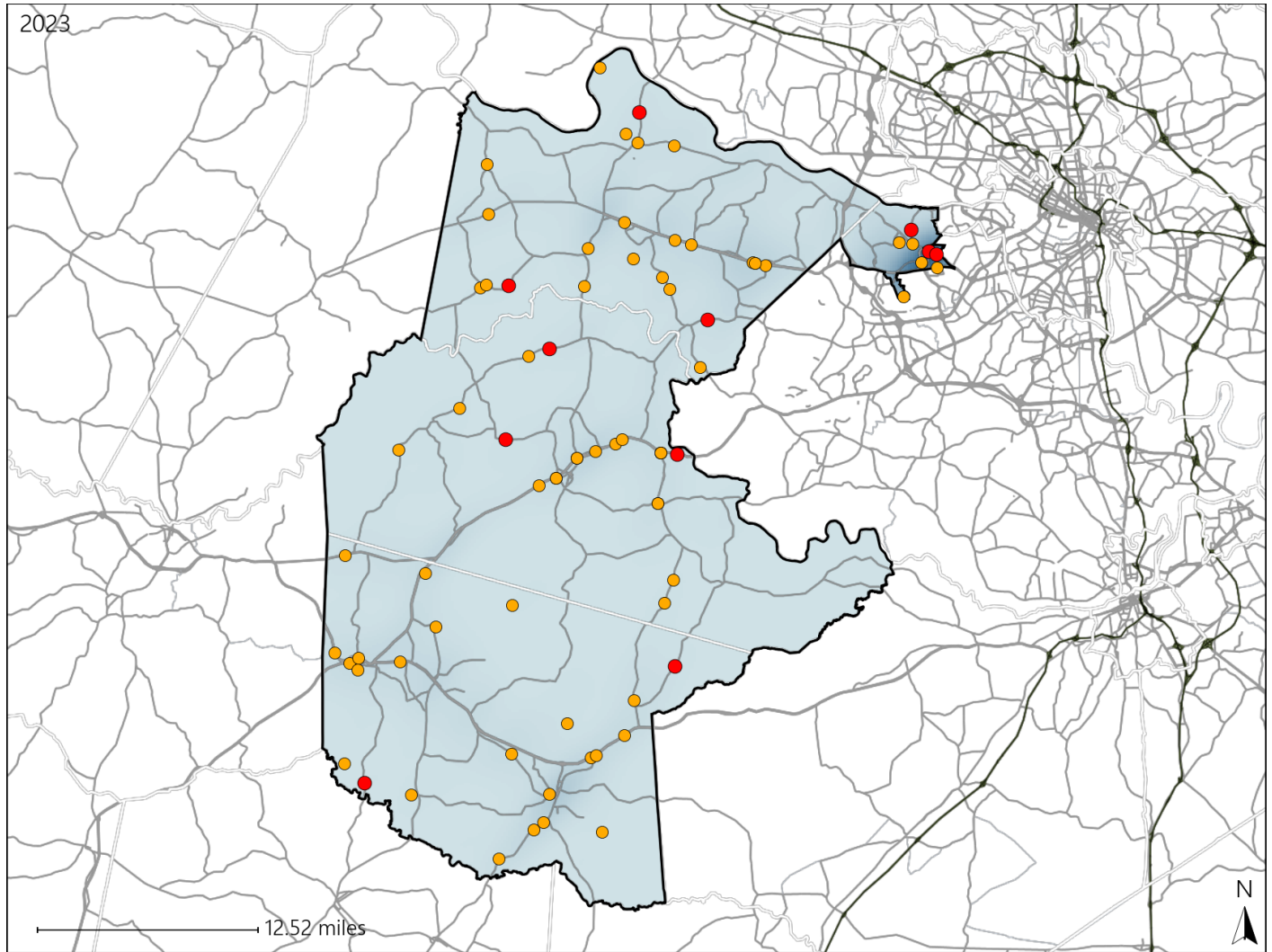


# Virginia House District 72 Crash Statistics

Report Generated May, 2024

	Count	Highest Time Period(s)	Highest Day(s)	Highest Month(s)
<b>Fatal Crashes</b>	<b>11</b>	<b>3:00pm - 5:59pm</b>	<b>Friday</b>	<b>April</b>
<b>Resulting Fatalities</b>	<b>13</b>	(36%)	(36%)	(27%)
<b>Serious Injury Crashes</b>	<b>66</b>	<b>9:00am - 11:59am</b>	<b>Sunday</b>	<b>September</b>
		(20%)	(23%)	(17%)



### House District 72 Crashes

Interstate Crashes

- Fatal
- Serious Injury

Non-interstate Crashes

- Fatal
- Serious Injury

The blue gradient represents the density of all crashes.

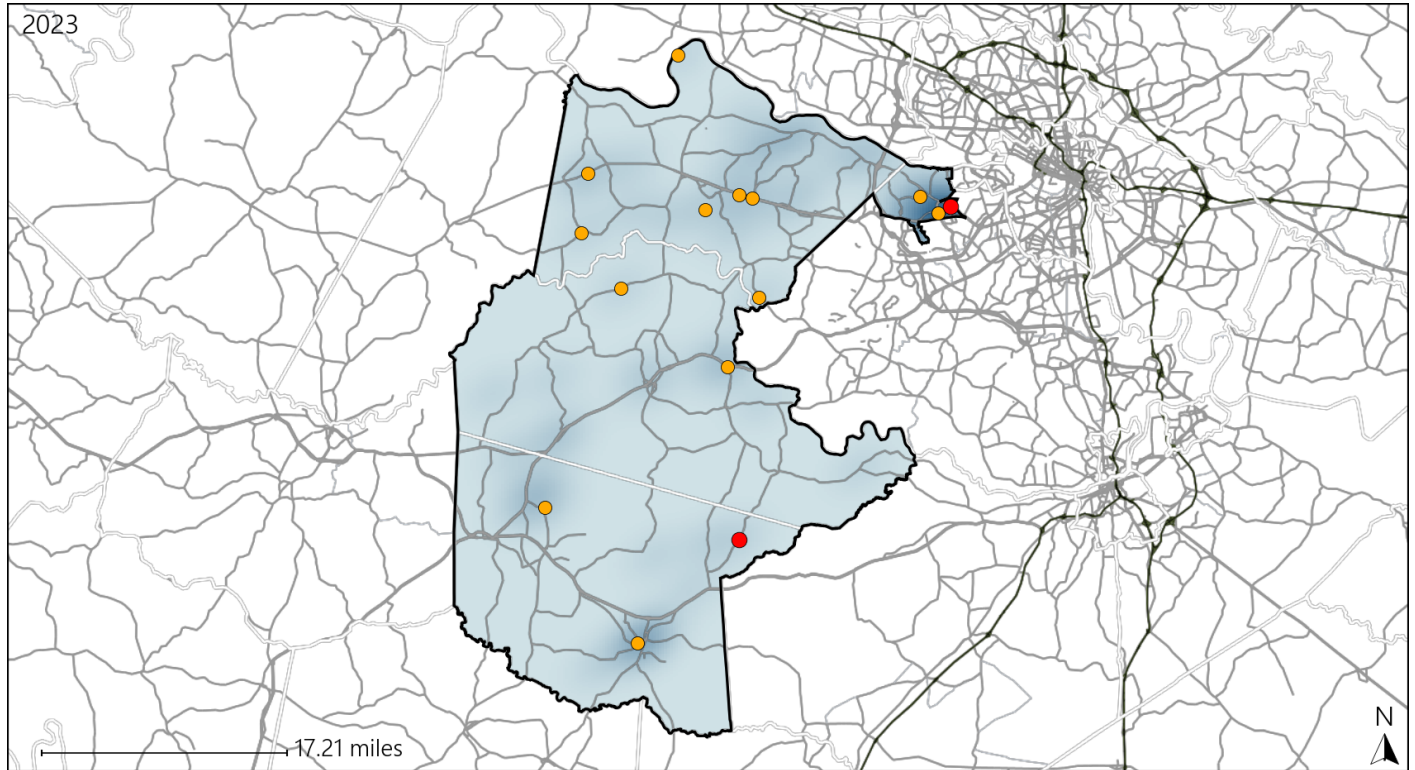


Available Crash Data - Calendar Year (CY)	CY 2020	CY 2021	CY 2022	CY 2023
<b>Total Crashes</b>	<b>999</b>	<b>1114</b>	<b>1101</b>	<b>1206</b>
<b>Fatal Crashes</b>	<b>16</b>	<b>12</b>	<b>16</b>	<b>11</b>
<b>Injury Crashes</b>	<b>284</b>	<b>309</b>	<b>270</b>	<b>318</b>

# Virginia House District 72 Alcohol Crash Statistics

Report Generated May, 2024

	Count	Highest Time Period(s)	Highest Day(s)	Highest Month(s)
<b>Fatal Crashes</b>	<b>2</b>	3:00pm - 5:59pm	Friday • Sunday	April • July
<b>Resulting Fatalities</b>	<b>2</b>	6:00pm - 8:59pm (100%)	(100%)	(100%)
<b>Serious Injury Crashes</b>	<b>13</b>	9:00pm - 11:59pm (31%)	Saturday (38%)	December • February (30%)



### House District 72 Alcohol-Related Crashes

Interstate Crashes                      Non-interstate Crashes  
 ● Fatal                                      ● Fatal  
 ● Serious Injury                          ● Serious Injury

The blue gradient represents the density of all alcohol-related crashes.

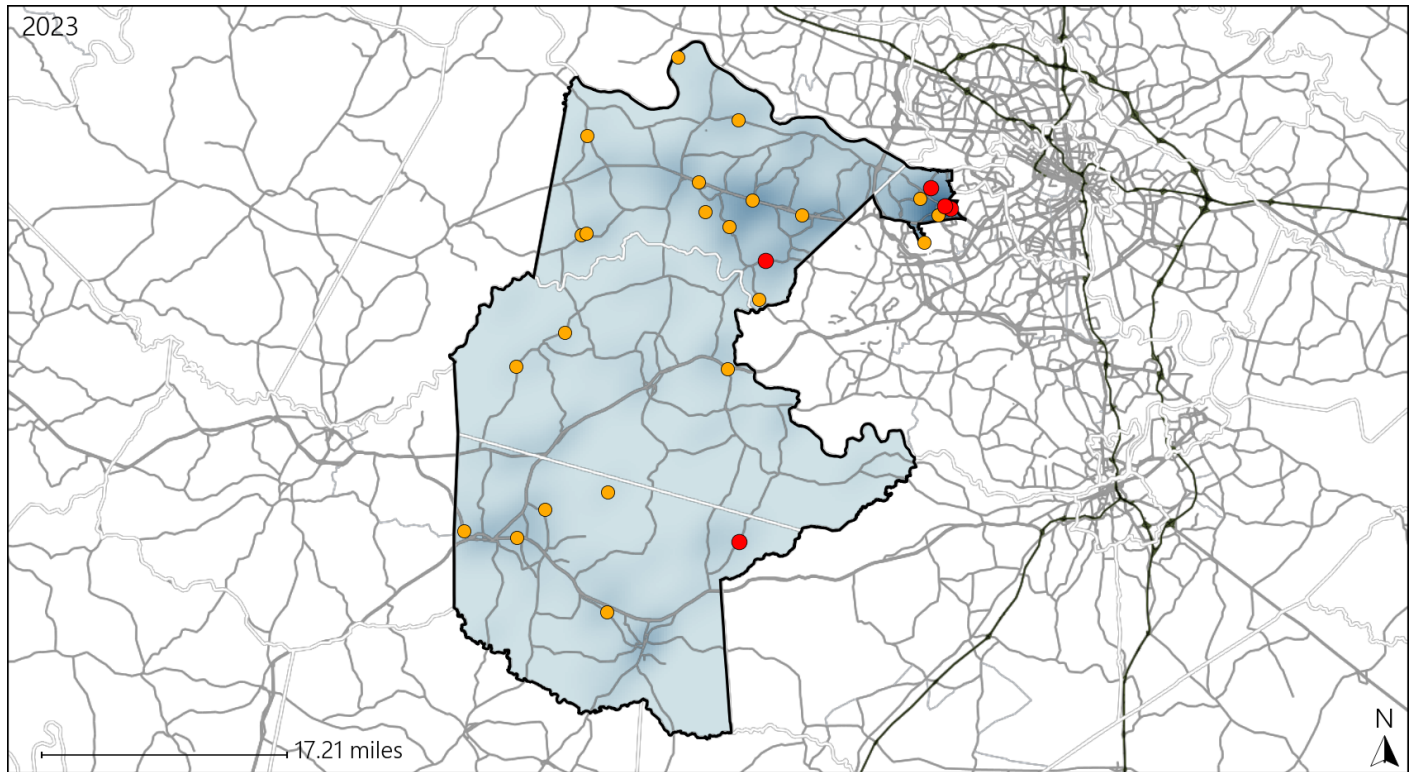


Available Crash Data - Calendar Year (CY)	CY 2020	CY 2021	CY 2022	CY 2023
Total Crashes	999	1114	1101	1206
Fatal Crashes	16	12	16	11
Injury Crashes	284	309	270	318
Alcohol-Related Fatal Crashes	5	4	4	2
Percent of Alcohol-Related Fatal Crashes to Total Fatal Crashes	31%	33%	25%	18%
Alcohol-Related Injury Crashes	19	21	25	25
Percent of Alcohol-Related Injury Crashes to Total Injury Crashes	7%	7%	9%	8%

# Virginia House District 72 Speed Crash Statistics

Report Generated May, 2024

	Count	Highest Time Period(s)	Highest Day(s)	Highest Month(s)
<b>Fatal Crashes</b>	<b>5</b>	<b>3:00pm - 5:59pm</b>	<b>Wednesday</b>	<b>April</b>
<b>Resulting Fatalities</b>	<b>6</b>	<b>(80%)</b>	<b>(40%)</b>	<b>(60%)</b>
<b>Serious Injury Crashes</b>	<b>22</b>	<b>9:00am - 11:59am</b> <b>9:00pm - 11:59pm</b>	<b>Sunday</b>	<b>July • March</b>
		<b>(36%)</b>	<b>(32%)</b>	<b>(36%)</b>



## House District 72 Speed-Related Crashes

Interstate Crashes

- Fatal
- Serious Injury

Non-interstate Crashes

- Fatal
- Serious Injury

The blue gradient represents the density of all speed-related crashes.

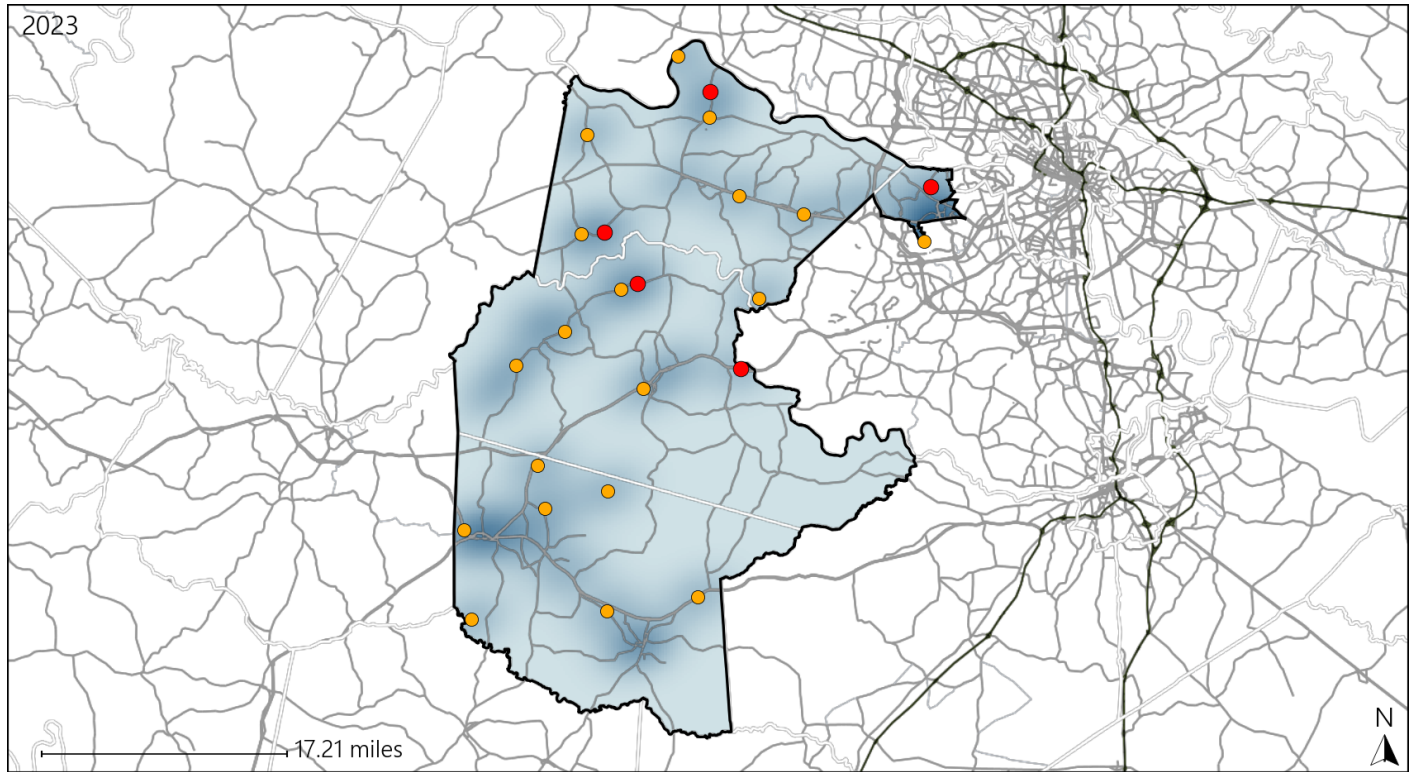


Available Crash Data - Calendar Year (CY)	CY 2020	CY 2021	CY 2022	CY 2023
<b>Total Crashes</b>	<b>999</b>	<b>1114</b>	<b>1101</b>	<b>1206</b>
<b>Fatal Crashes</b>	<b>16</b>	<b>12</b>	<b>16</b>	<b>11</b>
<b>Injury Crashes</b>	<b>284</b>	<b>309</b>	<b>270</b>	<b>318</b>
<b>Speed-Related Fatal Crashes</b>	<b>9</b>	<b>5</b>	<b>7</b>	<b>5</b>
<b>Percent of Speed-Related Fatal Crashes to Total Fatal Crashes</b>	<b>56%</b>	<b>42%</b>	<b>44%</b>	<b>45%</b>
<b>Speed-Related Injury Crashes</b>	<b>65</b>	<b>88</b>	<b>68</b>	<b>61</b>
<b>Percent of Speed-Related Injury Crashes to Total Injury Crashes</b>	<b>23%</b>	<b>28%</b>	<b>25%</b>	<b>19%</b>

# Virginia House District 72 Unrestrained Crash Statistics

Report Generated May, 2024

	Count	Highest Time Period(s)	Highest Day(s)	Highest Month(s)
<b>Fatal Crashes</b>	<b>5</b>	<b>9:00pm - 11:59pm</b>	<b>Thursday</b>	<b>April • December</b>
<b>Unrestrained Fatalities</b>	<b>5</b>	<b>(40%)</b>	<b>(40%)</b>	<b>(40%)</b>
<b>Serious Injury Crashes</b>	<b>19</b>	<b>6:00am - 8:59am</b>	<b>Monday</b>	<b>December • February</b>
		<b>(37%)</b>	<b>(32%)</b>	<b>(32%)</b>



## House District 72 Unrestrained-Related Crashes

Interstate Crashes

- Fatal
- Serious Injury

Non-interstate Crashes

- Fatal
- Serious Injury

The blue gradient represents the density of all unrestrained-related crashes.

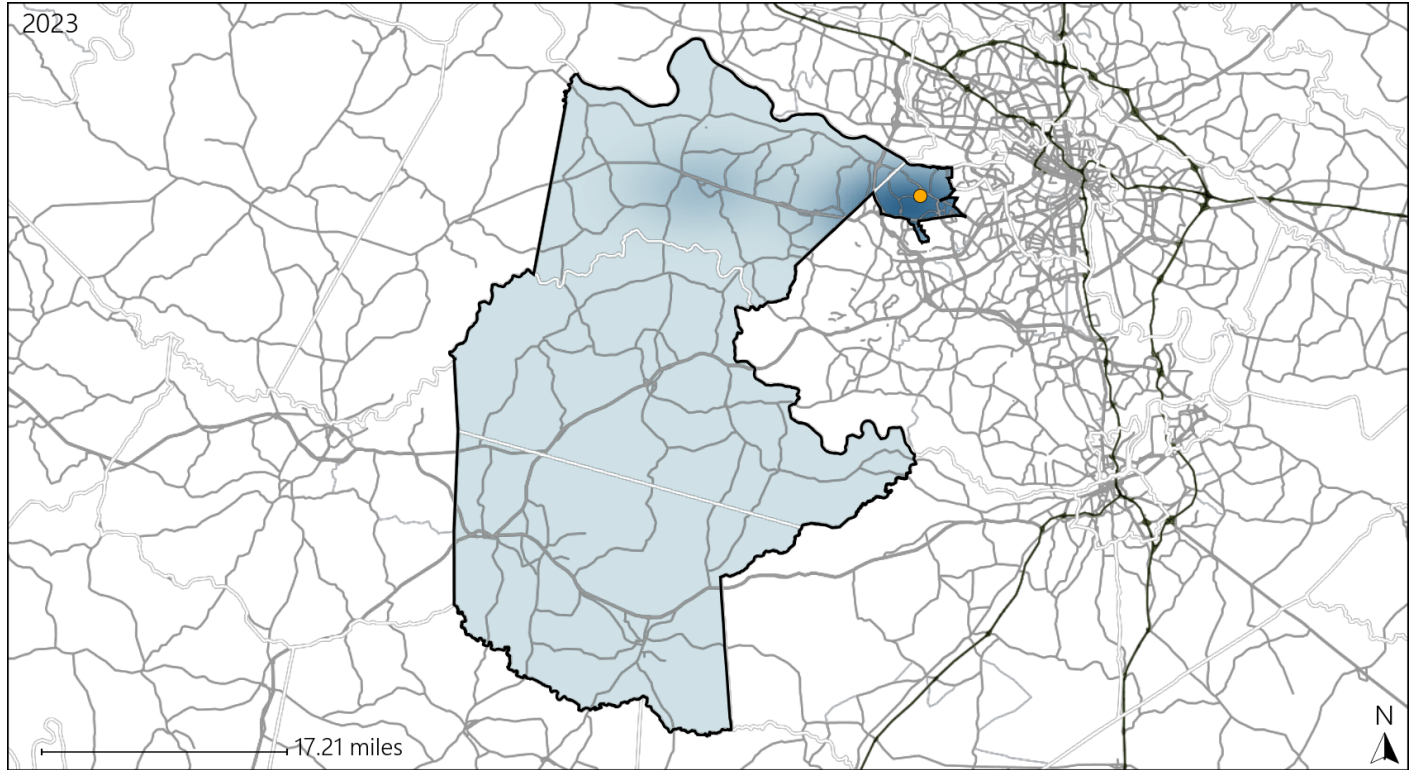


Available Crash Data - Calendar Year (CY)	CY 2020	CY 2021	CY 2022	CY 2023
<b>Total Crashes</b>	999	1114	1101	1206
<b>Fatalities</b>	16	14	20	13
<b>Injuries</b>	430	434	408	473
<b>Unrestrained Fatalities</b>	8	5	10	5
<b>Percent of Unrestrained Fatalities to Total Fatalities</b>	50%	36%	50%	38%
<b>Unrestrained Injuries</b>	60	55	42	39
<b>Percent of Unrestrained Injuries to Total Injuries</b>	14%	13%	10%	8%


# Virginia House District 72 Pedestrian Crash Statistics

Report Generated May, 2024

	Count	Highest Time Period(s)	Highest Day(s)	Highest Month(s)
<b>Fatal Crashes</b>	<b>0</b>	-	-	-
<b>Pedestrian Fatalities</b>	<b>0</b>	-	-	-
<b>Serious Injury Crashes</b>	<b>1</b>	<b>9:00pm - 11:59pm</b> (100%)	<b>Saturday</b> (100%)	<b>July</b> (100%)



## House District 72 Pedestrian-Related Crashes

- |  |  |
|--|--|
| Interstate Crashes   | Non-interstate Crashes   |
|  Fatal          |  Fatal          |
|  Serious Injury |  Serious Injury |

The blue gradient represents the density of all pedestrian-related crashes.

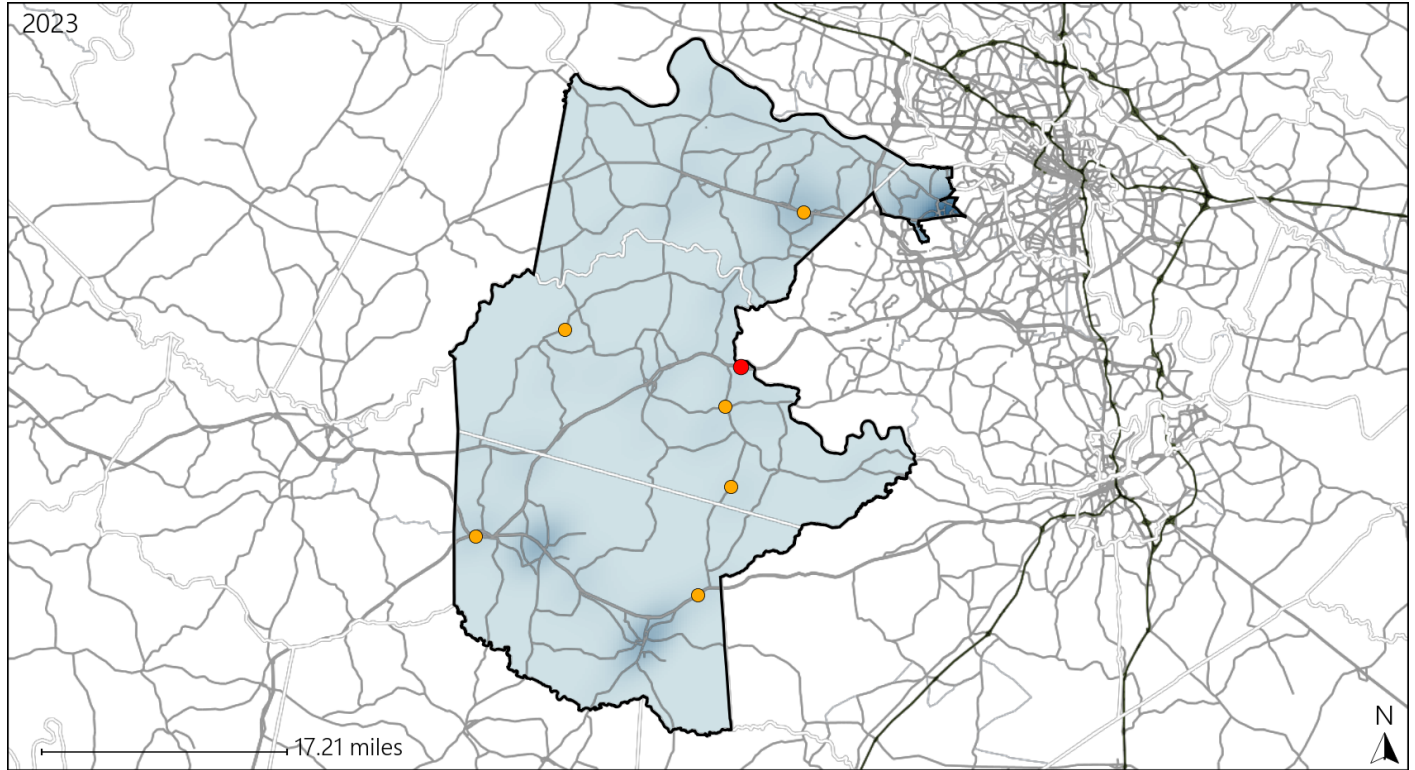


Available Crash Data - Calendar Year (CY)	CY 2020	CY 2021	CY 2022	CY 2023
Total Crashes	999	1114	1101	1206
Fatal Crashes	16	12	16	11
Injury Crashes	284	309	270	318
Pedestrian-Related Fatal Crashes	2	1	0	0
Percent of Pedestrian-Related Fatal Crashes to Total Fatal Crashes	13%	8%	0%	0%
Pedestrian-Related Injury Crashes	5	2	2	5
Percent of Pedestrian-Related Injury Crashes to Total Injury Crashes	2%	1%	1%	2%

# Virginia House District 72 Distracted Driving Crash Statistics

Report Generated May, 2024

	Count	Highest Time Period(s)	Highest Day(s)	Highest Month(s)
<b>Fatal Crashes</b>	<b>1</b>	<b>9:00pm - 11:59pm</b>	<b>Friday</b>	<b>June</b>
<b>Resulting Fatalities</b>	<b>1</b>	(100%)	(100%)	(100%)
<b>Serious Injury Crashes</b>	<b>6</b>	<b>6:00am - 8:59am</b>	<b>Sunday • Thursday</b>	<b>March</b>
		(50%)	(66%)	(33%)



## House District 72 Distracted Driving-Related Crashes

- |                    |                        |
|--------------------|------------------------|
| Interstate Crashes | Non-interstate Crashes |
| Fatal              | Fatal                  |
| Serious Injury     | Serious Injury         |

The blue gradient represents the density of all distracted driving-related crashes.



Available Crash Data - Calendar Year (CY)	CY 2020	CY 2021	CY 2022	CY 2023
Total Crashes	999	1114	1101	1206
Fatal Crashes	16	12	16	11
Injury Crashes	284	309	270	318
Distracted Driving-Related Fatal Crashes	1	3	0	1
Percent of Distracted Driving-Related Fatal Crashes to Total Fatal Crashes	6%	25%	0%	9%
Distracted Driving-Related Injury Crashes	39	39	33	38
Percent of Distracted Driving-Related Injury Crashes to Total Injury Crashes	14%	13%	12%	12%