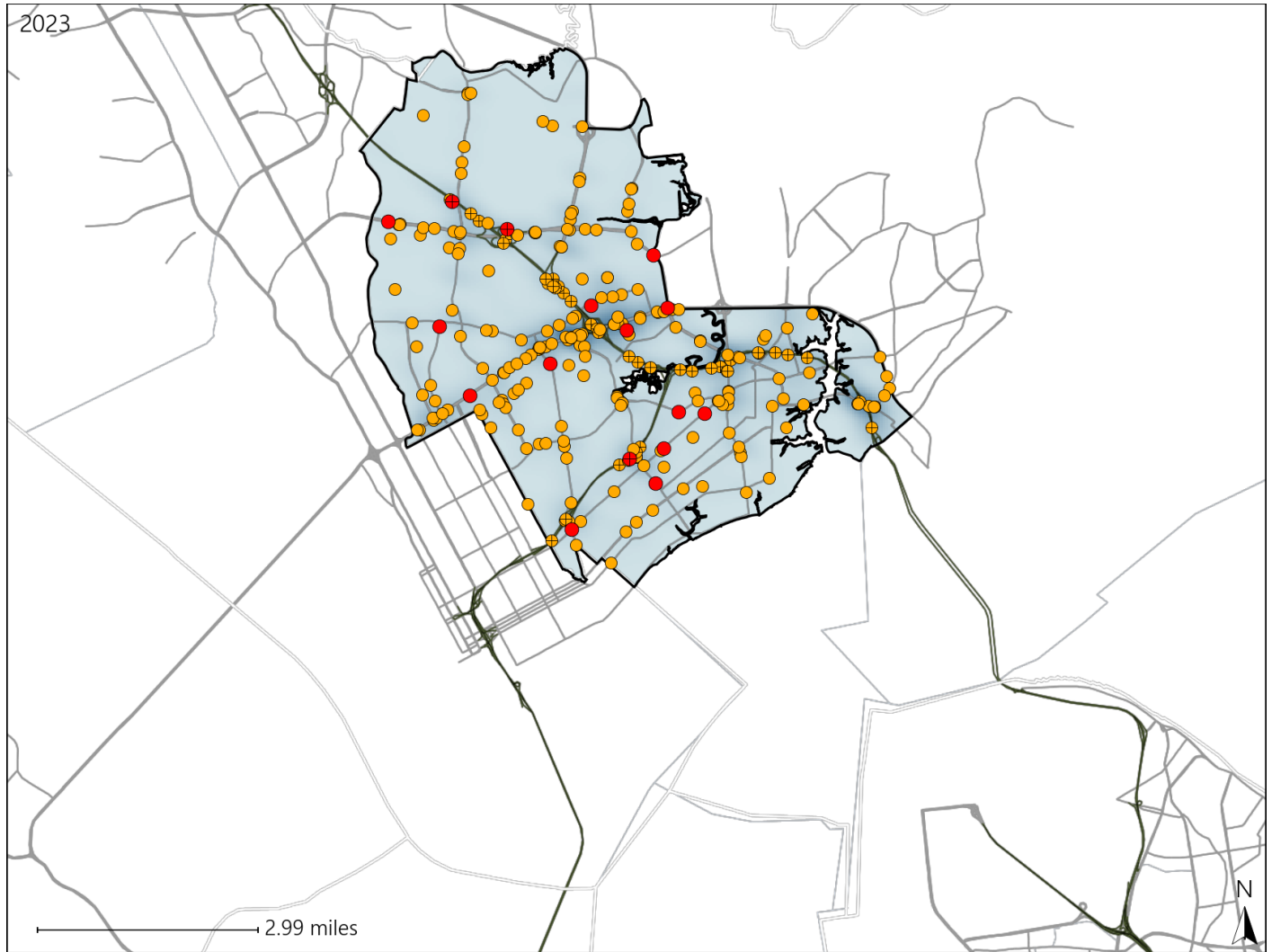


Virginia House District 87 Crash Statistics

Report Generated May, 2024

	Count	Highest Time Period(s)	Highest Day(s)	Highest Month(s)
Fatal Crashes	16	3:00pm - 5:59pm	Sunday	August
Resulting Fatalities	17	(31%)	(38%)	(19%)
Serious Injury Crashes	250	3:00pm - 5:59pm	Wednesday	April
		(22%)	(18%)	(12%)



House District 87 Crashes

Interstate Crashes

- Fatal
- Serious Injury

Non-interstate Crashes

- Fatal
- Serious Injury

The blue gradient represents the density of all crashes.

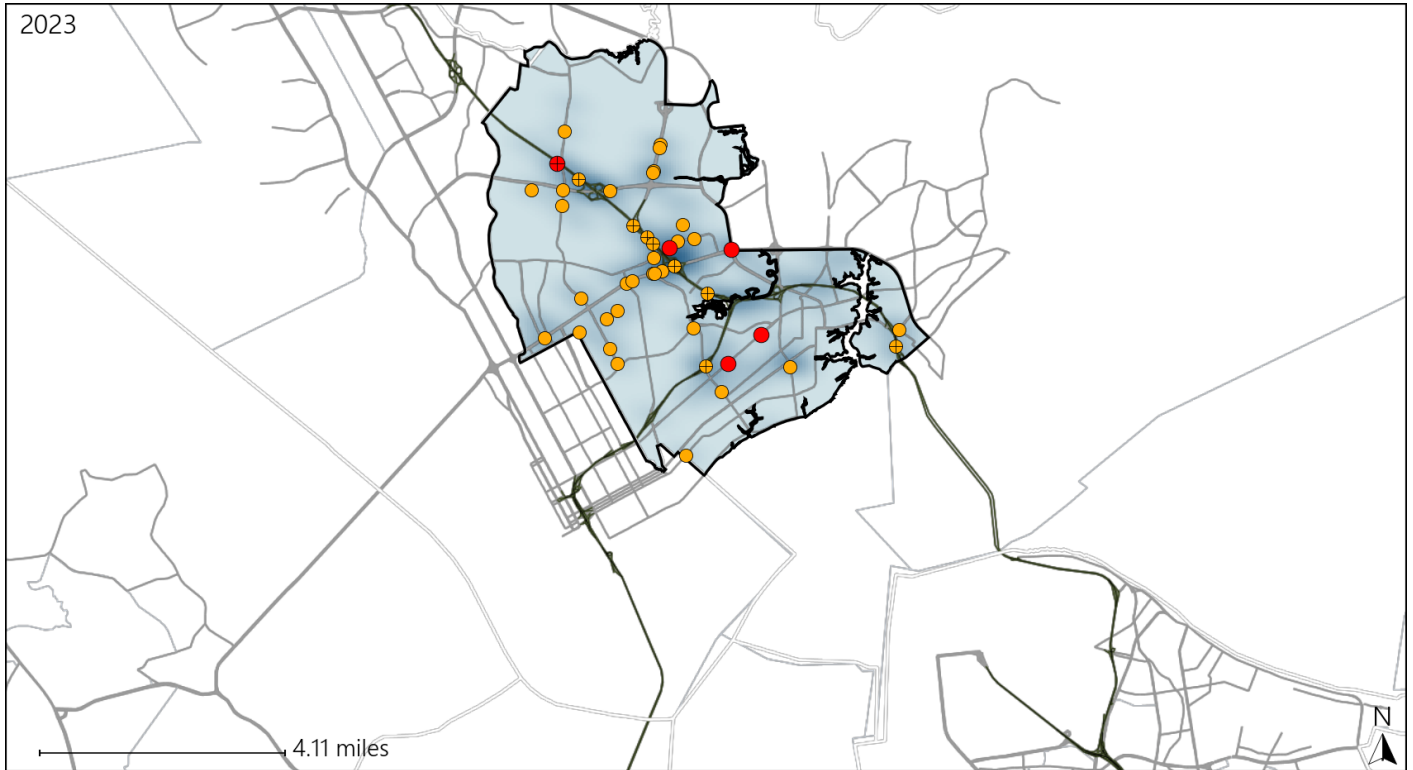


Available Crash Data - Calendar Year (CY)	CY 2020	CY 2021	CY 2022	CY 2023
Total Crashes	2386	2504	2511	2537
Fatal Crashes	14	10	10	16
Injury Crashes	1400	1576	1550	1562

Virginia House District 87 Alcohol Crash Statistics

Report Generated May, 2024

	Count	Highest Time Period(s)	Highest Day(s)	Highest Month(s)
Fatal Crashes	5	9:00pm - 11:59pm	Sunday • Wednesday	April • January
Resulting Fatalities	5	Midnight - 2:59am (80%)	(80%)	(40%)
Serious Injury Crashes	38	Midnight - 2:59am (32%)	Saturday • Sunday (48%)	February • March (36%)



House District 87 Alcohol-Related Crashes

Interstate Crashes

- Fatal
- Serious Injury

Non-interstate Crashes

- Fatal
- Serious Injury

The blue gradient represents the density of all alcohol-related crashes.

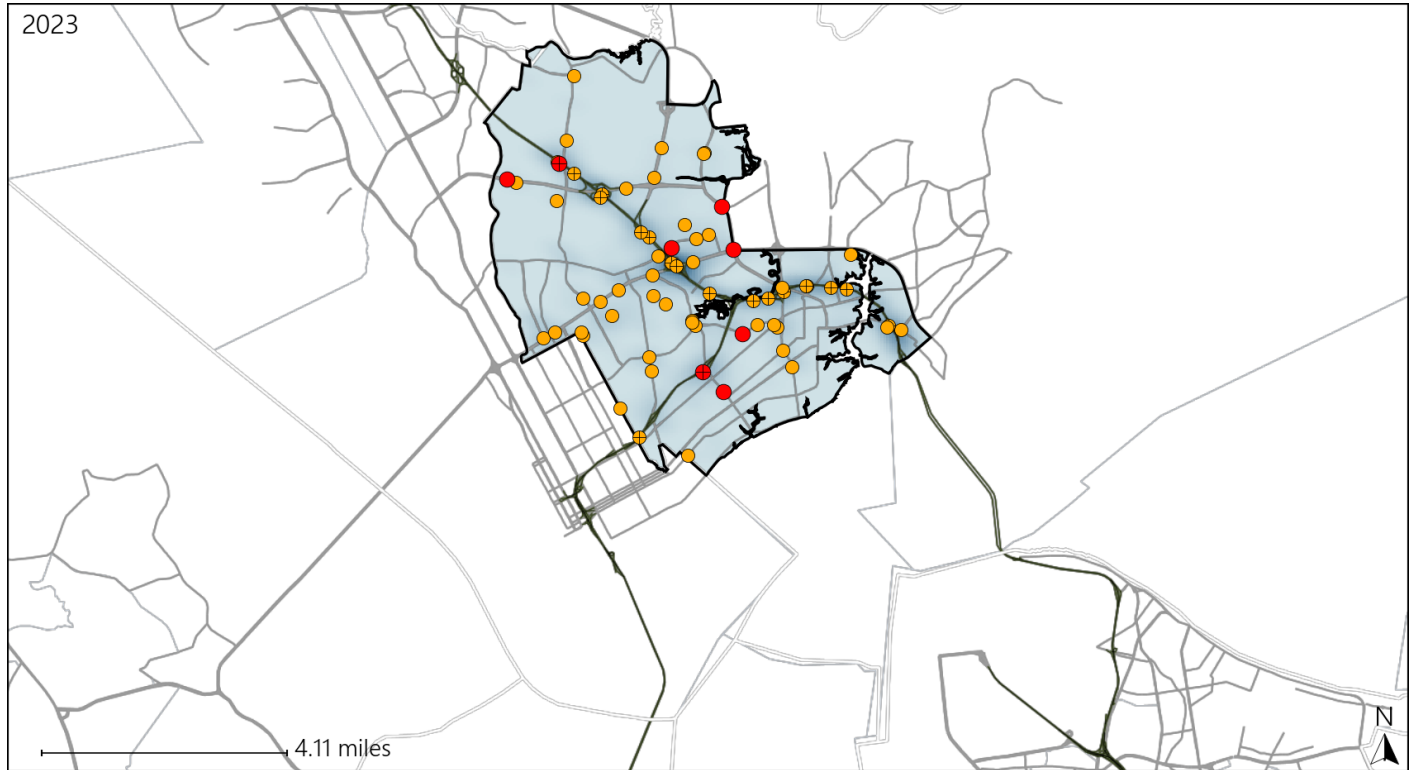


Available Crash Data - Calendar Year (CY)	CY 2020	CY 2021	CY 2022	CY 2023
Total Crashes	2386	2504	2511	2537
Fatal Crashes	14	10	10	16
Injury Crashes	1400	1576	1550	1562
Alcohol-Related Fatal Crashes	6	0	3	5
Percent of Alcohol-Related Fatal Crashes to Total Fatal Crashes	43%	0%	30%	31%
Alcohol-Related Injury Crashes	64	61	75	97
Percent of Alcohol-Related Injury Crashes to Total Injury Crashes	5%	4%	5%	6%

Virginia House District 87 Speed Crash Statistics

Report Generated May, 2024

	Count	Highest Time Period(s)	Highest Day(s)	Highest Month(s)
Fatal Crashes	8	3:00pm - 5:59pm	Sunday	August
Resulting Fatalities	8	9:00am - 11:59am (50%)	(38%)	(25%)
Serious Injury Crashes	59	3:00pm - 5:59pm (20%)	Saturday (22%)	March (20%)



House District 87 Speed-Related Crashes

Interstate Crashes

Non-interstate Crashes

- Fatal
- Serious Injury

- Fatal
- Serious Injury

The blue gradient represents the density of all speed-related crashes.

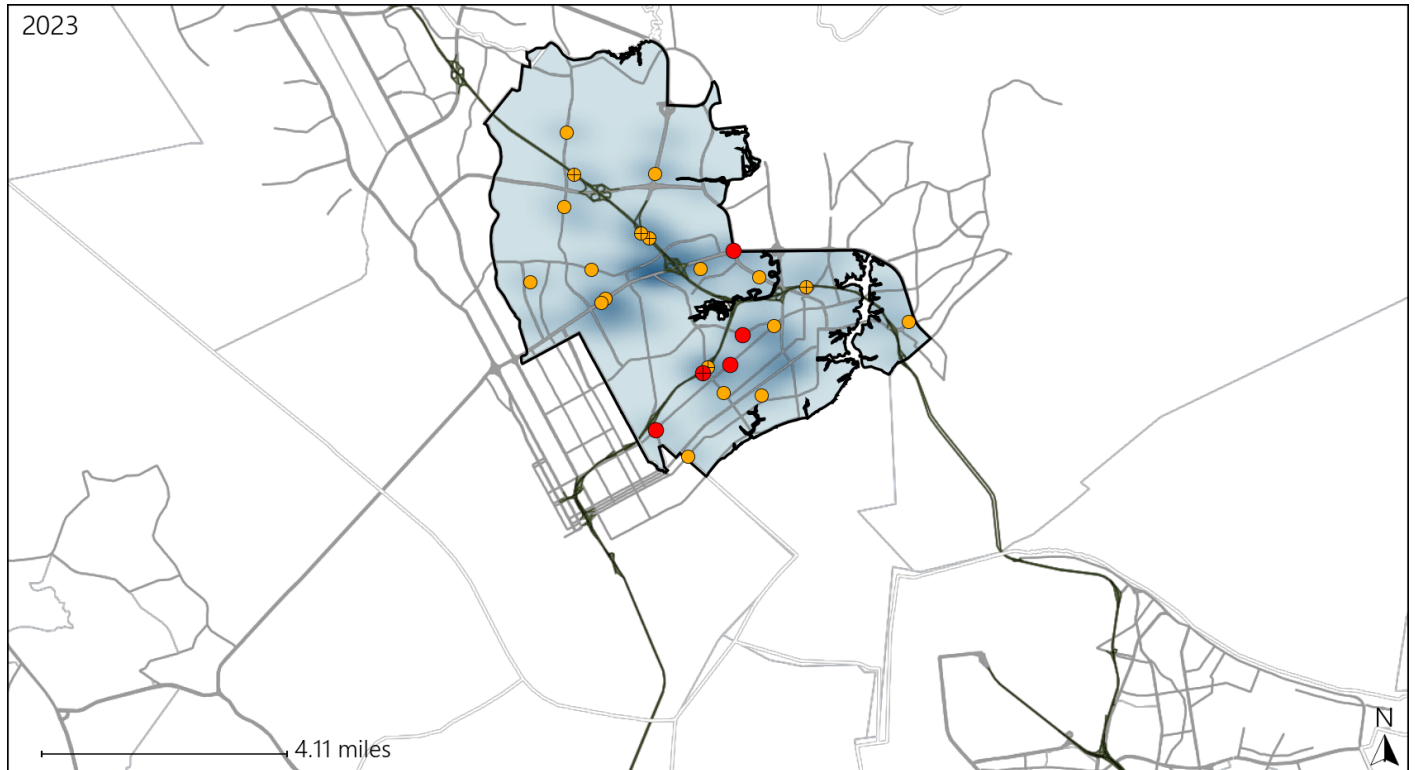


Available Crash Data - Calendar Year (CY)	CY 2020	CY 2021	CY 2022	CY 2023
Total Crashes	2386	2504	2511	2537
Fatal Crashes	14	10	10	16
Injury Crashes	1400	1576	1550	1562
Speed-Related Fatal Crashes	12	8	5	8
Percent of Speed-Related Fatal Crashes to Total Fatal Crashes	86%	80%	50%	50%
Speed-Related Injury Crashes	208	204	196	219
Percent of Speed-Related Injury Crashes to Total Injury Crashes	15%	13%	13%	14%

Virginia House District 87 Unrestrained Crash Statistics

Report Generated May, 2024

	Count	Highest Time Period(s)	Highest Day(s)	Highest Month(s)
Fatal Crashes	5	3:00pm - 5:59pm	Wednesday	April • February
Unrestrained Fatalities	6	(60%)	(40%)	(40%)
Serious Injury Crashes	19	6:00pm - 8:59pm	Tuesday • Wednesday	July
		(37%)	(52%)	(21%)



House District 87 Unrestrained-Related Crashes

Interstate Crashes

- Fatal
- Serious Injury

Non-interstate Crashes

- Fatal
- Serious Injury

The blue gradient represents the density of all unrestrained-related crashes.

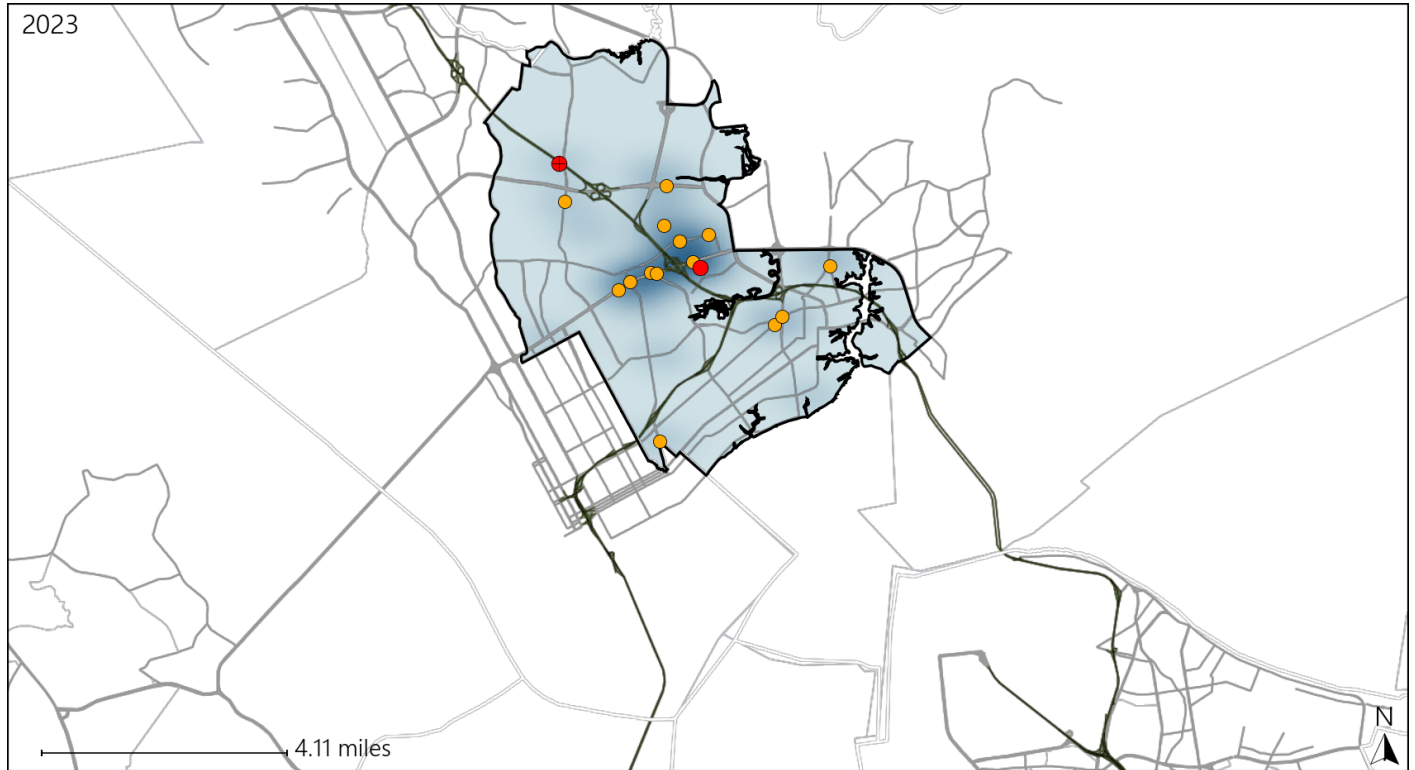


Available Crash Data - Calendar Year (CY)	CY 2020	CY 2021	CY 2022	CY 2023
Total Crashes	2386	2504	2511	2537
Fatalities	15	10	10	17
Injuries	2442	2717	2770	2789
Unrestrained Fatalities	9	2	3	6
Percent of Unrestrained Fatalities to Total Fatalities	60%	20%	30%	35%
Unrestrained Injuries	76	61	75	73
Percent of Unrestrained Injuries to Total Injuries	3%	2%	3%	3%

Virginia House District 87 Pedestrian Crash Statistics

Report Generated May, 2024

	Count	Highest Time Period(s)	Highest Day(s)	Highest Month(s)
Fatal Crashes	2	9:00pm - 11:59pm	Sunday	April • October
Pedestrian Fatalities	2	Midnight - 2:59am (100%)	(100%)	(100%)
Serious Injury Crashes	14	3:00pm - 5:59pm (36%)	Saturday (36%)	December (29%)



House District 87 Pedestrian-Related Crashes

Interstate Crashes

Non-interstate Crashes

● Fatal

● Fatal

● Serious Injury

● Serious Injury

The blue gradient represents the density of all pedestrian-related crashes.

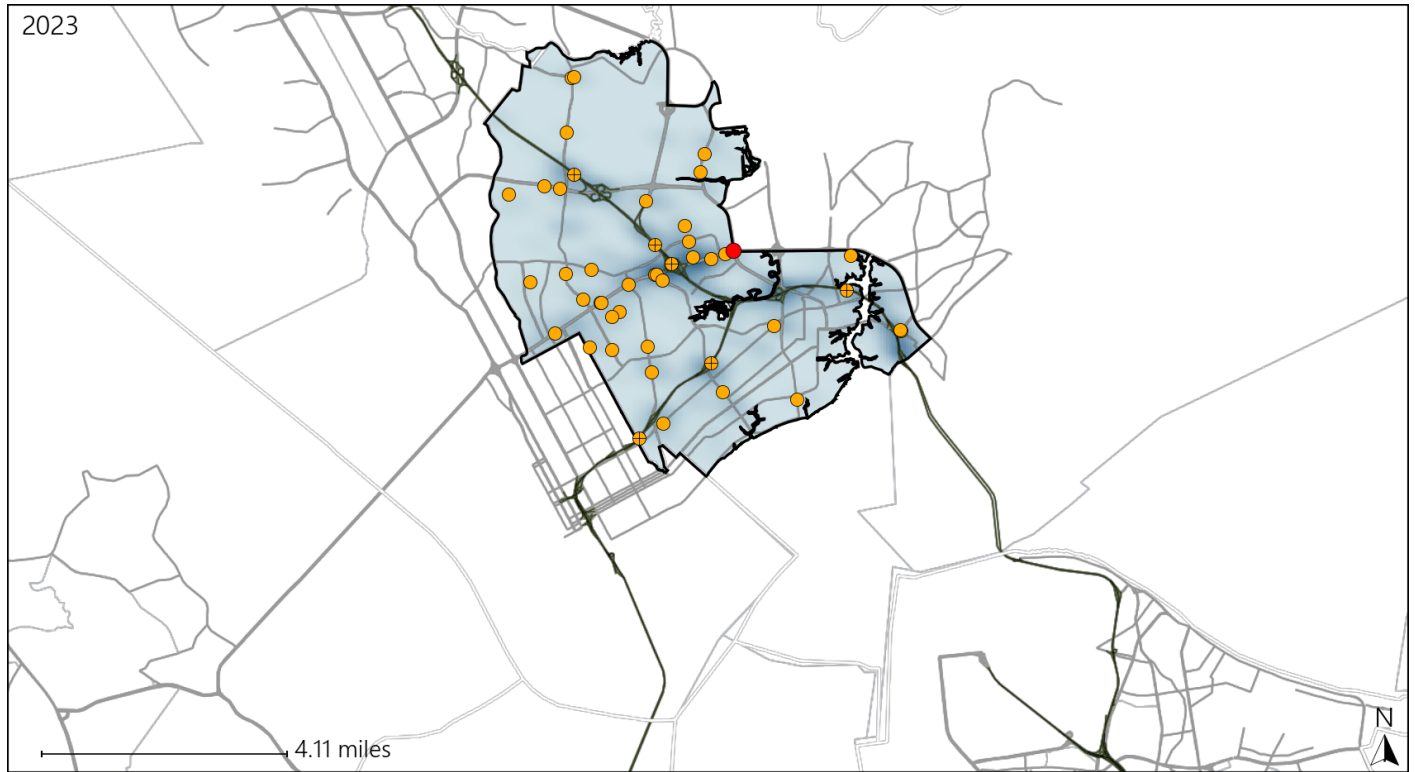


Available Crash Data - Calendar Year (CY)	CY 2020	CY 2021	CY 2022	CY 2023
Total Crashes	2386	2504	2511	2537
Fatal Crashes	14	10	10	16
Injury Crashes	1400	1576	1550	1562
Pedestrian-Related Fatal Crashes	1	1	4	2
Percent of Pedestrian-Related Fatal Crashes to Total Fatal Crashes	7%	10%	40%	13%
Pedestrian-Related Injury Crashes	26	31	22	28
Percent of Pedestrian-Related Injury Crashes to Total Injury Crashes	2%	2%	1%	2%

Virginia House District 87 Distracted Driving Crash Statistics

Report Generated May, 2024

	Count	Highest Time Period(s)	Highest Day(s)	Highest Month(s)
Fatal Crashes	1	Noon - 2:59pm	Wednesday	April
Resulting Fatalities	1	(100%)	(100%)	(100%)
Serious Injury Crashes	44	3:00pm - 5:59pm	Wednesday	February
		(30%)	(27%)	(18%)



House District 87 Distracted Driving-Related Crashes

- | | |
|--|--|
| Interstate Crashes | Non-interstate Crashes |
|  Fatal |  Fatal |
|  Serious Injury |  Serious Injury |

The blue gradient represents the density of all distracted driving-related crashes.



Available Crash Data - Calendar Year (CY)	CY 2020	CY 2021	CY 2022	CY 2023
Total Crashes	2386	2504	2511	2537
Fatal Crashes	14	10	10	16
Injury Crashes	1400	1576	1550	1562
Distracted Driving-Related Fatal Crashes	1	0	2	1
Percent of Distracted Driving-Related Fatal Crashes to Total Fatal Crashes	7%	0%	20%	6%
Distracted Driving-Related Injury Crashes	193	211	209	247
Percent of Distracted Driving-Related Injury Crashes to Total Injury Crashes	14%	13%	13%	16%