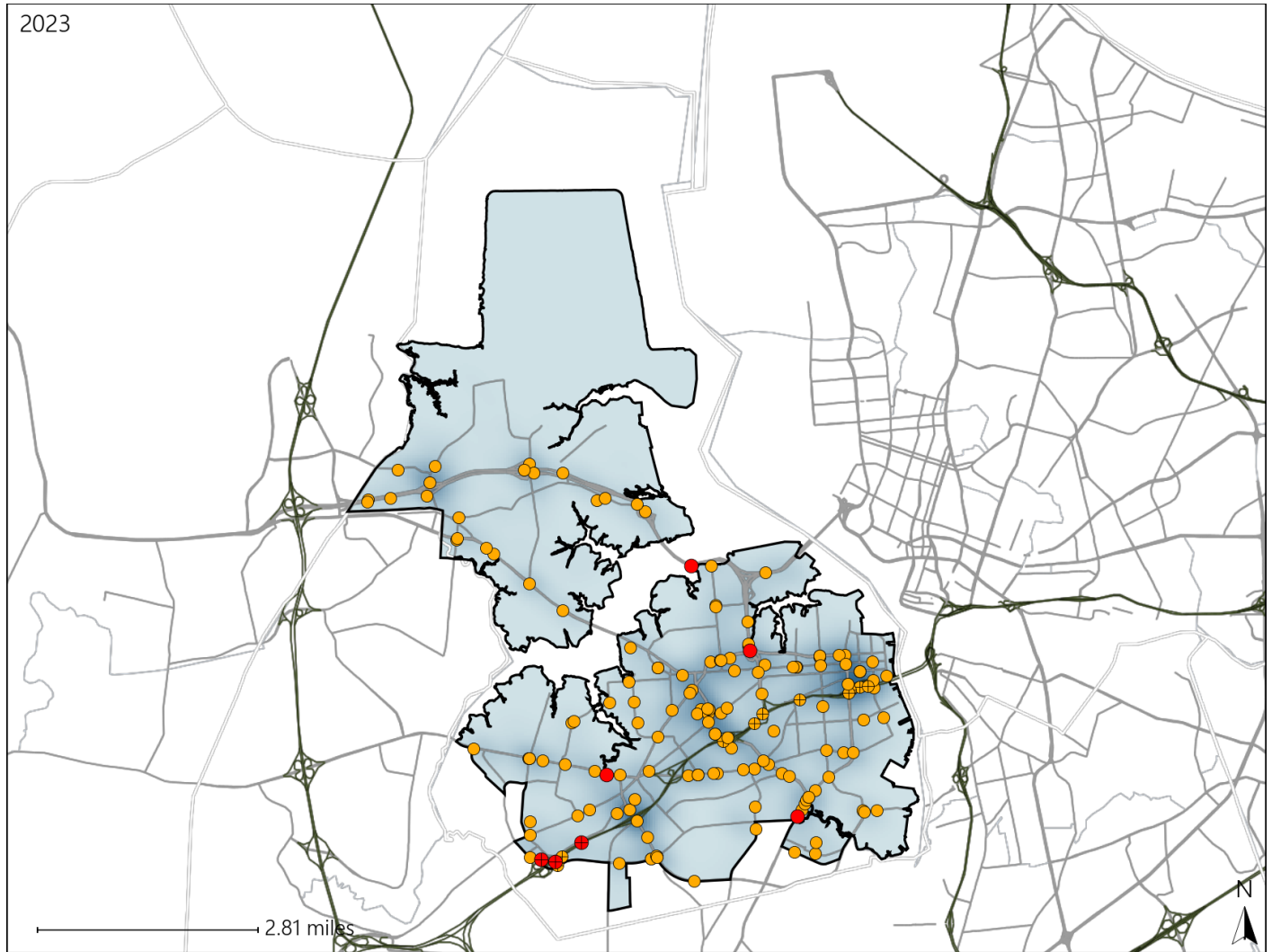


Virginia House District 88 Crash Statistics

Report Generated May, 2024

	Count	Highest Time Period(s)	Highest Day(s)	Highest Month(s)
Fatal Crashes	7	6:00am - 8:59am	Thursday • Tuesday	December
Resulting Fatalities	8	(29%)	(58%)	(43%)
Serious Injury Crashes	152	3:00pm - 5:59pm	Sunday	June
		(18%)	(18%)	(12%)



House District 88 Crashes

Interstate Crashes

- Fatal
- Serious Injury

Non-interstate Crashes

- Fatal
- Serious Injury

The blue gradient represents the density of all crashes.

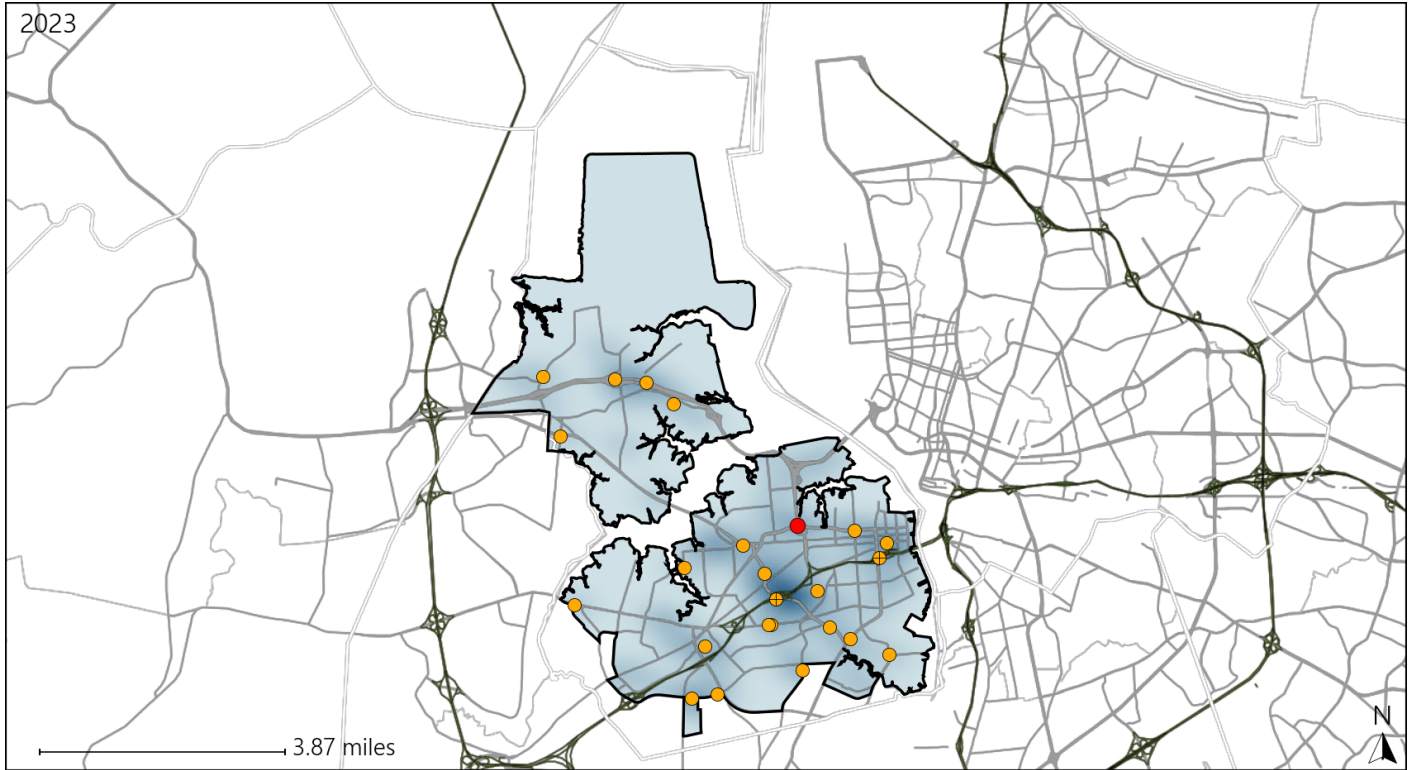


Available Crash Data - Calendar Year (CY)	CY 2020	CY 2021	CY 2022	CY 2023
Total Crashes	1155	1348	1150	1285
Fatal Crashes	2	11	11	7
Injury Crashes	602	649	553	642

Virginia House District 88 Alcohol Crash Statistics

Report Generated May, 2024

	Count	Highest Time Period(s)	Highest Day(s)	Highest Month(s)
Fatal Crashes	1	9:00pm - 11:59pm	Thursday	September
Resulting Fatalities	1	(100%)	(100%)	(100%)
Serious Injury Crashes	23	Midnight - 2:59am	Sunday	August
		(35%)	(26%)	(22%)



House District 88 Alcohol-Related Crashes

Interstate Crashes Non-interstate Crashes
 ● Fatal ● Fatal
 ⊕ Serious Injury ⊕ Serious Injury

The blue gradient represents the density of all alcohol-related crashes.

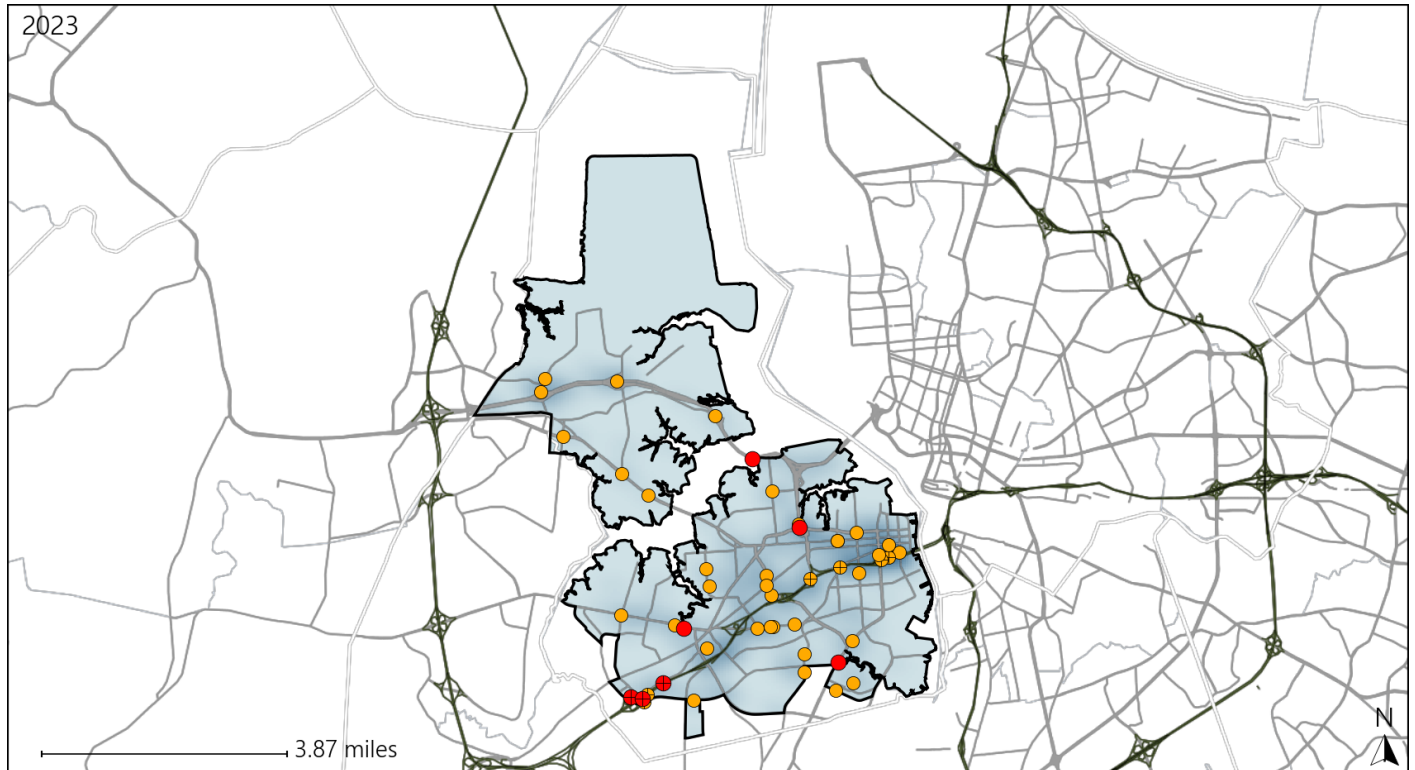


Available Crash Data - Calendar Year (CY)	CY 2020	CY 2021	CY 2022	CY 2023
Total Crashes	1155	1348	1150	1285
Fatal Crashes	2	11	11	7
Injury Crashes	602	649	553	642
Alcohol-Related Fatal Crashes	1	1	4	1
Percent of Alcohol-Related Fatal Crashes to Total Fatal Crashes	50%	9%	36%	14%
Alcohol-Related Injury Crashes	40	54	35	53
Percent of Alcohol-Related Injury Crashes to Total Injury Crashes	7%	8%	6%	8%

Virginia House District 88 Speed Crash Statistics

Report Generated May, 2024

	Count	Highest Time Period(s)	Highest Day(s)	Highest Month(s)
Fatal Crashes	7	6:00am - 8:59am	Thursday • Tuesday	December
Resulting Fatalities	8	(29%)	(58%)	(43%)
Serious Injury Crashes	41	3:00pm - 5:59pm	Friday	March
		(20%)	(24%)	(15%)



House District 88 Speed-Related Crashes

Interstate Crashes Non-interstate Crashes
 ● Fatal ● Fatal
 ● Serious Injury ● Serious Injury

The blue gradient represents the density of all speed-related crashes.

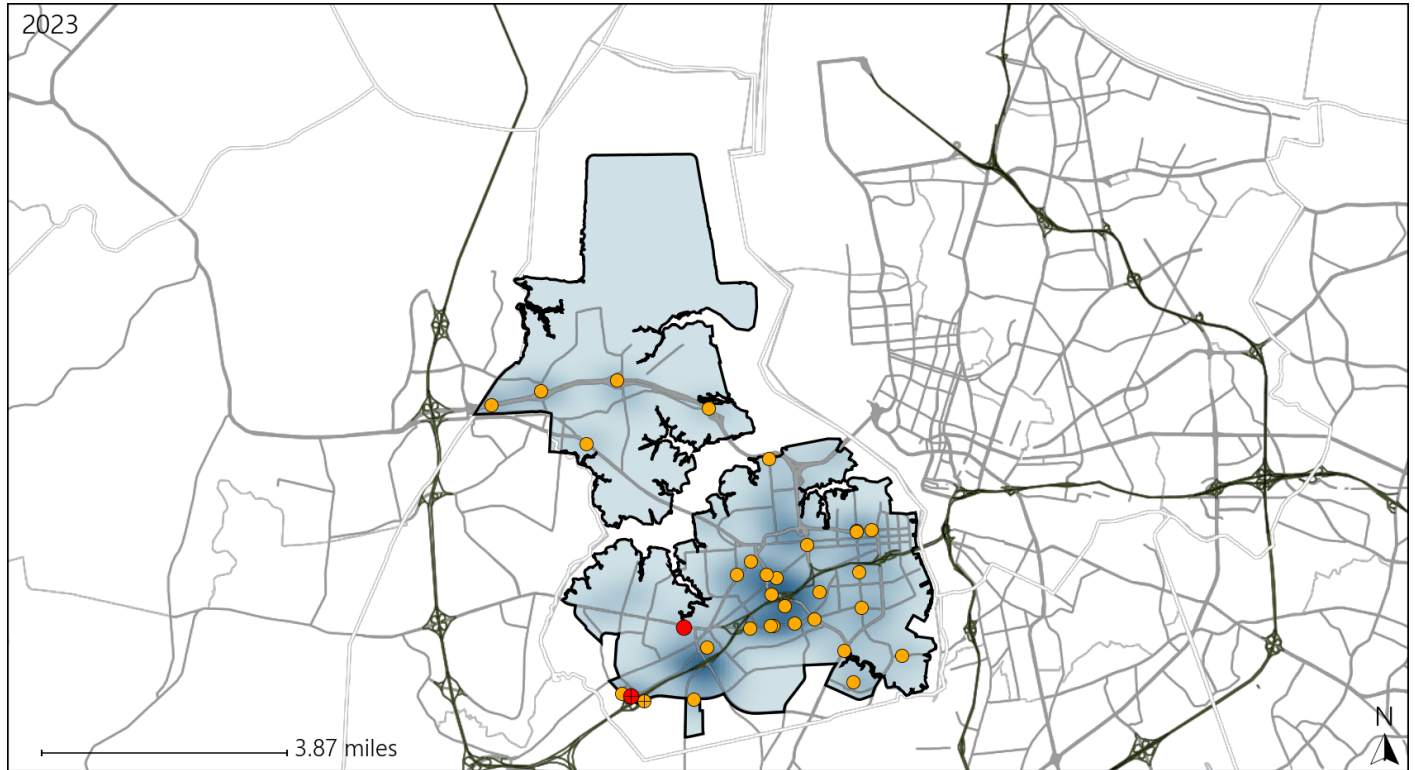


Available Crash Data - Calendar Year (CY)	CY 2020	CY 2021	CY 2022	CY 2023
Total Crashes	1155	1348	1150	1285
Fatal Crashes	2	11	11	7
Injury Crashes	602	649	553	642
Speed-Related Fatal Crashes	1	6	1	7
Percent of Speed-Related Fatal Crashes to Total Fatal Crashes	50%	55%	9%	100%
Speed-Related Injury Crashes	117	152	122	132
Percent of Speed-Related Injury Crashes to Total Injury Crashes	19%	23%	22%	21%

Virginia House District 88 Unrestrained Crash Statistics

Report Generated May, 2024

	Count	Highest Time Period(s)	Highest Day(s)	Highest Month(s)
Fatal Crashes	2	3:00pm - 5:59pm	Friday • Tuesday	December • February
Unrestrained Fatalities	2	Noon - 2:59pm (100%)	(100%)	(100%)
Serious Injury Crashes	31	Midnight - 2:59am (23%)	Saturday (29%)	June (19%)



House District 88 Unrestrained-Related Crashes

- | | |
|--|--|
| Interstate Crashes | Non-interstate Crashes |
| ● Fatal | ● Fatal |
| ● Serious Injury | ● Serious Injury |

The blue gradient represents the density of all unrestrained-related crashes.

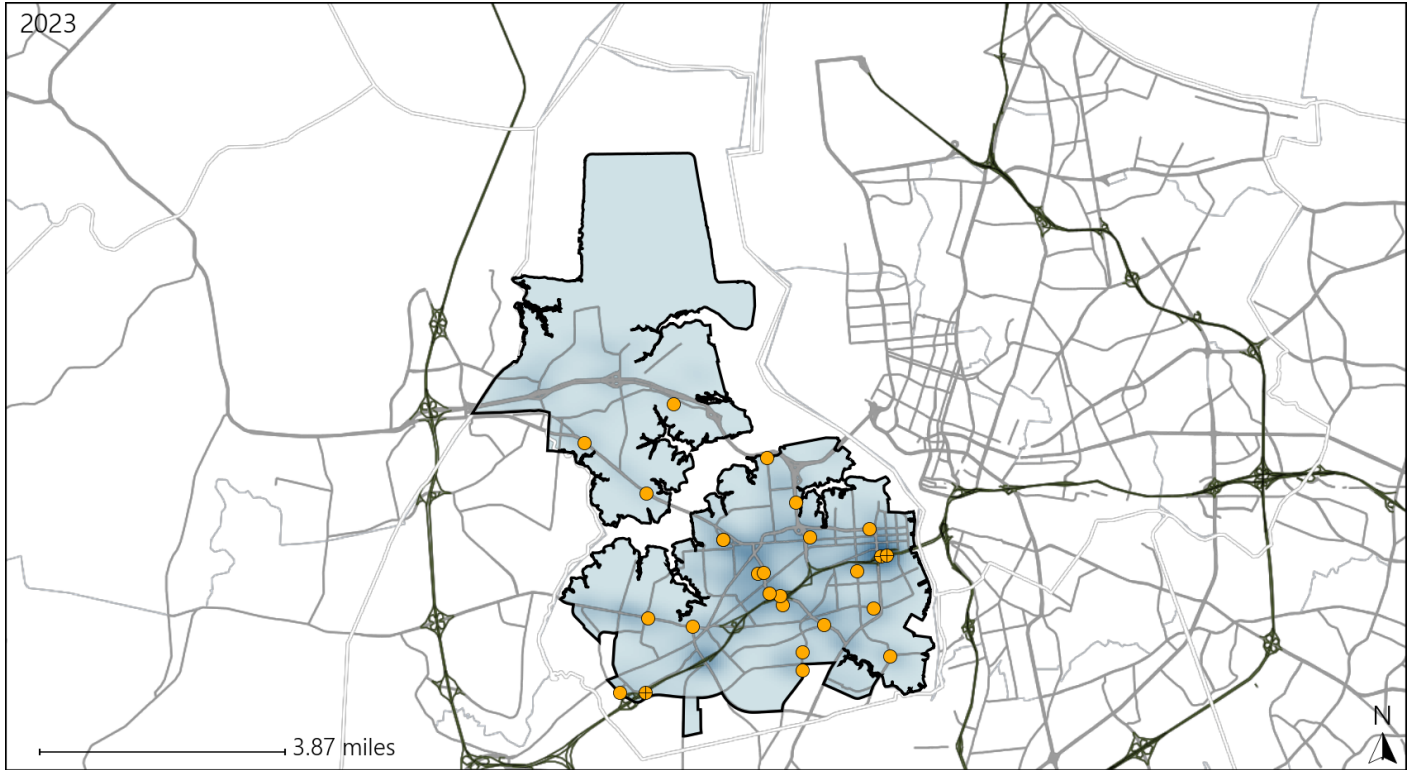


Available Crash Data - Calendar Year (CY)	CY 2020	CY 2021	CY 2022	CY 2023
Total Crashes	1155	1348	1150	1285
Fatalities	2	12	12	8
Injuries	872	955	807	957
Unrestrained Fatalities	1	3	4	2
Percent of Unrestrained Fatalities to Total Fatalities	50%	25%	33%	25%
Unrestrained Injuries	63	71	40	79
Percent of Unrestrained Injuries to Total Injuries	7%	7%	5%	8%

Virginia House District 88 Distracted Driving Crash Statistics

Report Generated May, 2024

	Count	Highest Time Period(s)	Highest Day(s)	Highest Month(s)
Fatal Crashes	0	-	-	-
Resulting Fatalities	0	-	-	-
Serious Injury Crashes	26	Noon - 2:59pm (27%)	Thursday (27%)	March - October (30%)



House District 88 Distracted Driving-Related Crashes

- | | |
|--------------------|------------------------|
| Interstate Crashes | Non-interstate Crashes |
| ● Fatal | ● Fatal |
| ● Serious Injury | ● Serious Injury |

The blue gradient represents the density of all distracted driving-related crashes.



Available Crash Data - Calendar Year (CY)	CY 2020	CY 2021	CY 2022	CY 2023
Total Crashes	1155	1348	1150	1285
Fatal Crashes	2	11	11	7
Injury Crashes	602	649	553	642
Distracted Driving-Related Fatal Crashes	2	2	1	0
Percent of Distracted Driving-Related Fatal Crashes to Total Fatal Crashes	100%	18%	9%	0%
Distracted Driving-Related Injury Crashes	116	94	72	131
Percent of Distracted Driving-Related Injury Crashes to Total Injury Crashes	19%	14%	13%	20%