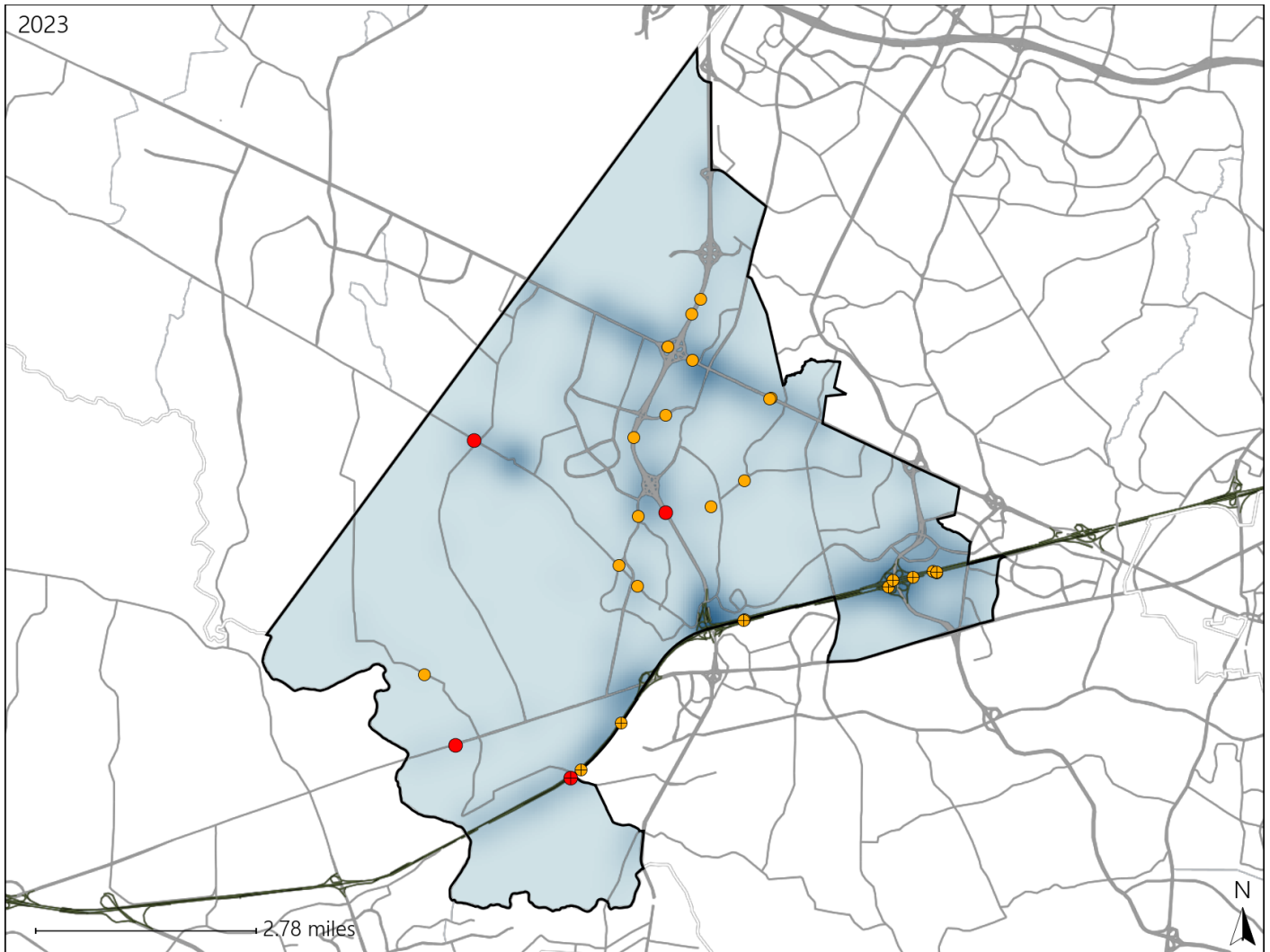


Virginia House District 9 Crash Statistics

Report Generated May, 2024

	Count	Highest Time Period(s)	Highest Day(s)	Highest Month(s)
Fatal Crashes	4	9:00pm - 11:59pm	Friday • Saturday	April • November
Resulting Fatalities	4	(50%)	(50%)	(100%)
Serious Injury Crashes	24	3:00pm - 5:59pm 6:00pm - 8:59pm	Saturday	March
		(50%)	(25%)	(17%)



House District 9 Crashes

Interstate Crashes

- Fatal
- ⊕ Serious Injury

Non-interstate Crashes

- Fatal
- Serious Injury

The blue gradient represents the density of all crashes.

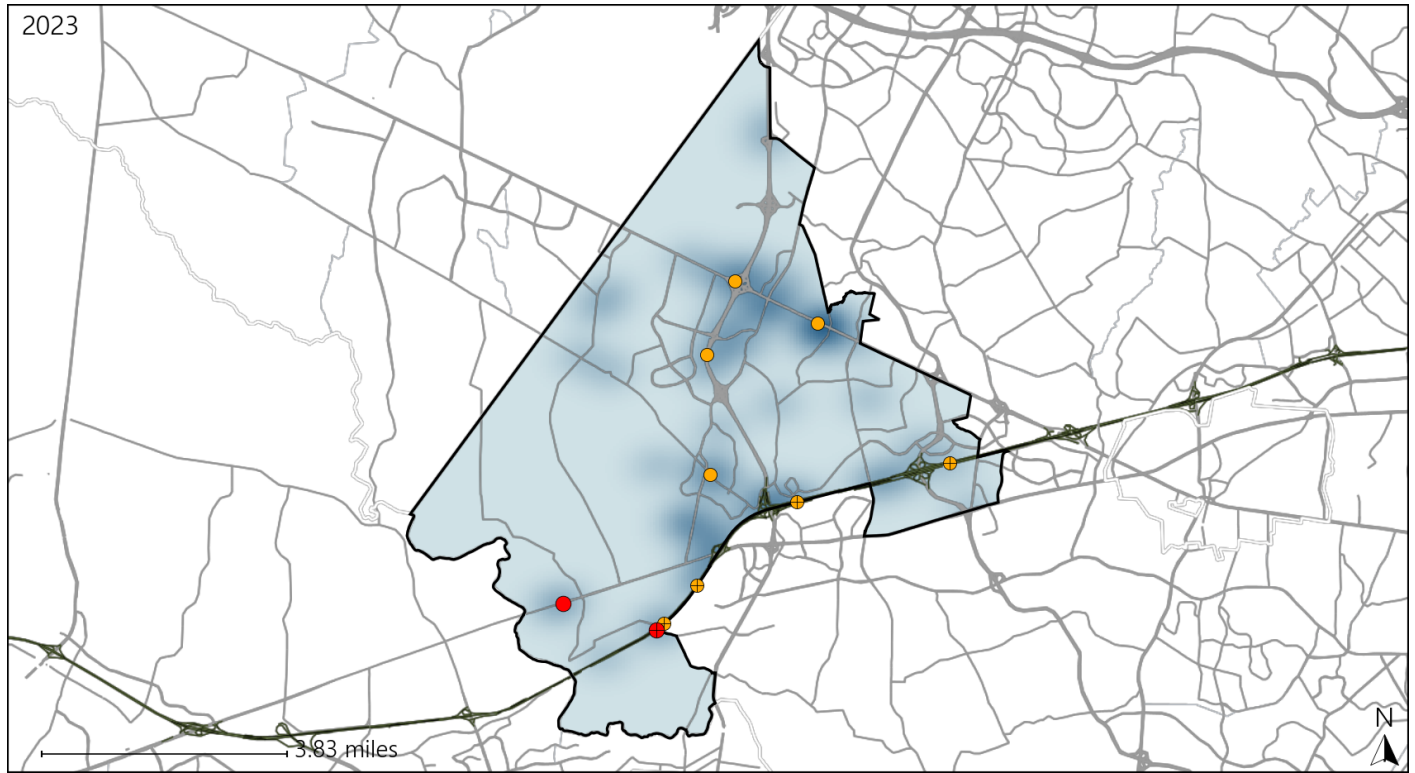


Available Crash Data - Calendar Year (CY)	CY 2020	CY 2021	CY 2022	CY 2023
Total Crashes	919	1055	1148	1200
Fatal Crashes	4	4	1	4
Injury Crashes	229	281	247	319

Virginia House District 9 Alcohol Crash Statistics

Report Generated May, 2024

	Count	Highest Time Period(s)	Highest Day(s)	Highest Month(s)
Fatal Crashes	2	9:00pm - 11:59pm	Friday • Saturday	April
Resulting Fatalities	2	Midnight - 2:59am (100%)	(100%)	(100%)
Serious Injury Crashes	8	3:00am - 5:59am 6:00pm - 8:59pm (50%)	Sunday (38%)	March (25%)



House District 9 Alcohol-Related Crashes

Interstate Crashes Non-interstate Crashes
 ● Fatal ● Fatal
 ⊕ Serious Injury ⊕ Serious Injury

The blue gradient represents the density of all alcohol-related crashes.

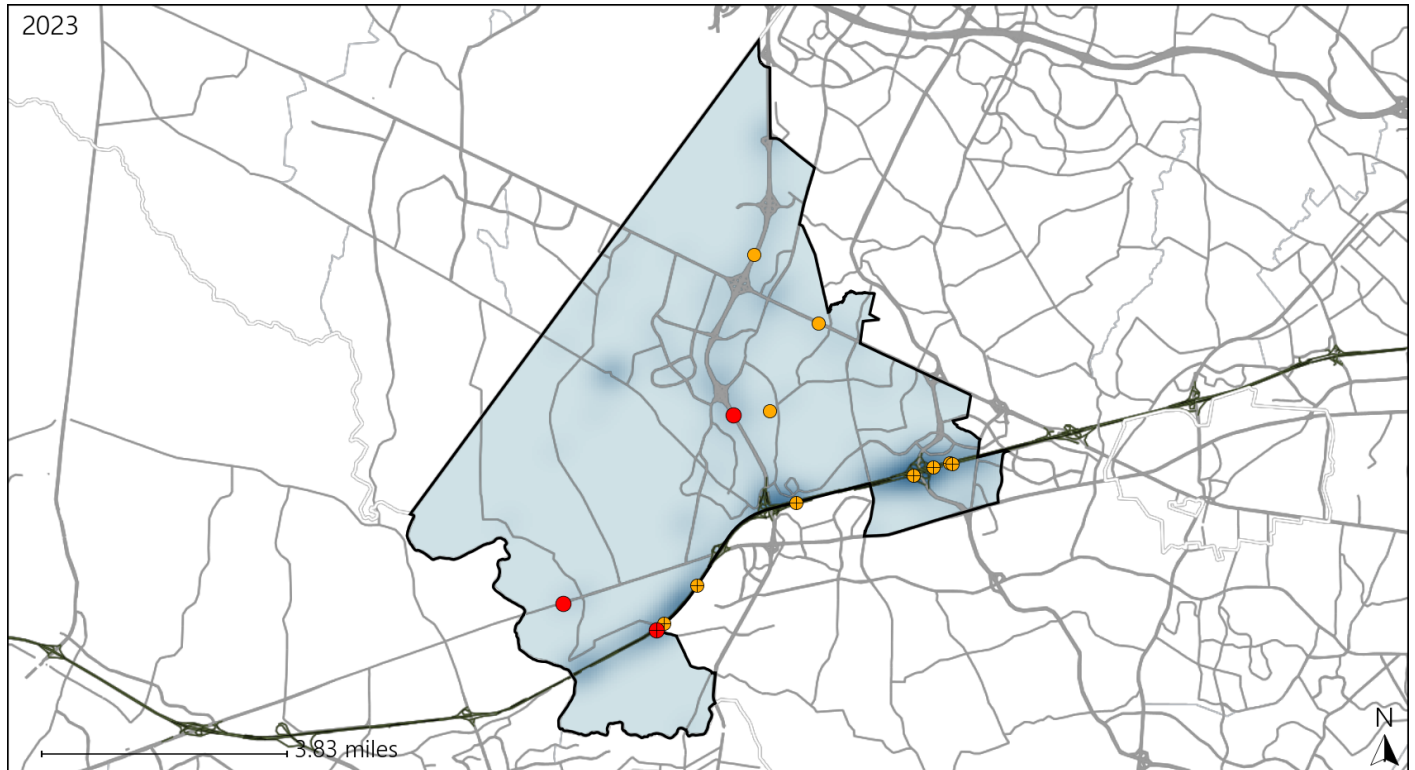


Available Crash Data - Calendar Year (CY)	CY 2020	CY 2021	CY 2022	CY 2023
Total Crashes	919	1055	1148	1200
Fatal Crashes	4	4	1	4
Injury Crashes	229	281	247	319
Alcohol-Related Fatal Crashes	2	1	0	2
Percent of Alcohol-Related Fatal Crashes to Total Fatal Crashes	50%	25%	0%	50%
Alcohol-Related Injury Crashes	14	23	20	22
Percent of Alcohol-Related Injury Crashes to Total Injury Crashes	6%	8%	8%	7%

Virginia House District 9 Speed Crash Statistics

Report Generated May, 2024

	Count	Highest Time Period(s)	Highest Day(s)	Highest Month(s)
Fatal Crashes	3	9:00pm - 11:59pm	Friday • Saturday	April
Resulting Fatalities	3	(67%)	(66%)	(67%)
Serious Injury Crashes	10	6:00pm - 8:59pm	Thursday	February • May
		(40%)	(40%)	(40%)



House District 9 Speed-Related Crashes

Interstate Crashes Non-interstate Crashes
 ● Fatal ● Fatal
 ⊕ Serious Injury ⊕ Serious Injury

The blue gradient represents the density of all speed-related crashes.

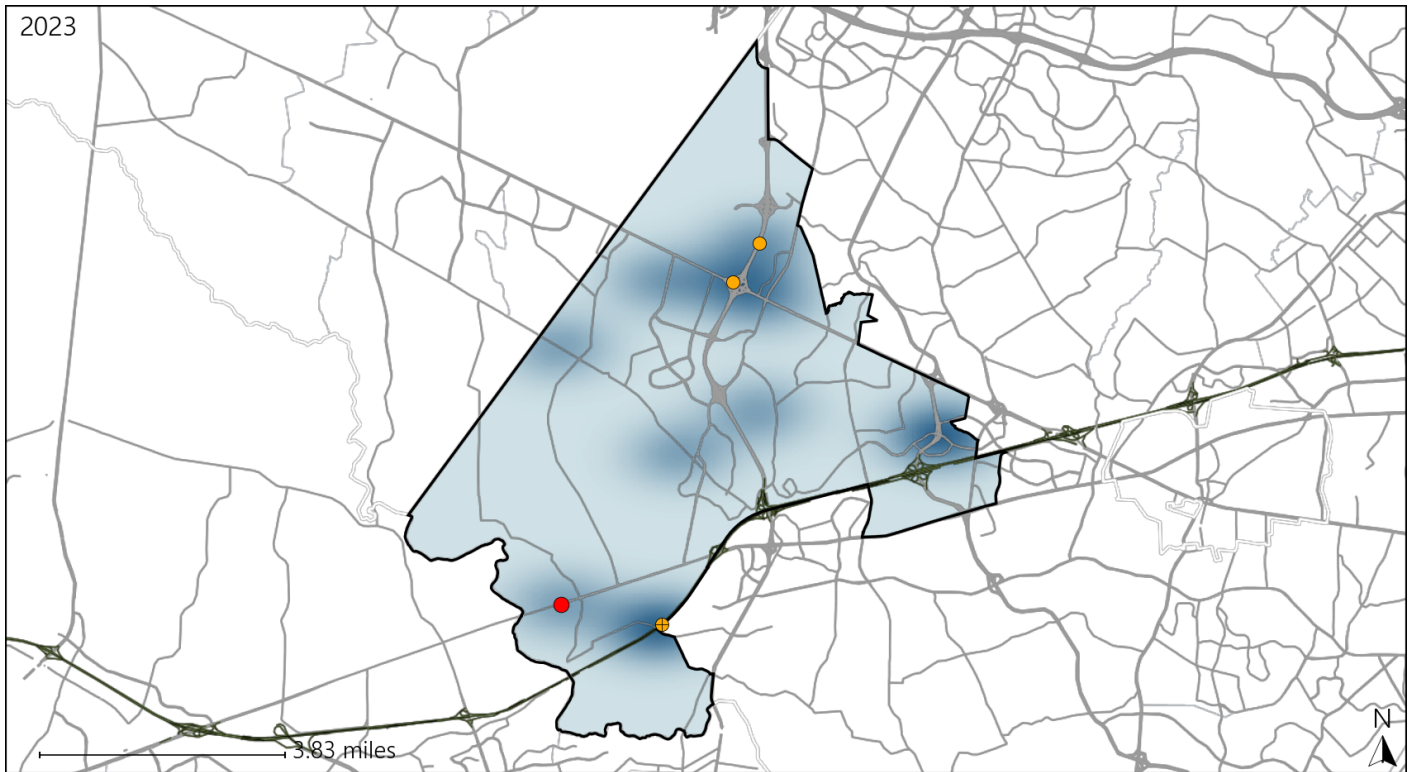


Available Crash Data - Calendar Year (CY)	CY 2020	CY 2021	CY 2022	CY 2023
Total Crashes	919	1055	1148	1200
Fatal Crashes	4	4	1	4
Injury Crashes	229	281	247	319
Speed-Related Fatal Crashes	3	3	0	3
Percent of Speed-Related Fatal Crashes to Total Fatal Crashes	75%	75%	0%	75%
Speed-Related Injury Crashes	53	72	55	77
Percent of Speed-Related Injury Crashes to Total Injury Crashes	23%	26%	22%	24%

Virginia House District 9 Unrestrained Crash Statistics

Report Generated May, 2024

	Count	Highest Time Period(s)	Highest Day(s)	Highest Month(s)
Fatal Crashes	1	Midnight - 2:59am	Saturday	April
Unrestrained Fatalities	1	(100%)	(100%)	(100%)
Serious Injury Crashes	3	3:00pm - 5:59pm 6:00pm - 8:59pm	Friday • Monday	December • March
		(66%)	(66%)	(66%)



House District 9 Unrestrained-Related Crashes

- | | |
|--------------------|------------------------|
| Interstate Crashes | Non-interstate Crashes |
| ● Fatal | ● Fatal |
| ⊕ Serious Injury | ⊕ Serious Injury |

The blue gradient represents the density of all unrestrained-related crashes.

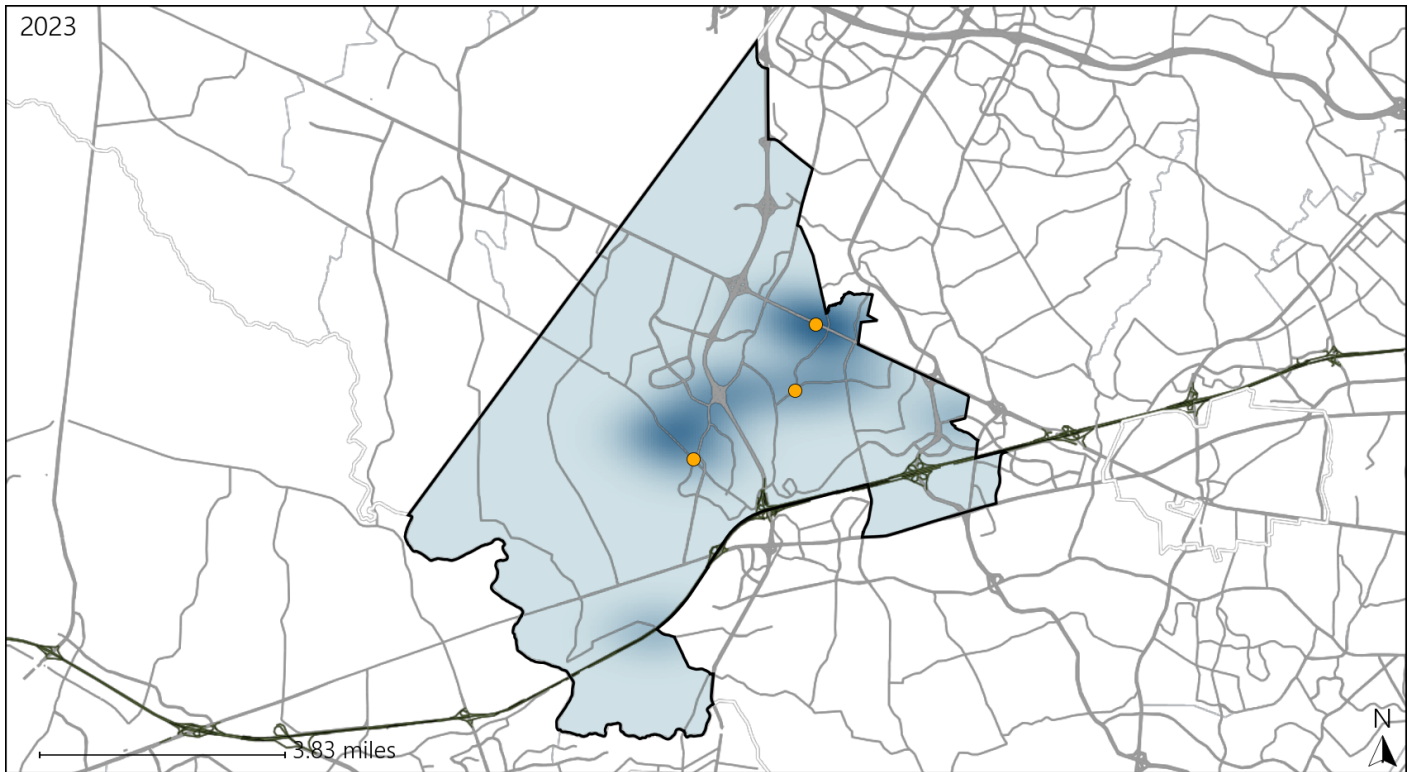


Available Crash Data - Calendar Year (CY)	CY 2020	CY 2021	CY 2022	CY 2023
Total Crashes	919	1055	1148	1200
Fatalities	4	4	1	4
Injuries	342	448	375	515
Unrestrained Fatalities	0	1	1	1
Percent of Unrestrained Fatalities to Total Fatalities	0%	25%	100%	25%
Unrestrained Injuries	9	8	10	13
Percent of Unrestrained Injuries to Total Injuries	3%	2%	3%	3%

Virginia House District 9 Pedestrian Crash Statistics

Report Generated May, 2024

	Count	Highest Time Period(s)	Highest Day(s)	Highest Month(s)
Fatal Crashes	0	-	-	-
Pedestrian Fatalities	0	-	-	-
Serious Injury Crashes	3	3:00pm - 5:59pm 6:00am - 8:59am (66%)	Saturday • Sunday (66%)	April • August (66%)



House District 9 Pedestrian-Related Crashes

- | | |
|--------------------|------------------------|
| Interstate Crashes | Non-interstate Crashes |
| ● Fatal | ● Fatal |
| ⊕ Serious Injury | ● Serious Injury |

The blue gradient represents the density of all pedestrian-related crashes.

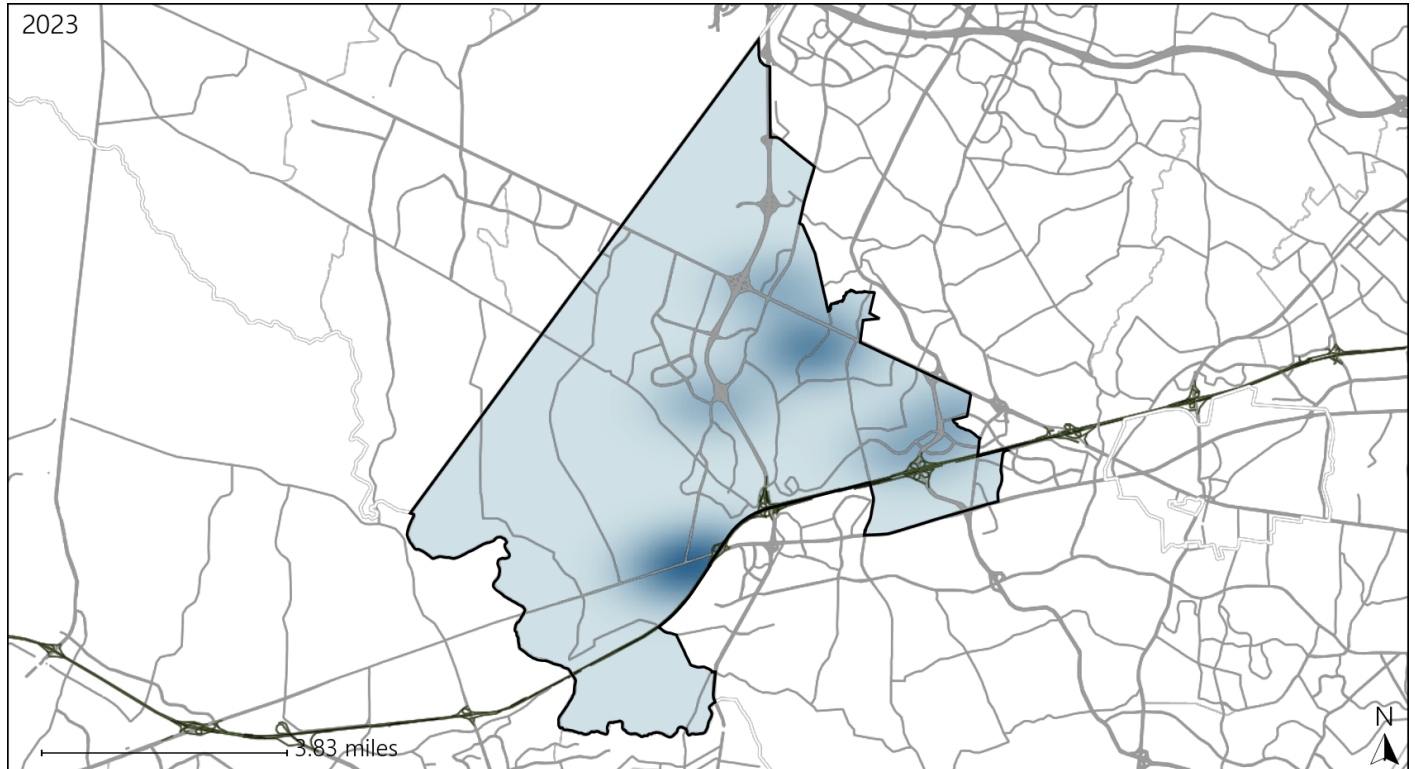


Available Crash Data - Calendar Year (CY)	CY 2020	CY 2021	CY 2022	CY 2023
Total Crashes	919	1055	1148	1200
Fatal Crashes	4	4	1	4
Injury Crashes	229	281	247	319
Pedestrian-Related Fatal Crashes	1	0	0	0
Percent of Pedestrian-Related Fatal Crashes to Total Fatal Crashes	25%	0%	0%	0%
Pedestrian-Related Injury Crashes	6	8	7	13
Percent of Pedestrian-Related Injury Crashes to Total Injury Crashes	3%	3%	3%	4%

Virginia House District 9 Bicycle Crash Statistics

Report Generated May, 2024

	Count	Highest Time Period(s)	Highest Day(s)	Highest Month(s)
Fatal Crashes	0	-	-	-
Bicycle Fatalities	0	-	-	-
Serious Injury Crashes	0	-	-	-



House District 9 Bicycle-Related Crashes

Interstate Crashes Non-interstate Crashes
 ● Fatal ● Fatal
 ⊕ Serious Injury ⊕ Serious Injury

The blue gradient represents the density of all bicycle-related crashes.

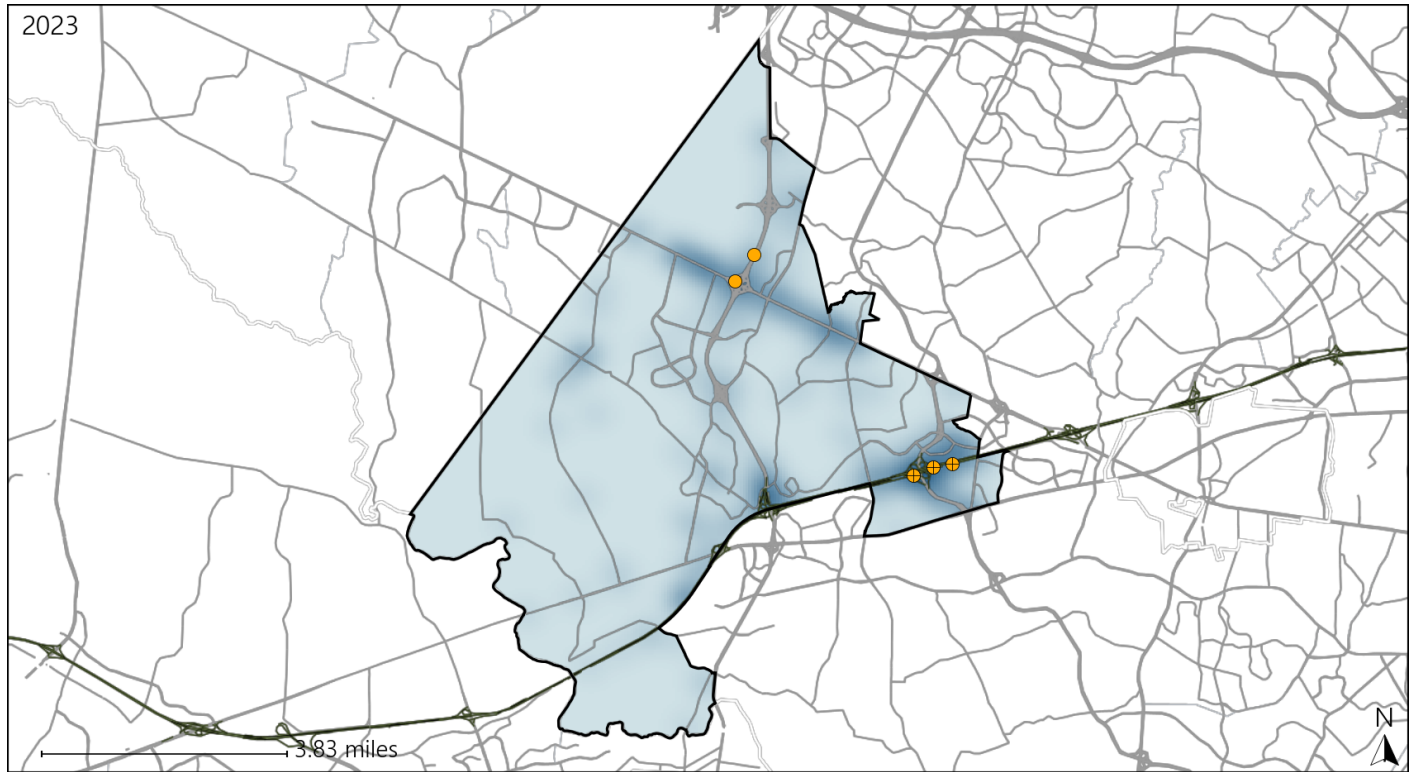


Available Crash Data - Calendar Year (CY)	CY 2020	CY 2021	CY 2022	CY 2023
Total Crashes	919	1055	1148	1200
Fatal Crashes	4	4	1	4
Injury Crashes	229	281	247	319
Bicycle-Related Fatal Crashes	0	1	0	0
Percent of Bicycle-Related Fatal Crashes to Total Fatal Crashes	0%	25%	0%	0%
Bicycle-Related Injury Crashes	4	3	8	9
Percent of Bicycle-Related Injury Crashes to Total Injury Crashes	2%	1%	3%	3%

Virginia House District 9 Distracted Driving Crash Statistics

Report Generated May, 2024

	Count	Highest Time Period(s)	Highest Day(s)	Highest Month(s)
Fatal Crashes	0	-	-	-
Resulting Fatalities	0	-	-	-
Serious Injury Crashes	5	6:00pm - 8:59pm (60%)	Thursday (60%)	March (40%)



House District 9 Distracted Driving-Related Crashes

- | | |
|--|--|
| Interstate Crashes | Non-interstate Crashes |
| ● Fatal | ● Fatal |
| ⊕ Serious Injury | ⊕ Serious Injury |

The blue gradient represents the density of all distracted driving-related crashes.



Available Crash Data - Calendar Year (CY)	CY 2020	CY 2021	CY 2022	CY 2023
Total Crashes	919	1055	1148	1200
Fatal Crashes	4	4	1	4
Injury Crashes	229	281	247	319
Distracted Driving-Related Fatal Crashes	2	0	0	0
Percent of Distracted Driving-Related Fatal Crashes to Total Fatal Crashes	50%	0%	0%	0%
Distracted Driving-Related Injury Crashes	41	49	35	50
Percent of Distracted Driving-Related Injury Crashes to Total Injury Crashes	18%	17%	14%	16%