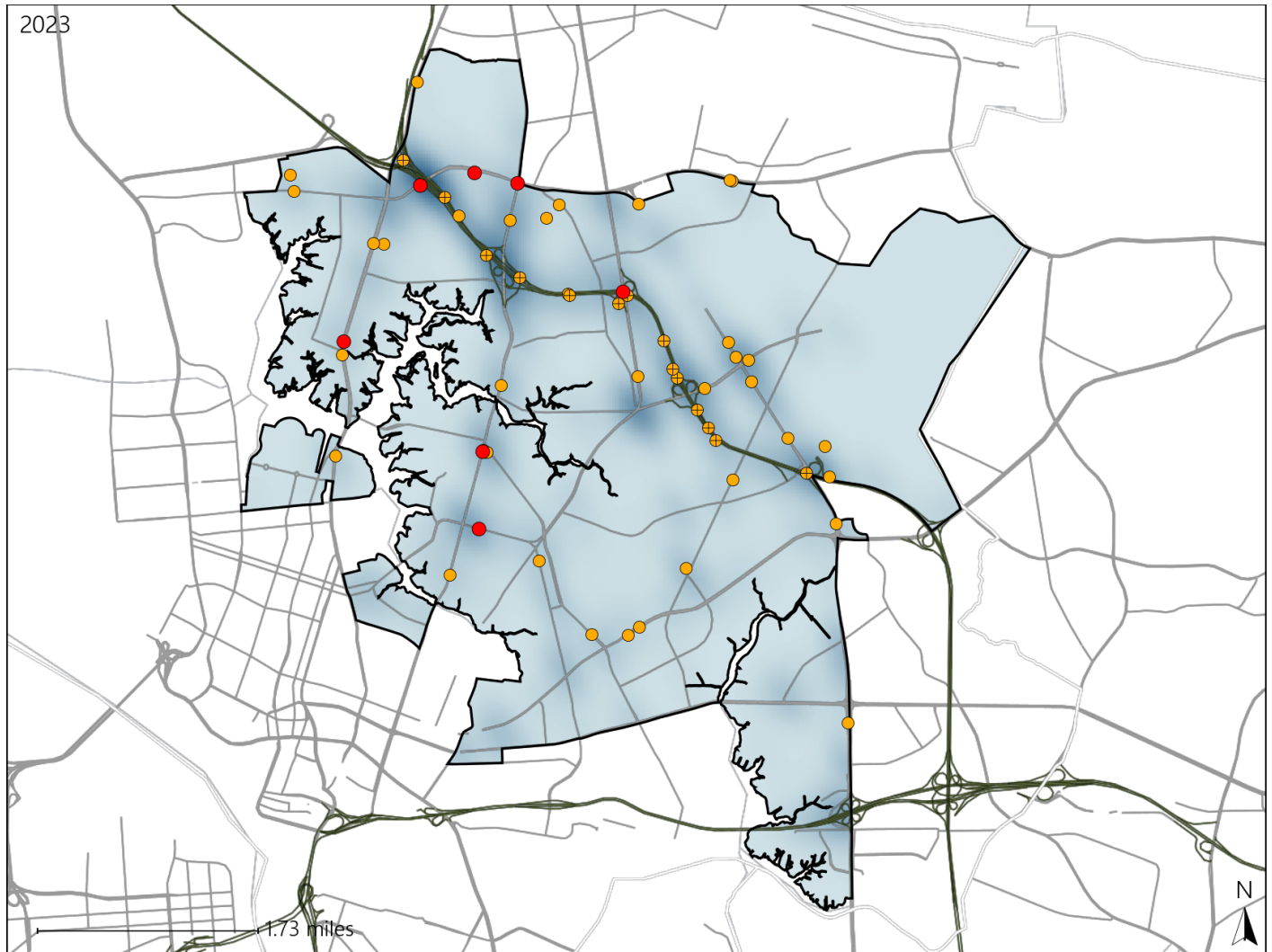


Virginia House District 93 Crash Statistics

Report Generated May, 2024

	Count	Highest Time Period(s)	Highest Day(s)	Highest Month(s)
Fatal Crashes	7	6:00pm - 8:59pm	Sunday • Tuesday	January
Resulting Fatalities	7	9:00pm - 11:59pm (58%)	(58%)	(43%)
Serious Injury Crashes	50	3:00pm - 5:59pm (26%)	Friday • Sunday (48%)	February (16%)



House District 93 Crashes

Interstate Crashes

- Fatal
- Serious Injury

Non-interstate Crashes

- Fatal
- Serious Injury

The blue gradient represents the density of all crashes.

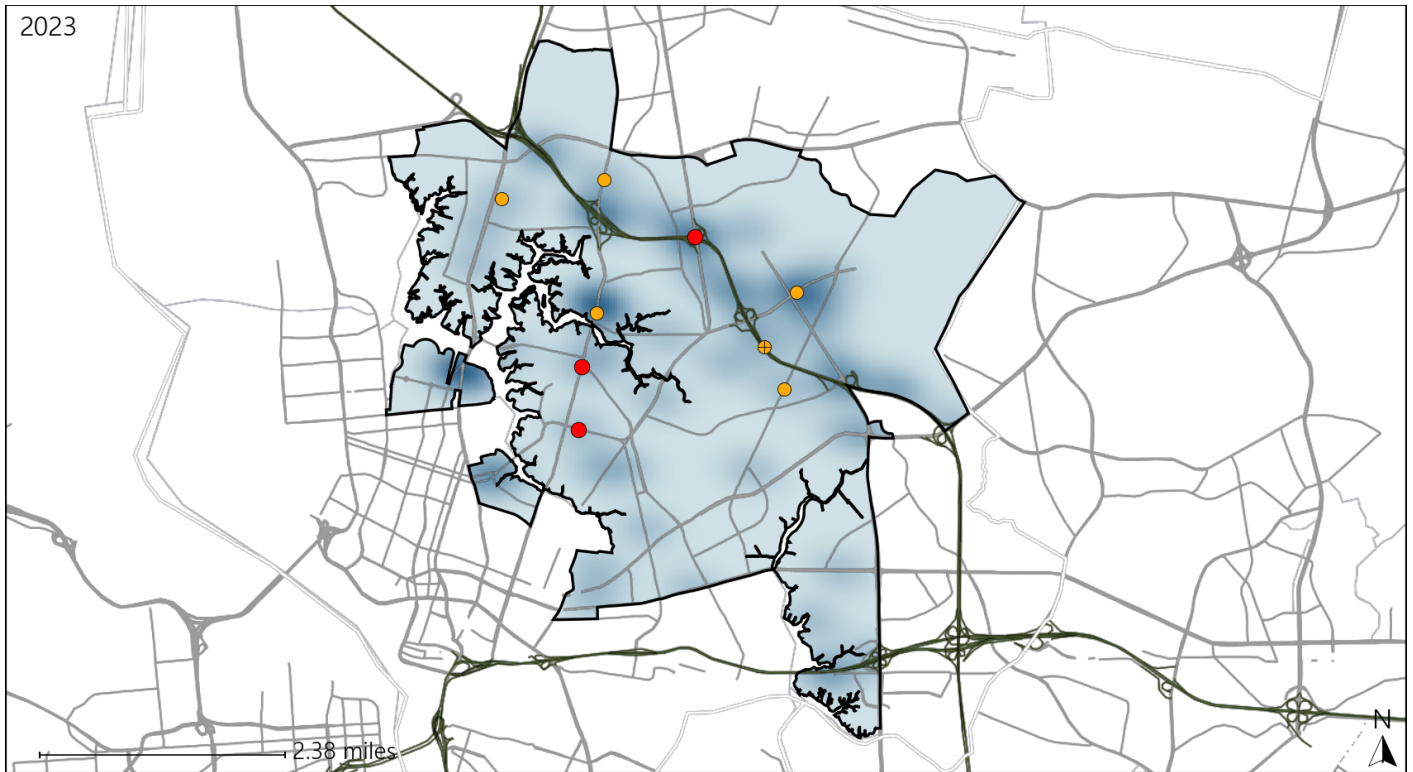


Available Crash Data - Calendar Year (CY)	CY 2020	CY 2021	CY 2022	CY 2023
Total Crashes	1197	1359	1189	1381
Fatal Crashes	12	12	11	7
Injury Crashes	422	462	412	493

Virginia House District 93 Alcohol Crash Statistics

Report Generated May, 2024

	Count	Highest Time Period(s)	Highest Day(s)	Highest Month(s)
Fatal Crashes	3	9:00pm - 11:59pm	Friday • Tuesday	August
Resulting Fatalities	3	(67%)	(66%)	(67%)
Serious Injury Crashes	6	9:00pm - 11:59pm Midnight - 2:59am	Friday • Saturday	January
		(100%)	(66%)	(33%)



House District 93 Alcohol-Related Crashes

Interstate Crashes Non-interstate Crashes
 ● Fatal ● Fatal
 ⊕ Serious Injury ⊕ Serious Injury

The blue gradient represents the density of all alcohol-related crashes.

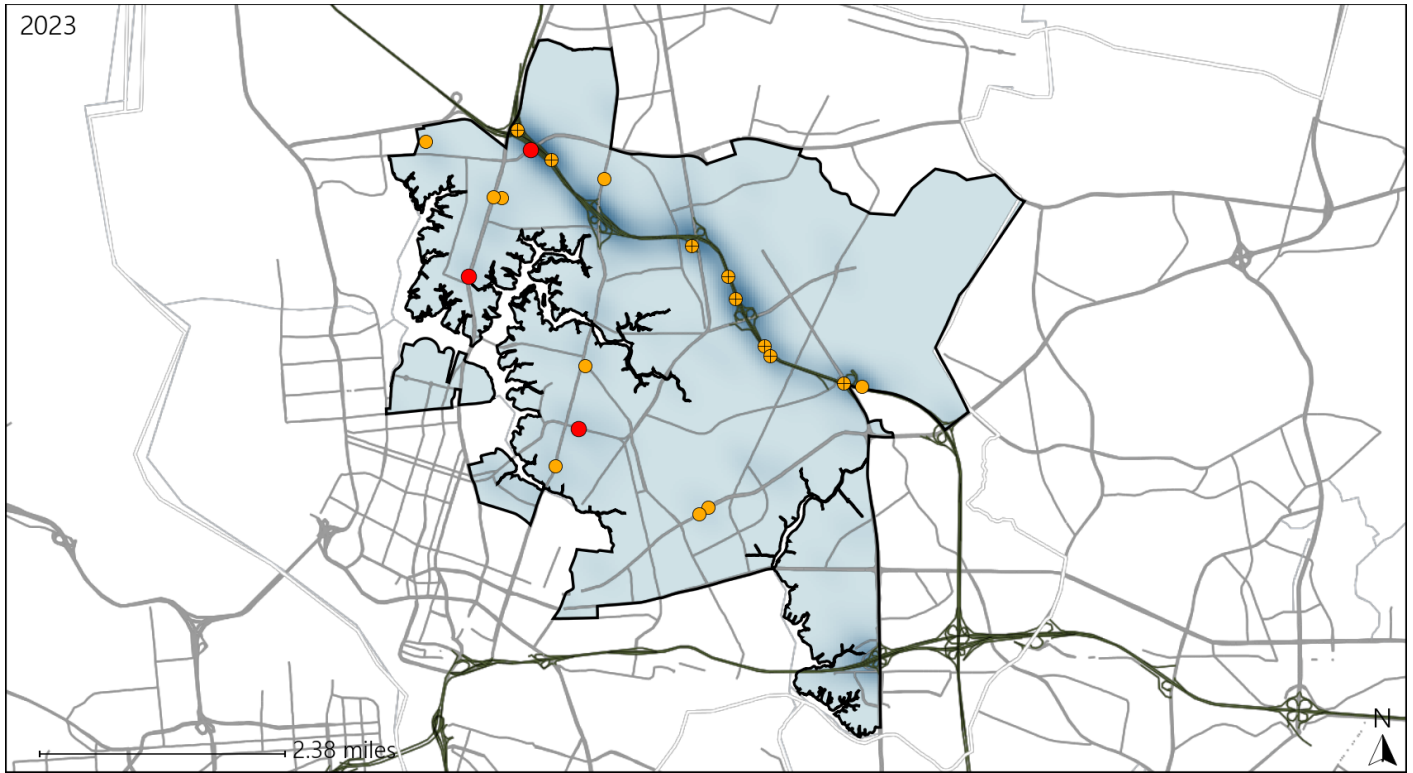


Available Crash Data - Calendar Year (CY)	CY 2020	CY 2021	CY 2022	CY 2023
Total Crashes	1197	1359	1189	1381
Fatal Crashes	12	12	11	7
Injury Crashes	422	462	412	493
Alcohol-Related Fatal Crashes	5	6	3	3
Percent of Alcohol-Related Fatal Crashes to Total Fatal Crashes	42%	50%	27%	43%
Alcohol-Related Injury Crashes	29	33	30	24
Percent of Alcohol-Related Injury Crashes to Total Injury Crashes	7%	7%	7%	5%

Virginia House District 93 Speed Crash Statistics

Report Generated May, 2024

	Count	Highest Time Period(s)	Highest Day(s)	Highest Month(s)
Fatal Crashes	3	3:00am - 5:59am	Friday • Sunday	January
Resulting Fatalities	3	9:00am - 11:59am (66%)	(66%)	(67%)
Serious Injury Crashes	17	3:00pm - 5:59pm Noon - 2:59pm (36%)	Sunday (29%)	October (24%)



House District 93 Speed-Related Crashes

Interstate Crashes Non-interstate Crashes
 ● Fatal ● Fatal
 ⊕ Serious Injury ⊕ Serious Injury

The blue gradient represents the density of all speed-related crashes.

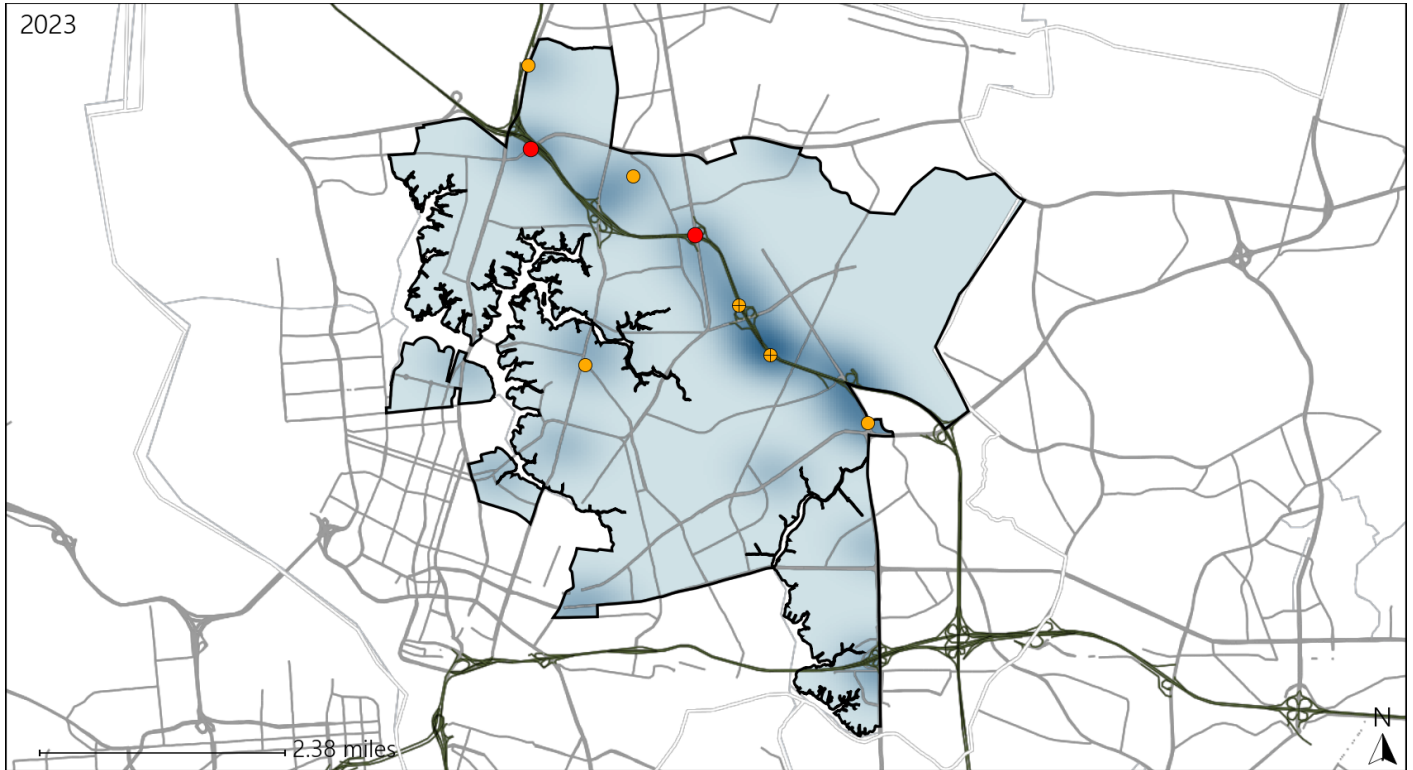


Available Crash Data - Calendar Year (CY)	CY 2020	CY 2021	CY 2022	CY 2023
Total Crashes	1197	1359	1189	1381
Fatal Crashes	12	12	11	7
Injury Crashes	422	462	412	493
Speed-Related Fatal Crashes	7	6	5	3
Percent of Speed-Related Fatal Crashes to Total Fatal Crashes	58%	50%	45%	43%
Speed-Related Injury Crashes	107	95	91	89
Percent of Speed-Related Injury Crashes to Total Injury Crashes	25%	21%	22%	18%

Virginia House District 93 Unrestrained Crash Statistics

Report Generated May, 2024

	Count	Highest Time Period(s)	Highest Day(s)	Highest Month(s)
Fatal Crashes	2	3:00am - 5:59am	Sunday • Tuesday	January • November
Unrestrained Fatalities	2	9:00pm - 11:59pm (100%)	(100%)	(100%)
Serious Injury Crashes	6	6:00pm - 8:59pm (50%)	Friday (33%)	April (33%)



House District 93 Unrestrained-Related Crashes

- | | |
|--|--|
| Interstate Crashes | Non-interstate Crashes |
| ● Fatal | ● Fatal |
| ● Serious Injury | ● Serious Injury |

The blue gradient represents the density of all unrestrained-related crashes.

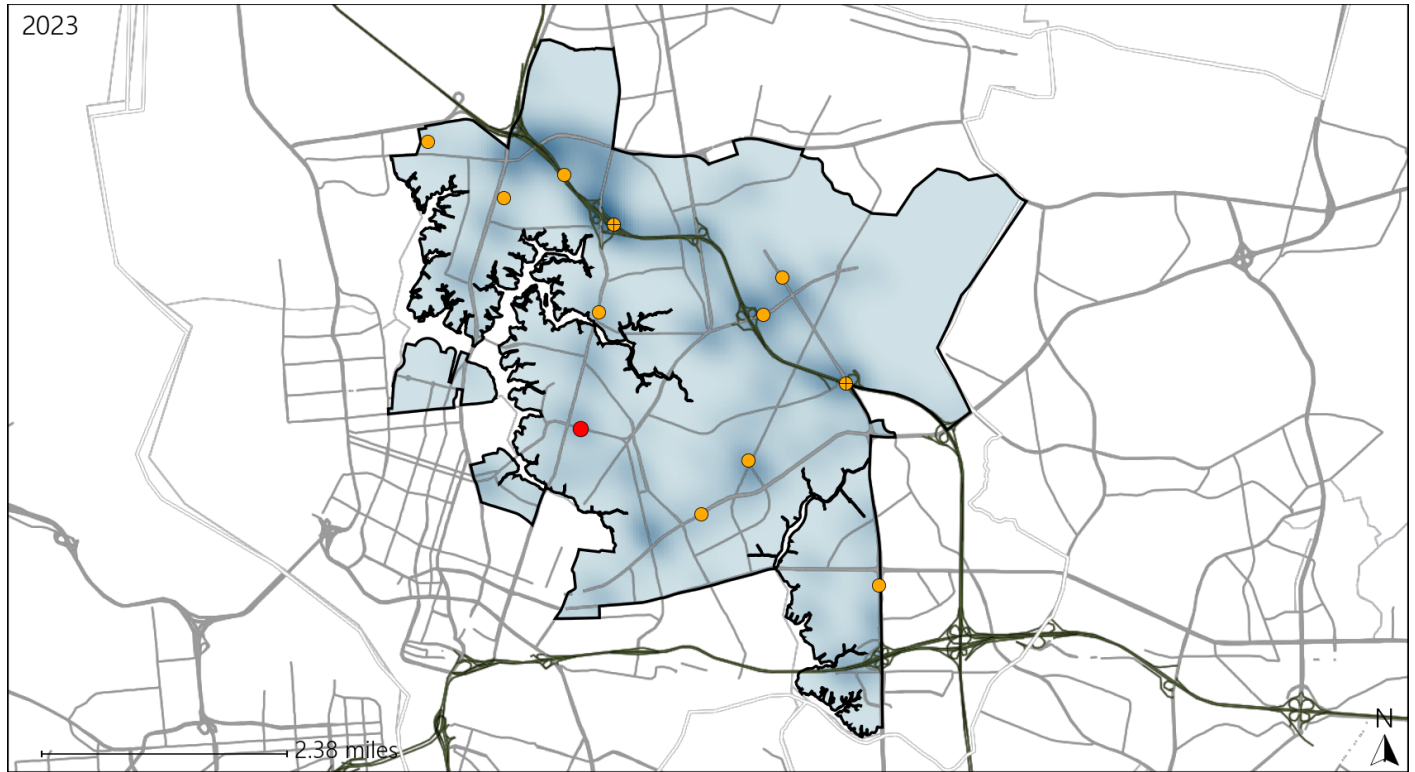


Available Crash Data - Calendar Year (CY)	CY 2020	CY 2021	CY 2022	CY 2023
Total Crashes	1197	1359	1189	1381
Fatalities	14	13	11	7
Injuries	629	711	656	806
Unrestrained Fatalities	7	4	4	2
Percent of Unrestrained Fatalities to Total Fatalities	50%	31%	36%	29%
Unrestrained Injuries	40	30	29	36
Percent of Unrestrained Injuries to Total Injuries	6%	4%	4%	4%

Virginia House District 93 Distracted Driving Crash Statistics

Report Generated May, 2024

	Count	Highest Time Period(s)	Highest Day(s)	Highest Month(s)
Fatal Crashes	1	9:00pm - 11:59pm	Friday	August
Resulting Fatalities	1	(100%)	(100%)	(100%)
Serious Injury Crashes	11	3:00pm - 5:59pm	Monday • Sunday	August • June
		(36%)	(54%)	(36%)



House District 93 Distracted Driving-Related Crashes

- | | |
|--------------------|------------------------|
| Interstate Crashes | Non-interstate Crashes |
| Fatal | Fatal |
| Serious Injury | Serious Injury |

The blue gradient represents the density of all distracted driving-related crashes.



Available Crash Data - Calendar Year (CY)	CY 2020	CY 2021	CY 2022	CY 2023
Total Crashes	1197	1359	1189	1381
Fatal Crashes	12	12	11	7
Injury Crashes	422	462	412	493
Distracted Driving-Related Fatal Crashes	1	2	0	1
Percent of Distracted Driving-Related Fatal Crashes to Total Fatal Crashes	8%	17%	0%	14%
Distracted Driving-Related Injury Crashes	72	75	75	76
Percent of Distracted Driving-Related Injury Crashes to Total Injury Crashes	17%	16%	18%	15%