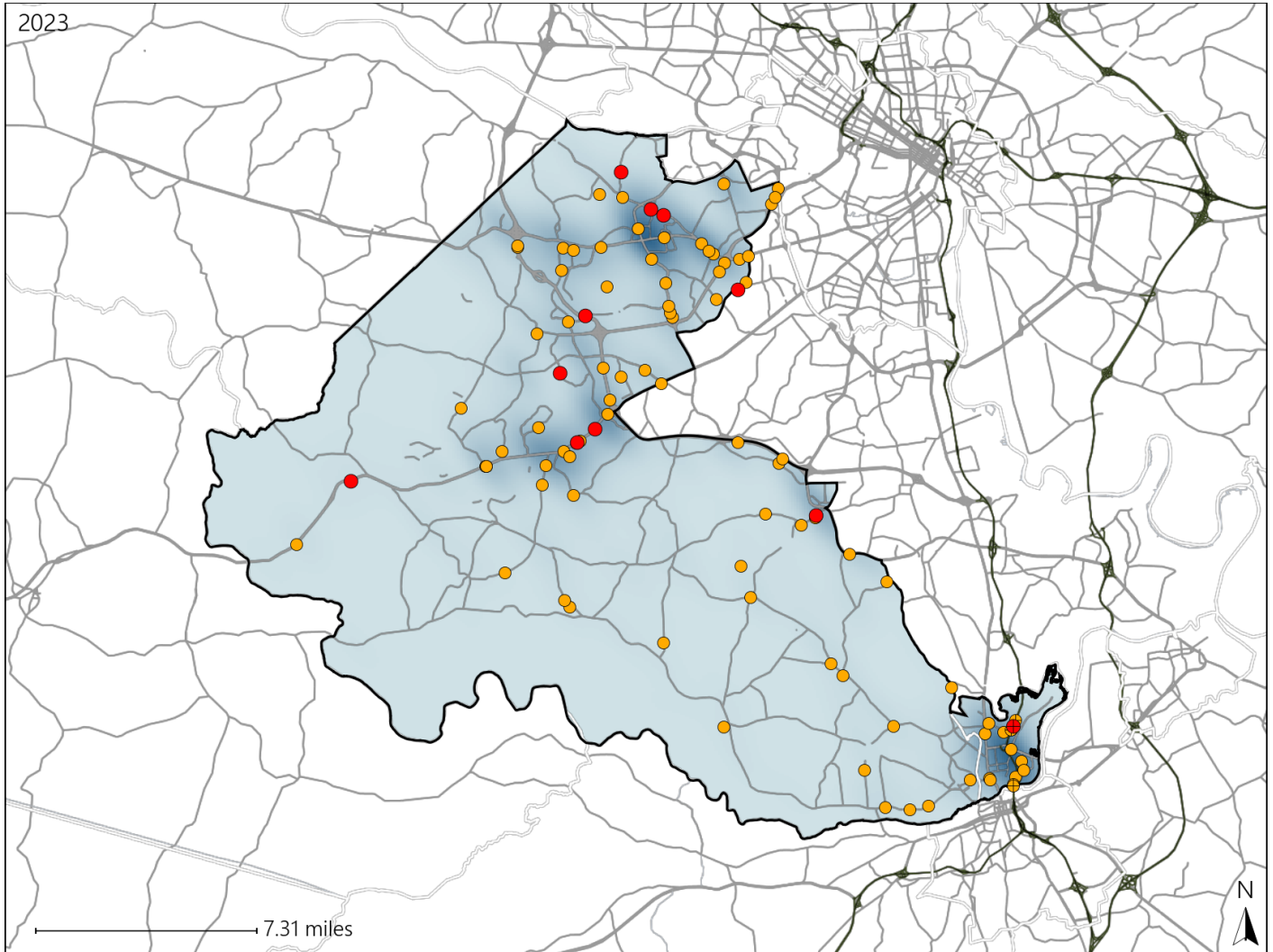


# Virginia Senate District 12 Crash Statistics

Report Generated May, 2024

	Count	Highest Time Period(s)	Highest Day(s)	Highest Month(s)
<b>Fatal Crashes</b>	<b>11</b>	<b>3:00pm - 5:59pm</b>	<b>Sunday</b>	<b>April</b>
<b>Resulting Fatalities</b>	<b>12</b>	<b>Noon - 2:59pm</b> (54%)	<b>(27%)</b>	<b>(36%)</b>
<b>Serious Injury Crashes</b>	<b>90</b>	<b>6:00pm - 8:59pm</b> (18%)	<b>Wednesday</b> (19%)	<b>June • October</b> (24%)



### Senate District 12 Crashes

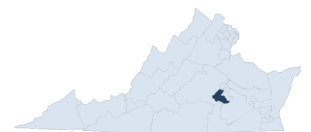
Interstate Crashes

- Fatal
- Serious Injury

Non-interstate Crashes

- Fatal
- Serious Injury

The blue gradient represents the density of all crashes.

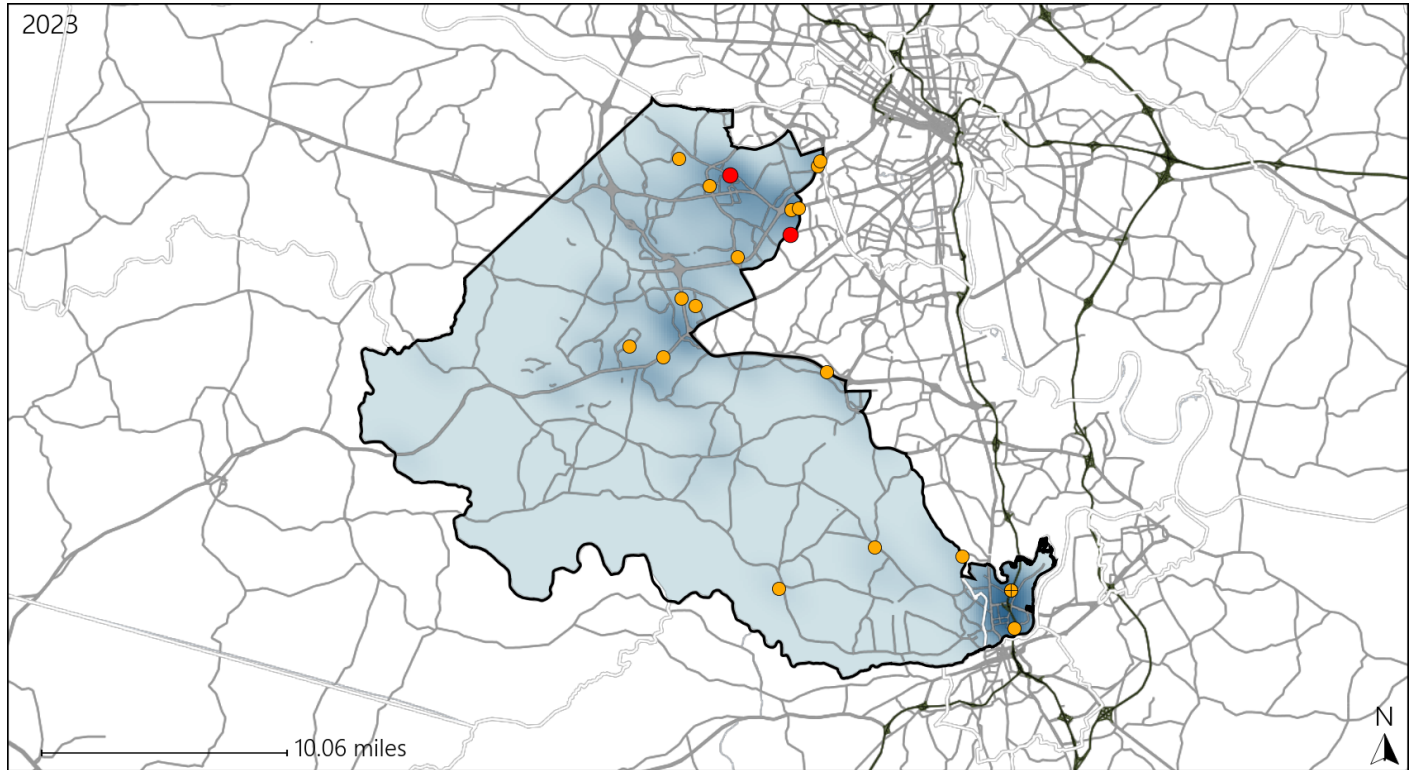


Available Crash Data - Calendar Year (CY)	CY 2020	CY 2021	CY 2022	CY 2023
Total Crashes	2309	2666	2903	3076
Fatal Crashes	11	12	17	11
Injury Crashes	539	682	700	673

# Virginia Senate District 12 Alcohol Crash Statistics

Report Generated May, 2024

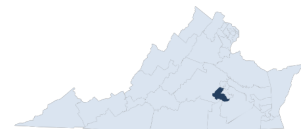
	Count	Highest Time Period(s)	Highest Day(s)	Highest Month(s)
<b>Fatal Crashes</b>	<b>2</b>	<b>3:00am - 5:59am</b>	<b>Friday • Sunday</b>	<b>April • September</b>
<b>Resulting Fatalities</b>	<b>2</b>	<b>6:00pm - 8:59pm</b> (100%)	<b>(100%)</b>	<b>(100%)</b>
<b>Serious Injury Crashes</b>	<b>18</b>	<b>Midnight - 2:59am</b> (50%)	<b>Saturday</b> (22%)	<b>December</b> (28%)



### Senate District 12 Alcohol-Related Crashes

Interstate Crashes                      Non-interstate Crashes  
 ● Fatal                                      ● Fatal  
 ● Serious Injury                          ● Serious Injury

The blue gradient represents the density of all alcohol-related crashes.

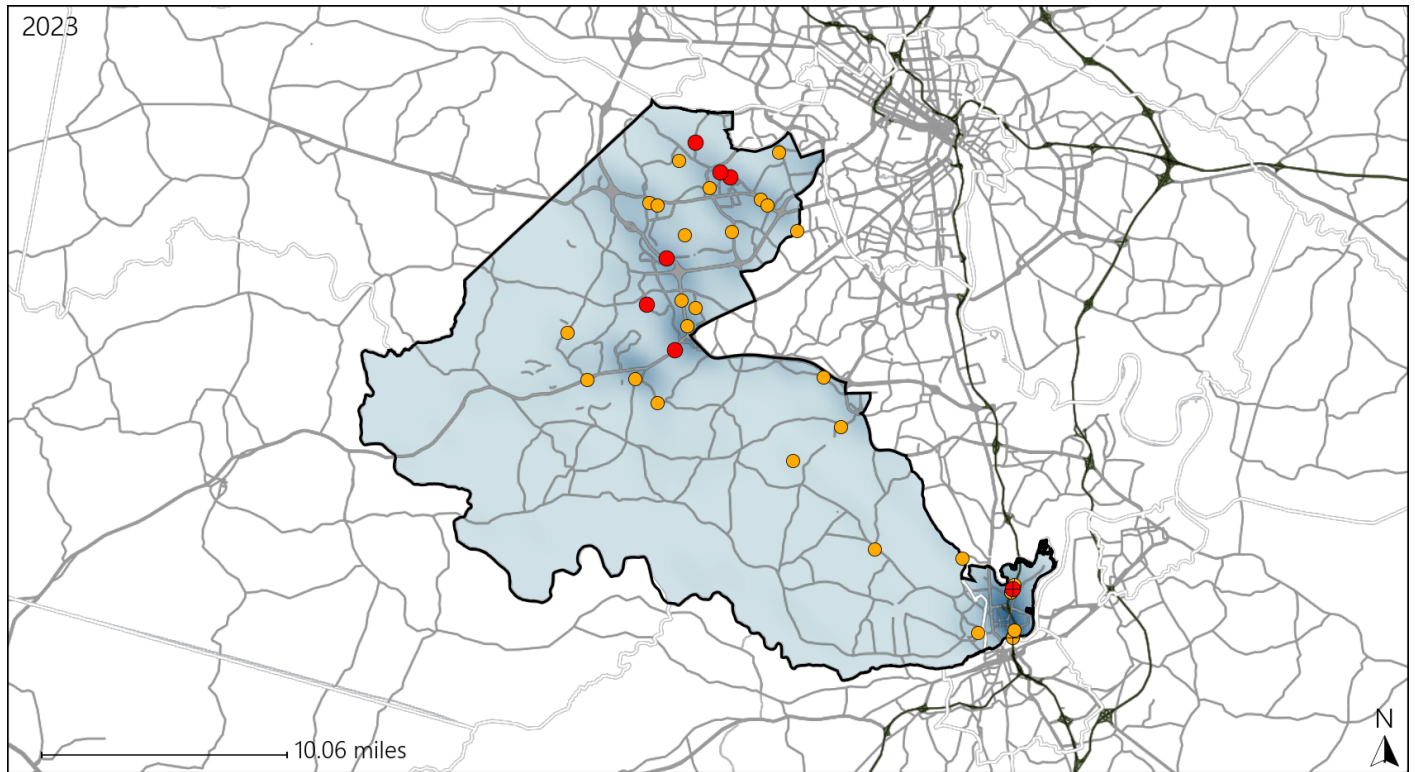


Available Crash Data - Calendar Year (CY)	CY 2020	CY 2021	CY 2022	CY 2023
Total Crashes	2309	2666	2903	3076
Fatal Crashes	11	12	17	11
Injury Crashes	539	682	700	673
Alcohol-Related Fatal Crashes	3	3	4	2
Percent of Alcohol-Related Fatal Crashes to Total Fatal Crashes	27%	25%	24%	18%
Alcohol-Related Injury Crashes	48	55	52	42
Percent of Alcohol-Related Injury Crashes to Total Injury Crashes	9%	8%	7%	6%

# Virginia Senate District 12 Speed Crash Statistics

Report Generated May, 2024

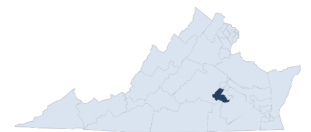
	Count	Highest Time Period(s)	Highest Day(s)	Highest Month(s)
<b>Fatal Crashes</b>	<b>7</b>	<b>3:00pm - 5:59pm</b>	<b>Sunday</b>	<b>April</b>
<b>Resulting Fatalities</b>	<b>8</b>	(43%)	(43%)	(57%)
<b>Serious Injury Crashes</b>	<b>29</b>	<b>9:00pm - 11:59pm</b> <b>Midnight - 2:59am</b>	<b>Saturday</b>	<b>March</b>
		(48%)	(28%)	(17%)



### Senate District 12 Speed-Related Crashes

Interstate Crashes                      Non-interstate Crashes  
 ● Fatal                                      ● Fatal  
 ⊕ Serious Injury                          ⊕ Serious Injury

The blue gradient represents the density of all speed-related crashes.

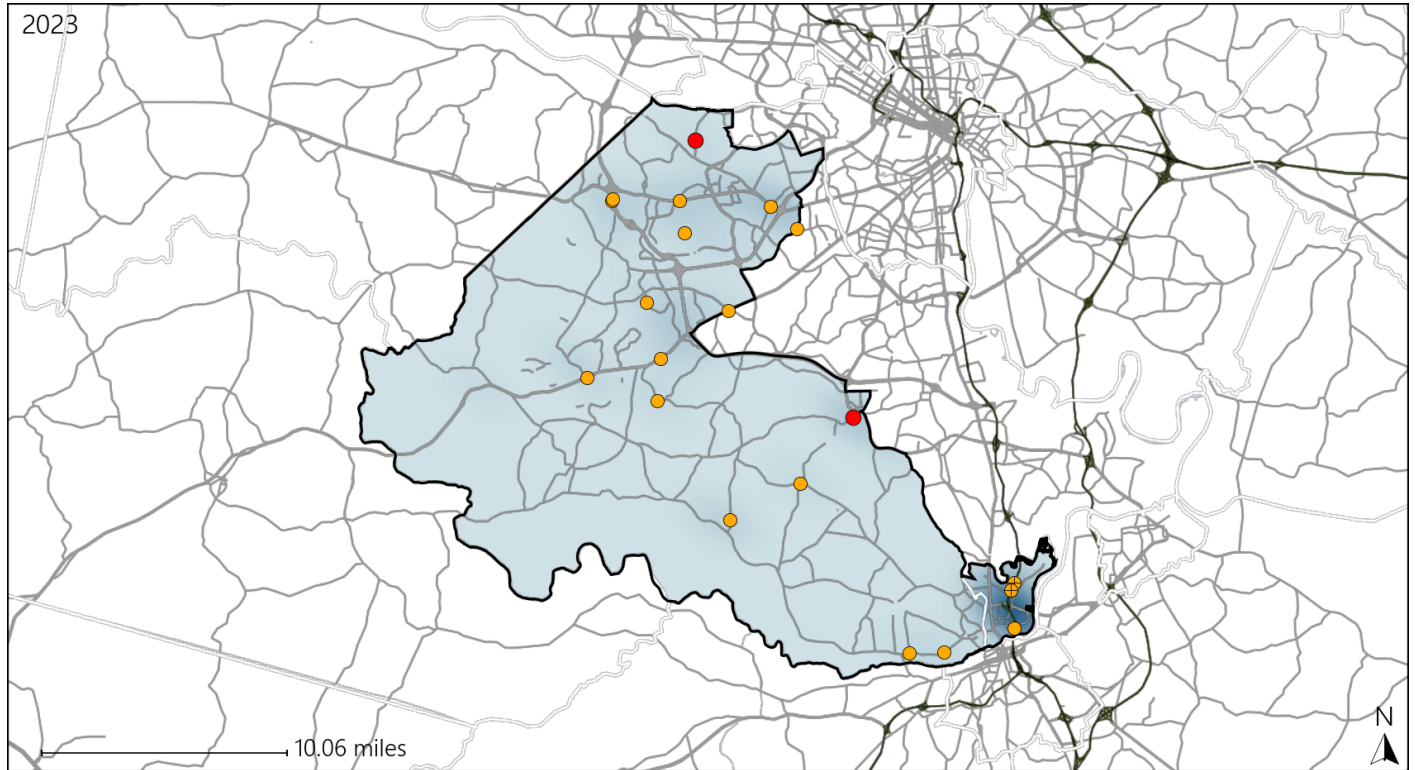


Available Crash Data - Calendar Year (CY)	CY 2020	CY 2021	CY 2022	CY 2023
Total Crashes	2309	2666	2903	3076
Fatal Crashes	11	12	17	11
Injury Crashes	539	682	700	673
Speed-Related Fatal Crashes	6	4	11	7
Percent of Speed-Related Fatal Crashes to Total Fatal Crashes	55%	33%	65%	64%
Speed-Related Injury Crashes	101	124	137	115
Percent of Speed-Related Injury Crashes to Total Injury Crashes	19%	18%	20%	17%

# Virginia Senate District 12 Unrestrained Crash Statistics

Report Generated May, 2024

	Count	Highest Time Period(s)	Highest Day(s)	Highest Month(s)
<b>Fatal Crashes</b>	<b>2</b>	3:00pm - 5:59pm	Monday • Tuesday	April • August
<b>Unrestrained Fatalities</b>	<b>2</b>	9:00pm - 11:59pm (100%)	(100%)	(100%)
<b>Serious Injury Crashes</b>	<b>18</b>	Midnight - 2:59am (22%)	Saturday (33%)	December • March (34%)



### Senate District 12 Unrestrained-Related Crashes

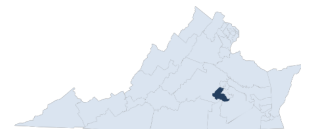
Interstate Crashes

Non-interstate Crashes

- Fatal
- Serious Injury

- Fatal
- Serious Injury

The blue gradient represents the density of all unrestrained-related crashes.

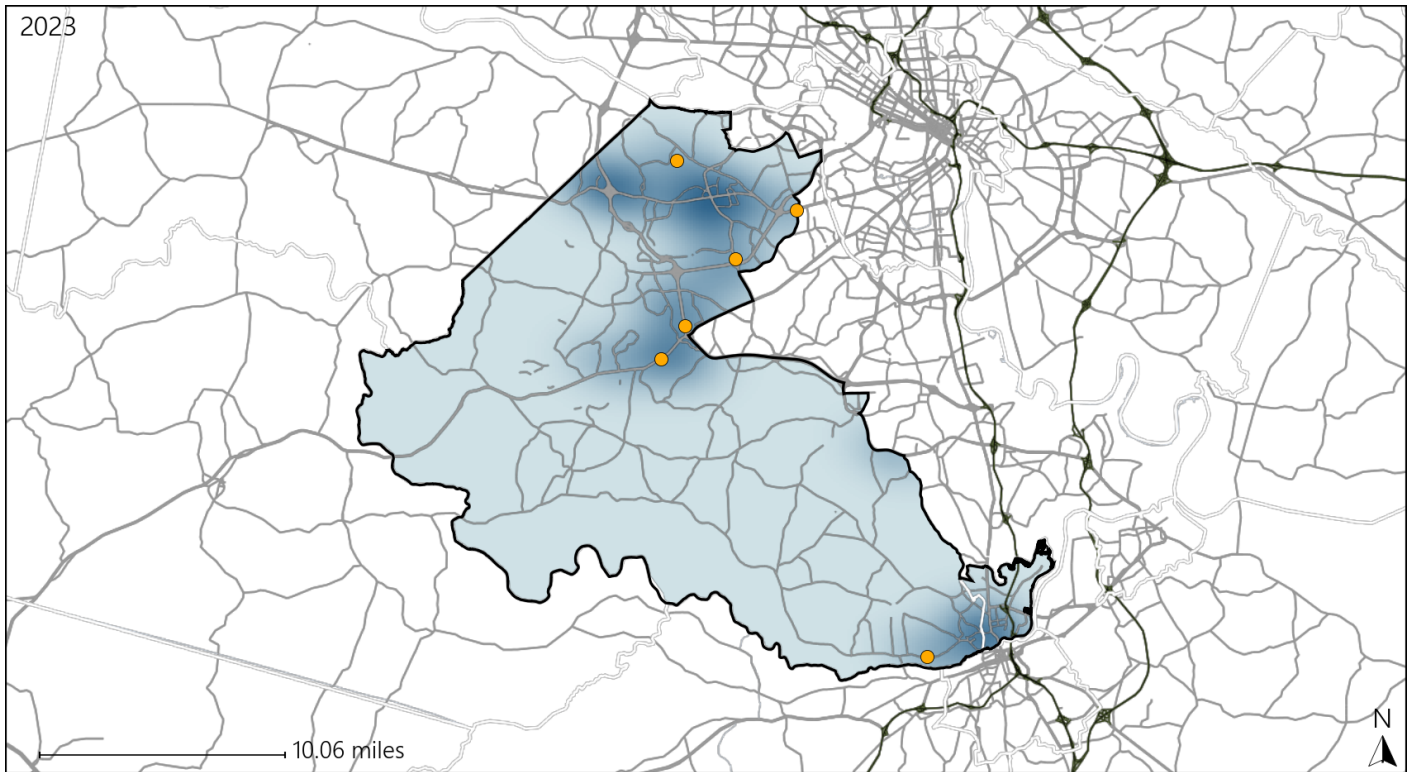


Available Crash Data - Calendar Year (CY)	CY 2020	CY 2021	CY 2022	CY 2023
<b>Total Crashes</b>	<b>2309</b>	<b>2666</b>	<b>2903</b>	<b>3076</b>
<b>Fatalities</b>	<b>13</b>	<b>12</b>	<b>17</b>	<b>12</b>
<b>Injuries</b>	<b>877</b>	<b>1060</b>	<b>1142</b>	<b>1056</b>
<b>Unrestrained Fatalities</b>	<b>6</b>	<b>4</b>	<b>5</b>	<b>2</b>
<b>Percent of Unrestrained Fatalities to Total Fatalities</b>	<b>46%</b>	<b>33%</b>	<b>29%</b>	<b>17%</b>
<b>Unrestrained Injuries</b>	<b>55</b>	<b>56</b>	<b>48</b>	<b>62</b>
<b>Percent of Unrestrained Injuries to Total Injuries</b>	<b>6%</b>	<b>5%</b>	<b>4%</b>	<b>6%</b>

# Virginia Senate District 12 Pedestrian Crash Statistics

Report Generated May, 2024

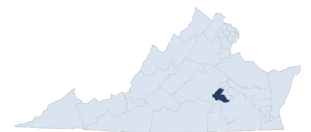
	Count	Highest Time Period(s)	Highest Day(s)	Highest Month(s)
<b>Fatal Crashes</b>	<b>0</b>	-	-	-
<b>Pedestrian Fatalities</b>	<b>0</b>	-	-	-
<b>Serious Injury Crashes</b>	<b>6</b>	6:00pm - 8:59pm 9:00pm - 11:59pm (66%)	Friday (33%)	April - February (34%)



### Senate District 12 Pedestrian-Related Crashes

- |                    |                        |
|--------------------|------------------------|
| Interstate Crashes | Non-interstate Crashes |
| ● Fatal            | ● Fatal                |
| ⊕ Serious Injury   | ● Serious Injury       |

The blue gradient represents the density of all pedestrian-related crashes.

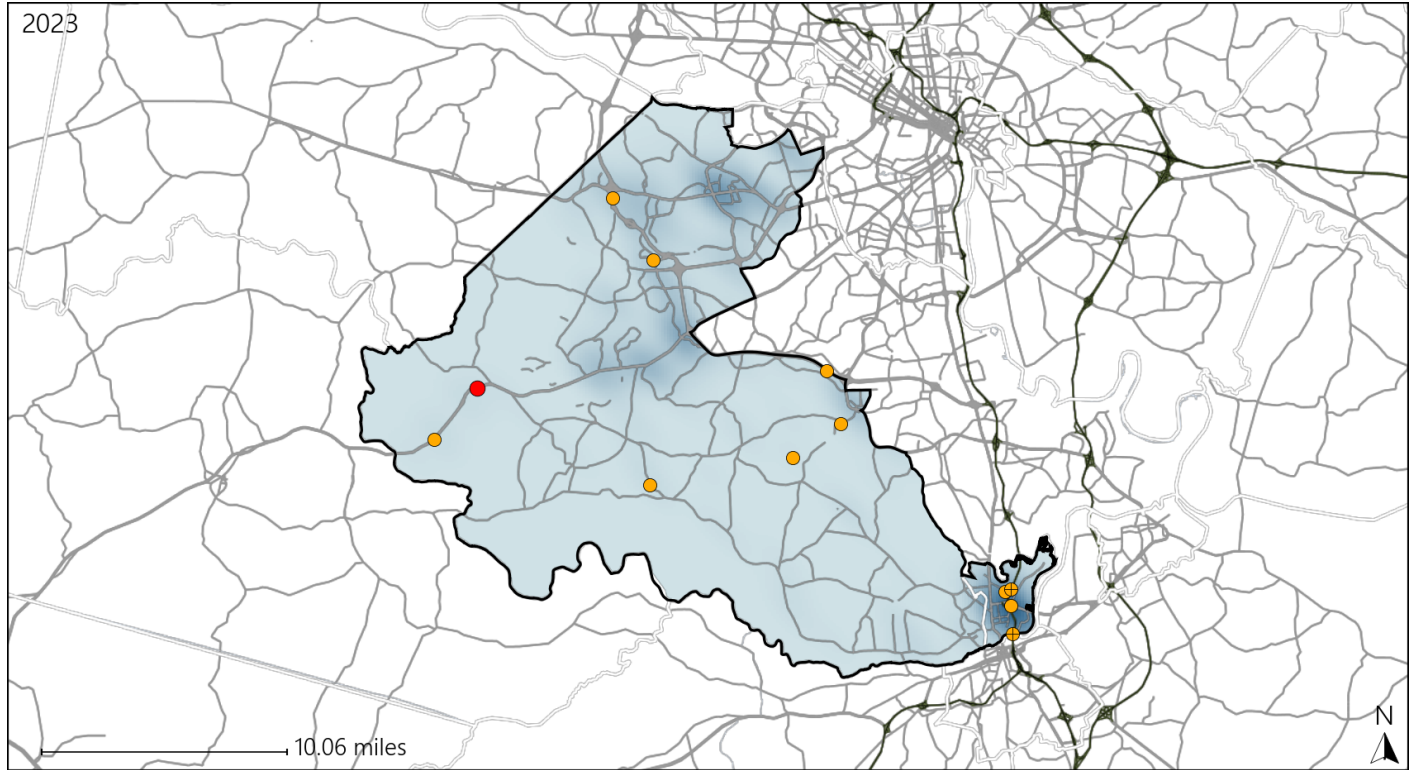


Available Crash Data - Calendar Year (CY)	CY 2020	CY 2021	CY 2022	CY 2023
Total Crashes	2309	2666	2903	3076
Fatal Crashes	11	12	17	11
Injury Crashes	539	682	700	673
Pedestrian-Related Fatal Crashes	2	1	1	0
Percent of Pedestrian-Related Fatal Crashes to Total Fatal Crashes	18%	8%	6%	0%
Pedestrian-Related Injury Crashes	13	14	19	21
Percent of Pedestrian-Related Injury Crashes to Total Injury Crashes	2%	2%	3%	3%

# Virginia Senate District 12 Distracted Driving Crash Statistics

Report Generated May, 2024

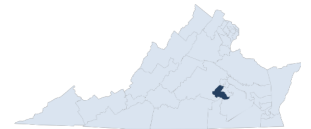
	Count	Highest Time Period(s)	Highest Day(s)	Highest Month(s)
<b>Fatal Crashes</b>	<b>1</b>	<b>Noon - 2:59pm</b>	<b>Monday</b>	<b>June</b>
<b>Resulting Fatalities</b>	<b>1</b>	<b>(100%)</b>	<b>(100%)</b>	<b>(100%)</b>
<b>Serious Injury Crashes</b>	<b>11</b>	<b>6:00pm - 8:59pm</b>	<b>Monday</b>	<b>April</b>
		<b>(27%)</b>	<b>(27%)</b>	<b>(27%)</b>



### Senate District 12 Distracted Driving-Related Crashes

- |                    |                        |
|--------------------|------------------------|
| Interstate Crashes | Non-interstate Crashes |
| Fatal              | Fatal                  |
| Serious Injury     | Serious Injury         |

The blue gradient represents the density of all distracted driving-related crashes.



Available Crash Data - Calendar Year (CY)	CY 2020	CY 2021	CY 2022	CY 2023
<b>Total Crashes</b>	<b>2309</b>	<b>2666</b>	<b>2903</b>	<b>3076</b>
<b>Fatal Crashes</b>	<b>11</b>	<b>12</b>	<b>17</b>	<b>11</b>
<b>Injury Crashes</b>	<b>539</b>	<b>682</b>	<b>700</b>	<b>673</b>
<b>Distracted Driving-Related Fatal Crashes</b>	<b>2</b>	<b>2</b>	<b>1</b>	<b>1</b>
<b>Percent of Distracted Driving-Related Fatal Crashes to Total Fatal Crashes</b>	<b>18%</b>	<b>17%</b>	<b>6%</b>	<b>9%</b>
<b>Distracted Driving-Related Injury Crashes</b>	<b>102</b>	<b>121</b>	<b>121</b>	<b>100</b>
<b>Percent of Distracted Driving-Related Injury Crashes to Total Injury Crashes</b>	<b>19%</b>	<b>18%</b>	<b>17%</b>	<b>15%</b>