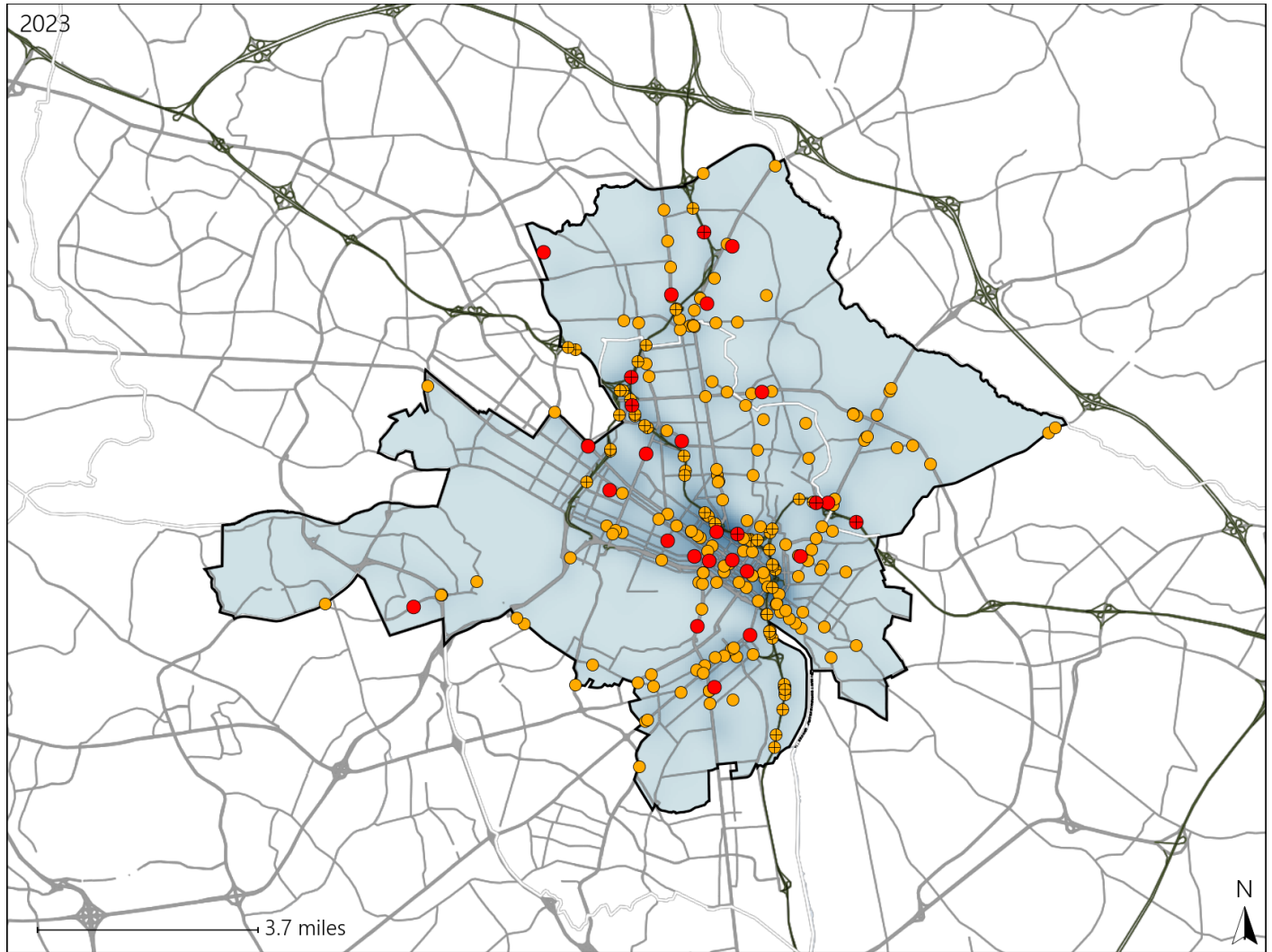


# Virginia Senate District 14 Crash Statistics

Report Generated May, 2024

	Count	Highest Time Period(s)	Highest Day(s)	Highest Month(s)
<b>Fatal Crashes</b>	<b>27</b>	<b>6:00am - 8:59am</b>	<b>Friday</b>	<b>September</b>
<b>Resulting Fatalities</b>	<b>27</b>	(22%)	(30%)	(19%)
<b>Serious Injury Crashes</b>	<b>209</b>	<b>3:00pm - 5:59pm</b>	<b>Saturday • Wednesday</b>	<b>December</b>
		(23%)	(40%)	(13%)



### Senate District 14 Crashes

Interstate Crashes

- Fatal
- Serious Injury

Non-interstate Crashes

- Fatal
- Serious Injury

The blue gradient represents the density of all crashes.

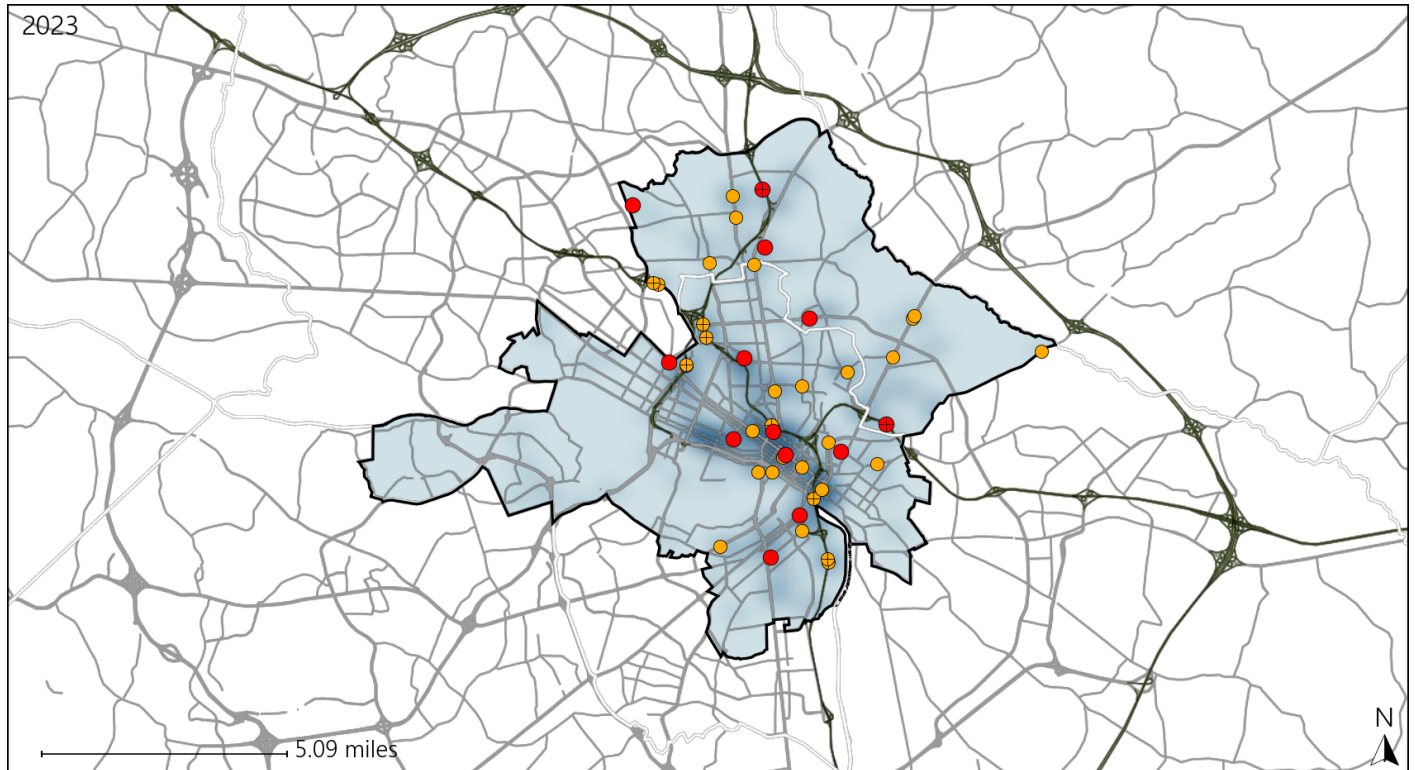


Available Crash Data - Calendar Year (CY)	CY 2020	CY 2021	CY 2022	CY 2023
Total Crashes	4973	5476	5606	5716
Fatal Crashes	23	16	33	27
Injury Crashes	1402	1500	1538	1760

# Virginia Senate District 14 Alcohol Crash Statistics

Report Generated May, 2024

	Count	Highest Time Period(s)	Highest Day(s)	Highest Month(s)
<b>Fatal Crashes</b>	<b>13</b>	<b>9:00pm - 11:59pm</b>	<b>Friday</b>	<b>August + January</b>
<b>Resulting Fatalities</b>	<b>13</b>	(31%)	(31%)	(46%)
<b>Serious Injury Crashes</b>	<b>31</b>	<b>Midnight - 2:59am</b>	<b>Saturday</b>	<b>December + March</b>
		(23%)	(26%)	(32%)




### Senate District 14 Alcohol-Related Crashes


Interstate Crashes

Non-interstate Crashes

 Fatal

 Fatal

 Serious Injury

 Serious Injury

The blue gradient represents the density of all alcohol-related crashes.

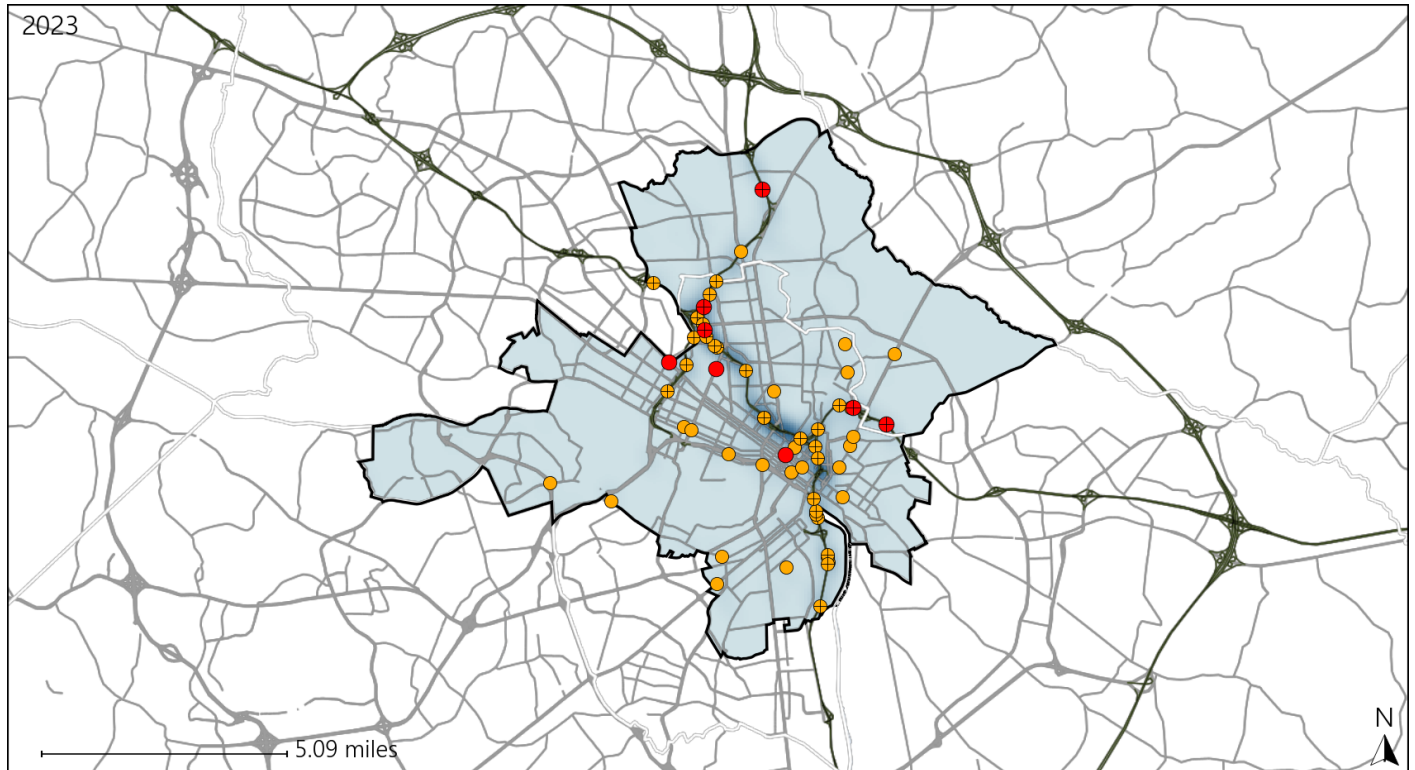


Available Crash Data - Calendar Year (CY)	CY 2020	CY 2021	CY 2022	CY 2023
Total Crashes	4973	5476	5606	5716
Fatal Crashes	23	16	33	27
Injury Crashes	1402	1500	1538	1760
Alcohol-Related Fatal Crashes	7	5	9	13
Percent of Alcohol-Related Fatal Crashes to Total Fatal Crashes	30%	31%	27%	48%
Alcohol-Related Injury Crashes	71	81	91	107
Percent of Alcohol-Related Injury Crashes to Total Injury Crashes	5%	5%	6%	6%

# Virginia Senate District 14 Speed Crash Statistics

Report Generated May, 2024

	Count	Highest Time Period(s)	Highest Day(s)	Highest Month(s)
<b>Fatal Crashes</b>	<b>8</b>	<b>9:00pm - 11:59pm</b>	<b>Wednesday</b>	<b>September</b>
<b>Resulting Fatalities</b>	<b>8</b>	(38%)	(38%)	(38%)
<b>Serious Injury Crashes</b>	<b>52</b>	<b>3:00pm - 5:59pm</b>	<b>Saturday</b>	<b>May</b>
		(27%)	(31%)	(15%)



### Senate District 14 Speed-Related Crashes

Interstate Crashes                      Non-interstate Crashes  
 ● Fatal                                      ● Fatal  
 ⊕ Serious Injury                          ⊕ Serious Injury

The blue gradient represents the density of all speed-related crashes.

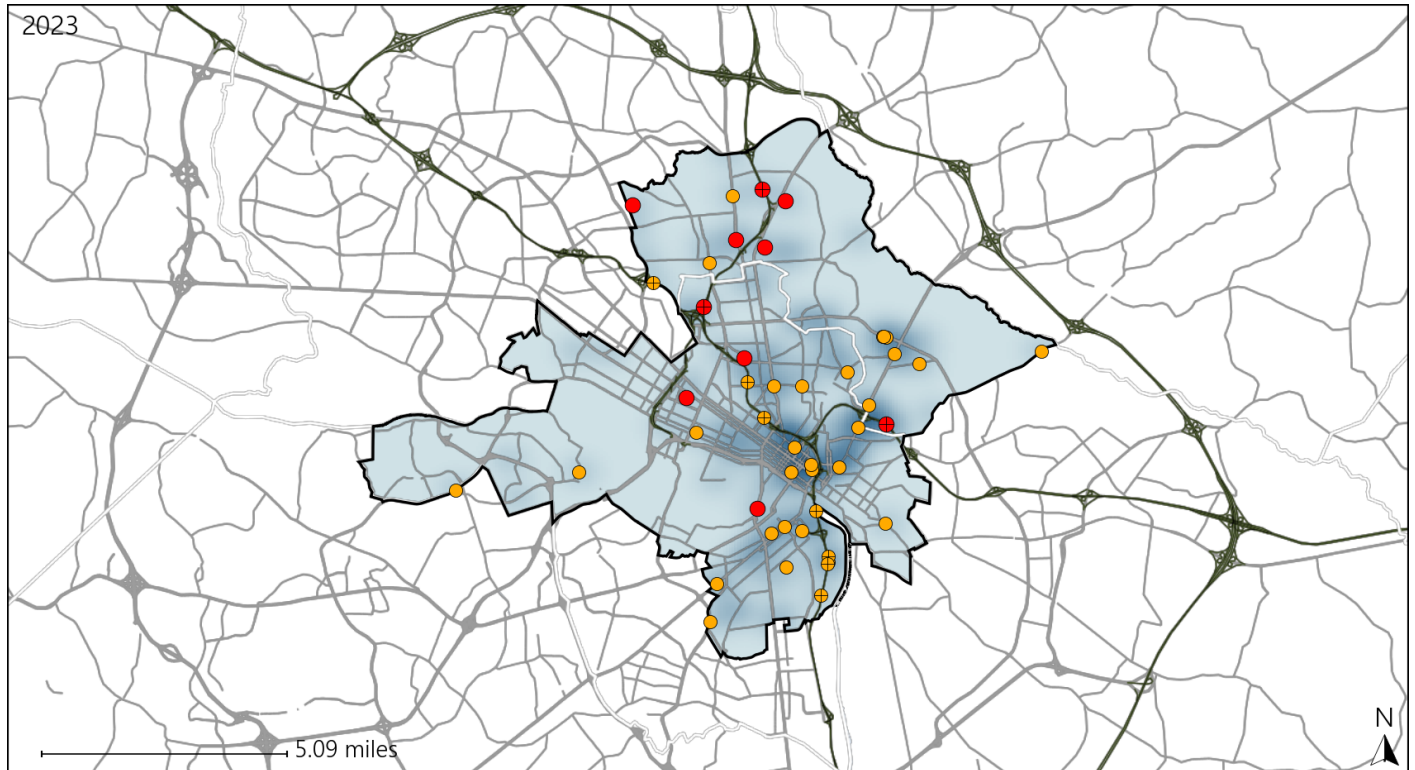


Available Crash Data - Calendar Year (CY)	CY 2020	CY 2021	CY 2022	CY 2023
Total Crashes	4973	5476	5606	5716
Fatal Crashes	23	16	33	27
Injury Crashes	1402	1500	1538	1760
Speed-Related Fatal Crashes	11	6	12	8
Percent of Speed-Related Fatal Crashes to Total Fatal Crashes	48%	38%	36%	30%
Speed-Related Injury Crashes	219	262	295	288
Percent of Speed-Related Injury Crashes to Total Injury Crashes	16%	17%	19%	16%

# Virginia Senate District 14 Unrestrained Crash Statistics

Report Generated May, 2024

	Count	Highest Time Period(s)	Highest Day(s)	Highest Month(s)
<b>Fatal Crashes</b>	<b>10</b>	Noon - 2:59pm	Monday • Sunday	September
<b>Unrestrained Fatalities</b>	<b>10</b>	(30%)	(40%)	(30%)
<b>Serious Injury Crashes</b>	<b>36</b>	3:00pm - 5:59pm	Sunday	October
		(33%)	(25%)	(19%)



### Senate District 14 Unrestrained-Related Crashes

Interstate Crashes

Non-interstate Crashes

● Fatal

● Fatal

⊕ Serious Injury

⊕ Serious Injury

The blue gradient represents the density of all unrestrained-related crashes.



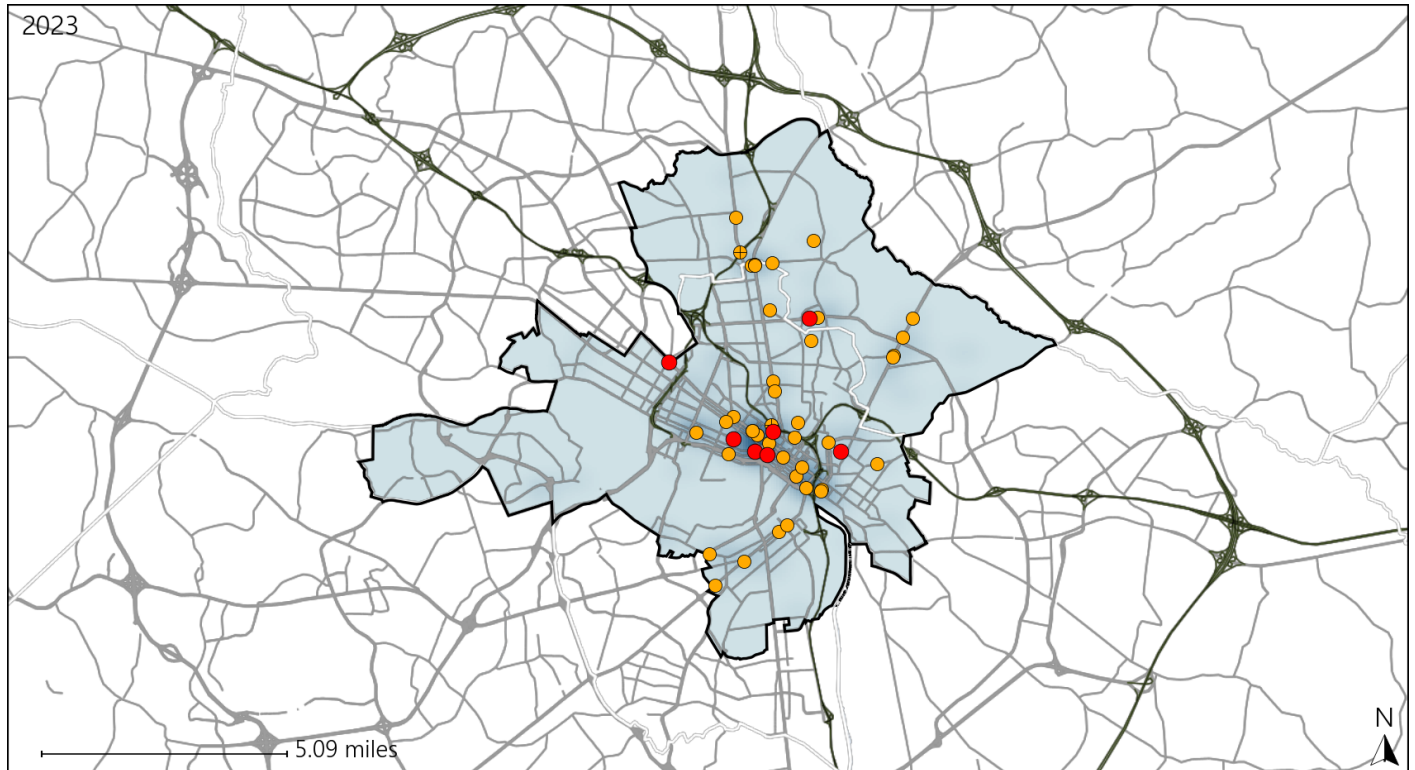
Available Crash Data - Calendar Year (CY)	CY 2020	CY 2021	CY 2022	CY 2023
Total Crashes	4973	5476	5606	5716
Fatalities	25	19	33	27
Injuries	2281	2501	2533	2838
Unrestrained Fatalities	13	7	10	10
Percent of Unrestrained Fatalities to Total Fatalities	52%	37%	30%	37%
Unrestrained Injuries	146	149	136	155
Percent of Unrestrained Injuries to Total Injuries	6%	6%	5%	5%



# Virginia Senate District 14 Pedestrian Crash Statistics

Report Generated May, 2024

	Count	Highest Time Period(s)	Highest Day(s)	Highest Month(s)
<b>Fatal Crashes</b>	<b>7</b>	<b>6:00am - 8:59am</b>	<b>Friday</b>	<b>August</b>
<b>Pedestrian Fatalities</b>	<b>7</b>	(43%)	(57%)	(43%)
<b>Serious Injury Crashes</b>	<b>43</b>	<b>6:00pm - 8:59pm</b>	<b>Saturday</b>	<b>August • February</b>
		(26%)	(21%)	(28%)



### Senate District 14 Pedestrian-Related Crashes

- |                    |                        |
|--------------------|------------------------|
| Interstate Crashes | Non-interstate Crashes |
| Fatal              | Fatal                  |
| Serious Injury     | Serious Injury         |

The blue gradient represents the density of all pedestrian-related crashes.

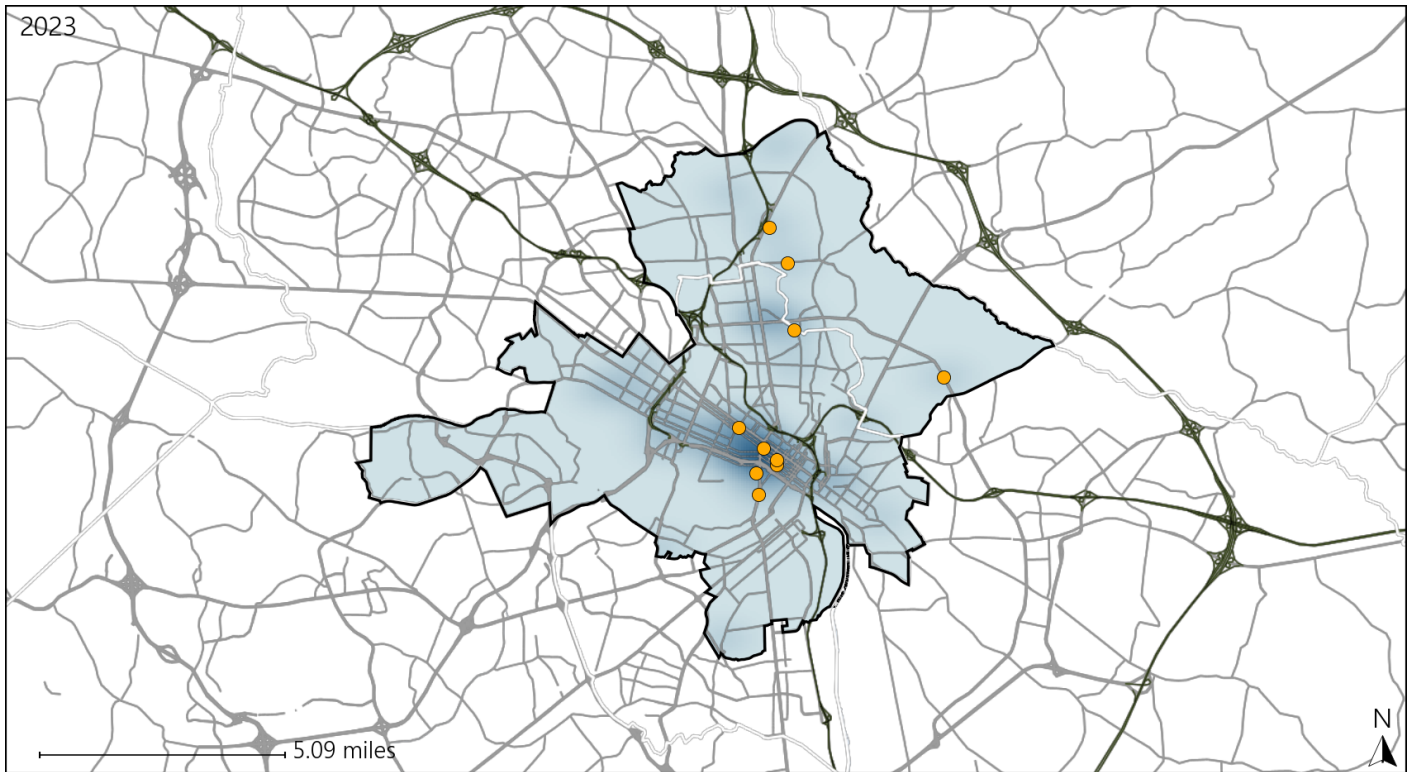


Available Crash Data - Calendar Year (CY)	CY 2020	CY 2021	CY 2022	CY 2023
Total Crashes	4973	5476	5606	5716
Fatal Crashes	23	16	33	27
Injury Crashes	1402	1500	1538	1760
Pedestrian-Related Fatal Crashes	6	3	12	7
Percent of Pedestrian-Related Fatal Crashes to Total Fatal Crashes	26%	19%	36%	26%
Pedestrian-Related Injury Crashes	94	119	131	141
Percent of Pedestrian-Related Injury Crashes to Total Injury Crashes	7%	8%	9%	8%

# Virginia Senate District 14 Bicycle Crash Statistics

Report Generated May, 2024

	Count	Highest Time Period(s)	Highest Day(s)	Highest Month(s)
<b>Fatal Crashes</b>	<b>0</b>	-	-	-
<b>Bicycle Fatalities</b>	<b>0</b>	-	-	-
<b>Serious Injury Crashes</b>	<b>10</b>	3:00am - 5:59am 3:00pm - 5:59pm (40%)	Wednesday (40%)	April • May (60%)



### Senate District 14 Bicycle-Related Crashes

Interstate Crashes

Non-interstate Crashes

- Fatal
- Serious Injury

- Fatal
- Serious Injury

The blue gradient represents the density of all bicycle-related crashes.

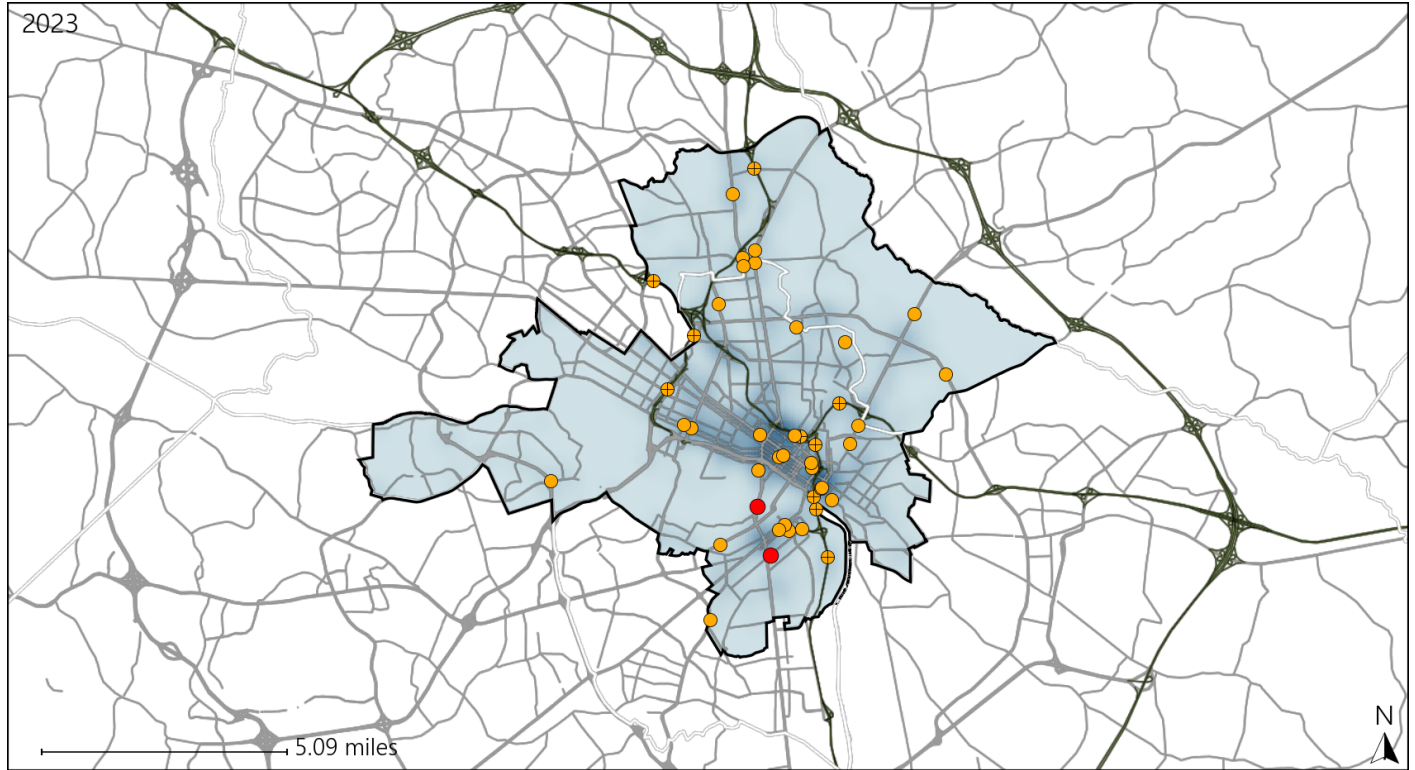


Available Crash Data - Calendar Year (CY)	CY 2020	CY 2021	CY 2022	CY 2023
Total Crashes	4973	5476	5606	5716
Fatal Crashes	23	16	33	27
Injury Crashes	1402	1500	1538	1760
Bicycle-Related Fatal Crashes	0	1	0	0
Percent of Bicycle-Related Fatal Crashes to Total Fatal Crashes	0%	6%	0%	0%
Bicycle-Related Injury Crashes	32	35	34	39
Percent of Bicycle-Related Injury Crashes to Total Injury Crashes	2%	2%	2%	2%

# Virginia Senate District 14 Distracted Driving Crash Statistics

Report Generated May, 2024

	Count	Highest Time Period(s)	Highest Day(s)	Highest Month(s)
<b>Fatal Crashes</b>	<b>2</b>	<b>Noon - 2:59pm</b>	<b>Friday • Tuesday</b>	<b>April • January</b>
<b>Resulting Fatalities</b>	<b>2</b>	(100%)	(100%)	(100%)
<b>Serious Injury Crashes</b>	<b>41</b>	<b>6:00pm - 8:59pm</b>	<b>Wednesday</b>	<b>February</b>
		(24%)	(24%)	(17%)



### Senate District 14 Distracted Driving-Related Crashes

- |                    |                        |
|--------------------|------------------------|
| Interstate Crashes | Non-interstate Crashes |
| Fatal              | Fatal                  |
| Serious Injury     | Serious Injury         |

The blue gradient represents the density of all distracted driving-related crashes.



Available Crash Data - Calendar Year (CY)	CY 2020	CY 2021	CY 2022	CY 2023
Total Crashes	4973	5476	5606	5716
Fatal Crashes	23	16	33	27
Injury Crashes	1402	1500	1538	1760
Distracted Driving-Related Fatal Crashes	3	2	0	2
Percent of Distracted Driving-Related Fatal Crashes to Total Fatal Crashes	13%	13%	0%	7%
Distracted Driving-Related Injury Crashes	269	270	270	309
Percent of Distracted Driving-Related Injury Crashes to Total Injury Crashes	19%	18%	18%	18%