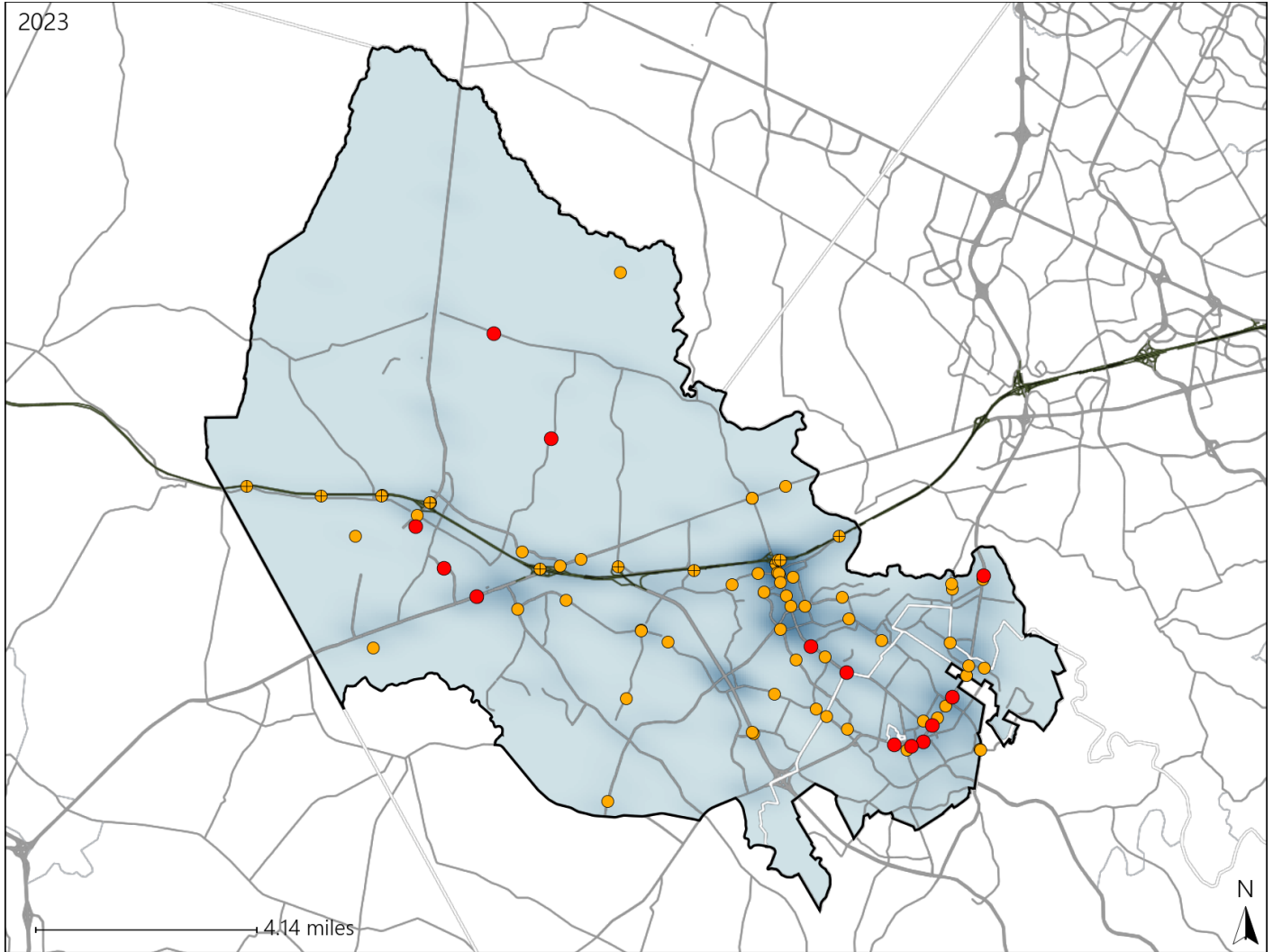


Virginia Senate District 30 Crash Statistics

Report Generated May, 2024

	Count	Highest Time Period(s)	Highest Day(s)	Highest Month(s)
Fatal Crashes	13	9:00pm - 11:59pm	Saturday	April - August
Resulting Fatalities	13	(31%)	(38%)	(46%)
Serious Injury Crashes	69	3:00pm - 5:59pm	Friday	August
		(28%)	(20%)	(14%)



Senate District 30 Crashes

Interstate Crashes

- Fatal
- Serious Injury

Non-interstate Crashes

- Fatal
- Serious Injury

The blue gradient represents the density of all crashes.

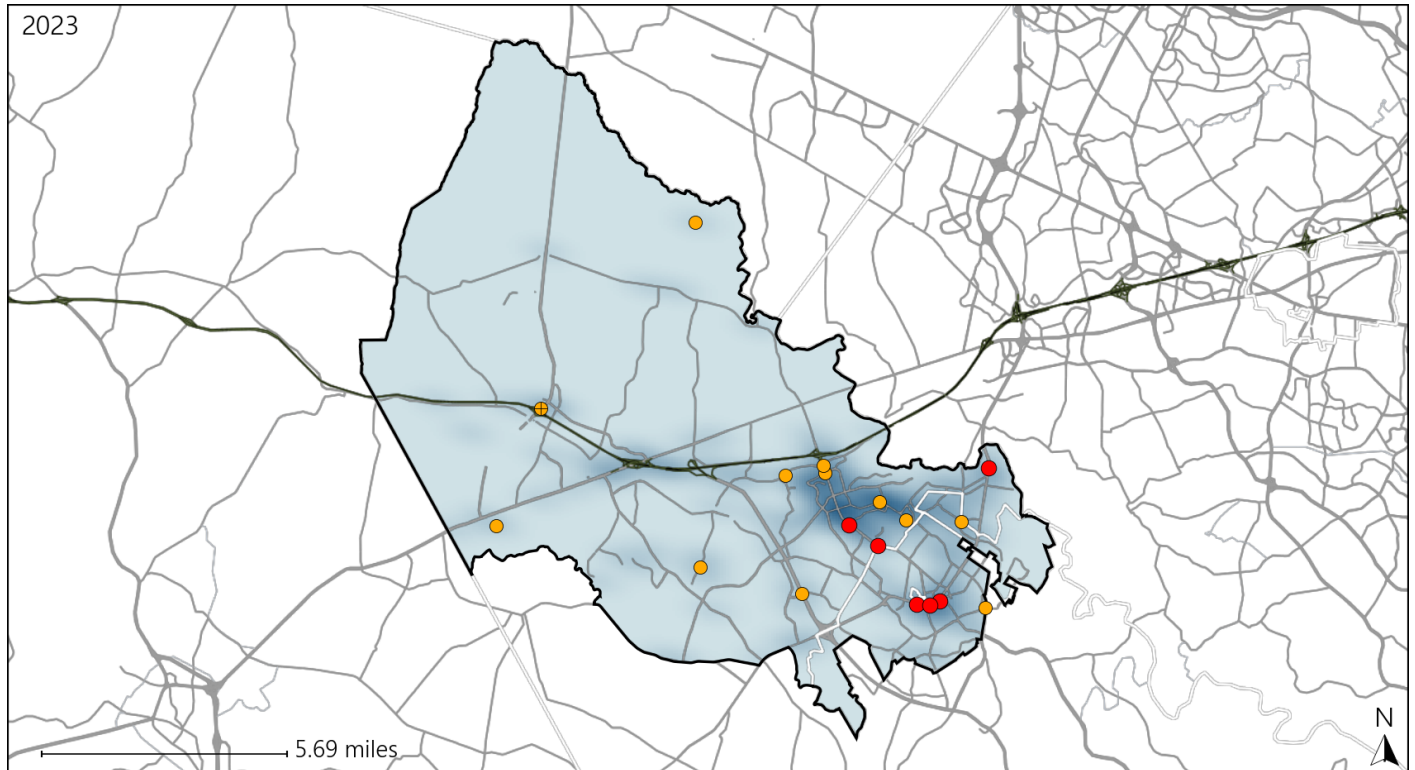


Available Crash Data - Calendar Year (CY)	CY 2020	CY 2021	CY 2022	CY 2023
Total Crashes	2022	2283	2523	2625
Fatal Crashes	8	12	11	13
Injury Crashes	679	804	861	985

Virginia Senate District 30 Alcohol Crash Statistics

Report Generated May, 2024

	Count	Highest Time Period(s)	Highest Day(s)	Highest Month(s)
Fatal Crashes	6	9:00pm - 11:59pm	Saturday	April • August
Resulting Fatalities	6	(67%)	(50%)	(66%)
Serious Injury Crashes	12	6:00pm - 8:59pm	Friday	April • May
		(42%)	(33%)	(50%)



Senate District 30 Alcohol-Related Crashes

Interstate Crashes Non-interstate Crashes
 ● Fatal ● Fatal
 ● Serious Injury ● Serious Injury

The blue gradient represents the density of all alcohol-related crashes.

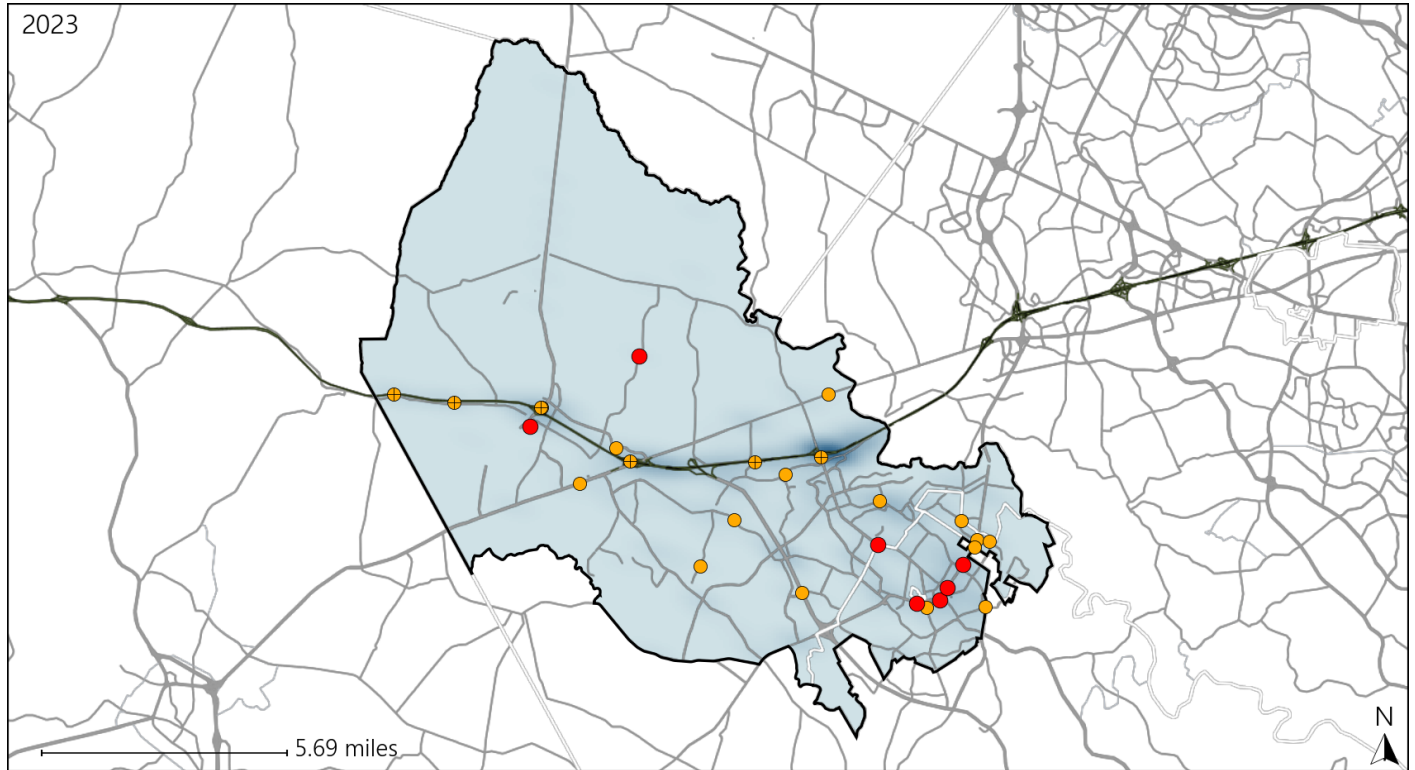


Available Crash Data - Calendar Year (CY)	CY 2020	CY 2021	CY 2022	CY 2023
Total Crashes	2022	2283	2523	2625
Fatal Crashes	8	12	11	13
Injury Crashes	679	804	861	985
Alcohol-Related Fatal Crashes	3	2	5	6
Percent of Alcohol-Related Fatal Crashes to Total Fatal Crashes	38%	17%	45%	46%
Alcohol-Related Injury Crashes	56	58	59	62
Percent of Alcohol-Related Injury Crashes to Total Injury Crashes	8%	7%	7%	6%

Virginia Senate District 30 Speed Crash Statistics

Report Generated May, 2024

	Count	Highest Time Period(s)	Highest Day(s)	Highest Month(s)
Fatal Crashes	7	6:00pm - 8:59pm	Saturday	August
Resulting Fatalities	7	Midnight - 2:59am (58%)	(57%)	(29%)
Serious Injury Crashes	21	6:00pm - 8:59pm (38%)	Friday (29%)	August (24%)



Senate District 30 Speed-Related Crashes

Interstate Crashes Non-interstate Crashes
 ● Fatal ● Fatal
 ● Serious Injury ● Serious Injury

The blue gradient represents the density of all speed-related crashes.

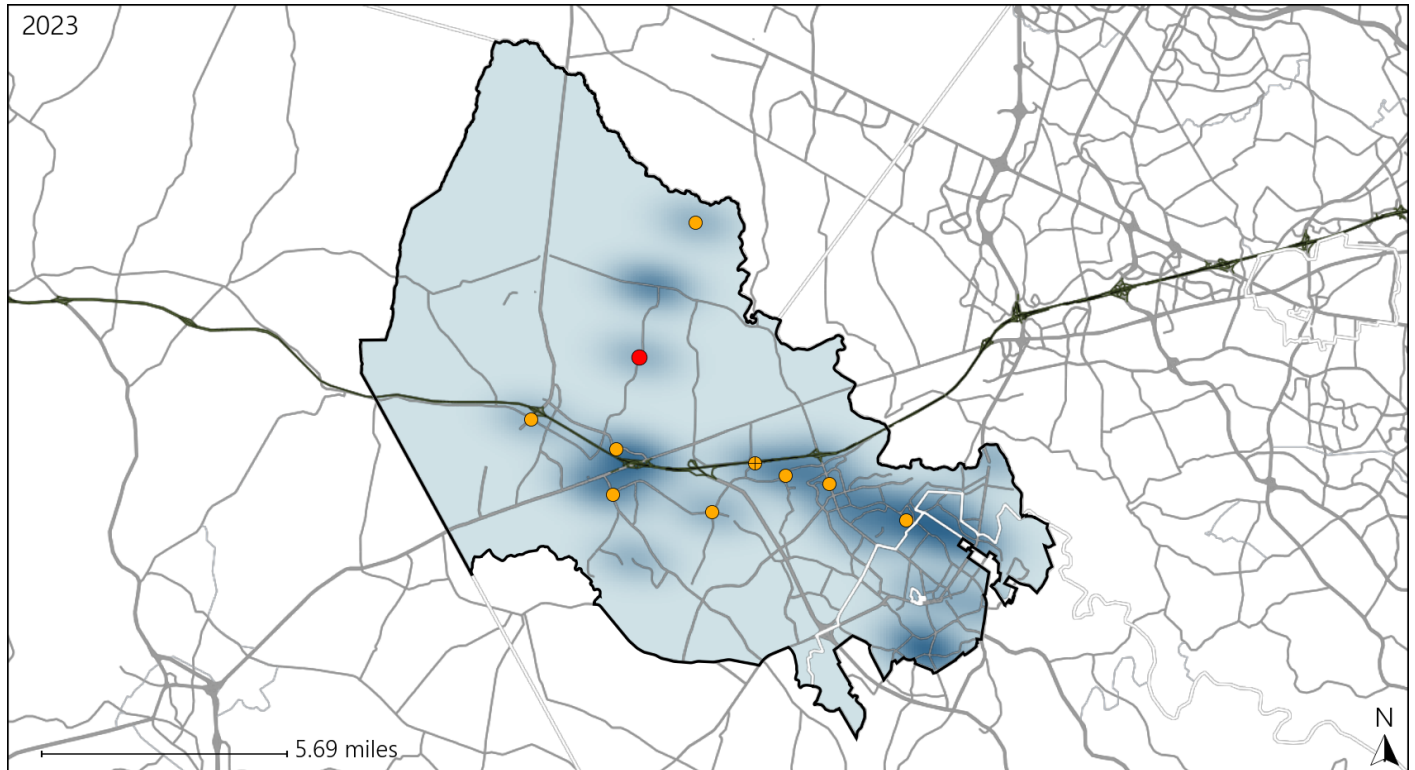


Available Crash Data - Calendar Year (CY)	CY 2020	CY 2021	CY 2022	CY 2023
Total Crashes	2022	2283	2523	2625
Fatal Crashes	8	12	11	13
Injury Crashes	679	804	861	985
Speed-Related Fatal Crashes	4	5	4	7
Percent of Speed-Related Fatal Crashes to Total Fatal Crashes	50%	42%	36%	54%
Speed-Related Injury Crashes	147	158	158	164
Percent of Speed-Related Injury Crashes to Total Injury Crashes	22%	20%	18%	17%

Virginia Senate District 30 Unrestrained Crash Statistics

Report Generated May, 2024

	Count	Highest Time Period(s)	Highest Day(s)	Highest Month(s)
Fatal Crashes	1	Midnight - 2:59am	Saturday	August
Unrestrained Fatalities	1	(100%)	(100%)	(100%)
Serious Injury Crashes	9	6:00pm - 8:59pm	Friday	May • October
		(33%)	(33%)	(44%)



Senate District 30 Unrestrained-Related Crashes

Interstate Crashes

- Fatal
- Serious Injury

Non-interstate Crashes

- Fatal
- Serious Injury

The blue gradient represents the density of all unrestrained-related crashes.

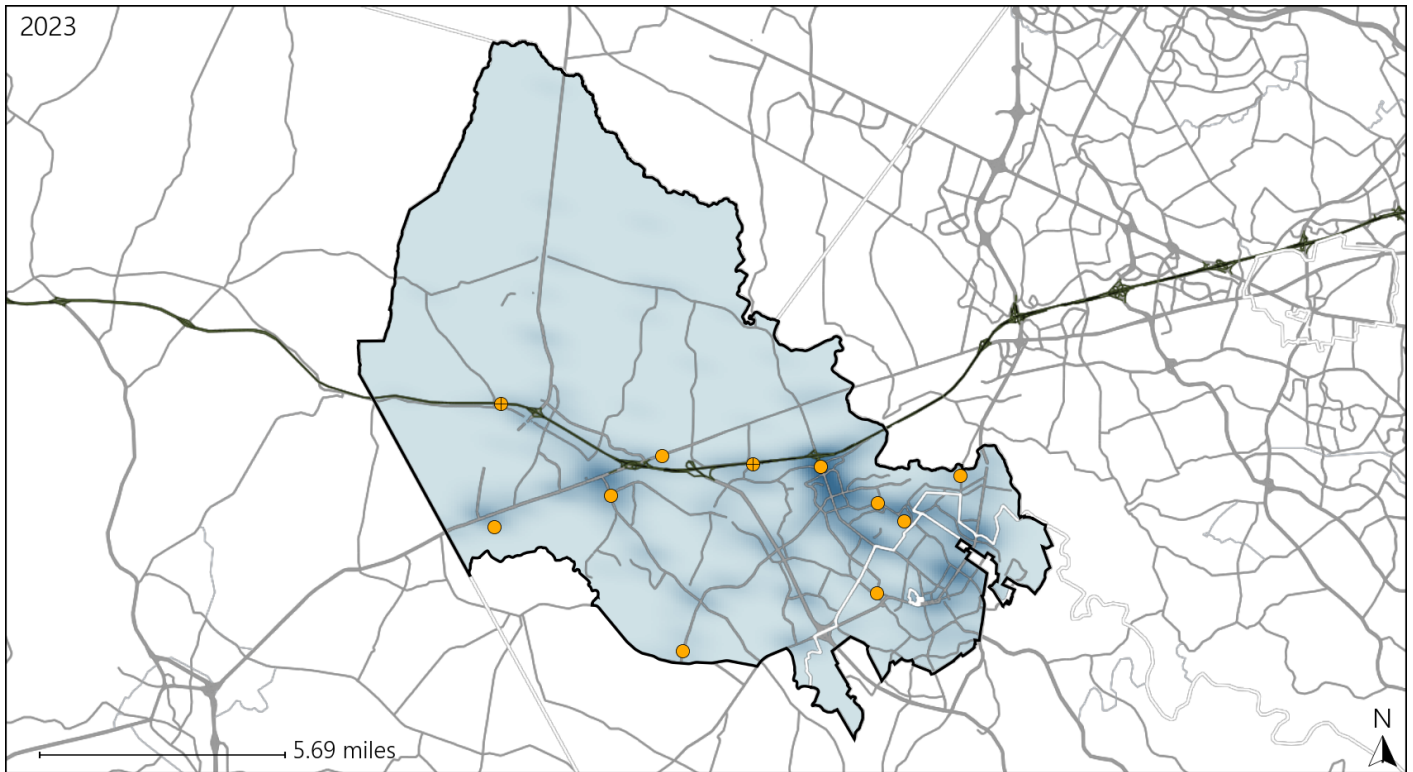


Available Crash Data - Calendar Year (CY)	CY 2020	CY 2021	CY 2022	CY 2023
Total Crashes	2022	2283	2523	2625
Fatalities	8	12	11	13
Injuries	1135	1398	1540	1733
Unrestrained Fatalities	2	2	3	1
Percent of Unrestrained Fatalities to Total Fatalities	25%	17%	27%	8%
Unrestrained Injuries	54	56	44	35
Percent of Unrestrained Injuries to Total Injuries	5%	4%	3%	2%

Virginia Senate District 30 Distracted Driving Crash Statistics

Report Generated May, 2024

	Count	Highest Time Period(s)	Highest Day(s)	Highest Month(s)
Fatal Crashes	0	-	-	-
Resulting Fatalities	0	-	-	-
Serious Injury Crashes	11	3:00am - 5:59am 6:00am - 8:59am (36%)	Monday (36%)	August (27%)



Senate District 30 Distracted Driving-Related Crashes

- | | |
|--------------------|------------------------|
| Interstate Crashes | Non-interstate Crashes |
| ● Fatal | ● Fatal |
| ⊕ Serious Injury | ● Serious Injury |

The blue gradient represents the density of all distracted driving-related crashes.



Available Crash Data - Calendar Year (CY)	CY 2020	CY 2021	CY 2022	CY 2023
Total Crashes	2022	2283	2523	2625
Fatal Crashes	8	12	11	13
Injury Crashes	679	804	861	985
Distracted Driving-Related Fatal Crashes	0	0	0	0
Percent of Distracted Driving-Related Fatal Crashes to Total Fatal Crashes	0%	0%	0%	0%
Distracted Driving-Related Injury Crashes	163	164	201	207
Percent of Distracted Driving-Related Injury Crashes to Total Injury Crashes	24%	20%	23%	21%