

PREPARING FOR YOUR VIRGINIA
PASSENGER VEHICLE ROAD SKILLS TEST

Your road skills test will be conducted on a closed course to test your basic control of the vehicle. To maximize safety in response to COVID-19, the modified test does not include driving on a public road but follows the recommended national guidelines for driver safety. It also ensures the safety of our customers and employees.

During the skills test, you will demonstrate your ability to maneuver a vehicle around other objects. You are expected to drive as you would if you were on a public road. Points will be deducted for reversals in direction, crossing over or touching boundary lines or cones, failing to use or incorrectly using your turn signals, failing to stop at a stop sign and failing to do head and traffic checks. You must complete the exercise as directed. You will receive specific instructions for each exercise prior to performing them. If the Virginia Department of Motor Vehicles (DMV) test examiner raises their hand or blows their whistle, you must STOP the vehicle, place it in park, and wait for further instructions.

A test examiner will provide instruction from the outside of the vehicle, and successful execution of each maneuver within the provided timeframe is required to pass. If you do not pass the test, you will need to make another appointment to take the entire test again. You must provide a vehicle that meets safety standards as described in this guide, in addition to a valid vehicle registration. Additionally, due to the modifications, customers whose vehicles do not provide a clear view into the interior of the vehicle, will be required to roll all windows down.

The information provided in this guide serves only to assist you in preparing for your test. However, it should not be used as the sole source and should be used in conjunction with the Virginia Driver's Manual.

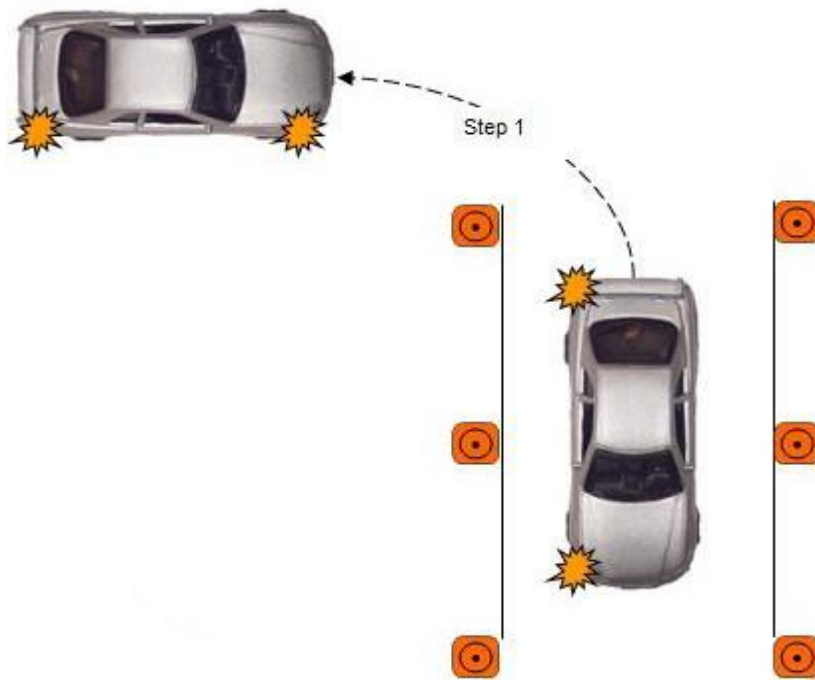
Test Information

You will be instructed to complete a series of closed course maneuvers.

Closed Course Maneuvers: A test of your basic control skills will be conducted on a closed course. It will assess your general driving ability along with the following exercises:

Pull-in Parking Instructions —You will be asked to drive past an area that represents a driveway or alley. You will be required to drive forward into the first parking space until the back end of your car clears the front set of cones. For the second part of the exercise, you are going to exit to the right and stop your vehicle in the original start position. You will have 3 minutes to complete this exercise.

You will be evaluated on your backing skills, visual skills, judgment of space, use of mirrors and turn signals, steering, braking, acceleration control, and general driving skills.

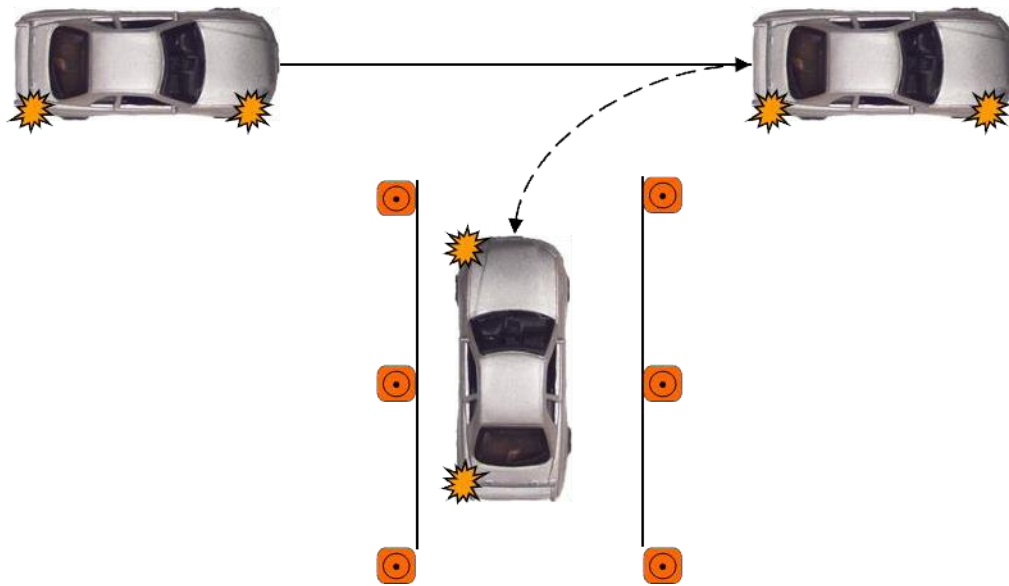


Back-in Parking Instructions —You will be required to drive past an opening on the right which represents a driveway or alley and stop your vehicle. Then, back your vehicle into the opening until the front of your vehicle is past the front set of cones and stop for further instructions.

For the second part of this exercise, you will exit the space to the right, stop your vehicle, and back your vehicle to the original starting position.

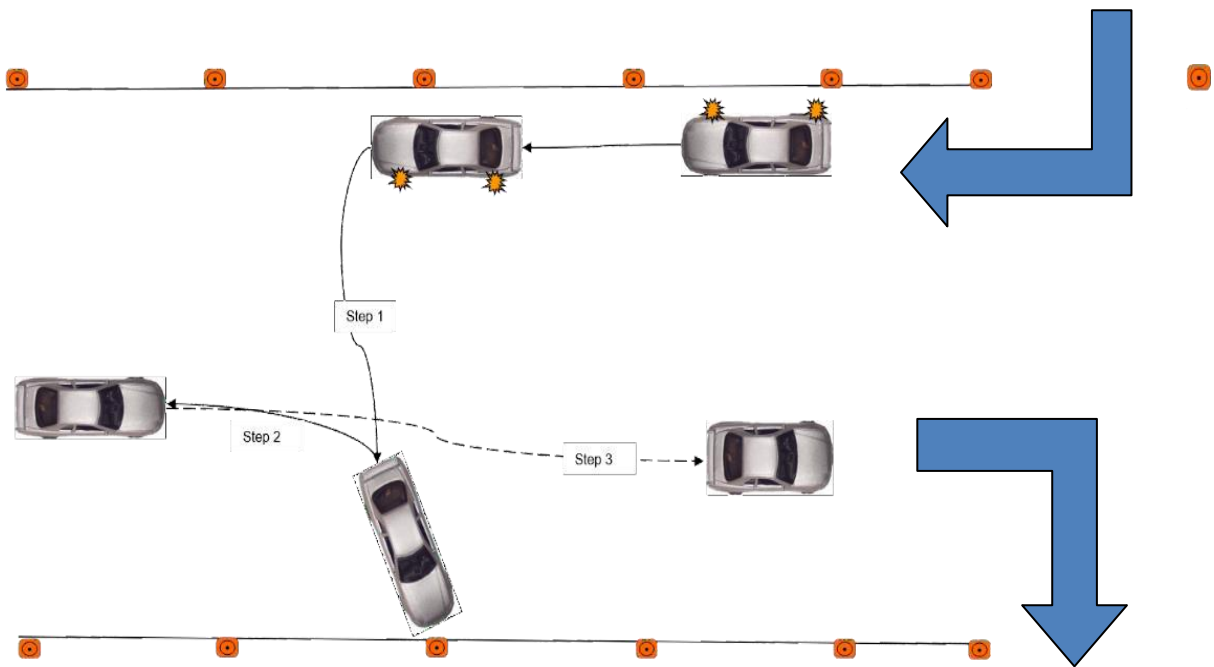
You will have 3 minutes to complete this exercise.

You will be evaluated on your backing skills, visual skills, judgment of space, use of mirrors and turn signals, steering, braking, acceleration control, and general driving skills.



Three-point Turnabout Instructions –You will be required to turn right into a space while keeping your vehicle as close to the right as possible and stop.

For the second part of the exercise, complete the three-point turnabout within the boundaries. Stop for further instructions.



You will have 3 minutes to complete this exercise.

You will be evaluated on your backing skills, visual skills, judgment of space, use of mirrors and turn signals, steering, braking, acceleration control, and general driving skills.

Automatic Failure* – Your driving test will be terminated immediately if you commit any unsafe action. A few examples of some unsafe actions are listed below:

- Failure to properly fasten safety belt (shoulder and lap belt, if equipped with both)
- Exceeding three minutes to complete each closed course exercise
- Moving a cone/flag
- Failure to come to a complete stop at a stop sign
- Failure to obey signs, signals, any other traffic law
- If you are involved in an avoidable crash or if your vehicle makes contact with other vehicles, objects or pedestrians
- If you commit any unsafe act
- If you put the vehicle over sidewalks or curbs
- If you do not follow the examiner's verbal instructions
- If you remove both hands from the steering wheel while the vehicle is in motion
- If the examiner is forced to intervene; either physically or verbally to avoid a collision or unsafe act

***Your tests will also be terminated when excessive basic driving errors are accumulated.**

VEHICLE CHECK LIST

Please use the check list below to determine if your vehicle is safe for testing purposes. Your vehicle will be disqualified for testing if it is deemed to be unsafe in accordance with the list below. If this occurs, you will need to reschedule your driving test for another time.

- Front and rear license plates – as required, with valid registration
- Windshield – unobstructed view, no cracks
- Driver and passenger doors – must open and close
- Seat belt – secure, fastens properly (shoulder and lap, if equipped)
- Tires – properly inflated with adequate tread
- Lights and lenses – none broken, all operate (head, brake, signals, hazards), lens repair tape permitted if proper color
- Rearview and outside left side mirror – secure, not broken
- Front seats – free of debris (oil, food, wetness), operational, not broken
- Exhaust system – secure, no leaks smelled, seen or heard
- Brake and accelerator pedal – secure, properly adjusted, operable
- Dashboard warning lights – none activated, no safety concerns
- Fluid leaks – no dripping oil, coolant, transmission fluid, etc.
- Horn – operational
- Speedometer – operational

If weather conditions are wet and/or cold:

- Heater and defroster must be operable
- Windows must roll up
- Windshield wipers and washers must be operable and have washer fluid

If weather conditions are extremely hot:

- Front windows must operate properly