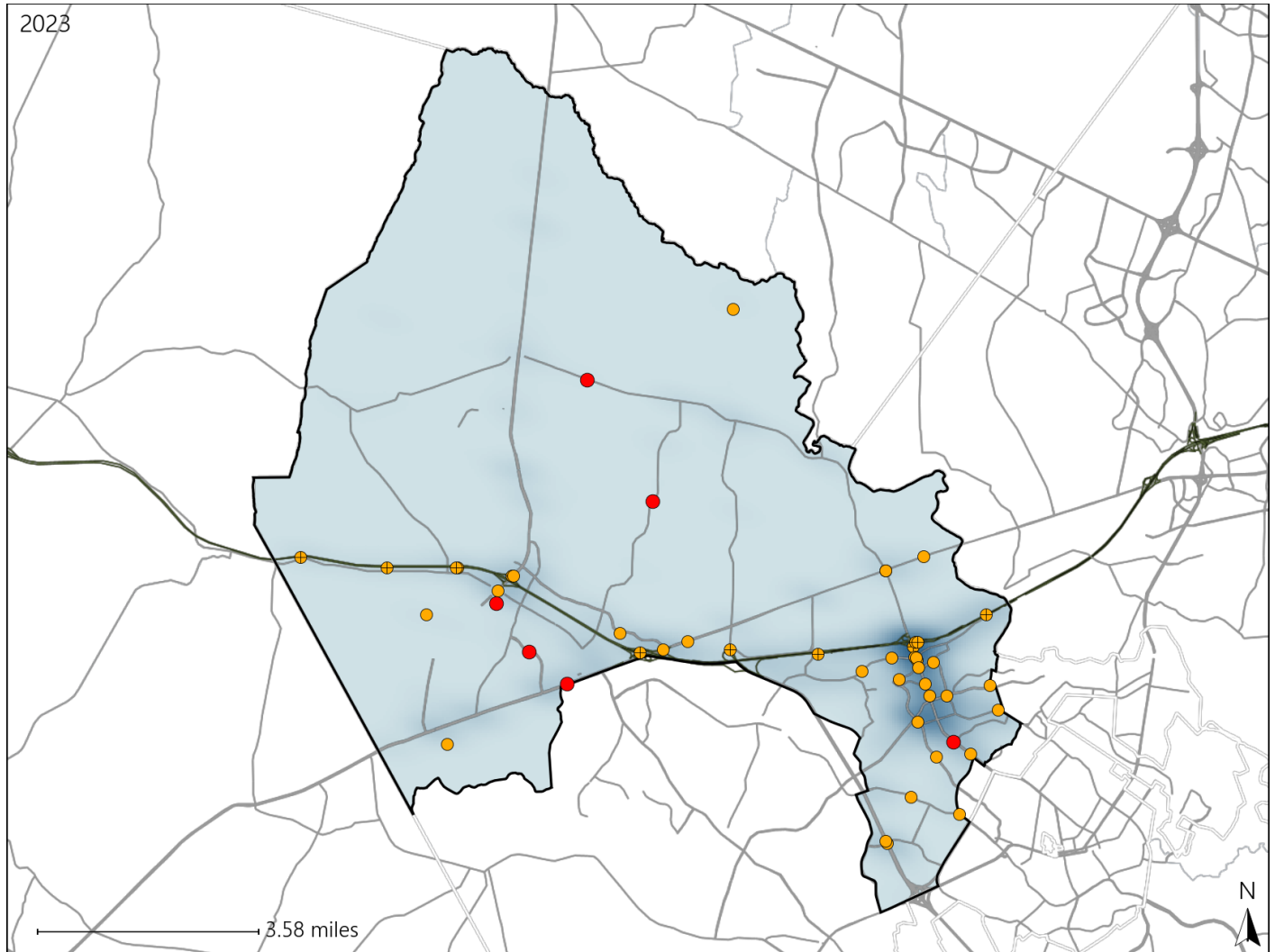


Virginia House District 21 Crash Statistics

Report Generated May, 2024

	Count	Highest Time Period(s)	Highest Day(s)	Highest Month(s)
Fatal Crashes	6	6:00am - 8:59am	Monday - Saturday	February
Resulting Fatalities	6	6:00pm - 8:59pm (66%)	(66%)	(33%)
Serious Injury Crashes	43	3:00pm - 5:59pm 6:00pm - 8:59pm (46%)	Thursday (23%)	April (16%)



House District 21 Crashes

Interstate Crashes

- Fatal
- Serious Injury

Non-interstate Crashes

- Fatal
- Serious Injury

The blue gradient represents the density of all crashes.

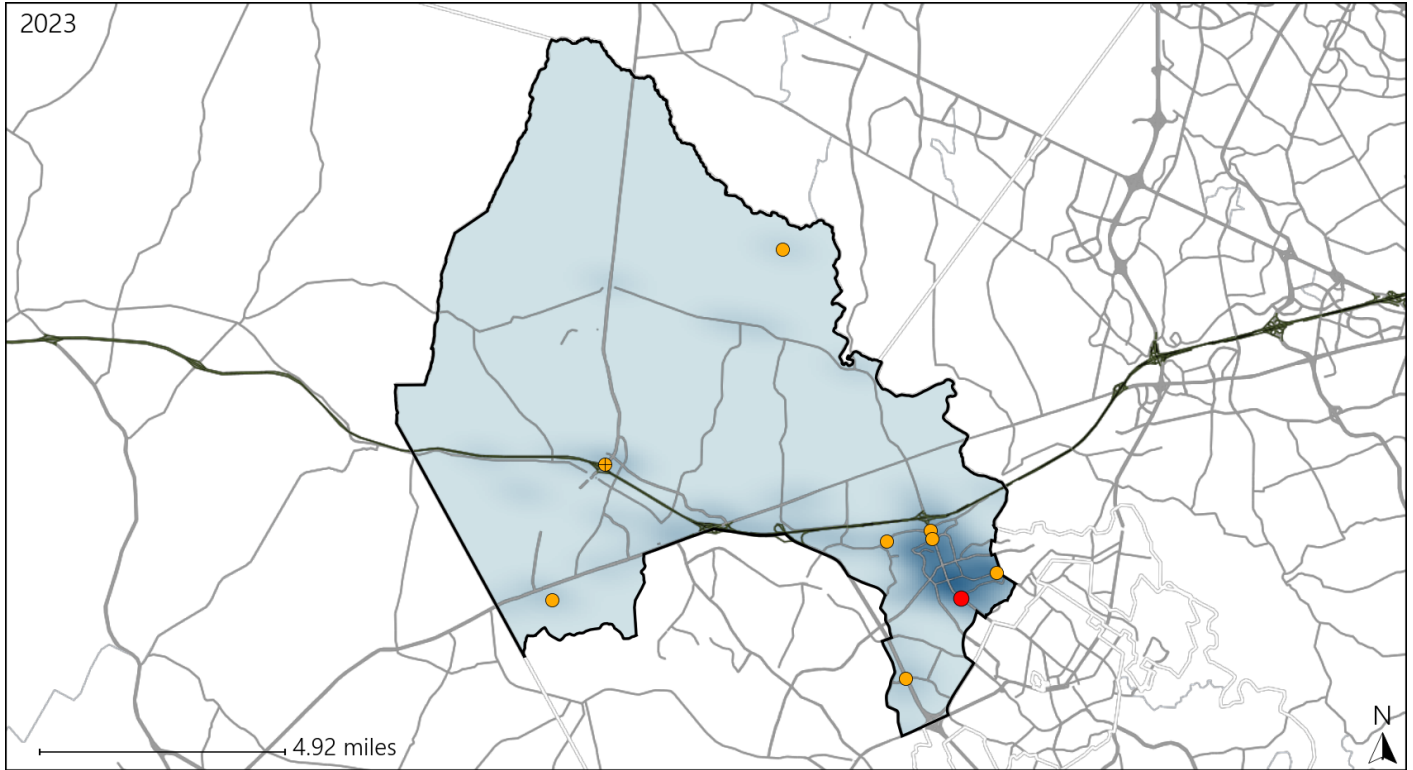


Available Crash Data - Calendar Year (CY)	CY 2020	CY 2021	CY 2022	CY 2023
Total Crashes	1021	1184	1352	1352
Fatal Crashes	4	5	8	6
Injury Crashes	262	321	327	363

Virginia House District 21 Alcohol Crash Statistics

Report Generated May, 2024

	Count	Highest Time Period(s)	Highest Day(s)	Highest Month(s)
Fatal Crashes	1	9:00pm - 11:59pm	Saturday	April
Resulting Fatalities	1	(100%)	(100%)	(100%)
Serious Injury Crashes	8	6:00pm - 8:59pm	Friday - Saturday	April
		(38%)	(50%)	(38%)



House District 21 Alcohol-Related Crashes

Interstate Crashes Non-interstate Crashes
 ● Fatal ● Fatal
 ⊕ Serious Injury ⊕ Serious Injury

The blue gradient represents the density of all alcohol-related crashes.

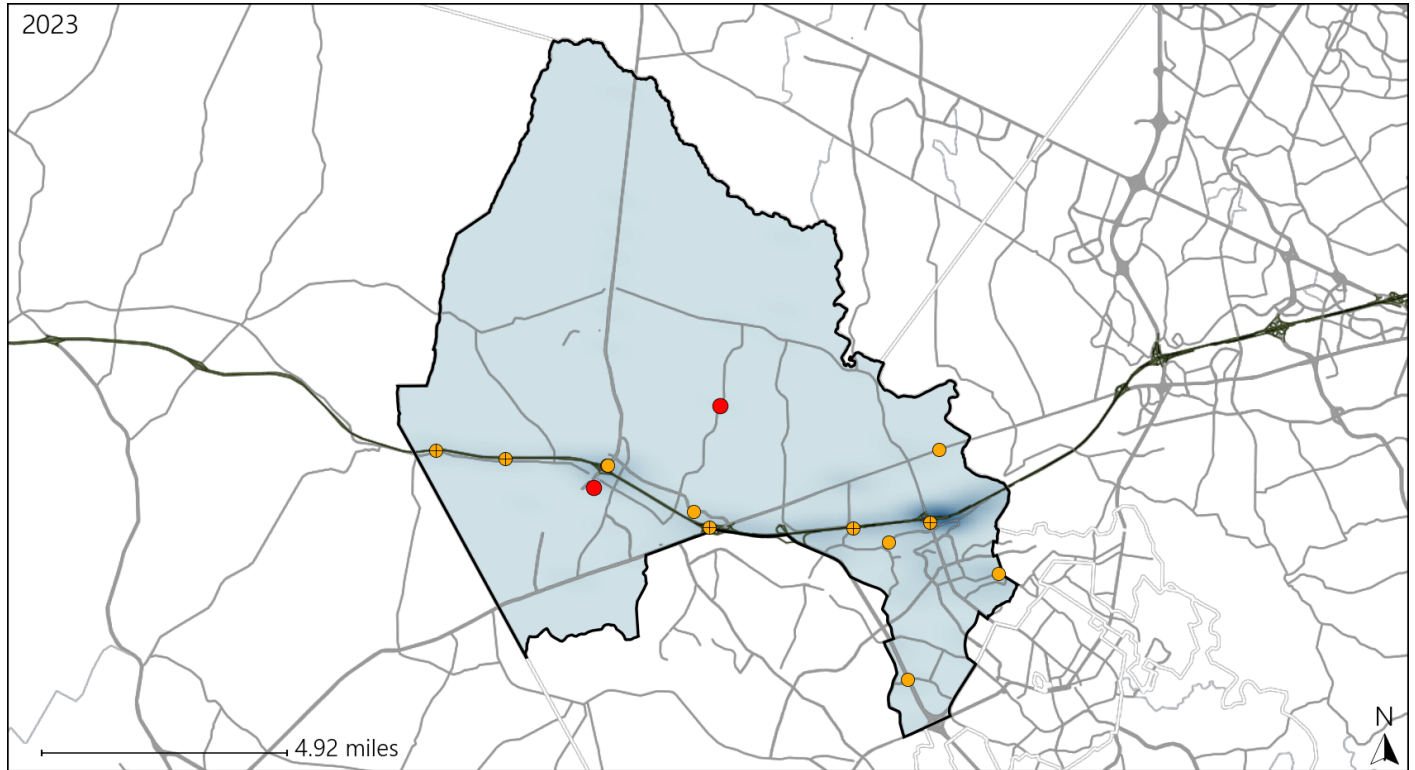


Available Crash Data - Calendar Year (CY)	CY 2020	CY 2021	CY 2022	CY 2023
Total Crashes	1021	1184	1352	1352
Fatal Crashes	4	5	8	6
Injury Crashes	262	321	327	363
Alcohol-Related Fatal Crashes	1	1	3	1
Percent of Alcohol-Related Fatal Crashes to Total Fatal Crashes	25%	20%	38%	17%
Alcohol-Related Injury Crashes	24	26	17	27
Percent of Alcohol-Related Injury Crashes to Total Injury Crashes	9%	8%	5%	7%

Virginia House District 21 Speed Crash Statistics

Report Generated May, 2024

	Count	Highest Time Period(s)	Highest Day(s)	Highest Month(s)
Fatal Crashes	2	6:00pm - 8:59pm	Monday • Saturday	August • February
Resulting Fatalities	2	Midnight - 2:59am (100%)	(100%)	(100%)
Serious Injury Crashes	12	6:00pm - 8:59pm (33%)	Sunday (25%)	April (25%)



House District 21 Speed-Related Crashes

Interstate Crashes

Non-interstate Crashes

● Fatal

● Fatal

● Serious Injury

● Serious Injury

The blue gradient represents the density of all speed-related crashes.

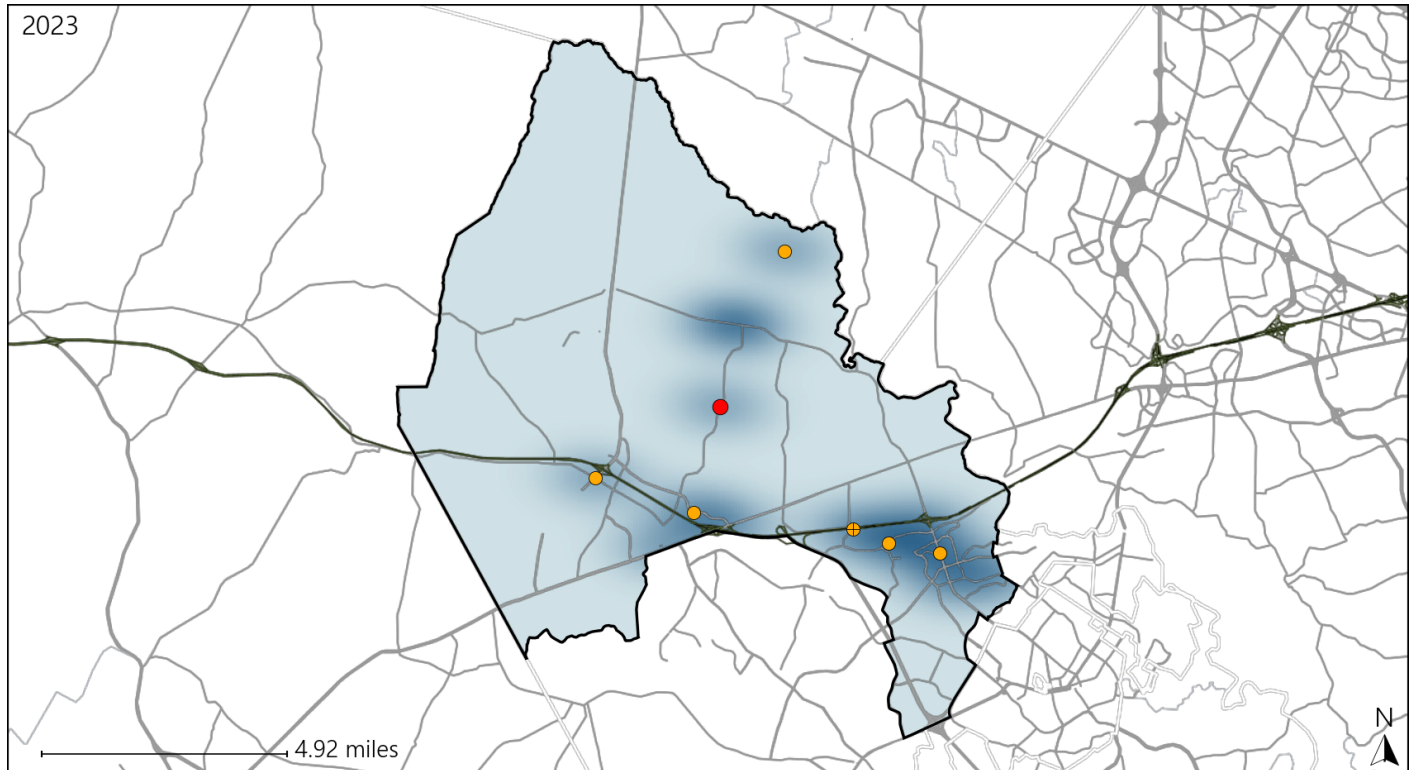


Available Crash Data - Calendar Year (CY)	CY 2020	CY 2021	CY 2022	CY 2023
Total Crashes	1021	1184	1352	1352
Fatal Crashes	4	5	8	6
Injury Crashes	262	321	327	363
Speed-Related Fatal Crashes	2	2	1	2
Percent of Speed-Related Fatal Crashes to Total Fatal Crashes	50%	40%	13%	33%
Speed-Related Injury Crashes	55	73	64	62
Percent of Speed-Related Injury Crashes to Total Injury Crashes	21%	23%	20%	17%

Virginia House District 21 Unrestrained Crash Statistics

Report Generated May, 2024

	Count	Highest Time Period(s)	Highest Day(s)	Highest Month(s)
Fatal Crashes	1	Midnight - 2:59am	Saturday	August
Unrestrained Fatalities	1	(100%)	(100%)	(100%)
Serious Injury Crashes	6	6:00pm - 8:59pm	Friday	May
		(33%)	(50%)	(33%)



House District 21 Unrestrained-Related Crashes

Interstate Crashes

Non-interstate Crashes

- Fatal
- Serious Injury

- Fatal
- Serious Injury

The blue gradient represents the density of all unrestrained-related crashes.

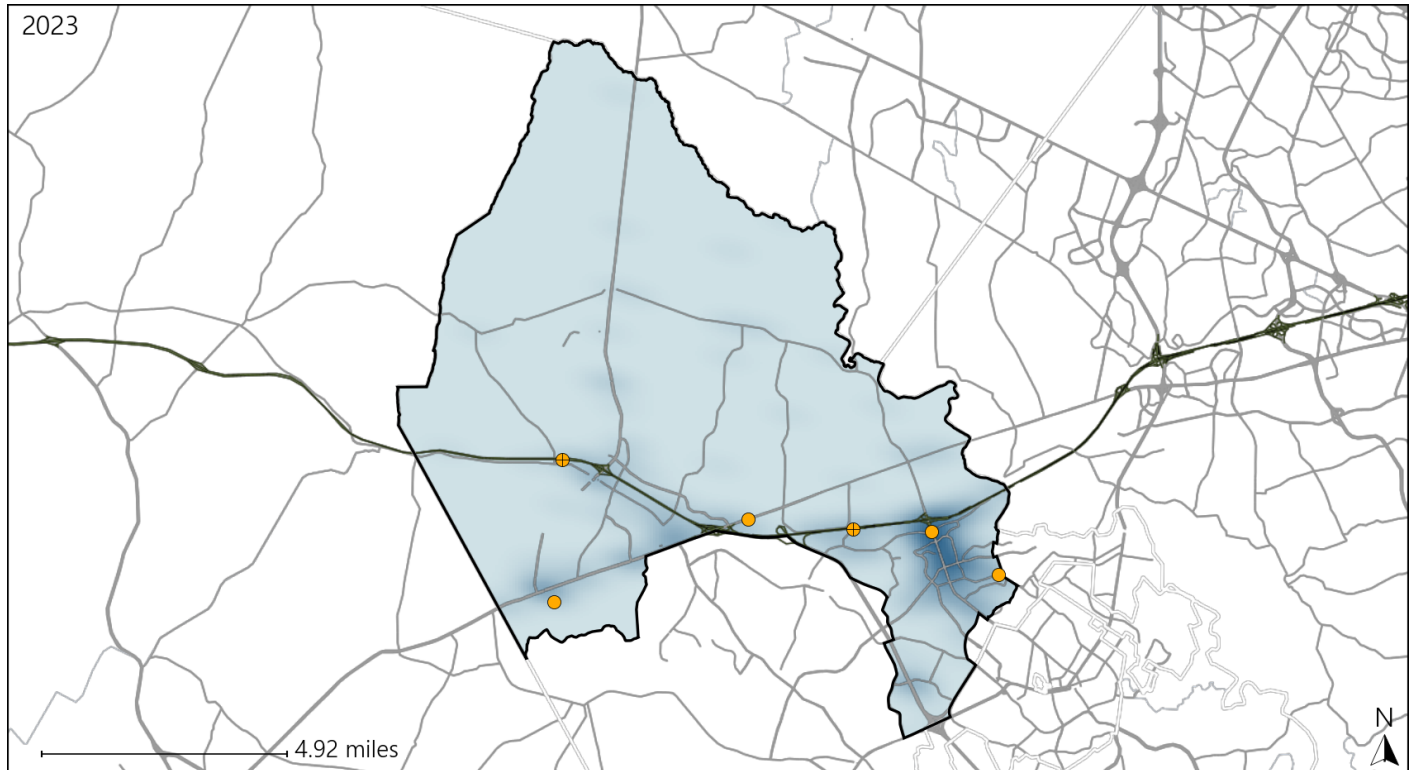


Available Crash Data - Calendar Year (CY)	CY 2020	CY 2021	CY 2022	CY 2023
Total Crashes	1021	1184	1352	1352
Fatalities	4	5	8	6
Injuries	443	539	573	602
Unrestrained Fatalities	0	1	1	1
Percent of Unrestrained Fatalities to Total Fatalities	0%	20%	13%	17%
Unrestrained Injuries	22	27	21	19
Percent of Unrestrained Injuries to Total Injuries	5%	5%	4%	3%

Virginia House District 21 Distracted Driving Crash Statistics

Report Generated May, 2024

	Count	Highest Time Period(s)	Highest Day(s)	Highest Month(s)
Fatal Crashes	0	-	-	-
Resulting Fatalities	0	-	-	-
Serious Injury Crashes	6	Noon - 2:59pm (33%)	Sunday (33%)	August (33%)



House District 21 Distracted Driving-Related Crashes

Interstate Crashes

- Fatal
- Serious Injury

Non-interstate Crashes

- Fatal
- Serious Injury

The blue gradient represents the density of all distracted driving-related crashes.



Available Crash Data - Calendar Year (CY)	CY 2020	CY 2021	CY 2022	CY 2023
Total Crashes	1021	1184	1352	1352
Fatal Crashes	4	5	8	6
Injury Crashes	262	321	327	363
Distracted Driving-Related Fatal Crashes	0	0	0	0
Percent of Distracted Driving-Related Fatal Crashes to Total Fatal Crashes	0%	0%	0%	0%
Distracted Driving-Related Injury Crashes	56	76	81	85
Percent of Distracted Driving-Related Injury Crashes to Total Injury Crashes	21%	24%	25%	23%