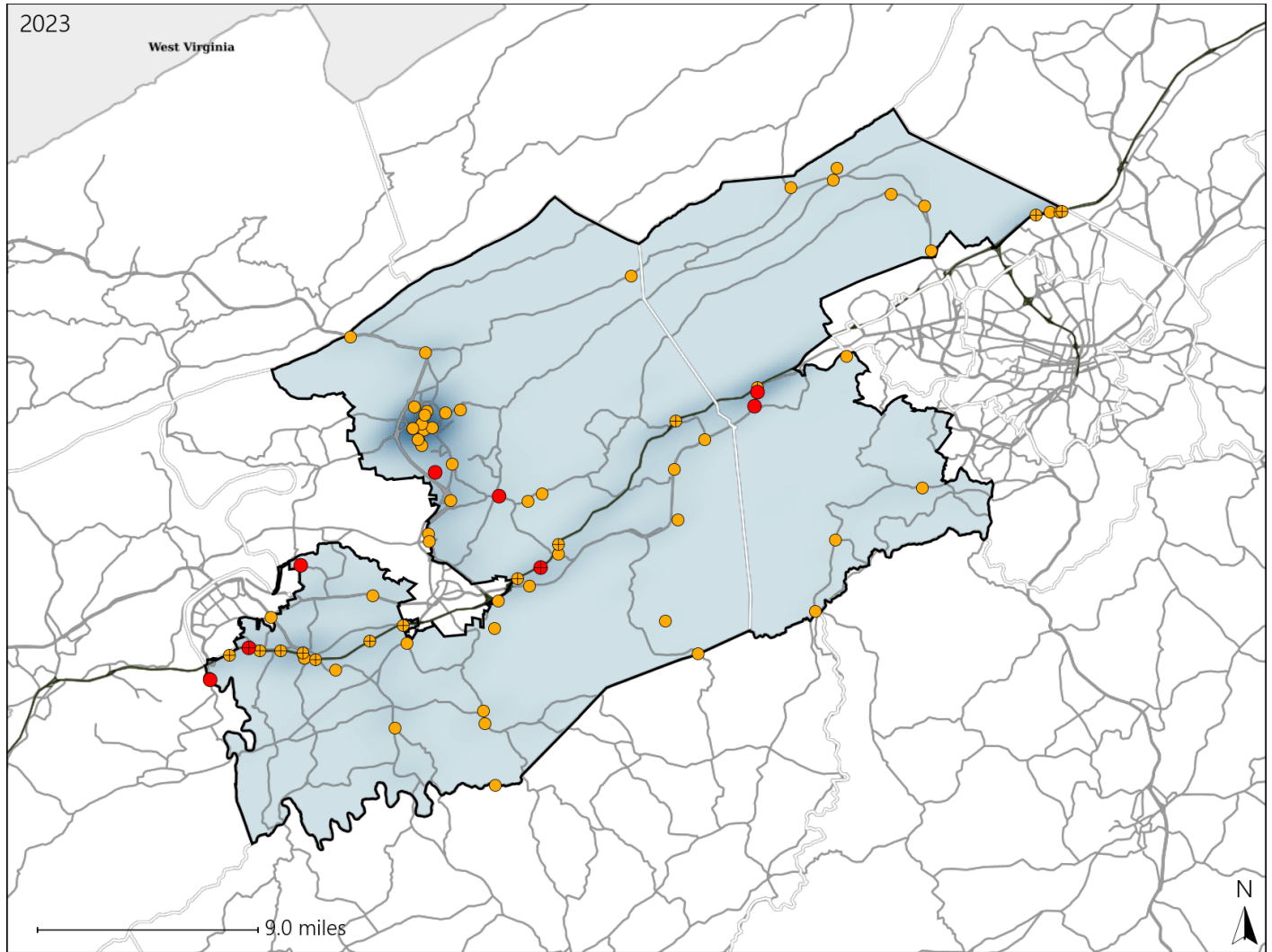


Virginia House District 41 Crash Statistics

Report Generated May, 2024

	Count	Highest Time Period(s)	Highest Day(s)	Highest Month(s)
Fatal Crashes	8	6:00am - 8:59am	Tuesday - Wednesday	November
Resulting Fatalities	12	(38%)	(50%)	(25%)
Serious Injury Crashes	71	3:00pm - 5:59pm	Monday	February
		(30%)	(18%)	(15%)



House District 41 Crashes

Interstate Crashes

Non-interstate Crashes

- Fatal
- Serious Injury

- Fatal
- Serious Injury

The blue gradient represents the density of all crashes.

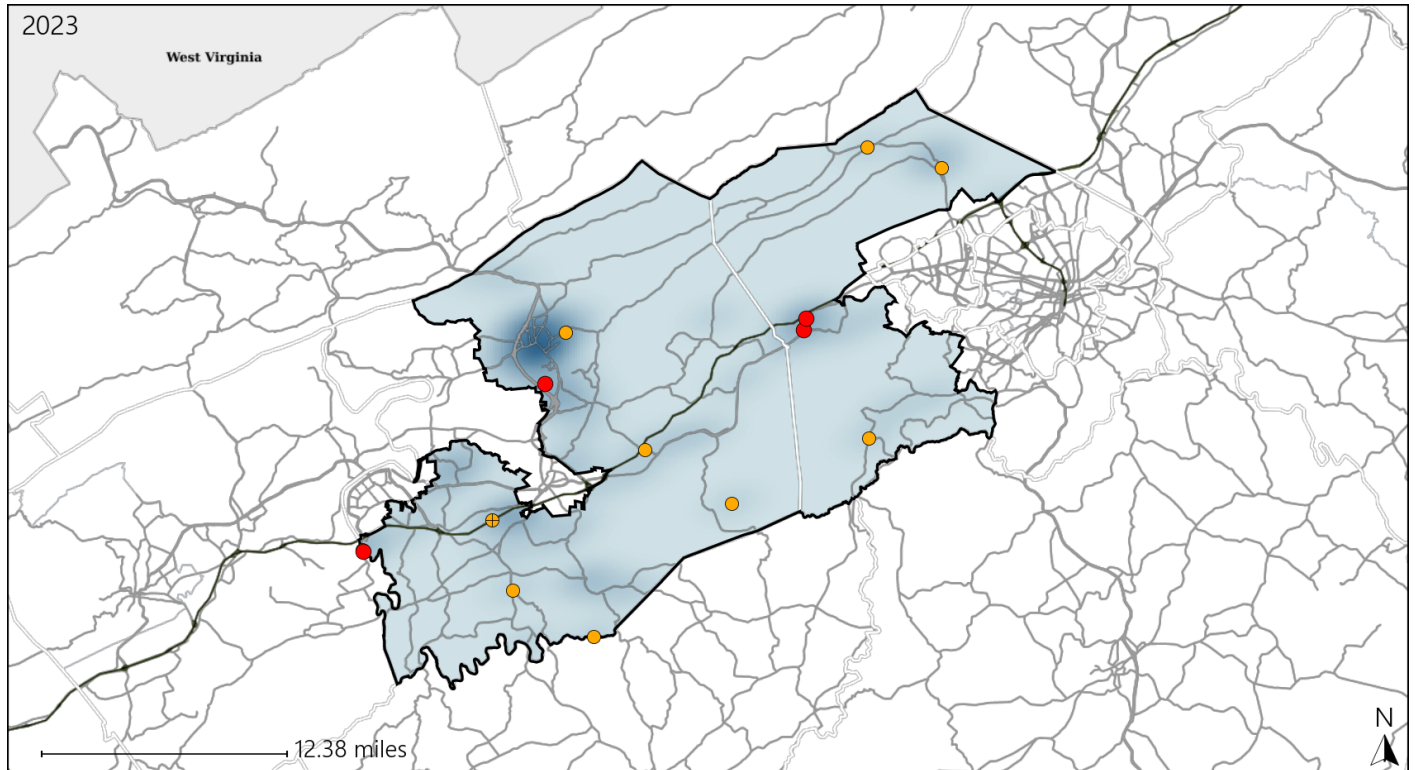


Available Crash Data - Calendar Year (CY)	CY 2020	CY 2021	CY 2022	CY 2023
Total Crashes	1186	1368	1514	1462
Fatal Crashes	11	7	8	8
Injury Crashes	429	484	526	502

Virginia House District 41 Alcohol Crash Statistics

Report Generated May, 2024

	Count	Highest Time Period(s)	Highest Day(s)	Highest Month(s)
Fatal Crashes	4	6:00am - 8:59am	Saturday • Sunday	August • January
Resulting Fatalities	5	(50%)	(50%)	(50%)
Serious Injury Crashes	10	6:00pm - 8:59pm	Monday	February
		(40%)	(30%)	(20%)



House District 41 Alcohol-Related Crashes

Interstate Crashes

Non-interstate Crashes

- Fatal
- Serious Injury

- Fatal
- Serious Injury

The blue gradient represents the density of all alcohol-related crashes.

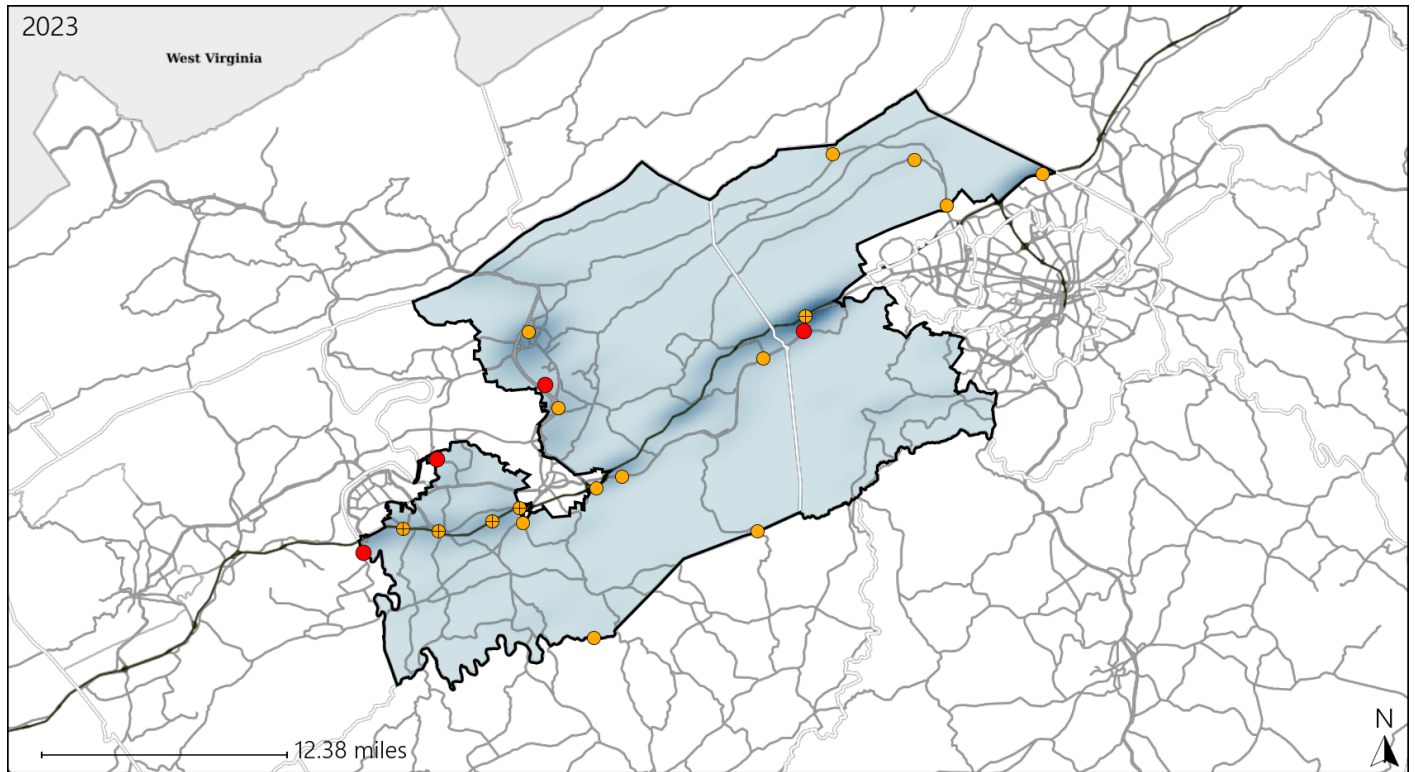


Available Crash Data - Calendar Year (CY)	CY 2020	CY 2021	CY 2022	CY 2023
Total Crashes	1186	1368	1514	1462
Fatal Crashes	11	7	8	8
Injury Crashes	429	484	526	502
Alcohol-Related Fatal Crashes	2	0	3	4
Percent of Alcohol-Related Fatal Crashes to Total Fatal Crashes	18%	0%	38%	50%
Alcohol-Related Injury Crashes	43	43	49	51
Percent of Alcohol-Related Injury Crashes to Total Injury Crashes	10%	9%	9%	10%

Virginia House District 41 Speed Crash Statistics

Report Generated May, 2024

	Count	Highest Time Period(s)	Highest Day(s)	Highest Month(s)
Fatal Crashes	4	6:00am - 8:59am	Saturday • Sunday	January • November
Resulting Fatalities	5	(50%)	(50%)	(50%)
Serious Injury Crashes	17	9:00am - 11:59am Noon - 2:59pm	Monday	February
		(48%)	(29%)	(29%)



House District 41 Speed-Related Crashes

Interstate Crashes

- Fatal
- ⊕ Serious Injury

Non-interstate Crashes

- Fatal
- Serious Injury

The blue gradient represents the density of all speed-related crashes.

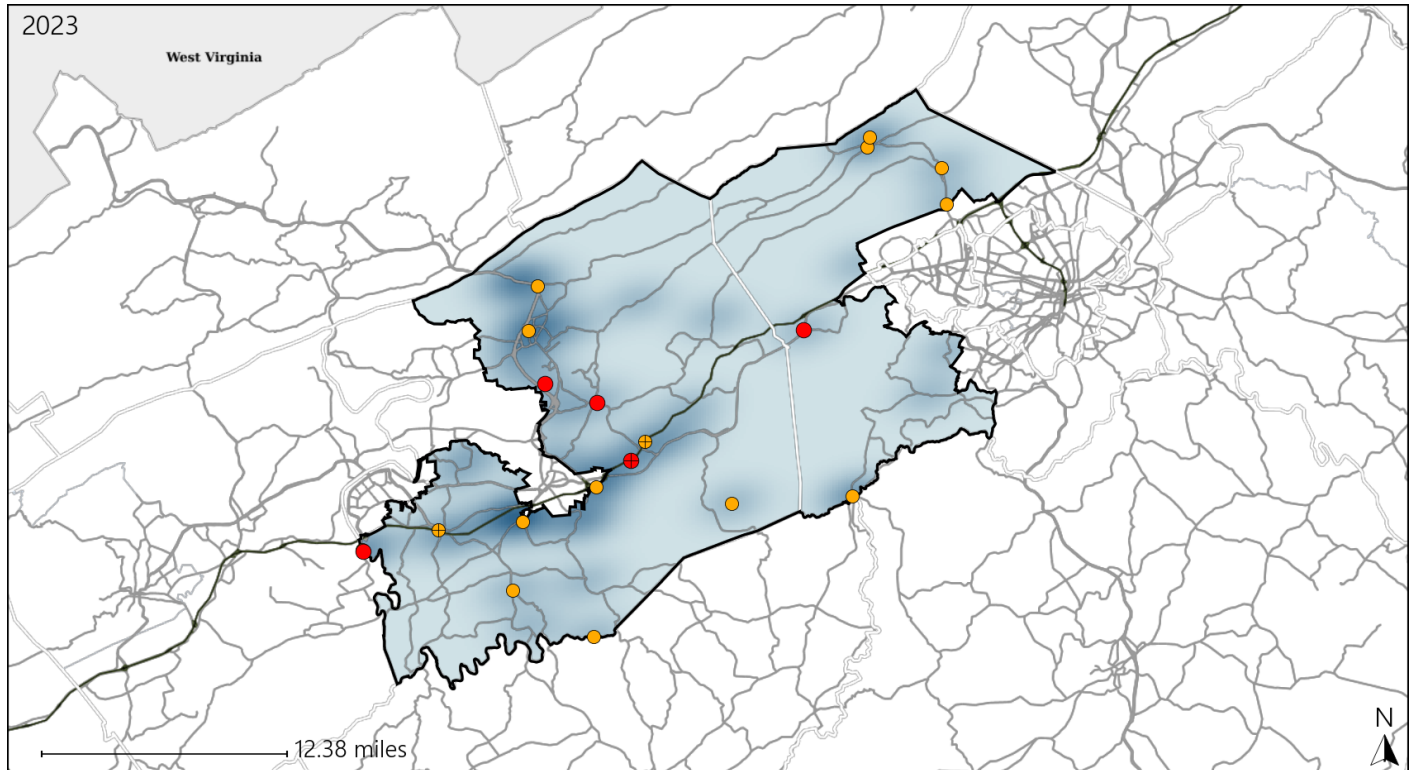


Available Crash Data - Calendar Year (CY)	CY 2020	CY 2021	CY 2022	CY 2023
Total Crashes	1186	1368	1514	1462
Fatal Crashes	11	7	8	8
Injury Crashes	429	484	526	502
Speed-Related Fatal Crashes	7	2	2	4
Percent of Speed-Related Fatal Crashes to Total Fatal Crashes	64%	29%	25%	50%
Speed-Related Injury Crashes	84	104	117	114
Percent of Speed-Related Injury Crashes to Total Injury Crashes	20%	21%	22%	23%

Virginia House District 41 Unrestrained Crash Statistics

Report Generated May, 2024

	Count	Highest Time Period(s)	Highest Day(s)	Highest Month(s)
Fatal Crashes	5	6:00am - 8:59am	Tuesday	January • May
Unrestrained Fatalities	8	(60%)	(40%)	(40%)
Serious Injury Crashes	15	3:00pm - 5:59pm	Wednesday	April
		(40%)	(27%)	(20%)



House District 41 Unrestrained-Related Crashes

Interstate Crashes

- Fatal
- Serious Injury

Non-interstate Crashes

- Fatal
- Serious Injury

The blue gradient represents the density of all unrestrained-related crashes.

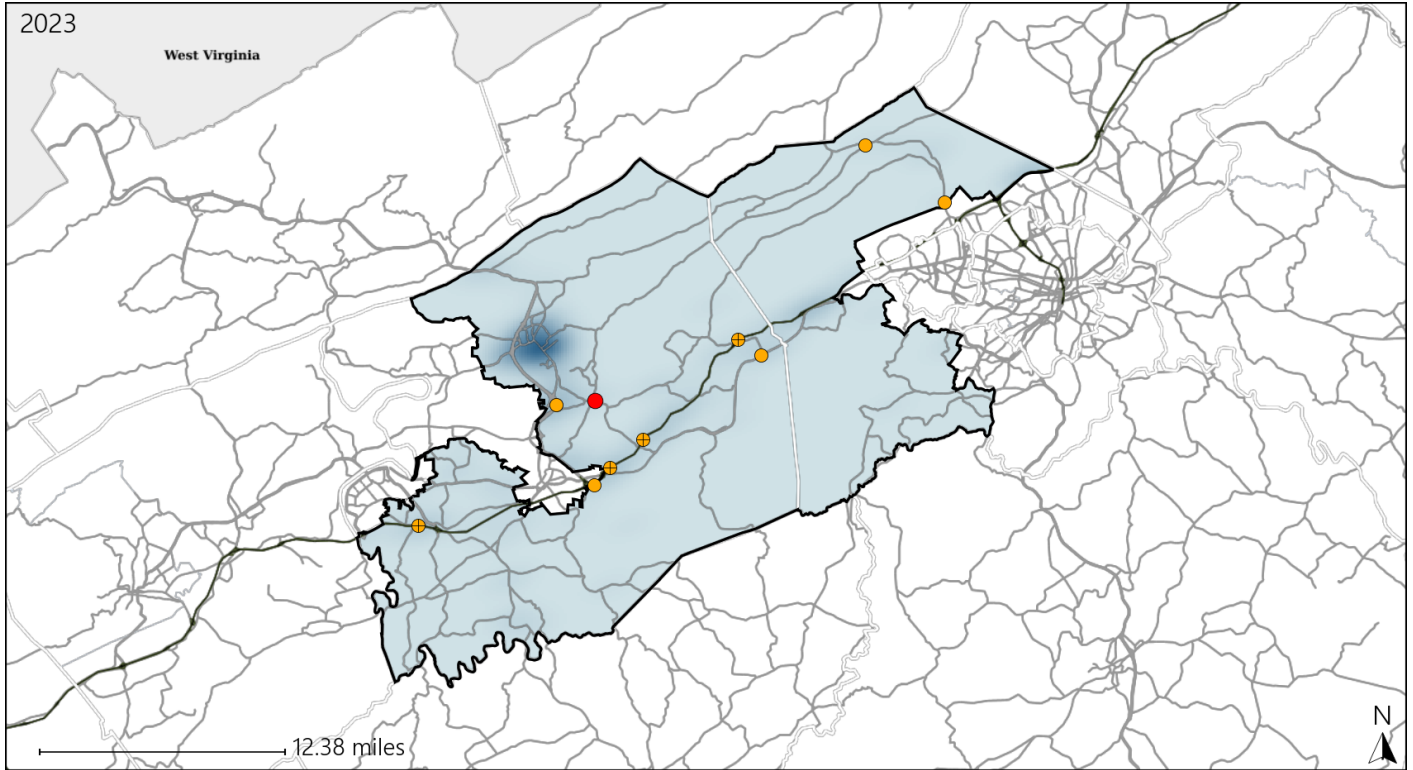


Available Crash Data - Calendar Year (CY)	CY 2020	CY 2021	CY 2022	CY 2023
Total Crashes	1186	1368	1514	1462
Fatalities	13	8	8	12
Injuries	581	622	722	698
Unrestrained Fatalities	3	2	2	8
Percent of Unrestrained Fatalities to Total Fatalities	23%	25%	25%	67%
Unrestrained Injuries	40	51	32	49
Percent of Unrestrained Injuries to Total Injuries	7%	8%	4%	7%

Virginia House District 41 Distracted Driving Crash Statistics

Report Generated May, 2024

	Count	Highest Time Period(s)	Highest Day(s)	Highest Month(s)
Fatal Crashes	1	6:00am - 8:59am	Wednesday	November
Resulting Fatalities	1	(100%)	(100%)	(100%)
Serious Injury Crashes	9	3:00pm - 5:59pm	Monday • Wednesday	July • November
		(44%)	(66%)	(44%)



House District 41 Distracted Driving-Related Crashes

- | | |
|--------------------|------------------------|
| Interstate Crashes | Non-interstate Crashes |
| Fatal | Fatal |
| Serious Injury | Serious Injury |

The blue gradient represents the density of all distracted driving-related crashes.



Available Crash Data - Calendar Year (CY)	CY 2020	CY 2021	CY 2022	CY 2023
Total Crashes	1186	1368	1514	1462
Fatal Crashes	11	7	8	8
Injury Crashes	429	484	526	502
Distracted Driving-Related Fatal Crashes	1	4	1	1
Percent of Distracted Driving-Related Fatal Crashes to Total Fatal Crashes	9%	57%	13%	13%
Distracted Driving-Related Injury Crashes	75	89	78	80
Percent of Distracted Driving-Related Injury Crashes to Total Injury Crashes	17%	18%	15%	16%