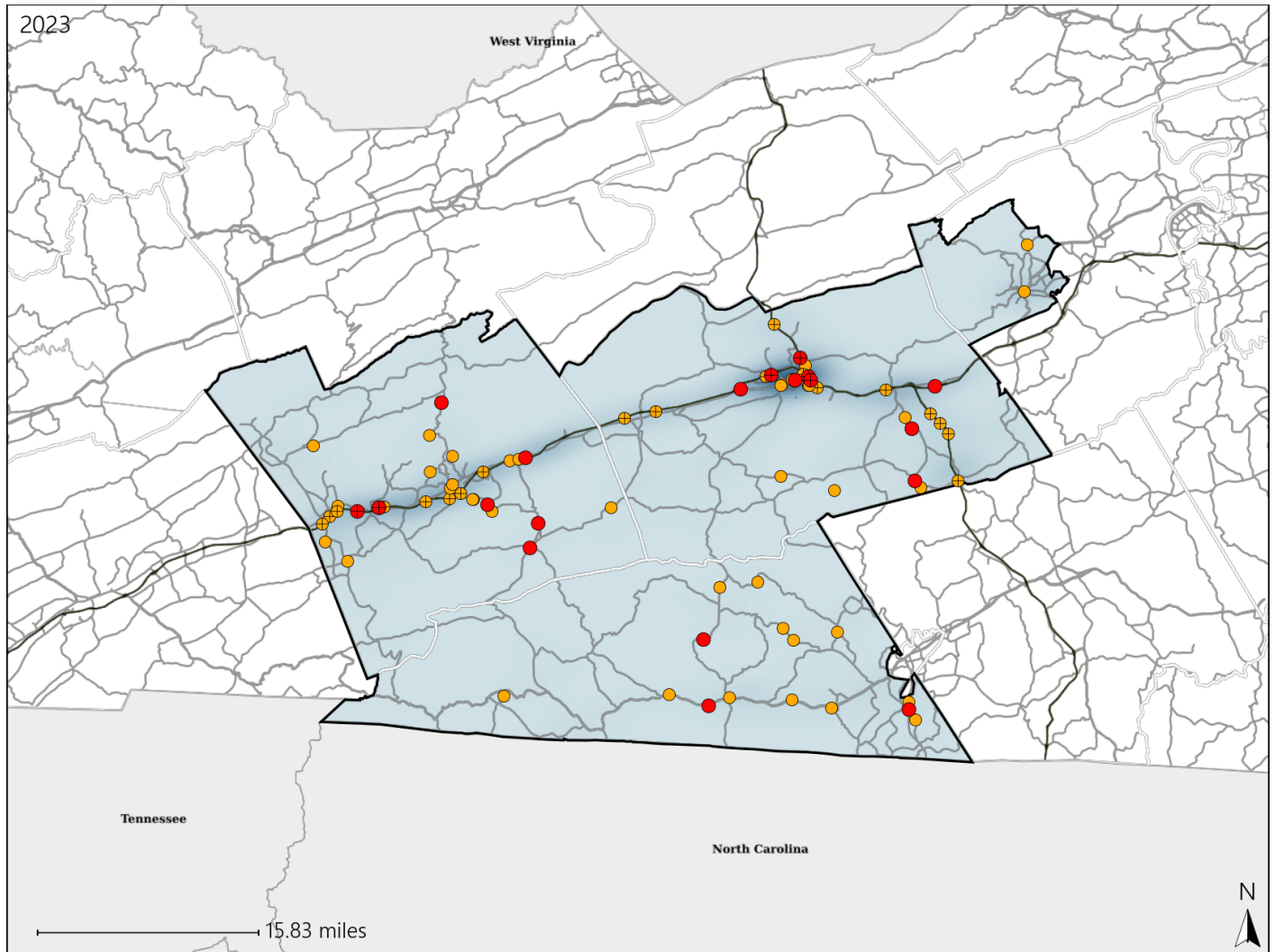


# Virginia House District 46 Crash Statistics

Report Generated May, 2024

	Count	Highest Time Period(s)	Highest Day(s)	Highest Month(s)
<b>Fatal Crashes</b>	<b>20</b>	6:00pm - 8:59pm	Friday • Thursday	April • November
<b>Resulting Fatalities</b>	<b>24</b>	(25%)	(60%)	(40%)
<b>Serious Injury Crashes</b>	<b>58</b>	6:00pm - 8:59pm 9:00am - 11:59am	Saturday	November
		(38%)	(22%)	(14%)



### House District 46 Crashes

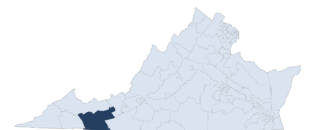
Interstate Crashes

- Fatal
- ⊕ Serious Injury

Non-interstate Crashes

- Fatal
- Serious Injury

The blue gradient represents the density of all crashes.

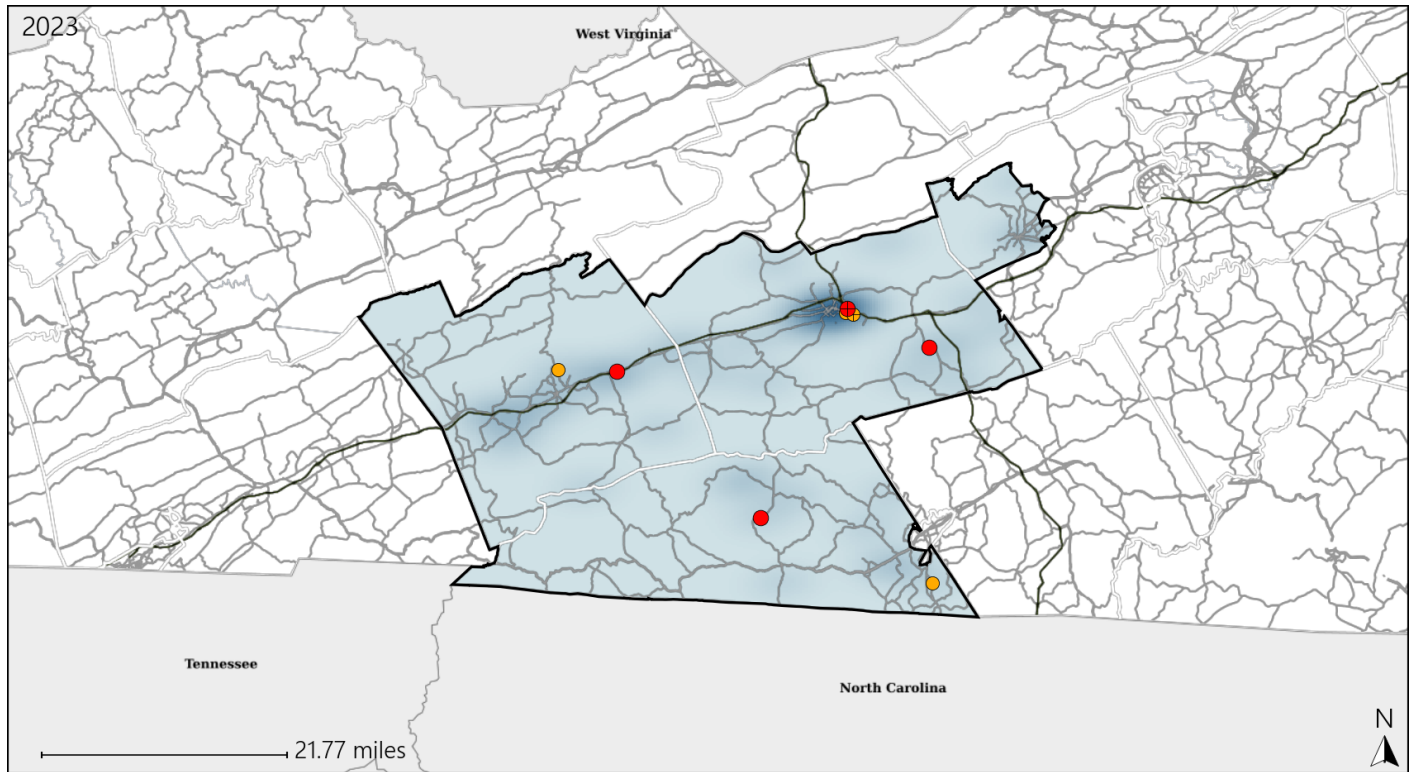


Available Crash Data - Calendar Year (CY)	CY 2020	CY 2021	CY 2022	CY 2023
Total Crashes	1151	1319	1463	1473
Fatal Crashes	15	18	15	20
Injury Crashes	320	312	342	314

# Virginia House District 46 Alcohol Crash Statistics

Report Generated May, 2024

	Count	Highest Time Period(s)	Highest Day(s)	Highest Month(s)
<b>Fatal Crashes</b>	<b>4</b>	<b>6:00pm - 8:59pm</b>	<b>Thursday</b>	<b>January • June</b>
<b>Resulting Fatalities</b>	<b>5</b>	<b>(50%)</b>	<b>(50%)</b>	<b>(50%)</b>
<b>Serious Injury Crashes</b>	<b>4</b>	<b>3:00pm - 5:59pm</b> <b>6:00pm - 8:59pm</b>	<b>Saturday</b>	<b>December • July</b>
		<b>(50%)</b>	<b>(50%)</b>	<b>(50%)</b>



## House District 46 Alcohol-Related Crashes

Interstate Crashes

Non-interstate Crashes

- Fatal
- ⊕ Serious Injury

- Fatal
- Serious Injury

The blue gradient represents the density of all alcohol-related crashes.

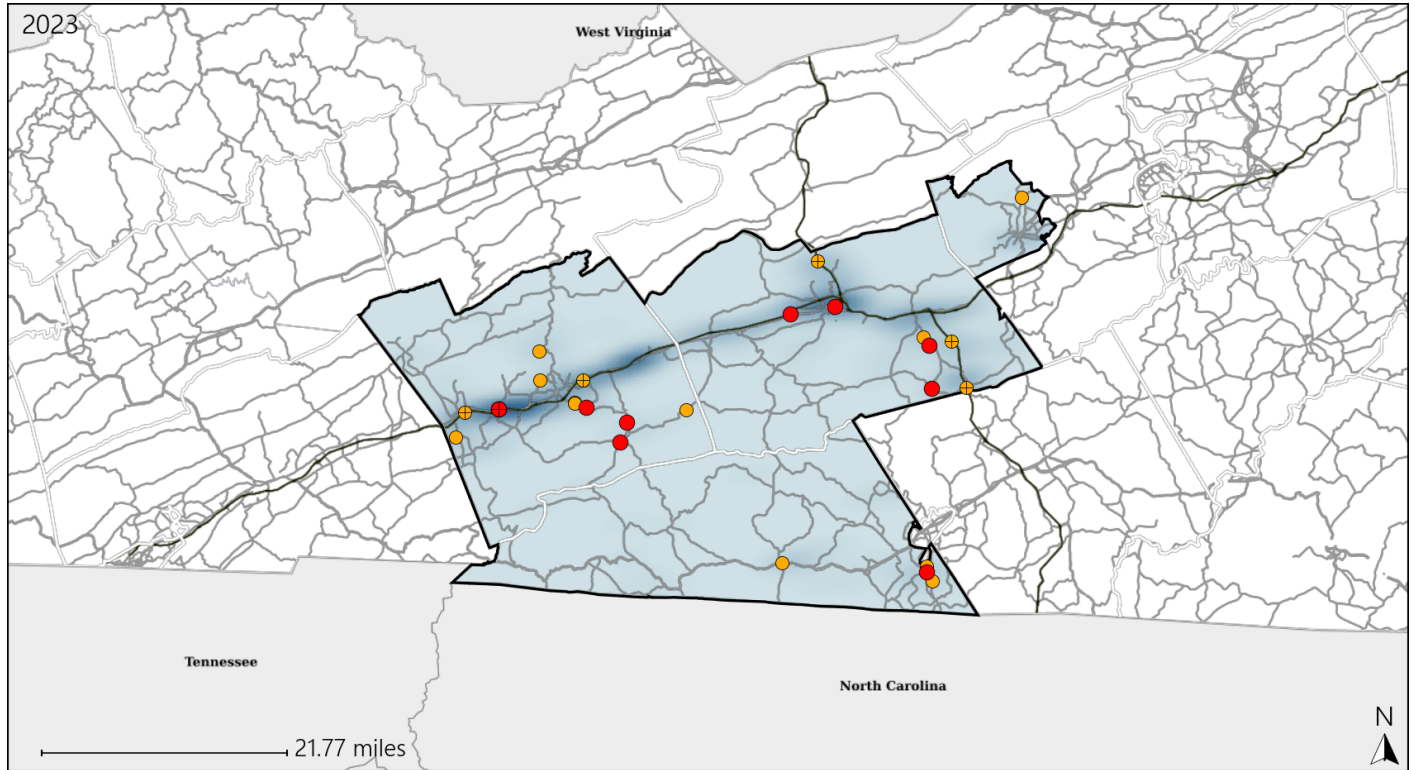


Available Crash Data - Calendar Year (CY)	CY 2020	CY 2021	CY 2022	CY 2023
Total Crashes	1151	1319	1463	1473
Fatal Crashes	15	18	15	20
Injury Crashes	320	312	342	314
Alcohol-Related Fatal Crashes	3	2	1	4
Percent of Alcohol-Related Fatal Crashes to Total Fatal Crashes	20%	11%	7%	20%
Alcohol-Related Injury Crashes	34	16	17	14
Percent of Alcohol-Related Injury Crashes to Total Injury Crashes	11%	5%	5%	4%

# Virginia House District 46 Speed Crash Statistics

Report Generated May, 2024

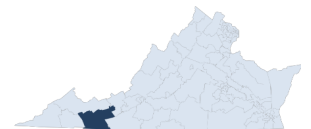
	Count	Highest Time Period(s)	Highest Day(s)	Highest Month(s)
<b>Fatal Crashes</b>	<b>10</b>	3:00pm - 5:59pm	Friday • Thursday	April • December
<b>Resulting Fatalities</b>	<b>12</b>	6:00am - 8:59am (40%)	(40%)	(40%)
<b>Serious Injury Crashes</b>	<b>17</b>	9:00pm - 11:59pm (24%)	Friday • Saturday (48%)	August (24%)



## House District 46 Speed-Related Crashes

- |                    |                        |
|--------------------|------------------------|
| Interstate Crashes | Non-interstate Crashes |
| ● Fatal            | ● Fatal                |
| ⊕ Serious Injury   | ⊕ Serious Injury       |

The blue gradient represents the density of all speed-related crashes.

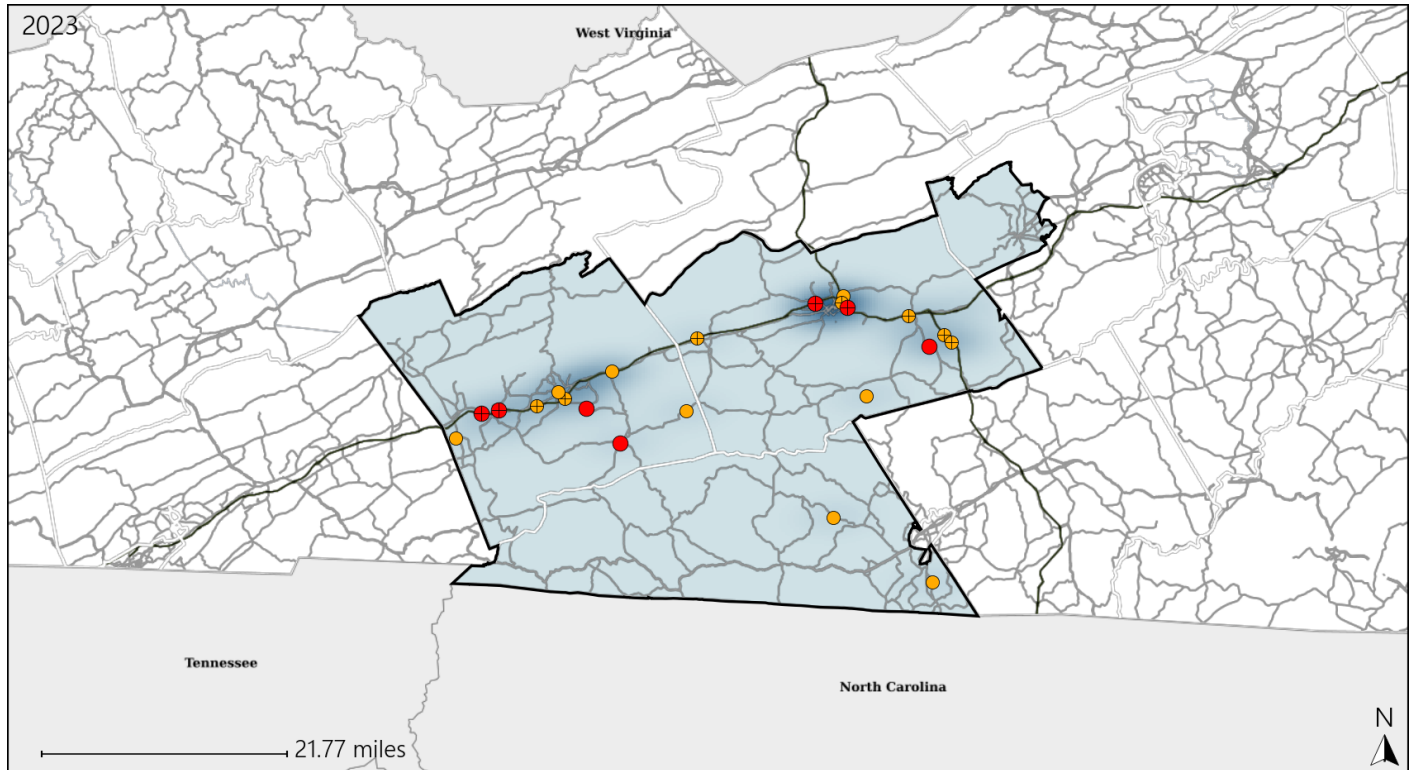


Available Crash Data - Calendar Year (CY)	CY 2020	CY 2021	CY 2022	CY 2023
Total Crashes	1151	1319	1463	1473
Fatal Crashes	15	18	15	20
Injury Crashes	320	312	342	314
Speed-Related Fatal Crashes	7	8	6	10
Percent of Speed-Related Fatal Crashes to Total Fatal Crashes	47%	44%	40%	50%
Speed-Related Injury Crashes	84	90	108	84
Percent of Speed-Related Injury Crashes to Total Injury Crashes	26%	29%	32%	27%

# Virginia House District 46 Unrestrained Crash Statistics

Report Generated May, 2024

	Count	Highest Time Period(s)	Highest Day(s)	Highest Month(s)
<b>Fatal Crashes</b>	<b>7</b>	<b>6:00pm - 8:59pm</b>	<b>Thursday</b>	<b>April - February</b>
<b>Unrestrained Fatalities</b>	<b>7</b>	<b>(43%)</b>	<b>(43%)</b>	<b>(28%)</b>
<b>Serious Injury Crashes</b>	<b>15</b>	<b>6:00pm - 8:59pm</b>	<b>Saturday</b>	<b>November</b>
		<b>(27%)</b>	<b>(33%)</b>	<b>(33%)</b>



## House District 46 Unrestrained-Related Crashes

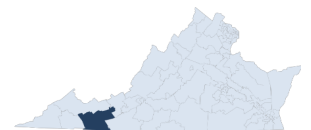
Interstate Crashes

Non-interstate Crashes

- Fatal
- Serious Injury

- Fatal
- Serious Injury

The blue gradient represents the density of all unrestrained-related crashes.

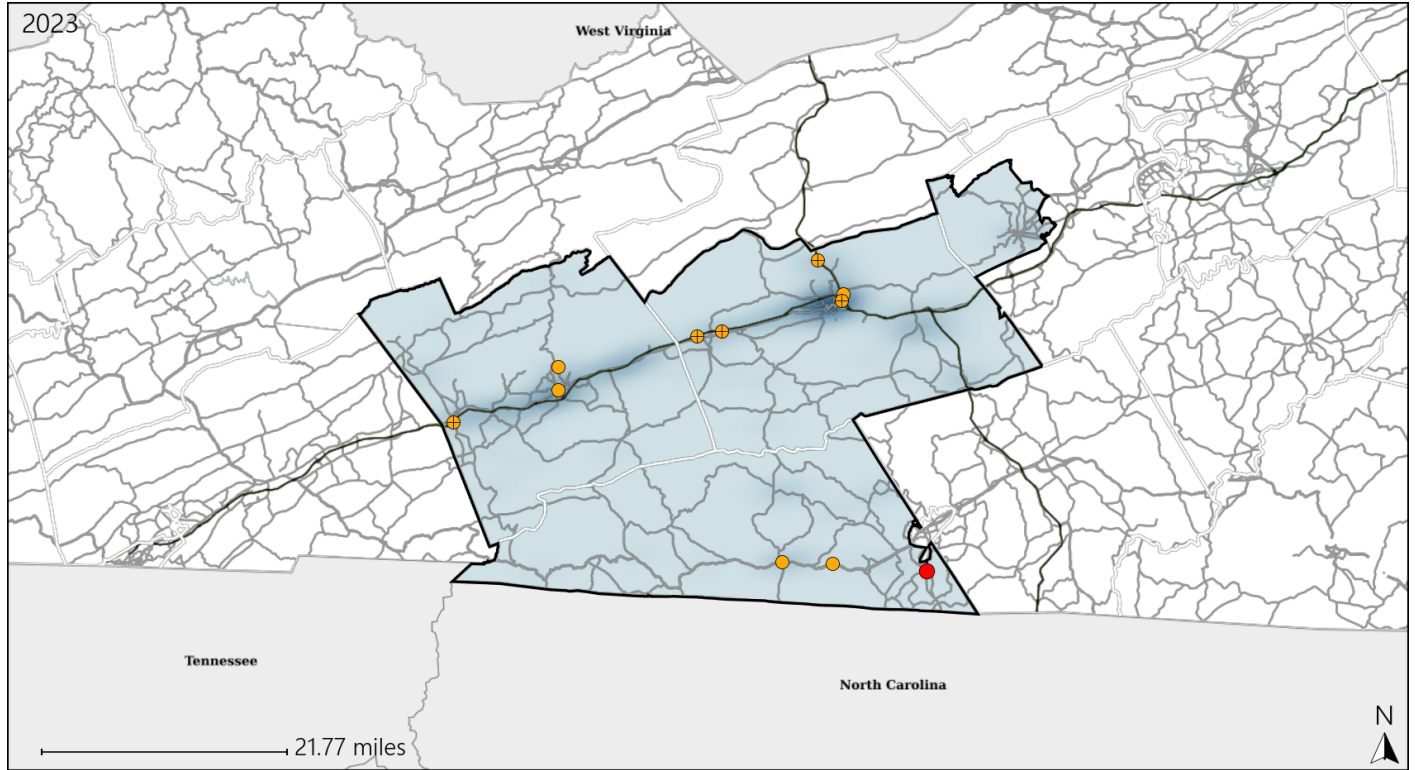


Available Crash Data - Calendar Year (CY)	CY 2020	CY 2021	CY 2022	CY 2023
<b>Total Crashes</b>	1151	1319	1463	1473
<b>Fatalities</b>	15	21	20	24
<b>Injuries</b>	447	426	474	447
<b>Unrestrained Fatalities</b>	7	8	6	7
<b>Percent of Unrestrained Fatalities to Total Fatalities</b>	47%	38%	30%	29%
<b>Unrestrained Injuries</b>	51	57	71	44
<b>Percent of Unrestrained Injuries to Total Injuries</b>	11%	13%	15%	10%

# Virginia House District 46 Distracted Driving Crash Statistics

Report Generated May, 2024

	Count	Highest Time Period(s)	Highest Day(s)	Highest Month(s)
<b>Fatal Crashes</b>	<b>1</b>	<b>Noon - 2:59pm</b>	<b>Thursday</b>	<b>May</b>
<b>Resulting Fatalities</b>	<b>2</b>	<b>(100%)</b>	<b>(100%)</b>	<b>(100%)</b>
<b>Serious Injury Crashes</b>	<b>10</b>	<b>6:00am - 8:59am</b>	<b>Saturday</b>	<b>August + July</b>
		<b>(40%)</b>	<b>(40%)</b>	<b>(40%)</b>



## House District 46 Distracted Driving-Related Crashes

Interstate Crashes

- Fatal
- Serious Injury

Non-interstate Crashes

- Fatal
- Serious Injury

The blue gradient represents the density of all distracted driving-related crashes.



Available Crash Data - Calendar Year (CY)	CY 2020	CY 2021	CY 2022	CY 2023
Total Crashes	1151	1319	1463	1473
Fatal Crashes	15	18	15	20
Injury Crashes	320	312	342	314
Distracted Driving-Related Fatal Crashes	0	1	1	1
Percent of Distracted Driving-Related Fatal Crashes to Total Fatal Crashes	0%	6%	7%	5%
Distracted Driving-Related Injury Crashes	52	50	51	49
Percent of Distracted Driving-Related Injury Crashes to Total Injury Crashes	16%	16%	15%	16%