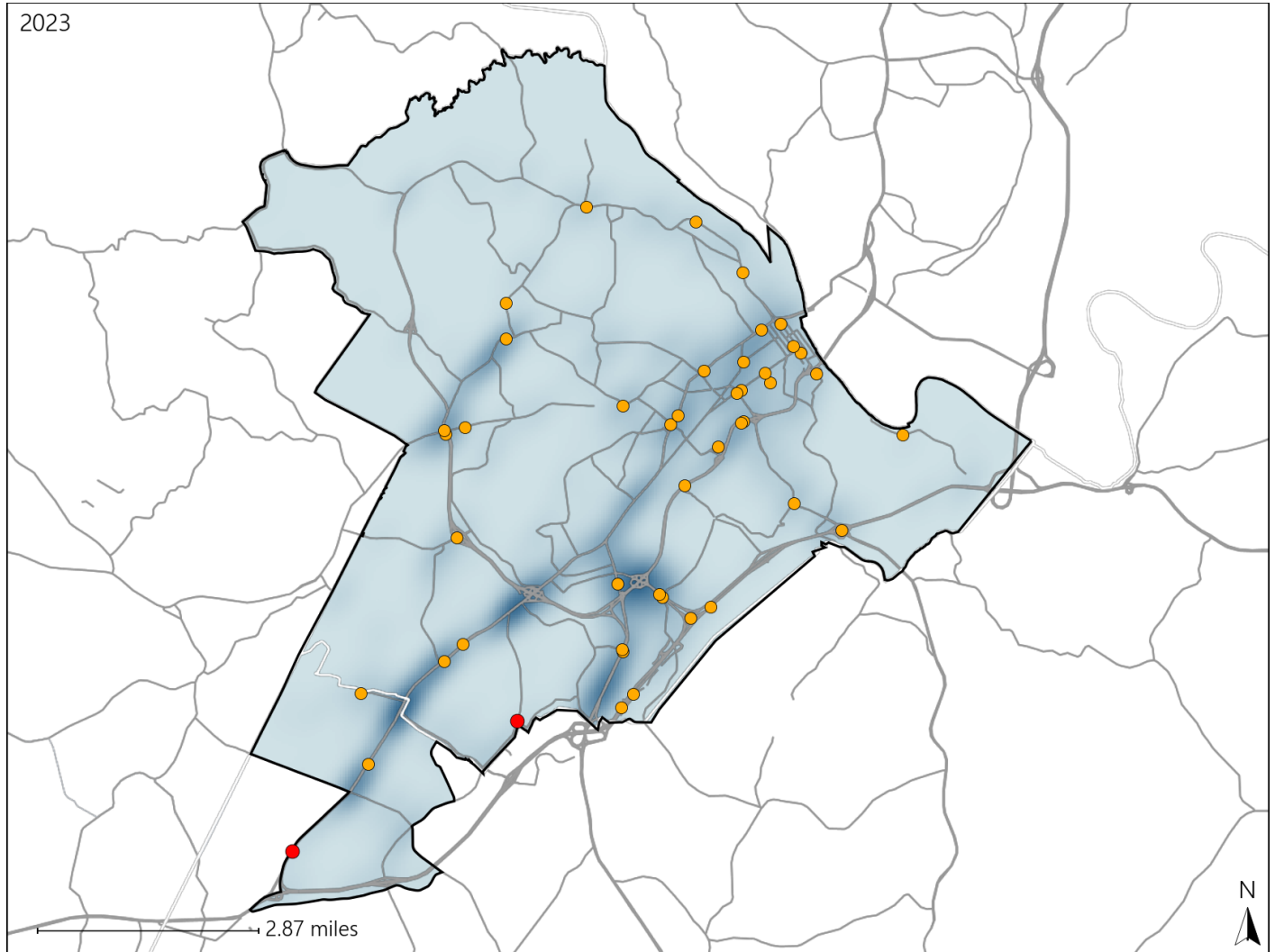


# Virginia House District 52 Crash Statistics

Report Generated May, 2024

	Count	Highest Time Period(s)	Highest Day(s)	Highest Month(s)
<b>Fatal Crashes</b>	<b>2</b>	<b>3:00pm - 5:59pm</b>	<b>Saturday • Sunday</b>	<b>October • September</b>
<b>Resulting Fatalities</b>	<b>2</b>	<b>Noon - 2:59pm</b> (100%)	<b>(100%)</b>	<b>(100%)</b>
<b>Serious Injury Crashes</b>	<b>43</b>	<b>Noon - 2:59pm</b> (21%)	<b>Tuesday</b> (23%)	<b>May</b> (14%)



### House District 52 Crashes

Interstate Crashes

- Fatal
- Serious Injury

Non-interstate Crashes

- Fatal
- Serious Injury

The blue gradient represents the density of all crashes.

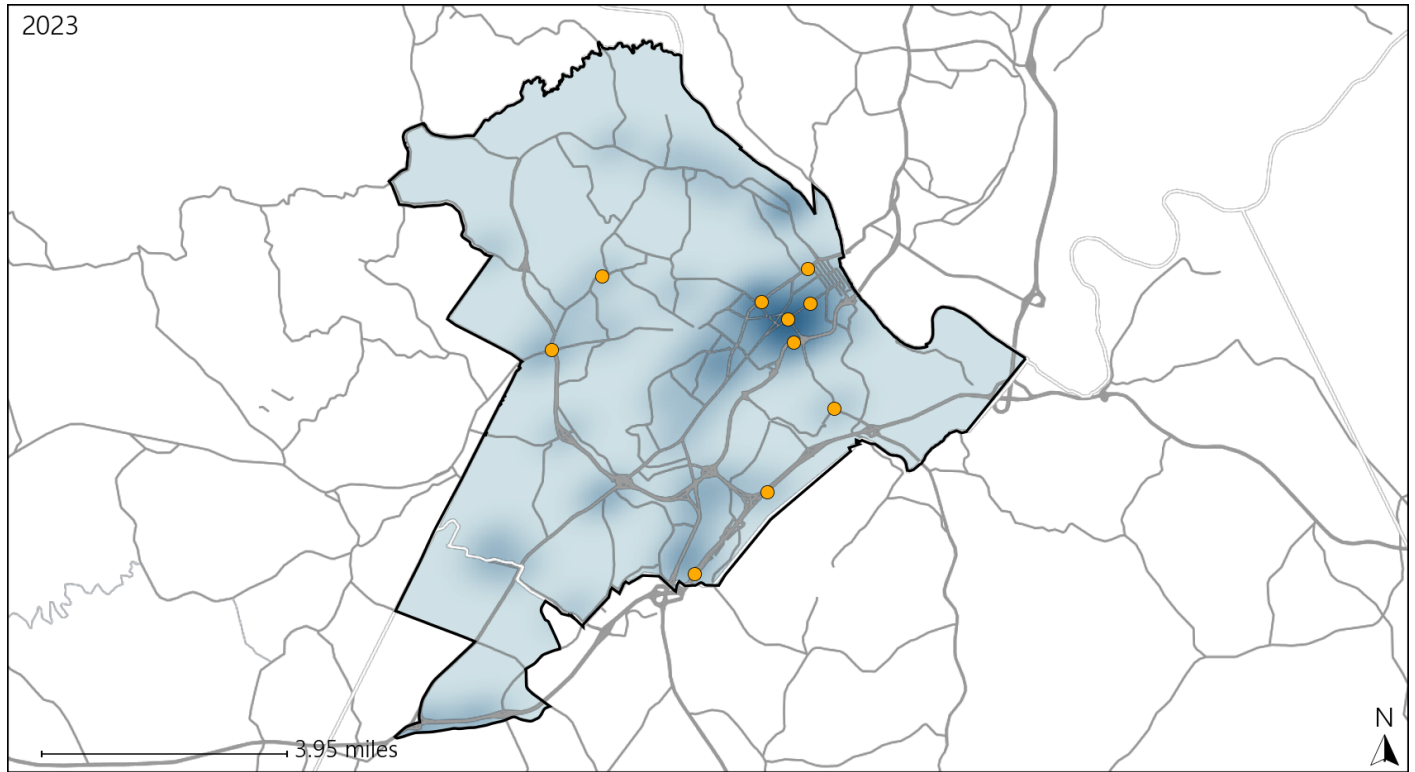


Available Crash Data - Calendar Year (CY)	CY 2020	CY 2021	CY 2022	CY 2023
Total Crashes	1207	1254	1282	1269
Fatal Crashes	7	9	4	2
Injury Crashes	433	447	419	435

# Virginia House District 52 Alcohol Crash Statistics

Report Generated May, 2024

	Count	Highest Time Period(s)	Highest Day(s)	Highest Month(s)
<b>Fatal Crashes</b>	<b>0</b>	-	-	-
<b>Resulting Fatalities</b>	<b>0</b>	-	-	-
<b>Serious Injury Crashes</b>	<b>10</b>	<b>6:00pm - 8:59pm</b> (40%)	<b>Sunday</b> (50%)	<b>August • February</b> (40%)



## House District 52 Alcohol-Related Crashes

Interstate Crashes                      Non-interstate Crashes  
 ● Fatal                                      ● Fatal  
 ● Serious Injury                          ● Serious Injury

The blue gradient represents the density of all alcohol-related crashes.

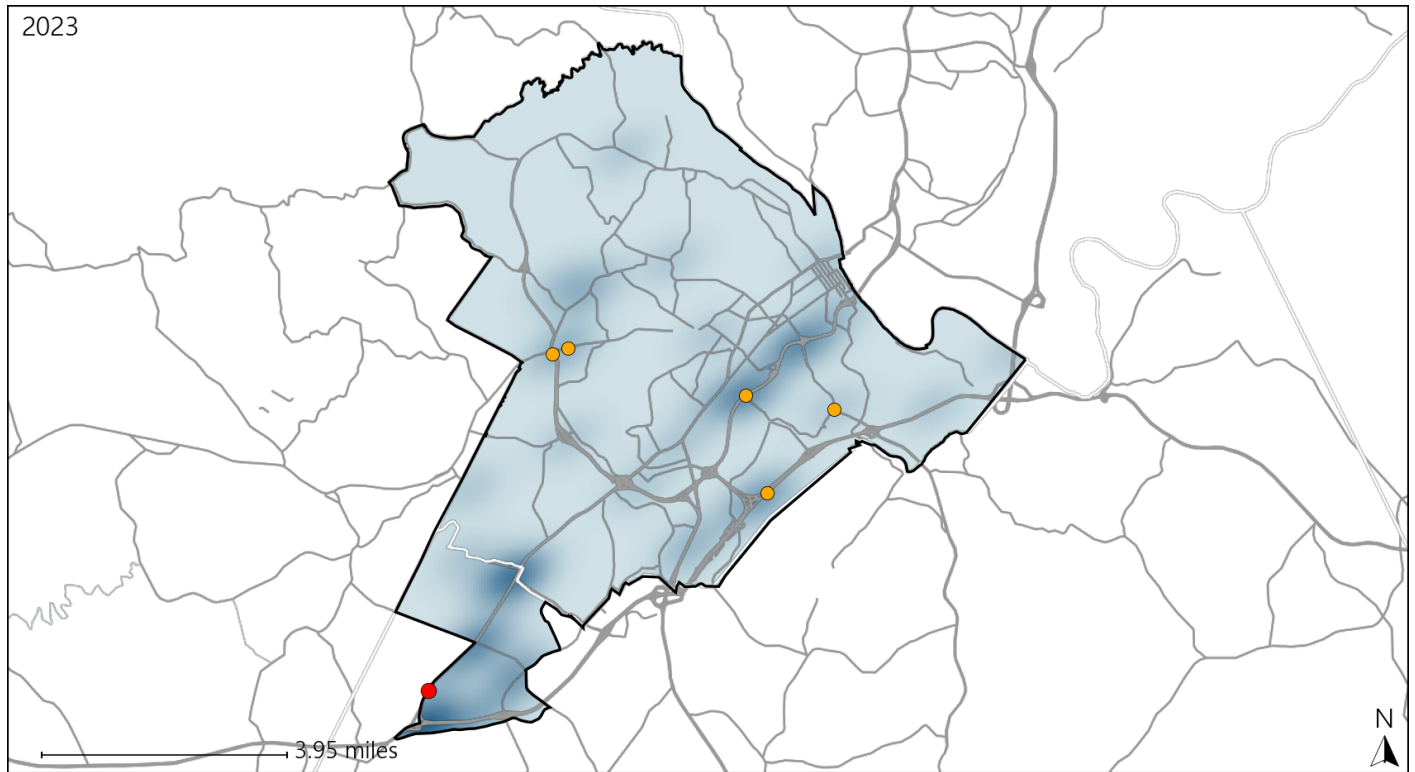


Available Crash Data - Calendar Year (CY)	CY 2020	CY 2021	CY 2022	CY 2023
Total Crashes	1207	1254	1282	1269
Fatal Crashes	7	9	4	2
Injury Crashes	433	447	419	435
Alcohol-Related Fatal Crashes	3	3	2	0
Percent of Alcohol-Related Fatal Crashes to Total Fatal Crashes	43%	33%	50%	0%
Alcohol-Related Injury Crashes	38	35	26	27
Percent of Alcohol-Related Injury Crashes to Total Injury Crashes	9%	8%	6%	6%

# Virginia House District 52 Speed Crash Statistics

Report Generated May, 2024

	Count	Highest Time Period(s)	Highest Day(s)	Highest Month(s)
<b>Fatal Crashes</b>	<b>1</b>	<b>3:00pm - 5:59pm</b>	<b>Saturday</b>	<b>October</b>
<b>Resulting Fatalities</b>	<b>1</b>	(100%)	(100%)	(100%)
<b>Serious Injury Crashes</b>	<b>5</b>	<b>3:00am - 5:59am</b> <b>3:00pm - 5:59pm</b>	<b>Friday • Sunday</b>	<b>April • August</b>
		(40%)	(80%)	(40%)



## House District 52 Speed-Related Crashes

Interstate Crashes

- Fatal
- Serious Injury

Non-interstate Crashes

- Fatal
- Serious Injury

The blue gradient represents the density of all speed-related crashes.

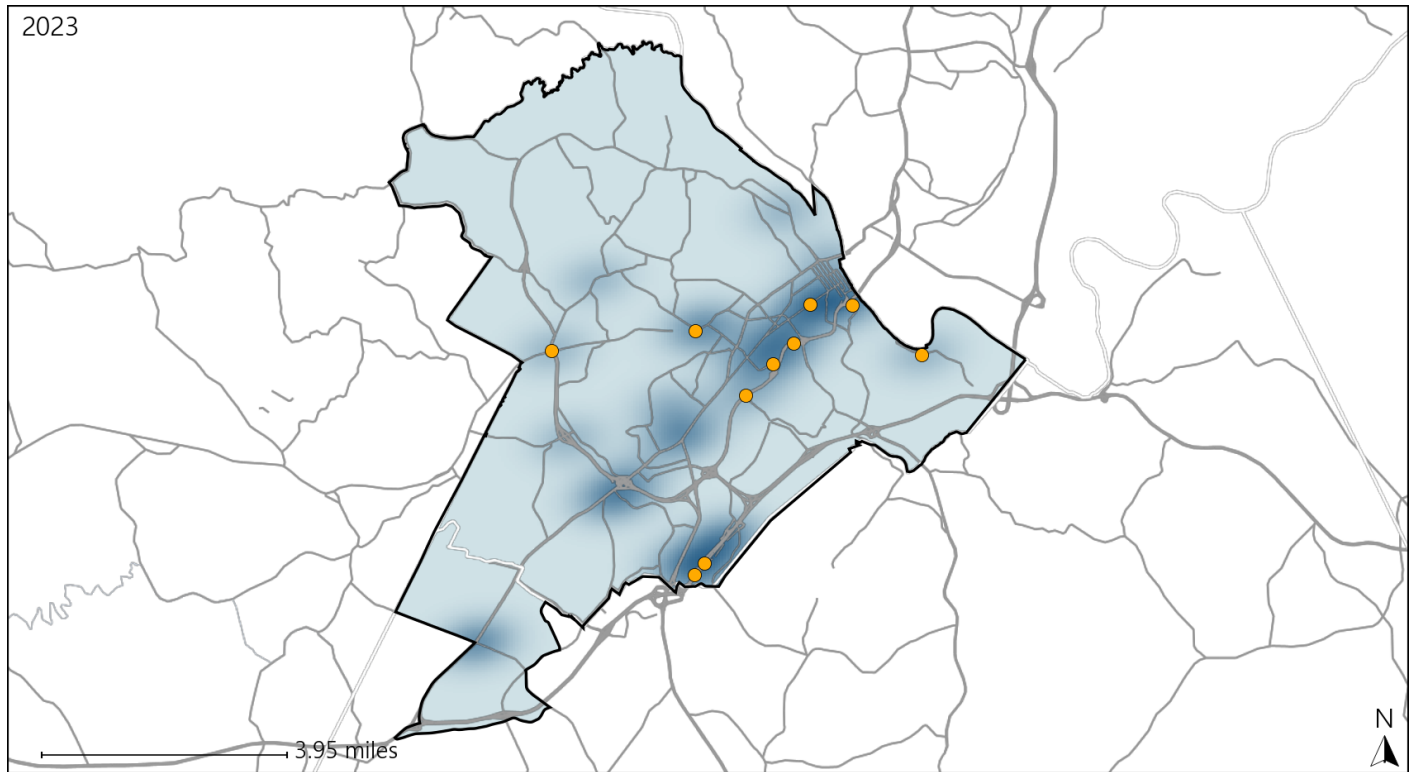


Available Crash Data - Calendar Year (CY)	CY 2020	CY 2021	CY 2022	CY 2023
Total Crashes	1207	1254	1282	1269
Fatal Crashes	7	9	4	2
Injury Crashes	433	447	419	435
Speed-Related Fatal Crashes	2	4	2	1
Percent of Speed-Related Fatal Crashes to Total Fatal Crashes	29%	44%	50%	50%
Speed-Related Injury Crashes	18	13	11	21
Percent of Speed-Related Injury Crashes to Total Injury Crashes	4%	3%	3%	5%

# Virginia House District 52 Unrestrained Crash Statistics

Report Generated May, 2024

	Count	Highest Time Period(s)	Highest Day(s)	Highest Month(s)
<b>Fatal Crashes</b>	<b>0</b>	-	-	-
<b>Unrestrained Fatalities</b>	<b>0</b>	-	-	-
<b>Serious Injury Crashes</b>	<b>10</b>	6:00pm - 8:59pm 9:00am - 11:59am (40%)	Friday • Sunday (60%)	January • July (40%)



### House District 52 Unrestrained-Related Crashes

- |                    |                        |
|--------------------|------------------------|
| Interstate Crashes | Non-interstate Crashes |
| ● Fatal            | ● Fatal                |
| ⊕ Serious Injury   | ● Serious Injury       |

The blue gradient represents the density of all unrestrained-related crashes.

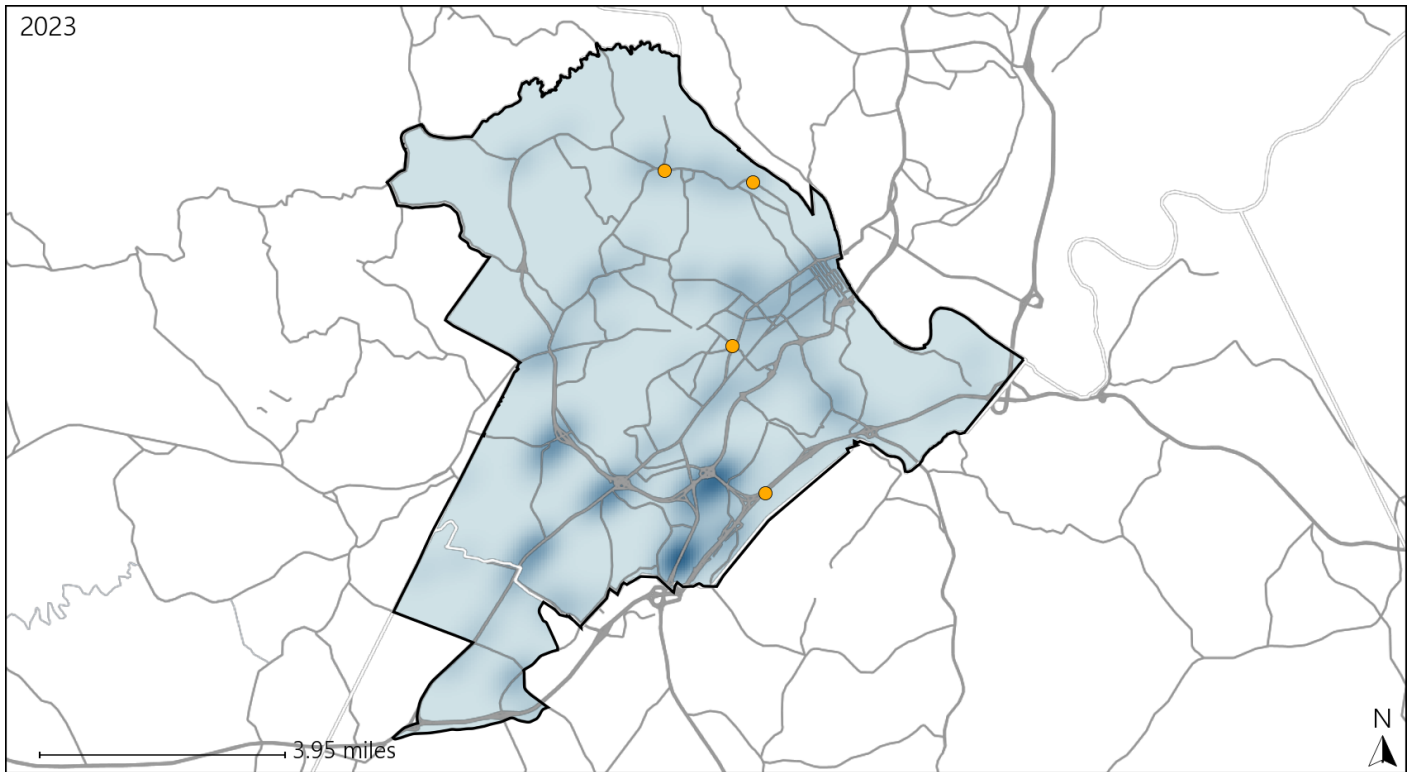


Available Crash Data - Calendar Year (CY)	CY 2020	CY 2021	CY 2022	CY 2023
Total Crashes	1207	1254	1282	1269
Fatalities	7	9	4	2
Injuries	568	632	562	607
Unrestrained Fatalities	4	3	1	0
Percent of Unrestrained Fatalities to Total Fatalities	57%	33%	25%	0%
Unrestrained Injuries	46	52	40	36
Percent of Unrestrained Injuries to Total Injuries	8%	8%	7%	6%

# Virginia House District 52 Distracted Driving Crash Statistics

Report Generated May, 2024

	Count	Highest Time Period(s)	Highest Day(s)	Highest Month(s)
<b>Fatal Crashes</b>	0	-	-	-
<b>Resulting Fatalities</b>	0	-	-	-
<b>Serious Injury Crashes</b>	4	3:00pm - 5:59pm 6:00pm - 8:59pm (50%)	Wednesday (50%)	August (50%)



## House District 52 Distracted Driving-Related Crashes

- |                    |                        |
|--------------------|------------------------|
| Interstate Crashes | Non-interstate Crashes |
| ● Fatal            | ● Fatal                |
| ⊕ Serious Injury   | ● Serious Injury       |

The blue gradient represents the density of all distracted driving-related crashes.



Available Crash Data - Calendar Year (CY)	CY 2020	CY 2021	CY 2022	CY 2023
Total Crashes	1207	1254	1282	1269
Fatal Crashes	7	9	4	2
Injury Crashes	433	447	419	435
Distracted Driving-Related Fatal Crashes	1	2	1	0
Percent of Distracted Driving-Related Fatal Crashes to Total Fatal Crashes	14%	22%	25%	0%
Distracted Driving-Related Injury Crashes	84	63	56	57
Percent of Distracted Driving-Related Injury Crashes to Total Injury Crashes	19%	14%	13%	13%