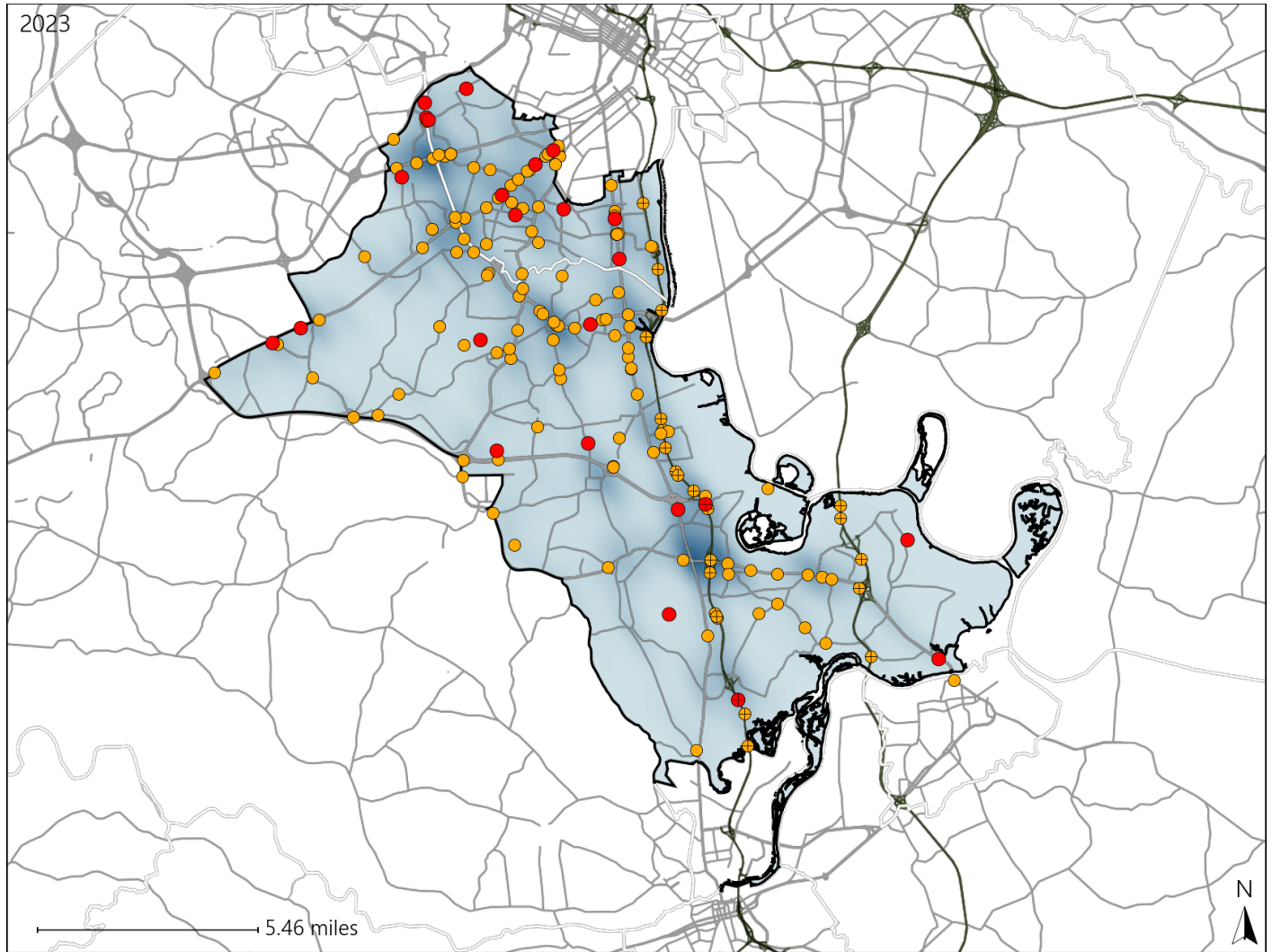


Virginia Senate District 15 Crash Statistics

Report Generated May, 2024

	Count	Highest Time Period(s)	Highest Day(s)	Highest Month(s)
Fatal Crashes	24	3:00am - 5:59am	Friday	August + May
Resulting Fatalities	24	(25%)	(29%)	(34%)
Serious Injury Crashes	142	Noon - 2:59pm	Friday	January
		(16%)	(23%)	(12%)



Senate District 15 Crashes

Interstate Crashes

- Fatal
- Serious Injury

Non-interstate Crashes

- Fatal
- Serious Injury

The blue gradient represents the density of all crashes.

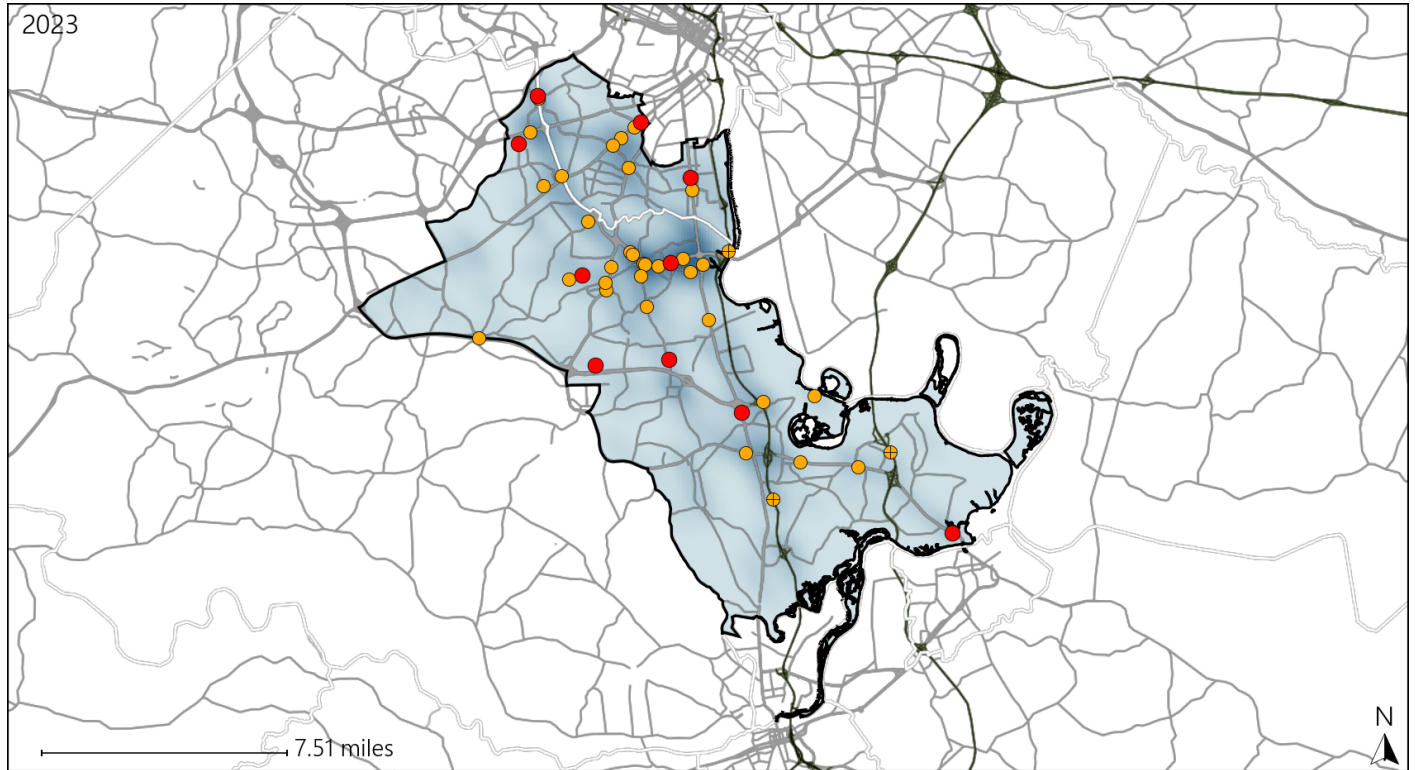


Available Crash Data - Calendar Year (CY)	CY 2020	CY 2021	CY 2022	CY 2023
Total Crashes	3403	3614	3857	4075
Fatal Crashes	27	27	27	24
Injury Crashes	975	981	1017	1101

Virginia Senate District 15 Alcohol Crash Statistics

Report Generated May, 2024

	Count	Highest Time Period(s)	Highest Day(s)	Highest Month(s)
Fatal Crashes	10	3:00am - 5:59am	Saturday • Sunday	April • August
Resulting Fatalities	10	6:00pm - 8:59pm (60%)	(40%)	(20%)
Serious Injury Crashes	34	9:00pm - 11:59pm (29%)	Friday (32%)	January • May (36%)



Senate District 15 Alcohol-Related Crashes

Interstate Crashes Non-interstate Crashes
 ● Fatal ● Fatal
 ● Serious Injury ● Serious Injury

The blue gradient represents the density of all alcohol-related crashes.

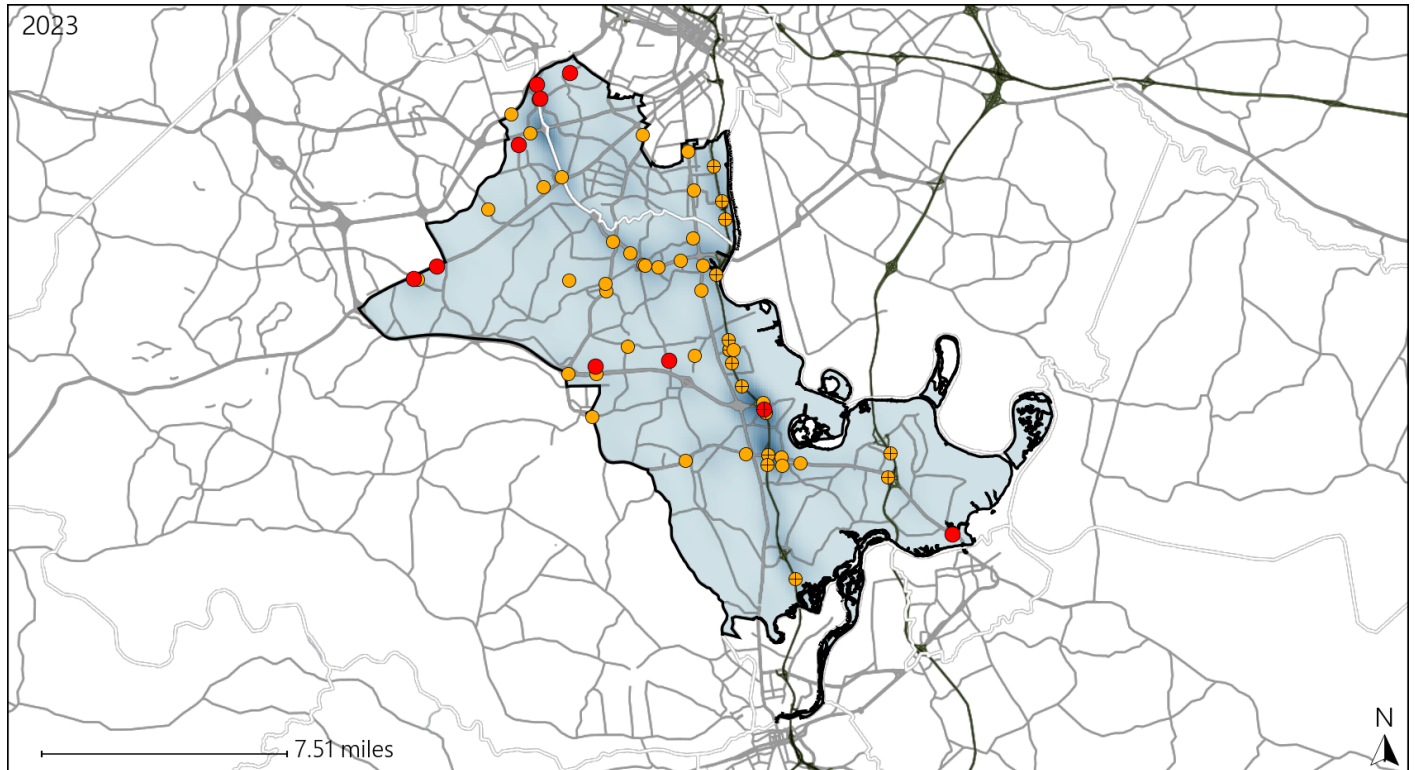


Available Crash Data - Calendar Year (CY)	CY 2020	CY 2021	CY 2022	CY 2023
Total Crashes	3403	3614	3857	4075
Fatal Crashes	27	27	27	24
Injury Crashes	975	981	1017	1101
Alcohol-Related Fatal Crashes	8	7	8	10
Percent of Alcohol-Related Fatal Crashes to Total Fatal Crashes	30%	26%	30%	42%
Alcohol-Related Injury Crashes	74	84	81	107
Percent of Alcohol-Related Injury Crashes to Total Injury Crashes	8%	9%	8%	10%

Virginia Senate District 15 Speed Crash Statistics

Report Generated May, 2024

	Count	Highest Time Period(s)	Highest Day(s)	Highest Month(s)
Fatal Crashes	10	3:00am - 5:59am	Monday	January - June
Resulting Fatalities	10	(30%)	(40%)	(40%)
Serious Injury Crashes	49	9:00pm - 11:59pm	Saturday	October
		(18%)	(24%)	(14%)



Senate District 15 Speed-Related Crashes

Interstate Crashes Non-interstate Crashes
 ● Fatal ● Fatal
 ● Serious Injury ● Serious Injury

The blue gradient represents the density of all speed-related crashes.

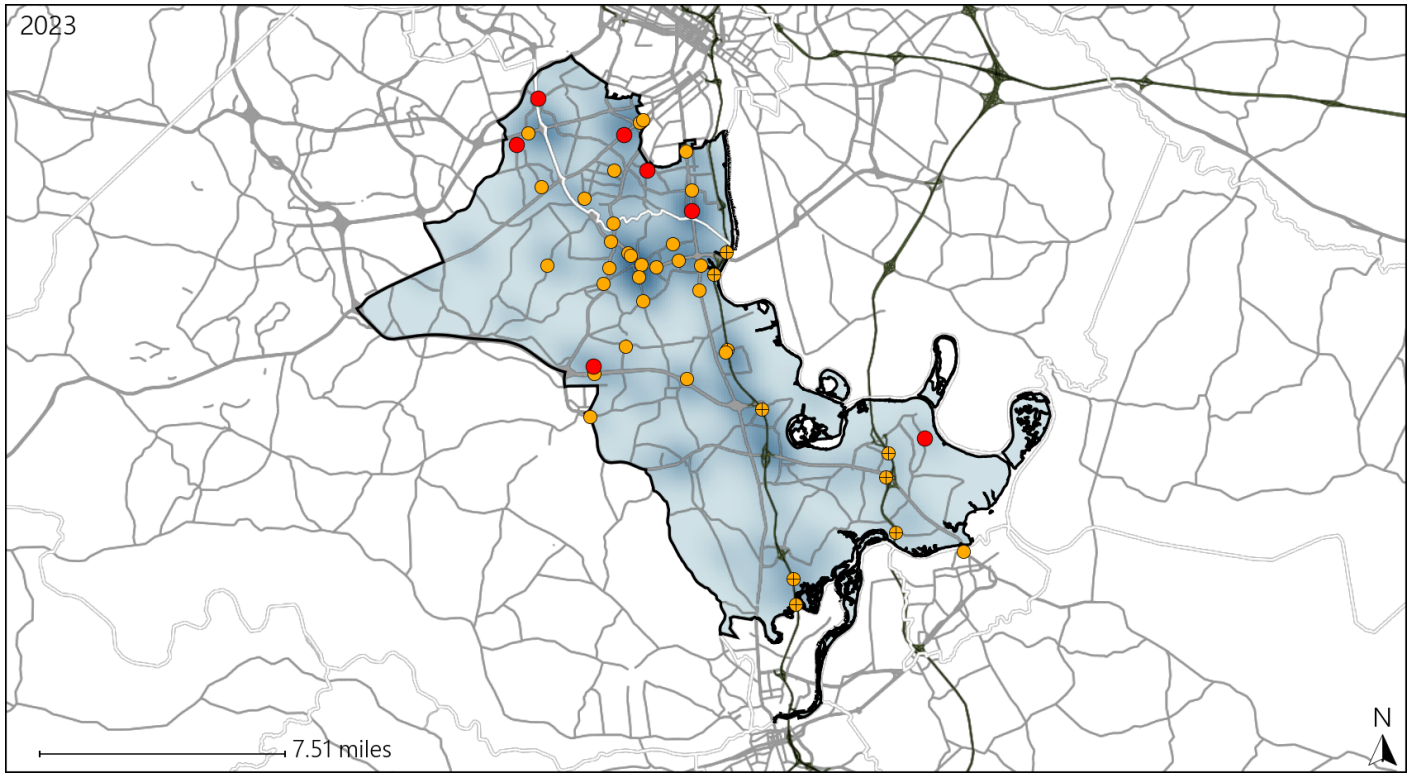


Available Crash Data - Calendar Year (CY)	CY 2020	CY 2021	CY 2022	CY 2023
Total Crashes	3403	3614	3857	4075
Fatal Crashes	27	27	27	24
Injury Crashes	975	981	1017	1101
Speed-Related Fatal Crashes	13	9	13	10
Percent of Speed-Related Fatal Crashes to Total Fatal Crashes	48%	33%	48%	42%
Speed-Related Injury Crashes	222	265	242	255
Percent of Speed-Related Injury Crashes to Total Injury Crashes	23%	27%	24%	23%

Virginia Senate District 15 Unrestrained Crash Statistics

Report Generated May, 2024

	Count	Highest Time Period(s)	Highest Day(s)	Highest Month(s)
Fatal Crashes	7	3:00pm - 5:59pm	Friday • Monday	January
Unrestrained Fatalities	7	Noon - 2:59pm (58%)	(58%)	(43%)
Serious Injury Crashes	38	3:00am - 5:59am Midnight - 2:59am (36%)	Thursday (24%)	May (13%)



Senate District 15 Unrestrained-Related Crashes

- | | |
|--------------------|------------------------|
| Interstate Crashes | Non-interstate Crashes |
| ● Fatal | ● Fatal |
| ⊕ Serious Injury | ⊕ Serious Injury |

The blue gradient represents the density of all unrestrained-related crashes.

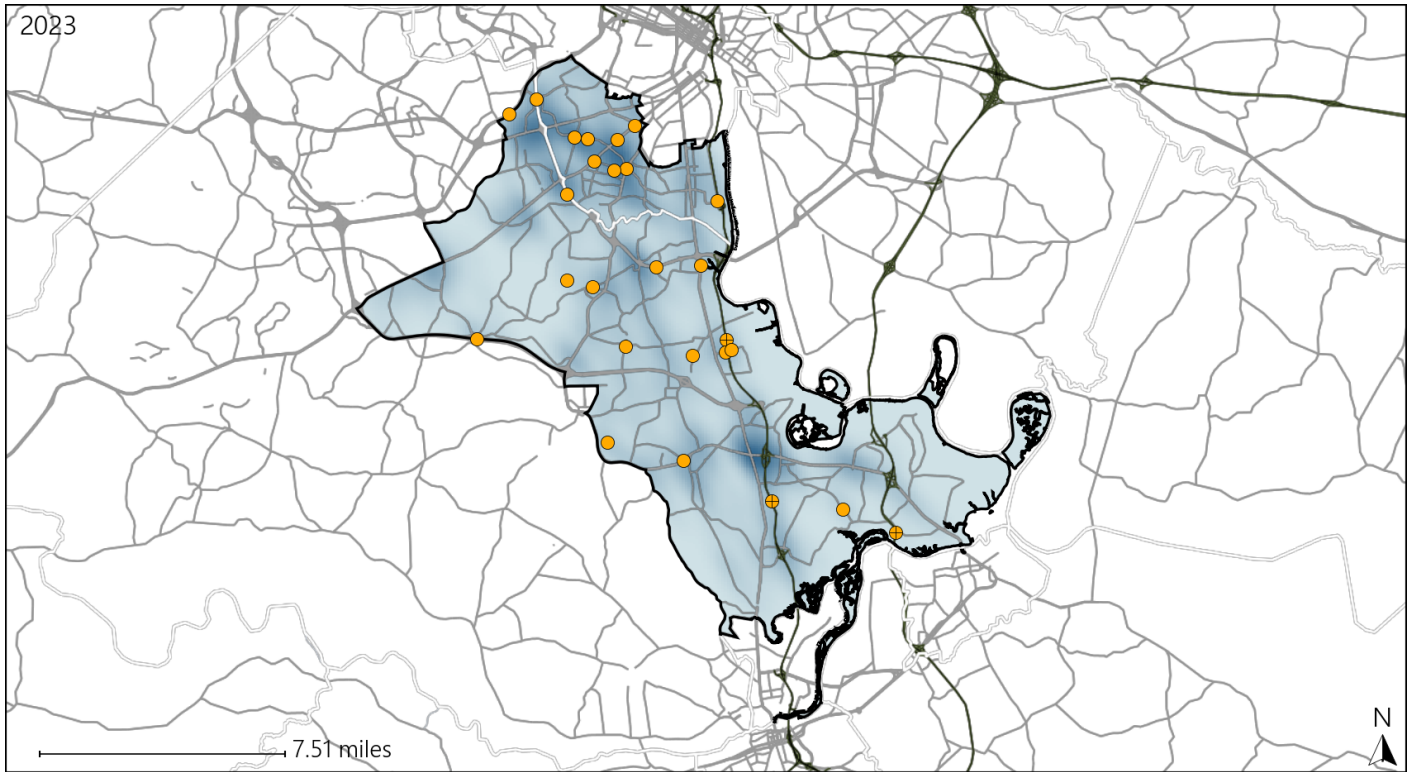


Available Crash Data - Calendar Year (CY)	CY 2020	CY 2021	CY 2022	CY 2023
Total Crashes	3403	3614	3857	4075
Fatalities	28	27	28	24
Injuries	1637	1670	1716	1902
Unrestrained Fatalities	10	8	11	7
Percent of Unrestrained Fatalities to Total Fatalities	36%	30%	39%	29%
Unrestrained Injuries	122	134	122	125
Percent of Unrestrained Injuries to Total Injuries	7%	8%	7%	7%

Virginia Senate District 15 Distracted Driving Crash Statistics

Report Generated May, 2024

	Count	Highest Time Period(s)	Highest Day(s)	Highest Month(s)
Fatal Crashes	0	-	-	-
Resulting Fatalities	0	-	-	-
Serious Injury Crashes	26	9:00pm - 11:59pm (27%)	Saturday (27%)	January (23%)



Senate District 15 Distracted Driving-Related Crashes

- | | |
|--------------------|------------------------|
| Interstate Crashes | Non-interstate Crashes |
| ● Fatal | ● Fatal |
| ● Serious Injury | ● Serious Injury |

The blue gradient represents the density of all distracted driving-related crashes.



Available Crash Data - Calendar Year (CY)	CY 2020	CY 2021	CY 2022	CY 2023
Total Crashes	3403	3614	3857	4075
Fatal Crashes	27	27	27	24
Injury Crashes	975	981	1017	1101
Distracted Driving-Related Fatal Crashes	5	3	3	0
Percent of Distracted Driving-Related Fatal Crashes to Total Fatal Crashes	19%	11%	11%	0%
Distracted Driving-Related Injury Crashes	155	144	144	163
Percent of Distracted Driving-Related Injury Crashes to Total Injury Crashes	16%	15%	14%	15%