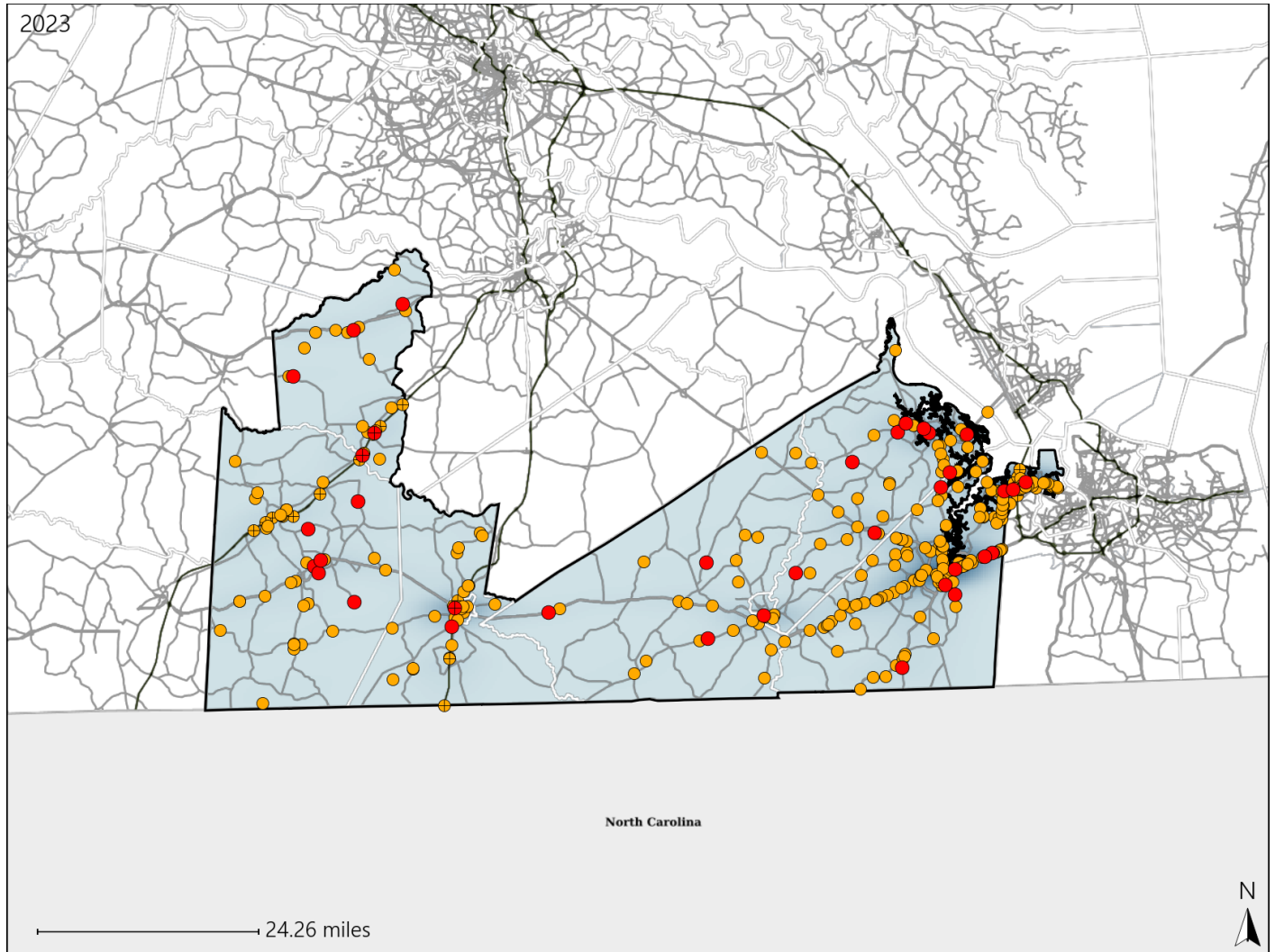


Virginia Senate District 17 Crash Statistics

Report Generated May, 2024

	Count	Highest Time Period(s)	Highest Day(s)	Highest Month(s)
Fatal Crashes	36	6:00pm - 8:59pm	Saturday	June
Resulting Fatalities	38	(28%)	(25%)	(17%)
Serious Injury Crashes	302	3:00pm - 5:59pm	Friday • Thursday	May
		(24%)	(32%)	(10%)



Senate District 17 Crashes

Interstate Crashes

- Fatal
- Serious Injury

Non-interstate Crashes

- Fatal
- Serious Injury

The blue gradient represents the density of all crashes.

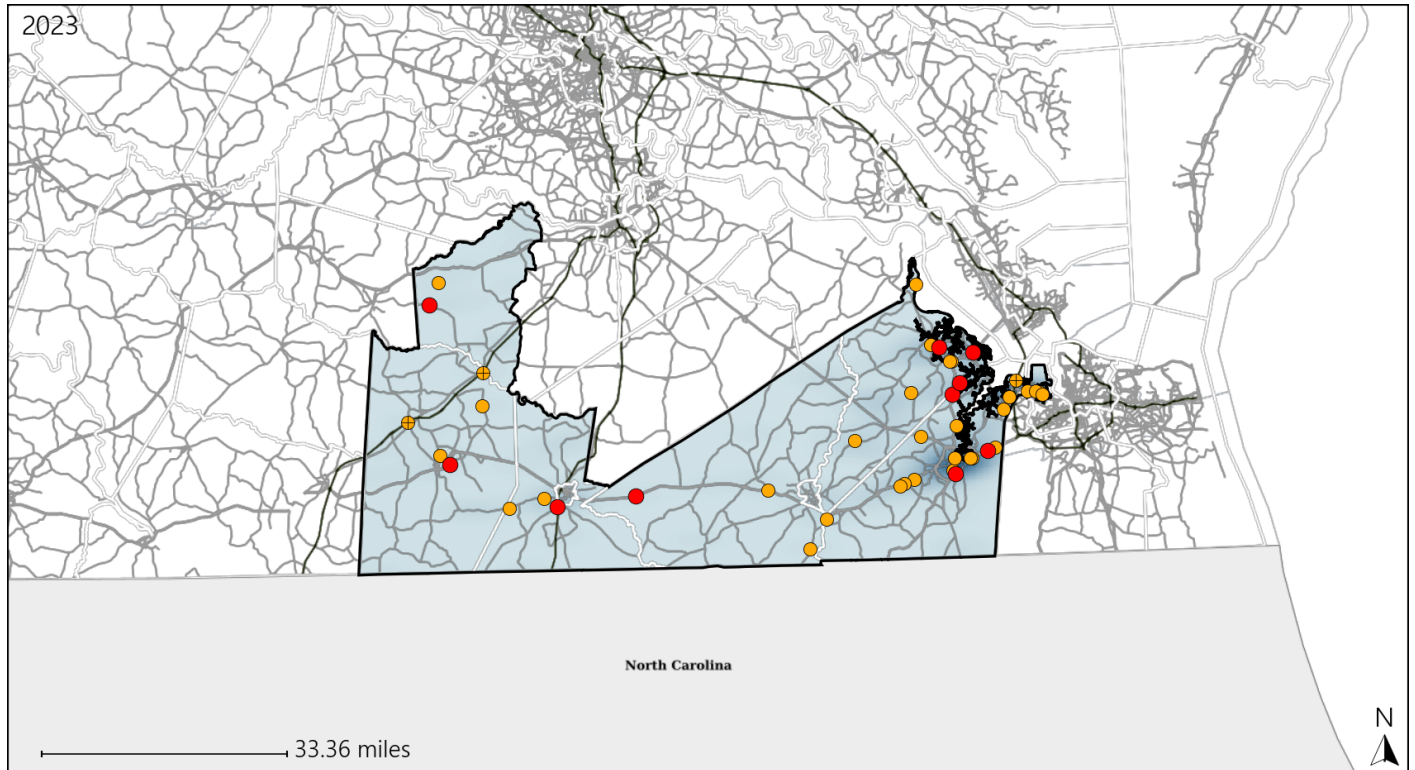


Available Crash Data - Calendar Year (CY)	CY 2020	CY 2021	CY 2022	CY 2023
Total Crashes	3481	3778	3594	3753
Fatal Crashes	24	53	36	36
Injury Crashes	1390	1493	1459	1584

Virginia Senate District 17 Alcohol Crash Statistics

Report Generated May, 2024

	Count	Highest Time Period(s)	Highest Day(s)	Highest Month(s)
Fatal Crashes	10	9:00pm - 11:59pm	Saturday	June
Resulting Fatalities	11	(40%)	(40%)	(30%)
Serious Injury Crashes	34	6:00pm - 8:59pm	Sunday	October
		(29%)	(26%)	(21%)



Senate District 17 Alcohol-Related Crashes

Interstate Crashes Non-interstate Crashes
 ● Fatal ● Fatal
 ⊕ Serious Injury ⊕ Serious Injury

The blue gradient represents the density of all alcohol-related crashes.

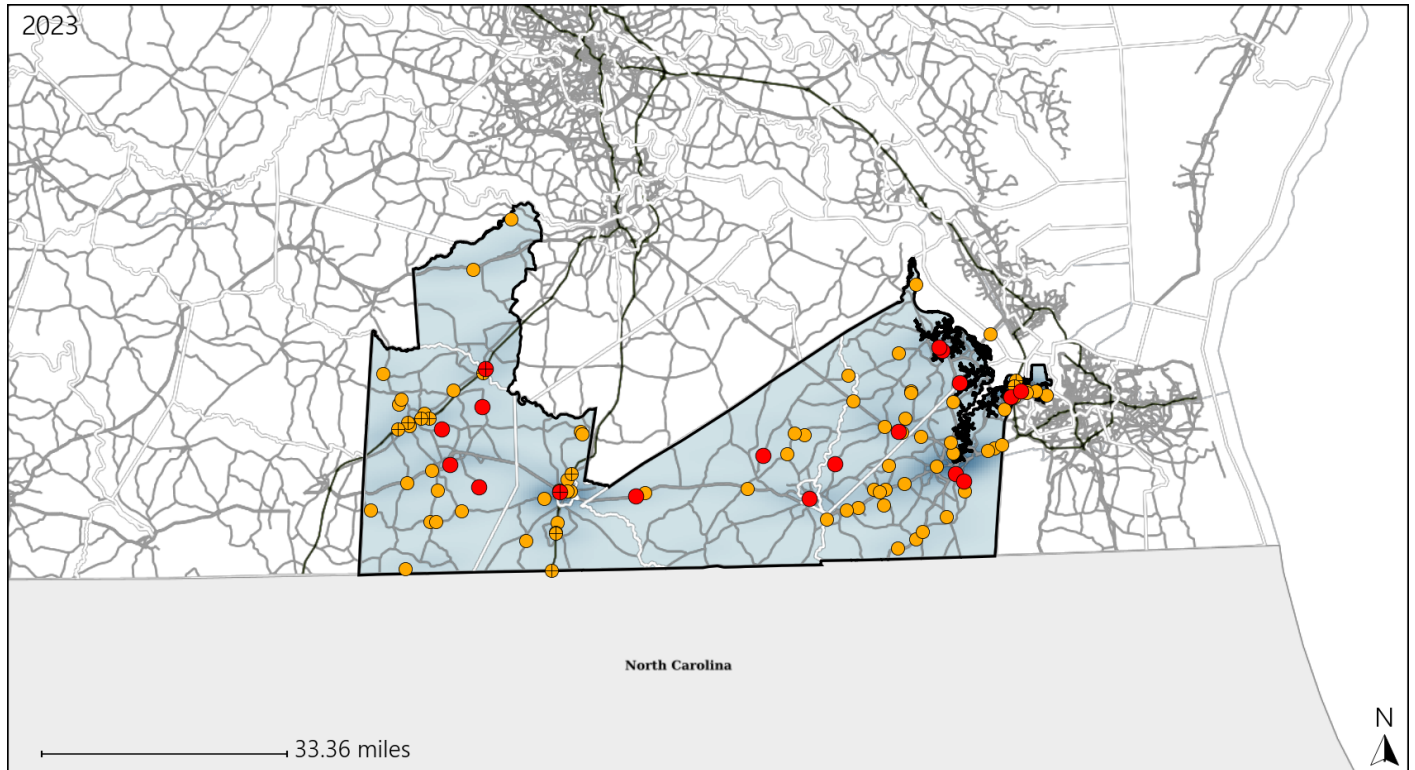


Available Crash Data - Calendar Year (CY)	CY 2020	CY 2021	CY 2022	CY 2023
Total Crashes	3481	3778	3594	3753
Fatal Crashes	24	53	36	36
Injury Crashes	1390	1493	1459	1584
Alcohol-Related Fatal Crashes	6	10	9	10
Percent of Alcohol-Related Fatal Crashes to Total Fatal Crashes	25%	19%	25%	28%
Alcohol-Related Injury Crashes	114	91	95	102
Percent of Alcohol-Related Injury Crashes to Total Injury Crashes	8%	6%	7%	6%

Virginia Senate District 17 Speed Crash Statistics

Report Generated May, 2024

	Count	Highest Time Period(s)	Highest Day(s)	Highest Month(s)
Fatal Crashes	18	6:00pm - 8:59pm	Saturday	April • August
Resulting Fatalities	18	(33%)	(33%)	(22%)
Serious Injury Crashes	81	6:00pm - 8:59pm	Friday • Thursday	July
		(19%)	(34%)	(12%)



Senate District 17 Speed-Related Crashes

Interstate Crashes Non-interstate Crashes
 ● Fatal ● Fatal
 ⊕ Serious Injury ⊕ Serious Injury

The blue gradient represents the density of all speed-related crashes.

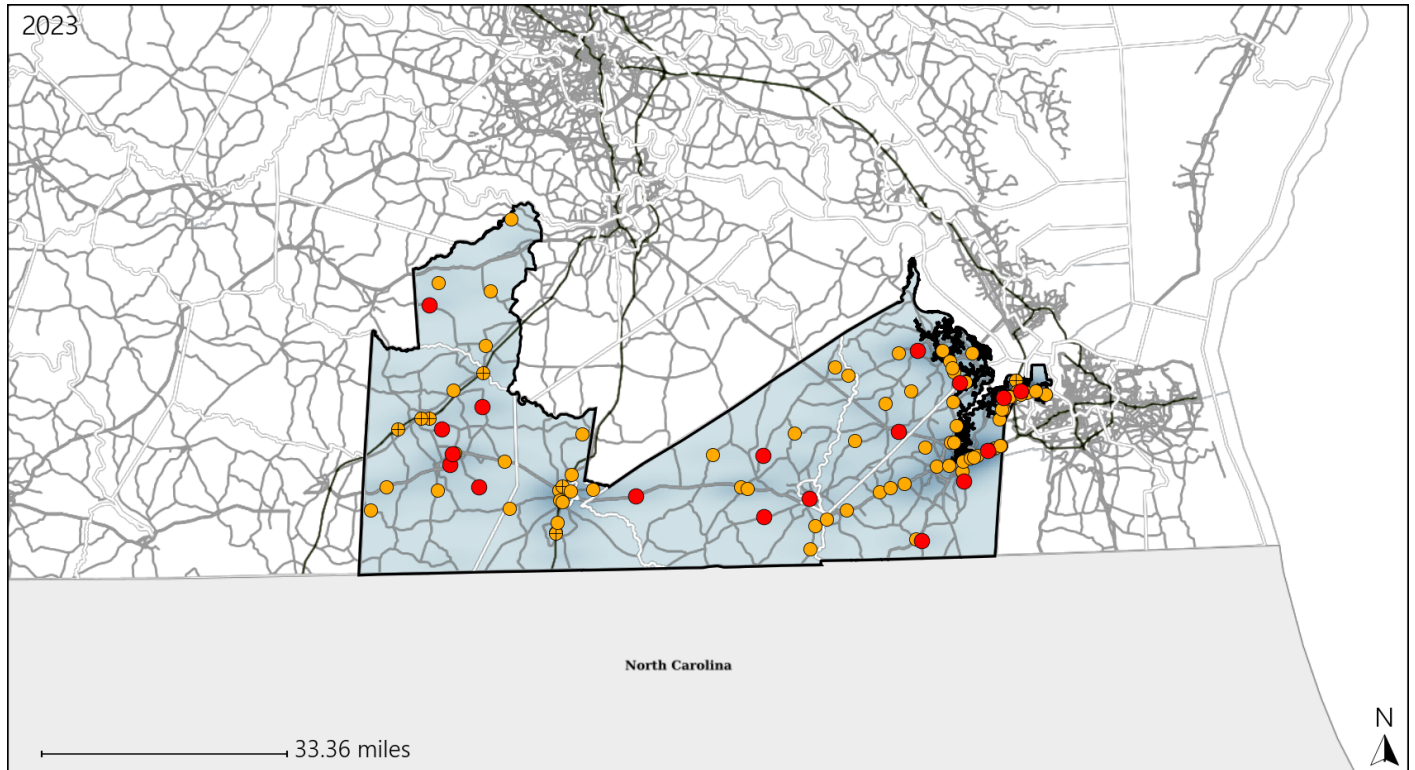


Available Crash Data - Calendar Year (CY)	CY 2020	CY 2021	CY 2022	CY 2023
Total Crashes	3481	3778	3594	3753
Fatal Crashes	24	53	36	36
Injury Crashes	1390	1493	1459	1584
Speed-Related Fatal Crashes	12	22	12	18
Percent of Speed-Related Fatal Crashes to Total Fatal Crashes	50%	42%	33%	50%
Speed-Related Injury Crashes	278	291	271	301
Percent of Speed-Related Injury Crashes to Total Injury Crashes	20%	19%	19%	19%

Virginia Senate District 17 Unrestrained Crash Statistics

Report Generated May, 2024

	Count	Highest Time Period(s)	Highest Day(s)	Highest Month(s)
Fatal Crashes	18	6:00pm - 8:59pm	Saturday • Sunday	December • June
Unrestrained Fatalities	18	(33%)	(44%)	(34%)
Serious Injury Crashes	82	3:00pm - 5:59pm	Tuesday	January • March
		(18%)	(18%)	(22%)



Senate District 17 Unrestrained-Related Crashes

Interstate Crashes

- Fatal
- Serious Injury

Non-interstate Crashes

- Fatal
- Serious Injury

The blue gradient represents the density of all unrestrained-related crashes.

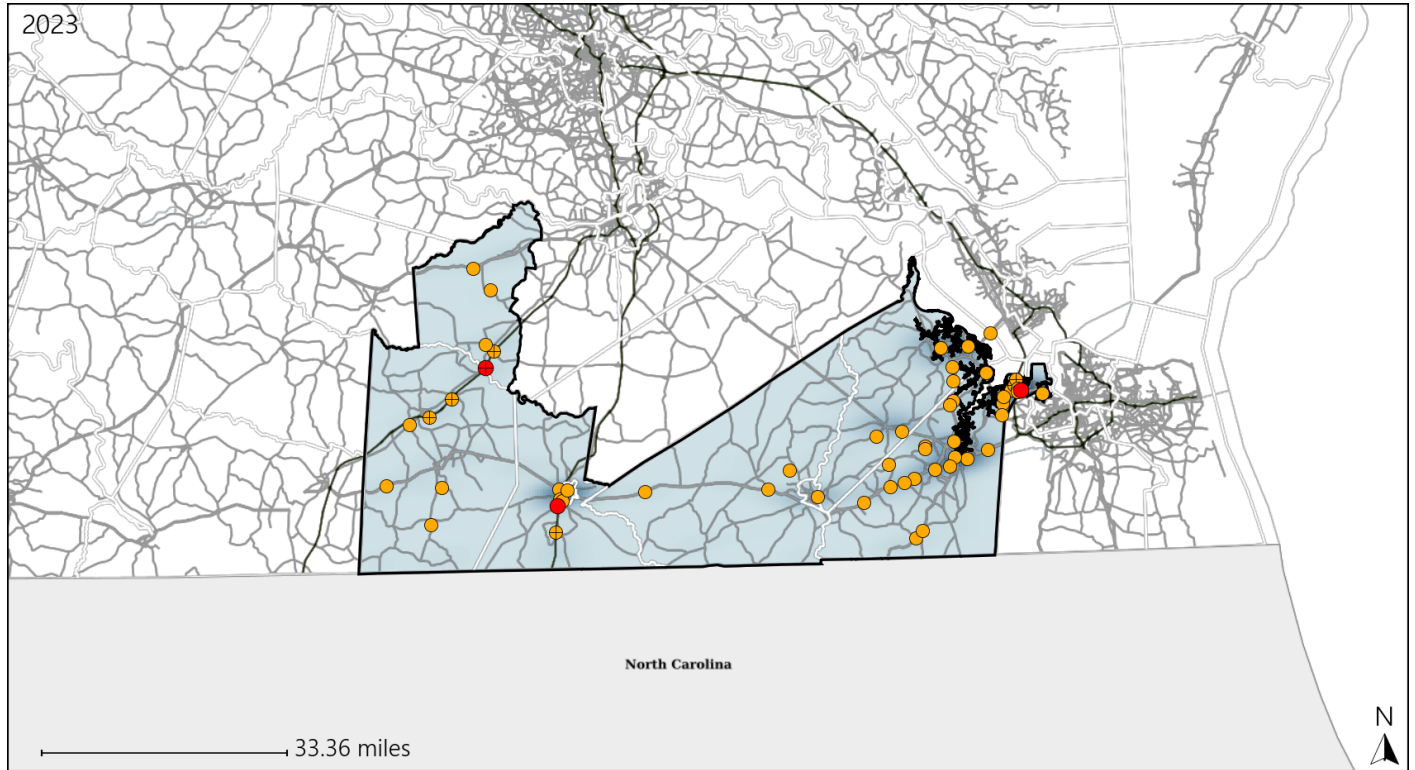


Available Crash Data - Calendar Year (CY)	CY 2020	CY 2021	CY 2022	CY 2023
Total Crashes	3481	3778	3594	3753
Fatalities	26	61	37	38
Injuries	2012	2220	2169	2372
Unrestrained Fatalities	14	20	16	18
Percent of Unrestrained Fatalities to Total Fatalities	54%	33%	43%	47%
Unrestrained Injuries	144	180	162	222
Percent of Unrestrained Injuries to Total Injuries	7%	8%	7%	9%

Virginia Senate District 17 Distracted Driving Crash Statistics

Report Generated May, 2024

	Count	Highest Time Period(s)	Highest Day(s)	Highest Month(s)
Fatal Crashes	3	6:00am - 8:59am	Friday • Monday	April • August
Resulting Fatalities	3	9:00am - 11:59am (66%)	(66%)	(66%)
Serious Injury Crashes	55	3:00pm - 5:59pm (24%)	Saturday (18%)	July (15%)



Senate District 17 Distracted Driving-Related Crashes

Interstate Crashes

- Fatal
- Serious Injury

Non-interstate Crashes

- Fatal
- Serious Injury

The blue gradient represents the density of all distracted driving-related crashes.



Available Crash Data - Calendar Year (CY)	CY 2020	CY 2021	CY 2022	CY 2023
Total Crashes	3481	3778	3594	3753
Fatal Crashes	24	53	36	36
Injury Crashes	1390	1493	1459	1584
Distracted Driving-Related Fatal Crashes	1	9	6	3
Percent of Distracted Driving-Related Fatal Crashes to Total Fatal Crashes	4%	17%	17%	8%
Distracted Driving-Related Injury Crashes	267	254	239	269
Percent of Distracted Driving-Related Injury Crashes to Total Injury Crashes	19%	17%	16%	17%