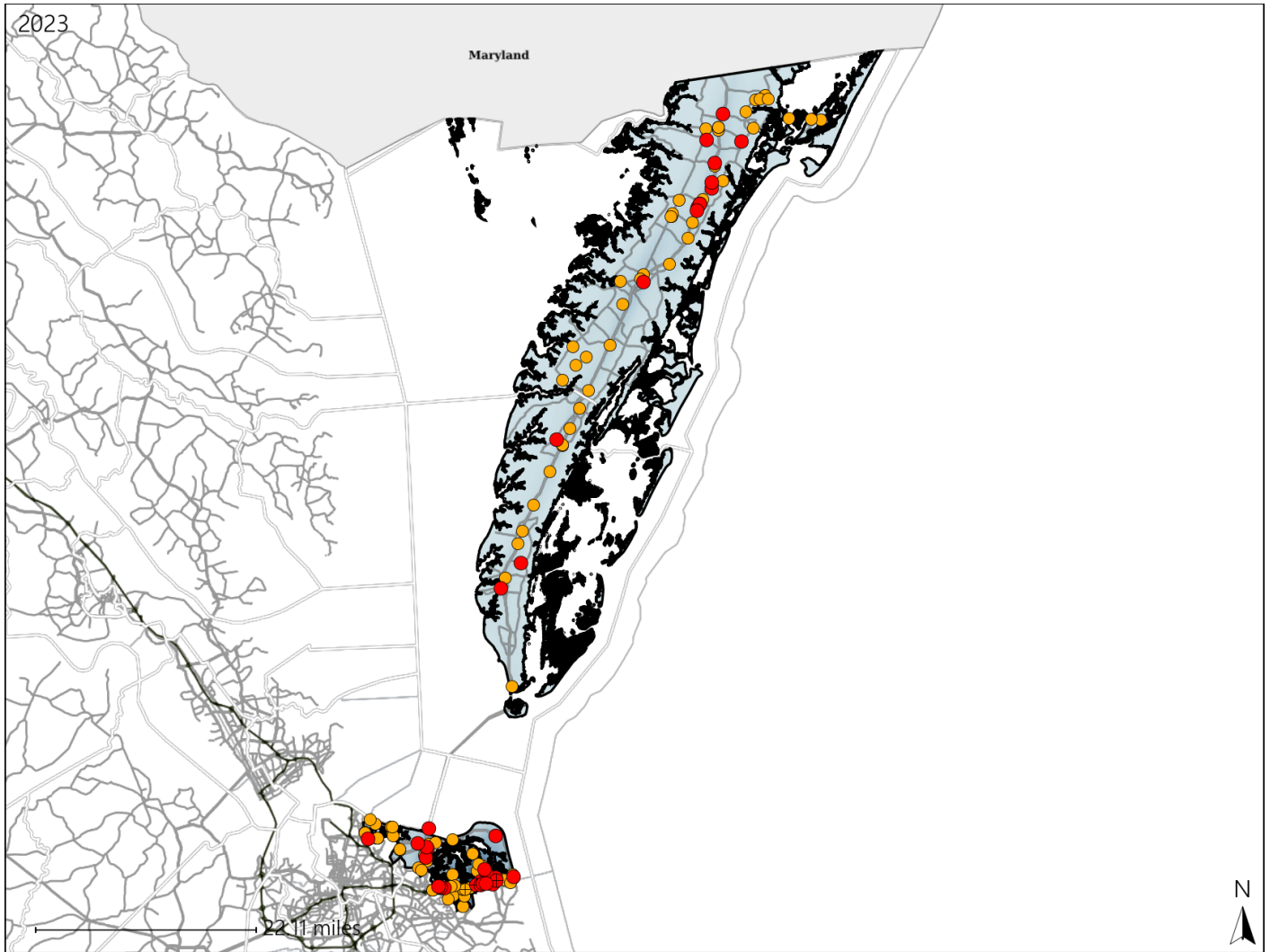


Virginia Senate District 20 Crash Statistics

Report Generated May, 2024

| | Count | Highest Time Period(s) | Highest Day(s) | Highest Month(s) |
|-------------------------------|------------|--------------------------|-------------------|------------------|
| Fatal Crashes | 35 | 6:00pm - 8:59pm (29%) | Tuesday (23%) | June (20%) |
| Resulting Fatalities | 36 | | | |
| Serious Injury Crashes | 105 | 3:00pm - 5:59pm (25%) | Saturday (17%) | January (13%) |



Senate District 20 Crashes

Interstate Crashes

- Fatal
- Serious Injury

Non-interstate Crashes

- Fatal
- Serious Injury

The blue gradient represents the density of all crashes.

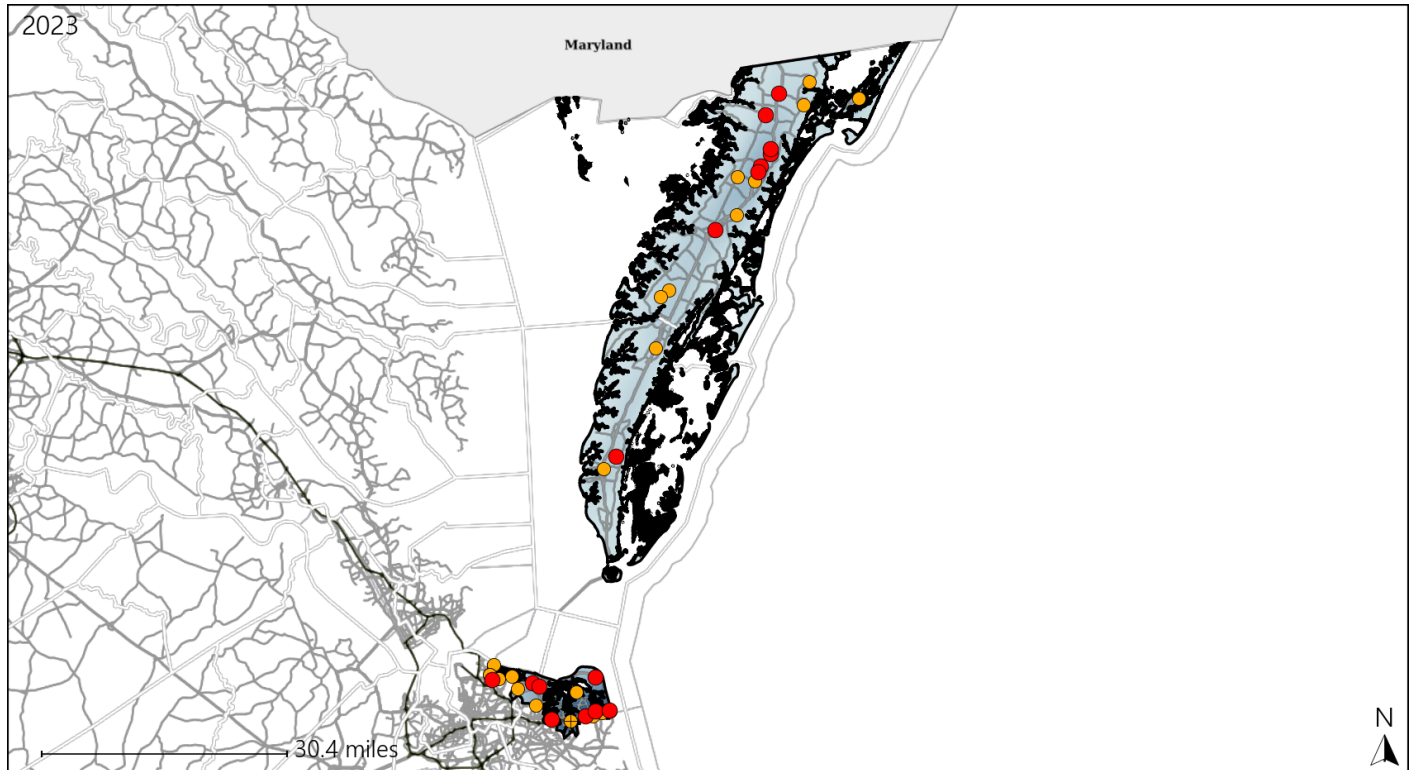


| Available Crash Data - Calendar Year (CY) | CY 2020 | CY 2021 | CY 2022 | CY 2023 |
|---|---------|---------|---------|---------|
| Total Crashes | 2660 | 2884 | 2508 | 2669 |
| Fatal Crashes | 20 | 21 | 21 | 35 |
| Injury Crashes | 775 | 837 | 713 | 734 |

Virginia Senate District 20 Alcohol Crash Statistics

Report Generated May, 2024

| | Count | Highest Time Period(s) | Highest Day(s) | Highest Month(s) |
|-------------------------------|-----------|-------------------------|-----------------|-------------------------|
| Fatal Crashes | 16 | 6:00pm - 8:59pm | Saturday | August + January |
| Resulting Fatalities | 16 | (44%) | (31%) | (24%) |
| Serious Injury Crashes | 22 | 9:00pm - 11:59pm | Saturday | May |
| | | (32%) | (23%) | (23%) |



Senate District 20 Alcohol-Related Crashes

Interstate Crashes

Non-interstate Crashes

- Fatal
- Serious Injury

- Fatal
- Serious Injury

The blue gradient represents the density of all alcohol-related crashes.

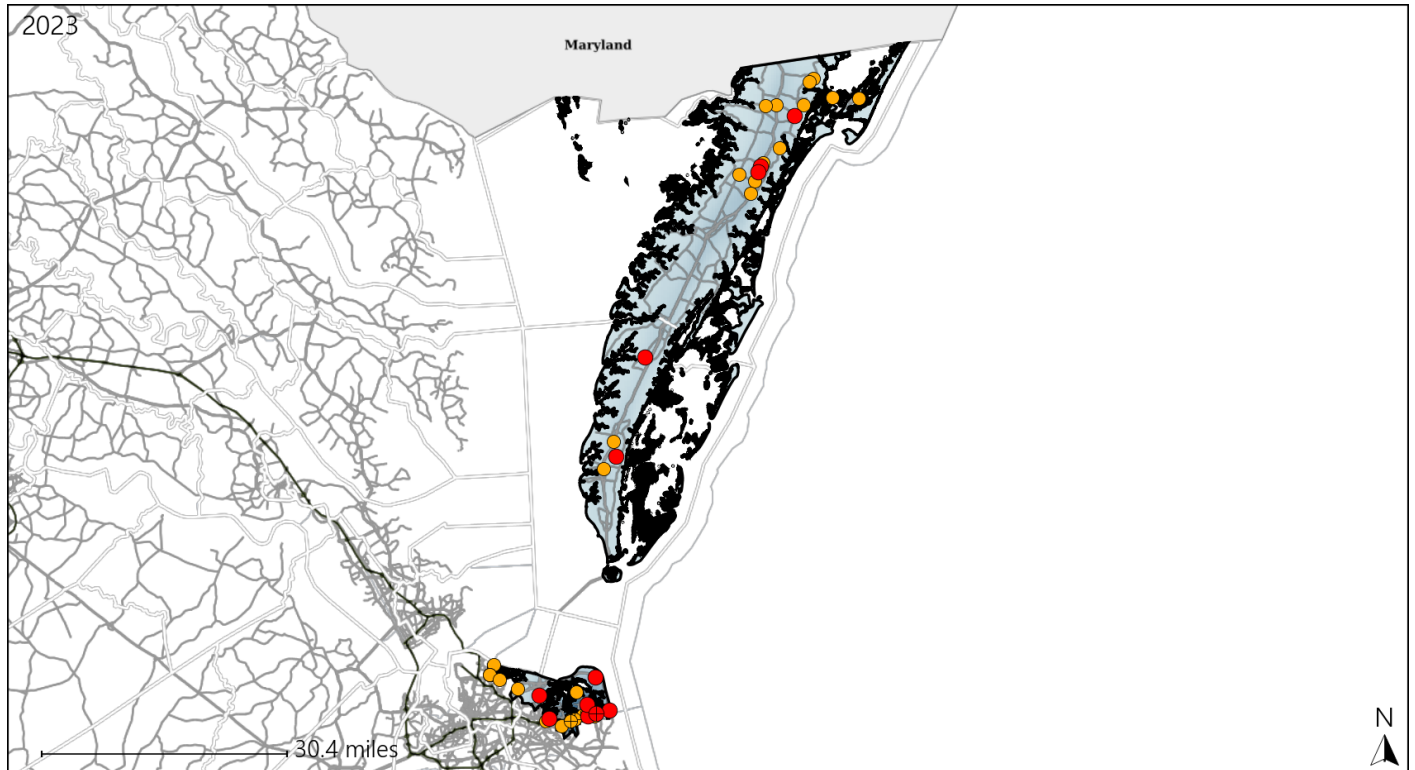


| Available Crash Data - Calendar Year (CY) | CY 2020 | CY 2021 | CY 2022 | CY 2023 |
|--|---------|---------|---------|---------|
| Total Crashes | 2660 | 2884 | 2508 | 2669 |
| Fatal Crashes | 20 | 21 | 21 | 35 |
| Injury Crashes | 775 | 837 | 713 | 734 |
| Alcohol-Related Fatal Crashes | 7 | 5 | 6 | 16 |
| Percent of Alcohol-Related Fatal Crashes to Total Fatal Crashes | 35% | 24% | 29% | 46% |
| Alcohol-Related Injury Crashes | 95 | 78 | 74 | 75 |
| Percent of Alcohol-Related Injury Crashes to Total Injury Crashes | 12% | 9% | 10% | 10% |

Virginia Senate District 20 Speed Crash Statistics

Report Generated May, 2024

| | Count | Highest Time Period(s) | Highest Day(s) | Highest Month(s) |
|-------------------------------|-----------|------------------------|--------------------------|-------------------|
| Fatal Crashes | 12 | 6:00pm - 8:59pm | Sunday | June • May |
| Resulting Fatalities | 12 | (33%) | (25%) | (34%) |
| Serious Injury Crashes | 28 | 3:00pm - 5:59pm | Saturday • Sunday | May |
| | | (32%) | (50%) | (18%) |



Senate District 20 Speed-Related Crashes

Interstate Crashes Non-interstate Crashes
 ● Fatal ● Fatal
 ● Serious Injury ● Serious Injury

The blue gradient represents the density of all speed-related crashes.

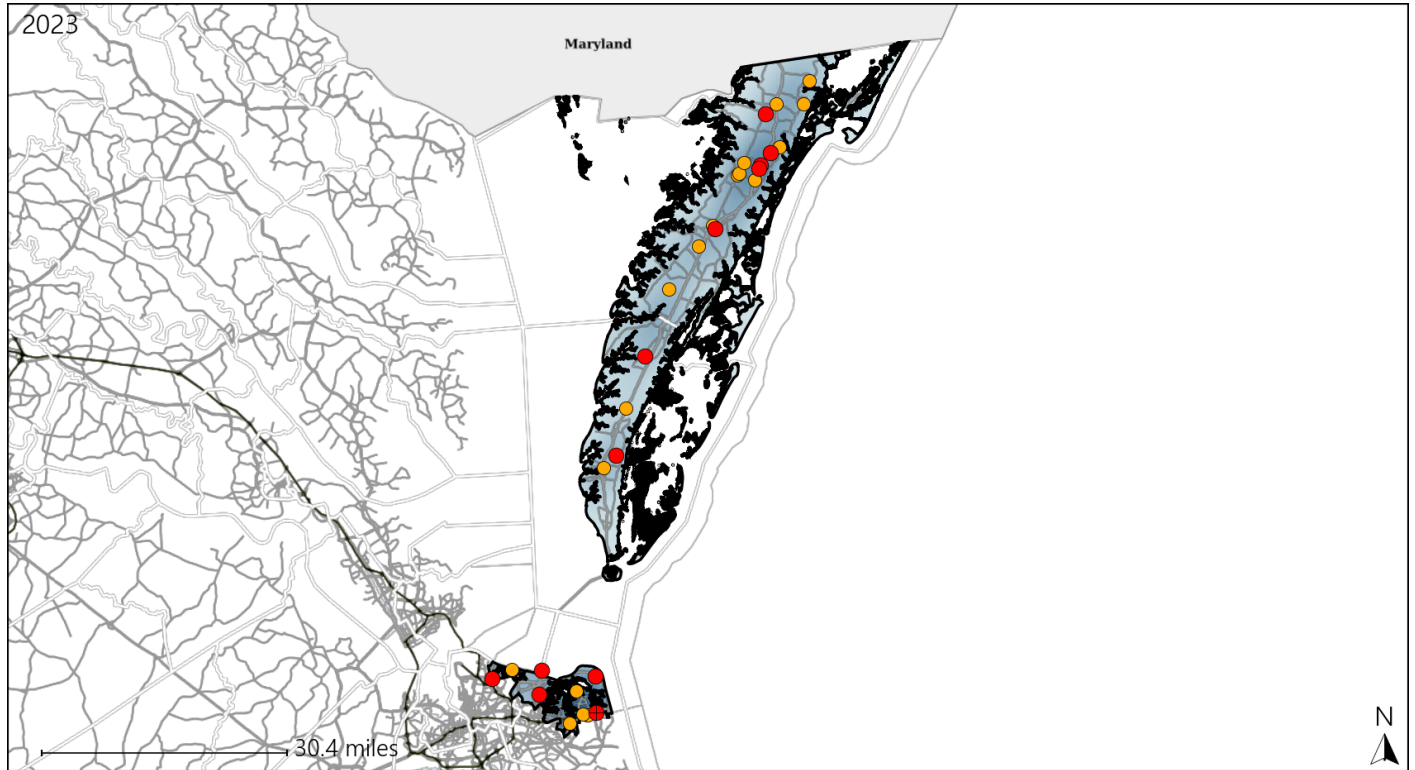


| Available Crash Data - Calendar Year (CY) | CY 2020 | CY 2021 | CY 2022 | CY 2023 |
|--|-------------|-------------|-------------|-------------|
| Total Crashes | 2660 | 2884 | 2508 | 2669 |
| Fatal Crashes | 20 | 21 | 21 | 35 |
| Injury Crashes | 775 | 837 | 713 | 734 |
| Speed-Related Fatal Crashes | 11 | 12 | 10 | 12 |
| Percent of Speed-Related Fatal Crashes to Total Fatal Crashes | 55% | 57% | 48% | 34% |
| Speed-Related Injury Crashes | 179 | 179 | 123 | 134 |
| Percent of Speed-Related Injury Crashes to Total Injury Crashes | 23% | 21% | 17% | 18% |

Virginia Senate District 20 Unrestrained Crash Statistics

Report Generated May, 2024

| | Count | Highest Time Period(s) | Highest Day(s) | Highest Month(s) |
|--------------------------------|-----------|--------------------------|---------------------------|-----------------------------|
| Fatal Crashes | 12 | 6:00am - 8:59am | Thursday | June |
| Unrestrained Fatalities | 12 | 6:00pm - 8:59pm (34%) | (33%) | (33%) |
| Serious Injury Crashes | 19 | 3:00pm - 5:59pm (26%) | Friday • Tuesday (42%) | November • October (42%) |



Senate District 20 Unrestrained-Related Crashes

Interstate Crashes

Non-interstate Crashes

- Fatal
- Serious Injury

- Fatal
- Serious Injury

The blue gradient represents the density of all unrestrained-related crashes.

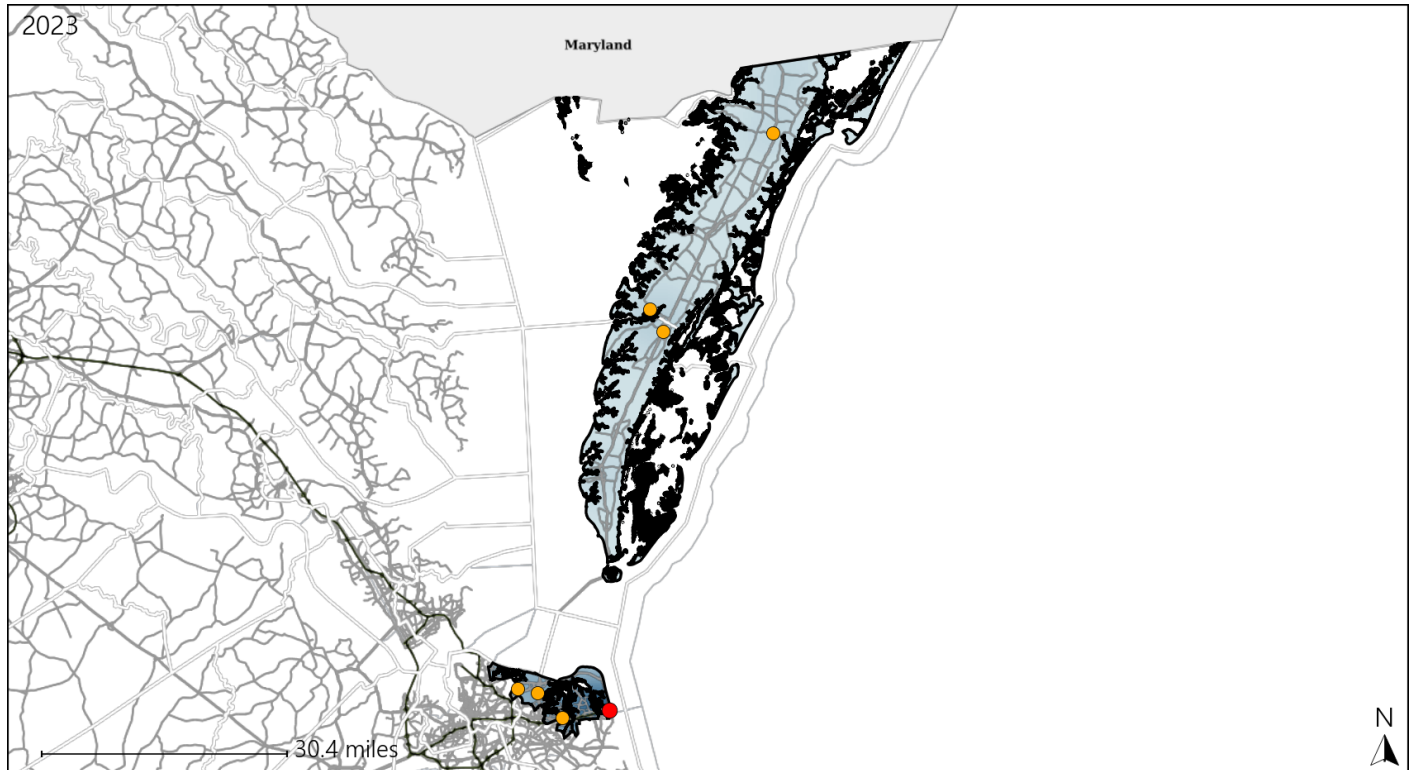


| Available Crash Data - Calendar Year (CY) | CY 2020 | CY 2021 | CY 2022 | CY 2023 |
|--|---------|---------|---------|---------|
| Total Crashes | 2660 | 2884 | 2508 | 2669 |
| Fatalities | 20 | 22 | 23 | 36 |
| Injuries | 1272 | 1335 | 1173 | 1157 |
| Unrestrained Fatalities | 8 | 8 | 5 | 12 |
| Percent of Unrestrained Fatalities to Total Fatalities | 40% | 36% | 22% | 33% |
| Unrestrained Injuries | 96 | 92 | 83 | 73 |
| Percent of Unrestrained Injuries to Total Injuries | 8% | 7% | 7% | 6% |

Virginia Senate District 20 Bicycle Crash Statistics

Report Generated May, 2024

| | Count | Highest Time Period(s) | Highest Day(s) | Highest Month(s) |
|-------------------------------|----------|-------------------------|---------------------------|------------------|
| Fatal Crashes | 1 | 9:00pm - 11:59pm | Saturday | August |
| Bicycle Fatalities | 1 | (100%) | (100%) | (100%) |
| Serious Injury Crashes | 6 | 3:00pm - 5:59pm | Monday • Wednesday | December |
| | | (33%) | (66%) | (33%) |



Senate District 20 Bicycle-Related Crashes

Interstate Crashes

Non-interstate Crashes

- Fatal
- Serious Injury

- Fatal
- Serious Injury

The blue gradient represents the density of all bicycle-related crashes.

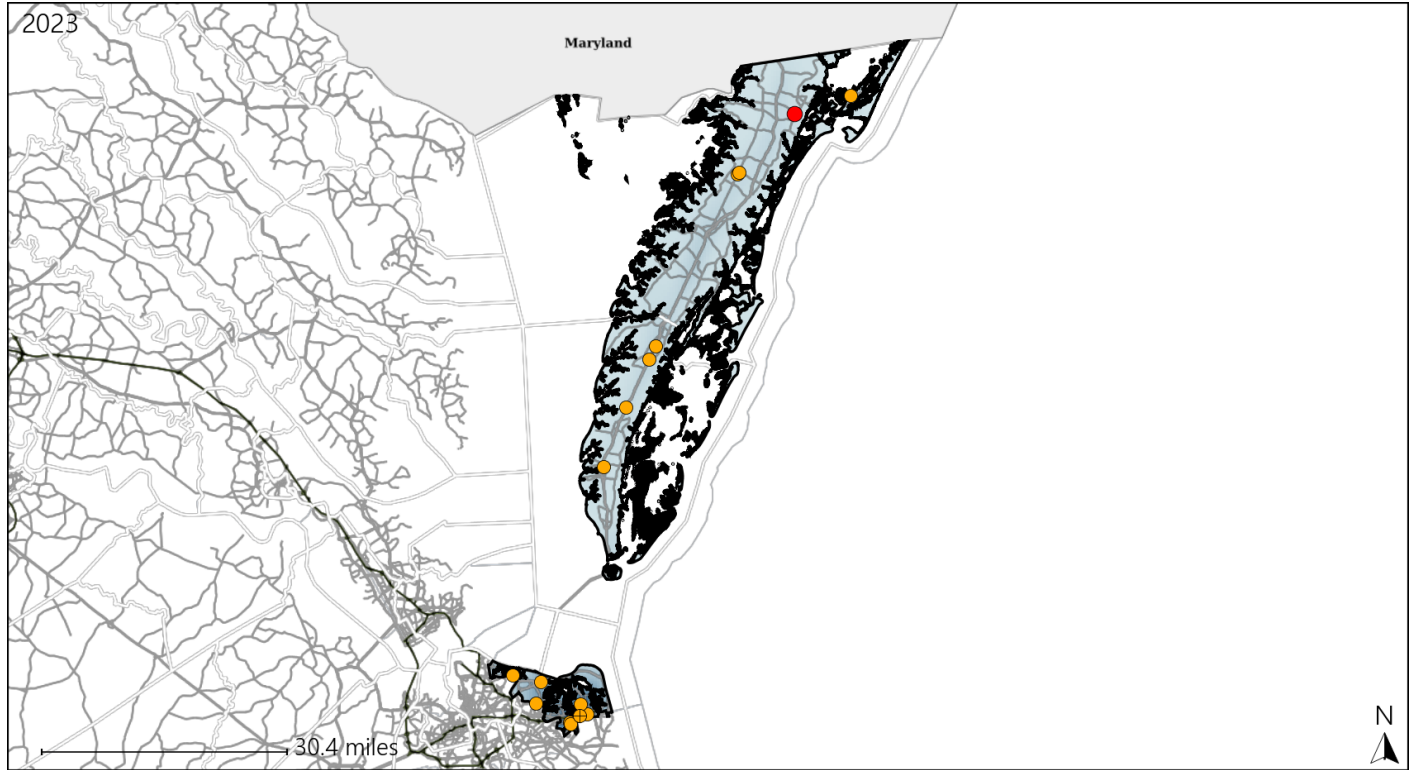


| Available Crash Data - Calendar Year (CY) | CY 2020 | CY 2021 | CY 2022 | CY 2023 |
|---|---------|---------|---------|---------|
| Total Crashes | 2660 | 2884 | 2508 | 2669 |
| Fatal Crashes | 20 | 21 | 21 | 35 |
| Injury Crashes | 775 | 837 | 713 | 734 |
| Bicycle-Related Fatal Crashes | 0 | 1 | 0 | 1 |
| Percent of Bicycle-Related Fatal Crashes to Total Fatal Crashes | 0% | 5% | 0% | 3% |
| Bicycle-Related Injury Crashes | 29 | 21 | 18 | 24 |
| Percent of Bicycle-Related Injury Crashes to Total Injury Crashes | 4% | 3% | 3% | 3% |

Virginia Senate District 20 Distracted Driving Crash Statistics

Report Generated May, 2024

| | Count | Highest Time Period(s) | Highest Day(s) | Highest Month(s) |
|-------------------------------|-----------|------------------------|------------------|------------------|
| Fatal Crashes | 1 | 6:00pm - 8:59pm | Wednesday | April |
| Resulting Fatalities | 1 | (100%) | (100%) | (100%) |
| Serious Injury Crashes | 15 | Noon - 2:59pm | Thursday | March |
| | | (27%) | (33%) | (20%) |



Senate District 20 Distracted Driving-Related Crashes

Interstate Crashes

- Fatal
- Serious Injury

Non-interstate Crashes

- Fatal
- Serious Injury

The blue gradient represents the density of all distracted driving-related crashes.



| Available Crash Data - Calendar Year (CY) | CY 2020 | CY 2021 | CY 2022 | CY 2023 |
|--|---------|---------|---------|---------|
| Total Crashes | 2660 | 2884 | 2508 | 2669 |
| Fatal Crashes | 20 | 21 | 21 | 35 |
| Injury Crashes | 775 | 837 | 713 | 734 |
| Distracted Driving-Related Fatal Crashes | 4 | 2 | 3 | 1 |
| Percent of Distracted Driving-Related Fatal Crashes to Total Fatal Crashes | 20% | 10% | 14% | 3% |
| Distracted Driving-Related Injury Crashes | 153 | 124 | 119 | 99 |
| Percent of Distracted Driving-Related Injury Crashes to Total Injury Crashes | 20% | 15% | 17% | 13% |