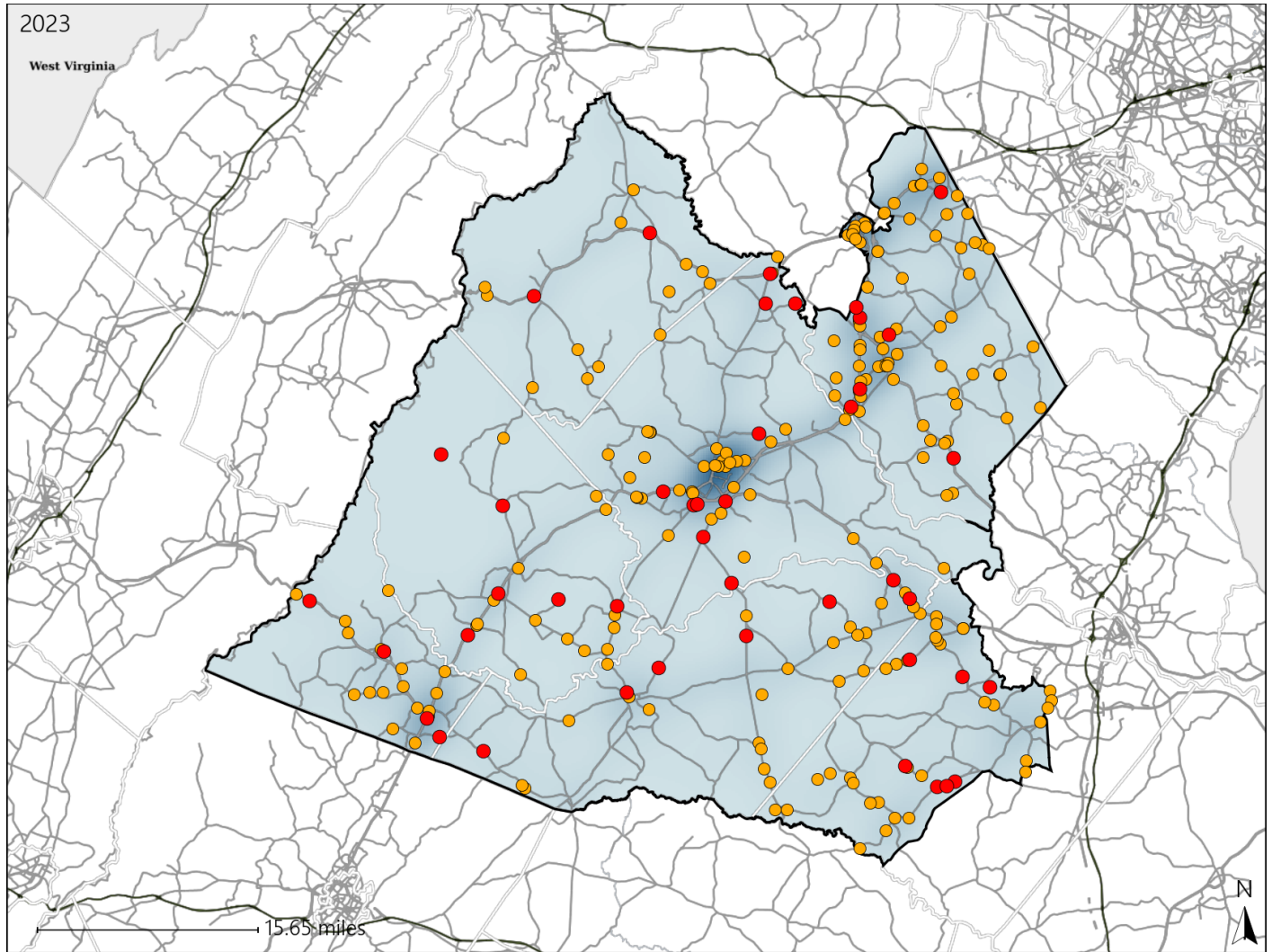


Virginia Senate District 28 Crash Statistics

Report Generated May, 2024

	Count	Highest Time Period(s)	Highest Day(s)	Highest Month(s)
Fatal Crashes	43	9:00am - 11:59am	Thursday	September
Resulting Fatalities	46	(21%)	(23%)	(16%)
Serious Injury Crashes	224	3:00pm - 5:59pm	Friday	August • June
		(22%)	(20%)	(22%)



Senate District 28 Crashes

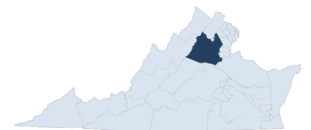
Interstate Crashes

- Fatal
- Serious Injury

Non-interstate Crashes

- Fatal
- Serious Injury

The blue gradient represents the density of all crashes.

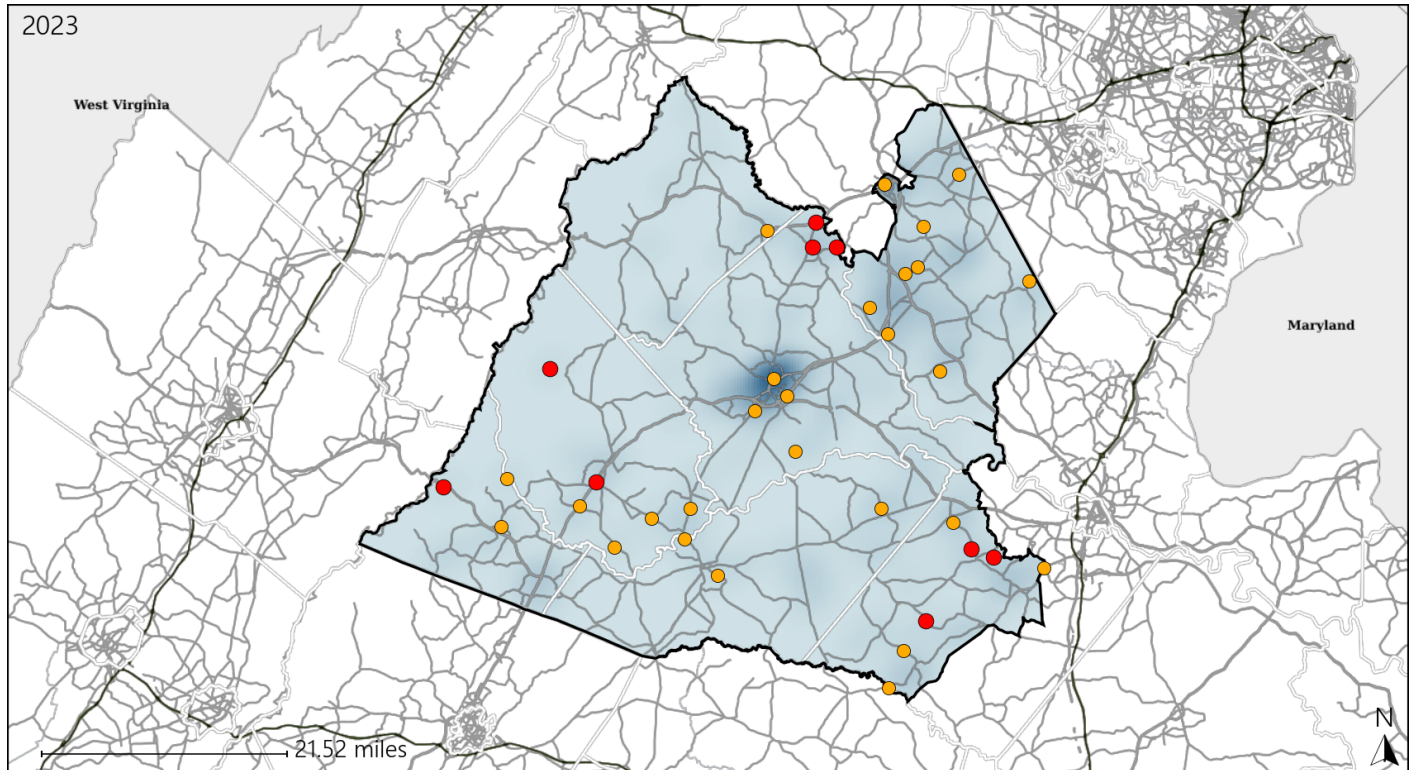


Available Crash Data - Calendar Year (CY)	CY 2020	CY 2021	CY 2022	CY 2023
Total Crashes	2797	3046	3128	3081
Fatal Crashes	30	22	28	43
Injury Crashes	972	1030	1117	1168

Virginia Senate District 28 Alcohol Crash Statistics

Report Generated May, 2024

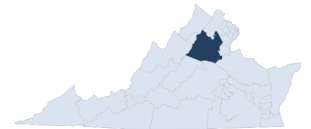
	Count	Highest Time Period(s)	Highest Day(s)	Highest Month(s)
Fatal Crashes	9	6:00pm - 8:59pm	Friday • Saturday	September
Resulting Fatalities	9	(44%)	(66%)	(44%)
Serious Injury Crashes	27	6:00pm - 8:59pm	Saturday	September
		(26%)	(26%)	(19%)



Senate District 28 Alcohol-Related Crashes

Interstate Crashes Non-interstate Crashes
 ● Fatal ● Fatal
 ● Serious Injury ● Serious Injury

The blue gradient represents the density of all alcohol-related crashes.

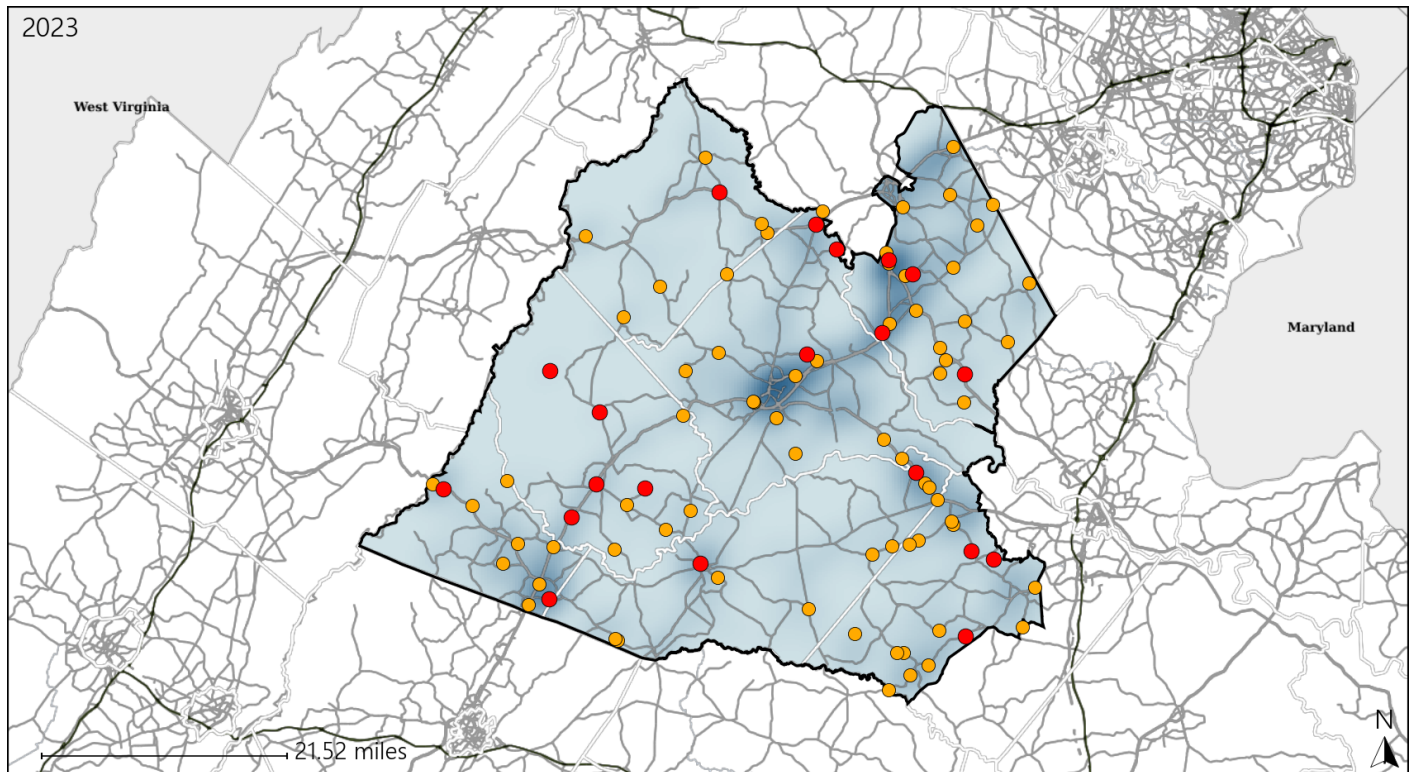


Available Crash Data - Calendar Year (CY)	CY 2020	CY 2021	CY 2022	CY 2023
Total Crashes	2797	3046	3128	3081
Fatal Crashes	30	22	28	43
Injury Crashes	972	1030	1117	1168
Alcohol-Related Fatal Crashes	9	6	10	9
Percent of Alcohol-Related Fatal Crashes to Total Fatal Crashes	30%	27%	36%	21%
Alcohol-Related Injury Crashes	95	76	96	98
Percent of Alcohol-Related Injury Crashes to Total Injury Crashes	10%	7%	9%	8%

Virginia Senate District 28 Speed Crash Statistics

Report Generated May, 2024

	Count	Highest Time Period(s)	Highest Day(s)	Highest Month(s)
Fatal Crashes	20	6:00am - 8:59am	Wednesday	October
Resulting Fatalities	21	9:00pm - 11:59pm (40%)	(25%)	(20%)
Serious Injury Crashes	74	3:00pm - 5:59pm 6:00pm - 8:59pm (40%)	Saturday (23%)	September (15%)



Senate District 28 Speed-Related Crashes

Interstate Crashes Non-interstate Crashes
 ● Fatal ● Fatal
 ⊕ Serious Injury ⊕ Serious Injury

The blue gradient represents the density of all speed-related crashes.

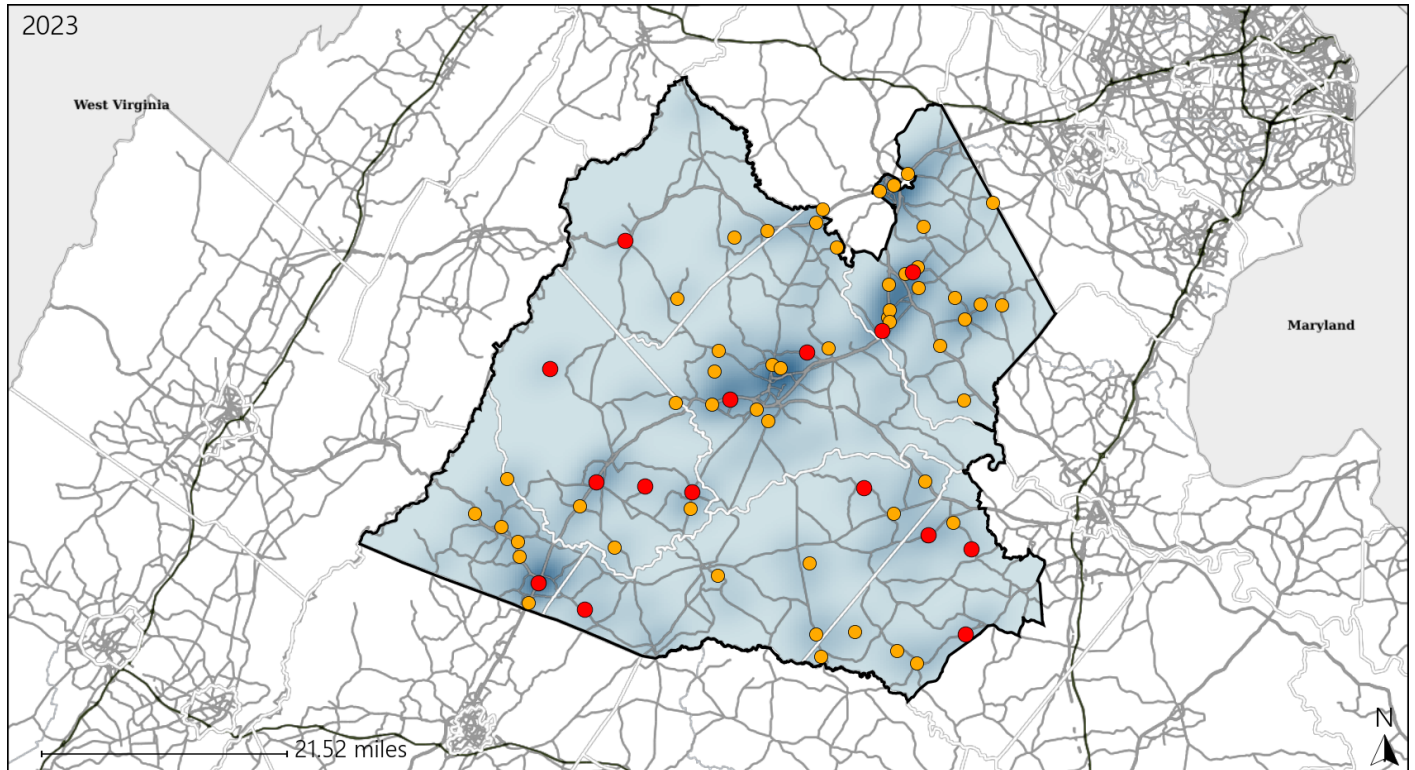


Available Crash Data - Calendar Year (CY)	CY 2020	CY 2021	CY 2022	CY 2023
Total Crashes	2797	3046	3128	3081
Fatal Crashes	30	22	28	43
Injury Crashes	972	1030	1117	1168
Speed-Related Fatal Crashes	14	9	18	20
Percent of Speed-Related Fatal Crashes to Total Fatal Crashes	47%	41%	64%	47%
Speed-Related Injury Crashes	246	244	283	278
Percent of Speed-Related Injury Crashes to Total Injury Crashes	25%	24%	25%	24%

Virginia Senate District 28 Unrestrained Crash Statistics

Report Generated May, 2024

	Count	Highest Time Period(s)	Highest Day(s)	Highest Month(s)
Fatal Crashes	15	9:00am - 11:59am	Wednesday	July
Unrestrained Fatalities	16	(27%)	(33%)	(20%)
Serious Injury Crashes	54	6:00pm - 8:59pm	Friday	July
		(22%)	(20%)	(15%)



Senate District 28 Unrestrained-Related Crashes

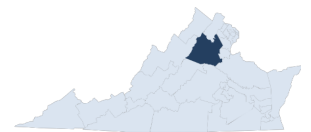
Interstate Crashes

Non-interstate Crashes

- Fatal
- Serious Injury

- Fatal
- Serious Injury

The blue gradient represents the density of all unrestrained-related crashes.

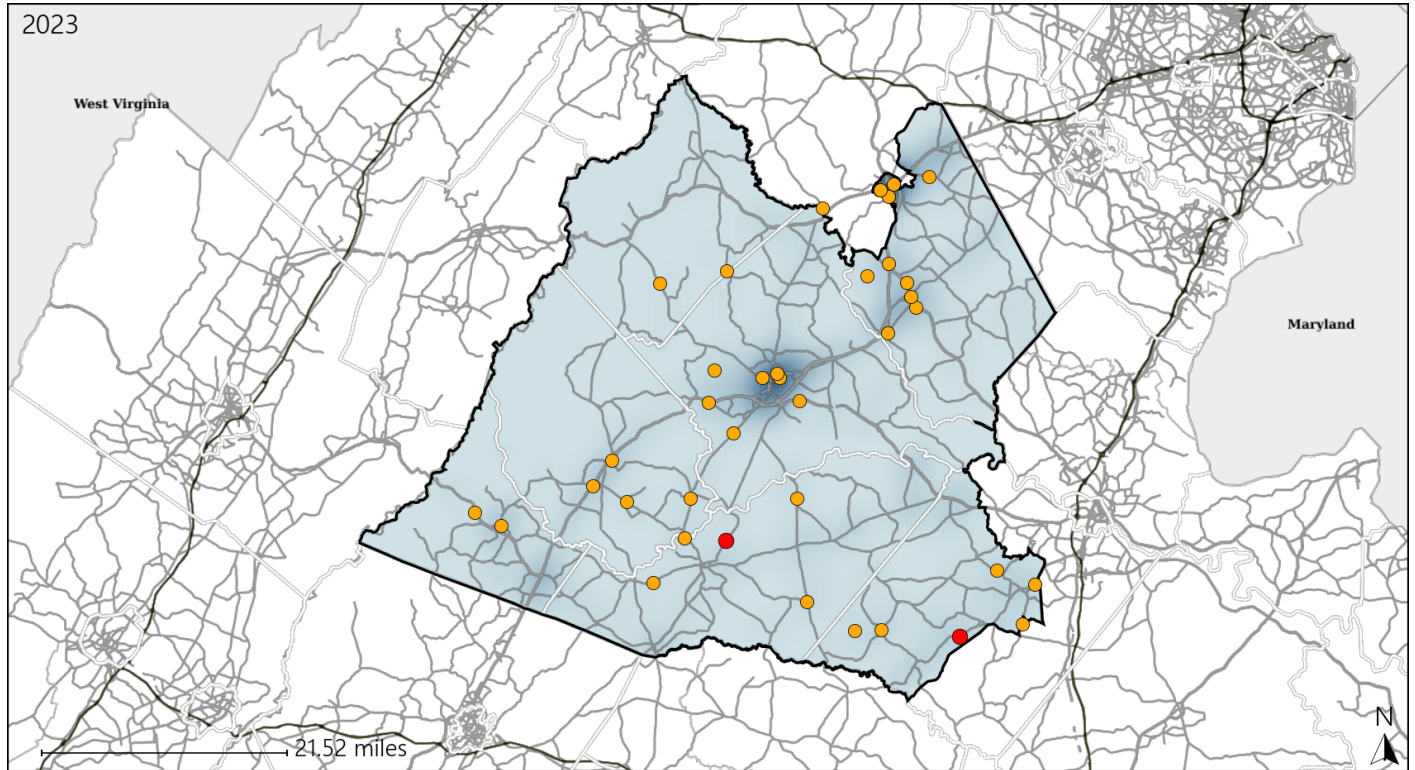


Available Crash Data - Calendar Year (CY)	CY 2020	CY 2021	CY 2022	CY 2023
Total Crashes	2797	3046	3128	3081
Fatalities	34	25	29	46
Injuries	1446	1591	1702	1802
Unrestrained Fatalities	18	11	12	16
Percent of Unrestrained Fatalities to Total Fatalities	53%	44%	41%	35%
Unrestrained Injuries	161	105	149	142
Percent of Unrestrained Injuries to Total Injuries	11%	7%	9%	8%

Virginia Senate District 28 Distracted Driving Crash Statistics

Report Generated May, 2024

	Count	Highest Time Period(s)	Highest Day(s)	Highest Month(s)
Fatal Crashes	2	3:00am - 5:59am	Saturday • Thursday	March • September
Resulting Fatalities	2	Noon - 2:59pm (100%)	(100%)	(100%)
Serious Injury Crashes	36	3:00pm - 5:59pm (25%)	Thursday (25%)	August • January (28%)



Senate District 28 Distracted Driving-Related Crashes

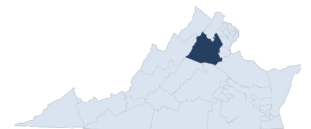
Interstate Crashes

- Fatal
- Serious Injury

Non-interstate Crashes

- Fatal
- Serious Injury

The blue gradient represents the density of all distracted driving-related crashes.



Available Crash Data - Calendar Year (CY)	CY 2020	CY 2021	CY 2022	CY 2023
Total Crashes	2797	3046	3128	3081
Fatal Crashes	30	22	28	43
Injury Crashes	972	1030	1117	1168
Distracted Driving-Related Fatal Crashes	4	4	4	2
Percent of Distracted Driving-Related Fatal Crashes to Total Fatal Crashes	13%	18%	14%	5%
Distracted Driving-Related Injury Crashes	157	163	196	192
Percent of Distracted Driving-Related Injury Crashes to Total Injury Crashes	16%	16%	18%	16%