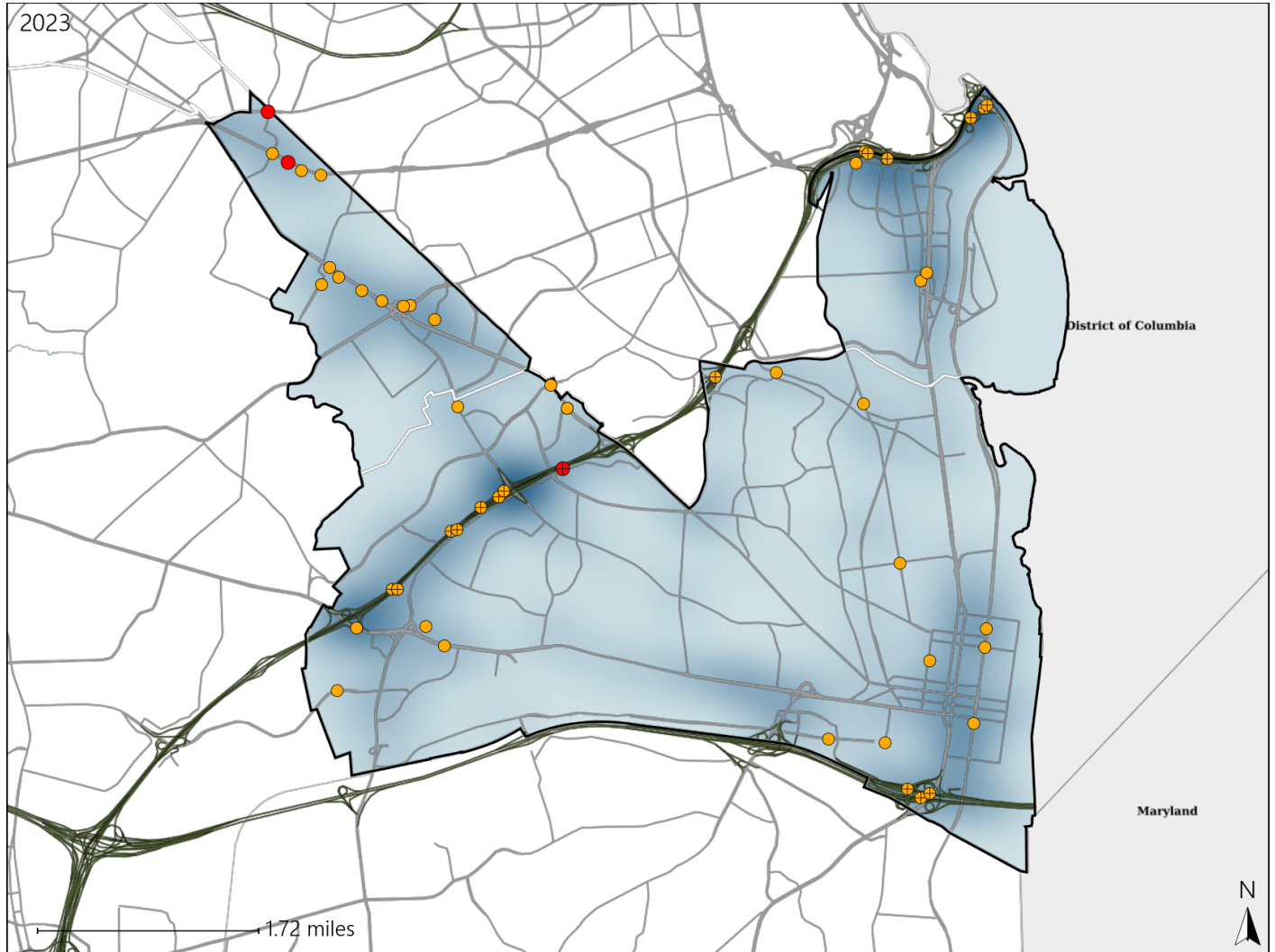


Virginia Senate District 39 Crash Statistics

Report Generated May, 2024

	Count	Highest Time Period(s)	Highest Day(s)	Highest Month(s)
Fatal Crashes	3	3:00pm - 5:59pm	Friday	April + March
Resulting Fatalities	3	6:00am - 8:59am (66%)	(67%)	(66%)
Serious Injury Crashes	48	Midnight - 2:59am (21%)	Sunday (25%)	December (17%)



Senate District 39 Crashes

Interstate Crashes

- Fatal
- ⊕ Serious Injury

Non-interstate Crashes

- Fatal
- Serious Injury

The blue gradient represents the density of all crashes.

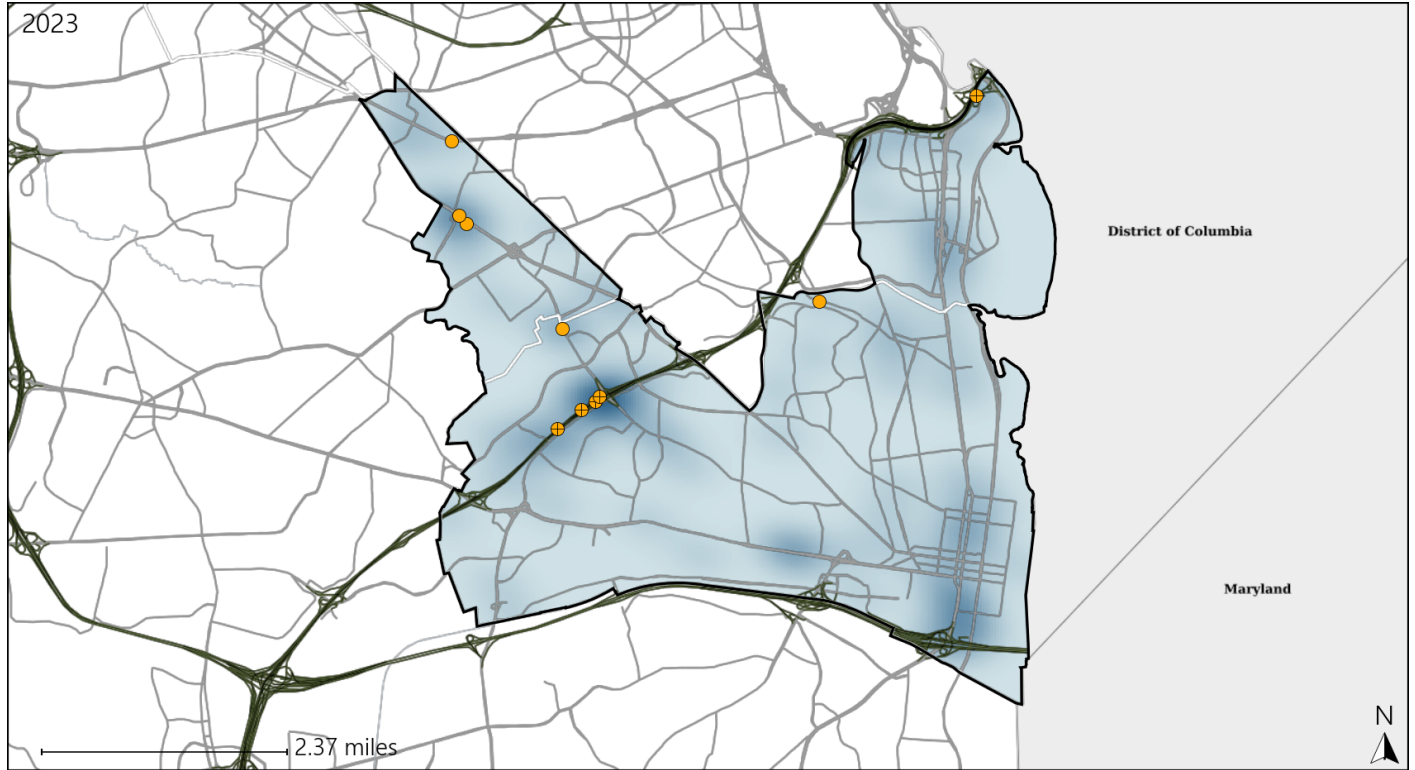


Available Crash Data - Calendar Year (CY)	CY 2020	CY 2021	CY 2022	CY 2023
Total Crashes	1379	1626	1677	1699
Fatal Crashes	8	8	9	3
Injury Crashes	411	459	454	494

Virginia Senate District 39 Alcohol Crash Statistics

Report Generated May, 2024

	Count	Highest Time Period(s)	Highest Day(s)	Highest Month(s)
Fatal Crashes	0	-	-	-
Resulting Fatalities	0	-	-	-
Serious Injury Crashes	10	Midnight - 2:59am (40%)	Saturday (40%)	August • November (40%)



Senate District 39 Alcohol-Related Crashes

Interstate Crashes Non-interstate Crashes
 ● Fatal ● Fatal
 ⊕ Serious Injury ⊕ Serious Injury

The blue gradient represents the density of all alcohol-related crashes.

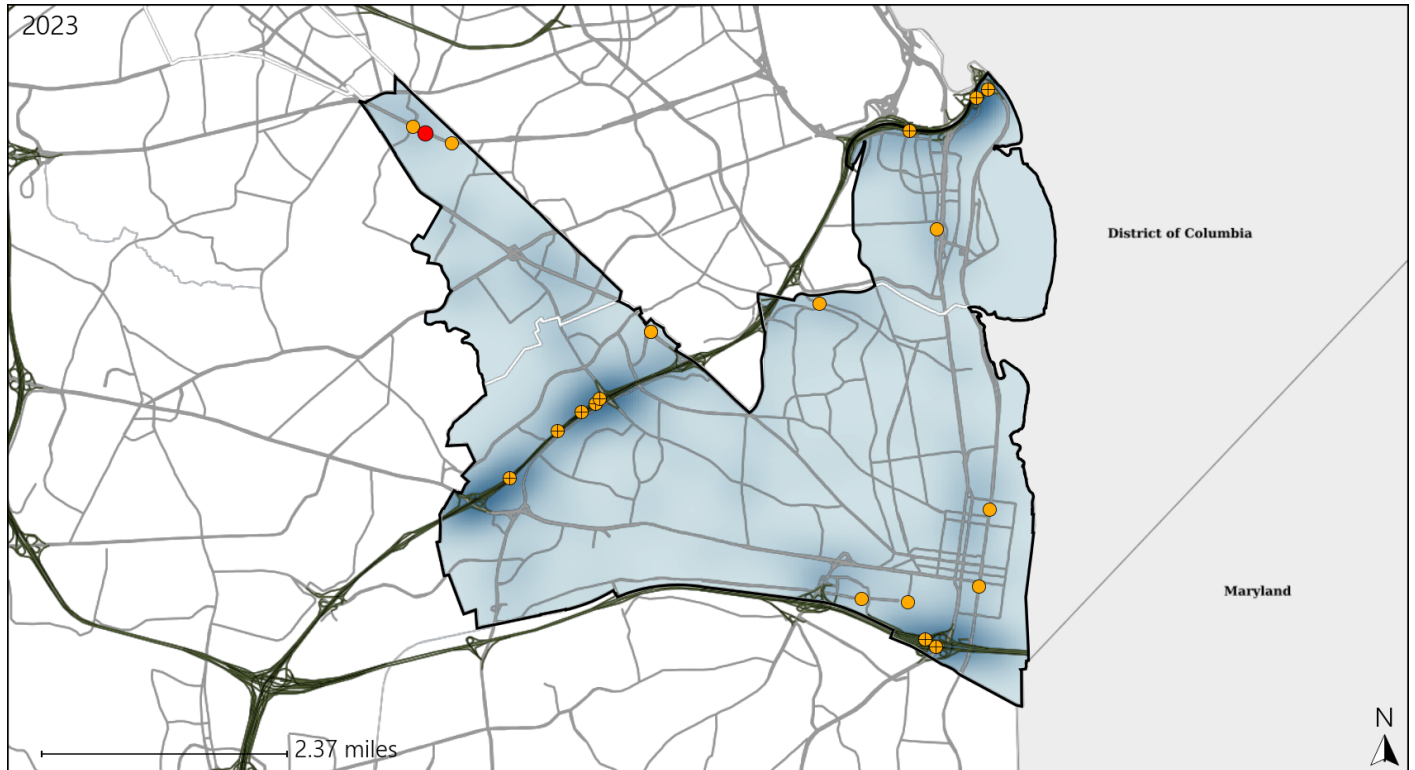


Available Crash Data - Calendar Year (CY)	CY 2020	CY 2021	CY 2022	CY 2023
Total Crashes	1379	1626	1677	1699
Fatal Crashes	8	8	9	3
Injury Crashes	411	459	454	494
Alcohol-Related Fatal Crashes	2	1	2	0
Percent of Alcohol-Related Fatal Crashes to Total Fatal Crashes	25%	13%	22%	0%
Alcohol-Related Injury Crashes	34	34	42	38
Percent of Alcohol-Related Injury Crashes to Total Injury Crashes	8%	7%	9%	8%

Virginia Senate District 39 Speed Crash Statistics

Report Generated May, 2024

	Count	Highest Time Period(s)	Highest Day(s)	Highest Month(s)
Fatal Crashes	1	Midnight - 2:59am	Friday	April
Resulting Fatalities	1	(100%)	(100%)	(100%)
Serious Injury Crashes	20	Midnight - 2:59am	Saturday	August • March
		(40%)	(30%)	(30%)



Senate District 39 Speed-Related Crashes

Interstate Crashes Non-interstate Crashes
 ● Fatal ● Fatal
 ⊕ Serious Injury ⊕ Serious Injury

The blue gradient represents the density of all speed-related crashes.

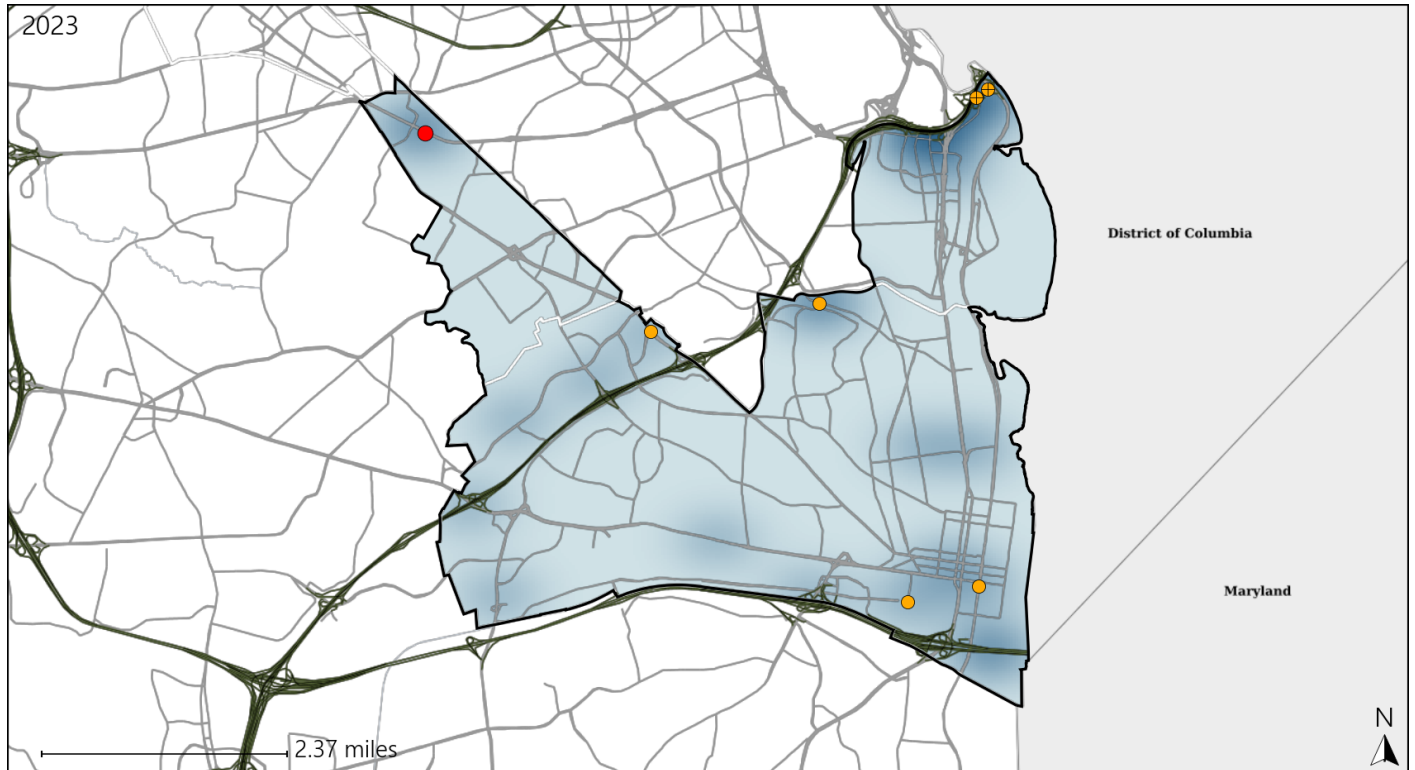


Available Crash Data - Calendar Year (CY)	CY 2020	CY 2021	CY 2022	CY 2023
Total Crashes	1379	1626	1677	1699
Fatal Crashes	8	8	9	3
Injury Crashes	411	459	454	494
Speed-Related Fatal Crashes	5	1	5	1
Percent of Speed-Related Fatal Crashes to Total Fatal Crashes	63%	13%	56%	33%
Speed-Related Injury Crashes	100	130	121	124
Percent of Speed-Related Injury Crashes to Total Injury Crashes	24%	28%	27%	25%

Virginia Senate District 39 Unrestrained Crash Statistics

Report Generated May, 2024

	Count	Highest Time Period(s)	Highest Day(s)	Highest Month(s)
Fatal Crashes	1	Midnight - 2:59am	Friday	April
Unrestrained Fatalities	1	(100%)	(100%)	(100%)
Serious Injury Crashes	6	9:00pm - 11:59pm	Saturday • Sunday	March
		(67%)	(66%)	(33%)



Senate District 39 Unrestrained-Related Crashes

Interstate Crashes

- Fatal
- Serious Injury

Non-interstate Crashes

- Fatal
- Serious Injury

The blue gradient represents the density of all unrestrained-related crashes.

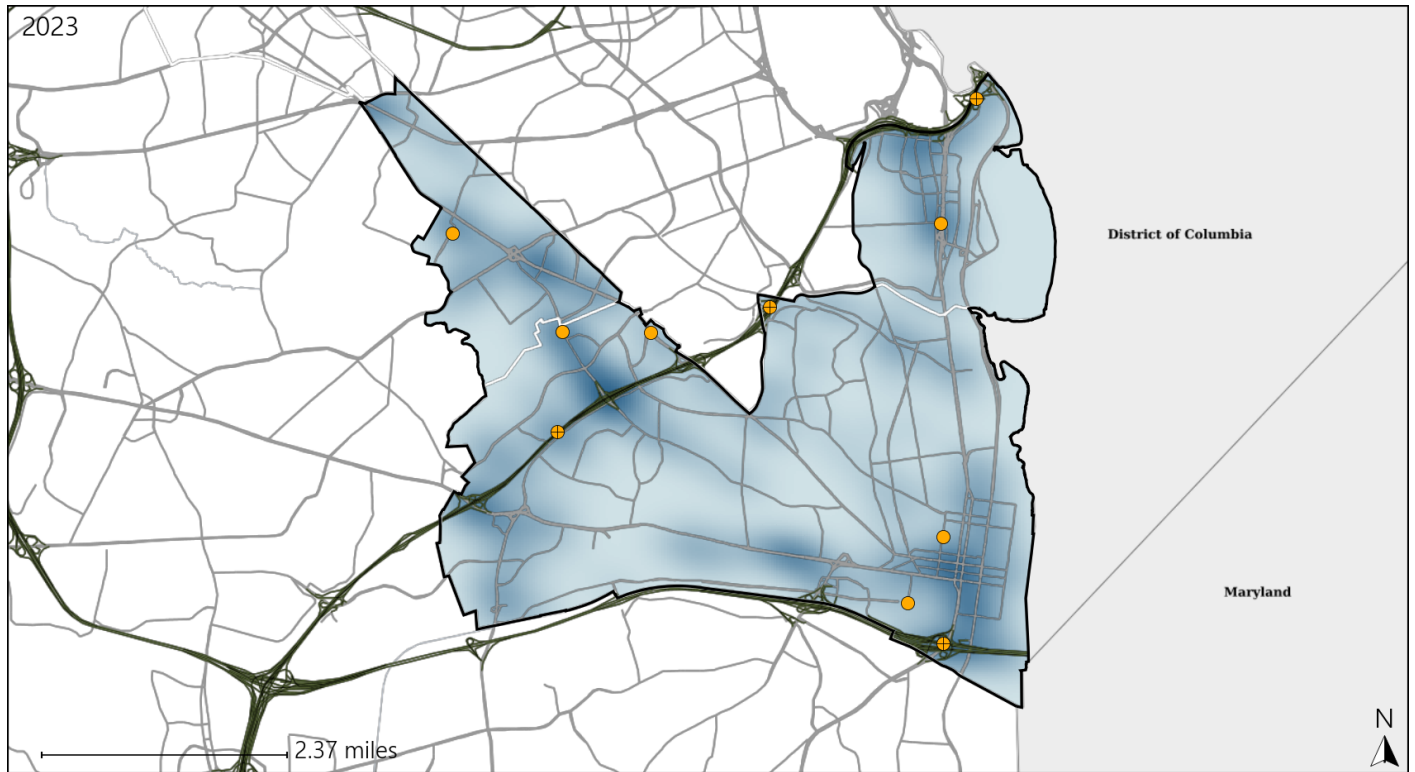


Available Crash Data - Calendar Year (CY)	CY 2020	CY 2021	CY 2022	CY 2023
Total Crashes	1379	1626	1677	1699
Fatalities	10	8	9	3
Injuries	605	685	682	785
Unrestrained Fatalities	1	0	1	1
Percent of Unrestrained Fatalities to Total Fatalities	10%	0%	11%	33%
Unrestrained Injuries	22	22	37	27
Percent of Unrestrained Injuries to Total Injuries	4%	3%	5%	3%

Virginia Senate District 39 Distracted Driving Crash Statistics

Report Generated May, 2024

	Count	Highest Time Period(s)	Highest Day(s)	Highest Month(s)
Fatal Crashes	0	-	-	-
Resulting Fatalities	0	-	-	-
Serious Injury Crashes	10	9:00pm - 11:59pm Midnight - 2:59am (60%)	Monday (30%)	December (40%)



Senate District 39 Distracted Driving-Related Crashes

- | | |
|--------------------|------------------------|
| Interstate Crashes | Non-interstate Crashes |
| ● Fatal | ● Fatal |
| ⊕ Serious Injury | ● Serious Injury |

The blue gradient represents the density of all distracted driving-related crashes.



Available Crash Data - Calendar Year (CY)	CY 2020	CY 2021	CY 2022	CY 2023
Total Crashes	1379	1626	1677	1699
Fatal Crashes	8	8	9	3
Injury Crashes	411	459	454	494
Distracted Driving-Related Fatal Crashes	0	2	0	0
Percent of Distracted Driving-Related Fatal Crashes to Total Fatal Crashes	0%	25%	0%	0%
Distracted Driving-Related Injury Crashes	90	100	98	99
Percent of Distracted Driving-Related Injury Crashes to Total Injury Crashes	22%	22%	22%	20%