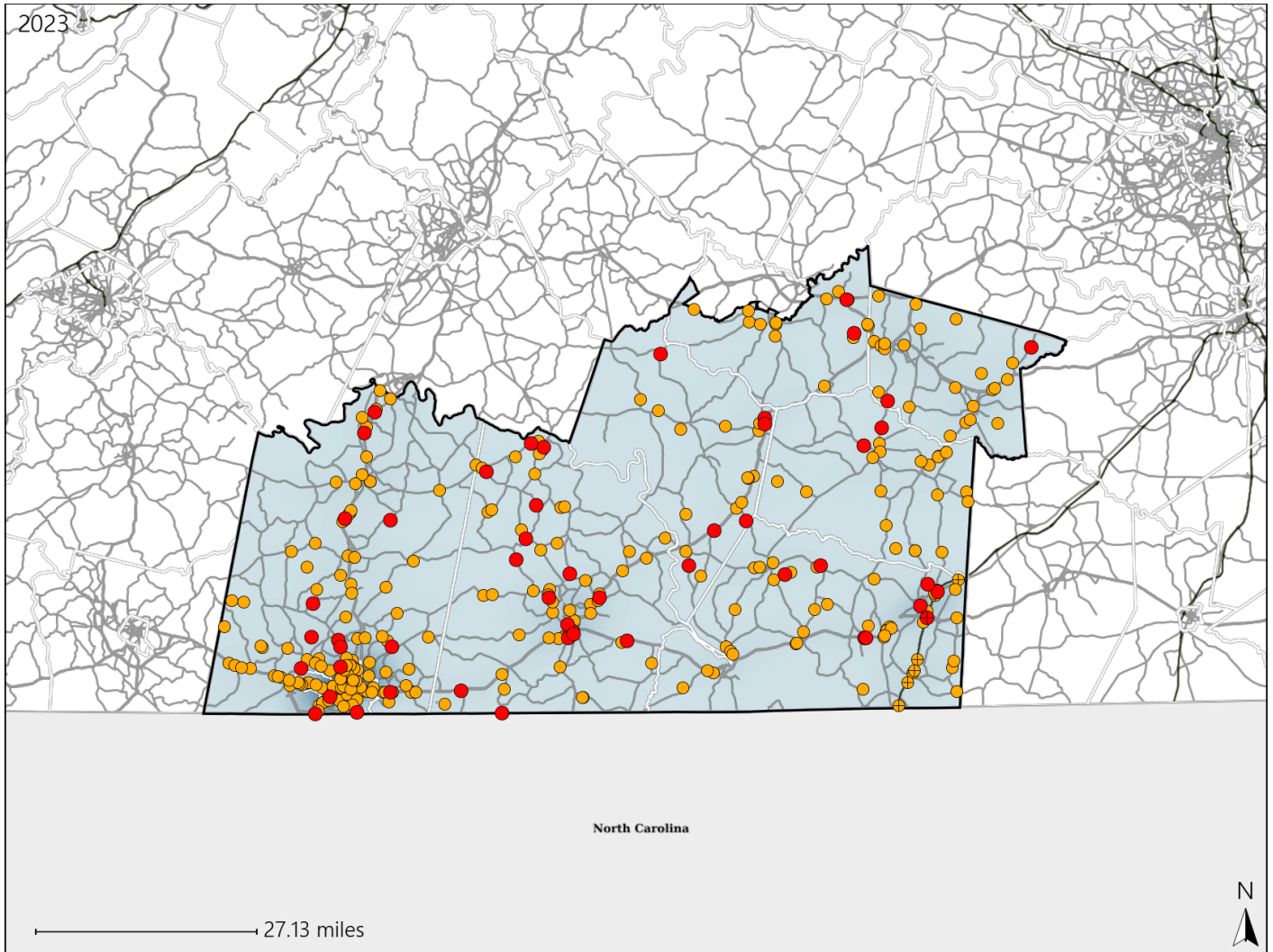


Virginia Senate District 9 Crash Statistics

Report Generated May, 2024

	Count	Highest Time Period(s)	Highest Day(s)	Highest Month(s)
Fatal Crashes	51	3:00pm - 5:59pm	Thursday	July
Resulting Fatalities	59	(22%)	(20%)	(14%)
Serious Injury Crashes	299	6:00pm - 8:59pm	Friday	May
		(18%)	(18%)	(12%)



Senate District 9 Crashes

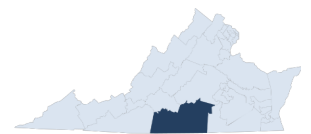
Interstate Crashes

- Fatal
- Serious Injury

Non-interstate Crashes

- Fatal
- Serious Injury

The blue gradient represents the density of all crashes.

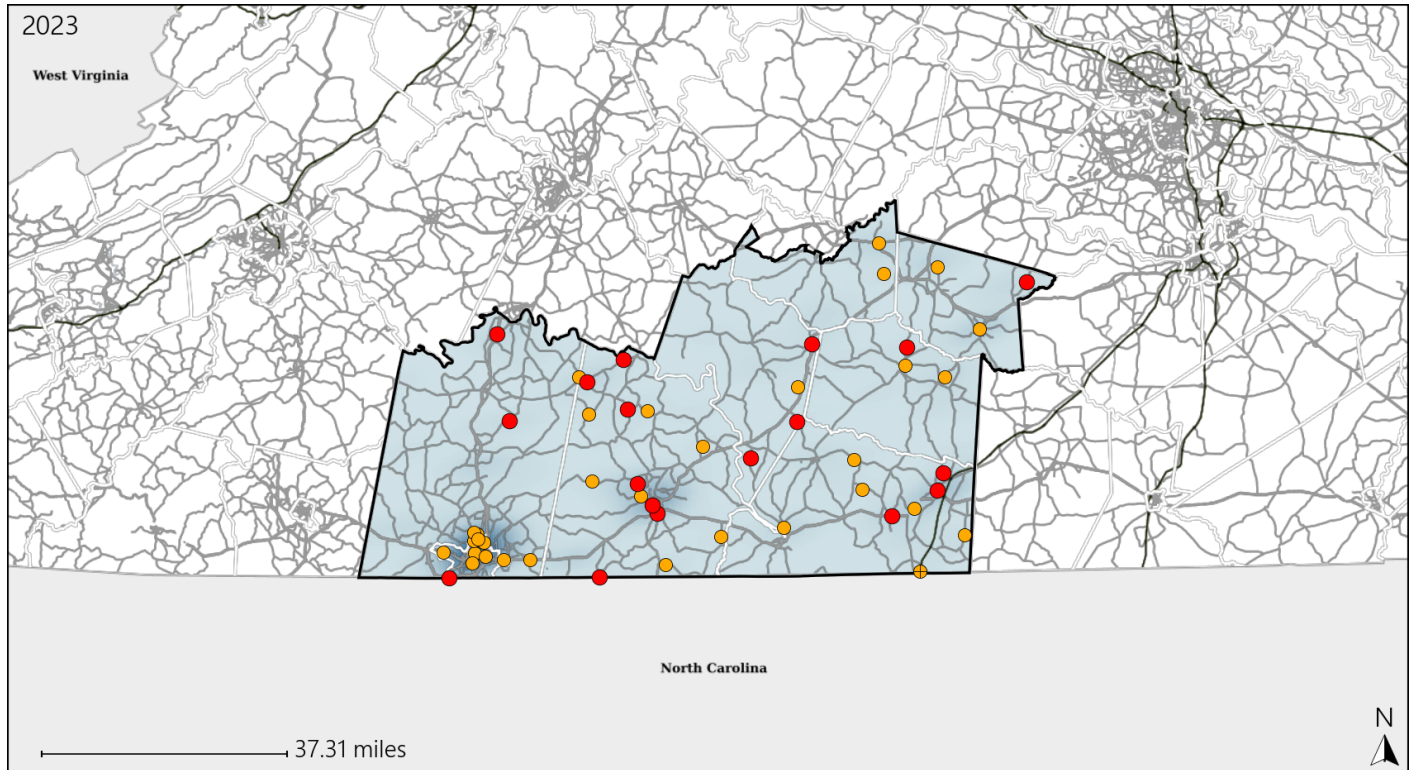


Available Crash Data - Calendar Year (CY)	CY 2020	CY 2021	CY 2022	CY 2023
Total Crashes	3140	3492	3301	3695
Fatal Crashes	44	55	66	51
Injury Crashes	1036	1120	1103	1167

Virginia Senate District 9 Alcohol Crash Statistics

Report Generated May, 2024

	Count	Highest Time Period(s)	Highest Day(s)	Highest Month(s)
Fatal Crashes	18	9:00pm - 11:59pm	Friday	July
Resulting Fatalities	23	(33%)	(28%)	(28%)
Serious Injury Crashes	32	Midnight - 2:59am	Friday • Saturday	November • September
		(22%)	(44%)	(24%)



Senate District 9 Alcohol-Related Crashes

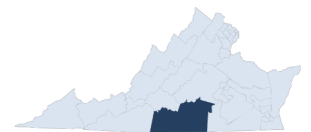
Interstate Crashes

Non-interstate Crashes

- Fatal
- Serious Injury

- Fatal
- Serious Injury

The blue gradient represents the density of all alcohol-related crashes.

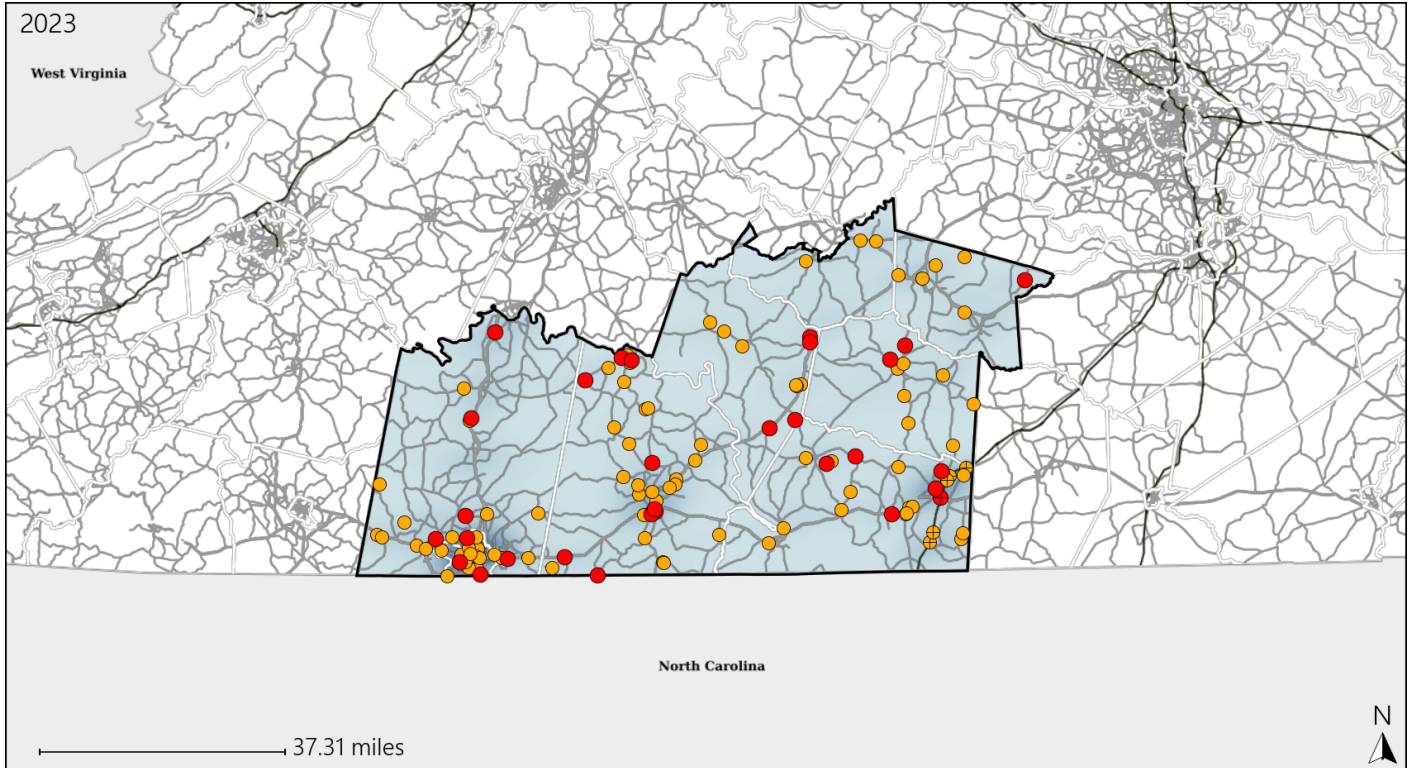


Available Crash Data - Calendar Year (CY)	CY 2020	CY 2021	CY 2022	CY 2023
Total Crashes	3140	3492	3301	3695
Fatal Crashes	44	55	66	51
Injury Crashes	1036	1120	1103	1167
Alcohol-Related Fatal Crashes	16	11	25	18
Percent of Alcohol-Related Fatal Crashes to Total Fatal Crashes	36%	20%	38%	35%
Alcohol-Related Injury Crashes	104	88	93	76
Percent of Alcohol-Related Injury Crashes to Total Injury Crashes	10%	8%	8%	7%

Virginia Senate District 9 Speed Crash Statistics

Report Generated May, 2024

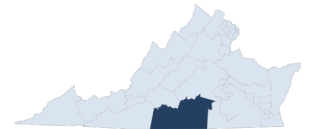
	Count	Highest Time Period(s)	Highest Day(s)	Highest Month(s)
Fatal Crashes	30	6:00pm - 8:59pm	Thursday	July
Resulting Fatalities	36	(23%)	(30%)	(17%)
Serious Injury Crashes	93	6:00pm - 8:59pm	Friday - Saturday	April - February
		(22%)	(36%)	(26%)



Senate District 9 Speed-Related Crashes

Interstate Crashes Non-interstate Crashes
 ● Fatal ● Fatal
 ⊕ Serious Injury ⊕ Serious Injury

The blue gradient represents the density of all speed-related crashes.

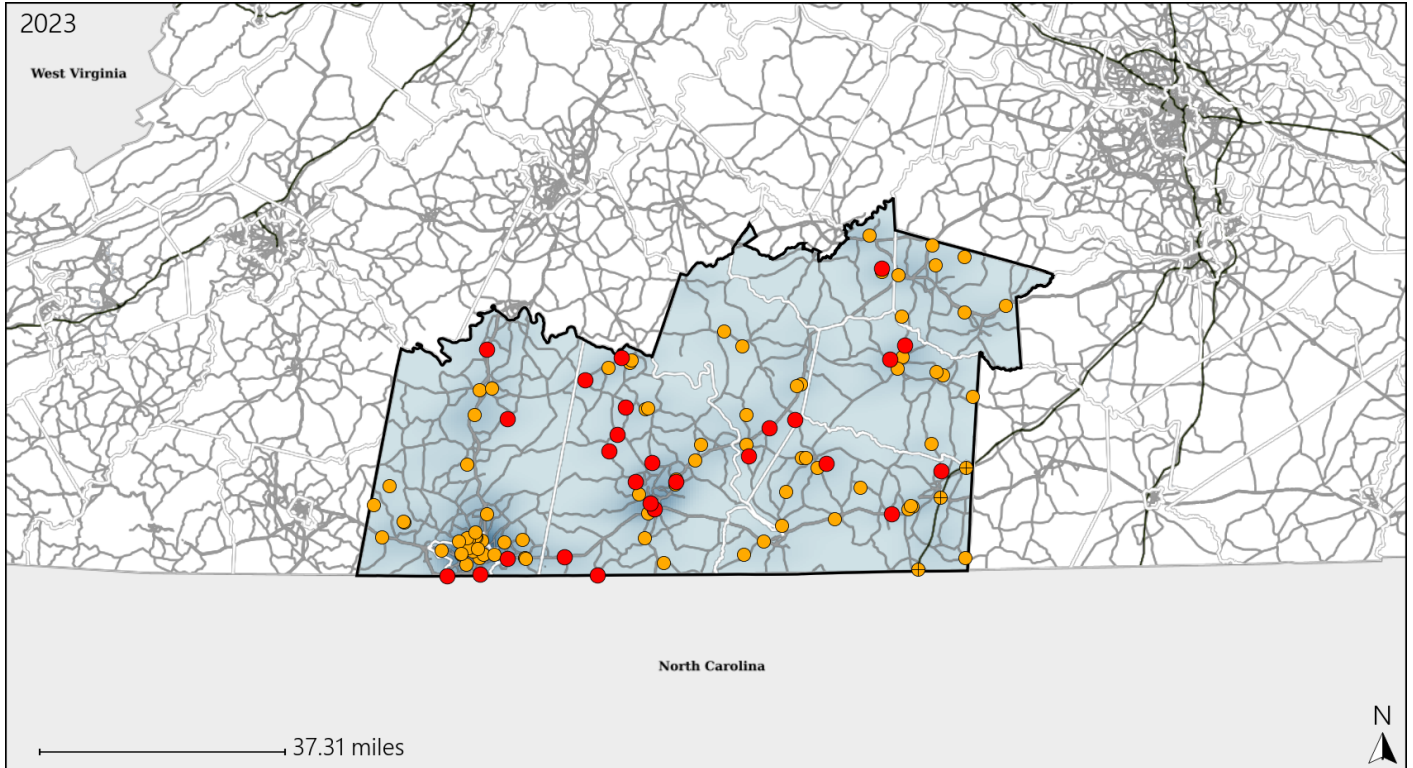


Available Crash Data - Calendar Year (CY)	CY 2020	CY 2021	CY 2022	CY 2023
Total Crashes	3140	3492	3301	3695
Fatal Crashes	44	55	66	51
Injury Crashes	1036	1120	1103	1167
Speed-Related Fatal Crashes	18	25	27	30
Percent of Speed-Related Fatal Crashes to Total Fatal Crashes	41%	45%	41%	59%
Speed-Related Injury Crashes	231	231	246	246
Percent of Speed-Related Injury Crashes to Total Injury Crashes	22%	21%	22%	21%

Virginia Senate District 9 Unrestrained Crash Statistics

Report Generated May, 2024

	Count	Highest Time Period(s)	Highest Day(s)	Highest Month(s)
Fatal Crashes	26	6:00pm - 8:59pm	Wednesday	January
Unrestrained Fatalities	28	(23%)	(31%)	(19%)
Serious Injury Crashes	83	9:00pm - 11:59pm	Saturday	July - May
		(19%)	(22%)	(24%)



Senate District 9 Unrestrained-Related Crashes

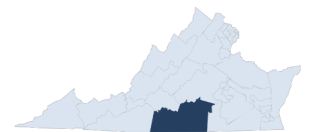
Interstate Crashes

- Fatal
- Serious Injury

Non-interstate Crashes

- Fatal
- Serious Injury

The blue gradient represents the density of all unrestrained-related crashes.

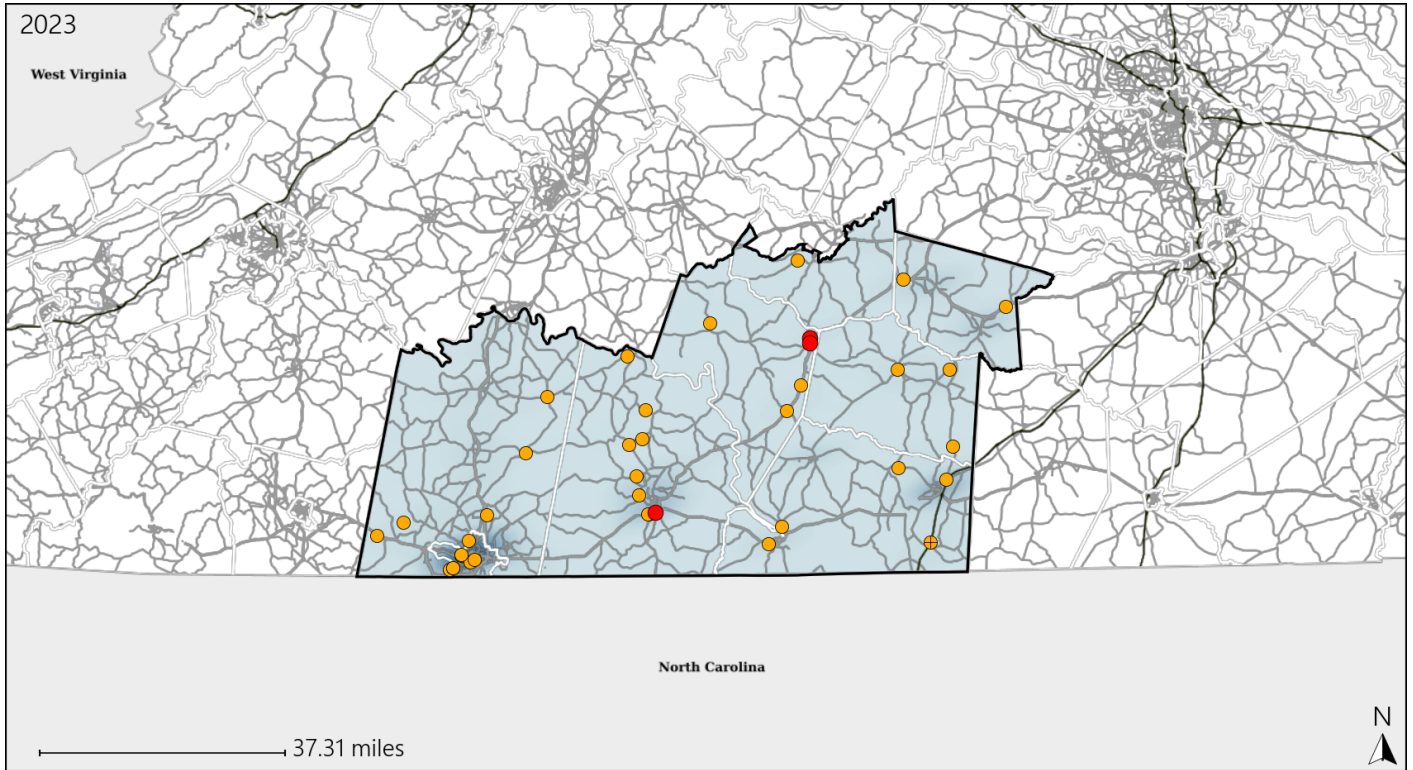


Available Crash Data - Calendar Year (CY)	CY 2020	CY 2021	CY 2022	CY 2023
Total Crashes	3140	3492	3301	3695
Fatalities	46	61	73	59
Injuries	1439	1557	1499	1686
Unrestrained Fatalities	19	30	41	28
Percent of Unrestrained Fatalities to Total Fatalities	41%	49%	56%	47%
Unrestrained Injuries	171	225	186	208
Percent of Unrestrained Injuries to Total Injuries	12%	14%	12%	12%

Virginia Senate District 9 Distracted Driving Crash Statistics

Report Generated May, 2024

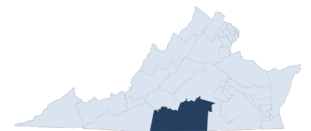
	Count	Highest Time Period(s)	Highest Day(s)	Highest Month(s)
Fatal Crashes	3	3:00am - 5:59am	Saturday • Sunday	August • July
Resulting Fatalities	3	3:00pm - 5:59pm (66%)	(66%)	(66%)
Serious Injury Crashes	35	6:00pm - 8:59pm (23%)	Friday (26%)	September (20%)



Senate District 9 Distracted Driving-Related Crashes

- | | |
|--|--|
| Interstate Crashes | Non-interstate Crashes |
| ● Fatal | ● Fatal |
| ● Serious Injury | ● Serious Injury |

The blue gradient represents the density of all distracted driving-related crashes.



Available Crash Data - Calendar Year (CY)	CY 2020	CY 2021	CY 2022	CY 2023
Total Crashes	3140	3492	3301	3695
Fatal Crashes	44	55	66	51
Injury Crashes	1036	1120	1103	1167
Distracted Driving-Related Fatal Crashes	6	3	7	3
Percent of Distracted Driving-Related Fatal Crashes to Total Fatal Crashes	14%	5%	11%	6%
Distracted Driving-Related Injury Crashes	154	172	160	154
Percent of Distracted Driving-Related Injury Crashes to Total Injury Crashes	15%	15%	15%	13%