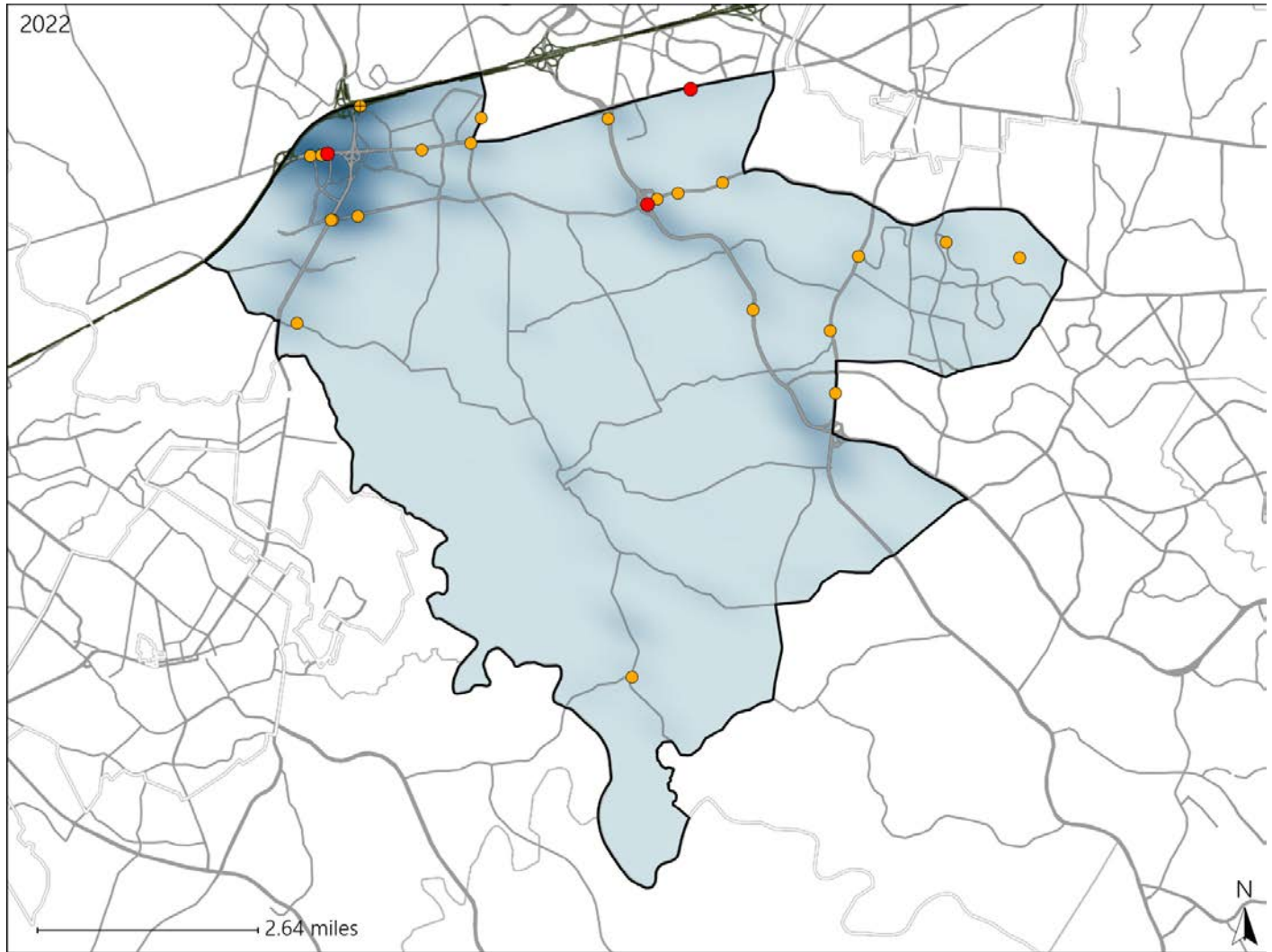


# Virginia House District 10 Crash Statistics

Report Generated May, 2023

	Count	Highest Time Period(s)	Highest Day(s)	Highest Month(s)
<b>Fatal Crashes</b>	<b>3</b>	<b>9:00pm - 11:59pm</b>	<b>Monday • Saturday</b>	<b>January • June</b>
<b>Resulting Fatalities</b>	<b>3</b>	(67%)	(66%)	(66%)
<b>Serious Injury Crashes</b>	<b>21</b>	<b>3:00pm - 5:59pm</b>	<b>Sunday</b>	<b>September</b>
		(33%)	(24%)	(19%)



### House District 10 Crashes

Interstate Crashes

- Fatal
- Serious Injury

Non-interstate Crashes

- Fatal
- Serious Injury

The blue gradient represents the density of all crashes.

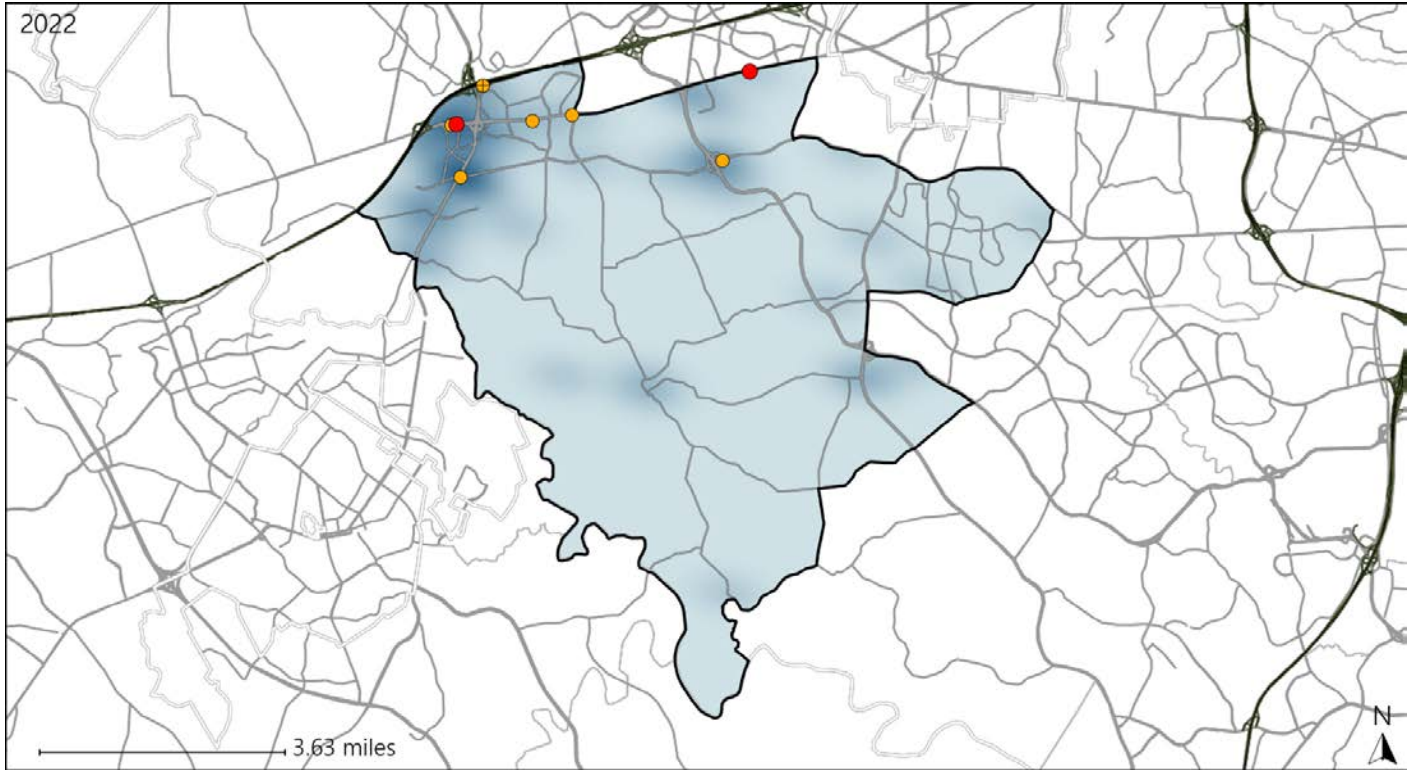


Available Crash Data - Calendar Year (CY)	CY 2019	CY 2020	CY 2021	CY 2022
<b>Total Crashes</b>	<b>1063</b>	<b>716</b>	<b>798</b>	<b>988</b>
<b>Fatal Crashes</b>	<b>3</b>	<b>2</b>	<b>2</b>	<b>3</b>
<b>Injury Crashes</b>	<b>309</b>	<b>186</b>	<b>215</b>	<b>248</b>





# Virginia House District 10 Alcohol Crash Statistics

Report Generated May, 2023

	Count	Highest Time Period(s)	Highest Day(s)	Highest Month(s)
<b>Fatal Crashes</b>	<b>2</b>	<b>9:00pm - 11:59pm</b>	<b>Monday • Saturday</b>	<b>January • November</b>
<b>Resulting Fatalities</b>	<b>2</b>	(100%)	(100%)	(100%)
<b>Serious Injury Crashes</b>	<b>6</b>	<b>9:00pm - 11:59pm</b>	<b>Sunday</b>	<b>April</b>
		(50%)	(33%)	(50%)



## House District 10 Alcohol-Related Crashes

Interstate Crashes                      Non-interstate Crashes  
 Fatal                                       Fatal  
 Serious Injury                               Serious Injury

The blue gradient represents the density of all alcohol-related crashes.

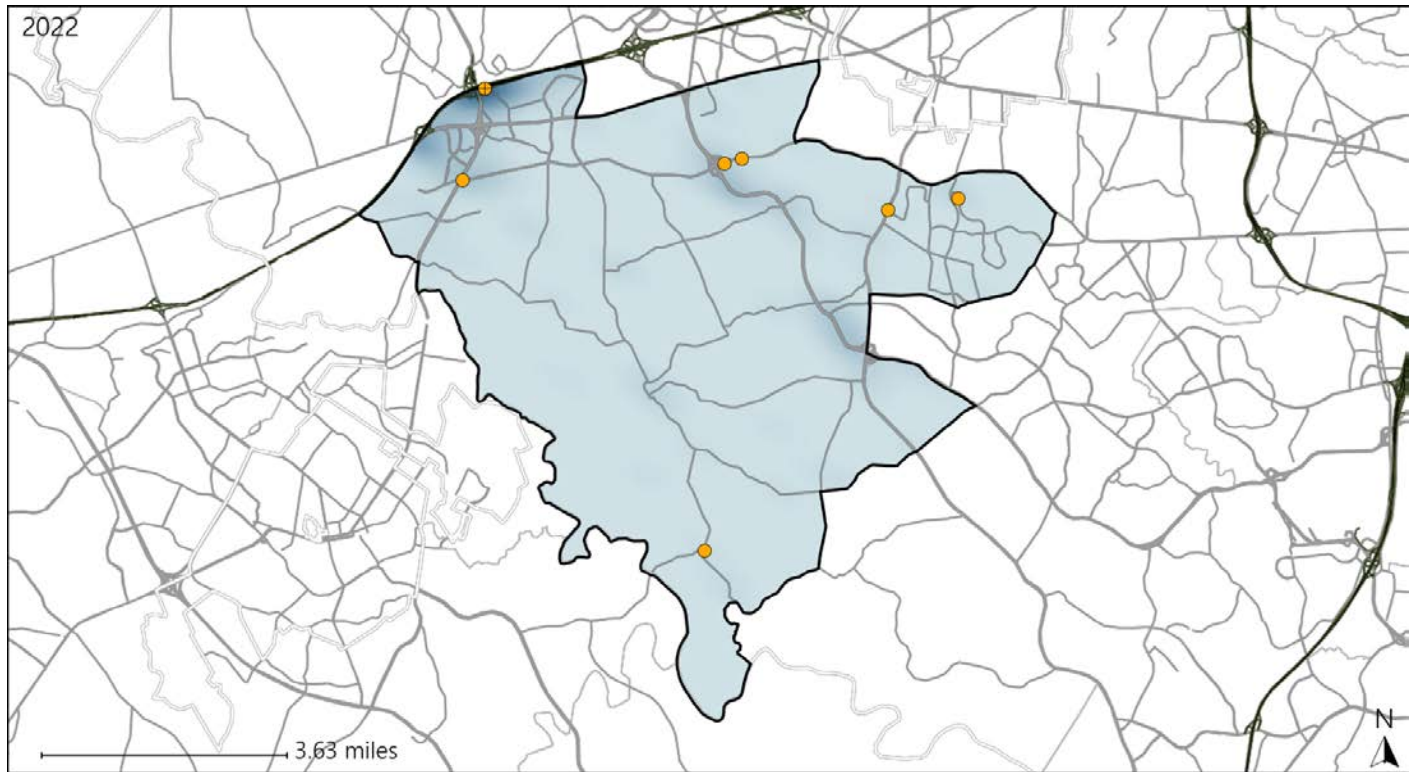


Available Crash Data - Calendar Year (CY)	CY 2019	CY 2020	CY 2021	CY 2022
Total Crashes	1063	716	798	988
Fatal Crashes	3	2	2	3
Injury Crashes	309	186	215	248
Alcohol-Related Fatal Crashes	3	2	1	2
Percent of Alcohol-Related Fatal Crashes to Total Fatal Crashes	100%	100%	50%	67%
Alcohol-Related Injury Crashes	17	13	16	17
Percent of Alcohol-Related Injury Crashes to Total Injury Crashes	6%	7%	7%	7%

# Virginia House District 10 Speed Crash Statistics

Report Generated May, 2023

	Count	Highest Time Period(s)	Highest Day(s)	Highest Month(s)
<b>Fatal Crashes</b>	0	-	-	-
<b>Resulting Fatalities</b>	0	-	-	-
<b>Serious Injury Crashes</b>	7	3:00pm - 5:59pm 9:00am - 11:59am (58%)	Sunday (43%)	April - September (58%)



### House District 10 Speed-Related Crashes

Interstate Crashes                      Non-interstate Crashes  
 ● Fatal                                      ● Fatal  
 ⊕ Serious Injury                          ● Serious Injury

The blue gradient represents the density of all speed-related crashes.

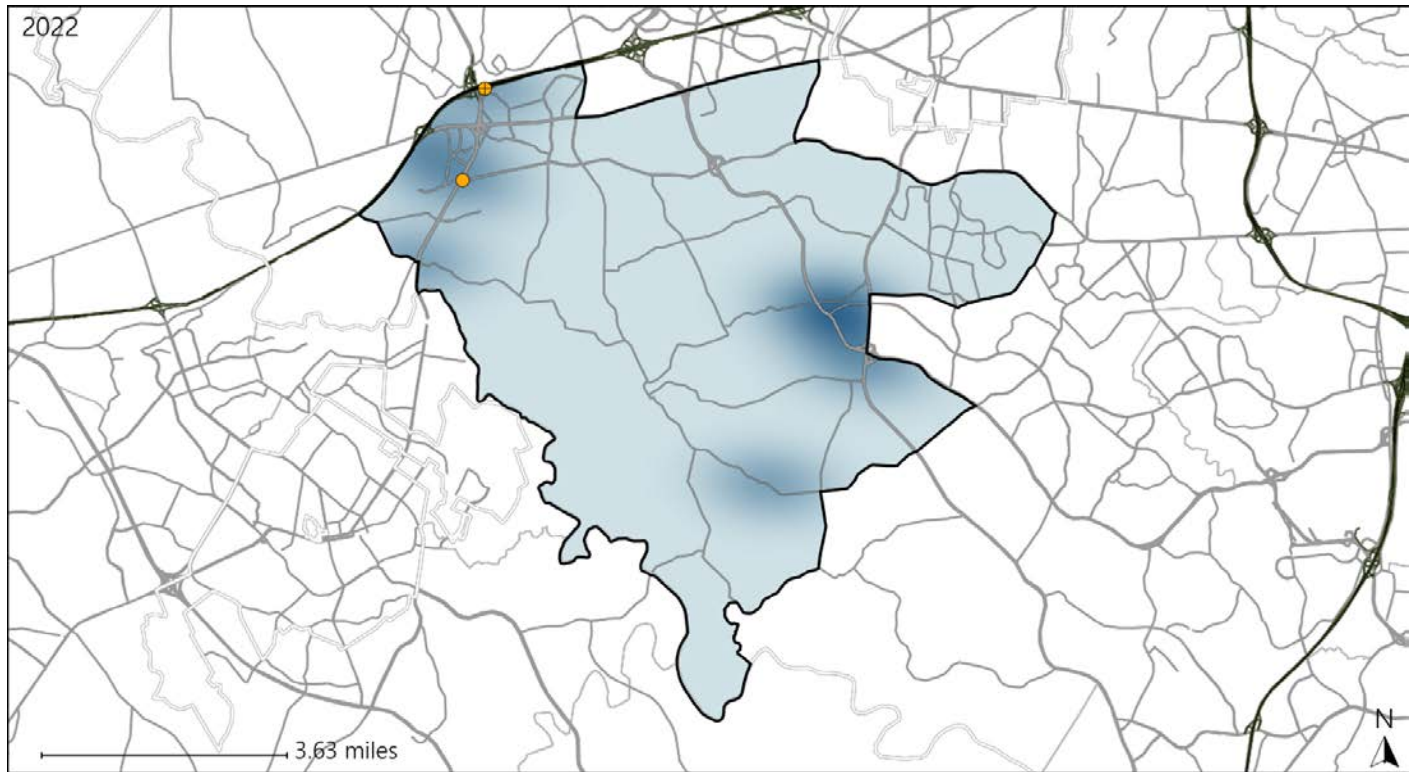


Available Crash Data - Calendar Year (CY)	CY 2019	CY 2020	CY 2021	CY 2022
Total Crashes	1063	716	798	988
Fatal Crashes	3	2	2	3
Injury Crashes	309	186	215	248
Speed-Related Fatal Crashes	2	0	2	0
Percent of Speed-Related Fatal Crashes to Total Fatal Crashes	67%	0%	100%	0%
Speed-Related Injury Crashes	52	33	40	38
Percent of Speed-Related Injury Crashes to Total Injury Crashes	17%	18%	19%	15%

# Virginia House District 10 Unrestrained Crash Statistics

Report Generated May, 2023

	Count	Highest Time Period(s)	Highest Day(s)	Highest Month(s)
<b>Fatal Crashes</b>	<b>0</b>	-	-	-
<b>Unrestrained Fatalities</b>	<b>0</b>	-	-	-
<b>Serious Injury Crashes</b>	<b>2</b>	3:00pm - 5:59pm Midnight - 2:59am (100%)	Monday • Wednesday (100%)	April • February (100%)



### House District 10 Unrestrained-Related Crashes

- |                    |                        |
|--------------------|------------------------|
| Interstate Crashes | Non-interstate Crashes |
| ● Fatal            | ● Fatal                |
| ⊕ Serious Injury   | ● Serious Injury       |

The blue gradient represents the density of all unrestrained-related crashes.



Available Crash Data - Calendar Year (CY)	CY 2019	CY 2020	CY 2021	CY 2022
<b>Total Crashes</b>	<b>1063</b>	<b>716</b>	<b>798</b>	<b>988</b>
<b>Fatalities</b>	<b>3</b>	<b>2</b>	<b>2</b>	<b>3</b>
<b>Injuries</b>	<b>461</b>	<b>290</b>	<b>340</b>	<b>369</b>
<b>Unrestrained Fatalities</b>	<b>0</b>	<b>0</b>	<b>0</b>	<b>0</b>
<b>Percent of Unrestrained Fatalities to Total Fatalities</b>	<b>0%</b>	<b>0%</b>	<b>0%</b>	<b>0%</b>
<b>Unrestrained Injuries</b>	<b>15</b>	<b>6</b>	<b>6</b>	<b>10</b>
<b>Percent of Unrestrained Injuries to Total Injuries</b>	<b>3%</b>	<b>2%</b>	<b>2%</b>	<b>3%</b>

# Virginia House District 10 Pedestrian Crash Statistics

Report Generated May, 2023

	Count	Highest Time Period(s)	Highest Day(s)	Highest Month(s)
<b>Fatal Crashes</b>	<b>2</b>	<b>9:00pm - 11:59pm</b>	<b>Monday • Saturday</b>	<b>January • November</b>
<b>Pedestrian Fatalities</b>	<b>2</b>	(100%)	(100%)	(100%)
<b>Serious Injury Crashes</b>	<b>4</b>	<b>3:00pm - 5:59pm</b>	<b>Friday • Monday</b>	<b>April • March</b>
		(50%)	(50%)	(50%)



### House District 10 Pedestrian-Related Crashes

- |                    |                        |
|--------------------|------------------------|
| Interstate Crashes | Non-interstate Crashes |
| Fatal              | Fatal                  |
| Serious Injury     | Serious Injury         |

The blue gradient represents the density of all pedestrian-related crashes.



Available Crash Data - Calendar Year (CY)	CY 2019	CY 2020	CY 2021	CY 2022
Total Crashes	1063	716	798	988
Fatal Crashes	3	2	2	3
Injury Crashes	309	186	215	248
Pedestrian-Related Fatal Crashes	0	2	0	2
Percent of Pedestrian-Related Fatal Crashes to Total Fatal Crashes	0%	100%	0%	67%
Pedestrian-Related Injury Crashes	12	9	5	12
Percent of Pedestrian-Related Injury Crashes to Total Injury Crashes	4%	5%	2%	5%

# Virginia House District 10 Distracted Driving Crash Statistics

Report Generated May, 2023

	Count	Highest Time Period(s)	Highest Day(s)	Highest Month(s)
<b>Fatal Crashes</b>	0	-	-	-
<b>Resulting Fatalities</b>	0	-	-	-
<b>Serious Injury Crashes</b>	3	9:00pm - 11:59pm (67%)	Saturday • Sunday (66%)	April • August (66%)



## House District 10 Distracted Driving-Related Crashes

- |                    |                        |
|--------------------|------------------------|
| Interstate Crashes | Non-interstate Crashes |
| ● Fatal            | ● Fatal                |
| ● Serious Injury   | ● Serious Injury       |

The blue gradient represents the density of all distracted driving-related crashes.



Available Crash Data - Calendar Year (CY)	CY 2019	CY 2020	CY 2021	CY 2022
Total Crashes	1063	716	798	988
Fatal Crashes	3	2	2	3
Injury Crashes	309	186	215	248
Distracted Driving-Related Fatal Crashes	1	0	0	0
Percent of Distracted Driving-Related Fatal Crashes to Total Fatal Crashes	33%	0%	0%	0%
Distracted Driving-Related Injury Crashes	69	30	34	42
Percent of Distracted Driving-Related Injury Crashes to Total Injury Crashes	22%	16%	16%	17%