

# Virginia House District 11 Crash Statistics

Report Generated May, 2023

	Count	Highest Time Period(s)	Highest Day(s)	Highest Month(s)
<b>Fatal Crashes</b>	<b>6</b>	3:00am - 5:59am	Monday • Saturday	August • December
<b>Resulting Fatalities</b>	<b>7</b>	3:00pm - 5:59pm (34%)	(34%)	(34%)
<b>Serious Injury Crashes</b>	<b>19</b>	3:00pm - 5:59pm (32%)	Sunday • Wednesday (42%)	May • November (32%)



### House District 11 Crashes

Interstate Crashes

- Fatal
- Serious Injury

Non-interstate Crashes

- Fatal
- Serious Injury

The blue gradient represents the density of all crashes.

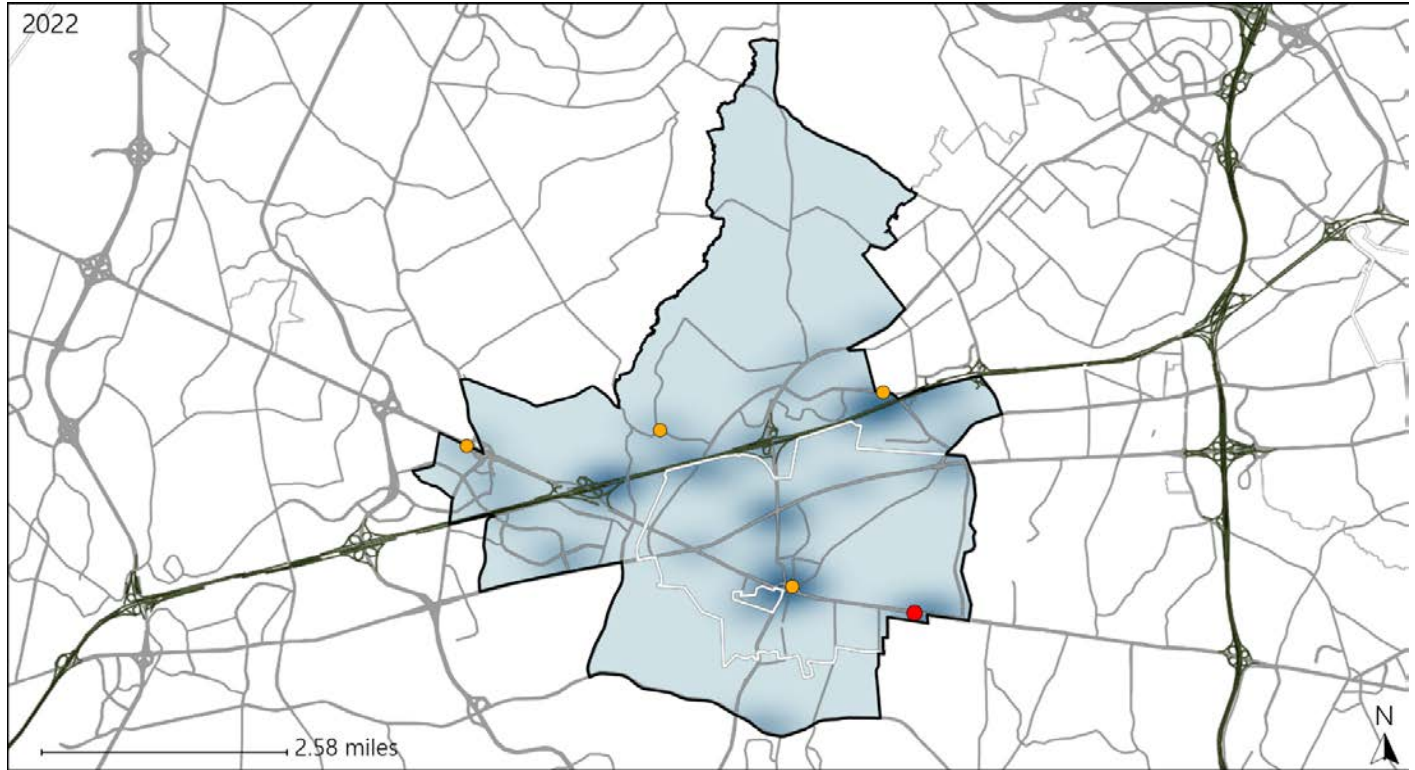


Available Crash Data - Calendar Year (CY)	CY 2019	CY 2020	CY 2021	CY 2022
Total Crashes	1290	872	1080	1069
Fatal Crashes	2	2	3	6
Injury Crashes	285	185	202	220

# Virginia House District 11 Alcohol Crash Statistics

Report Generated May, 2023

	Count	Highest Time Period(s)	Highest Day(s)	Highest Month(s)
<b>Fatal Crashes</b>	<b>1</b>	<b>6:00pm - 8:59pm</b>	<b>Saturday</b>	<b>November</b>
<b>Resulting Fatalities</b>	<b>1</b>	<b>(100%)</b>	<b>(100%)</b>	<b>(100%)</b>
<b>Serious Injury Crashes</b>	<b>4</b>	<b>9:00pm - 11:59pm</b>	<b>Sunday</b>	<b>June</b>
		<b>(50%)</b>	<b>(75%)</b>	<b>(50%)</b>



### House District 11 Alcohol-Related Crashes

Interstate Crashes                      Non-interstate Crashes  
 ● Fatal                                      ● Fatal  
 ● Serious Injury                          ● Serious Injury

The blue gradient represents the density of all alcohol-related crashes.

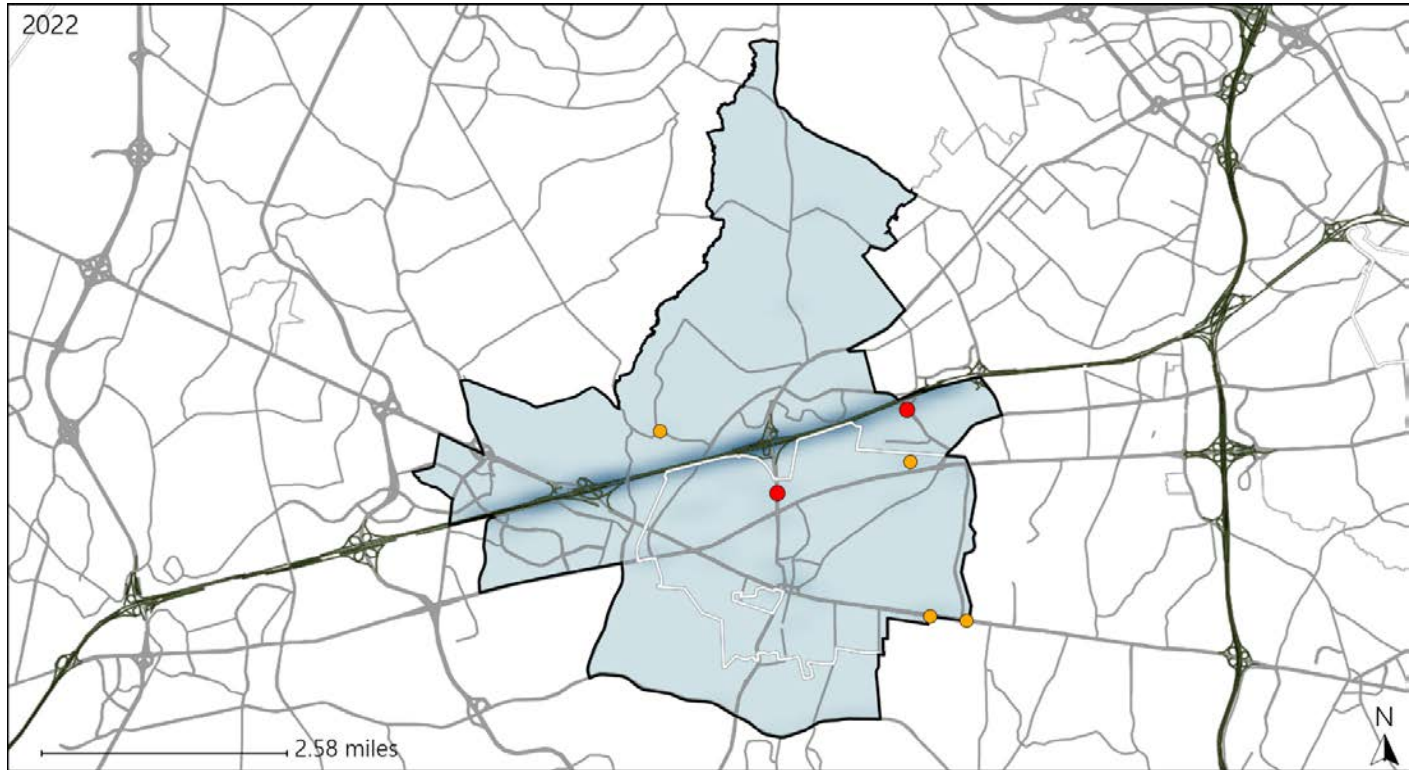


Available Crash Data - Calendar Year (CY)	CY 2019	CY 2020	CY 2021	CY 2022
Total Crashes	1290	872	1080	1069
Fatal Crashes	2	2	3	6
Injury Crashes	285	185	202	220
Alcohol-Related Fatal Crashes	0	0	0	1
Percent of Alcohol-Related Fatal Crashes to Total Fatal Crashes	0%	0%	0%	17%
Alcohol-Related Injury Crashes	10	14	10	21
Percent of Alcohol-Related Injury Crashes to Total Injury Crashes	4%	8%	5%	10%

# Virginia House District 11 Speed Crash Statistics

Report Generated May, 2023

	Count	Highest Time Period(s)	Highest Day(s)	Highest Month(s)
<b>Fatal Crashes</b>	<b>2</b>	<b>3:00pm - 5:59pm</b>	<b>Monday + Tuesday</b>	<b>August + June</b>
<b>Resulting Fatalities</b>	<b>3</b>	<b>9:00am - 11:59am</b> (100%)	<b>(100%)</b>	<b>(100%)</b>
<b>Serious Injury Crashes</b>	<b>4</b>	<b>6:00pm - 8:59pm</b> (50%)	<b>Sunday</b> (50%)	<b>April + March</b> (50%)



## House District 11 Speed-Related Crashes

Interstate Crashes                      Non-interstate Crashes  
 ● Fatal                                      ● Fatal  
 ⊕ Serious Injury                          ⊕ Serious Injury

The blue gradient represents the density of all speed-related crashes.

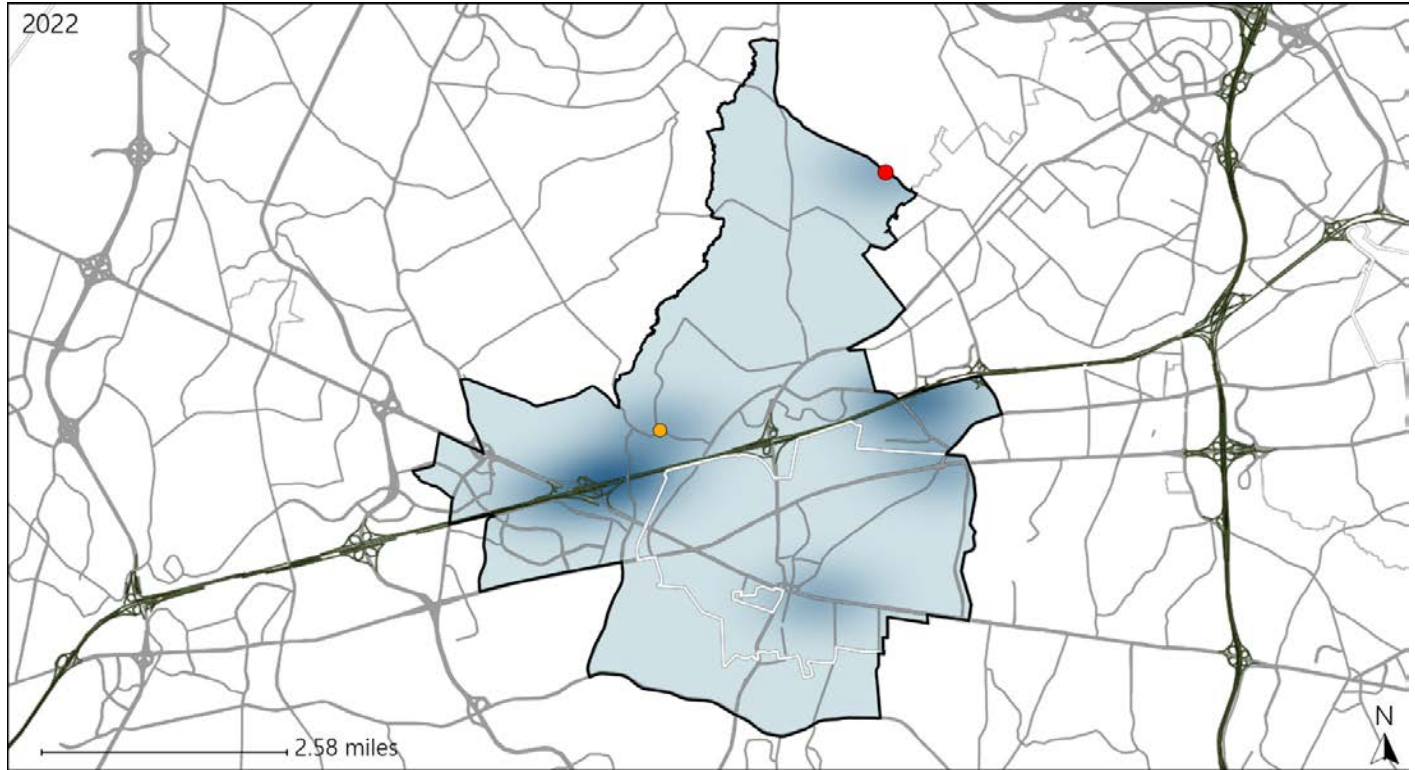


Available Crash Data - Calendar Year (CY)	CY 2019	CY 2020	CY 2021	CY 2022
Total Crashes	1290	872	1080	1069
Fatal Crashes	2	2	3	6
Injury Crashes	285	185	202	220
Speed-Related Fatal Crashes	1	1	1	2
Percent of Speed-Related Fatal Crashes to Total Fatal Crashes	50%	50%	33%	33%
Speed-Related Injury Crashes	70	55	57	47
Percent of Speed-Related Injury Crashes to Total Injury Crashes	25%	30%	28%	21%

# Virginia House District 11 Unrestrained Crash Statistics

Report Generated May, 2023

	Count	Highest Time Period(s)	Highest Day(s)	Highest Month(s)
<b>Fatal Crashes</b>	<b>1</b>	<b>Noon - 2:59pm</b>	<b>Wednesday</b>	<b>March</b>
<b>Unrestrained Fatalities</b>	<b>1</b>	<b>(100%)</b>	<b>(100%)</b>	<b>(100%)</b>
<b>Serious Injury Crashes</b>	<b>1</b>	<b>6:00pm - 8:59pm</b>	<b>Sunday</b>	<b>April</b>
		<b>(100%)</b>	<b>(100%)</b>	<b>(100%)</b>



## House District 11 Unrestrained-Related Crashes

Interstate Crashes

- Fatal
- Serious Injury

Non-interstate Crashes

- Fatal
- Serious Injury

The blue gradient represents the density of all unrestrained-related crashes.

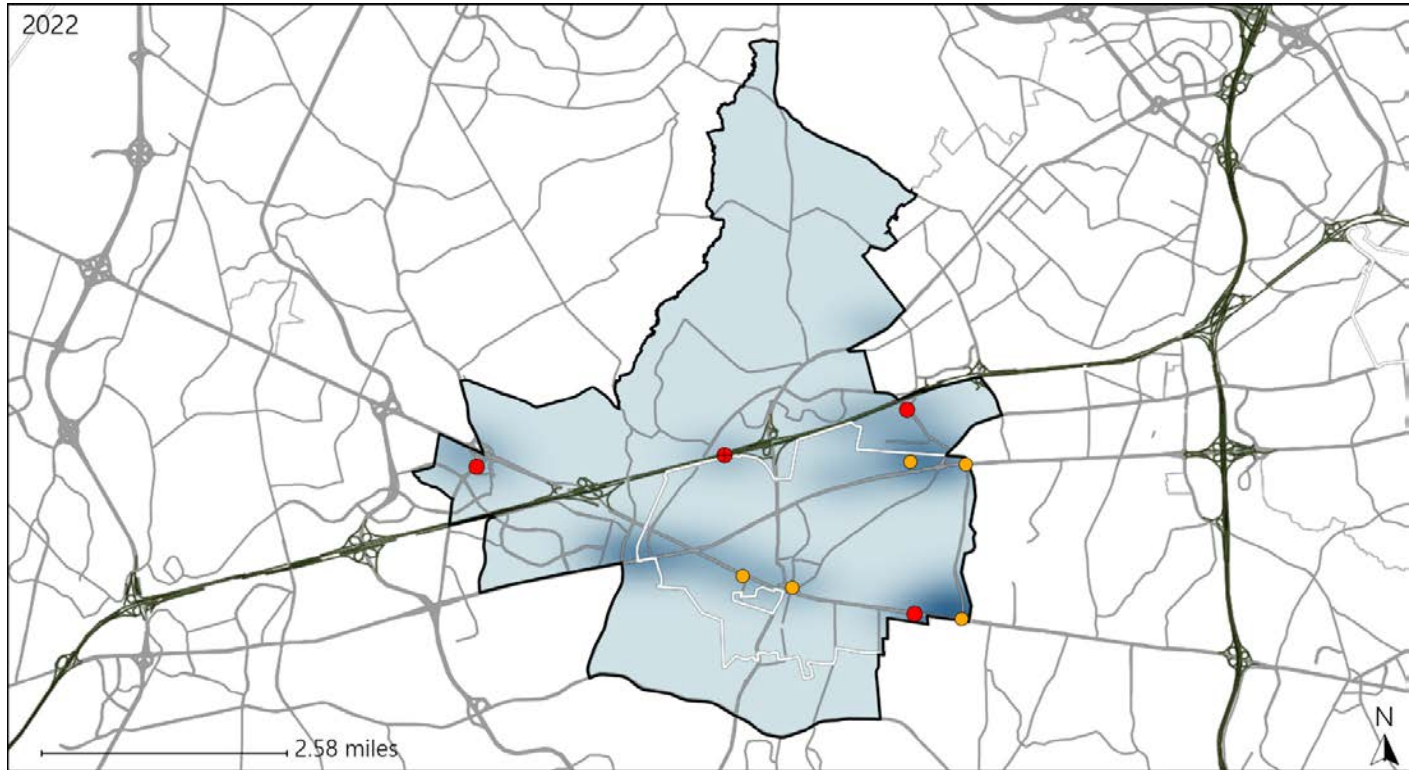


Available Crash Data - Calendar Year (CY)	CY 2019	CY 2020	CY 2021	CY 2022
<b>Total Crashes</b>	<b>1290</b>	<b>872</b>	<b>1080</b>	<b>1069</b>
<b>Fatalities</b>	<b>2</b>	<b>2</b>	<b>3</b>	<b>7</b>
<b>Injuries</b>	<b>420</b>	<b>266</b>	<b>300</b>	<b>331</b>
<b>Unrestrained Fatalities</b>	<b>0</b>	<b>0</b>	<b>0</b>	<b>1</b>
<b>Percent of Unrestrained Fatalities to Total Fatalities</b>	<b>0%</b>	<b>0%</b>	<b>0%</b>	<b>14%</b>
<b>Unrestrained Injuries</b>	<b>9</b>	<b>9</b>	<b>11</b>	<b>9</b>
<b>Percent of Unrestrained Injuries to Total Injuries</b>	<b>2%</b>	<b>3%</b>	<b>4%</b>	<b>3%</b>

# Virginia House District 11 Pedestrian Crash Statistics

Report Generated May, 2023

	Count	Highest Time Period(s)	Highest Day(s)	Highest Month(s)
<b>Fatal Crashes</b>	<b>4</b>	<b>3:00am - 5:59am</b>	<b>Saturday • Sunday</b>	<b>December • June</b>
<b>Pedestrian Fatalities</b>	<b>5</b>	<b>6:00pm - 8:59pm</b> (50%)	<b>(50%)</b>	<b>(50%)</b>
<b>Serious Injury Crashes</b>	<b>5</b>	<b>Noon - 2:59pm</b> (40%)	<b>Monday • Tuesday</b> (80%)	<b>January • July</b> (40%)



## House District 11 Pedestrian-Related Crashes

Interstate Crashes

Non-interstate Crashes

● Fatal

● Fatal

● Serious Injury

● Serious Injury

The blue gradient represents the density of all pedestrian-related crashes.



Available Crash Data - Calendar Year (CY)	CY 2019	CY 2020	CY 2021	CY 2022
Total Crashes	1290	872	1080	1069
Fatal Crashes	2	2	3	6
Injury Crashes	285	185	202	220
Pedestrian-Related Fatal Crashes	1	1	2	4
Percent of Pedestrian-Related Fatal Crashes to Total Fatal Crashes	50%	50%	67%	67%
Pedestrian-Related Injury Crashes	11	8	12	18
Percent of Pedestrian-Related Injury Crashes to Total Injury Crashes	4%	4%	6%	8%

# Virginia House District 11 Distracted Driving Crash Statistics

Report Generated May, 2023

	Count	Highest Time Period(s)	Highest Day(s)	Highest Month(s)
<b>Fatal Crashes</b>	0	-	-	-
<b>Resulting Fatalities</b>	0	-	-	-
<b>Serious Injury Crashes</b>	5	3:00pm - 5:59pm (40%)	Wednesday (40%)	May (40%)



## House District 11 Distracted Driving-Related Crashes

- |  |  |
|--|--|
| Interstate Crashes   | Non-interstate Crashes   |
|  Fatal          |  Fatal          |
|  Serious Injury |  Serious Injury |

The blue gradient represents the density of all distracted driving-related crashes.



Available Crash Data - Calendar Year (CY)	CY 2019	CY 2020	CY 2021	CY 2022
Total Crashes	1290	872	1080	1069
Fatal Crashes	2	2	3	6
Injury Crashes	285	185	202	220
Distracted Driving-Related Fatal Crashes	0	1	1	0
Percent of Distracted Driving-Related Fatal Crashes to Total Fatal Crashes	0%	50%	33%	0%
Distracted Driving-Related Injury Crashes	61	35	32	44
Percent of Distracted Driving-Related Injury Crashes to Total Injury Crashes	21%	19%	16%	20%