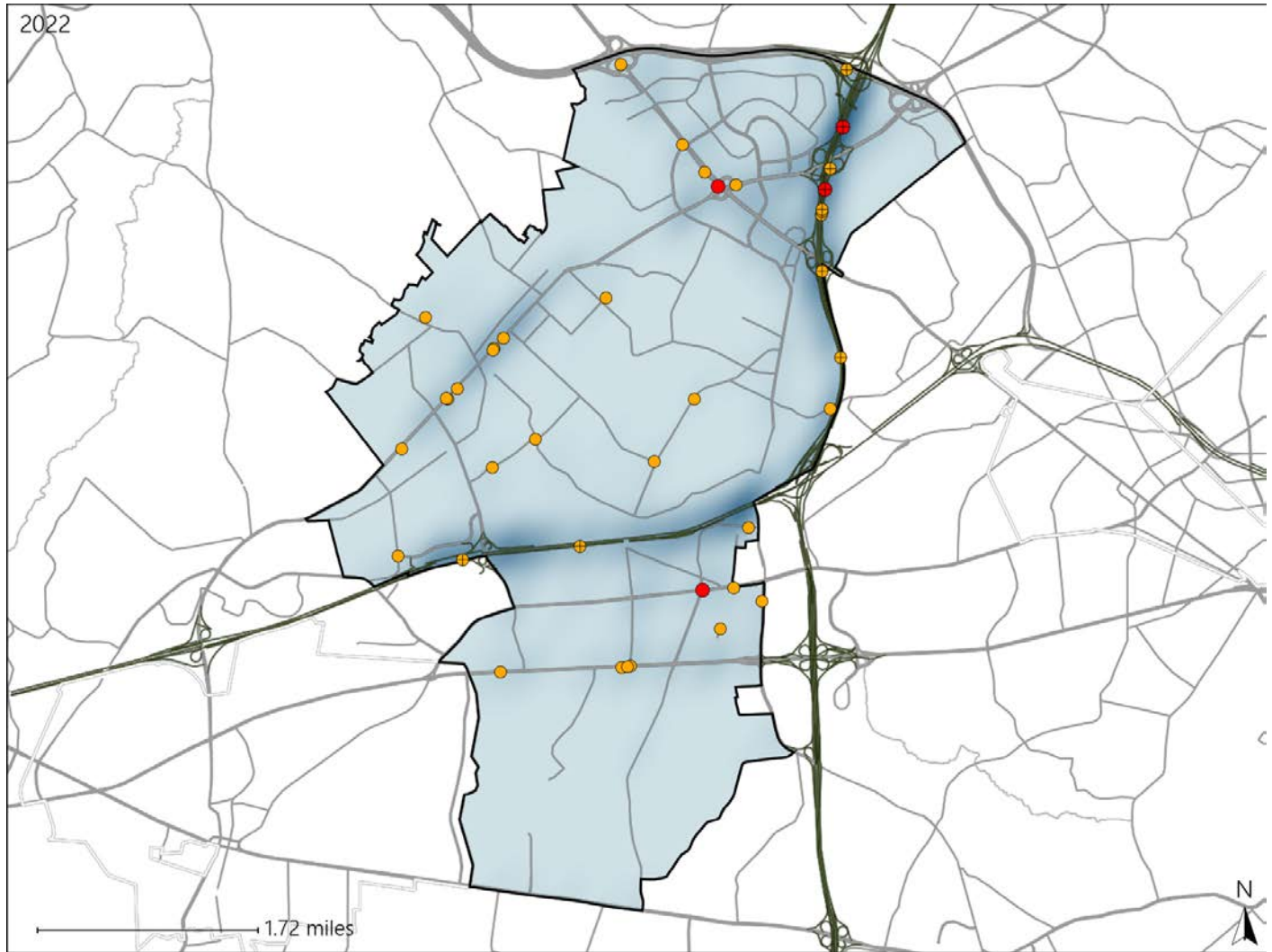


Virginia House District 12 Crash Statistics

Report Generated May, 2023

	Count	Highest Time Period(s)	Highest Day(s)	Highest Month(s)
Fatal Crashes	4	6:00am - 8:59am	Thursday • Tuesday	December
Resulting Fatalities	7	(50%)	(100%)	(50%)
Serious Injury Crashes	36	6:00pm - 8:59pm	Wednesday	July
		(28%)	(22%)	(19%)



House District 12 Crashes

Interstate Crashes

- Fatal
- Serious Injury

Non-interstate Crashes

- Fatal
- Serious Injury

The blue gradient represents the density of all crashes.

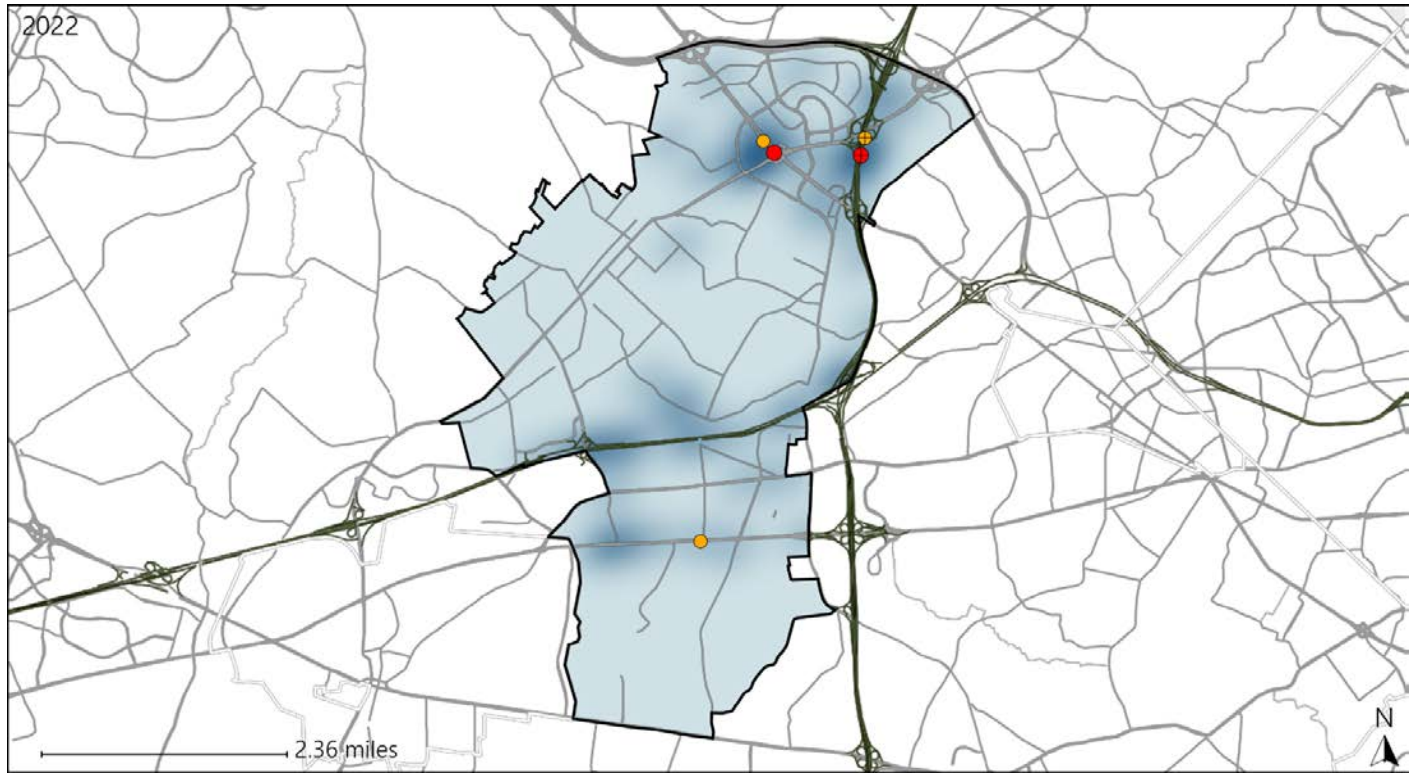


Available Crash Data - Calendar Year (CY)	CY 2019	CY 2020	CY 2021	CY 2022
Total Crashes	1598	900	1056	1257
Fatal Crashes	4	0	4	4
Injury Crashes	439	236	286	303

Virginia House District 12 Alcohol Crash Statistics

Report Generated May, 2023

	Count	Highest Time Period(s)	Highest Day(s)	Highest Month(s)
Fatal Crashes	2	3:00am - 5:59am	Thursday • Tuesday	May • October
Resulting Fatalities	5	9:00pm - 11:59pm (100%)	(100%)	(100%)
Serious Injury Crashes	3	3:00am - 5:59am	Saturday	December • July
		9:00pm - 11:59pm (66%)	(67%)	(66%)



House District 12 Alcohol-Related Crashes

Interstate Crashes Non-interstate Crashes
 ● Fatal ● Fatal
 ⊕ Serious Injury ⊕ Serious Injury

The blue gradient represents the density of all alcohol-related crashes.

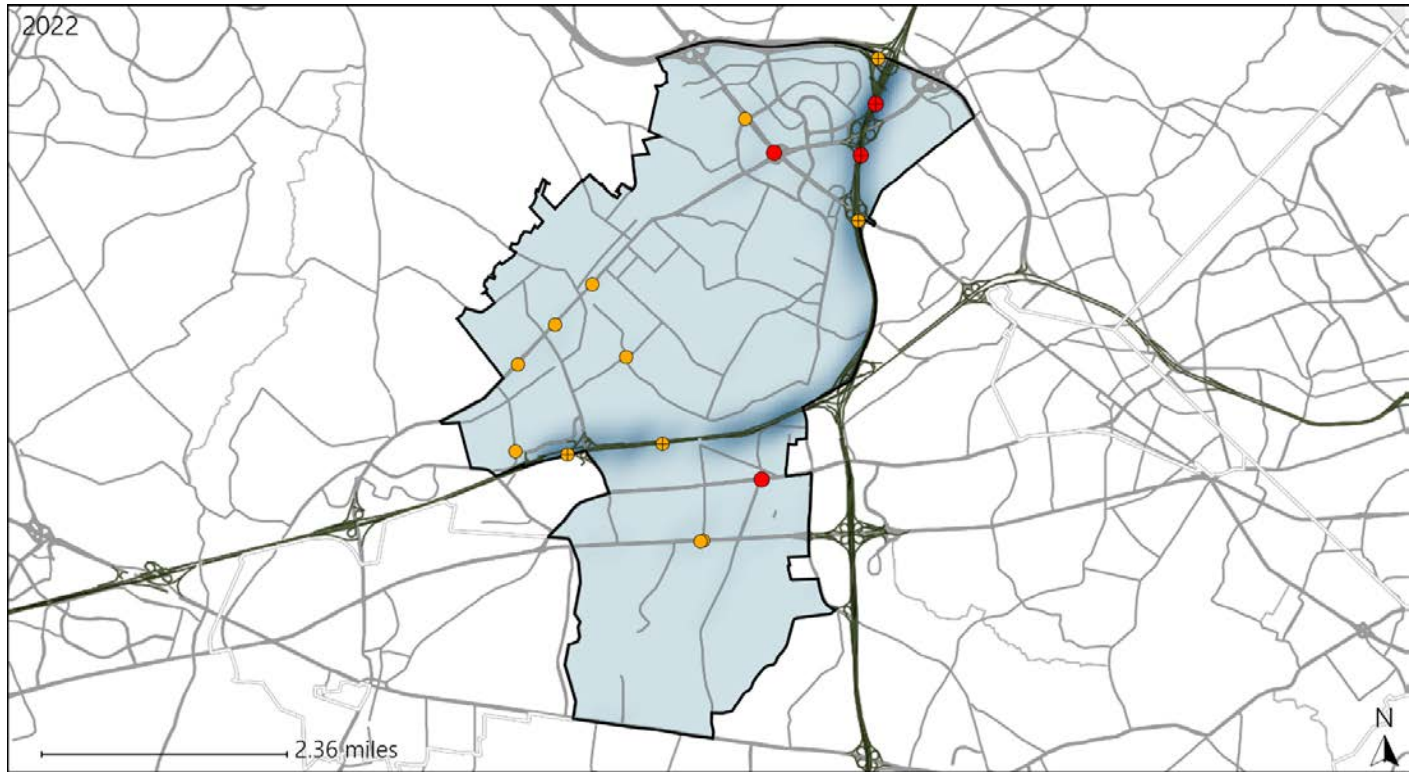


Available Crash Data - Calendar Year (CY)	CY 2019	CY 2020	CY 2021	CY 2022
Total Crashes	1598	900	1056	1257
Fatal Crashes	4	0	4	4
Injury Crashes	439	236	286	303
Alcohol-Related Fatal Crashes	0	0	1	2
Percent of Alcohol-Related Fatal Crashes to Total Fatal Crashes	0%	0%	25%	50%
Alcohol-Related Injury Crashes	10	14	14	22
Percent of Alcohol-Related Injury Crashes to Total Injury Crashes	2%	6%	5%	7%

Virginia House District 12 Speed Crash Statistics

Report Generated May, 2023

	Count	Highest Time Period(s)	Highest Day(s)	Highest Month(s)
Fatal Crashes	4	6:00am - 8:59am	Thursday • Tuesday	December
Resulting Fatalities	7	(50%)	(100%)	(50%)
Serious Injury Crashes	12	6:00pm - 8:59pm	Saturday • Sunday	April
		(42%)	(50%)	(25%)



House District 12 Speed-Related Crashes

Interstate Crashes Non-interstate Crashes
 ● Fatal ● Fatal
 ⊕ Serious Injury ⊕ Serious Injury
 The blue gradient represents the density of all speed-related crashes.

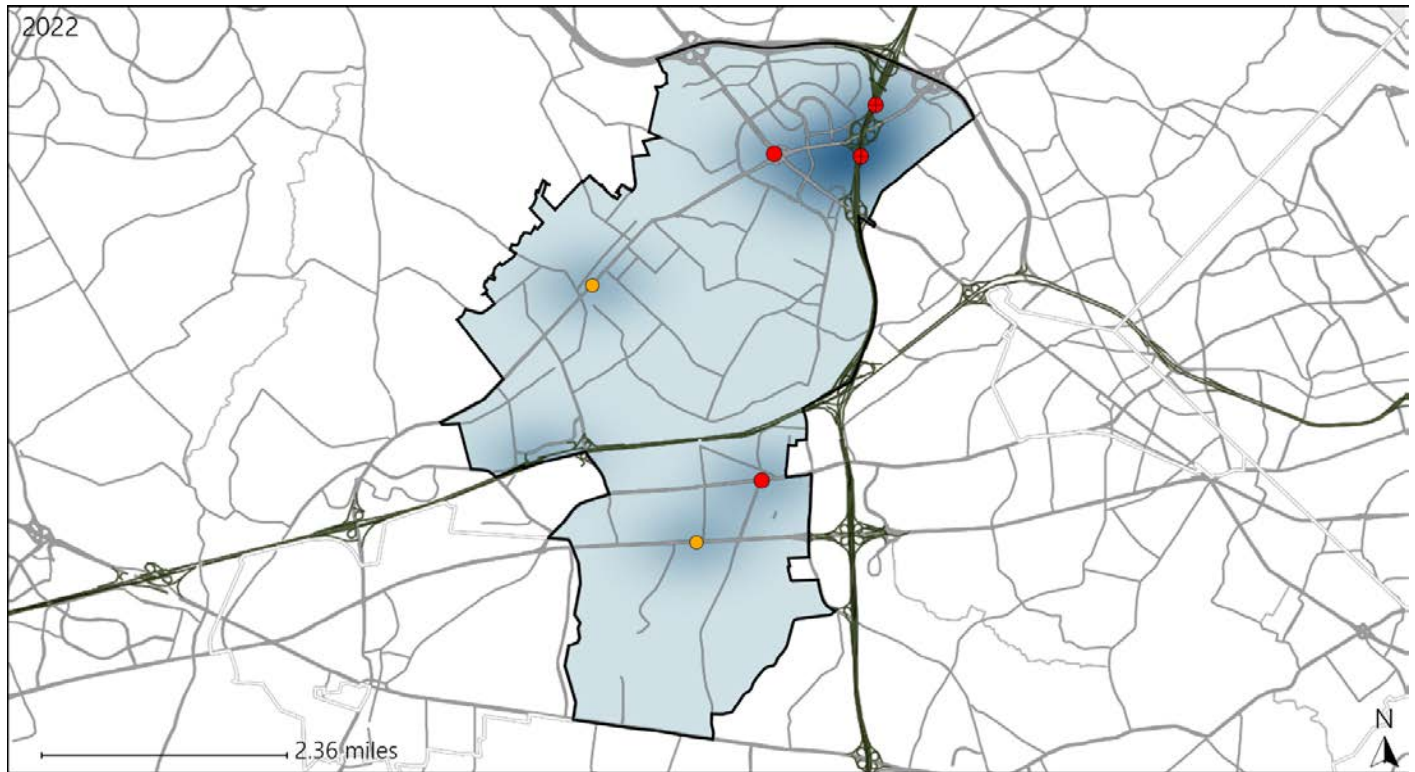


Available Crash Data - Calendar Year (CY)	CY 2019	CY 2020	CY 2021	CY 2022
Total Crashes	1598	900	1056	1257
Fatal Crashes	4	0	4	4
Injury Crashes	439	236	286	303
Speed-Related Fatal Crashes	1	0	1	4
Percent of Speed-Related Fatal Crashes to Total Fatal Crashes	25%	0%	25%	100%
Speed-Related Injury Crashes	107	69	91	75
Percent of Speed-Related Injury Crashes to Total Injury Crashes	24%	29%	32%	25%

Virginia House District 12 Unrestrained Crash Statistics

Report Generated May, 2023

	Count	Highest Time Period(s)	Highest Day(s)	Highest Month(s)
Fatal Crashes	4	6:00am - 8:59am	Thursday • Tuesday	December
Unrestrained Fatalities	7	(50%)	(100%)	(50%)
Serious Injury Crashes	2	9:00pm - 11:59pm Midnight - 2:59am	Tuesday • Wednesday	April • February
		(100%)	(100%)	(100%)



House District 12 Unrestrained-Related Crashes

- | | |
|--------------------|------------------------|
| Interstate Crashes | Non-interstate Crashes |
| ● Fatal | ● Fatal |
| ⊕ Serious Injury | ● Serious Injury |

The blue gradient represents the density of all unrestrained-related crashes.

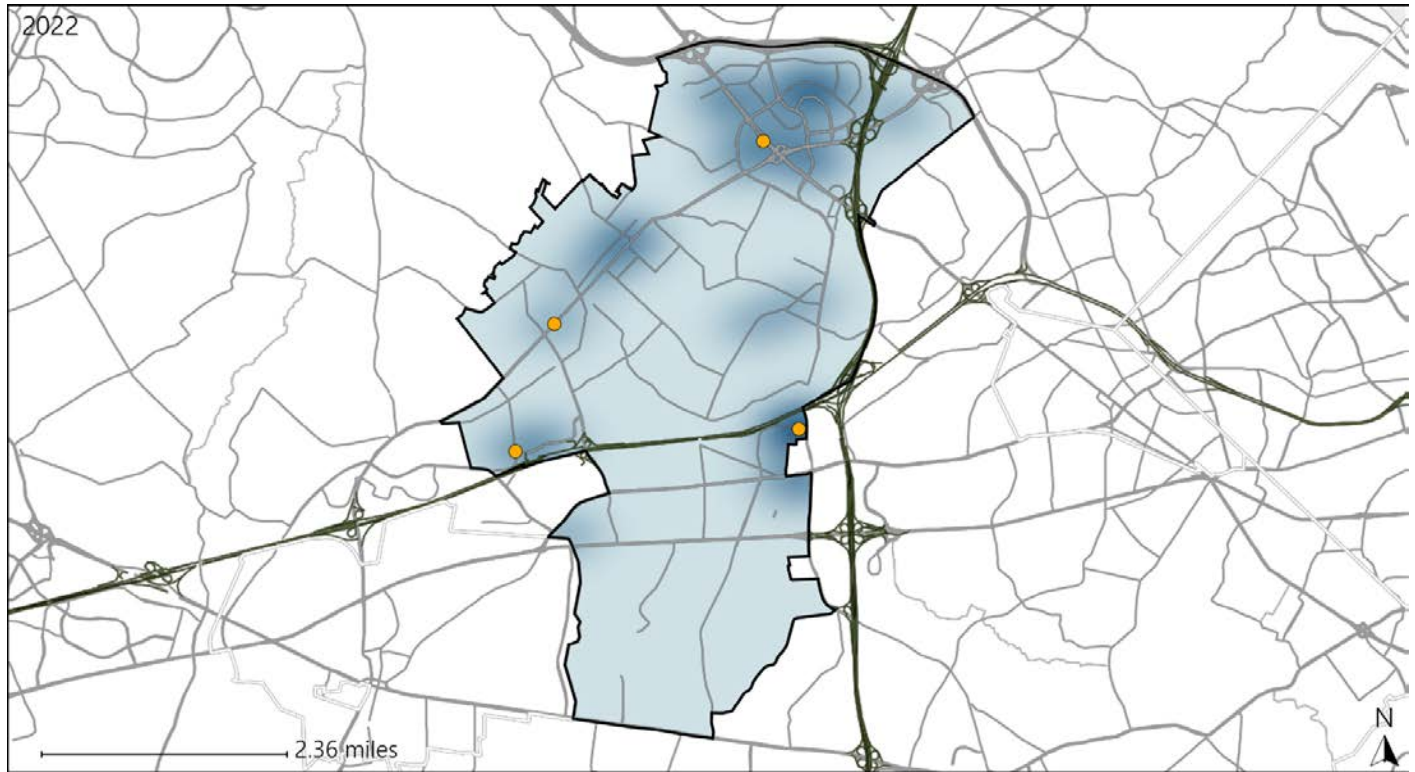


Available Crash Data - Calendar Year (CY)	CY 2019	CY 2020	CY 2021	CY 2022
Total Crashes	1598	900	1056	1257
Fatalities	4	0	6	7
Injuries	654	339	415	467
Unrestrained Fatalities	0	0	1	7
Percent of Unrestrained Fatalities to Total Fatalities	0%	0%	17%	100%
Unrestrained Injuries	7	6	9	7
Percent of Unrestrained Injuries to Total Injuries	1%	2%	2%	1%

Virginia House District 12 Pedestrian Crash Statistics

Report Generated May, 2023

	Count	Highest Time Period(s)	Highest Day(s)	Highest Month(s)
Fatal Crashes	0	-	-	-
Pedestrian Fatalities	0	-	-	-
Serious Injury Crashes	4	6:00am - 8:59am (50%)	Monday - Saturday (50%)	August - December (50%)



House District 12 Pedestrian-Related Crashes

Interstate Crashes

Non-interstate Crashes

- Fatal
- Serious Injury

- Fatal
- Serious Injury

The blue gradient represents the density of all pedestrian-related crashes.

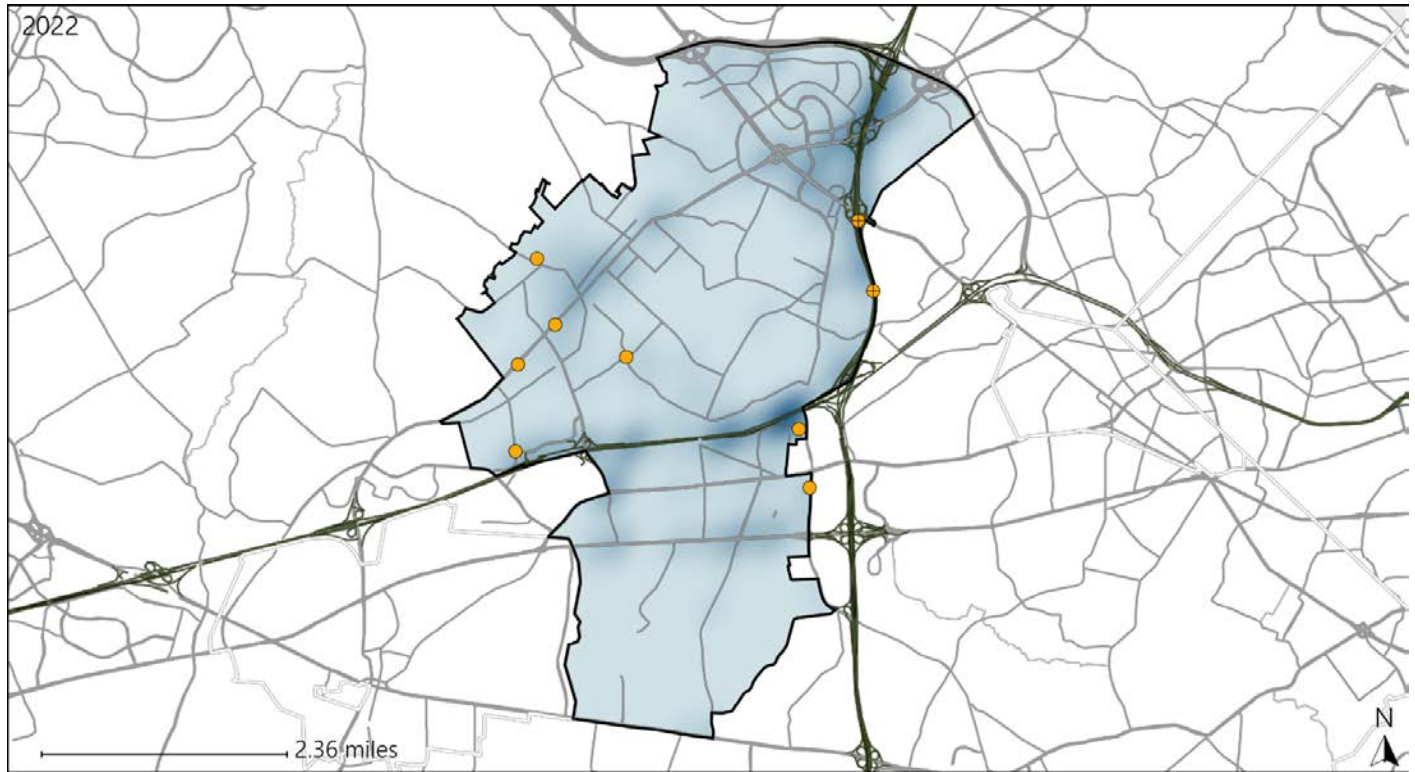


Available Crash Data - Calendar Year (CY)	CY 2019	CY 2020	CY 2021	CY 2022
Total Crashes	1598	900	1056	1257
Fatal Crashes	4	0	4	4
Injury Crashes	439	236	286	303
Pedestrian-Related Fatal Crashes	2	0	2	0
Percent of Pedestrian-Related Fatal Crashes to Total Fatal Crashes	50%	0%	50%	0%
Pedestrian-Related Injury Crashes	15	17	15	24
Percent of Pedestrian-Related Injury Crashes to Total Injury Crashes	3%	7%	5%	8%

Virginia House District 12 Distracted Driving Crash Statistics

Report Generated May, 2023

	Count	Highest Time Period(s)	Highest Day(s)	Highest Month(s)
Fatal Crashes	0	-	-	-
Resulting Fatalities	0	-	-	-
Serious Injury Crashes	9	6:00pm - 8:59pm (44%)	Thursday (33%)	August (22%)



House District 12 Distracted Driving-Related Crashes

- | | |
|--------------------|------------------------|
| Interstate Crashes | Non-interstate Crashes |
| Fatal | Fatal |
| Serious Injury | Serious Injury |

The blue gradient represents the density of all distracted driving-related crashes.



Available Crash Data - Calendar Year (CY)	CY 2019	CY 2020	CY 2021	CY 2022
Total Crashes	1598	900	1056	1257
Fatal Crashes	4	0	4	4
Injury Crashes	439	236	286	303
Distracted Driving-Related Fatal Crashes	0	0	1	0
Percent of Distracted Driving-Related Fatal Crashes to Total Fatal Crashes	0%	0%	25%	0%
Distracted Driving-Related Injury Crashes	91	50	51	57
Percent of Distracted Driving-Related Injury Crashes to Total Injury Crashes	21%	21%	18%	19%