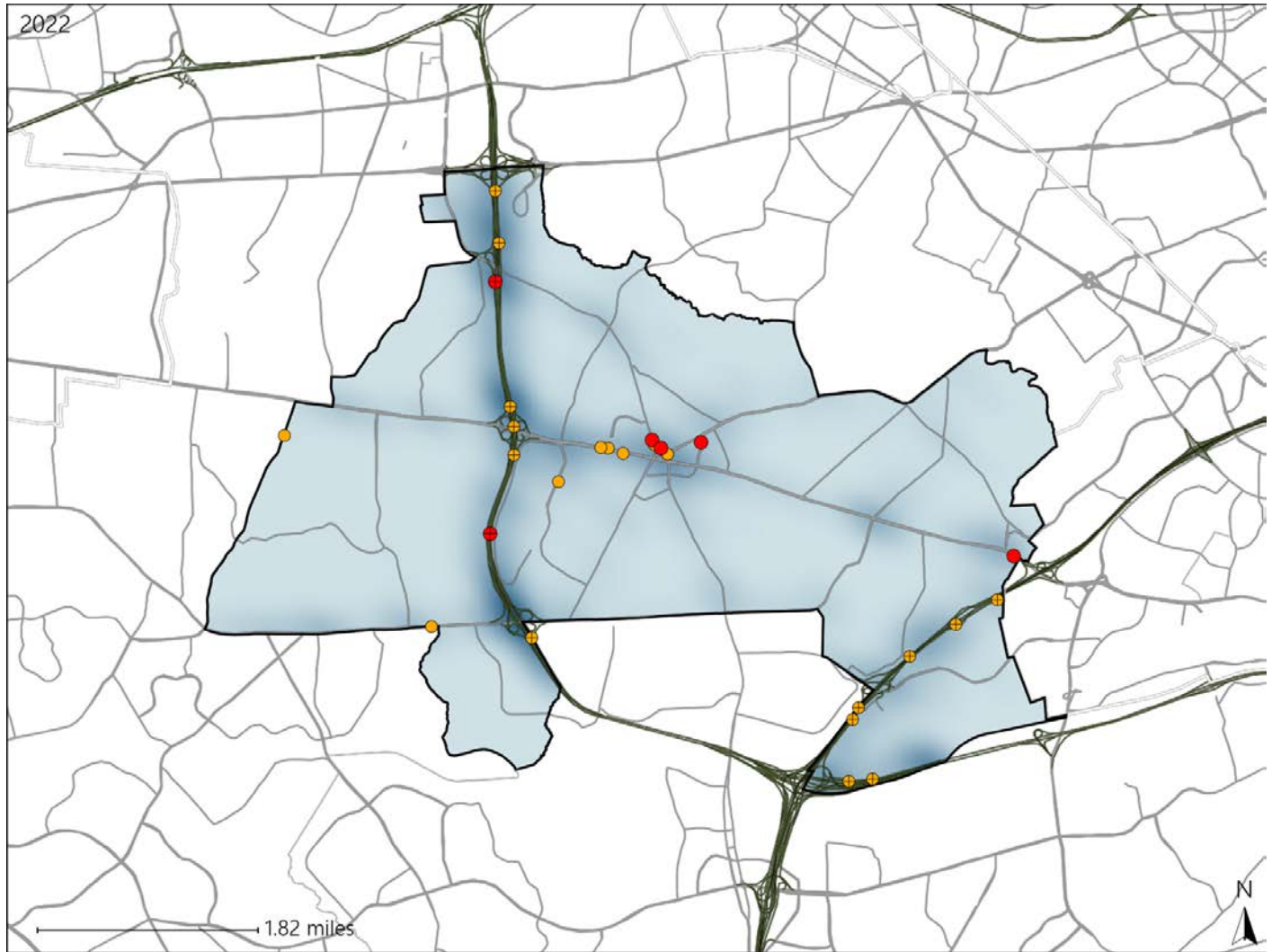


Virginia House District 14 Crash Statistics

Report Generated May, 2023

	Count	Highest Time Period(s)	Highest Day(s)	Highest Month(s)
Fatal Crashes	6	6:00pm - 8:59pm	Friday • Sunday	May
Resulting Fatalities	6	(50%)	(66%)	(33%)
Serious Injury Crashes	21	9:00pm - 11:59pm	Saturday	April • August
		(24%)	(29%)	(28%)



House District 14 Crashes

Interstate Crashes

- Fatal
- Serious Injury

Non-interstate Crashes

- Fatal
- Serious Injury

The blue gradient represents the density of all crashes.

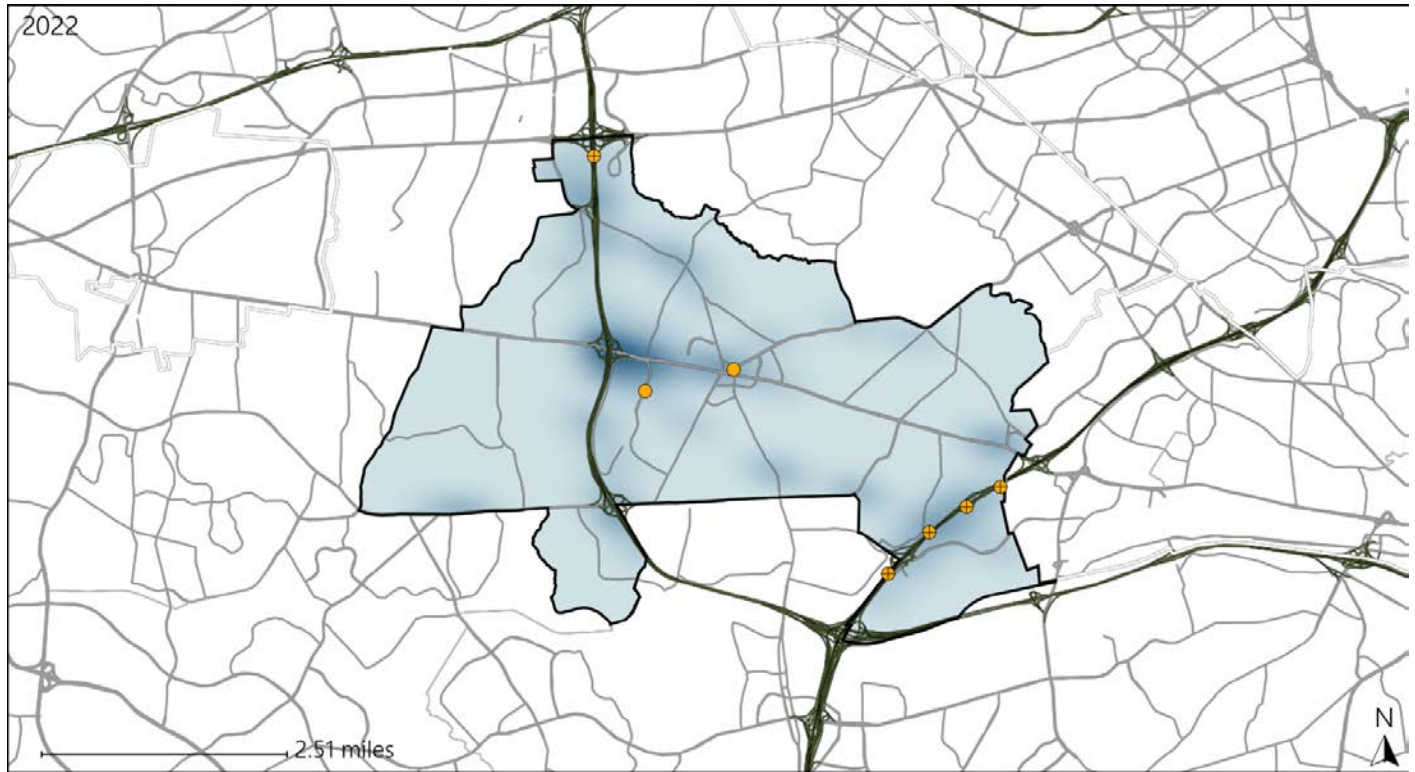


Available Crash Data - Calendar Year (CY)	CY 2019	CY 2020	CY 2021	CY 2022
Total Crashes	1412	928	909	1067
Fatal Crashes	4	4	4	6
Injury Crashes	415	283	272	283

Virginia House District 14 Alcohol Crash Statistics

Report Generated May, 2023

	Count	Highest Time Period(s)	Highest Day(s)	Highest Month(s)
Fatal Crashes	0	-	-	-
Resulting Fatalities	0	-	-	-
Serious Injury Crashes	7	Midnight - 2:59am (43%)	Friday (43%)	September (29%)



House District 14 Alcohol-Related Crashes

Interstate Crashes Non-interstate Crashes
 ● Fatal ● Fatal
 ⊕ Serious Injury ⊕ Serious Injury

The blue gradient represents the density of all alcohol-related crashes.

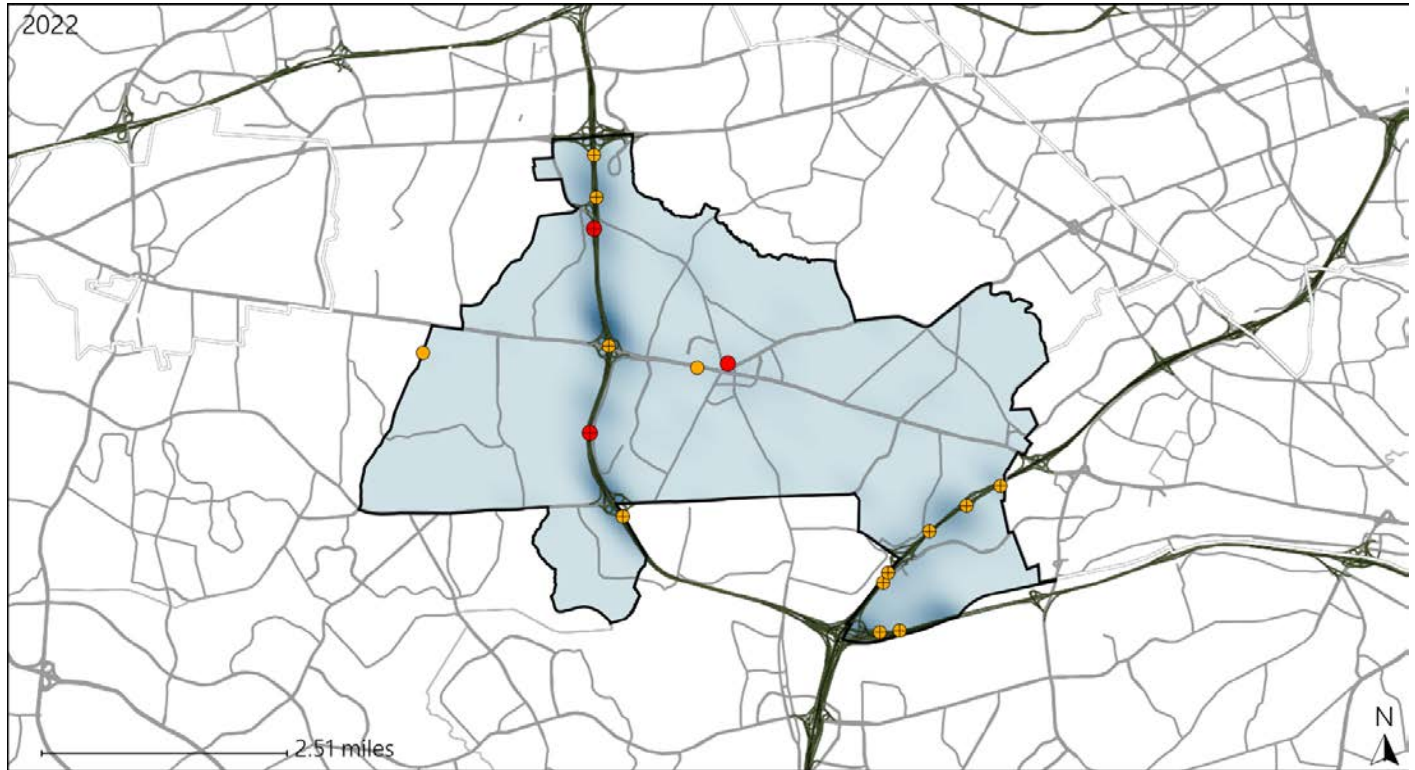


Available Crash Data - Calendar Year (CY)	CY 2019	CY 2020	CY 2021	CY 2022
Total Crashes	1412	928	909	1067
Fatal Crashes	4	4	4	6
Injury Crashes	415	283	272	283
Alcohol-Related Fatal Crashes	1	3	2	0
Percent of Alcohol-Related Fatal Crashes to Total Fatal Crashes	25%	75%	50%	0%
Alcohol-Related Injury Crashes	27	25	15	25
Percent of Alcohol-Related Injury Crashes to Total Injury Crashes	7%	9%	6%	9%

Virginia House District 14 Speed Crash Statistics

Report Generated May, 2023

	Count	Highest Time Period(s)	Highest Day(s)	Highest Month(s)
Fatal Crashes	3	6:00pm - 8:59pm	Friday	May • November
Resulting Fatalities	3	9:00am - 11:59am (66%)	(67%)	(66%)
Serious Injury Crashes	13	6:00pm - 8:59pm (23%)	Saturday (38%)	April (23%)



House District 14 Speed-Related Crashes

Interstate Crashes Non-interstate Crashes
 ● Fatal ● Fatal
 ⊕ Serious Injury ⊕ Serious Injury

The blue gradient represents the density of all speed-related crashes.

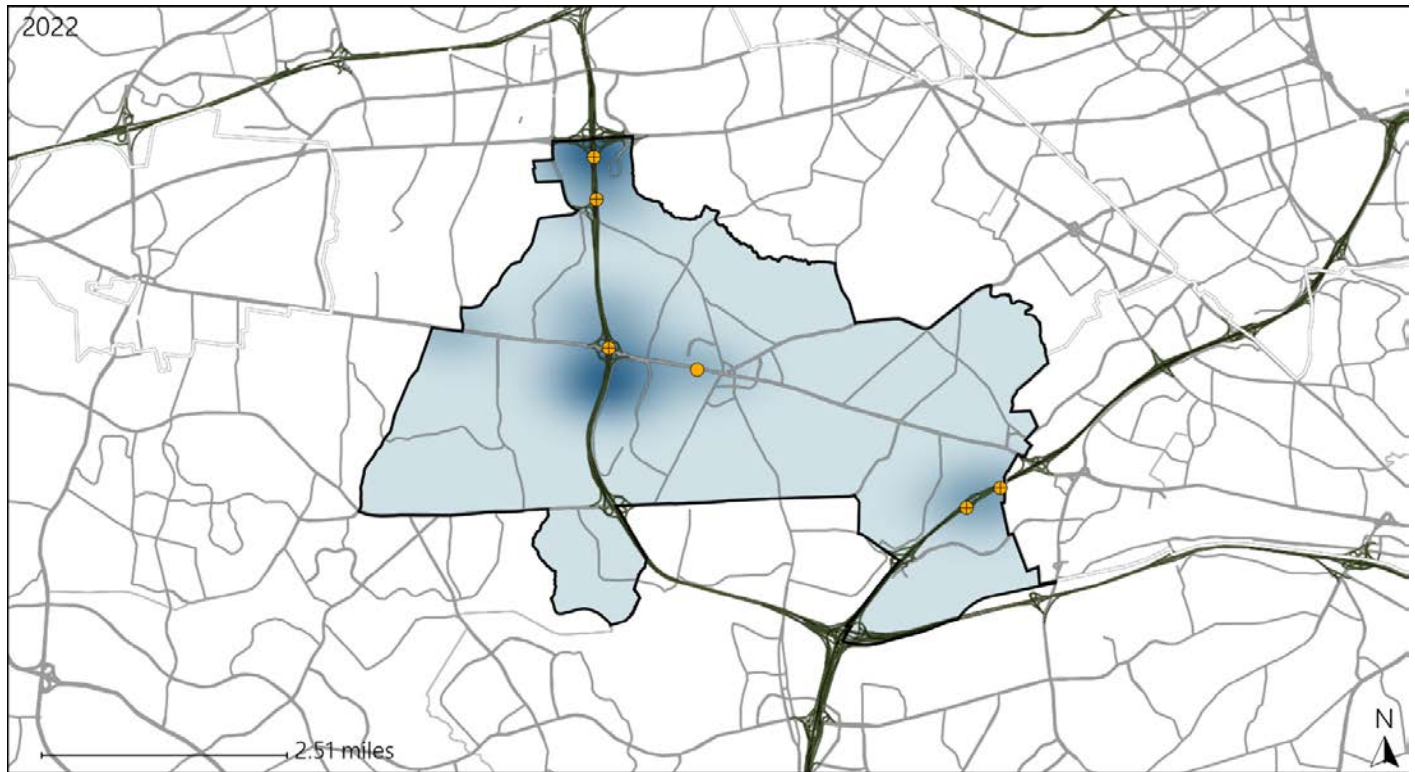


Available Crash Data - Calendar Year (CY)	CY 2019	CY 2020	CY 2021	CY 2022
Total Crashes	1412	928	909	1067
Fatal Crashes	4	4	4	6
Injury Crashes	415	283	272	283
Speed-Related Fatal Crashes	1	2	1	3
Percent of Speed-Related Fatal Crashes to Total Fatal Crashes	25%	50%	25%	50%
Speed-Related Injury Crashes	129	89	106	106
Percent of Speed-Related Injury Crashes to Total Injury Crashes	31%	31%	39%	37%

Virginia House District 14 Unrestrained Crash Statistics

Report Generated May, 2023

	Count	Highest Time Period(s)	Highest Day(s)	Highest Month(s)
Fatal Crashes	0	-	-	-
Unrestrained Fatalities	0	-	-	-
Serious Injury Crashes	6	6:00am - 8:59am 9:00pm - 11:59pm (66%)	Saturday • Wednesday (66%)	May (33%)



House District 14 Unrestrained-Related Crashes

- | | |
|--------------------|------------------------|
| Interstate Crashes | Non-interstate Crashes |
| ● Fatal | ● Fatal |
| ⊕ Serious Injury | ⊕ Serious Injury |

The blue gradient represents the density of all unrestrained-related crashes.

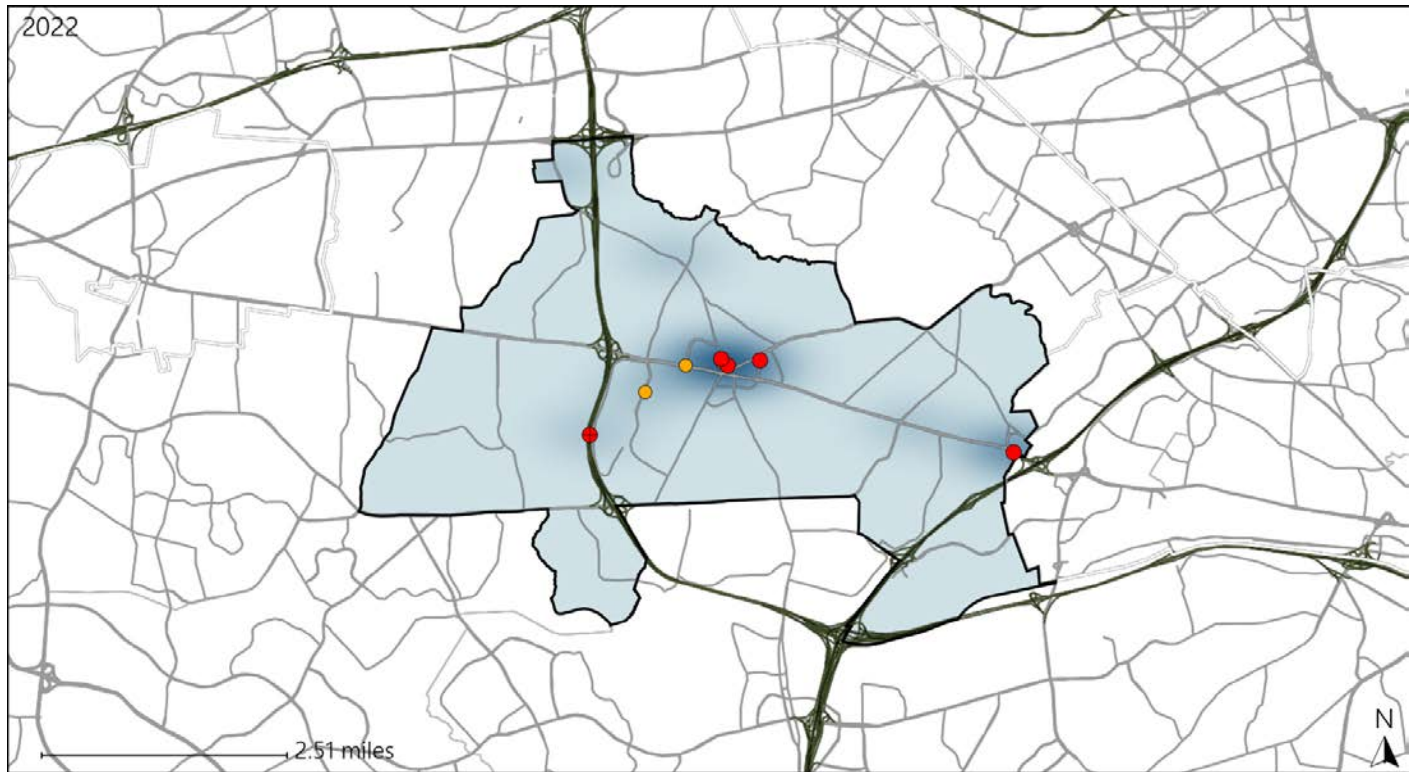


Available Crash Data - Calendar Year (CY)	CY 2019	CY 2020	CY 2021	CY 2022
Total Crashes	1412	928	909	1067
Fatalities	4	4	4	6
Injuries	629	406	412	441
Unrestrained Fatalities	0	1	1	0
Percent of Unrestrained Fatalities to Total Fatalities	0%	25%	25%	0%
Unrestrained Injuries	18	13	11	15
Percent of Unrestrained Injuries to Total Injuries	3%	3%	3%	3%

Virginia House District 14 Pedestrian Crash Statistics

Report Generated May, 2023

	Count	Highest Time Period(s)	Highest Day(s)	Highest Month(s)
Fatal Crashes	5	6:00pm - 8:59pm	Sunday	May
Pedestrian Fatalities	5	(60%)	(40%)	(40%)
Serious Injury Crashes	3	6:00am - 8:59am 6:00pm - 8:59pm	Tuesday	December • October
		(66%)	(67%)	(66%)



House District 14 Pedestrian-Related Crashes

Interstate Crashes

Non-interstate Crashes

- Fatal
- Serious Injury

- Fatal
- Serious Injury

The blue gradient represents the density of all pedestrian-related crashes.

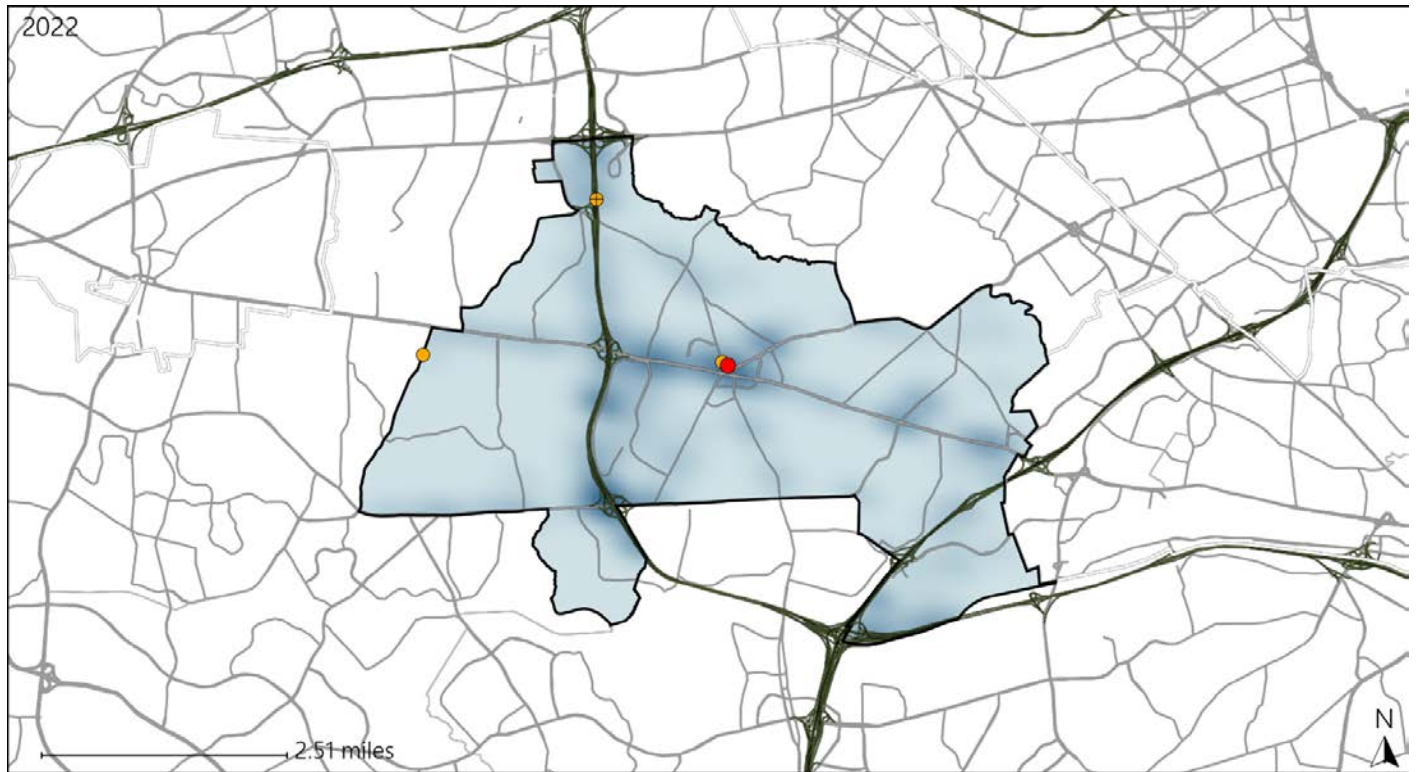


Available Crash Data - Calendar Year (CY)	CY 2019	CY 2020	CY 2021	CY 2022
Total Crashes	1412	928	909	1067
Fatal Crashes	4	4	4	6
Injury Crashes	415	283	272	283
Pedestrian-Related Fatal Crashes	1	2	2	5
Percent of Pedestrian-Related Fatal Crashes to Total Fatal Crashes	25%	50%	50%	83%
Pedestrian-Related Injury Crashes	26	11	11	9
Percent of Pedestrian-Related Injury Crashes to Total Injury Crashes	6%	4%	4%	3%

Virginia House District 14 Distracted Driving Crash Statistics

Report Generated May, 2023

	Count	Highest Time Period(s)	Highest Day(s)	Highest Month(s)
Fatal Crashes	1	9:00am - 11:59am	Friday	May
Resulting Fatalities	1	(100%)	(100%)	(100%)
Serious Injury Crashes	3	3:00am - 5:59am 6:00am - 8:59am	Monday	May • November
		(66%)	(67%)	(66%)



House District 14 Distracted Driving-Related Crashes

- | | |
|--|--|
| Interstate Crashes | Non-interstate Crashes |
| ● Fatal | ● Fatal |
| ● Serious Injury | ● Serious Injury |

The blue gradient represents the density of all distracted driving-related crashes.



Available Crash Data - Calendar Year (CY)	CY 2019	CY 2020	CY 2021	CY 2022
Total Crashes	1412	928	909	1067
Fatal Crashes	4	4	4	6
Injury Crashes	415	283	272	283
Distracted Driving-Related Fatal Crashes	1	1	0	1
Percent of Distracted Driving-Related Fatal Crashes to Total Fatal Crashes	25%	25%	0%	17%
Distracted Driving-Related Injury Crashes	84	62	55	63
Percent of Distracted Driving-Related Injury Crashes to Total Injury Crashes	20%	22%	20%	22%