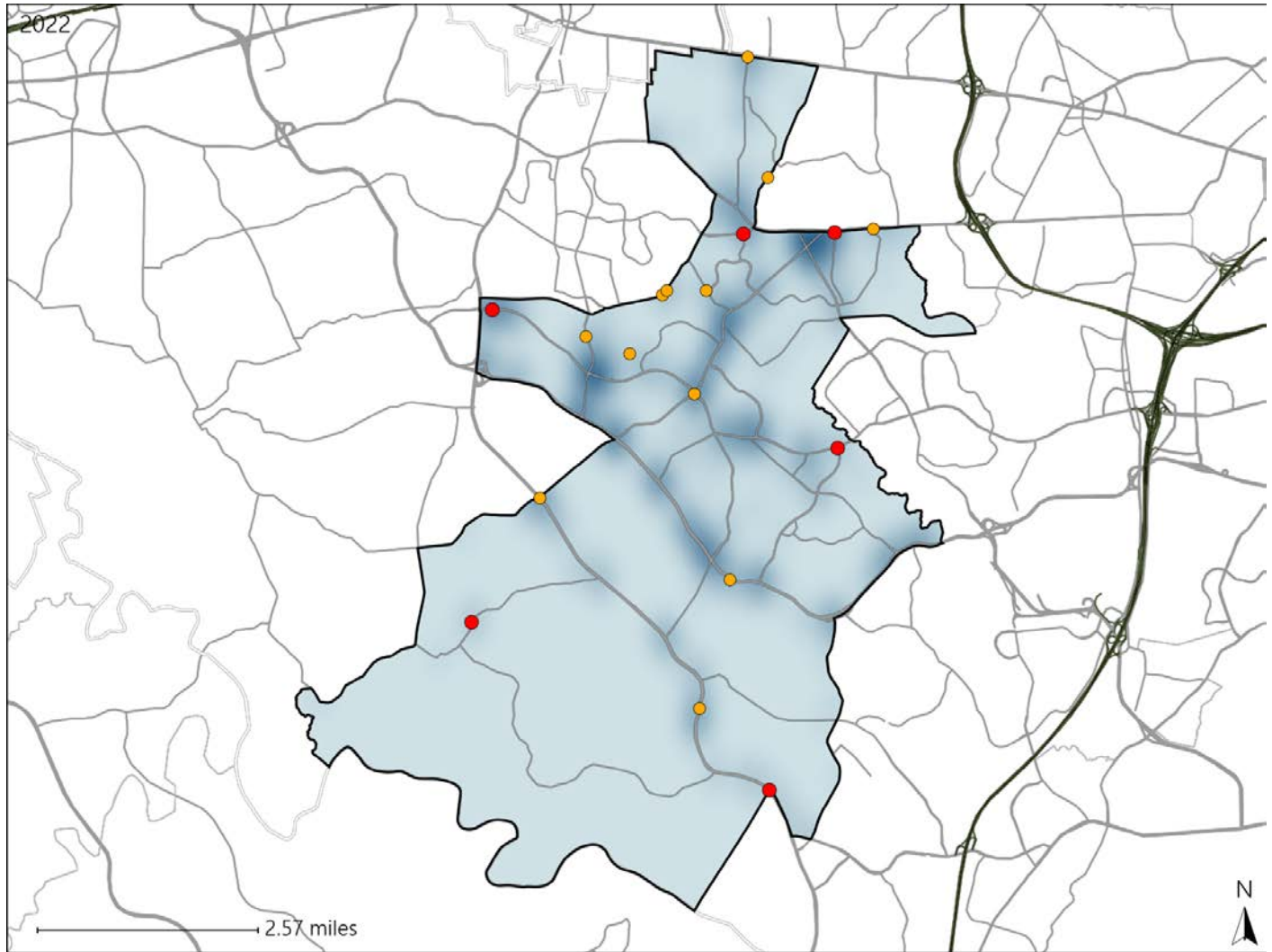


Virginia House District 15 Crash Statistics

Report Generated May, 2023

	Count	Highest Time Period(s)	Highest Day(s)	Highest Month(s)
Fatal Crashes	6	6:00pm - 8:59pm	Wednesday	November
Resulting Fatalities	6	(50%)	(33%)	(50%)
Serious Injury Crashes	12	3:00pm - 5:59pm	Saturday	August + July
		(25%)	(33%)	(34%)



House District 15 Crashes

Interstate Crashes

- Fatal
- Serious Injury

Non-interstate Crashes

- Fatal
- Serious Injury

The blue gradient represents the density of all crashes.

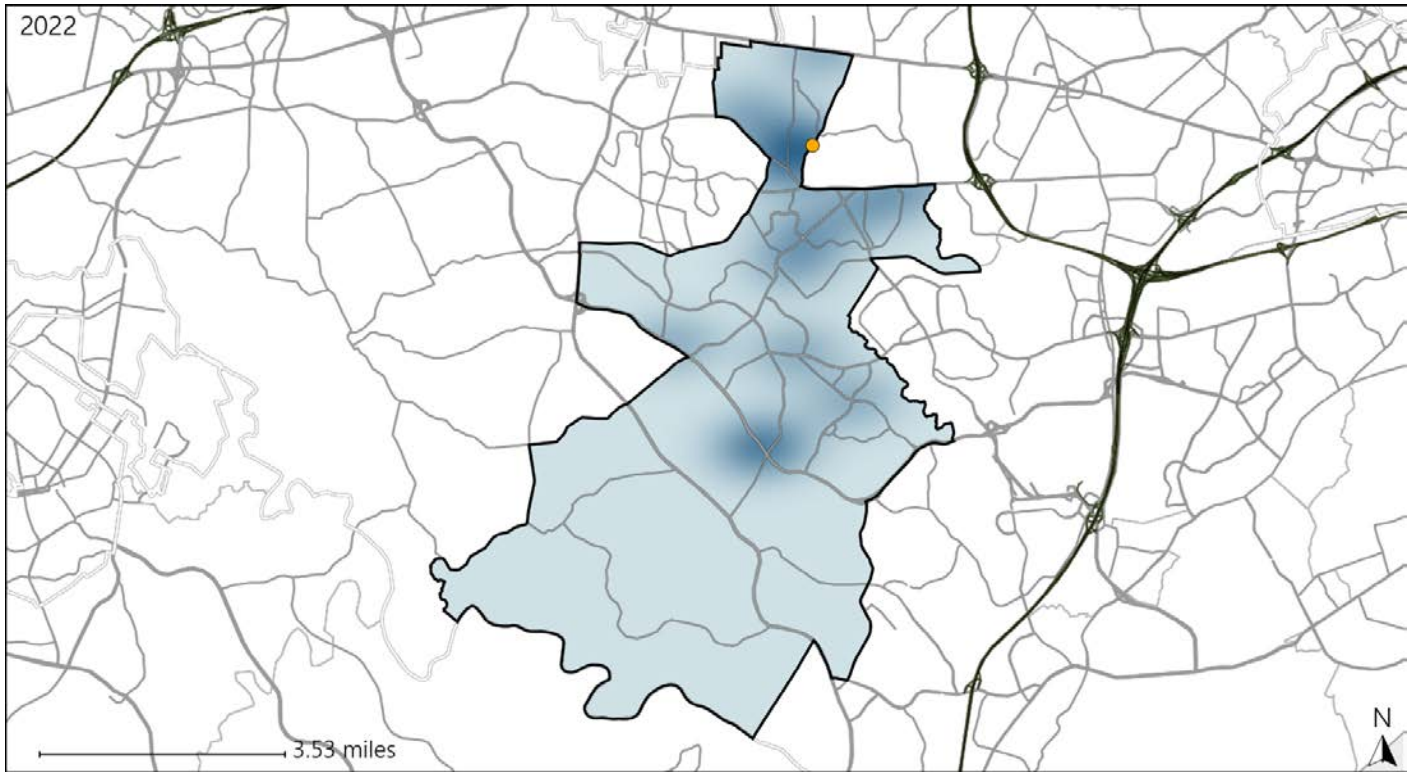


Available Crash Data - Calendar Year (CY)	CY 2019	CY 2020	CY 2021	CY 2022
Total Crashes	454	292	376	418
Fatal Crashes	1	1	3	6
Injury Crashes	132	72	129	122

Virginia House District 15 Alcohol Crash Statistics

Report Generated May, 2023

	Count	Highest Time Period(s)	Highest Day(s)	Highest Month(s)
Fatal Crashes	0	-	-	-
Resulting Fatalities	0	-	-	-
Serious Injury Crashes	1	3:00am - 5:59am (100%)	Wednesday (100%)	October (100%)



House District 15 Alcohol-Related Crashes

Interstate Crashes

Non-interstate Crashes

- Fatal
- Serious Injury

- Fatal
- Serious Injury

The blue gradient represents the density of all alcohol-related crashes.

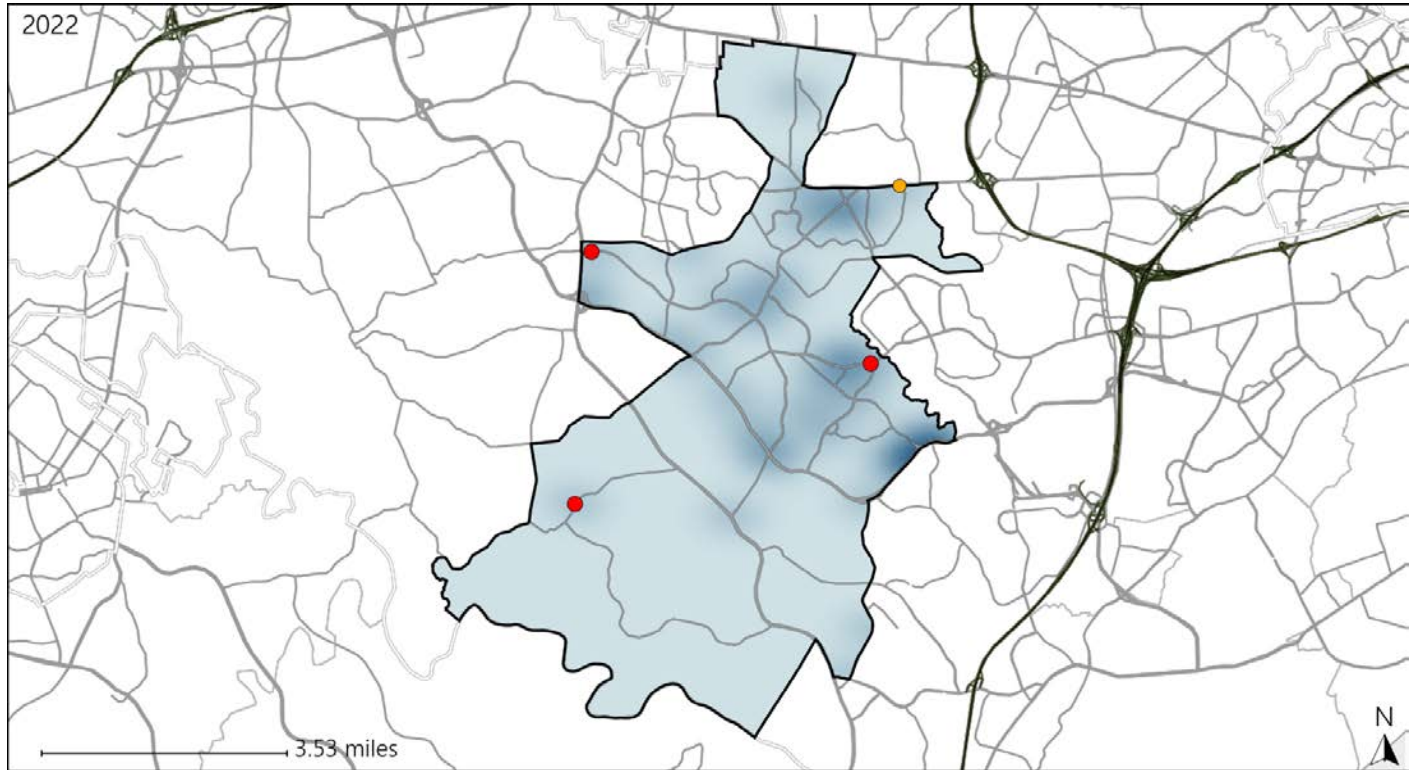


Available Crash Data - Calendar Year (CY)	CY 2019	CY 2020	CY 2021	CY 2022
Total Crashes	454	292	376	418
Fatal Crashes	1	1	3	6
Injury Crashes	132	72	129	122
Alcohol-Related Fatal Crashes	0	1	1	0
Percent of Alcohol-Related Fatal Crashes to Total Fatal Crashes	0%	100%	33%	0%
Alcohol-Related Injury Crashes	9	4	13	4
Percent of Alcohol-Related Injury Crashes to Total Injury Crashes	7%	6%	10%	3%

Virginia House District 15 Speed Crash Statistics

Report Generated May, 2023

	Count	Highest Time Period(s)	Highest Day(s)	Highest Month(s)
Fatal Crashes	3	3:00pm - 5:59pm	Monday - Saturday	August - July
Resulting Fatalities	3	6:00pm - 8:59pm (66%)	(66%)	(66%)
Serious Injury Crashes	1	9:00am - 11:59am (100%)	Tuesday (100%)	April (100%)



House District 15 Speed-Related Crashes

Interstate Crashes

Non-interstate Crashes

● Fatal

● Fatal

● Serious Injury

● Serious Injury

The blue gradient represents the density of all speed-related crashes.

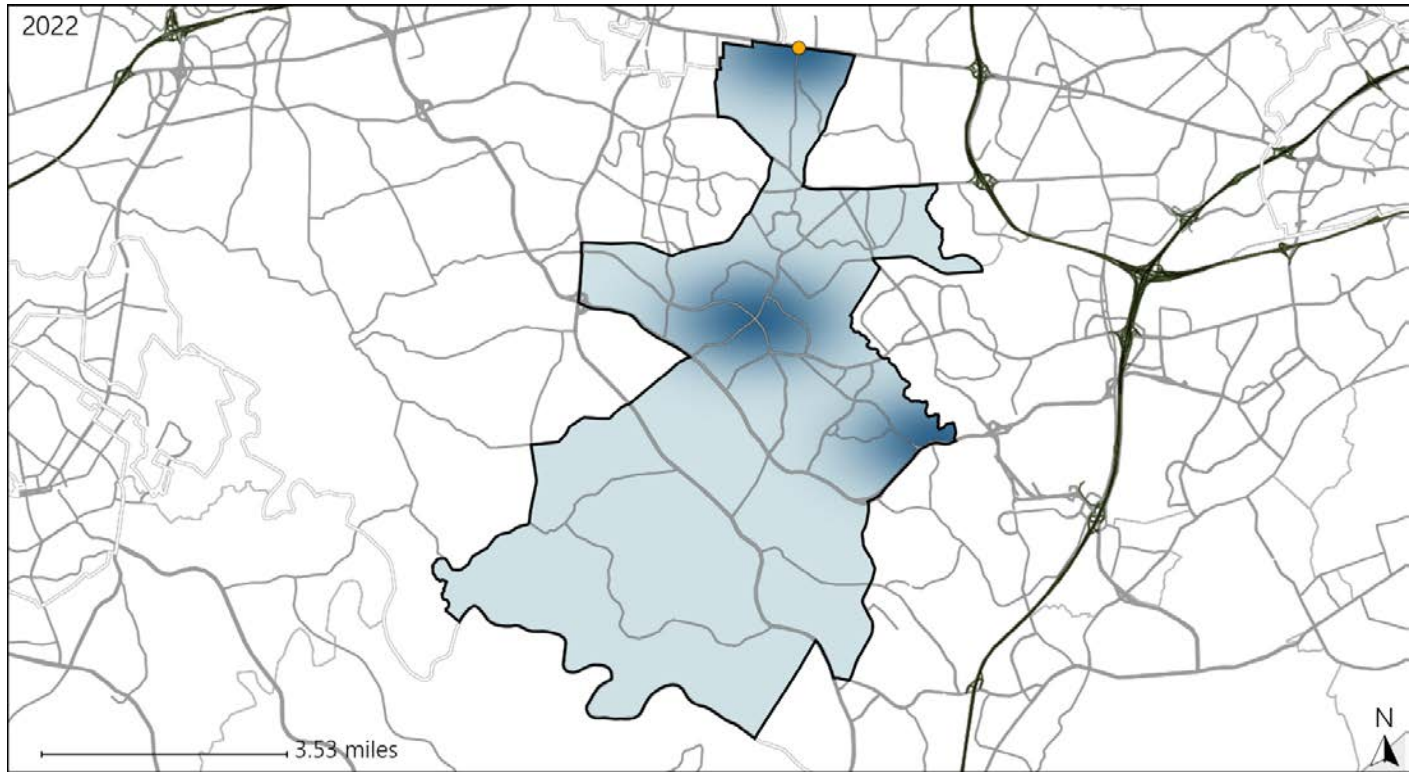


Available Crash Data - Calendar Year (CY)	CY 2019	CY 2020	CY 2021	CY 2022
Total Crashes	454	292	376	418
Fatal Crashes	1	1	3	6
Injury Crashes	132	72	129	122
Speed-Related Fatal Crashes	0	1	2	3
Percent of Speed-Related Fatal Crashes to Total Fatal Crashes	0%	100%	67%	50%
Speed-Related Injury Crashes	13	7	18	16
Percent of Speed-Related Injury Crashes to Total Injury Crashes	10%	10%	14%	13%

Virginia House District 15 Unrestrained Crash Statistics

Report Generated May, 2023

	Count	Highest Time Period(s)	Highest Day(s)	Highest Month(s)
Fatal Crashes	0	-	-	-
Unrestrained Fatalities	0	-	-	-
Serious Injury Crashes	1	6:00am - 8:59am (100%)	Saturday (100%)	November (100%)



House District 15 Unrestrained-Related Crashes

Interstate Crashes

- Fatal
- Serious Injury

Non-interstate Crashes

- Fatal
- Serious Injury

The blue gradient represents the density of all unrestrained-related crashes.

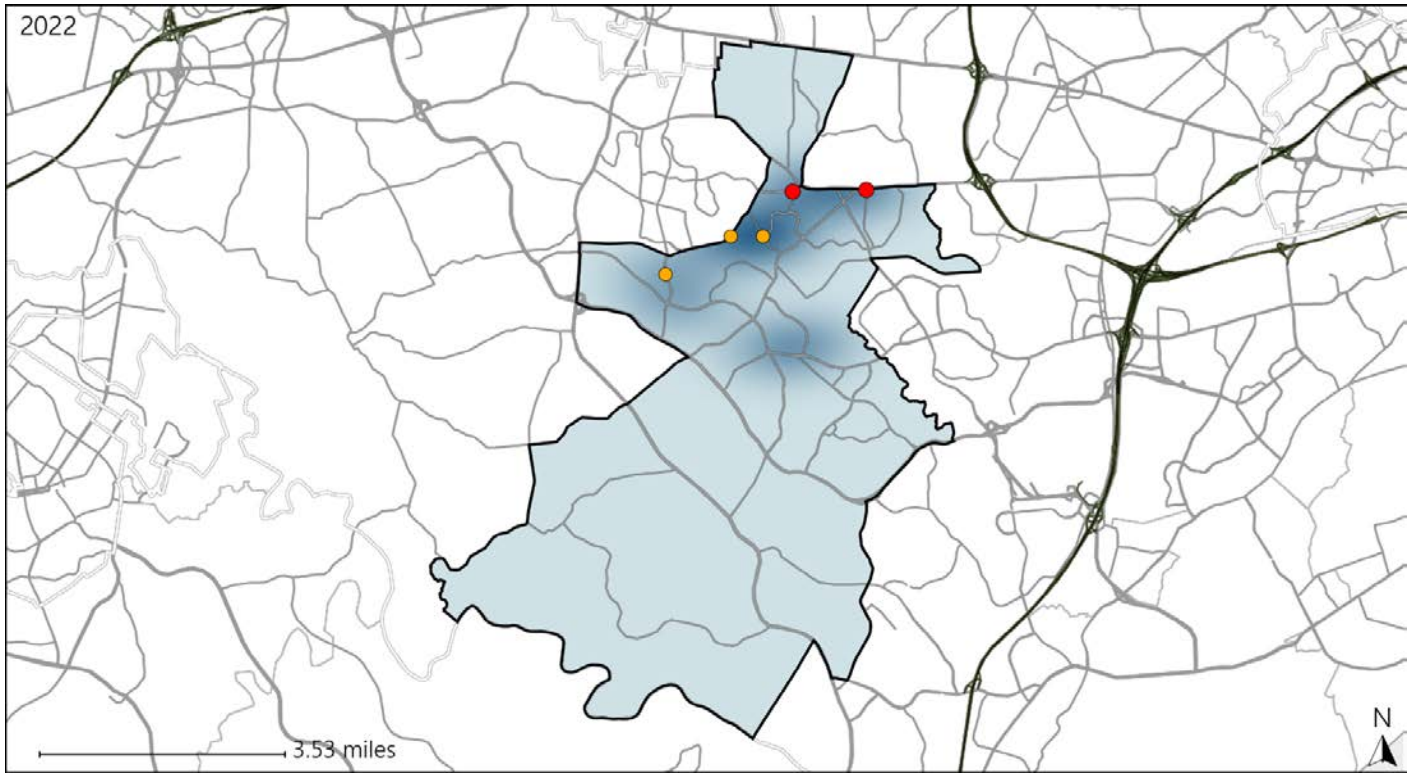


Available Crash Data - Calendar Year (CY)	CY 2019	CY 2020	CY 2021	CY 2022
Total Crashes	454	292	376	418
Fatalities	1	1	3	6
Injuries	196	101	198	184
Unrestrained Fatalities	0	1	1	0
Percent of Unrestrained Fatalities to Total Fatalities	0%	100%	33%	0%
Unrestrained Injuries	7	2	10	3
Percent of Unrestrained Injuries to Total Injuries	4%	2%	5%	2%

Virginia House District 15 Pedestrian Crash Statistics

Report Generated May, 2023

	Count	Highest Time Period(s)	Highest Day(s)	Highest Month(s)
Fatal Crashes	2	6:00am - 8:59am	Tuesday • Wednesday	April • November
Pedestrian Fatalities	2	6:00pm - 8:59pm (100%)	(100%)	(100%)
Serious Injury Crashes	3	9:00am - 11:59am 9:00pm - 11:59pm (66%)	Saturday (67%)	July • June (66%)



House District 15 Pedestrian-Related Crashes

Interstate Crashes

Non-interstate Crashes

- Fatal
- ⊕ Serious Injury

- Fatal
- Serious Injury

The blue gradient represents the density of all pedestrian-related crashes.

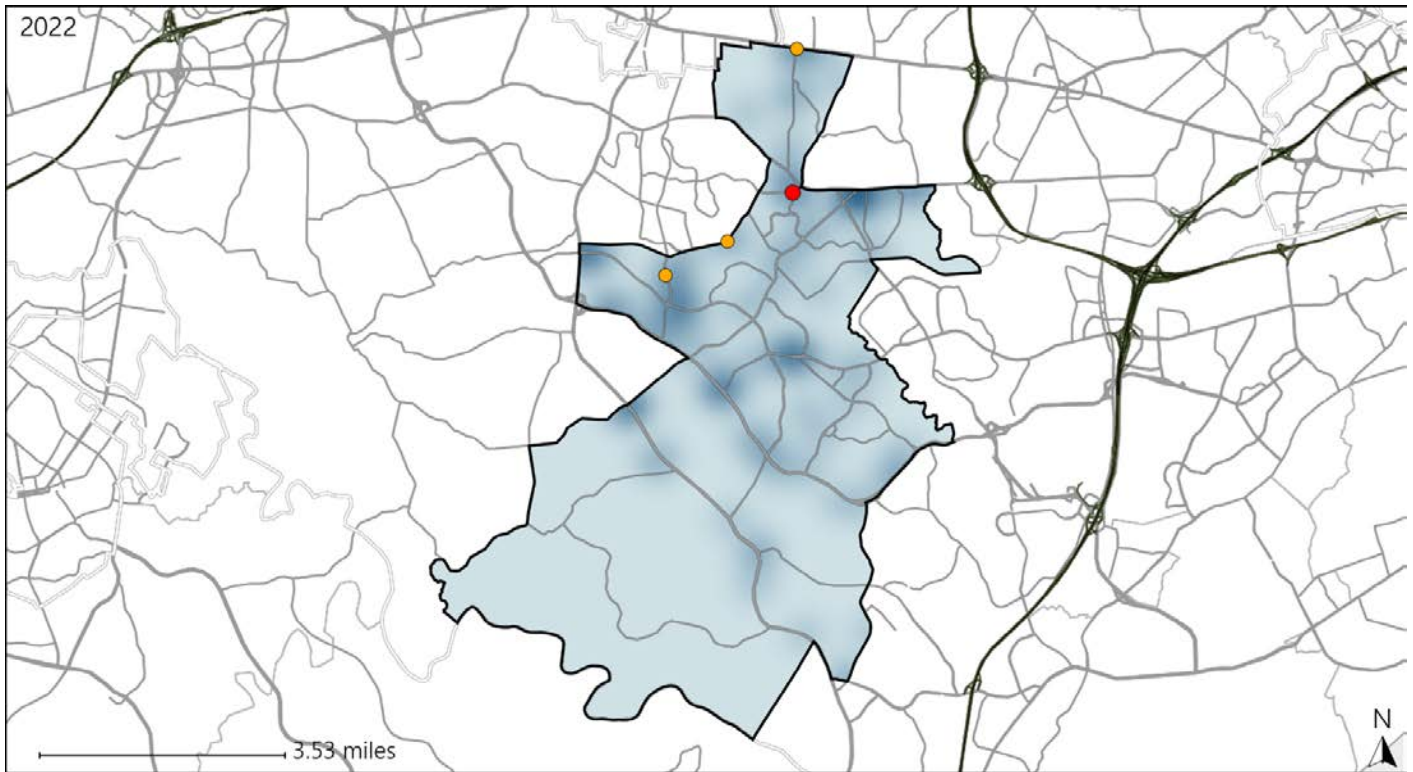


Available Crash Data - Calendar Year (CY)	CY 2019	CY 2020	CY 2021	CY 2022
Total Crashes	454	292	376	418
Fatal Crashes	1	1	3	6
Injury Crashes	132	72	129	122
Pedestrian-Related Fatal Crashes	1	0	0	2
Percent of Pedestrian-Related Fatal Crashes to Total Fatal Crashes	100%	0%	0%	33%
Pedestrian-Related Injury Crashes	6	7	6	8
Percent of Pedestrian-Related Injury Crashes to Total Injury Crashes	5%	10%	5%	7%

Virginia House District 15 Distracted Driving Crash Statistics

Report Generated May, 2023

	Count	Highest Time Period(s)	Highest Day(s)	Highest Month(s)
Fatal Crashes	1	6:00pm - 8:59pm	Wednesday	April
Resulting Fatalities	1	(100%)	(100%)	(100%)
Serious Injury Crashes	3	3:00pm - 5:59pm 6:00am - 8:59am	Saturday	August • May
		(66%)	(67%)	(66%)



House District 15 Distracted Driving-Related Crashes

- | | |
|--|--|
| Interstate Crashes | Non-interstate Crashes |
| ● Fatal | ● Fatal |
| ● Serious Injury | ● Serious Injury |

The blue gradient represents the density of all distracted driving-related crashes.



Available Crash Data - Calendar Year (CY)	CY 2019	CY 2020	CY 2021	CY 2022
Total Crashes	454	292	376	418
Fatal Crashes	1	1	3	6
Injury Crashes	132	72	129	122
Distracted Driving-Related Fatal Crashes	0	1	0	1
Percent of Distracted Driving-Related Fatal Crashes to Total Fatal Crashes	0%	100%	0%	17%
Distracted Driving-Related Injury Crashes	34	13	26	29
Percent of Distracted Driving-Related Injury Crashes to Total Injury Crashes	26%	18%	20%	24%