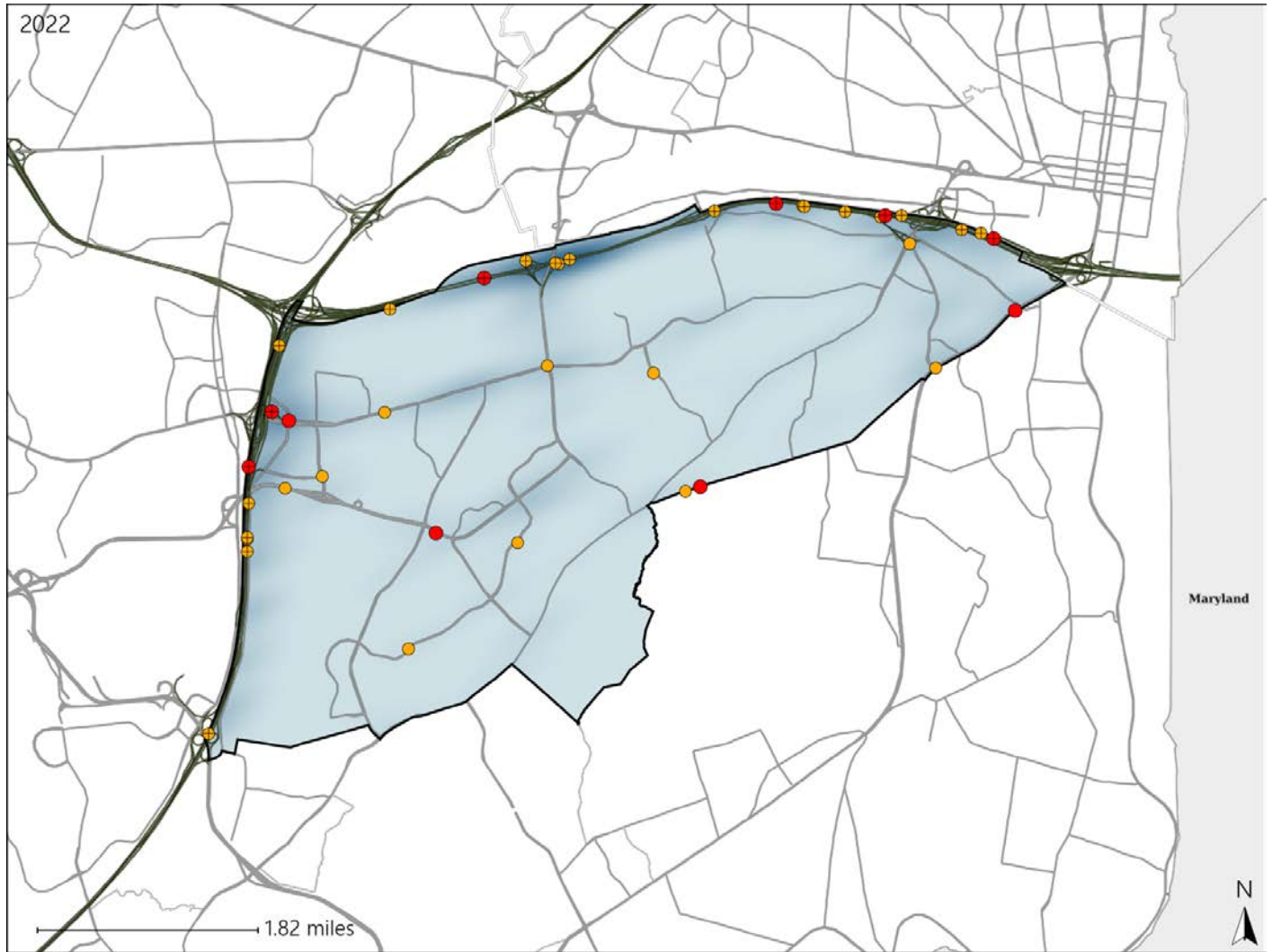


# Virginia House District 17 Crash Statistics

Report Generated May, 2023

	Count	Highest Time Period(s)	Highest Day(s)	Highest Month(s)
<b>Fatal Crashes</b>	<b>10</b>	<b>9:00pm - 11:59pm</b>	<b>Monday</b>	<b>May</b>
<b>Resulting Fatalities</b>	<b>11</b>	(30%)	(40%)	(40%)
<b>Serious Injury Crashes</b>	<b>29</b>	<b>6:00pm - 8:59pm</b>	<b>Friday</b>	<b>August - June</b>
		(24%)	(28%)	(34%)



## House District 17 Crashes

Interstate Crashes

- Fatal
- Serious Injury

Non-interstate Crashes

- Fatal
- Serious Injury

The blue gradient represents the density of all crashes.

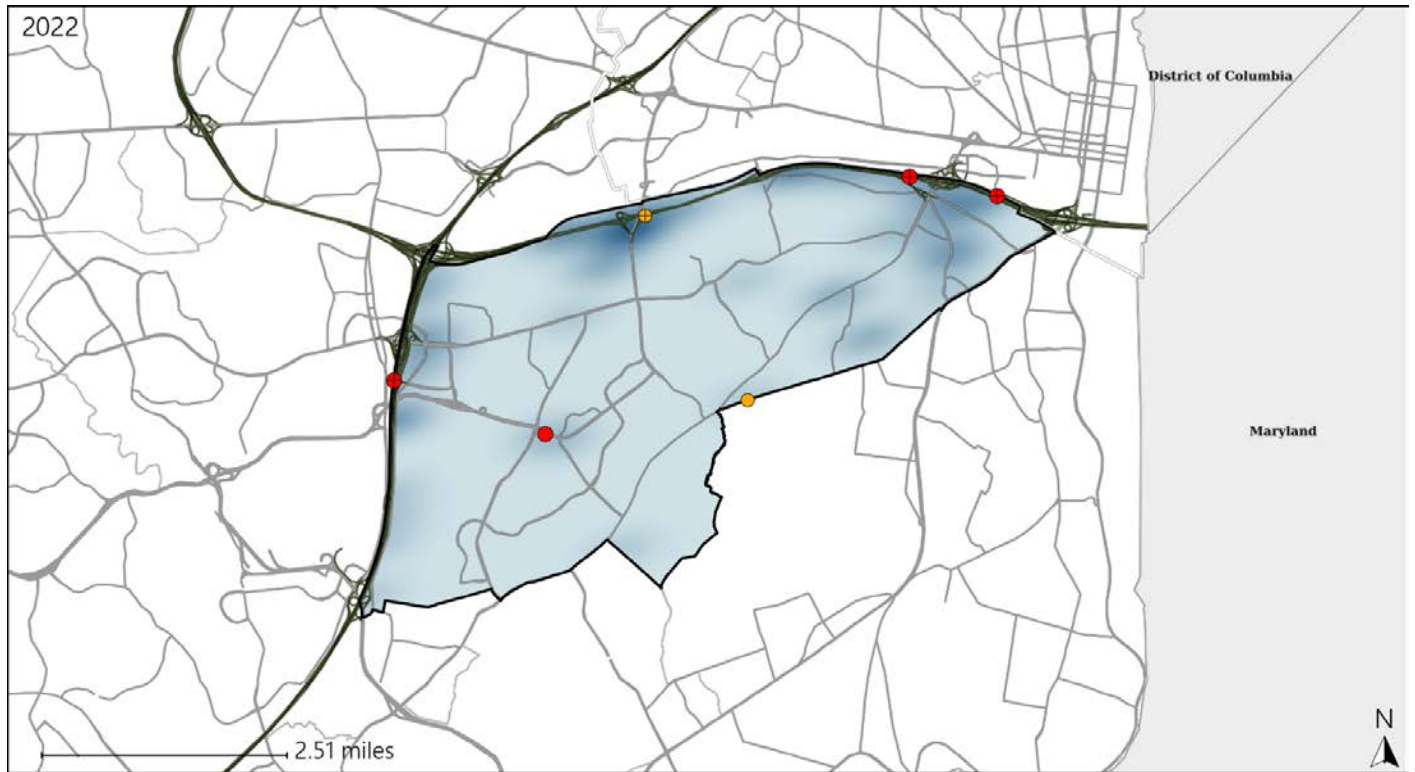


Available Crash Data - Calendar Year (CY)	CY 2019	CY 2020	CY 2021	CY 2022
Total Crashes	1069	701	857	973
Fatal Crashes	3	6	7	10
Injury Crashes	312	178	255	270

# Virginia House District 17 Alcohol Crash Statistics

Report Generated May, 2023

	Count	Highest Time Period(s)	Highest Day(s)	Highest Month(s)
<b>Fatal Crashes</b>	<b>4</b>	<b>9:00pm - 11:59pm</b>	<b>Thursday</b>	<b>May</b>
<b>Resulting Fatalities</b>	<b>5</b>	(50%)	(50%)	(75%)
<b>Serious Injury Crashes</b>	<b>2</b>	<b>9:00pm - 11:59pm Midnight - 2:59am</b>	<b>Saturday • Thursday</b>	<b>February • June</b>
		(100%)	(100%)	(100%)



## House District 17 Alcohol-Related Crashes

Interstate Crashes                      Non-interstate Crashes

- Fatal
- ⊕ Serious Injury
- Fatal
- ⊕ Serious Injury

The blue gradient represents the density of all alcohol-related crashes.

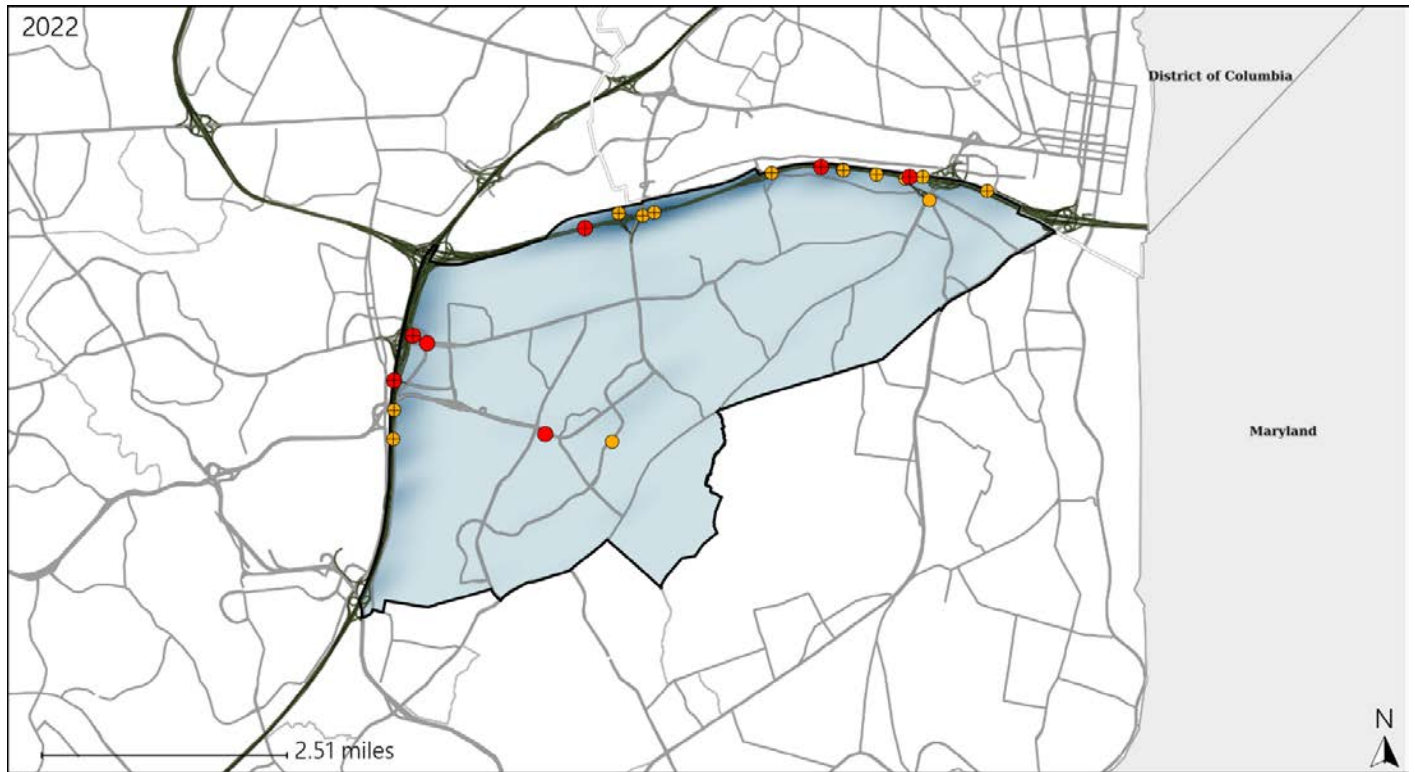


Available Crash Data - Calendar Year (CY)	CY 2019	CY 2020	CY 2021	CY 2022
Total Crashes	1069	701	857	973
Fatal Crashes	3	6	7	10
Injury Crashes	312	178	255	270
Alcohol-Related Fatal Crashes	0	1	2	4
Percent of Alcohol-Related Fatal Crashes to Total Fatal Crashes	0%	17%	29%	40%
Alcohol-Related Injury Crashes	13	10	15	15
Percent of Alcohol-Related Injury Crashes to Total Injury Crashes	4%	6%	6%	6%

# Virginia House District 17 Speed Crash Statistics

Report Generated May, 2023

	Count	Highest Time Period(s)	Highest Day(s)	Highest Month(s)
<b>Fatal Crashes</b>	<b>7</b>	<b>3:00pm - 5:59pm</b>	<b>Monday</b>	<b>March • May</b>
<b>Resulting Fatalities</b>	<b>7</b>	(29%)	(43%)	(86%)
<b>Serious Injury Crashes</b>	<b>14</b>	<b>6:00pm - 8:59pm</b> <b>Noon - 2:59pm</b>	<b>Friday</b>	<b>August • February</b>
		(58%)	(29%)	(28%)



## House District 17 Speed-Related Crashes

Interstate Crashes                      Non-interstate Crashes  
 ● Fatal                                      ● Fatal  
 ⊕ Serious Injury                          ⊕ Serious Injury

The blue gradient represents the density of all speed-related crashes.

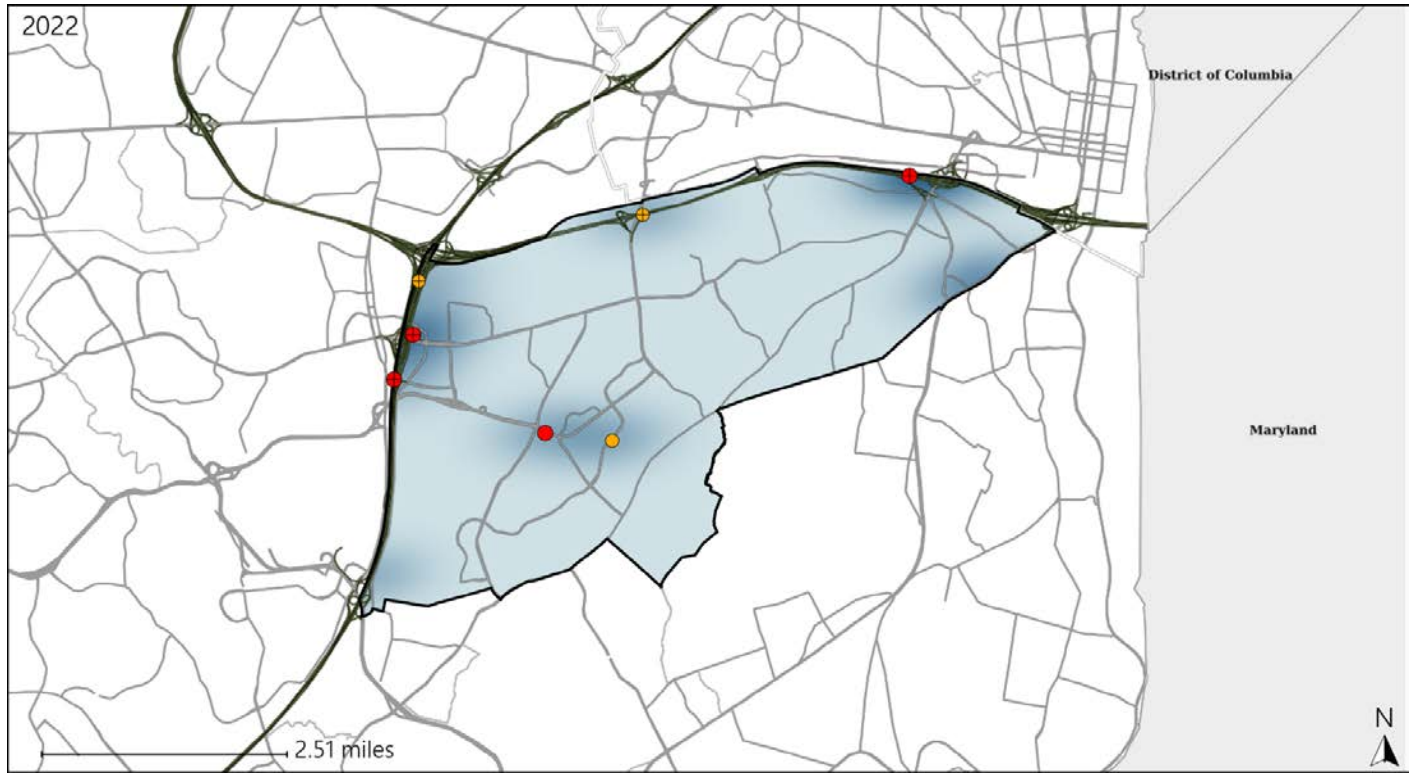


Available Crash Data - Calendar Year (CY)	CY 2019	CY 2020	CY 2021	CY 2022
Total Crashes	1069	701	857	973
Fatal Crashes	3	6	7	10
Injury Crashes	312	178	255	270
Speed-Related Fatal Crashes	0	3	2	7
Percent of Speed-Related Fatal Crashes to Total Fatal Crashes	0%	50%	29%	70%
Speed-Related Injury Crashes	112	58	112	94
Percent of Speed-Related Injury Crashes to Total Injury Crashes	36%	33%	44%	35%

# Virginia House District 17 Unrestrained Crash Statistics

Report Generated May, 2023

	Count	Highest Time Period(s)	Highest Day(s)	Highest Month(s)
<b>Fatal Crashes</b>	<b>4</b>	3:00am - 5:59am	Monday	May
<b>Unrestrained Fatalities</b>	<b>4</b>	9:00am - 11:59am (50%)	(50%)	(50%)
<b>Serious Injury Crashes</b>	<b>3</b>	3:00am - 5:59am 3:00pm - 5:59pm (66%)	Monday • Saturday (66%)	April • December (66%)



### House District 17 Unrestrained-Related Crashes

- |                    |                        |
|--------------------|------------------------|
| Interstate Crashes | Non-interstate Crashes |
| ● Fatal            | ● Fatal                |
| ⊕ Serious Injury   | ⊕ Serious Injury       |

The blue gradient represents the density of all unrestrained-related crashes.



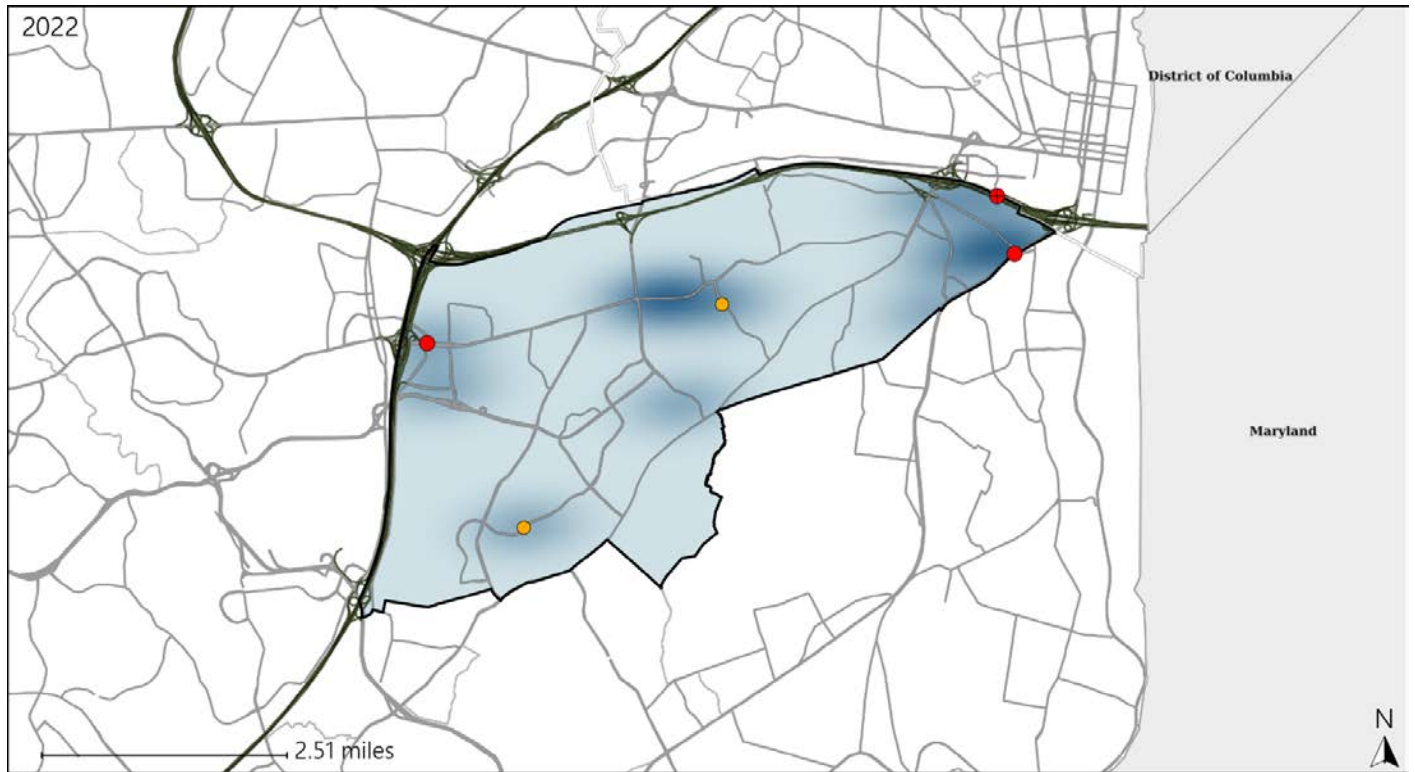
Available Crash Data - Calendar Year (CY)	CY 2019	CY 2020	CY 2021	CY 2022
<b>Total Crashes</b>	<b>1069</b>	<b>701</b>	<b>857</b>	<b>973</b>
<b>Fatalities</b>	<b>3</b>	<b>6</b>	<b>7</b>	<b>11</b>
<b>Injuries</b>	<b>453</b>	<b>259</b>	<b>417</b>	<b>407</b>
<b>Unrestrained Fatalities</b>	<b>0</b>	<b>2</b>	<b>3</b>	<b>4</b>
<b>Percent of Unrestrained Fatalities to Total Fatalities</b>	<b>0%</b>	<b>33%</b>	<b>43%</b>	<b>36%</b>
<b>Unrestrained Injuries</b>	<b>5</b>	<b>11</b>	<b>19</b>	<b>12</b>
<b>Percent of Unrestrained Injuries to Total Injuries</b>	<b>1%</b>	<b>4%</b>	<b>5%</b>	<b>3%</b>



# Virginia House District 17 Pedestrian Crash Statistics

Report Generated May, 2023

	Count	Highest Time Period(s)	Highest Day(s)	Highest Month(s)
<b>Fatal Crashes</b>	<b>3</b>	<b>9:00pm - 11:59pm</b>	<b>Monday • Thursday</b>	<b>July • March</b>
<b>Pedestrian Fatalities</b>	<b>4</b>	<b>(67%)</b>	<b>(66%)</b>	<b>(66%)</b>
<b>Serious Injury Crashes</b>	<b>2</b>	<b>3:00pm - 5:59pm</b> <b>6:00pm - 8:59pm</b>	<b>Saturday • Thursday</b>	<b>August • October</b>
		<b>(100%)</b>	<b>(100%)</b>	<b>(100%)</b>



### House District 17 Pedestrian-Related Crashes

Interstate Crashes

Non-interstate Crashes

- Fatal
- Serious Injury

- Fatal
- Serious Injury

The blue gradient represents the density of all pedestrian-related crashes.

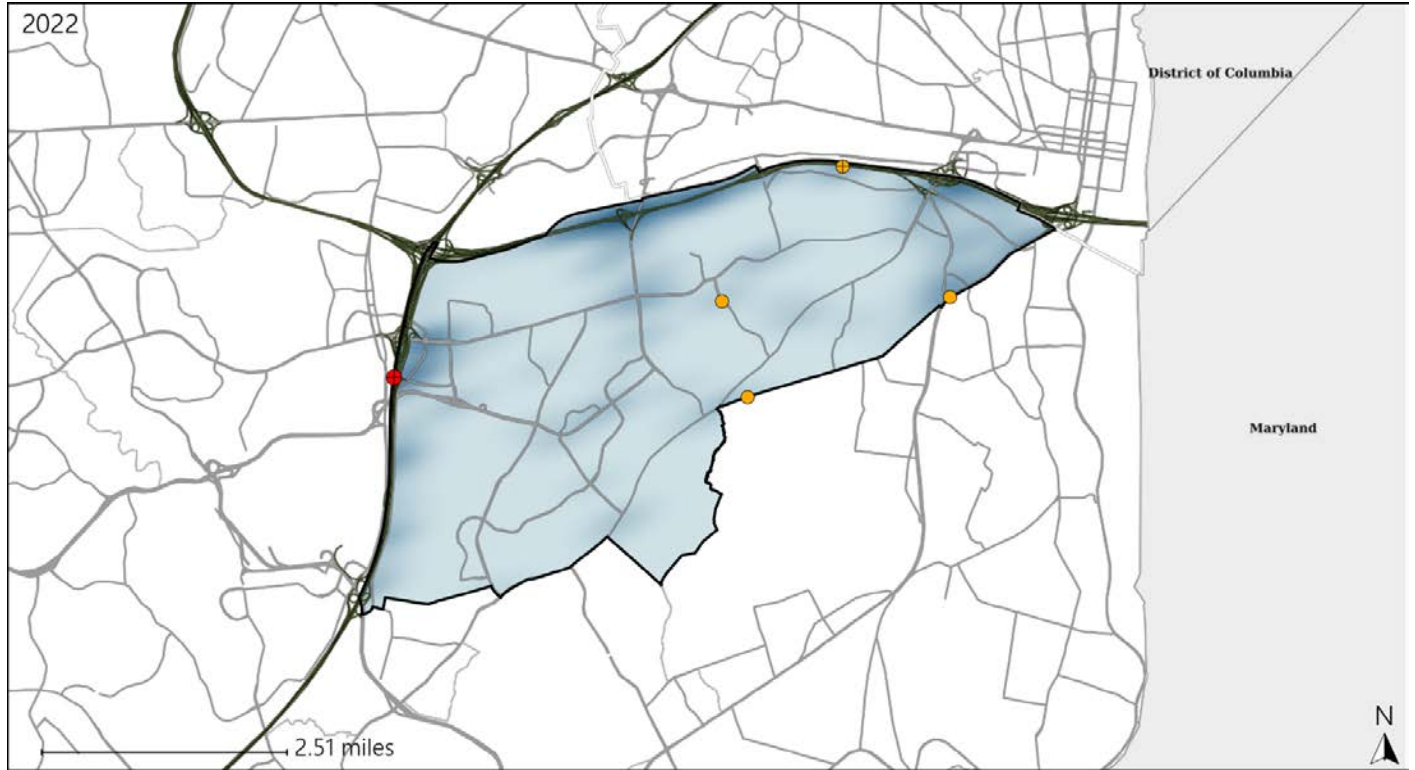


Available Crash Data - Calendar Year (CY)	CY 2019	CY 2020	CY 2021	CY 2022
Total Crashes	1069	701	857	973
Fatal Crashes	3	6	7	10
Injury Crashes	312	178	255	270
Pedestrian-Related Fatal Crashes	2	1	2	3
Percent of Pedestrian-Related Fatal Crashes to Total Fatal Crashes	67%	17%	29%	30%
Pedestrian-Related Injury Crashes	10	6	17	10
Percent of Pedestrian-Related Injury Crashes to Total Injury Crashes	3%	3%	7%	4%

# Virginia House District 17 Distracted Driving Crash Statistics

Report Generated May, 2023

	Count	Highest Time Period(s)	Highest Day(s)	Highest Month(s)
<b>Fatal Crashes</b>	<b>1</b>	<b>3:00am - 5:59am</b>	<b>Monday</b>	<b>May</b>
<b>Resulting Fatalities</b>	<b>1</b>	(100%)	(100%)	(100%)
<b>Serious Injury Crashes</b>	<b>4</b>	<b>9:00pm - 11:59pm</b>	<b>Saturday</b>	<b>August</b>
		(50%)	(75%)	(50%)



## House District 17 Distracted Driving-Related Crashes

- |                    |                        |
|--------------------|------------------------|
| Interstate Crashes | Non-interstate Crashes |
| Fatal              | Fatal                  |
| Serious Injury     | Serious Injury         |

The blue gradient represents the density of all distracted driving-related crashes.



Available Crash Data - Calendar Year (CY)	CY 2019	CY 2020	CY 2021	CY 2022
Total Crashes	1069	701	857	973
Fatal Crashes	3	6	7	10
Injury Crashes	312	178	255	270
Distracted Driving-Related Fatal Crashes	0	0	0	1
Percent of Distracted Driving-Related Fatal Crashes to Total Fatal Crashes	0%	0%	0%	10%
Distracted Driving-Related Injury Crashes	50	37	44	46
Percent of Distracted Driving-Related Injury Crashes to Total Injury Crashes	16%	21%	17%	17%