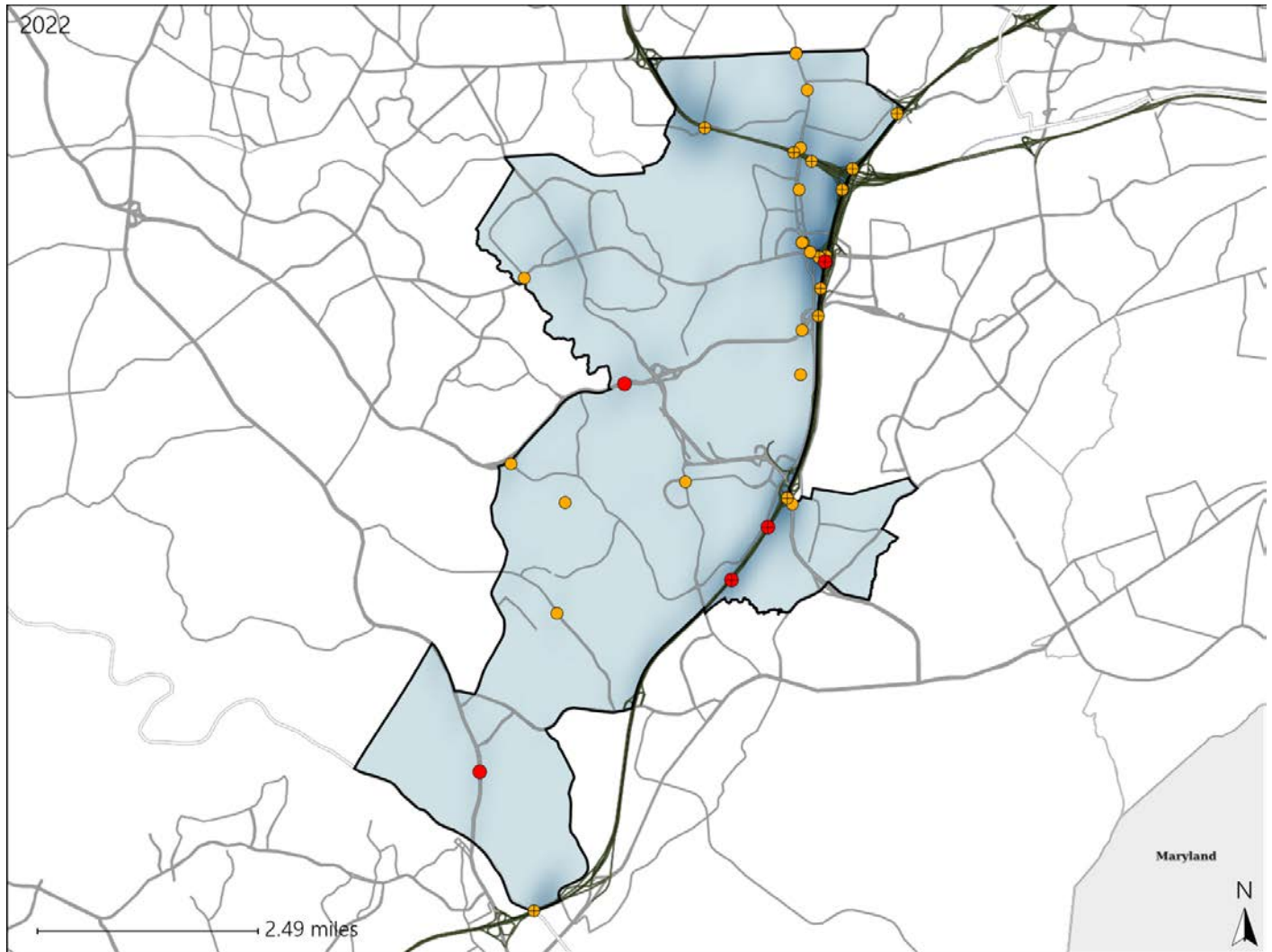


# Virginia House District 18 Crash Statistics

Report Generated May, 2023

	Count	Highest Time Period(s)	Highest Day(s)	Highest Month(s)
<b>Fatal Crashes</b>	<b>5</b>	3:00am - 5:59am	Saturday	February • January
<b>Resulting Fatalities</b>	<b>5</b>	3:00pm - 5:59pm (40%)	(40%)	(40%)
<b>Serious Injury Crashes</b>	<b>30</b>	3:00am - 5:59am (23%)	Monday • Saturday (40%)	December (20%)



## House District 18 Crashes

Interstate Crashes

- Fatal
- Serious Injury

Non-interstate Crashes

- Fatal
- Serious Injury

The blue gradient represents the density of all crashes.

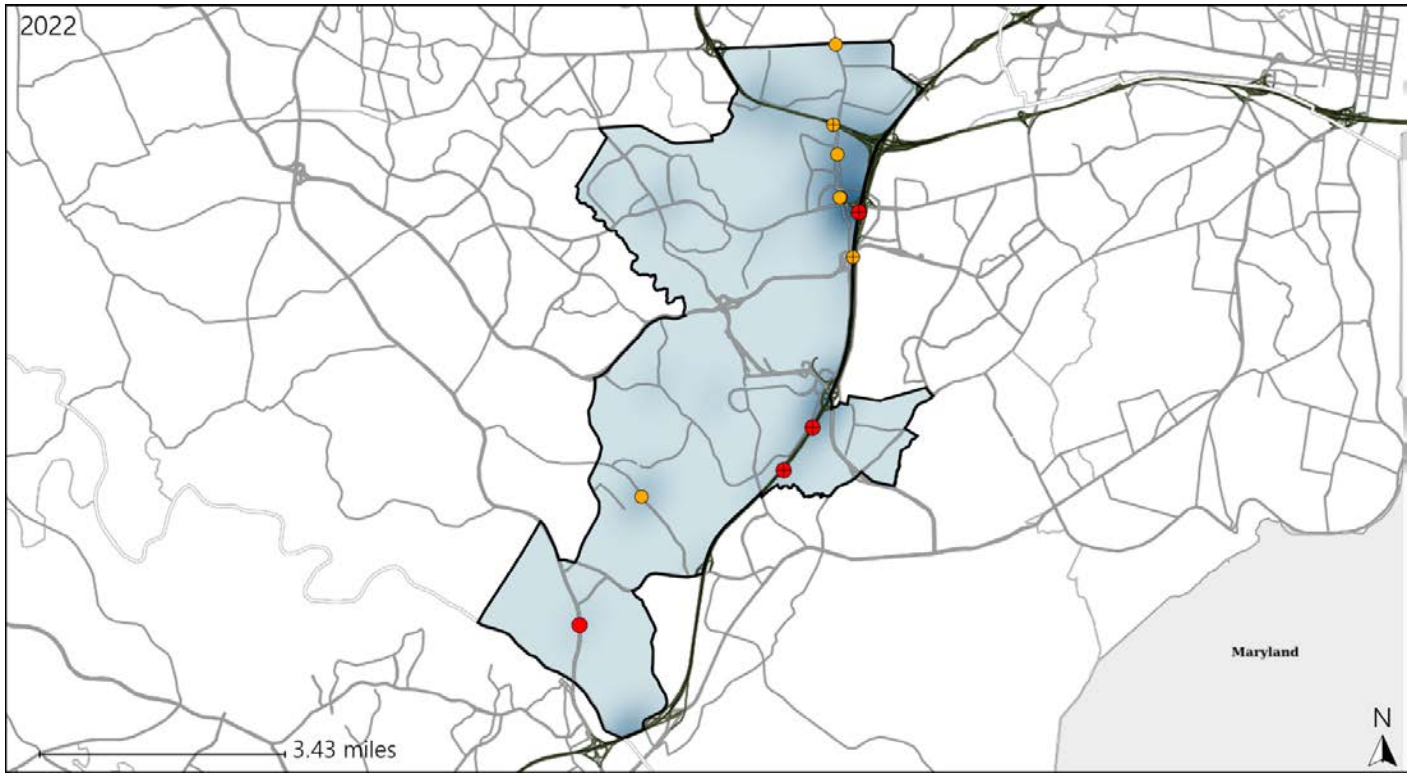


Available Crash Data - Calendar Year (CY)	CY 2019	CY 2020	CY 2021	CY 2022
Total Crashes	1086	813	939	1109
Fatal Crashes	5	5	4	5
Injury Crashes	296	192	279	293

# Virginia House District 18 Alcohol Crash Statistics

Report Generated May, 2023

	Count	Highest Time Period(s)	Highest Day(s)	Highest Month(s)
<b>Fatal Crashes</b>	<b>4</b>	3:00am - 5:59am	Saturday	February • January
<b>Resulting Fatalities</b>	<b>4</b>	3:00pm - 5:59pm (50%)	(50%)	(50%)
<b>Serious Injury Crashes</b>	<b>7</b>	6:00am - 8:59am 6:00pm - 8:59pm (58%)	Sunday • Thursday (58%)	April (29%)



## House District 18 Alcohol-Related Crashes

Interstate Crashes                      Non-interstate Crashes  
 ● Fatal                                      ● Fatal  
 ⊕ Serious Injury                          ⊕ Serious Injury

The blue gradient represents the density of all alcohol-related crashes.

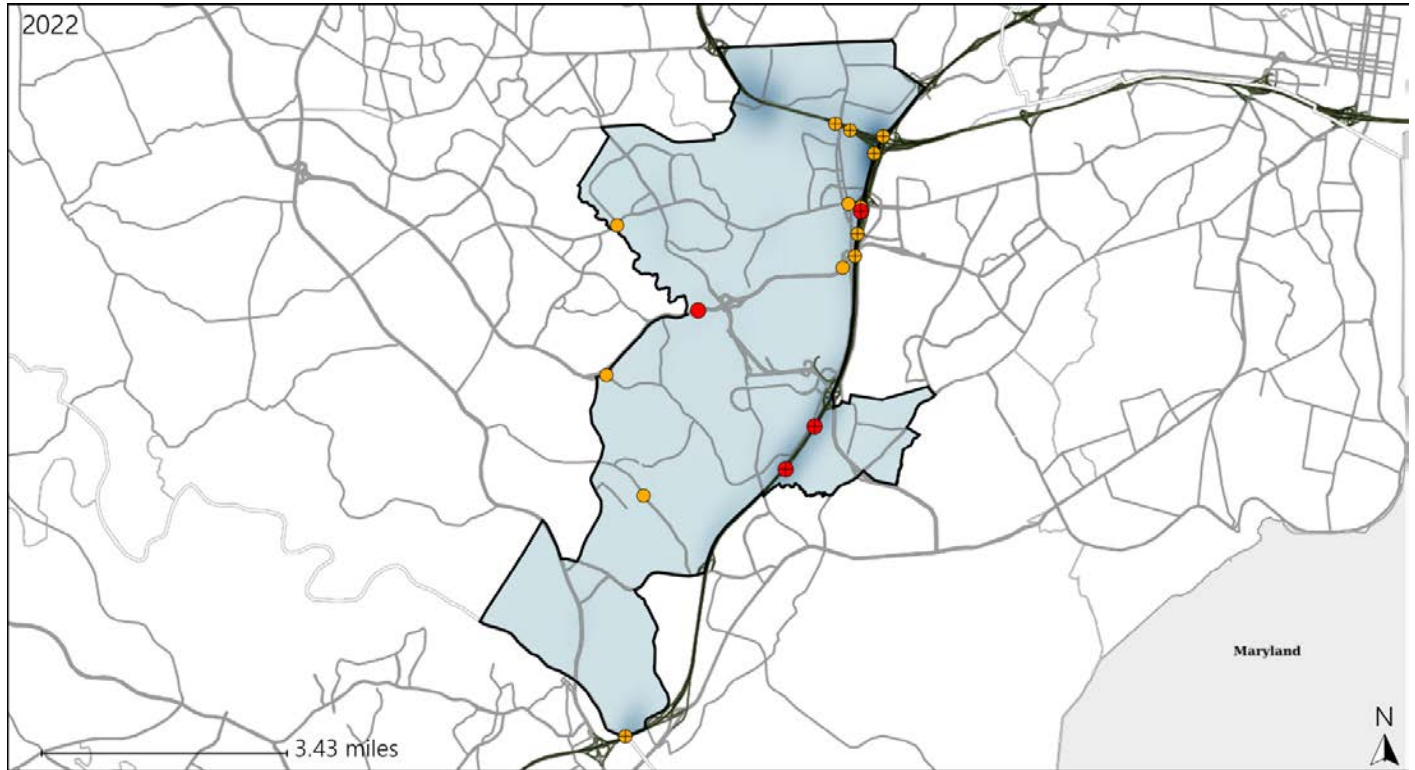


Available Crash Data - Calendar Year (CY)	CY 2019	CY 2020	CY 2021	CY 2022
Total Crashes	1086	813	939	1109
Fatal Crashes	5	5	4	5
Injury Crashes	296	192	279	293
Alcohol-Related Fatal Crashes	4	1	0	4
Percent of Alcohol-Related Fatal Crashes to Total Fatal Crashes	80%	20%	0%	80%
Alcohol-Related Injury Crashes	17	8	18	18
Percent of Alcohol-Related Injury Crashes to Total Injury Crashes	6%	4%	6%	6%

# Virginia House District 18 Speed Crash Statistics

Report Generated May, 2023

	Count	Highest Time Period(s)	Highest Day(s)	Highest Month(s)
<b>Fatal Crashes</b>	<b>4</b>	3:00am - 5:59am	Friday • Monday	January • May
<b>Resulting Fatalities</b>	<b>4</b>	3:00pm - 5:59pm (50%)	(50%)	(50%)
<b>Serious Injury Crashes</b>	<b>13</b>	3:00am - 5:59am (31%)	Saturday (31%)	October (31%)



## House District 18 Speed-Related Crashes

Interstate Crashes

Non-interstate Crashes

- Fatal
- Serious Injury

- Fatal
- Serious Injury

The blue gradient represents the density of all speed-related crashes.

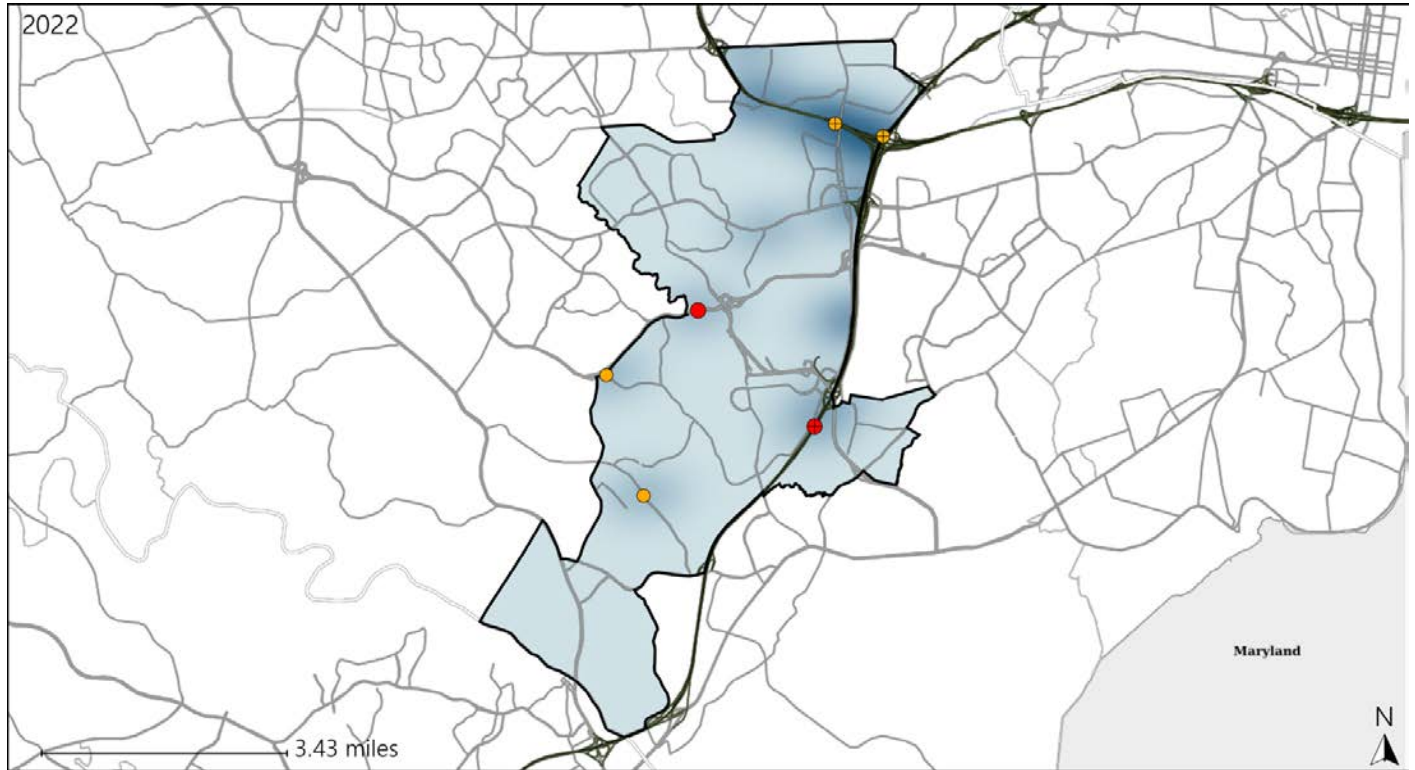


Available Crash Data - Calendar Year (CY)	CY 2019	CY 2020	CY 2021	CY 2022
Total Crashes	1086	813	939	1109
Fatal Crashes	5	5	4	5
Injury Crashes	296	192	279	293
Speed-Related Fatal Crashes	3	3	3	4
Percent of Speed-Related Fatal Crashes to Total Fatal Crashes	60%	60%	75%	80%
Speed-Related Injury Crashes	104	62	93	98
Percent of Speed-Related Injury Crashes to Total Injury Crashes	35%	32%	33%	33%

# Virginia House District 18 Unrestrained Crash Statistics

Report Generated May, 2023

	Count	Highest Time Period(s)	Highest Day(s)	Highest Month(s)
<b>Fatal Crashes</b>	<b>2</b>	<b>3:00am - 5:59am</b>	<b>Friday • Monday</b>	<b>January • November</b>
<b>Unrestrained Fatalities</b>	<b>2</b>	<b>6:00am - 8:59am</b> (100%)	<b>(100%)</b>	<b>(100%)</b>
<b>Serious Injury Crashes</b>	<b>4</b>	<b>3:00am - 5:59am</b> (50%)	<b>Monday • Sunday</b> (50%)	<b>October</b> (50%)



## House District 18 Unrestrained-Related Crashes

- |  |  |
|--|--|
| Interstate Crashes                                   | Non-interstate Crashes                               |
| <span style="color: red;">●</span> Fatal             | <span style="color: red;">●</span> Fatal             |
| <span style="color: yellow;">●</span> Serious Injury | <span style="color: yellow;">●</span> Serious Injury |

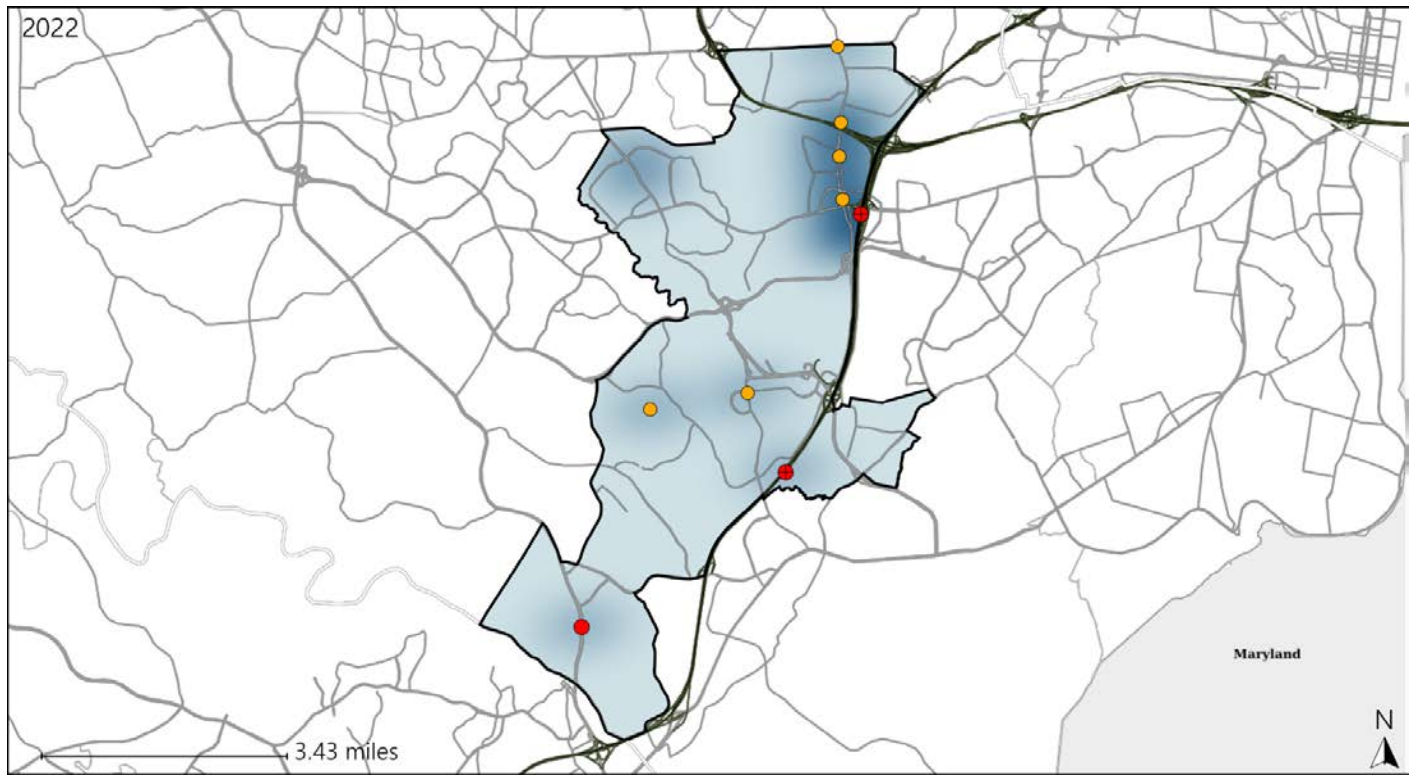
The blue gradient represents the density of all unrestrained-related crashes.

Available Crash Data - Calendar Year (CY)	CY 2019	CY 2020	CY 2021	CY 2022
Total Crashes	1086	813	939	1109
Fatalities	5	5	4	5
Injuries	449	286	419	450
Unrestrained Fatalities	2	0	2	2
Percent of Unrestrained Fatalities to Total Fatalities	40%	0%	50%	40%
Unrestrained Injuries	10	17	13	18
Percent of Unrestrained Injuries to Total Injuries	2%	6%	3%	4%

# Virginia House District 18 Pedestrian Crash Statistics

Report Generated May, 2023

	Count	Highest Time Period(s)	Highest Day(s)	Highest Month(s)
<b>Fatal Crashes</b>	<b>3</b>	3:00pm - 5:59pm	Saturday	February • May
<b>Pedestrian Fatalities</b>	<b>3</b>	6:00pm - 8:59pm (66%)	(67%)	(66%)
<b>Serious Injury Crashes</b>	<b>6</b>	6:00pm - 8:59pm 9:00am - 11:59am (66%)	Wednesday (33%)	December (67%)



### House District 18 Pedestrian-Related Crashes

Interstate Crashes                      Non-interstate Crashes  
 ● Fatal                                      ● Fatal  
 ⊕ Serious Injury                          ⊕ Serious Injury

The blue gradient represents the density of all pedestrian-related crashes.

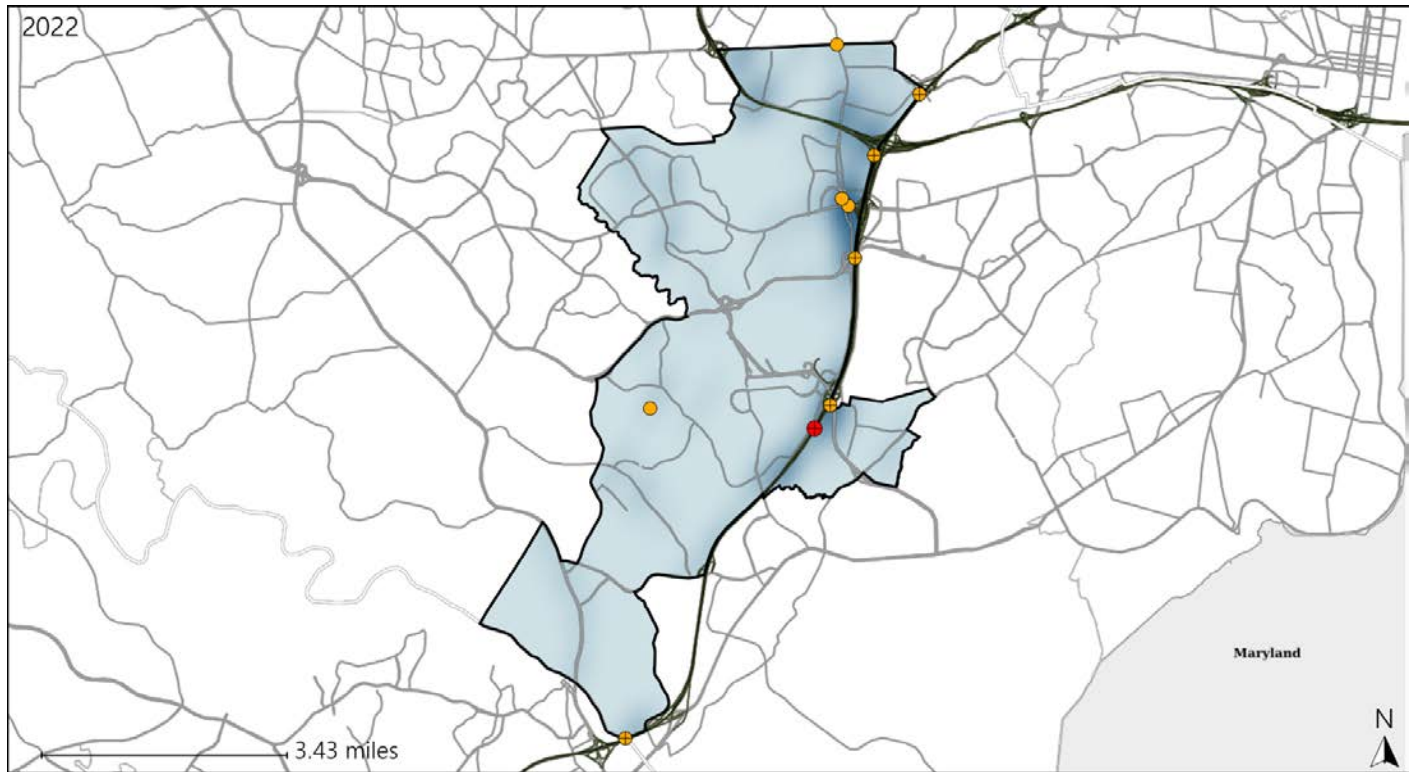


Available Crash Data - Calendar Year (CY)	CY 2019	CY 2020	CY 2021	CY 2022
Total Crashes	1086	813	939	1109
Fatal Crashes	5	5	4	5
Injury Crashes	296	192	279	293
Pedestrian-Related Fatal Crashes	1	3	0	3
Percent of Pedestrian-Related Fatal Crashes to Total Fatal Crashes	20%	60%	0%	60%
Pedestrian-Related Injury Crashes	13	5	7	12
Percent of Pedestrian-Related Injury Crashes to Total Injury Crashes	4%	3%	3%	4%

# Virginia House District 18 Distracted Driving Crash Statistics

Report Generated May, 2023

	Count	Highest Time Period(s)	Highest Day(s)	Highest Month(s)
<b>Fatal Crashes</b>	<b>1</b>	<b>3:00am - 5:59am</b>	<b>Monday</b>	<b>January</b>
<b>Resulting Fatalities</b>	<b>1</b>	(100%)	(100%)	(100%)
<b>Serious Injury Crashes</b>	<b>9</b>	<b>3:00am - 5:59am 3:00pm - 5:59pm</b>	<b>Saturday</b>	<b>December • January</b>
		(44%)	(56%)	(44%)



## House District 18 Distracted Driving-Related Crashes

- |  |  |
|--|--|
| Interstate Crashes                                   | Non-interstate Crashes                               |
| <span style="color: red;">●</span> Fatal             | <span style="color: red;">●</span> Fatal             |
| <span style="color: orange;">●</span> Serious Injury | <span style="color: orange;">●</span> Serious Injury |

The blue gradient represents the density of all distracted driving-related crashes.



Available Crash Data - Calendar Year (CY)	CY 2019	CY 2020	CY 2021	CY 2022
Total Crashes	1086	813	939	1109
Fatal Crashes	5	5	4	5
Injury Crashes	296	192	279	293
Distracted Driving-Related Fatal Crashes	0	1	1	1
Percent of Distracted Driving-Related Fatal Crashes to Total Fatal Crashes	0%	20%	25%	20%
Distracted Driving-Related Injury Crashes	73	55	69	61
Percent of Distracted Driving-Related Injury Crashes to Total Injury Crashes	25%	29%	25%	21%