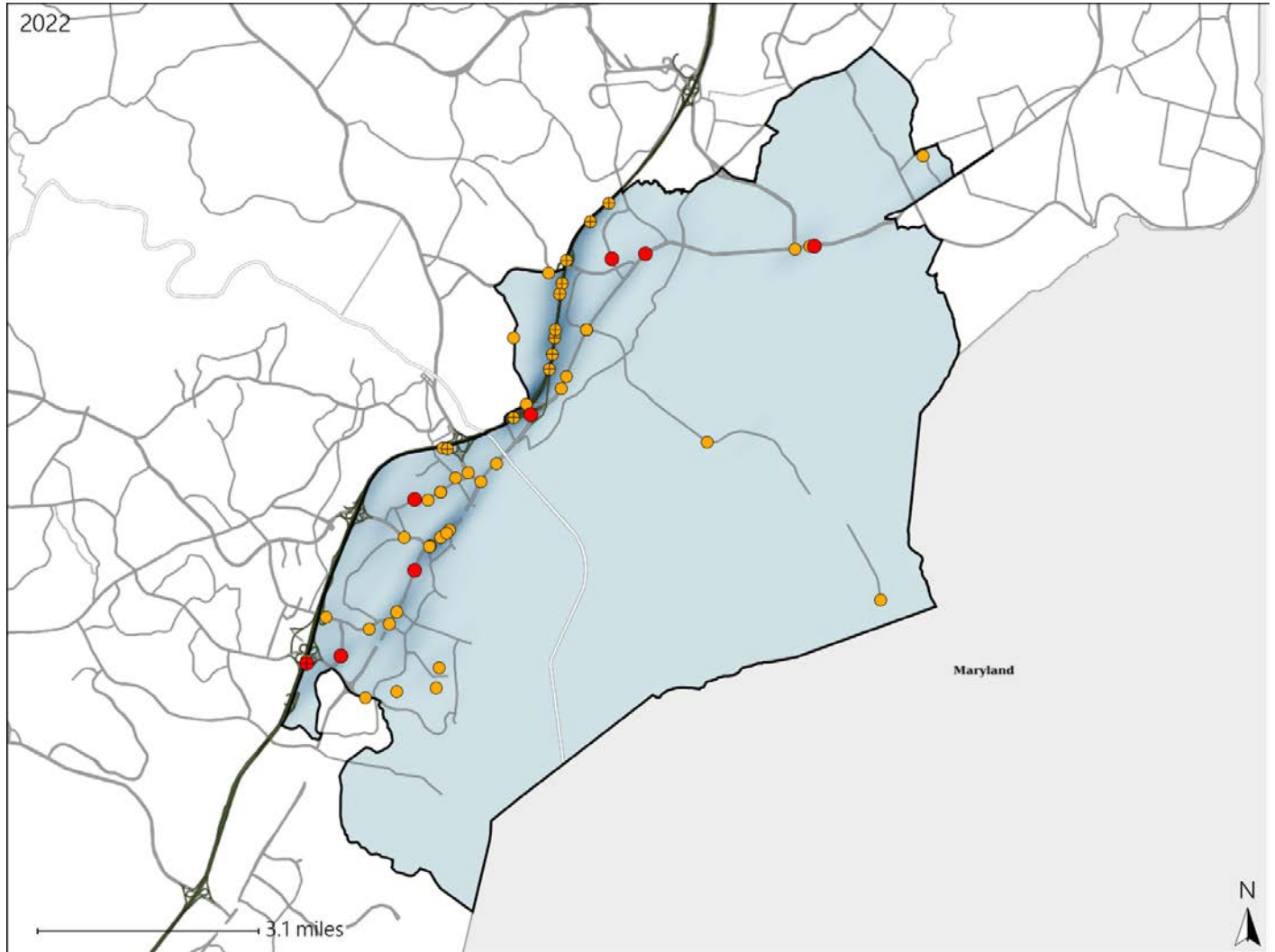


Virginia House District 19 Crash Statistics

Report Generated May, 2023

	Count	Highest Time Period(s)	Highest Day(s)	Highest Month(s)
Fatal Crashes	8	9:00am - 11:59am	Monday - Saturday	October
Resulting Fatalities	8	Midnight - 2:59am (50%)	(50%)	(38%)
Serious Injury Crashes	46	9:00pm - 11:59pm (20%)	Saturday (20%)	November (17%)



House District 19 Crashes

Interstate Crashes

- Fatal
- Serious Injury

Non-interstate Crashes

- Fatal
- Serious Injury

The blue gradient represents the density of all crashes.

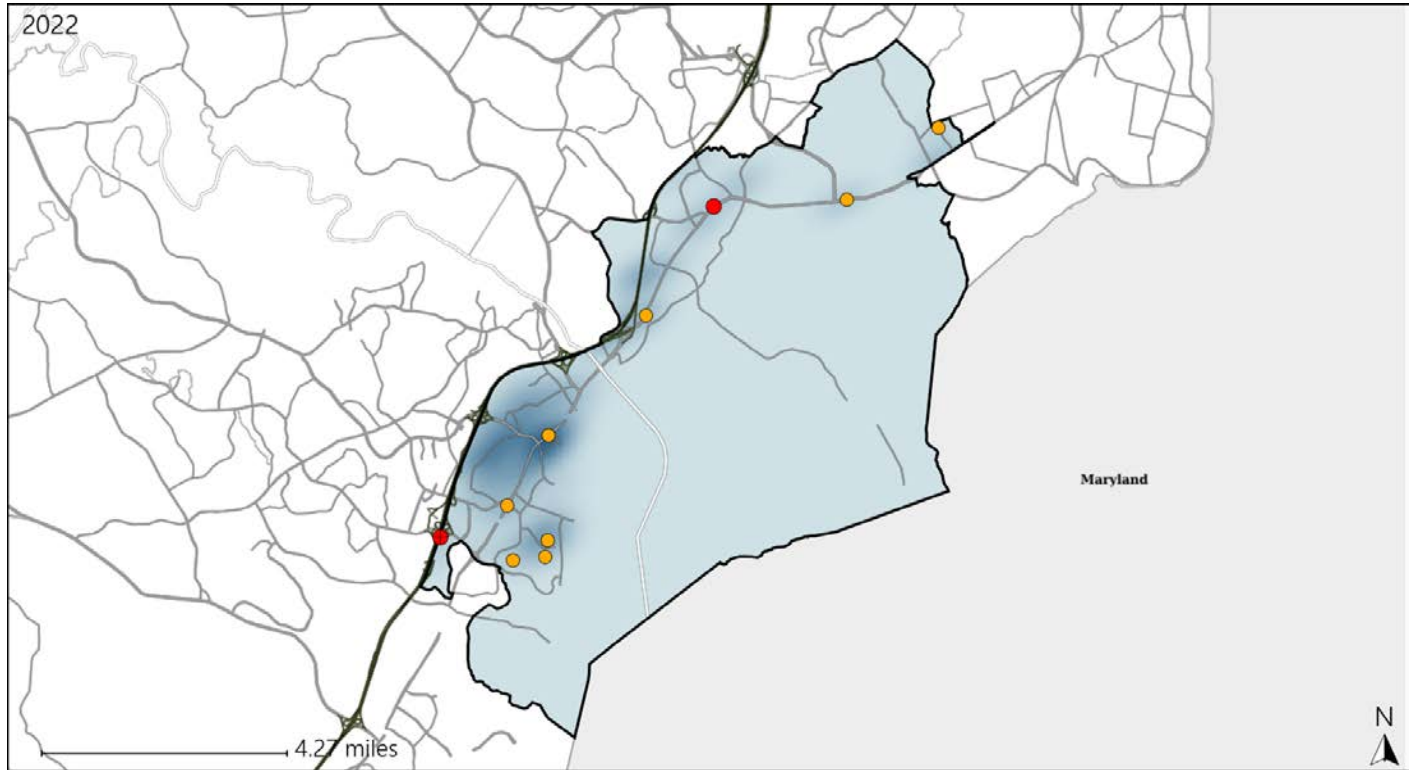


Available Crash Data - Calendar Year (CY)	CY 2019	CY 2020	CY 2021	CY 2022
Total Crashes	1285	949	1196	1205
Fatal Crashes	2	7	5	8
Injury Crashes	356	256	361	342

Virginia House District 19 Alcohol Crash Statistics

Report Generated May, 2023

	Count	Highest Time Period(s)	Highest Day(s)	Highest Month(s)
Fatal Crashes	2	3:00am - 5:59am	Saturday • Sunday	January • July
Resulting Fatalities	2	Midnight - 2:59am (100%)	(100%)	(100%)
Serious Injury Crashes	8	9:00pm - 11:59pm (62%)	Saturday (38%)	November (38%)



House District 19 Alcohol-Related Crashes

Interstate Crashes

Non-interstate Crashes

● Fatal

● Fatal

⊕ Serious Injury

⊕ Serious Injury

The blue gradient represents the density of all alcohol-related crashes.

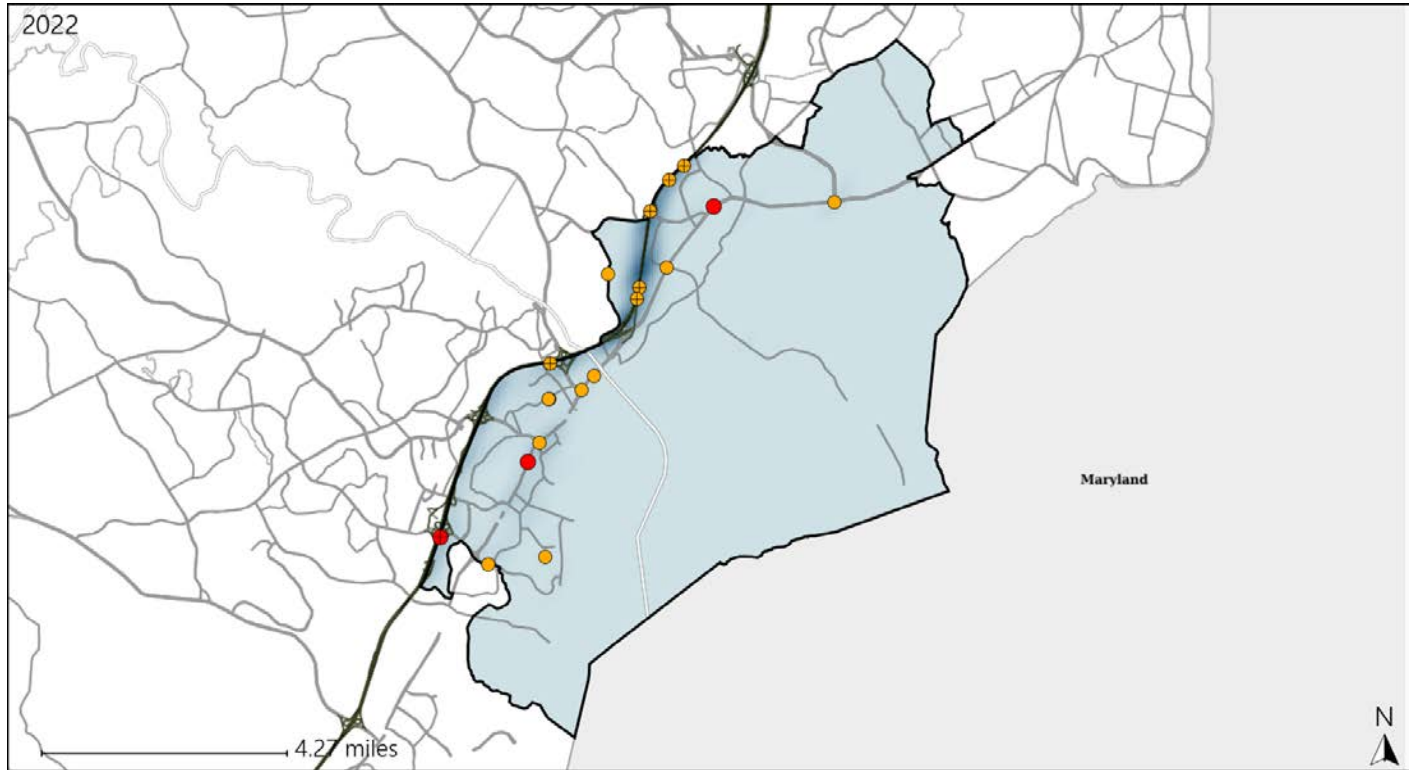


Available Crash Data - Calendar Year (CY)	CY 2019	CY 2020	CY 2021	CY 2022
Total Crashes	1285	949	1196	1205
Fatal Crashes	2	7	5	8
Injury Crashes	356	256	361	342
Alcohol-Related Fatal Crashes	0	4	3	2
Percent of Alcohol-Related Fatal Crashes to Total Fatal Crashes	0%	57%	60%	25%
Alcohol-Related Injury Crashes	18	23	40	25
Percent of Alcohol-Related Injury Crashes to Total Injury Crashes	5%	9%	11%	7%

Virginia House District 19 Speed Crash Statistics

Report Generated May, 2023

	Count	Highest Time Period(s)	Highest Day(s)	Highest Month(s)
Fatal Crashes	3	3:00am - 5:59am	Monday • Saturday	February • January
Resulting Fatalities	3	9:00am - 11:59am (66%)	(66%)	(66%)
Serious Injury Crashes	16	9:00am - 11:59am (25%)	Sunday (31%)	June • November (38%)



House District 19 Speed-Related Crashes

Interstate Crashes Non-interstate Crashes
 ● Fatal ● Fatal
 ⊕ Serious Injury ⊕ Serious Injury

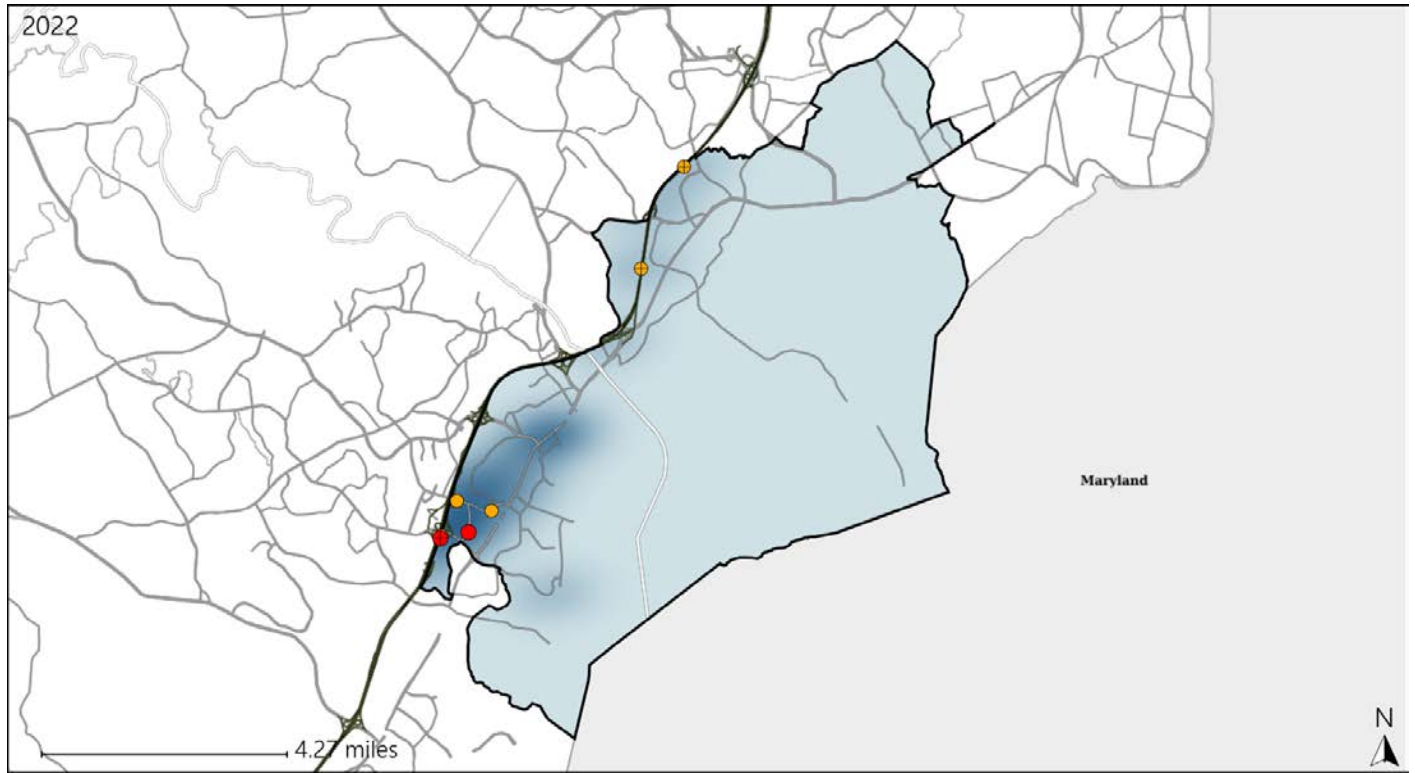
The blue gradient represents the density of all speed-related crashes.

Available Crash Data - Calendar Year (CY)	CY 2019	CY 2020	CY 2021	CY 2022
Total Crashes	1285	949	1196	1205
Fatal Crashes	2	7	5	8
Injury Crashes	356	256	361	342
Speed-Related Fatal Crashes	2	5	2	3
Percent of Speed-Related Fatal Crashes to Total Fatal Crashes	100%	71%	40%	38%
Speed-Related Injury Crashes	99	77	123	110
Percent of Speed-Related Injury Crashes to Total Injury Crashes	28%	30%	34%	32%

Virginia House District 19 Unrestrained Crash Statistics

Report Generated May, 2023

	Count	Highest Time Period(s)	Highest Day(s)	Highest Month(s)
Fatal Crashes	2	9:00am - 11:59am	Saturday • Sunday	August • January
Unrestrained Fatalities	2	Midnight - 2:59am (100%)	(100%)	(100%)
Serious Injury Crashes	5	3:00pm - 5:59pm 6:00am - 8:59am (40%)	Friday • Monday (40%)	December • June (80%)



House District 19 Unrestrained-Related Crashes

- | | |
|--------------------|------------------------|
| Interstate Crashes | Non-interstate Crashes |
| ● Fatal | ● Fatal |
| ⊕ Serious Injury | ⊕ Serious Injury |

The blue gradient represents the density of all unrestrained-related crashes.

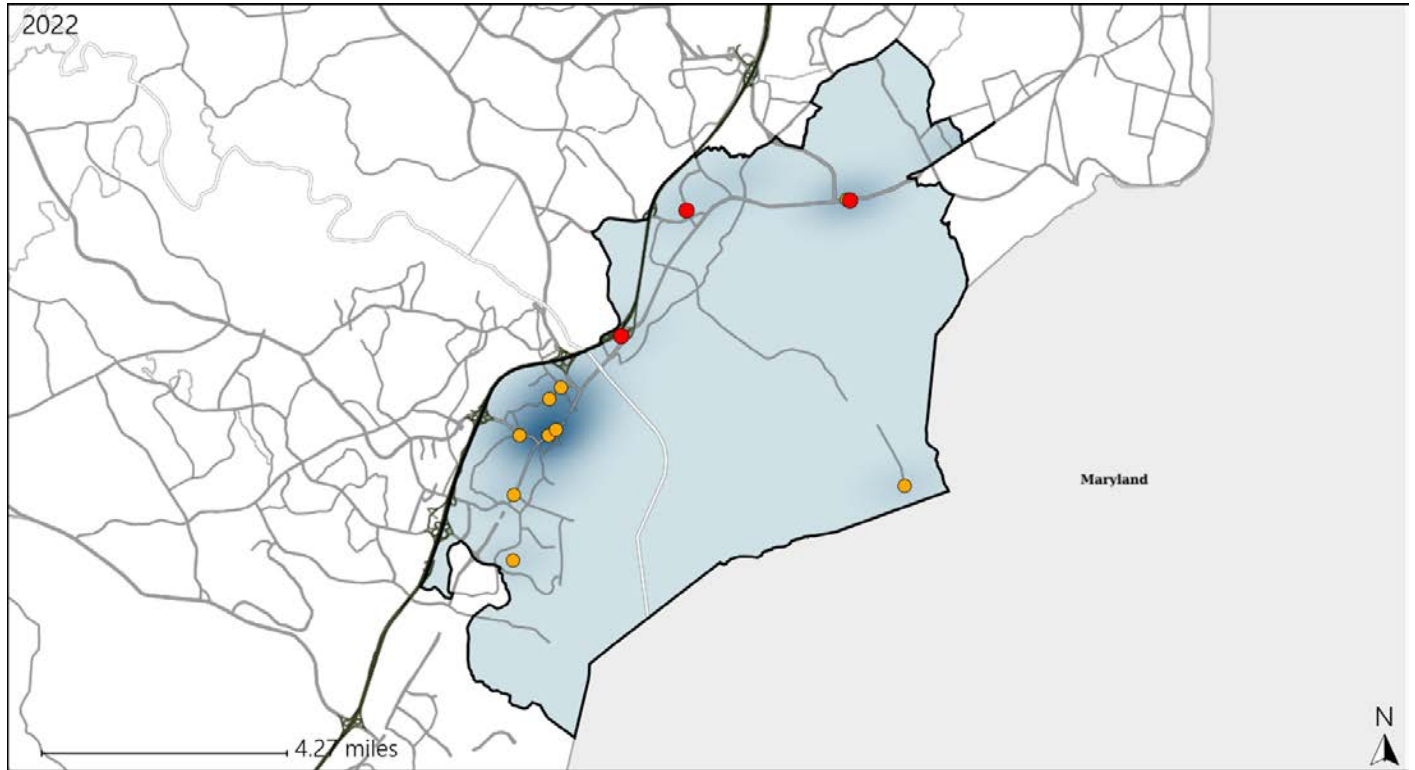


Available Crash Data - Calendar Year (CY)	CY 2019	CY 2020	CY 2021	CY 2022
Total Crashes	1285	949	1196	1205
Fatalities	2	7	5	8
Injuries	569	445	645	550
Unrestrained Fatalities	0	3	0	2
Percent of Unrestrained Fatalities to Total Fatalities	0%	43%	0%	25%
Unrestrained Injuries	14	16	29	17
Percent of Unrestrained Injuries to Total Injuries	2%	4%	4%	3%

Virginia House District 19 Pedestrian Crash Statistics

Report Generated May, 2023

	Count	Highest Time Period(s)	Highest Day(s)	Highest Month(s)
Fatal Crashes	3	3:00pm - 5:59pm	Friday - Thursday	October
Pedestrian Fatalities	3	6:00am - 8:59am (66%)	(66%)	(67%)
Serious Injury Crashes	9	9:00pm - 11:59pm (44%)	Wednesday (33%)	June - September (44%)



House District 19 Pedestrian-Related Crashes

Interstate Crashes

Non-interstate Crashes

- Fatal
- Serious Injury

- Fatal
- Serious Injury

The blue gradient represents the density of all pedestrian-related crashes.

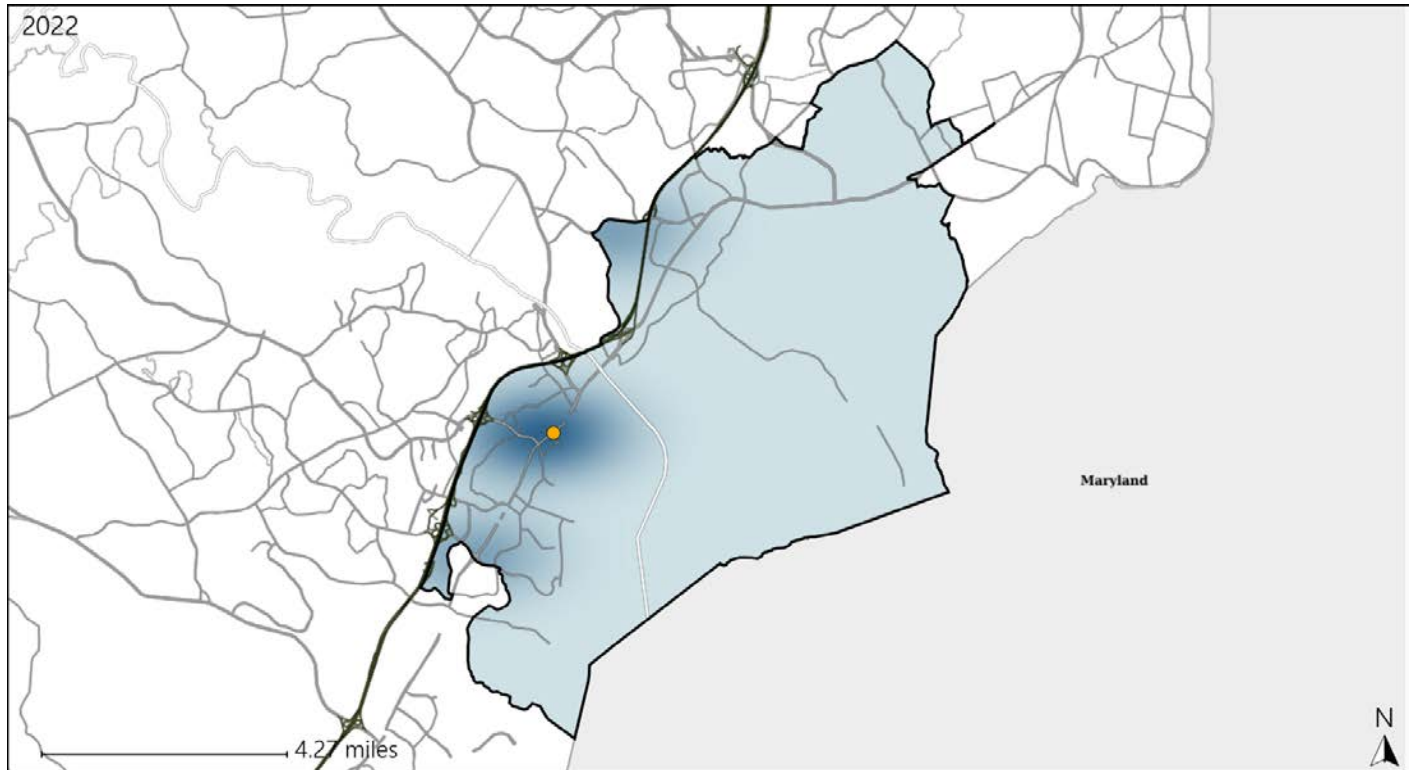


Available Crash Data - Calendar Year (CY)	CY 2019	CY 2020	CY 2021	CY 2022
Total Crashes	1285	949	1196	1205
Fatal Crashes	2	7	5	8
Injury Crashes	356	256	361	342
Pedestrian-Related Fatal Crashes	0	4	3	3
Percent of Pedestrian-Related Fatal Crashes to Total Fatal Crashes	0%	57%	60%	38%
Pedestrian-Related Injury Crashes	18	9	13	24
Percent of Pedestrian-Related Injury Crashes to Total Injury Crashes	5%	4%	4%	7%

Virginia House District 19 Bicycle Crash Statistics

Report Generated May, 2023

	Count	Highest Time Period(s)	Highest Day(s)	Highest Month(s)
Fatal Crashes	0	-	-	-
Bicycle Fatalities	0	-	-	-
Serious Injury Crashes	1	6:00pm - 8:59pm (100%)	Monday (100%)	July (100%)



House District 19 Bicycle-Related Crashes

Interstate Crashes Non-interstate Crashes
 ● Fatal ● Fatal
 ● Serious Injury ● Serious Injury

The blue gradient represents the density of all bicycle-related crashes.

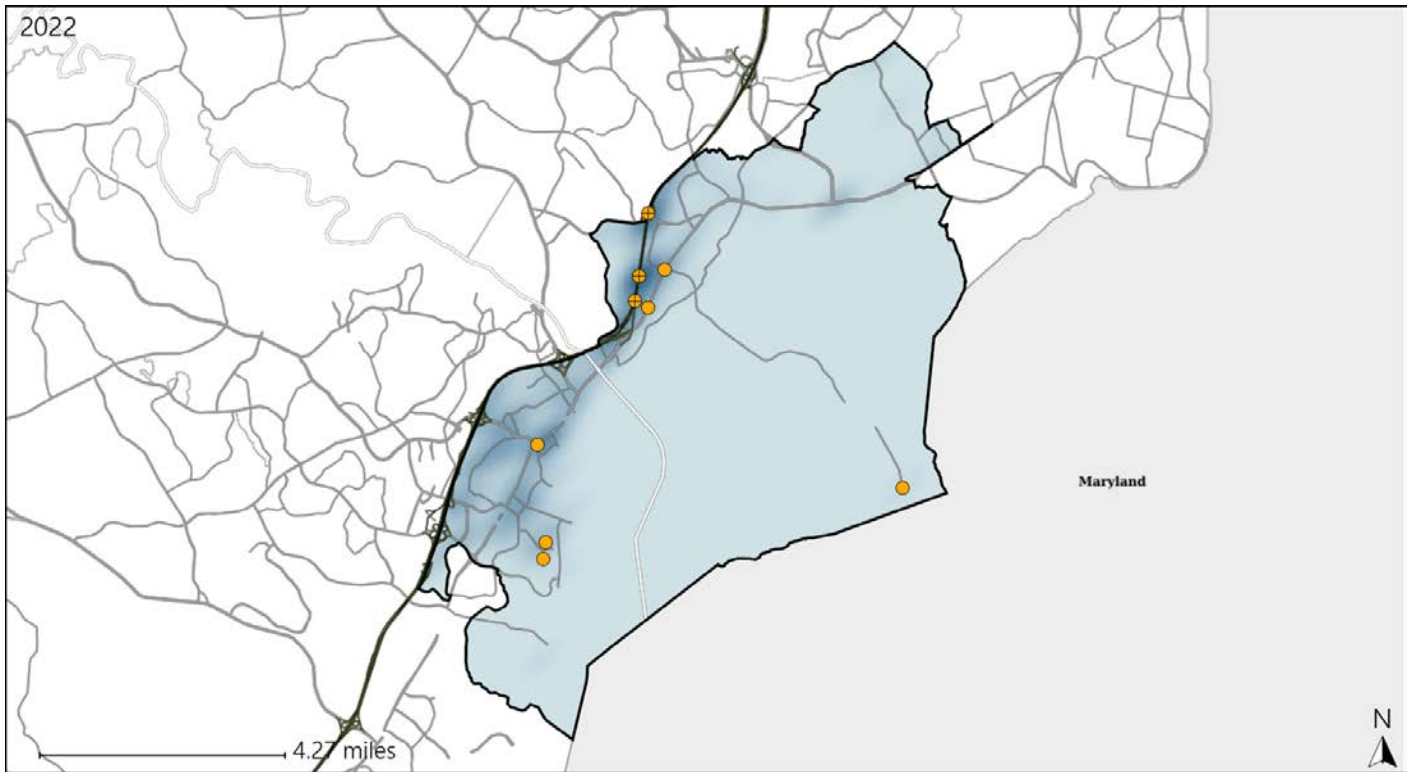


Available Crash Data - Calendar Year (CY)	CY 2019	CY 2020	CY 2021	CY 2022
Total Crashes	1285	949	1196	1205
Fatal Crashes	2	7	5	8
Injury Crashes	356	256	361	342
Bicycle-Related Fatal Crashes	0	0	0	0
Percent of Bicycle-Related Fatal Crashes to Total Fatal Crashes	0%	0%	0%	0%
Bicycle-Related Injury Crashes	1	3	4	4
Percent of Bicycle-Related Injury Crashes to Total Injury Crashes	0%	1%	1%	1%

Virginia House District 19 Distracted Driving Crash Statistics

Report Generated May, 2023

	Count	Highest Time Period(s)	Highest Day(s)	Highest Month(s)
Fatal Crashes	0	-	-	-
Resulting Fatalities	0	-	-	-
Serious Injury Crashes	9	3:00am - 5:59am 6:00pm - 8:59pm (44%)	Sunday (33%)	November (33%)



House District 19 Distracted Driving-Related Crashes

- | | |
|--------------------|------------------------|
| Interstate Crashes | Non-interstate Crashes |
| ● Fatal | ● Fatal |
| ⊕ Serious Injury | ● Serious Injury |

The blue gradient represents the density of all distracted driving-related crashes.



Available Crash Data - Calendar Year (CY)	CY 2019	CY 2020	CY 2021	CY 2022
Total Crashes	1285	949	1196	1205
Fatal Crashes	2	7	5	8
Injury Crashes	356	256	361	342
Distracted Driving-Related Fatal Crashes	1	1	0	0
Percent of Distracted Driving-Related Fatal Crashes to Total Fatal Crashes	50%	14%	0%	0%
Distracted Driving-Related Injury Crashes	70	55	98	55
Percent of Distracted Driving-Related Injury Crashes to Total Injury Crashes	20%	21%	27%	16%