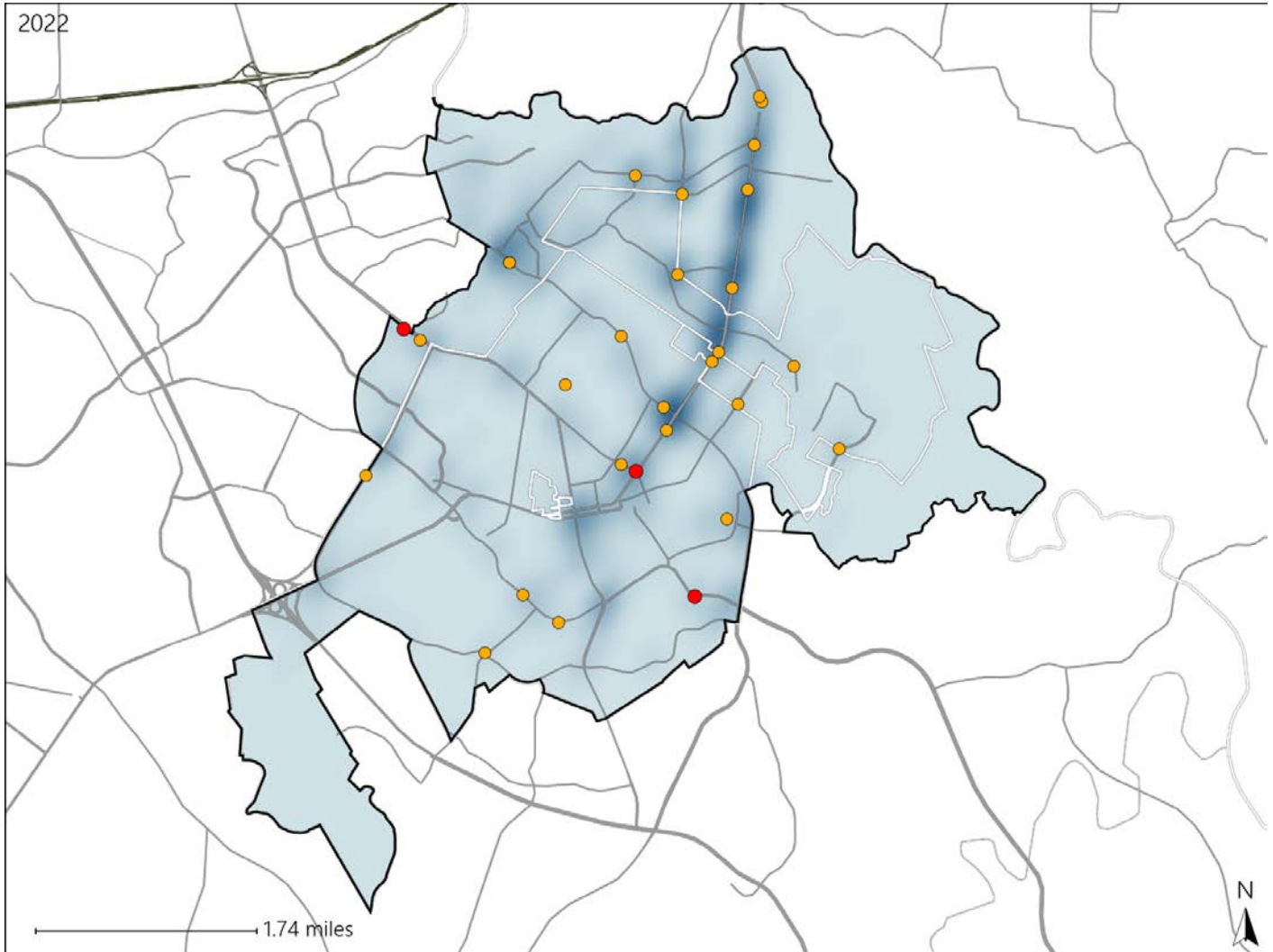


Virginia House District 20 Crash Statistics

Report Generated May, 2023

	Count	Highest Time Period(s)	Highest Day(s)	Highest Month(s)
Fatal Crashes	3	9:00pm - 11:59pm	Friday • Saturday	December • February
Resulting Fatalities	3	Midnight - 2:59am (66%)	(66%)	(66%)
Serious Injury Crashes	26	9:00pm - 11:59pm (27%)	Sunday (27%)	April (27%)



House District 20 Crashes

Interstate Crashes

- Fatal
- Serious Injury

Non-interstate Crashes

- Fatal
- Serious Injury

The blue gradient represents the density of all crashes.

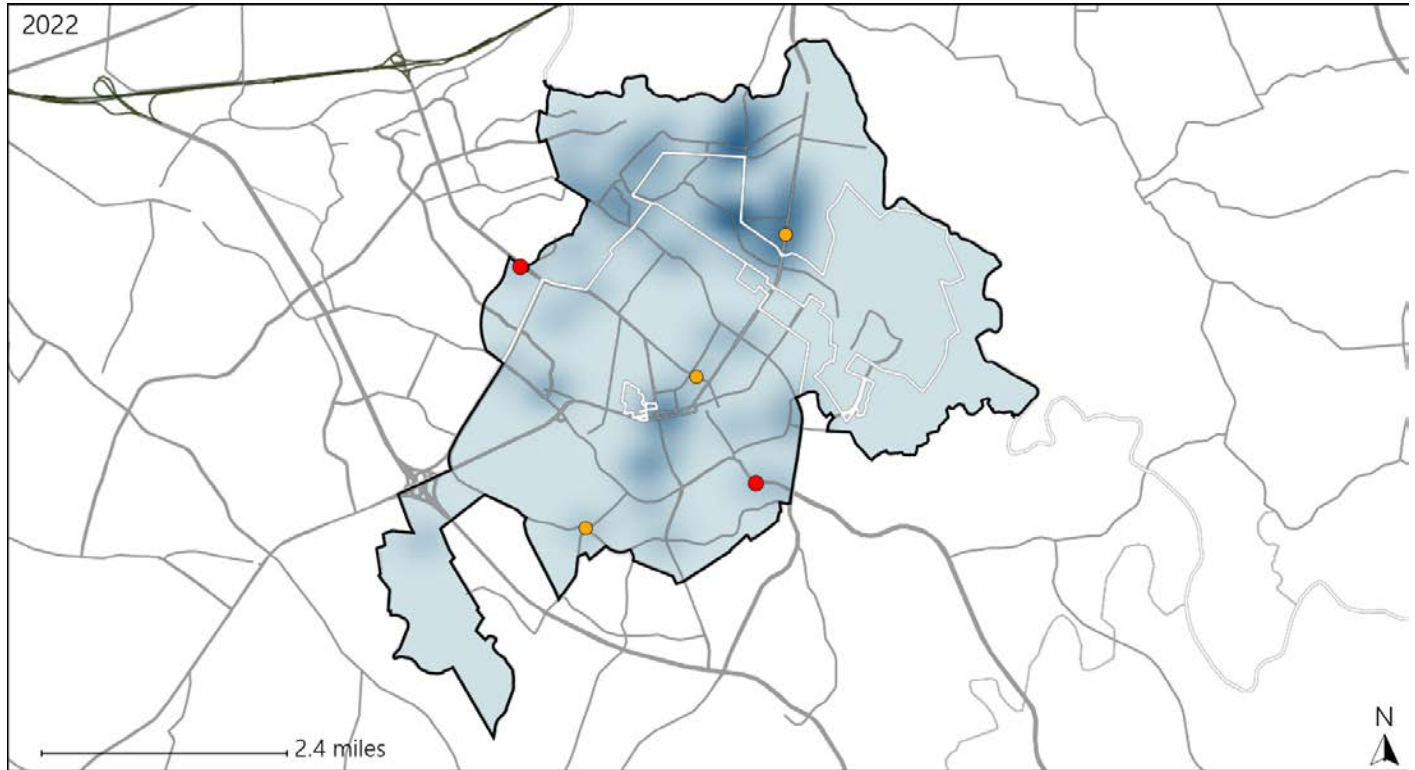


Available Crash Data - Calendar Year (CY)	CY 2019	CY 2020	CY 2021	CY 2022
Total Crashes	732	662	668	753
Fatal Crashes	1	1	3	3
Injury Crashes	394	344	352	424

Virginia House District 20 Alcohol Crash Statistics

Report Generated May, 2023

	Count	Highest Time Period(s)	Highest Day(s)	Highest Month(s)
Fatal Crashes	2	9:00pm - 11:59pm	Saturday • Tuesday	December • February
Resulting Fatalities	2	Midnight - 2:59am (100%)	(100%)	(100%)
Serious Injury Crashes	3	9:00pm - 11:59pm (67%)	Friday • Saturday (66%)	April • December (66%)



House District 20 Alcohol-Related Crashes

Interstate Crashes Non-interstate Crashes
 ● Fatal ● Fatal
 ⊕ Serious Injury ⊕ Serious Injury

The blue gradient represents the density of all alcohol-related crashes.

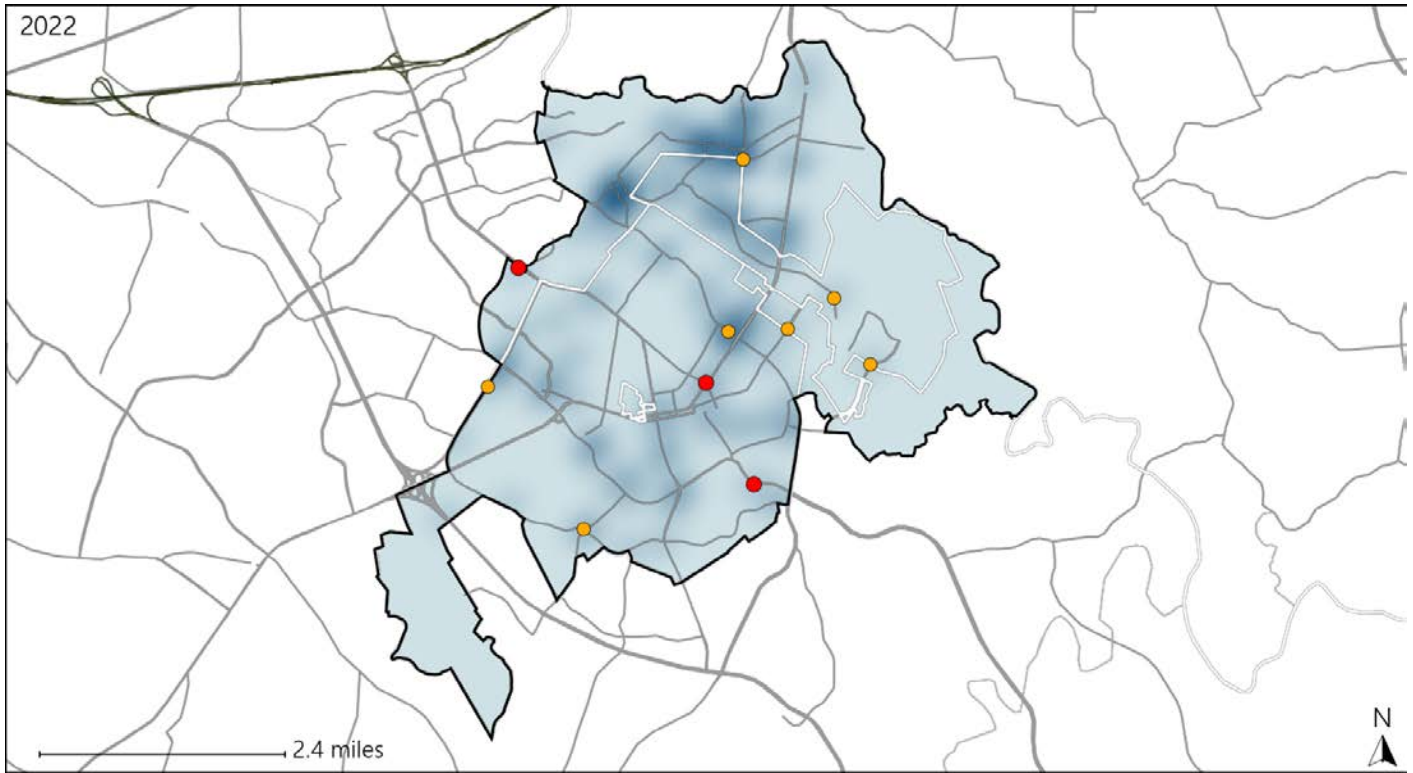


Available Crash Data - Calendar Year (CY)	CY 2019	CY 2020	CY 2021	CY 2022
Total Crashes	732	662	668	753
Fatal Crashes	1	1	3	3
Injury Crashes	394	344	352	424
Alcohol-Related Fatal Crashes	0	1	1	2
Percent of Alcohol-Related Fatal Crashes to Total Fatal Crashes	0%	100%	33%	67%
Alcohol-Related Injury Crashes	36	30	28	39
Percent of Alcohol-Related Injury Crashes to Total Injury Crashes	9%	9%	8%	9%

Virginia House District 20 Speed Crash Statistics

Report Generated May, 2023

	Count	Highest Time Period(s)	Highest Day(s)	Highest Month(s)
Fatal Crashes	3	9:00pm - 11:59pm	Friday • Saturday	December • February
Resulting Fatalities	3	Midnight - 2:59am (66%)	(66%)	(66%)
Serious Injury Crashes	7	6:00pm - 8:59pm 9:00pm - 11:59pm (58%)	Friday (43%)	April (43%)



House District 20 Speed-Related Crashes

Interstate Crashes Non-interstate Crashes
 ● Fatal ● Fatal
 ⊕ Serious Injury ⊕ Serious Injury

The blue gradient represents the density of all speed-related crashes.

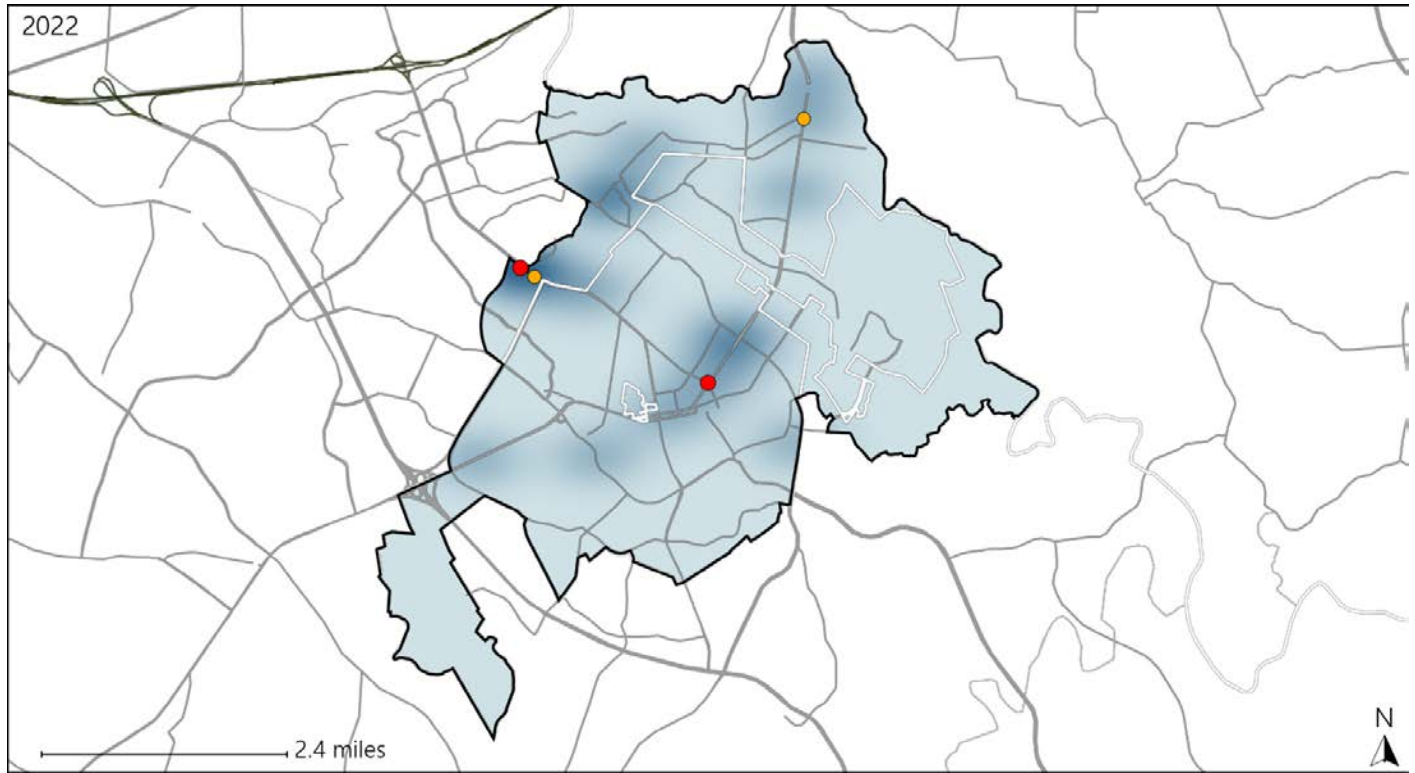


Available Crash Data - Calendar Year (CY)	CY 2019	CY 2020	CY 2021	CY 2022
Total Crashes	732	662	668	753
Fatal Crashes	1	1	3	3
Injury Crashes	394	344	352	424
Speed-Related Fatal Crashes	1	1	1	3
Percent of Speed-Related Fatal Crashes to Total Fatal Crashes	100%	100%	33%	100%
Speed-Related Injury Crashes	78	79	66	71
Percent of Speed-Related Injury Crashes to Total Injury Crashes	20%	23%	19%	17%

Virginia House District 20 Unrestrained Crash Statistics

Report Generated May, 2023

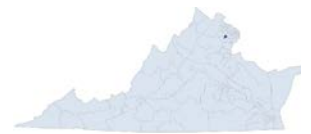
	Count	Highest Time Period(s)	Highest Day(s)	Highest Month(s)
Fatal Crashes	2	9:00pm - 11:59pm	Friday • Tuesday	December • July
Unrestrained Fatalities	2	Noon - 2:59pm (100%)	(100%)	(100%)
Serious Injury Crashes	2	6:00pm - 8:59pm 9:00pm - 11:59pm (100%)	Monday • Tuesday (100%)	April • August (100%)



House District 20 Unrestrained-Related Crashes

- | | |
|--------------------|------------------------|
| Interstate Crashes | Non-interstate Crashes |
| ● Fatal | ● Fatal |
| ⊕ Serious Injury | ⊕ Serious Injury |

The blue gradient represents the density of all unrestrained-related crashes.

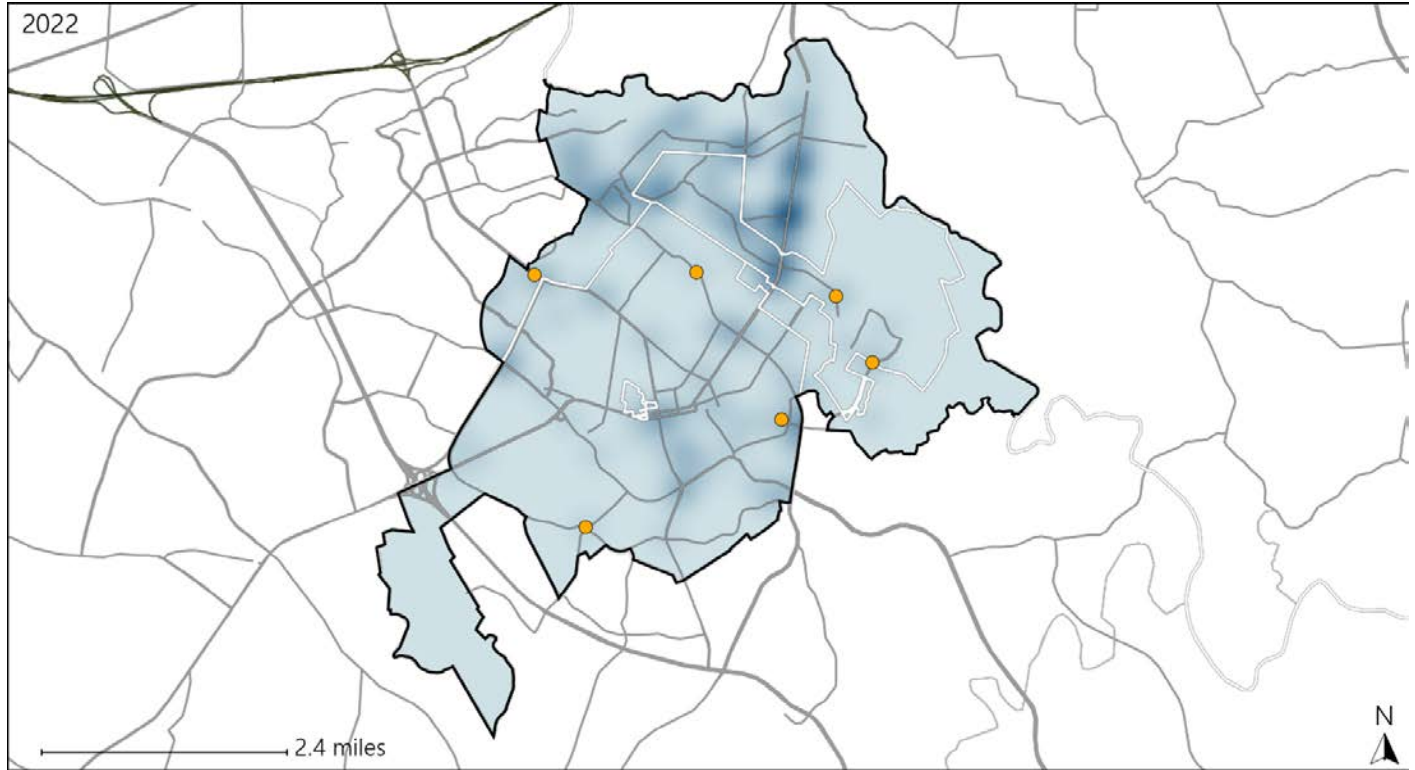


Available Crash Data - Calendar Year (CY)	CY 2019	CY 2020	CY 2021	CY 2022
Total Crashes	732	662	668	753
Fatalities	1	1	3	3
Injuries	667	579	632	790
Unrestrained Fatalities	0	1	1	2
Percent of Unrestrained Fatalities to Total Fatalities	0%	100%	33%	67%
Unrestrained Injuries	11	23	20	15
Percent of Unrestrained Injuries to Total Injuries	2%	4%	3%	2%

Virginia House District 20 Distracted Driving Crash Statistics

Report Generated May, 2023

	Count	Highest Time Period(s)	Highest Day(s)	Highest Month(s)
Fatal Crashes	0	-	-	-
Resulting Fatalities	0	-	-	-
Serious Injury Crashes	6	9:00pm - 11:59pm (50%)	Friday (33%)	April - September (66%)



House District 20 Distracted Driving-Related Crashes

- | | |
|--|--|
| Interstate Crashes | Non-interstate Crashes |
| ● Fatal | ● Fatal |
| ● Serious Injury | ● Serious Injury |

The blue gradient represents the density of all distracted driving-related crashes.



Available Crash Data - Calendar Year (CY)	CY 2019	CY 2020	CY 2021	CY 2022
Total Crashes	732	662	668	753
Fatal Crashes	1	1	3	3
Injury Crashes	394	344	352	424
Distracted Driving-Related Fatal Crashes	1	0	0	0
Percent of Distracted Driving-Related Fatal Crashes to Total Fatal Crashes	100%	0%	0%	0%
Distracted Driving-Related Injury Crashes	80	81	63	98
Percent of Distracted Driving-Related Injury Crashes to Total Injury Crashes	20%	24%	18%	23%