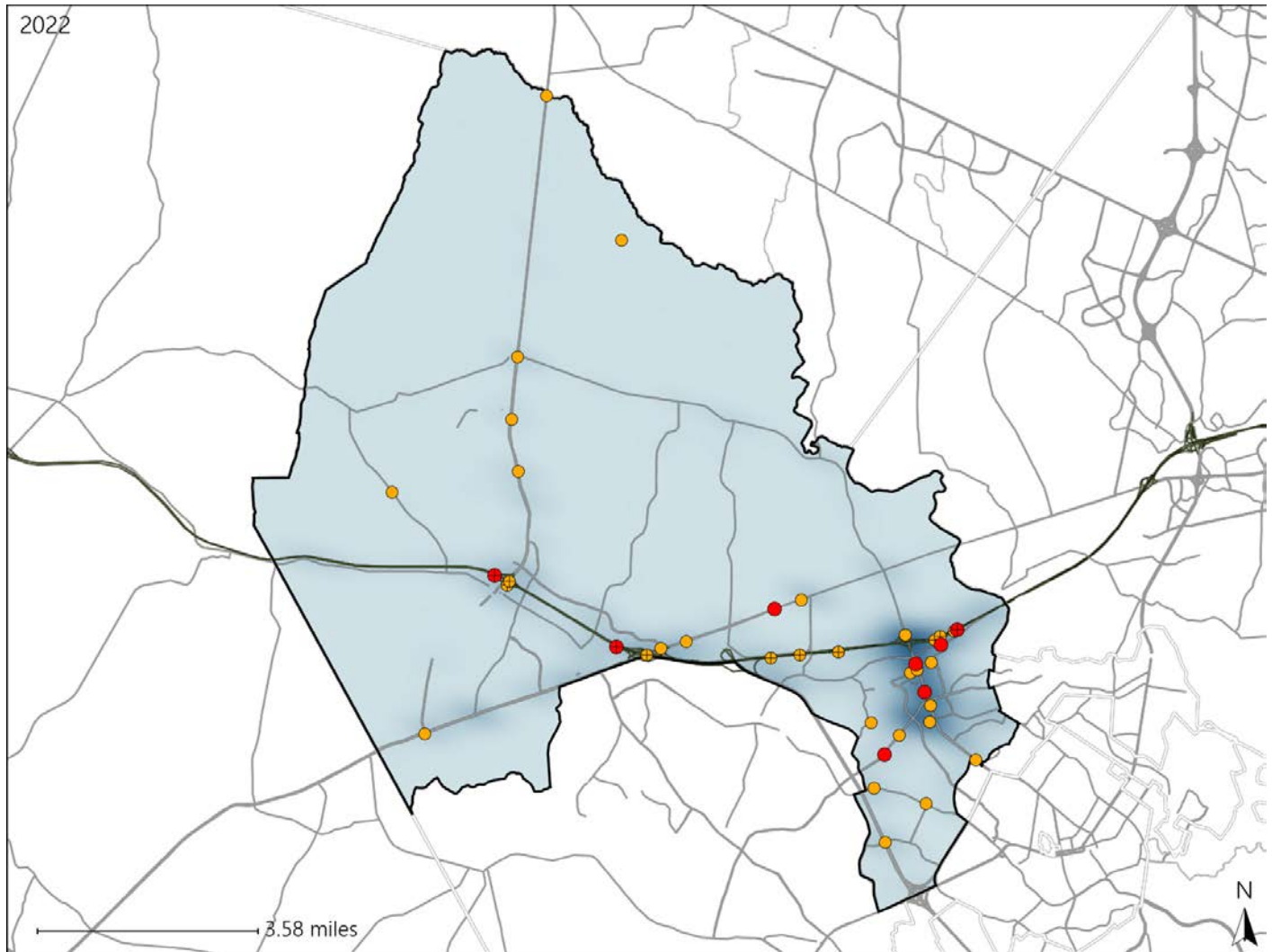


Virginia House District 21 Crash Statistics

Report Generated May, 2023

	Count	Highest Time Period(s)	Highest Day(s)	Highest Month(s)
Fatal Crashes	8	9:00pm - 11:59pm	Monday	September
Resulting Fatalities	8	(38%)	(38%)	(38%)
Serious Injury Crashes	33	6:00pm - 8:59pm Noon - 2:59pm	Friday	November
		(36%)	(24%)	(18%)



House District 21 Crashes

Interstate Crashes

- Fatal
- Serious Injury

Non-interstate Crashes

- Fatal
- Serious Injury

The blue gradient represents the density of all crashes.

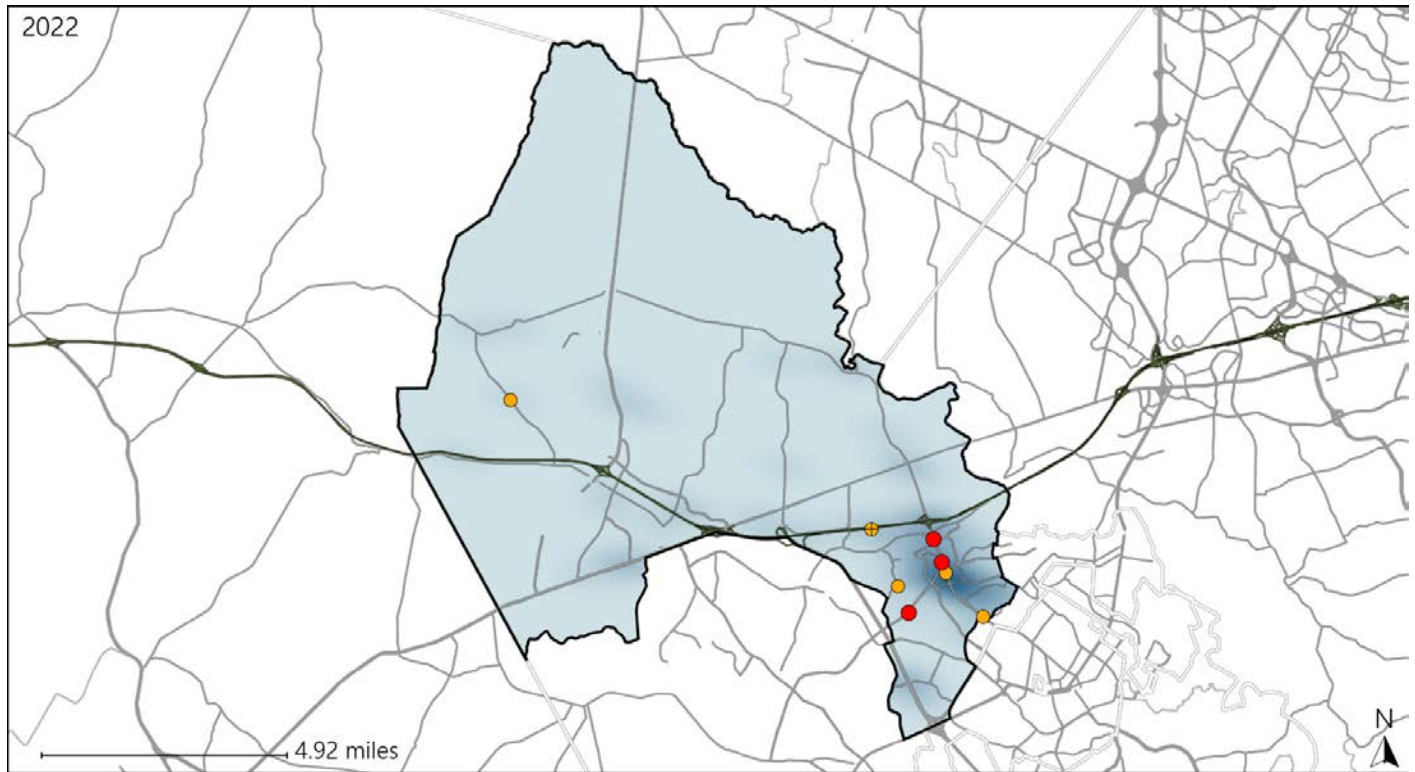


Available Crash Data - Calendar Year (CY)	CY 2019	CY 2020	CY 2021	CY 2022
Total Crashes	1341	1021	1184	1352
Fatal Crashes	3	4	5	8
Injury Crashes	431	262	321	327

Virginia House District 21 Alcohol Crash Statistics

Report Generated May, 2023

	Count	Highest Time Period(s)	Highest Day(s)	Highest Month(s)
Fatal Crashes	3	9:00pm - 11:59pm	Friday • Saturday	January • October
Resulting Fatalities	3	(67%)	(66%)	(66%)
Serious Injury Crashes	5	6:00pm - 8:59pm 9:00pm - 11:59pm	Tuesday	April • January
		(80%)	(40%)	(40%)



House District 21 Alcohol-Related Crashes

Interstate Crashes Non-interstate Crashes

- Fatal
- Serious Injury
- Fatal
- Serious Injury

The blue gradient represents the density of all alcohol-related crashes.

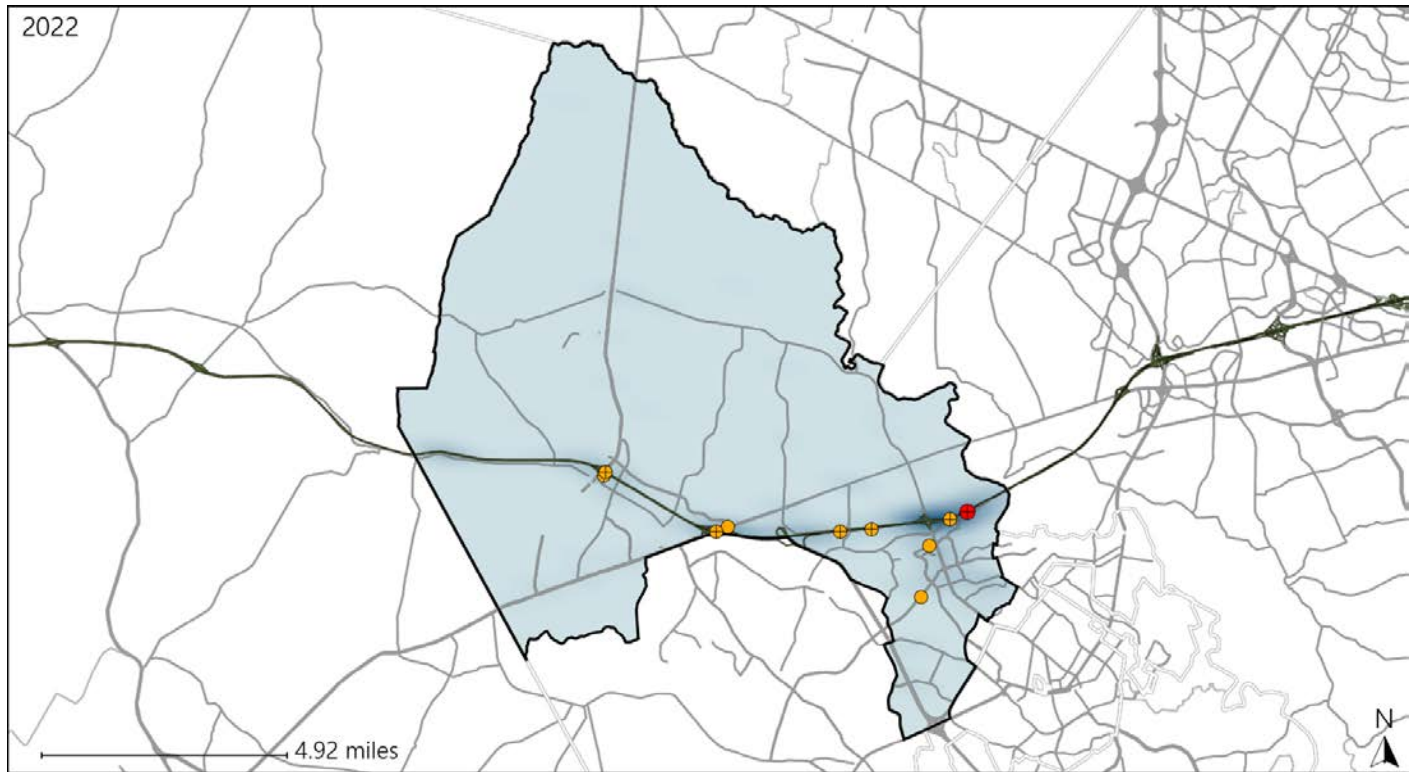


Available Crash Data - Calendar Year (CY)	CY 2019	CY 2020	CY 2021	CY 2022
Total Crashes	1341	1021	1184	1352
Fatal Crashes	3	4	5	8
Injury Crashes	431	262	321	327
Alcohol-Related Fatal Crashes	1	1	1	3
Percent of Alcohol-Related Fatal Crashes to Total Fatal Crashes	33%	25%	20%	38%
Alcohol-Related Injury Crashes	30	24	26	17
Percent of Alcohol-Related Injury Crashes to Total Injury Crashes	7%	9%	8%	5%

Virginia House District 21 Speed Crash Statistics

Report Generated May, 2023

	Count	Highest Time Period(s)	Highest Day(s)	Highest Month(s)
Fatal Crashes	1	Midnight - 2:59am	Monday	June
Resulting Fatalities	1	(100%)	(100%)	(100%)
Serious Injury Crashes	9	6:00pm - 8:59pm Noon - 2:59pm	Monday - Saturday	April - August
		(66%)	(44%)	(44%)



House District 21 Speed-Related Crashes

Interstate Crashes Non-interstate Crashes
 ● Fatal ● Fatal
 ⊕ Serious Injury ⊕ Serious Injury

The blue gradient represents the density of all speed-related crashes.



Available Crash Data - Calendar Year (CY)	CY 2019	CY 2020	CY 2021	CY 2022
Total Crashes	1341	1021	1184	1352
Fatal Crashes	3	4	5	8
Injury Crashes	431	262	321	327
Speed-Related Fatal Crashes	1	2	2	1
Percent of Speed-Related Fatal Crashes to Total Fatal Crashes	33%	50%	40%	13%
Speed-Related Injury Crashes	71	54	72	62
Percent of Speed-Related Injury Crashes to Total Injury Crashes	16%	21%	22%	19%

Virginia House District 21 Unrestrained Crash Statistics

Report Generated May, 2023

	Count	Highest Time Period(s)	Highest Day(s)	Highest Month(s)
Fatal Crashes	1	Midnight - 2:59am	Monday	June
Unrestrained Fatalities	1	(100%)	(100%)	(100%)
Serious Injury Crashes	5	6:00pm - 8:59pm	Friday	April
		(40%)	(60%)	(40%)



House District 21 Unrestrained-Related Crashes

- | | |
|--------------------|------------------------|
| Interstate Crashes | Non-interstate Crashes |
| Fatal | Fatal |
| Serious Injury | Serious Injury |

The blue gradient represents the density of all unrestrained-related crashes.

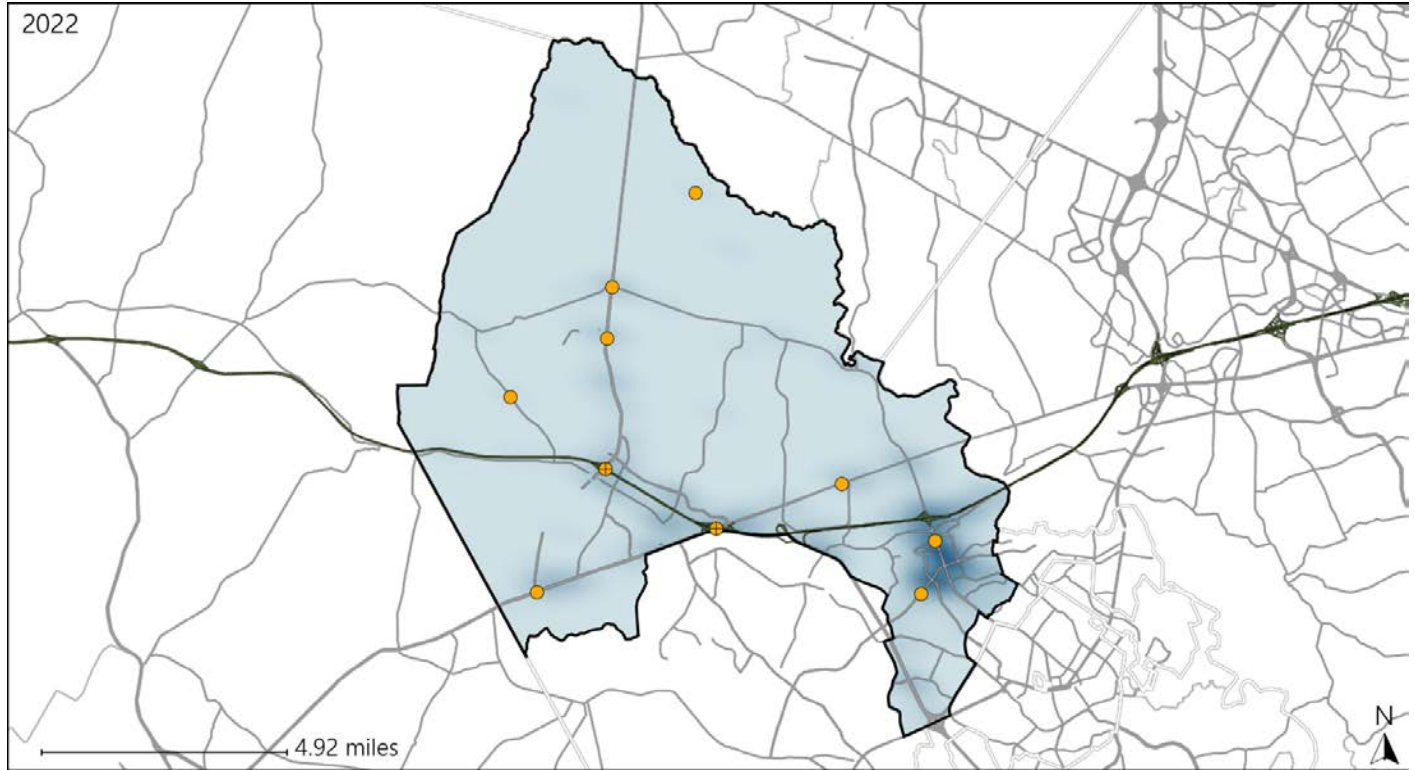


Available Crash Data - Calendar Year (CY)	CY 2019	CY 2020	CY 2021	CY 2022
Total Crashes	1341	1021	1184	1352
Fatalities	4	4	5	8
Injuries	691	443	539	573
Unrestrained Fatalities	0	0	1	1
Percent of Unrestrained Fatalities to Total Fatalities	0%	0%	20%	13%
Unrestrained Injuries	26	22	27	21
Percent of Unrestrained Injuries to Total Injuries	4%	5%	5%	4%

Virginia House District 21 Distracted Driving Crash Statistics

Report Generated May, 2023

	Count	Highest Time Period(s)	Highest Day(s)	Highest Month(s)
Fatal Crashes	0	-	-	-
Resulting Fatalities	0	-	-	-
Serious Injury Crashes	10	6:00pm - 8:59pm (30%)	Saturday • Tuesday (60%)	April (30%)



House District 21 Distracted Driving-Related Crashes

- | | |
|--------------------|------------------------|
| Interstate Crashes | Non-interstate Crashes |
| Fatal | Fatal |
| Serious Injury | Serious Injury |

The blue gradient represents the density of all distracted driving-related crashes.



Available Crash Data - Calendar Year (CY)	CY 2019	CY 2020	CY 2021	CY 2022
Total Crashes	1341	1021	1184	1352
Fatal Crashes	3	4	5	8
Injury Crashes	431	262	321	327
Distracted Driving-Related Fatal Crashes	2	0	0	0
Percent of Distracted Driving-Related Fatal Crashes to Total Fatal Crashes	67%	0%	0%	0%
Distracted Driving-Related Injury Crashes	113	56	76	81
Percent of Distracted Driving-Related Injury Crashes to Total Injury Crashes	26%	21%	24%	25%