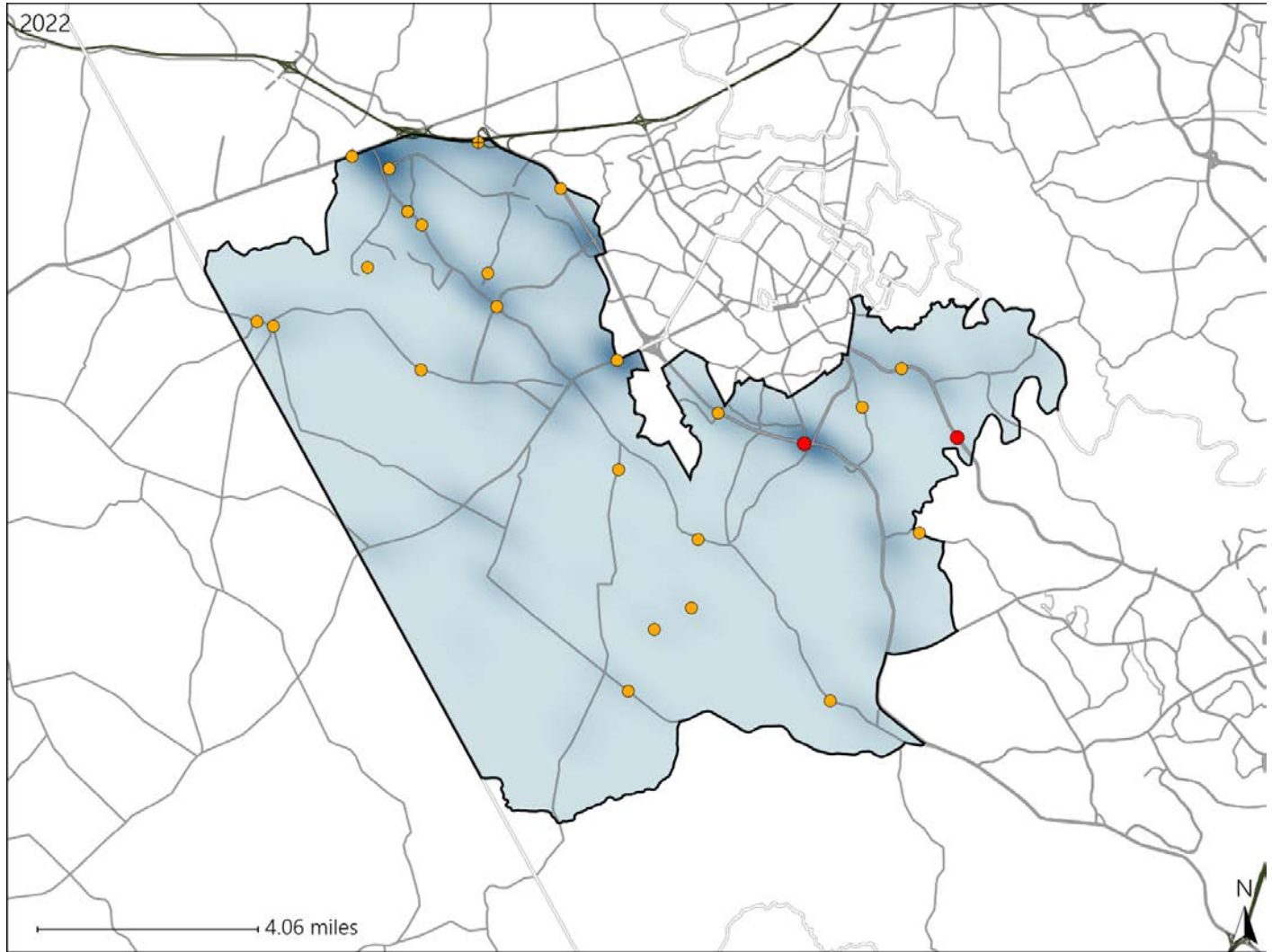


Virginia House District 22 Crash Statistics

Report Generated May, 2023

	Count	Highest Time Period(s)	Highest Day(s)	Highest Month(s)
Fatal Crashes	2	3:00am - 5:59am	Friday	February • November
Resulting Fatalities	2	6:00pm - 8:59pm (100%)	(100%)	(100%)
Serious Injury Crashes	24	3:00pm - 5:59pm (21%)	Monday (25%)	March (25%)



House District 22 Crashes

Interstate Crashes

- Fatal
- Serious Injury

Non-interstate Crashes

- Fatal
- Serious Injury

The blue gradient represents the density of all crashes.

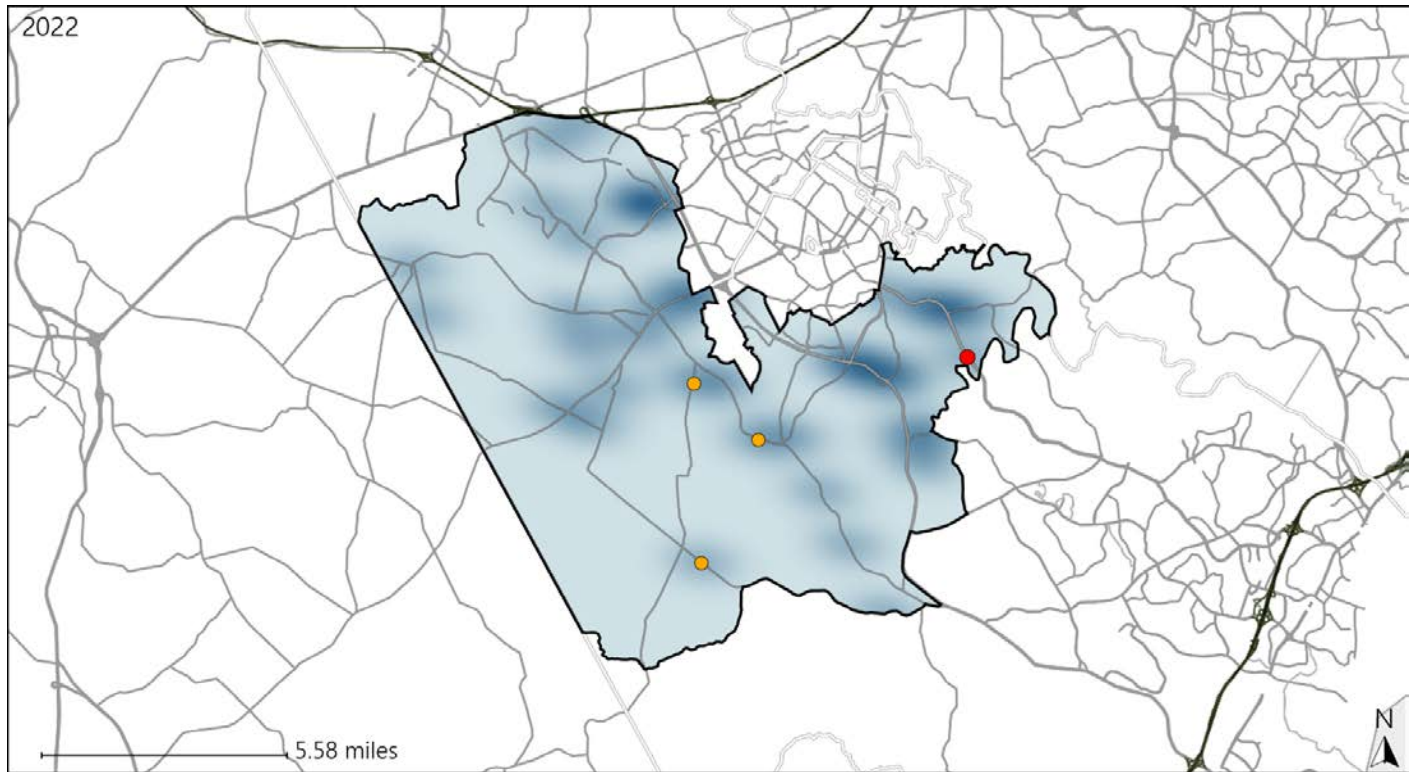


Available Crash Data - Calendar Year (CY)	CY 2019	CY 2020	CY 2021	CY 2022
Total Crashes	878	638	833	855
Fatal Crashes	1	5	9	2
Injury Crashes	241	157	244	247

Virginia House District 22 Alcohol Crash Statistics

Report Generated May, 2023

	Count	Highest Time Period(s)	Highest Day(s)	Highest Month(s)
Fatal Crashes	1	6:00pm - 8:59pm	Friday	November
Resulting Fatalities	1	(100%)	(100%)	(100%)
Serious Injury Crashes	3	3:00pm - 5:59pm 9:00pm - 11:59pm	Monday • Saturday	April • July
		(66%)	(66%)	(66%)



House District 22 Alcohol-Related Crashes

Interstate Crashes Non-interstate Crashes
 ● Fatal ● Fatal
 ⊕ Serious Injury ⊕ Serious Injury

The blue gradient represents the density of all alcohol-related crashes.

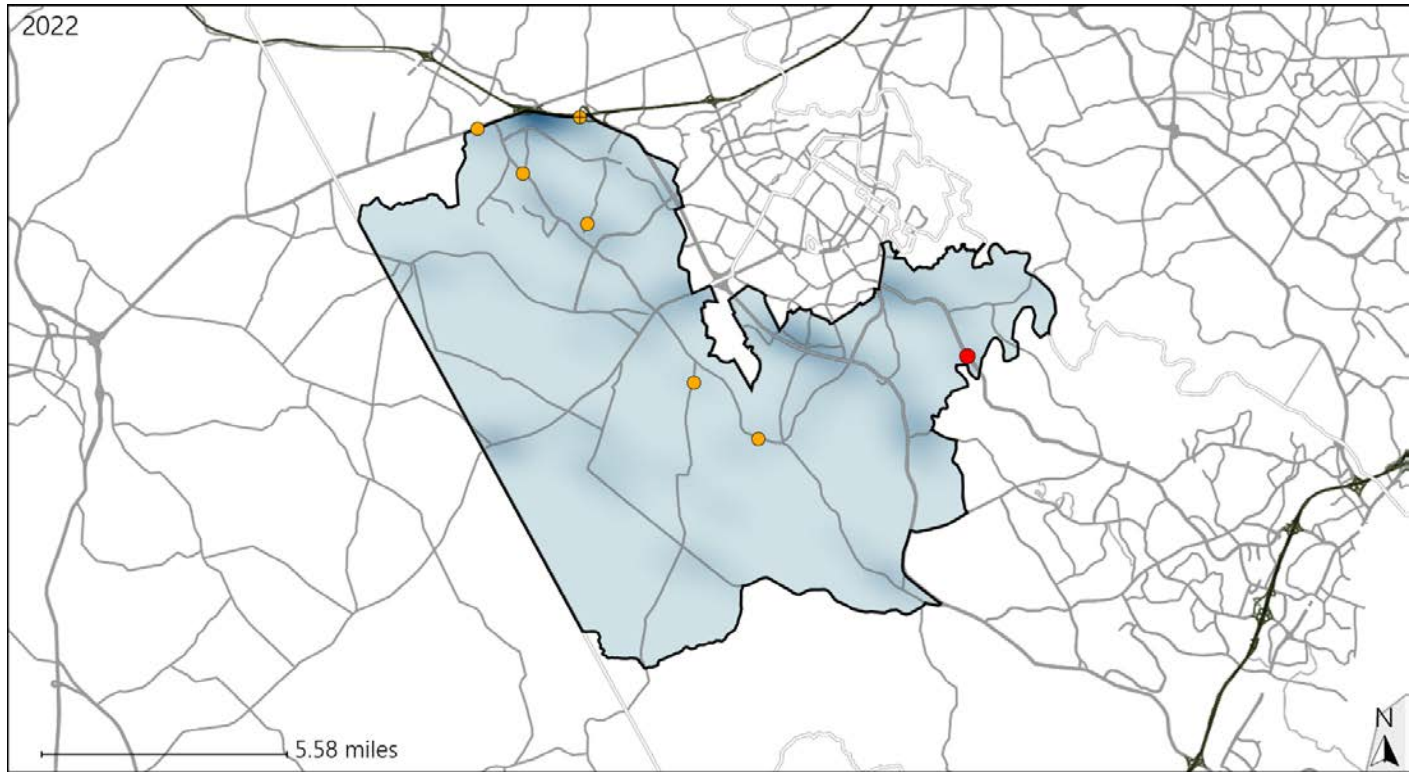


Available Crash Data - Calendar Year (CY)	CY 2019	CY 2020	CY 2021	CY 2022
Total Crashes	878	638	833	855
Fatal Crashes	1	5	9	2
Injury Crashes	241	157	244	247
Alcohol-Related Fatal Crashes	1	1	1	1
Percent of Alcohol-Related Fatal Crashes to Total Fatal Crashes	100%	20%	11%	50%
Alcohol-Related Injury Crashes	19	11	17	13
Percent of Alcohol-Related Injury Crashes to Total Injury Crashes	8%	7%	7%	5%





Virginia House District 22 Speed Crash Statistics

Report Generated May, 2023

	Count	Highest Time Period(s)	Highest Day(s)	Highest Month(s)
Fatal Crashes	1	6:00pm - 8:59pm	Friday	November
Resulting Fatalities	1	(100%)	(100%)	(100%)
Serious Injury Crashes	6	3:00pm - 5:59pm	Tuesday	November
		(50%)	(33%)	(33%)



House District 22 Speed-Related Crashes

Interstate Crashes Non-interstate Crashes
 Fatal  Fatal
 Serious Injury  Serious Injury

The blue gradient represents the density of all speed-related crashes.

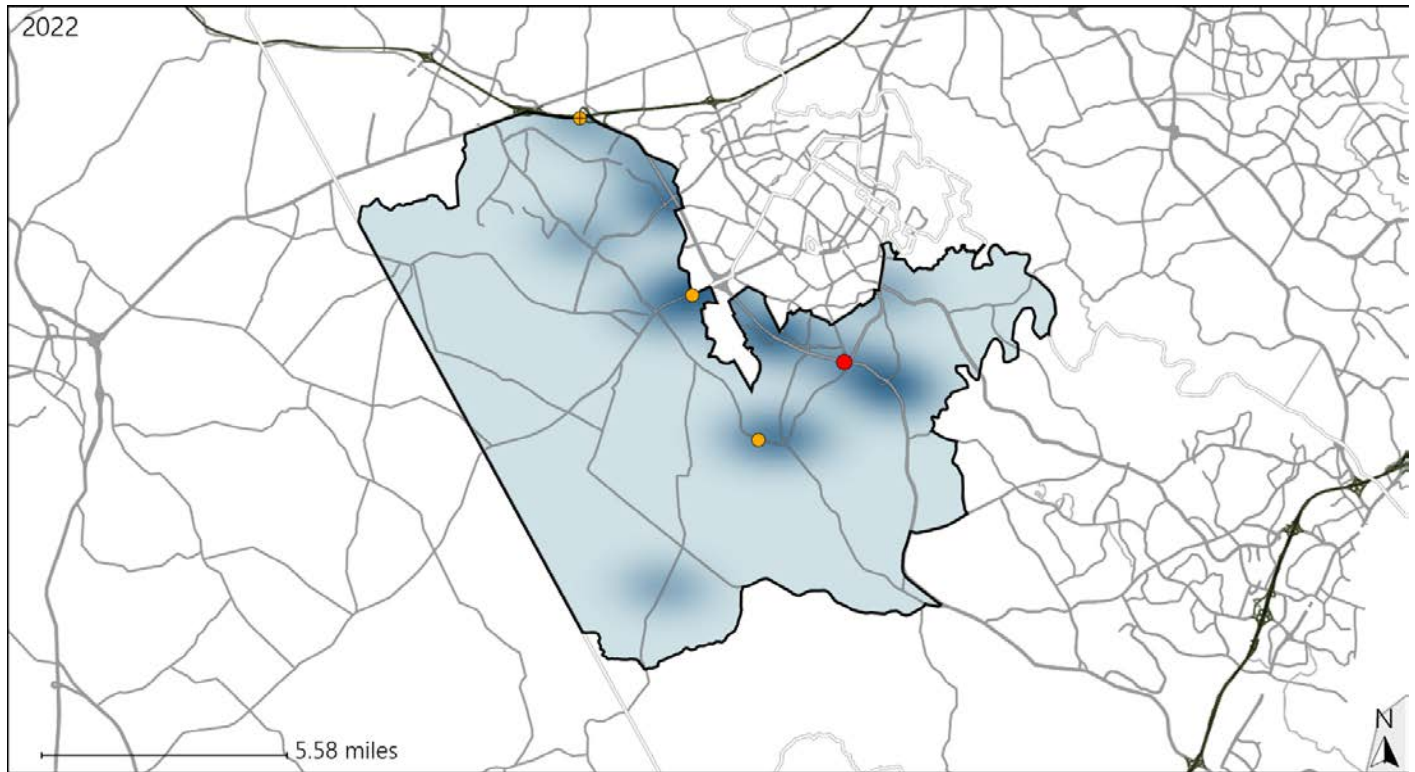


Available Crash Data - Calendar Year (CY)	CY 2019	CY 2020	CY 2021	CY 2022
Total Crashes	878	638	833	855
Fatal Crashes	1	5	9	2
Injury Crashes	241	157	244	247
Speed-Related Fatal Crashes	0	3	4	1
Percent of Speed-Related Fatal Crashes to Total Fatal Crashes	0%	60%	44%	50%
Speed-Related Injury Crashes	62	32	42	45
Percent of Speed-Related Injury Crashes to Total Injury Crashes	26%	20%	17%	18%

Virginia House District 22 Unrestrained Crash Statistics

Report Generated May, 2023

	Count	Highest Time Period(s)	Highest Day(s)	Highest Month(s)
Fatal Crashes	1	3:00am - 5:59am	Friday	February
Unrestrained Fatalities	1	(100%)	(100%)	(100%)
Serious Injury Crashes	3	3:00pm - 5:59pm 9:00am - 11:59am	Friday • Thursday	February • July
		(66%)	(66%)	(66%)



House District 22 Unrestrained-Related Crashes

- | | |
|--|--|
| Interstate Crashes | Non-interstate Crashes |
| ● Fatal | ● Fatal |
| ⊕ Serious Injury | ⊕ Serious Injury |

The blue gradient represents the density of all unrestrained-related crashes.

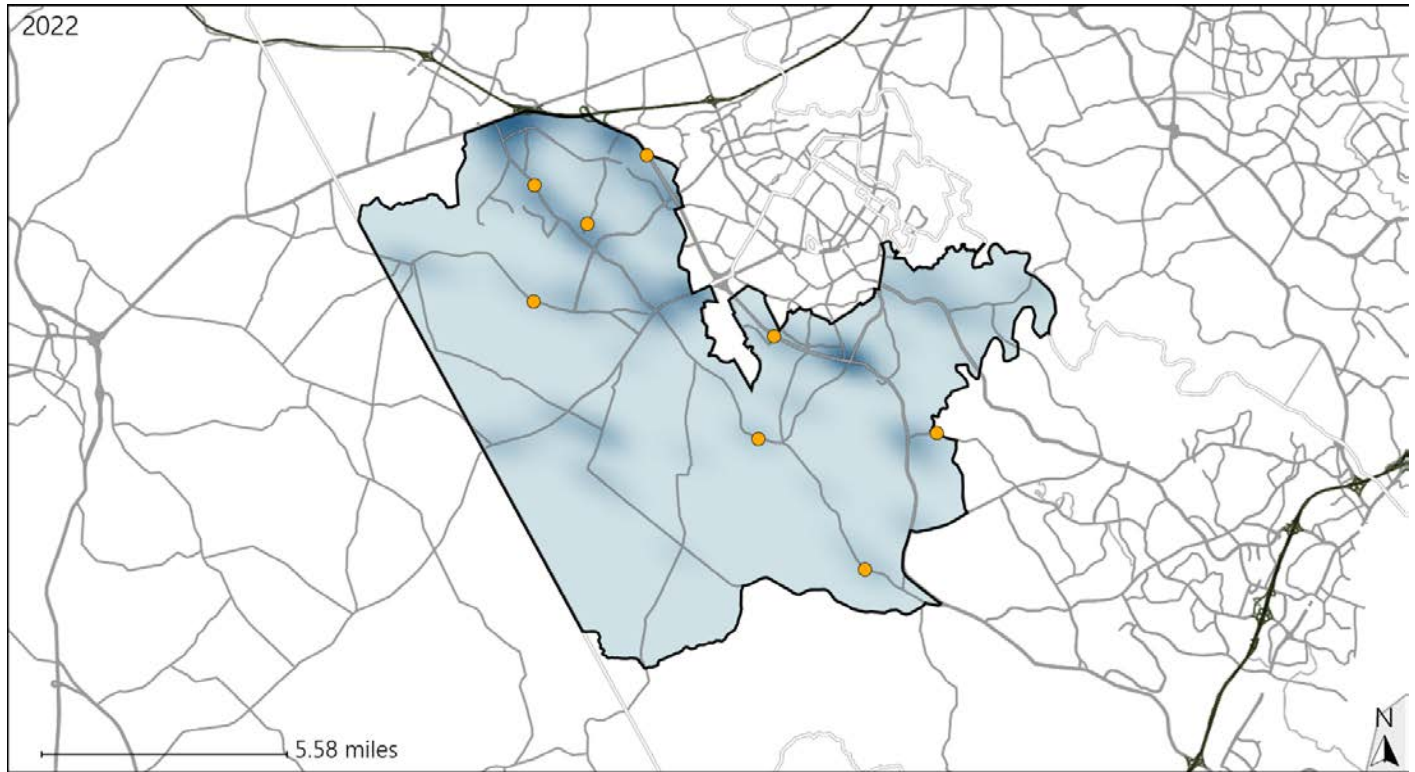


Available Crash Data - Calendar Year (CY)	CY 2019	CY 2020	CY 2021	CY 2022
Total Crashes	878	638	833	855
Fatalities	1	5	9	2
Injuries	393	245	430	406
Unrestrained Fatalities	0	1	2	1
Percent of Unrestrained Fatalities to Total Fatalities	0%	20%	22%	50%
Unrestrained Injuries	14	14	20	18
Percent of Unrestrained Injuries to Total Injuries	4%	6%	5%	4%

Virginia House District 22 Distracted Driving Crash Statistics

Report Generated May, 2023

	Count	Highest Time Period(s)	Highest Day(s)	Highest Month(s)
Fatal Crashes	0	-	-	-
Resulting Fatalities	0	-	-	-
Serious Injury Crashes	8	3:00pm - 5:59pm (38%)	Monday + Tuesday (50%)	March (38%)



House District 22 Distracted Driving-Related Crashes

- | | |
|--|--|
| Interstate Crashes | Non-interstate Crashes |
| ● Fatal | ● Fatal |
| ● Serious Injury | ● Serious Injury |

The blue gradient represents the density of all distracted driving-related crashes.



Available Crash Data - Calendar Year (CY)	CY 2019	CY 2020	CY 2021	CY 2022
Total Crashes	878	638	833	855
Fatal Crashes	1	5	9	2
Injury Crashes	241	157	244	247
Distracted Driving-Related Fatal Crashes	0	1	0	0
Percent of Distracted Driving-Related Fatal Crashes to Total Fatal Crashes	0%	20%	0%	0%
Distracted Driving-Related Injury Crashes	65	47	56	46
Percent of Distracted Driving-Related Injury Crashes to Total Injury Crashes	27%	30%	23%	19%