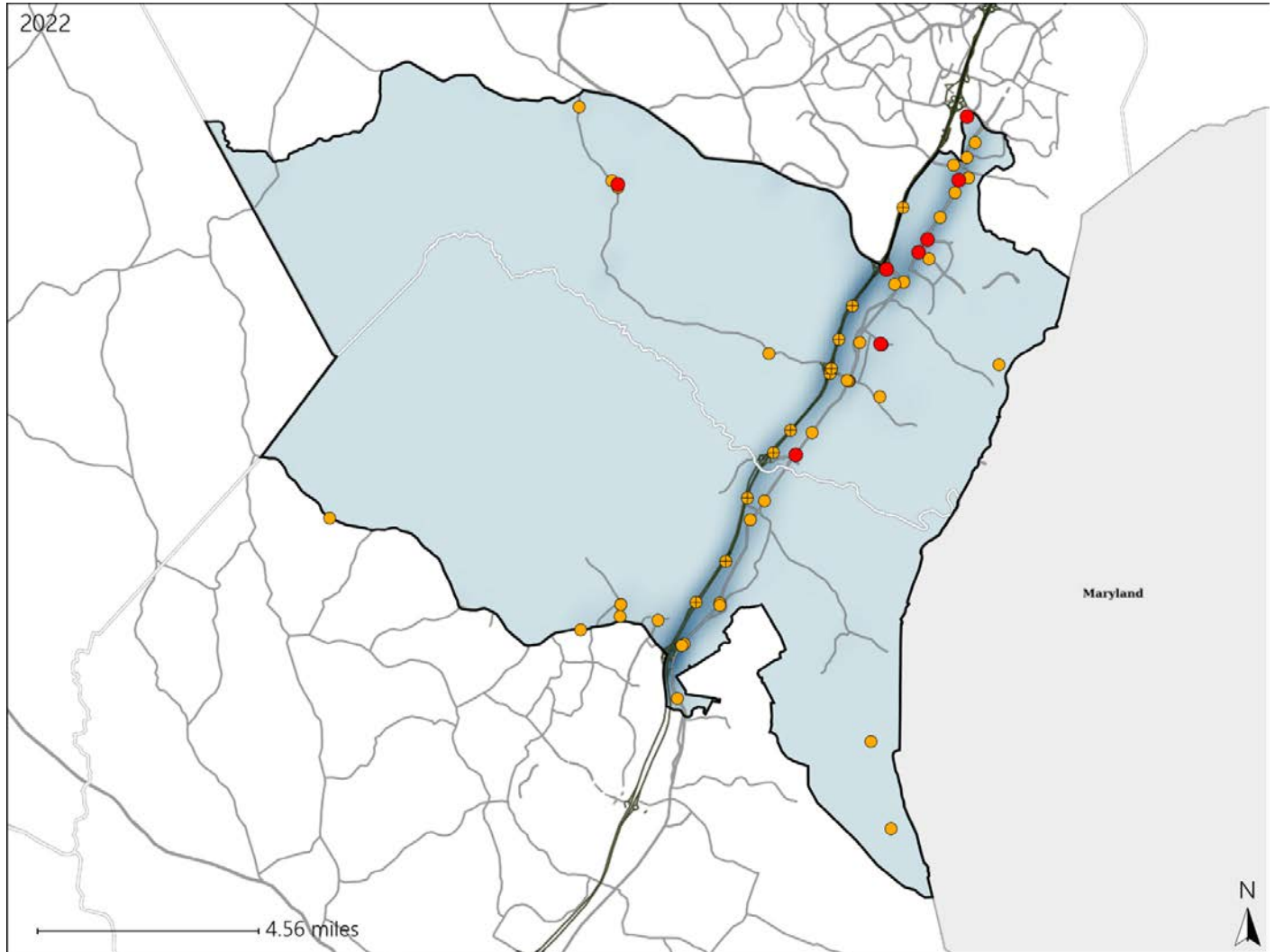


# Virginia House District 23 Crash Statistics

Report Generated May, 2023

	Count	Highest Time Period(s)	Highest Day(s)	Highest Month(s)
<b>Fatal Crashes</b>	<b>8</b>	3:00am - 5:59am	Friday • Saturday	August • June
<b>Resulting Fatalities</b>	<b>8</b>	9:00pm - 11:59pm (50%)	(50%)	(50%)
<b>Serious Injury Crashes</b>	<b>47</b>	3:00pm - 5:59pm (30%)	Saturday (26%)	June (19%)



### House District 23 Crashes

Interstate Crashes

- Fatal
- Serious Injury

Non-interstate Crashes

- Fatal
- Serious Injury

The blue gradient represents the density of all crashes.

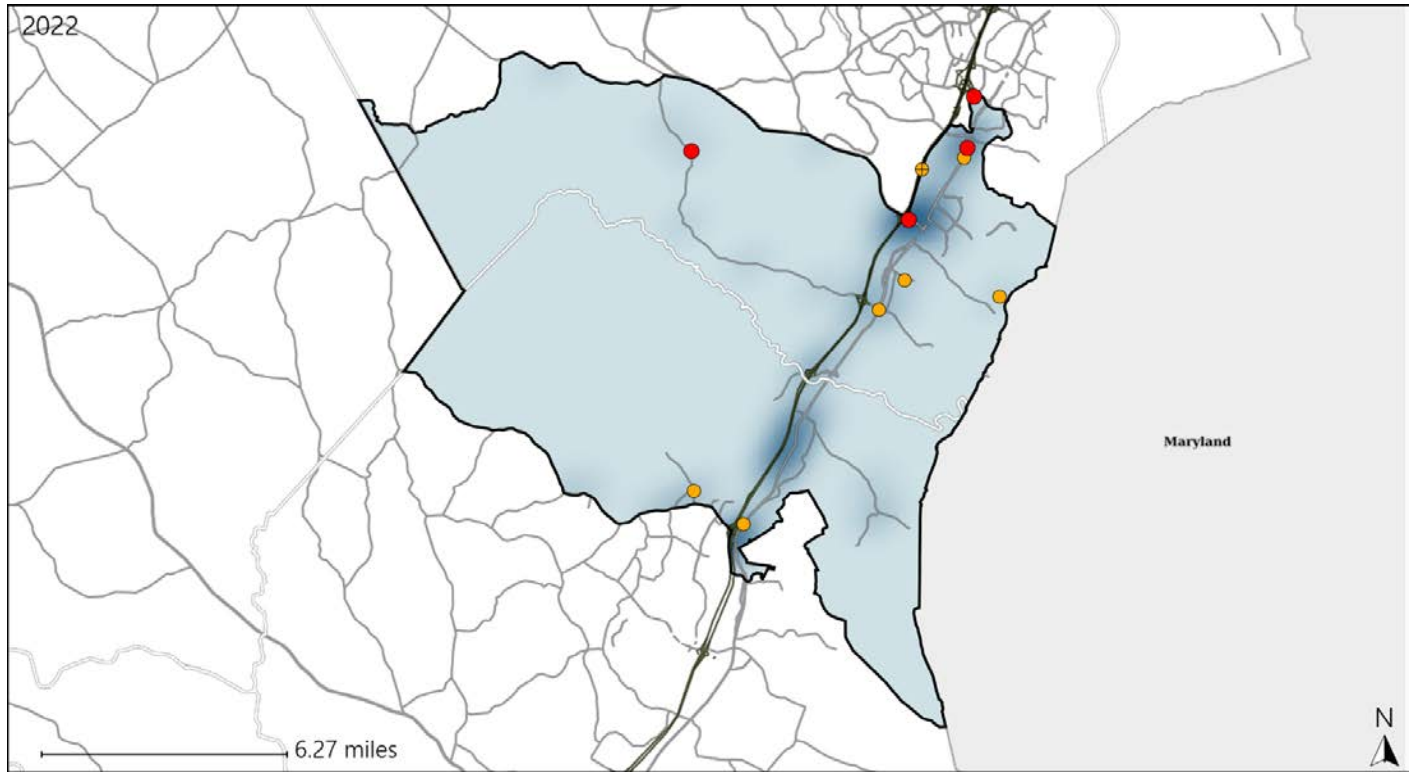


Available Crash Data - Calendar Year (CY)	CY 2019	CY 2020	CY 2021	CY 2022
Total Crashes	1389	1037	1350	1392
Fatal Crashes	3	7	4	8
Injury Crashes	389	246	361	365

# Virginia House District 23 Alcohol Crash Statistics

Report Generated May, 2023

	Count	Highest Time Period(s)	Highest Day(s)	Highest Month(s)
<b>Fatal Crashes</b>	<b>4</b>	<b>9:00pm - 11:59pm</b>	<b>Friday</b>	<b>August + June</b>
<b>Resulting Fatalities</b>	<b>4</b>	(50%)	(50%)	(50%)
<b>Serious Injury Crashes</b>	<b>8</b>	<b>3:00pm - 5:59pm</b>	<b>Sunday</b>	<b>September</b>
		(50%)	(38%)	(25%)



### House District 23 Alcohol-Related Crashes

Interstate Crashes                      Non-interstate Crashes  
 ● Fatal                                      ● Fatal  
 ⊕ Serious Injury                          ⊕ Serious Injury

The blue gradient represents the density of all alcohol-related crashes.

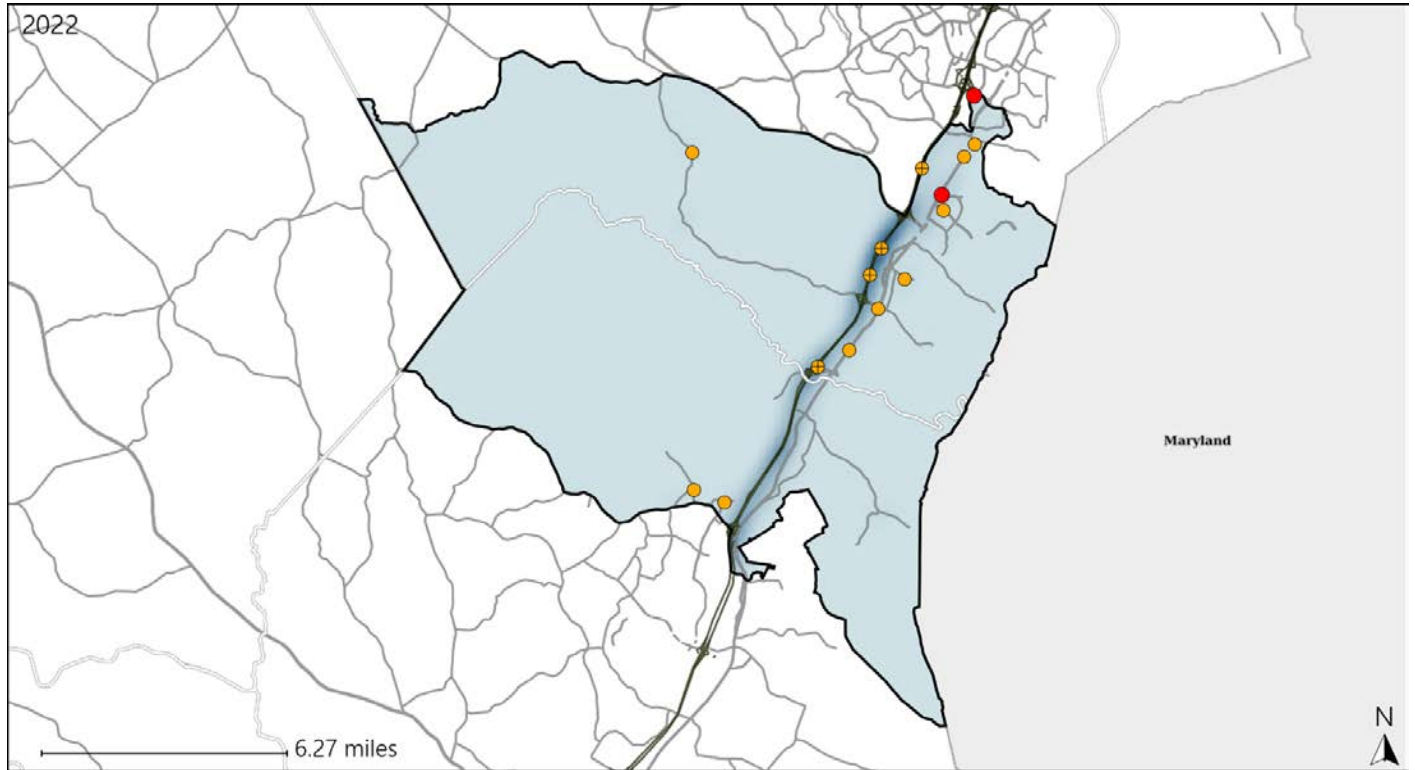


Available Crash Data - Calendar Year (CY)	CY 2019	CY 2020	CY 2021	CY 2022
Total Crashes	1389	1037	1350	1392
Fatal Crashes	3	7	4	8
Injury Crashes	389	246	361	365
Alcohol-Related Fatal Crashes	1	1	2	4
Percent of Alcohol-Related Fatal Crashes to Total Fatal Crashes	33%	14%	50%	50%
Alcohol-Related Injury Crashes	26	21	29	28
Percent of Alcohol-Related Injury Crashes to Total Injury Crashes	7%	9%	8%	8%

# Virginia House District 23 Speed Crash Statistics

Report Generated May, 2023

	Count	Highest Time Period(s)	Highest Day(s)	Highest Month(s)
<b>Fatal Crashes</b>	<b>2</b>	<b>6:00pm - 8:59pm</b>	<b>Friday - Thursday</b>	<b>February - June</b>
<b>Resulting Fatalities</b>	<b>2</b>	<b>9:00pm - 11:59pm</b> (100%)	<b>(100%)</b>	<b>(100%)</b>
<b>Serious Injury Crashes</b>	<b>13</b>	<b>3:00pm - 5:59pm</b> (23%)	<b>Sunday</b> (31%)	<b>July</b> (23%)



## House District 23 Speed-Related Crashes

Interstate Crashes

Non-interstate Crashes

- Fatal
- Serious Injury

- Fatal
- Serious Injury

The blue gradient represents the density of all speed-related crashes.

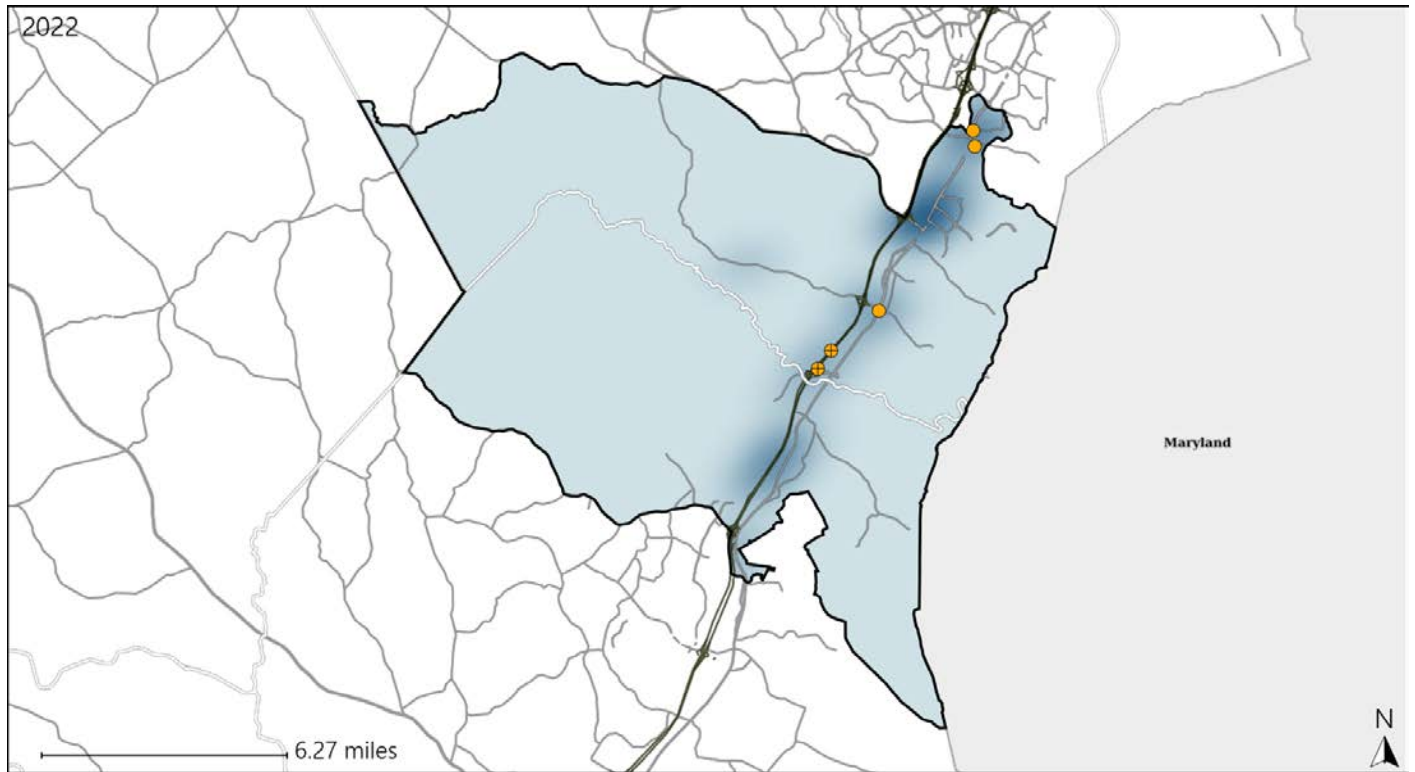


Available Crash Data - Calendar Year (CY)	CY 2019	CY 2020	CY 2021	CY 2022
Total Crashes	1389	1037	1350	1392
Fatal Crashes	3	7	4	8
Injury Crashes	389	246	361	365
Speed-Related Fatal Crashes	1	2	2	2
Percent of Speed-Related Fatal Crashes to Total Fatal Crashes	33%	29%	50%	25%
Speed-Related Injury Crashes	107	78	106	107
Percent of Speed-Related Injury Crashes to Total Injury Crashes	28%	32%	29%	29%

# Virginia House District 23 Unrestrained Crash Statistics

Report Generated May, 2023

	Count	Highest Time Period(s)	Highest Day(s)	Highest Month(s)
<b>Fatal Crashes</b>	<b>0</b>	-	-	-
<b>Unrestrained Fatalities</b>	<b>0</b>	-	-	-
<b>Serious Injury Crashes</b>	<b>5</b>	6:00am - 8:59am 6:00pm - 8:59pm (80%)	Friday • Monday (40%)	December (40%)



### House District 23 Unrestrained-Related Crashes

- |                    |                        |
|--------------------|------------------------|
| Interstate Crashes | Non-interstate Crashes |
| ● Fatal            | ● Fatal                |
| ⊕ Serious Injury   | ● Serious Injury       |

The blue gradient represents the density of all unrestrained-related crashes.

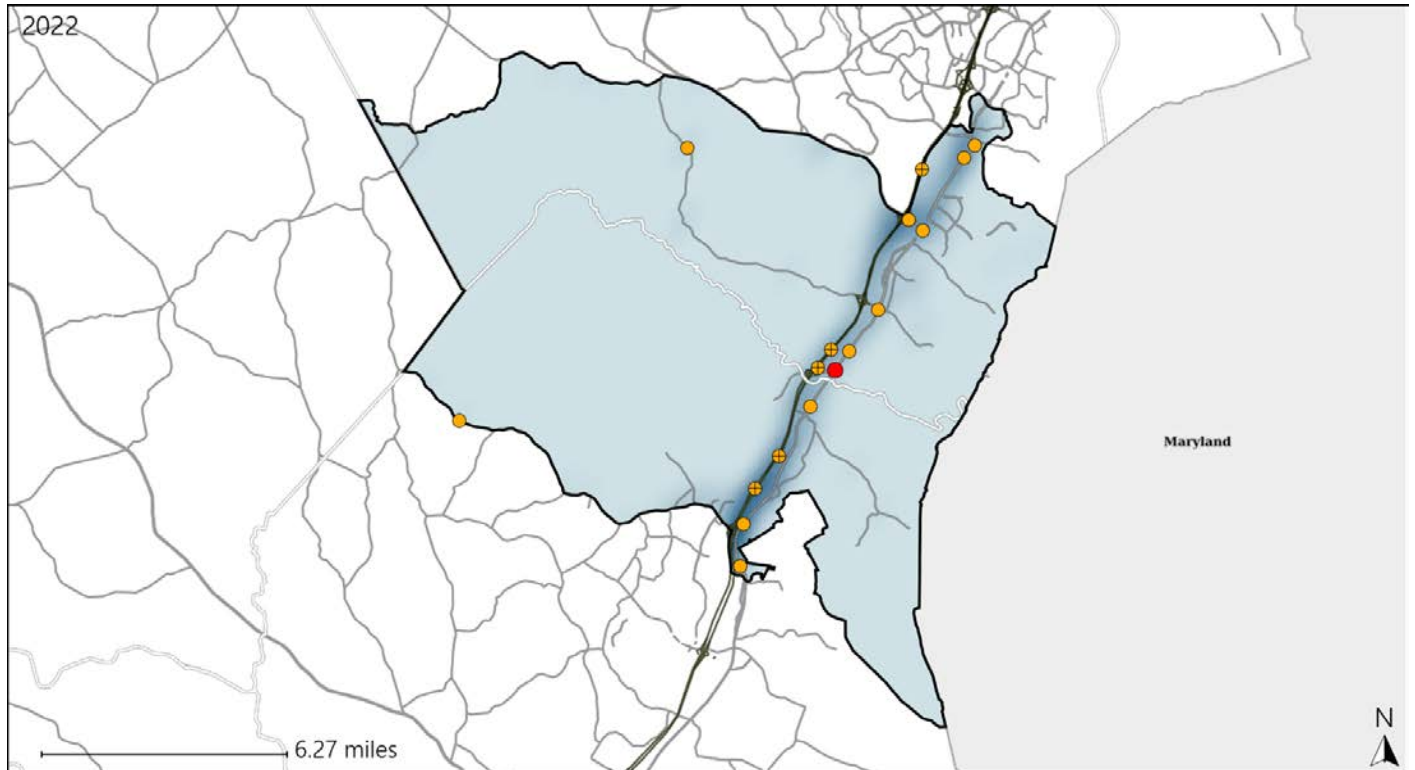


Available Crash Data - Calendar Year (CY)	CY 2019	CY 2020	CY 2021	CY 2022
<b>Total Crashes</b>	<b>1389</b>	<b>1037</b>	<b>1350</b>	<b>1392</b>
<b>Fatalities</b>	<b>3</b>	<b>7</b>	<b>4</b>	<b>8</b>
<b>Injuries</b>	<b>629</b>	<b>412</b>	<b>594</b>	<b>586</b>
<b>Unrestrained Fatalities</b>	<b>0</b>	<b>2</b>	<b>0</b>	<b>0</b>
<b>Percent of Unrestrained Fatalities to Total Fatalities</b>	<b>0%</b>	<b>29%</b>	<b>0%</b>	<b>0%</b>
<b>Unrestrained Injuries</b>	<b>22</b>	<b>22</b>	<b>40</b>	<b>32</b>
<b>Percent of Unrestrained Injuries to Total Injuries</b>	<b>3%</b>	<b>5%</b>	<b>7%</b>	<b>5%</b>

# Virginia House District 23 Distracted Driving Crash Statistics

Report Generated May, 2023

	Count	Highest Time Period(s)	Highest Day(s)	Highest Month(s)
<b>Fatal Crashes</b>	<b>1</b>	<b>6:00am - 8:59am</b>	<b>Monday</b>	<b>December</b>
<b>Resulting Fatalities</b>	<b>1</b>	(100%)	(100%)	(100%)
<b>Serious Injury Crashes</b>	<b>16</b>	<b>3:00pm - 5:59pm</b>	<b>Saturday</b>	<b>July - May</b>
		(44%)	(31%)	(38%)



## House District 23 Distracted Driving-Related Crashes

- |                    |                        |
|--------------------|------------------------|
| Interstate Crashes | Non-interstate Crashes |
| Fatal              | Fatal                  |
| Serious Injury     | Serious Injury         |

The blue gradient represents the density of all distracted driving-related crashes.



Available Crash Data - Calendar Year (CY)	CY 2019	CY 2020	CY 2021	CY 2022
Total Crashes	1389	1037	1350	1392
Fatal Crashes	3	7	4	8
Injury Crashes	389	246	361	365
Distracted Driving-Related Fatal Crashes	1	1	1	1
Percent of Distracted Driving-Related Fatal Crashes to Total Fatal Crashes	33%	14%	25%	13%
Distracted Driving-Related Injury Crashes	98	55	83	86
Percent of Distracted Driving-Related Injury Crashes to Total Injury Crashes	25%	22%	23%	24%