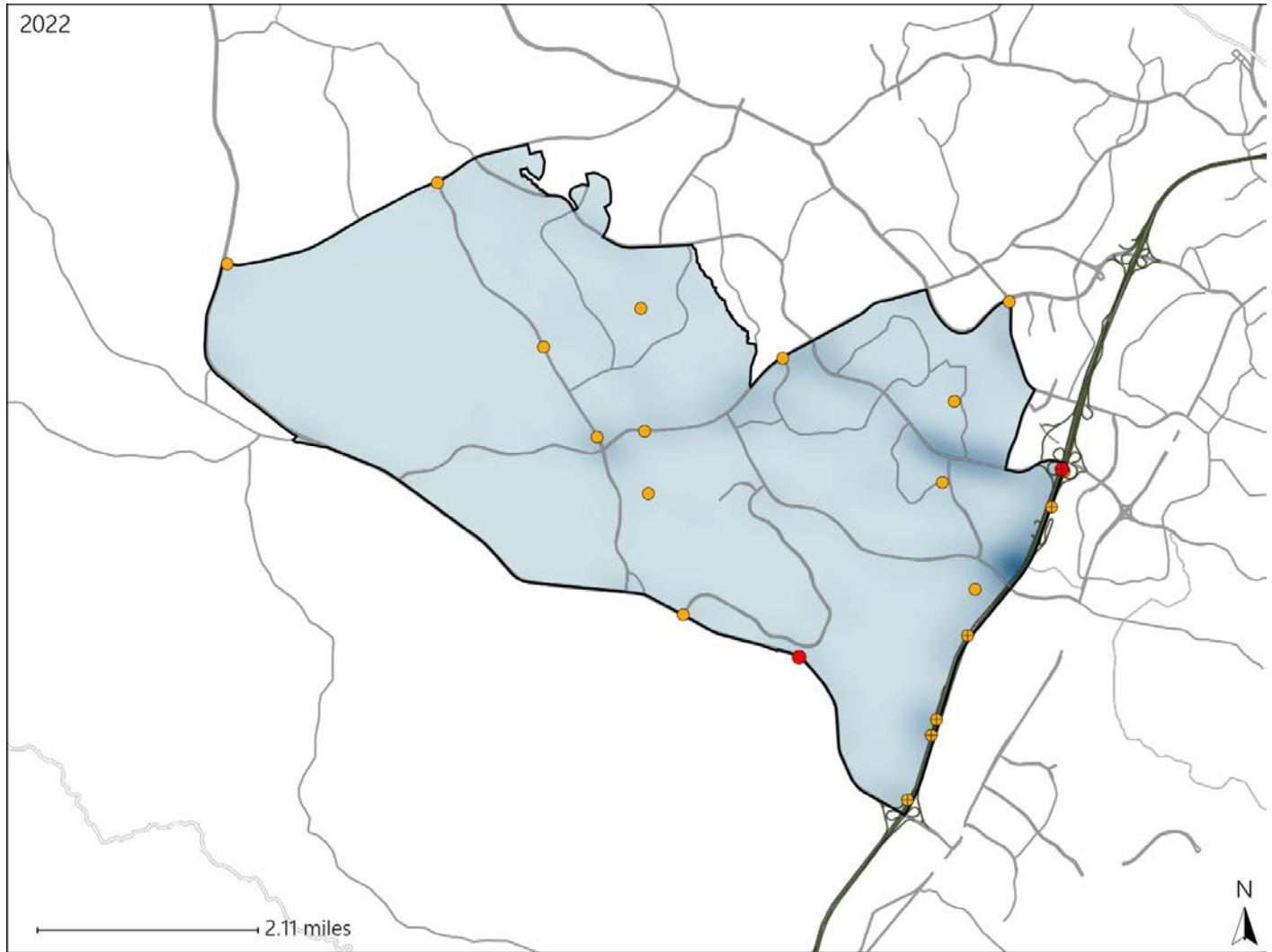


# Virginia House District 24 Crash Statistics

Report Generated May, 2023

	Count	Highest Time Period(s)	Highest Day(s)	Highest Month(s)
<b>Fatal Crashes</b>	<b>2</b>	<b>6:00am - 8:59am</b>	<b>Monday • Thursday</b>	<b>July • September</b>
<b>Resulting Fatalities</b>	<b>2</b>	(100%)	(100%)	(100%)
<b>Serious Injury Crashes</b>	<b>19</b>	<b>Noon - 2:59pm</b>	<b>Thursday</b>	<b>February • March</b>
		(32%)	(26%)	(32%)



### House District 24 Crashes

Interstate Crashes

- Fatal
- Serious Injury

Non-interstate Crashes

- Fatal
- Serious Injury

The blue gradient represents the density of all crashes.

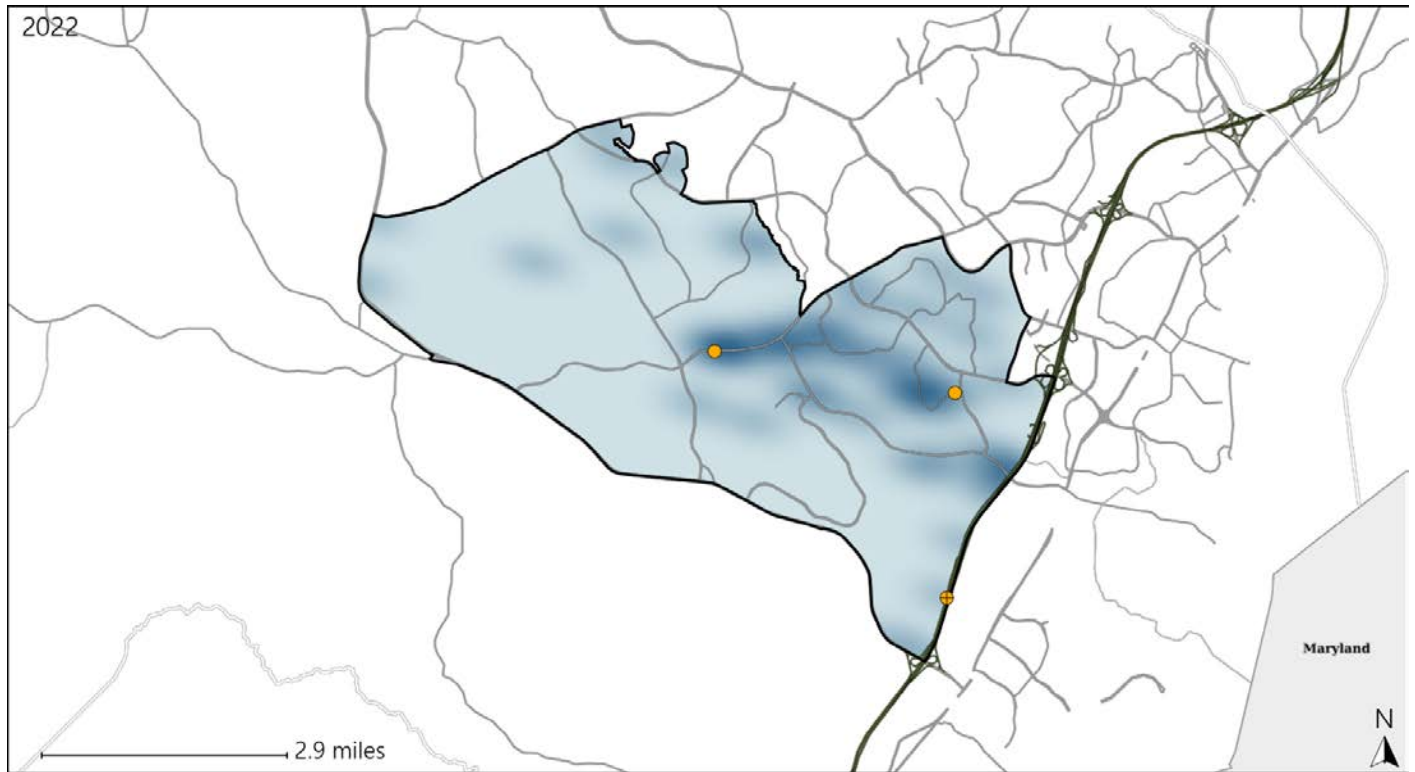


Available Crash Data - Calendar Year (CY)	CY 2019	CY 2020	CY 2021	CY 2022
<b>Total Crashes</b>	<b>655</b>	<b>520</b>	<b>672</b>	<b>765</b>
<b>Fatal Crashes</b>	<b>1</b>	<b>3</b>	<b>4</b>	<b>2</b>
<b>Injury Crashes</b>	<b>207</b>	<b>130</b>	<b>168</b>	<b>213</b>

# Virginia House District 24 Alcohol Crash Statistics

Report Generated May, 2023

	Count	Highest Time Period(s)	Highest Day(s)	Highest Month(s)
<b>Fatal Crashes</b>	<b>0</b>	-	-	-
<b>Resulting Fatalities</b>	<b>0</b>	-	-	-
<b>Serious Injury Crashes</b>	<b>3</b>	3:00am - 5:59am 6:00pm - 8:59pm (66%)	Thursday (67%)	December - March (66%)



### House District 24 Alcohol-Related Crashes

Interstate Crashes                      Non-interstate Crashes  
 ● Fatal                                      ● Fatal  
 ⊕ Serious Injury                          ⊕ Serious Injury

The blue gradient represents the density of all alcohol-related crashes.

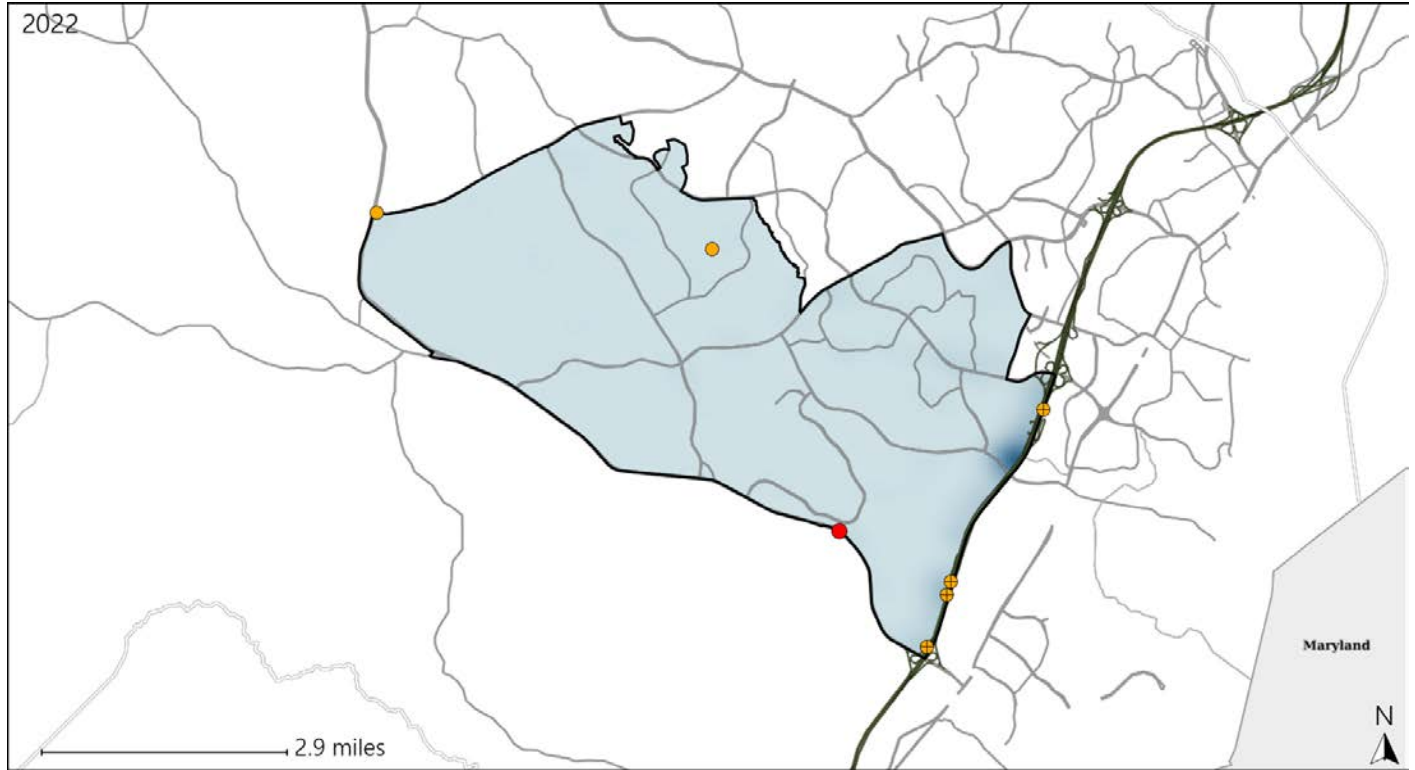


Available Crash Data - Calendar Year (CY)	CY 2019	CY 2020	CY 2021	CY 2022
Total Crashes	655	520	672	765
Fatal Crashes	1	3	4	2
Injury Crashes	207	130	168	213
Alcohol-Related Fatal Crashes	1	0	1	0
Percent of Alcohol-Related Fatal Crashes to Total Fatal Crashes	100%	0%	25%	0%
Alcohol-Related Injury Crashes	10	9	12	11
Percent of Alcohol-Related Injury Crashes to Total Injury Crashes	5%	7%	7%	5%

# Virginia House District 24 Speed Crash Statistics

Report Generated May, 2023

	Count	Highest Time Period(s)	Highest Day(s)	Highest Month(s)
<b>Fatal Crashes</b>	<b>1</b>	<b>6:00am - 8:59am</b>	<b>Thursday</b>	<b>July</b>
<b>Resulting Fatalities</b>	<b>1</b>	<b>(100%)</b>	<b>(100%)</b>	<b>(100%)</b>
<b>Serious Injury Crashes</b>	<b>6</b>	<b>Noon - 2:59pm</b>	<b>Thursday • Wednesday</b>	<b>August</b>
		<b>(50%)</b>	<b>(66%)</b>	<b>(33%)</b>



## House District 24 Speed-Related Crashes

Interstate Crashes                      Non-interstate Crashes  
 ● Fatal                                      ● Fatal  
 ⊕ Serious Injury                          ⊕ Serious Injury

The blue gradient represents the density of all speed-related crashes.

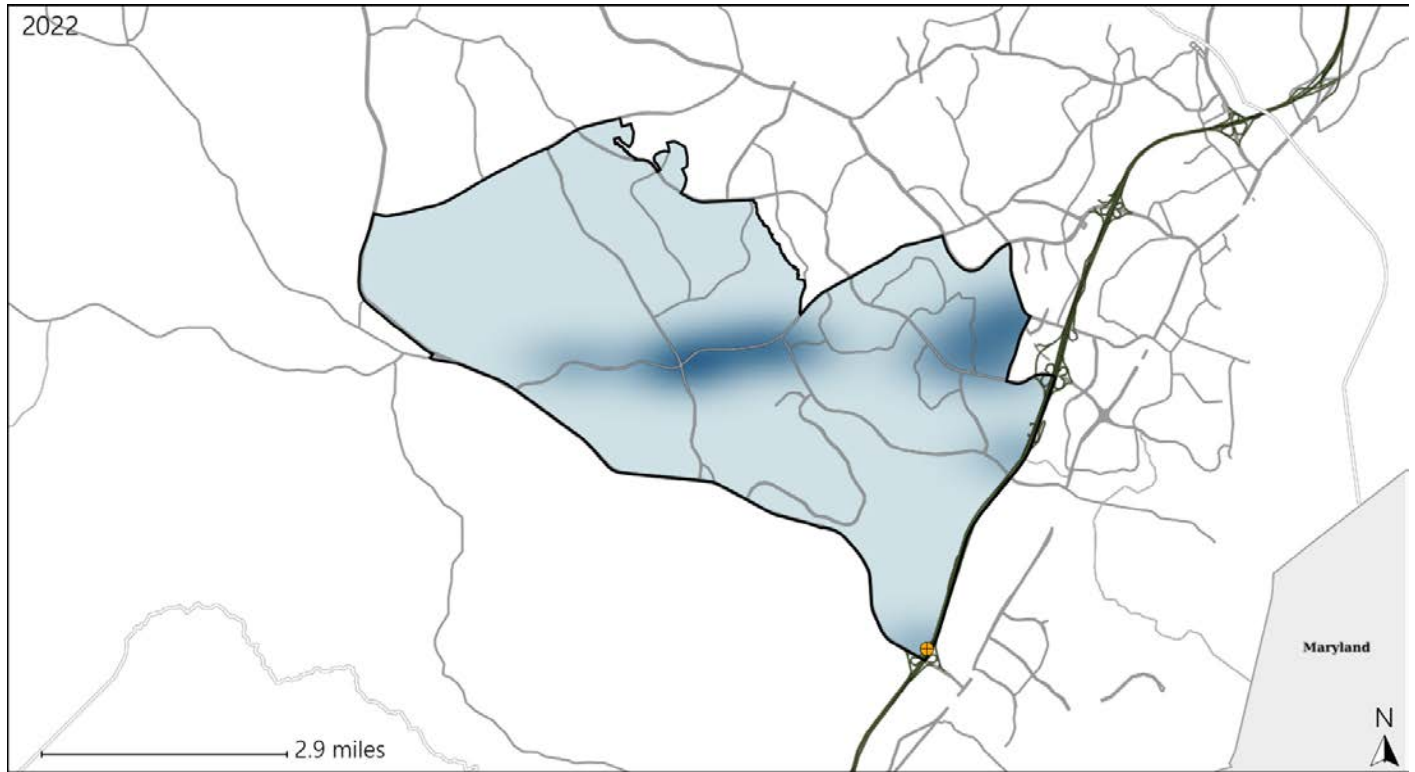


Available Crash Data - Calendar Year (CY)	CY 2019	CY 2020	CY 2021	CY 2022
<b>Total Crashes</b>	<b>655</b>	<b>520</b>	<b>672</b>	<b>765</b>
<b>Fatal Crashes</b>	<b>1</b>	<b>3</b>	<b>4</b>	<b>2</b>
<b>Injury Crashes</b>	<b>207</b>	<b>130</b>	<b>168</b>	<b>213</b>
<b>Speed-Related Fatal Crashes</b>	<b>1</b>	<b>2</b>	<b>2</b>	<b>1</b>
<b>Percent of Speed-Related Fatal Crashes to Total Fatal Crashes</b>	<b>100%</b>	<b>67%</b>	<b>50%</b>	<b>50%</b>
<b>Speed-Related Injury Crashes</b>	<b>47</b>	<b>32</b>	<b>44</b>	<b>50</b>
<b>Percent of Speed-Related Injury Crashes to Total Injury Crashes</b>	<b>23%</b>	<b>25%</b>	<b>26%</b>	<b>23%</b>

# Virginia House District 24 Unrestrained Crash Statistics

Report Generated May, 2023

	Count	Highest Time Period(s)	Highest Day(s)	Highest Month(s)
<b>Fatal Crashes</b>	<b>0</b>	-	-	-
<b>Unrestrained Fatalities</b>	<b>0</b>	-	-	-
<b>Serious Injury Crashes</b>	<b>1</b>	<b>Noon - 2:59pm (100%)</b>	<b>Friday (100%)</b>	<b>July (100%)</b>



## House District 24 Unrestrained-Related Crashes

Interstate Crashes

Non-interstate Crashes

- Fatal
- Serious Injury

- Fatal
- Serious Injury

The blue gradient represents the density of all unrestrained-related crashes.

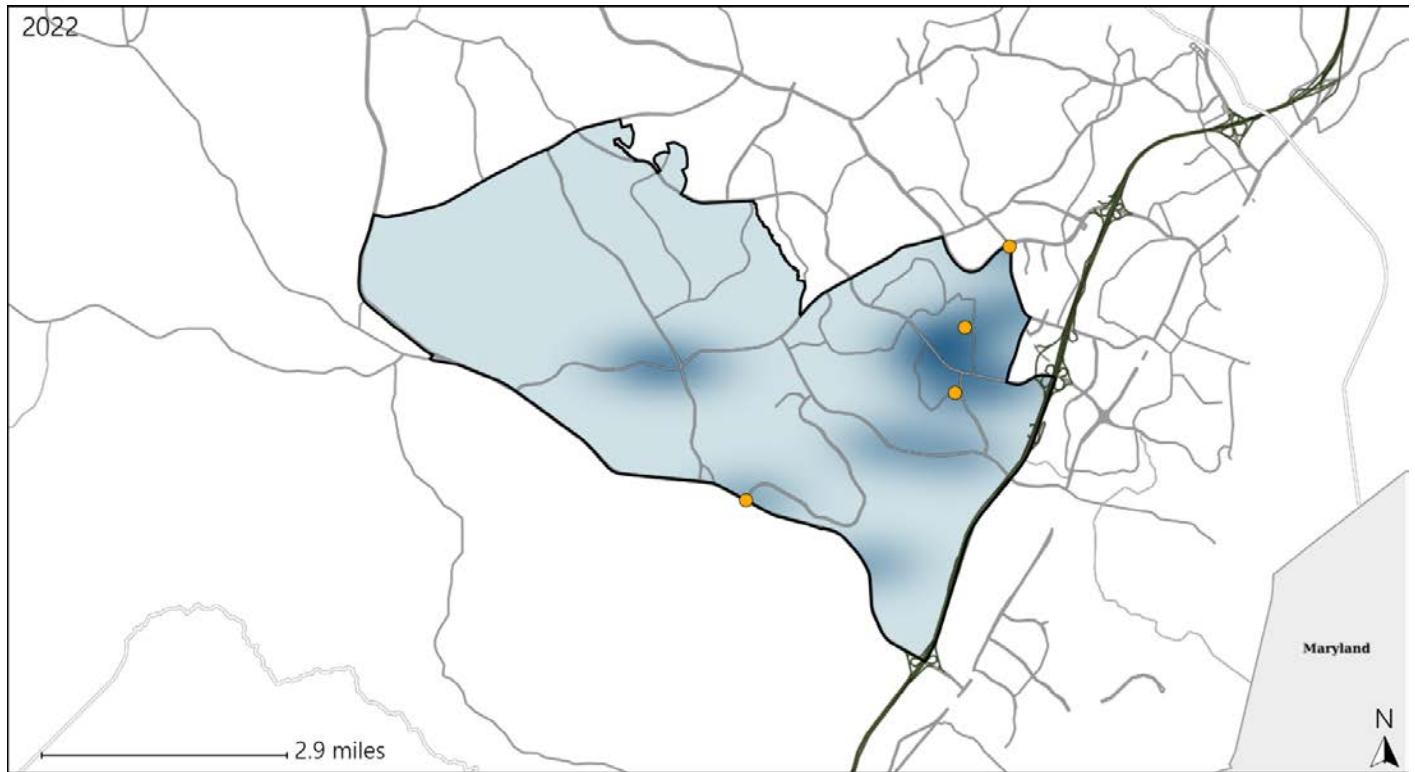


Available Crash Data - Calendar Year (CY)	CY 2019	CY 2020	CY 2021	CY 2022
<b>Total Crashes</b>	<b>655</b>	<b>520</b>	<b>672</b>	<b>765</b>
<b>Fatalities</b>	<b>1</b>	<b>3</b>	<b>6</b>	<b>2</b>
<b>Injuries</b>	<b>357</b>	<b>215</b>	<b>293</b>	<b>346</b>
<b>Unrestrained Fatalities</b>	<b>0</b>	<b>1</b>	<b>2</b>	<b>0</b>
<b>Percent of Unrestrained Fatalities to Total Fatalities</b>	<b>0%</b>	<b>33%</b>	<b>33%</b>	<b>0%</b>
<b>Unrestrained Injuries</b>	<b>14</b>	<b>11</b>	<b>17</b>	<b>14</b>
<b>Percent of Unrestrained Injuries to Total Injuries</b>	<b>4%</b>	<b>5%</b>	<b>6%</b>	<b>4%</b>

# Virginia House District 24 Pedestrian Crash Statistics

Report Generated May, 2023

	Count	Highest Time Period(s)	Highest Day(s)	Highest Month(s)
<b>Fatal Crashes</b>	<b>0</b>	-	-	-
<b>Pedestrian Fatalities</b>	<b>0</b>	-	-	-
<b>Serious Injury Crashes</b>	<b>4</b>	3:00pm - 5:59pm 6:00am - 8:59am (50%)	Monday (50%)	February • March (50%)



### House District 24 Pedestrian-Related Crashes

- |                    |                        |
|--------------------|------------------------|
| Interstate Crashes | Non-interstate Crashes |
| ● Fatal            | ● Fatal                |
| ⊕ Serious Injury   | ● Serious Injury       |

The blue gradient represents the density of all pedestrian-related crashes.



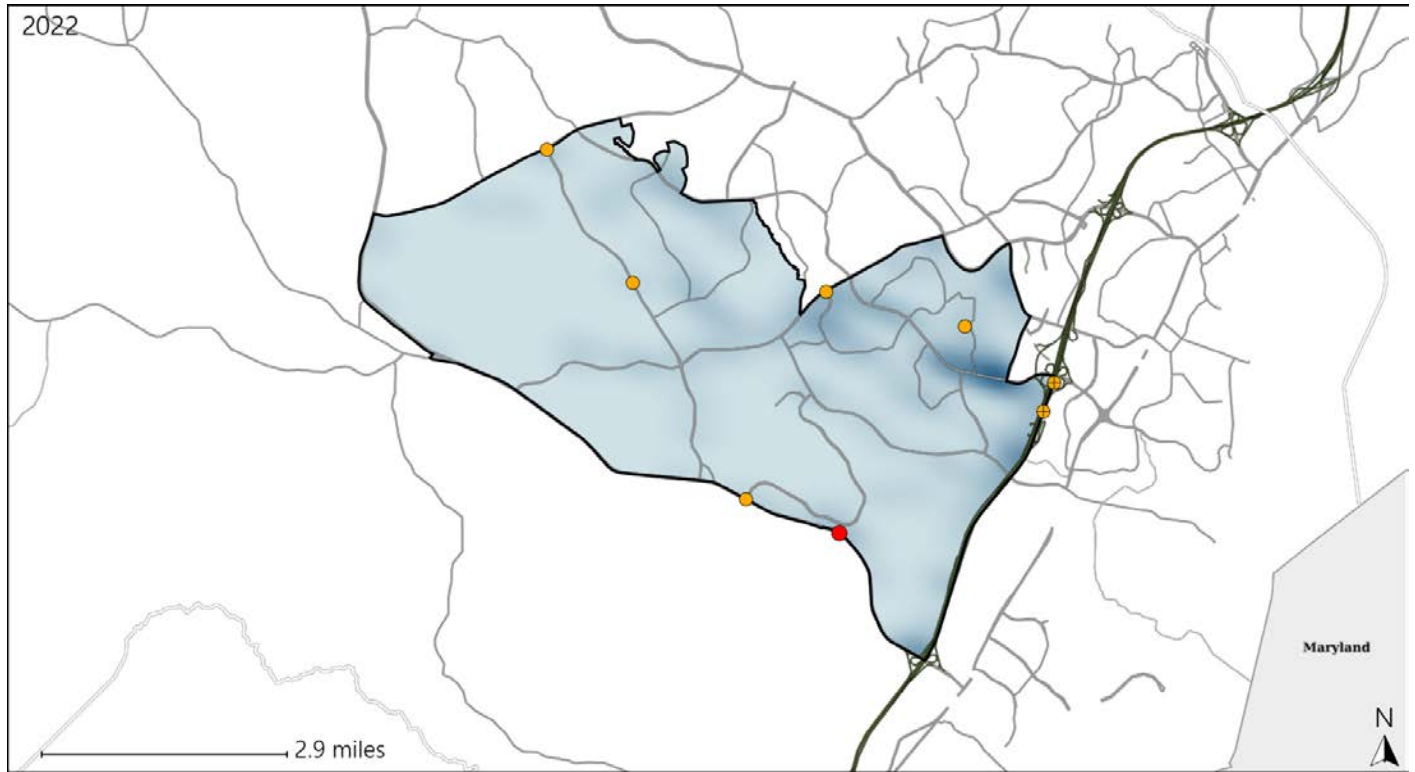
Available Crash Data - Calendar Year (CY)	CY 2019	CY 2020	CY 2021	CY 2022
Total Crashes	655	520	672	765
Fatal Crashes	1	3	4	2
Injury Crashes	207	130	168	213
Pedestrian-Related Fatal Crashes	0	1	0	0
Percent of Pedestrian-Related Fatal Crashes to Total Fatal Crashes	0%	33%	0%	0%
Pedestrian-Related Injury Crashes	7	4	6	13
Percent of Pedestrian-Related Injury Crashes to Total Injury Crashes	3%	3%	4%	6%



# Virginia House District 24 Distracted Driving Crash Statistics

Report Generated May, 2023

	Count	Highest Time Period(s)	Highest Day(s)	Highest Month(s)
<b>Fatal Crashes</b>	<b>1</b>	<b>6:00am - 8:59am</b>	<b>Thursday</b>	<b>July</b>
<b>Resulting Fatalities</b>	<b>1</b>	(100%)	(100%)	(100%)
<b>Serious Injury Crashes</b>	<b>7</b>	<b>3:00pm - 5:59pm</b>	<b>Thursday</b>	<b>November</b>
		(57%)	(43%)	(29%)



## House District 24 Distracted Driving-Related Crashes

- |                    |                        |
|--------------------|------------------------|
| Interstate Crashes | Non-interstate Crashes |
| Fatal              | Fatal                  |
| Serious Injury     | Serious Injury         |

The blue gradient represents the density of all distracted driving-related crashes.



Available Crash Data - Calendar Year (CY)	CY 2019	CY 2020	CY 2021	CY 2022
Total Crashes	655	520	672	765
Fatal Crashes	1	3	4	2
Injury Crashes	207	130	168	213
Distracted Driving-Related Fatal Crashes	0	2	1	1
Percent of Distracted Driving-Related Fatal Crashes to Total Fatal Crashes	0%	67%	25%	50%
Distracted Driving-Related Injury Crashes	41	29	33	46
Percent of Distracted Driving-Related Injury Crashes to Total Injury Crashes	20%	22%	20%	22%