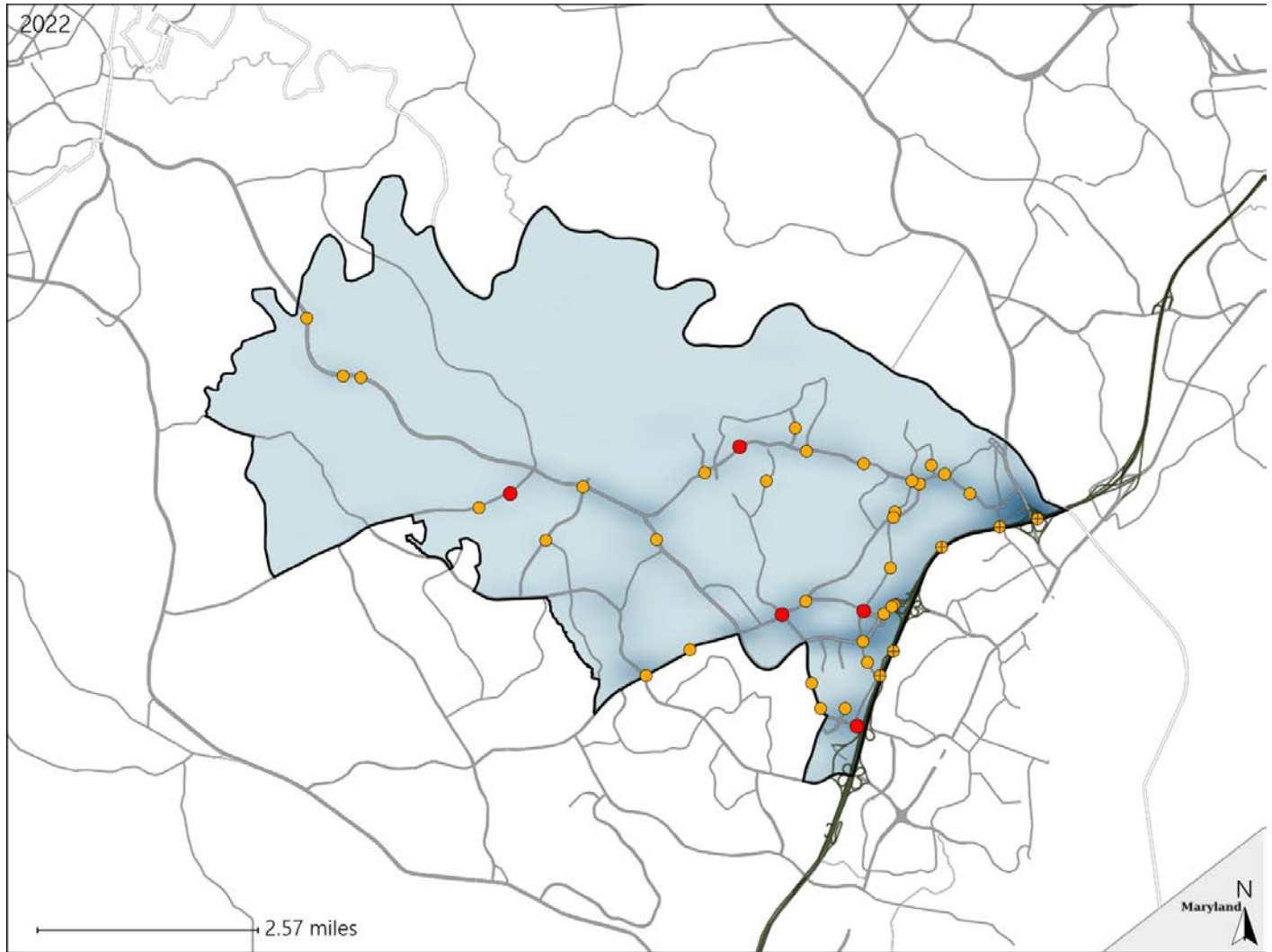


Virginia House District 25 Crash Statistics

Report Generated May, 2023

	Count	Highest Time Period(s)	Highest Day(s)	Highest Month(s)
Fatal Crashes	5	Noon - 2:59pm	Friday • Monday	April • July
Resulting Fatalities	5	(60%)	(40%)	(40%)
Serious Injury Crashes	36	6:00pm - 8:59pm	Monday	November
		(25%)	(25%)	(17%)




House District 25 Crashes


Interstate Crashes

Non-interstate Crashes

 Fatal

 Fatal

 Serious Injury

 Serious Injury

The blue gradient represents the density of all crashes.

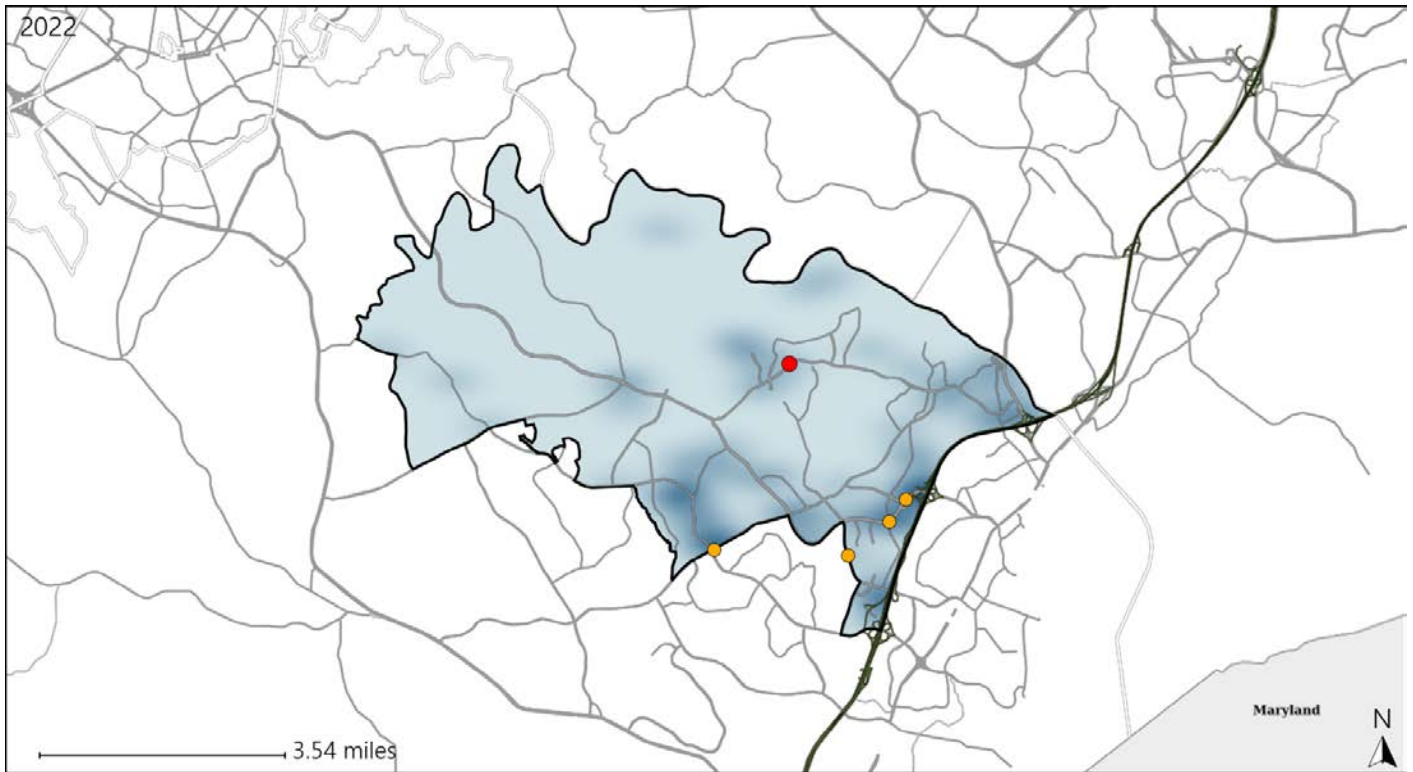


Available Crash Data - Calendar Year (CY)	CY 2019	CY 2020	CY 2021	CY 2022
Total Crashes	1401	1027	1299	1326
Fatal Crashes	5	2	6	5
Injury Crashes	416	259	377	417

Virginia House District 25 Alcohol Crash Statistics

Report Generated May, 2023

	Count	Highest Time Period(s)	Highest Day(s)	Highest Month(s)
Fatal Crashes	1	6:00pm - 8:59pm	Saturday	June
Resulting Fatalities	1	(100%)	(100%)	(100%)
Serious Injury Crashes	4	9:00pm - 11:59pm Midnight - 2:59am	Wednesday	February • January
		(100%)	(50%)	(50%)



House District 25 Alcohol-Related Crashes

Interstate Crashes Non-interstate Crashes
 ● Fatal ● Fatal
 ⊕ Serious Injury ⊕ Serious Injury

The blue gradient represents the density of all alcohol-related crashes.

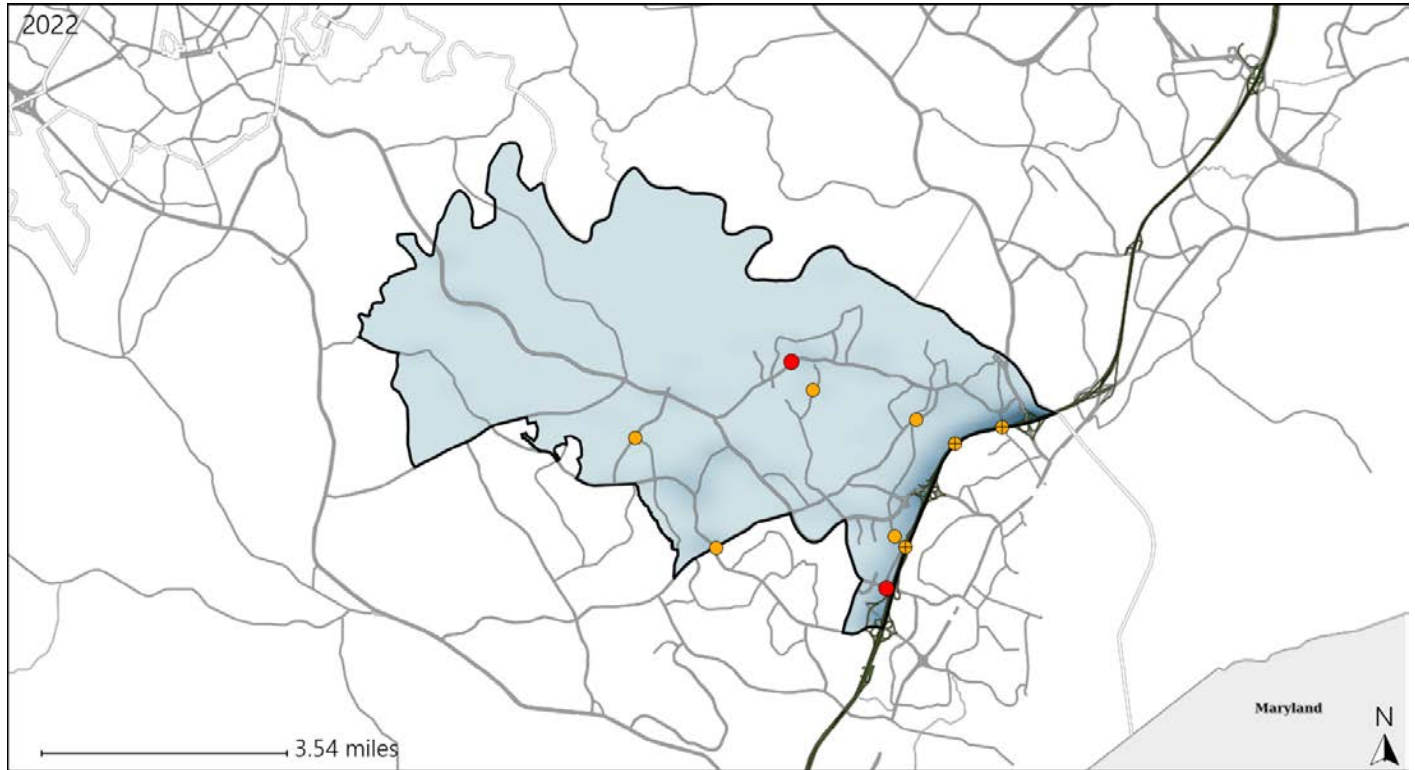


Available Crash Data - Calendar Year (CY)	CY 2019	CY 2020	CY 2021	CY 2022
Total Crashes	1401	1027	1299	1326
Fatal Crashes	5	2	6	5
Injury Crashes	416	259	377	417
Alcohol-Related Fatal Crashes	1	1	3	1
Percent of Alcohol-Related Fatal Crashes to Total Fatal Crashes	20%	50%	50%	20%
Alcohol-Related Injury Crashes	29	15	25	27
Percent of Alcohol-Related Injury Crashes to Total Injury Crashes	7%	6%	7%	6%

Virginia House District 25 Speed Crash Statistics

Report Generated May, 2023

	Count	Highest Time Period(s)	Highest Day(s)	Highest Month(s)
Fatal Crashes	2	6:00pm - 8:59pm	Saturday • Tuesday	June • May
Resulting Fatalities	2	Noon - 2:59pm (100%)	(100%)	(100%)
Serious Injury Crashes	8	3:00pm - 5:59pm (38%)	Thursday (38%)	January • June (50%)



House District 25 Speed-Related Crashes

Interstate Crashes Non-interstate Crashes
 ● Fatal ● Fatal
 ⊕ Serious Injury ⊕ Serious Injury

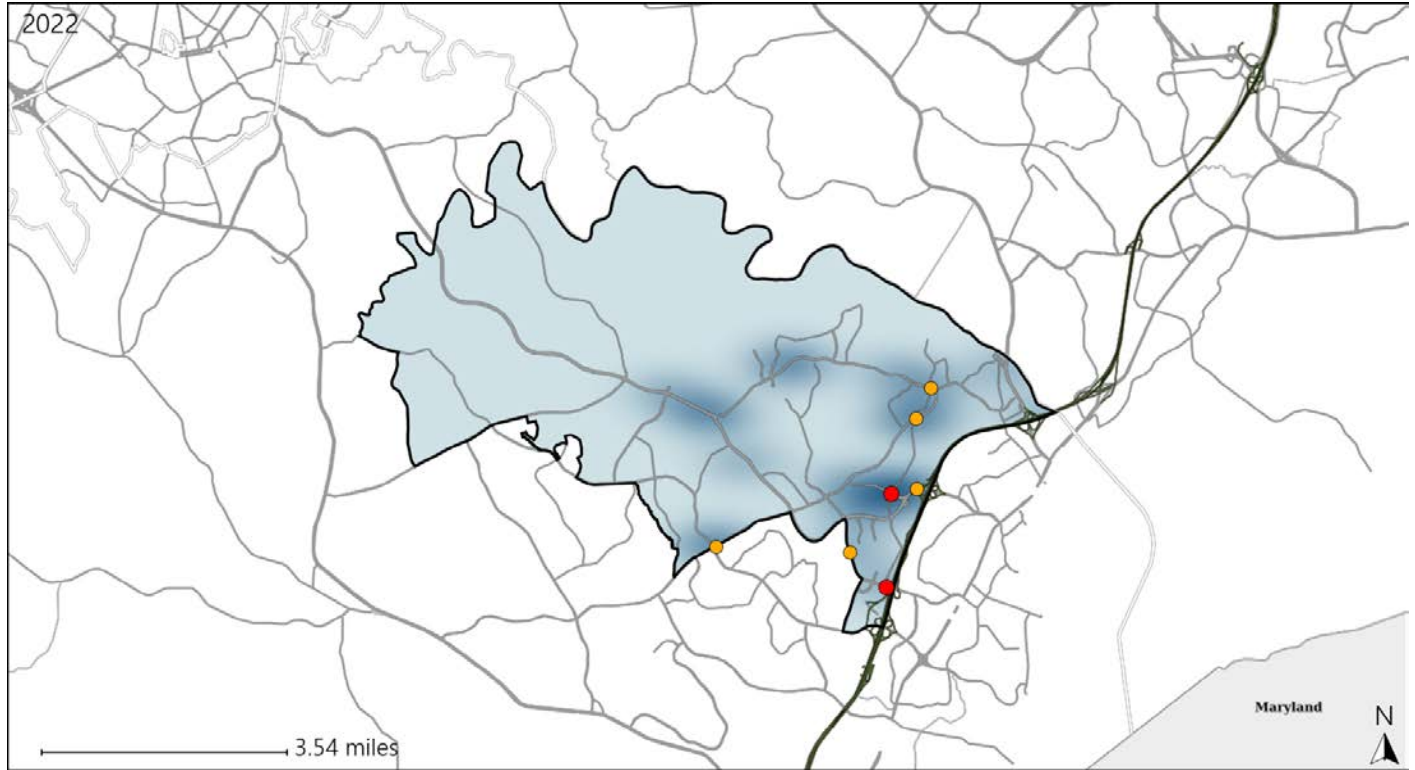
The blue gradient represents the density of all speed-related crashes.

Available Crash Data - Calendar Year (CY)	CY 2019	CY 2020	CY 2021	CY 2022
Total Crashes	1401	1027	1299	1326
Fatal Crashes	5	2	6	5
Injury Crashes	416	259	377	417
Speed-Related Fatal Crashes	3	1	2	2
Percent of Speed-Related Fatal Crashes to Total Fatal Crashes	60%	50%	33%	40%
Speed-Related Injury Crashes	95	70	89	68
Percent of Speed-Related Injury Crashes to Total Injury Crashes	23%	27%	24%	16%

Virginia House District 25 Unrestrained Crash Statistics

Report Generated May, 2023

	Count	Highest Time Period(s)	Highest Day(s)	Highest Month(s)
Fatal Crashes	2	Noon - 2:59pm	Friday • Tuesday	July • May
Unrestrained Fatalities	2	(100%)	(100%)	(100%)
Serious Injury Crashes	5	Midnight - 2:59am	Friday • Saturday	January
		(40%)	(40%)	(40%)



House District 25 Unrestrained-Related Crashes

- | | |
|--|--|
| Interstate Crashes | Non-interstate Crashes |
| ● Fatal | ● Fatal |
| ● Serious Injury | ● Serious Injury |

The blue gradient represents the density of all unrestrained-related crashes.

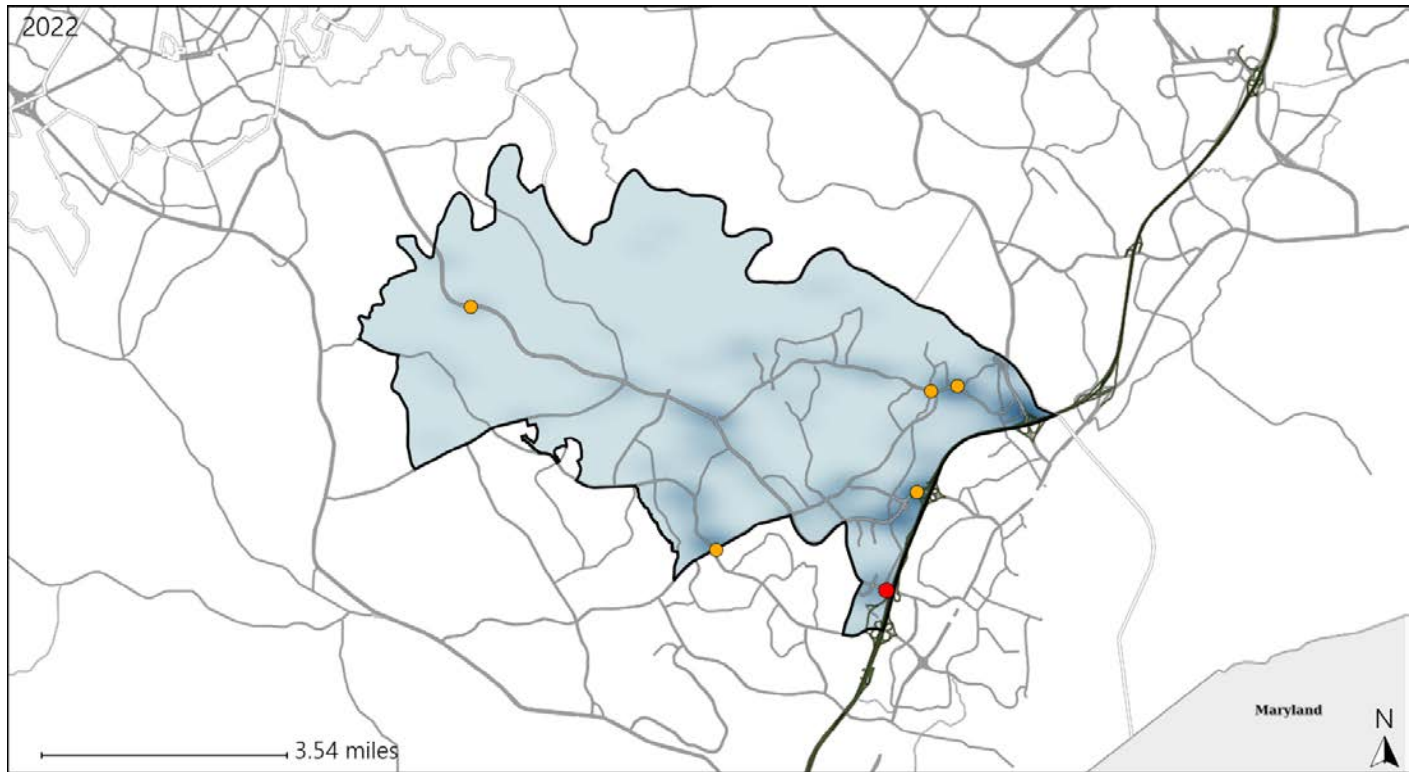


Available Crash Data - Calendar Year (CY)	CY 2019	CY 2020	CY 2021	CY 2022
Total Crashes	1401	1027	1299	1326
Fatalities	5	2	7	5
Injuries	685	393	620	729
Unrestrained Fatalities	2	2	3	2
Percent of Unrestrained Fatalities to Total Fatalities	40%	100%	43%	40%
Unrestrained Injuries	24	16	24	24
Percent of Unrestrained Injuries to Total Injuries	4%	4%	4%	3%

Virginia House District 25 Distracted Driving Crash Statistics

Report Generated May, 2023

	Count	Highest Time Period(s)	Highest Day(s)	Highest Month(s)
Fatal Crashes	1	Noon - 2:59pm	Tuesday	May
Resulting Fatalities	1	(100%)	(100%)	(100%)
Serious Injury Crashes	5	3:00am - 5:59am 6:00pm - 8:59pm	Friday • Monday	January • July
		(40%)	(40%)	(40%)



House District 25 Distracted Driving-Related Crashes

- | | |
|--------------------|------------------------|
| Interstate Crashes | Non-interstate Crashes |
| ● Fatal | ● Fatal |
| ⊕ Serious Injury | ⊕ Serious Injury |

The blue gradient represents the density of all distracted driving-related crashes.



Available Crash Data - Calendar Year (CY)	CY 2019	CY 2020	CY 2021	CY 2022
Total Crashes	1401	1027	1299	1326
Fatal Crashes	5	2	6	5
Injury Crashes	416	259	377	417
Distracted Driving-Related Fatal Crashes	0	1	0	1
Percent of Distracted Driving-Related Fatal Crashes to Total Fatal Crashes	0%	50%	0%	20%
Distracted Driving-Related Injury Crashes	87	46	93	84
Percent of Distracted Driving-Related Injury Crashes to Total Injury Crashes	21%	18%	25%	20%