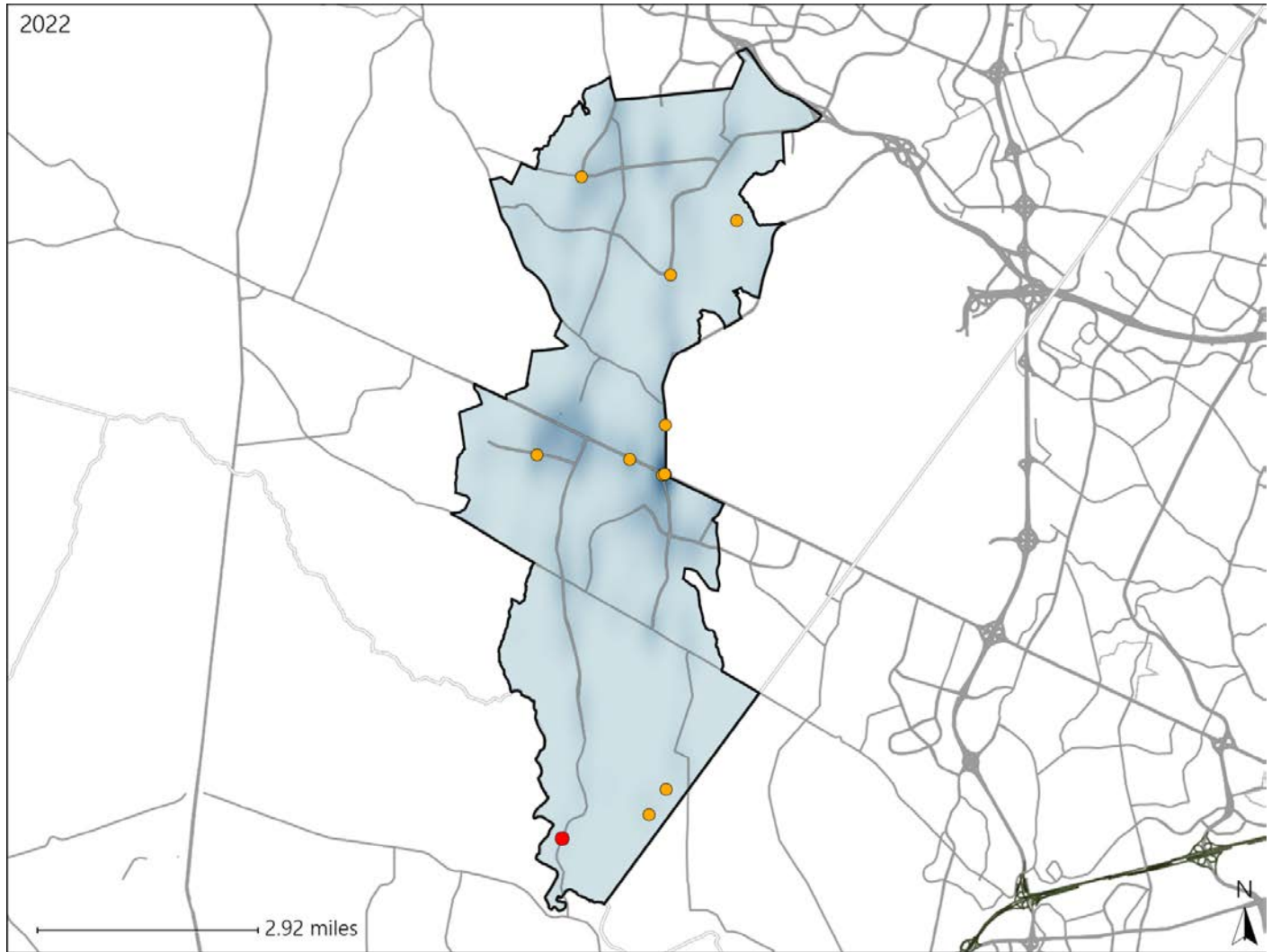


Virginia House District 26 Crash Statistics

Report Generated May, 2023

	Count	Highest Time Period(s)	Highest Day(s)	Highest Month(s)
Fatal Crashes	1	6:00am - 8:59am	Friday	September
Resulting Fatalities	1	(100%)	(100%)	(100%)
Serious Injury Crashes	11	6:00pm - 8:59pm	Tuesday	May
		(55%)	(27%)	(36%)



House District 26 Crashes

Interstate Crashes

- Fatal
- Serious Injury

Non-interstate Crashes

- Fatal
- Serious Injury

The blue gradient represents the density of all crashes.

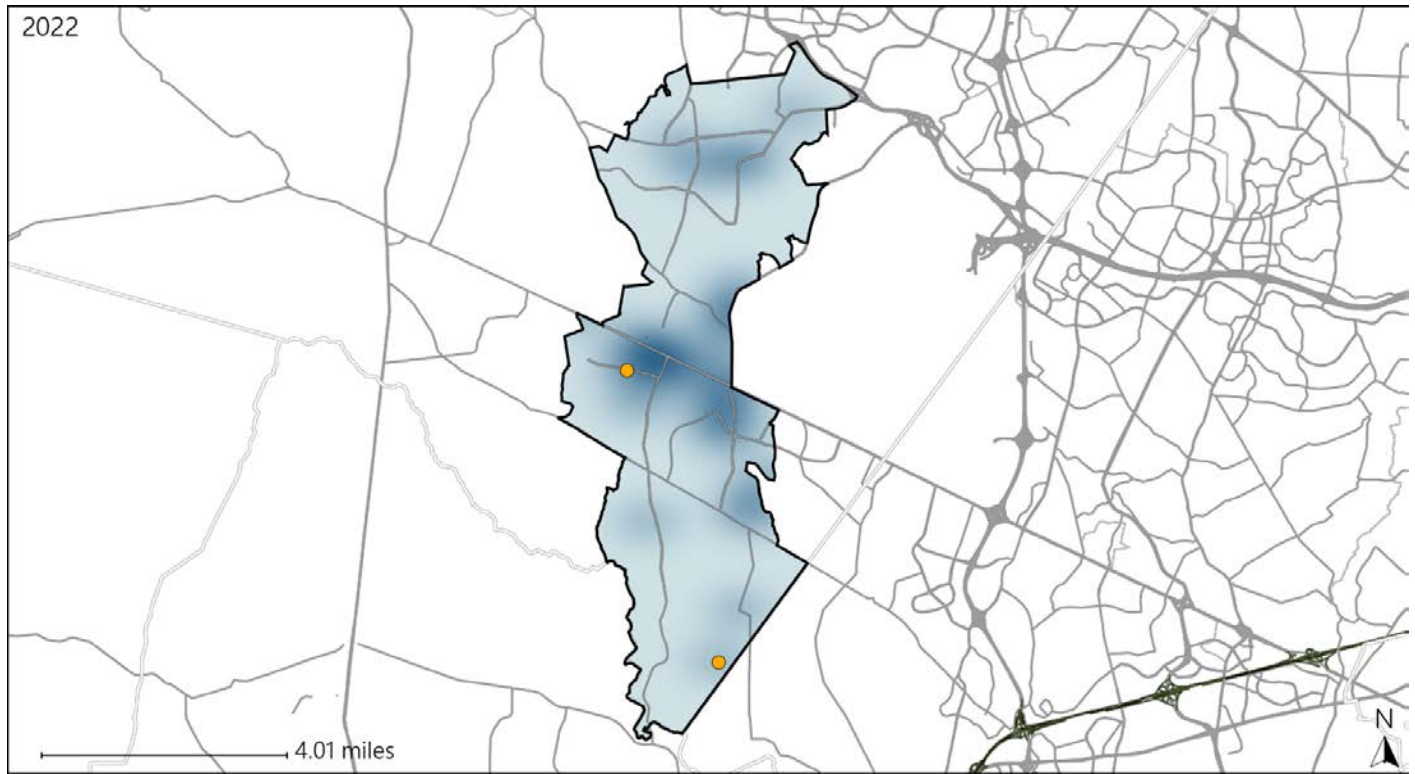


Available Crash Data - Calendar Year (CY)	CY 2019	CY 2020	CY 2021	CY 2022
Total Crashes	592	325	514	577
Fatal Crashes	2	1	1	1
Injury Crashes	138	72	124	125

Virginia House District 26 Alcohol Crash Statistics

Report Generated May, 2023

	Count	Highest Time Period(s)	Highest Day(s)	Highest Month(s)
Fatal Crashes	0	-	-	-
Resulting Fatalities	0	-	-	-
Serious Injury Crashes	2	6:00pm - 8:59pm 9:00pm - 11:59pm (100%)	Saturday • Wednesday (100%)	May • September (100%)



House District 26 Alcohol-Related Crashes

Interstate Crashes Non-interstate Crashes
 ● Fatal ● Fatal
 ⊕ Serious Injury ⊕ Serious Injury

The blue gradient represents the density of all alcohol-related crashes.

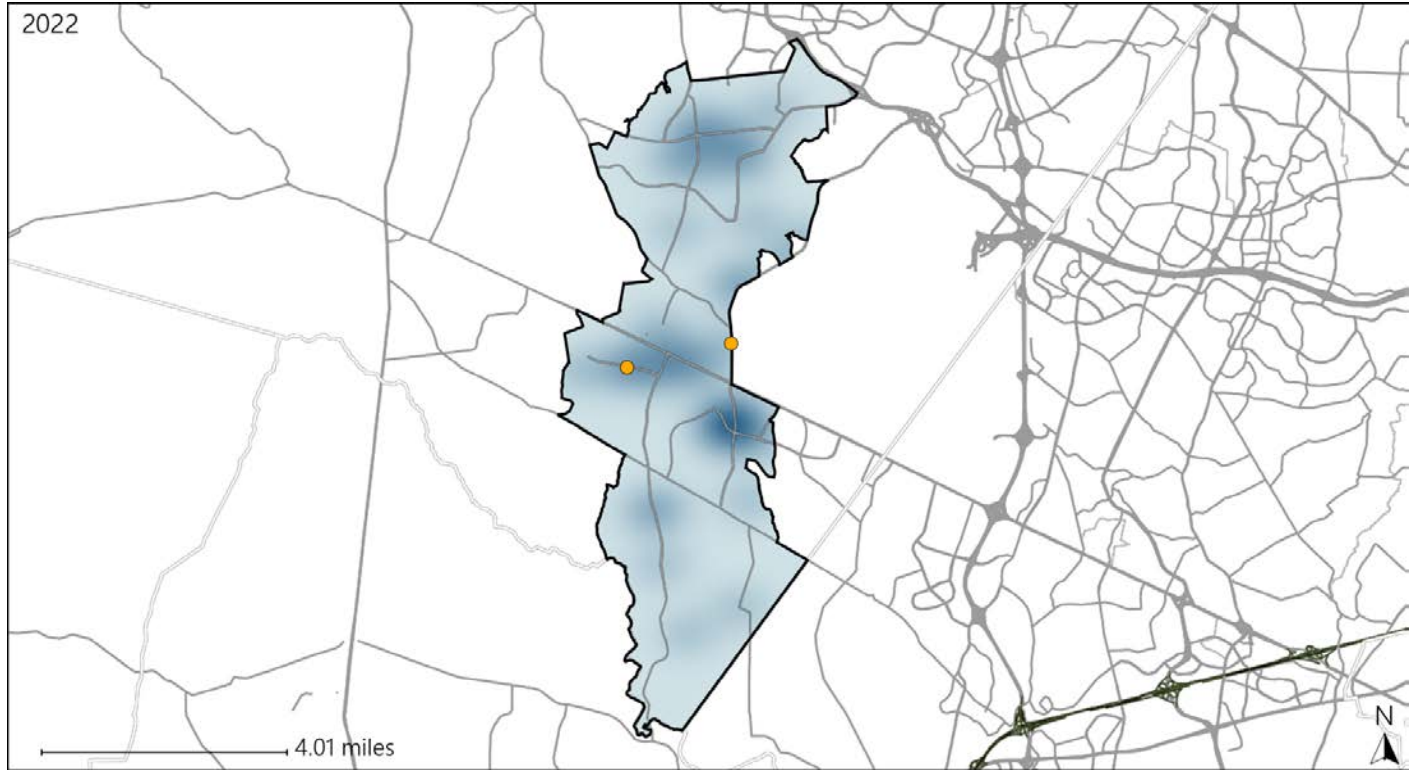


Available Crash Data - Calendar Year (CY)	CY 2019	CY 2020	CY 2021	CY 2022
Total Crashes	592	325	514	577
Fatal Crashes	2	1	1	1
Injury Crashes	138	72	124	125
Alcohol-Related Fatal Crashes	1	1	0	0
Percent of Alcohol-Related Fatal Crashes to Total Fatal Crashes	50%	100%	0%	0%
Alcohol-Related Injury Crashes	14	7	3	8
Percent of Alcohol-Related Injury Crashes to Total Injury Crashes	10%	10%	2%	6%

Virginia House District 26 Speed Crash Statistics

Report Generated May, 2023

	Count	Highest Time Period(s)	Highest Day(s)	Highest Month(s)
Fatal Crashes	0	-	-	-
Resulting Fatalities	0	-	-	-
Serious Injury Crashes	2	9:00pm - 11:59pm (100%)	Saturday • Tuesday (100%)	April • September (100%)



House District 26 Speed-Related Crashes

Interstate Crashes Non-interstate Crashes
 ● Fatal ● Fatal
 ● Serious Injury ● Serious Injury

The blue gradient represents the density of all speed-related crashes.

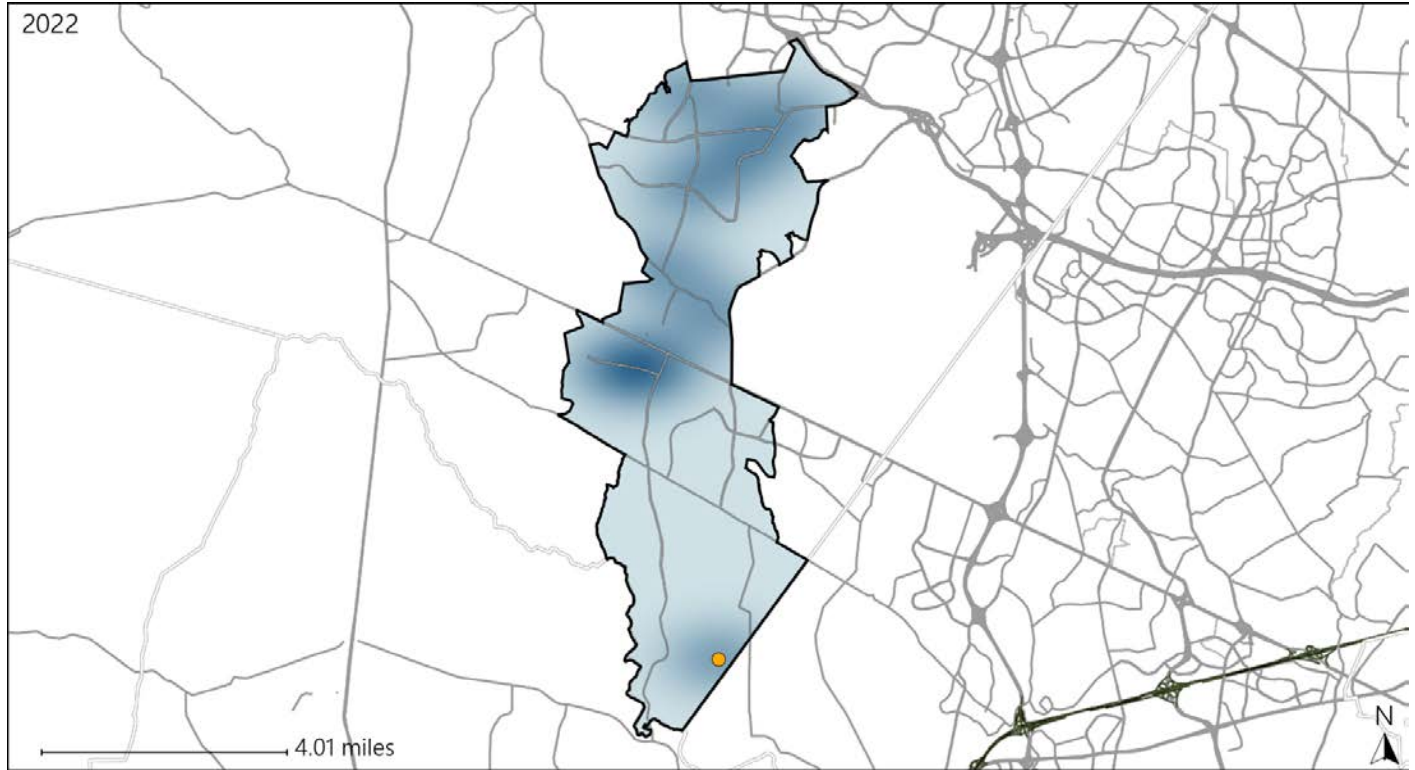


Available Crash Data - Calendar Year (CY)	CY 2019	CY 2020	CY 2021	CY 2022
Total Crashes	592	325	514	577
Fatal Crashes	2	1	1	1
Injury Crashes	138	72	124	125
Speed-Related Fatal Crashes	0	0	0	0
Percent of Speed-Related Fatal Crashes to Total Fatal Crashes	0%	0%	0%	0%
Speed-Related Injury Crashes	13	10	9	9
Percent of Speed-Related Injury Crashes to Total Injury Crashes	9%	14%	7%	7%

Virginia House District 26 Unrestrained Crash Statistics

Report Generated May, 2023

	Count	Highest Time Period(s)	Highest Day(s)	Highest Month(s)
Fatal Crashes	0	-	-	-
Unrestrained Fatalities	0	-	-	-
Serious Injury Crashes	1	6:00pm - 8:59pm (100%)	Wednesday (100%)	May (100%)



House District 26 Unrestrained-Related Crashes

Interstate Crashes

Non-interstate Crashes

● Fatal

● Fatal

● Serious Injury

● Serious Injury

The blue gradient represents the density of all unrestrained-related crashes.

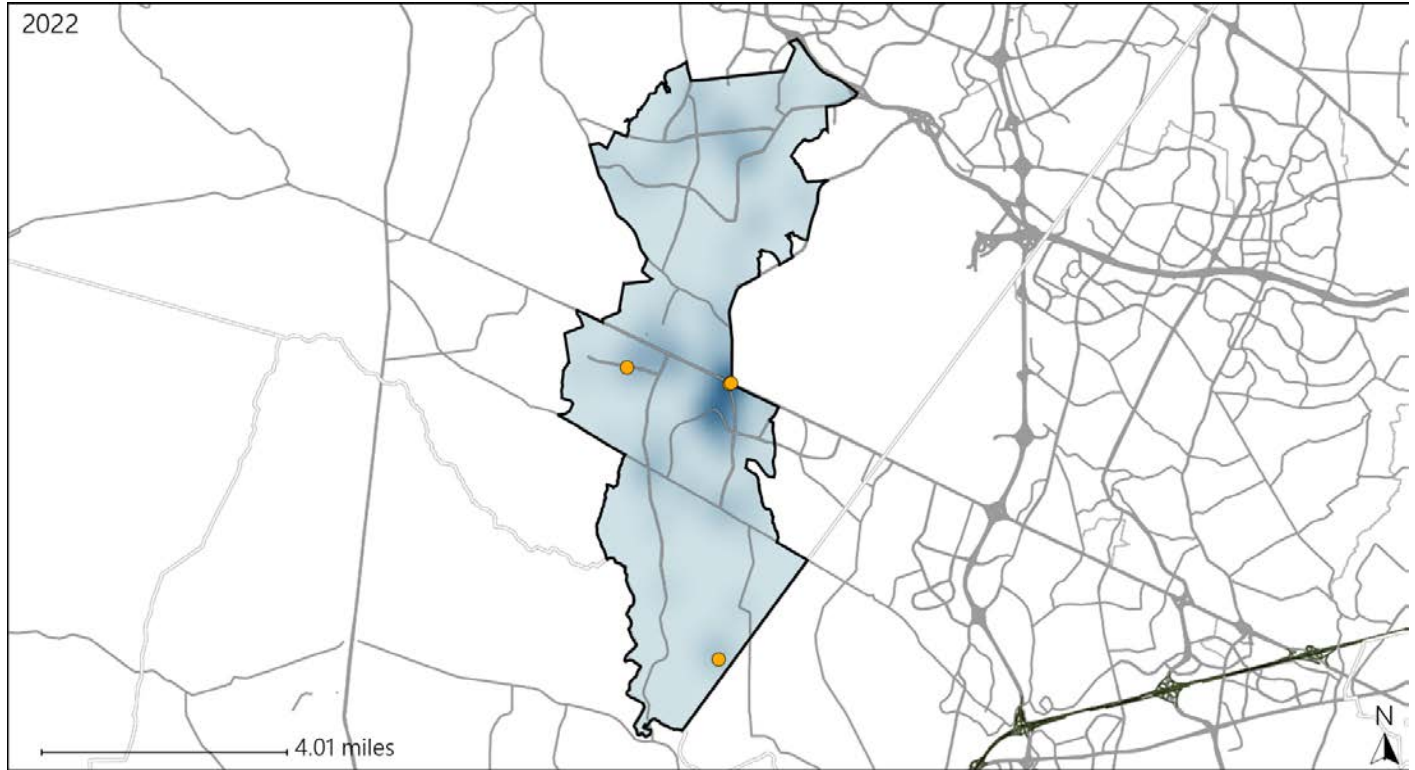


Available Crash Data - Calendar Year (CY)	CY 2019	CY 2020	CY 2021	CY 2022
Total Crashes	592	325	514	577
Fatalities	3	1	1	1
Injuries	233	125	184	203
Unrestrained Fatalities	1	0	0	0
Percent of Unrestrained Fatalities to Total Fatalities	33%	0%	0%	0%
Unrestrained Injuries	4	1	6	10
Percent of Unrestrained Injuries to Total Injuries	2%	1%	3%	5%

Virginia House District 26 Distracted Driving Crash Statistics

Report Generated May, 2023

	Count	Highest Time Period(s)	Highest Day(s)	Highest Month(s)
Fatal Crashes	0	-	-	-
Resulting Fatalities	0	-	-	-
Serious Injury Crashes	4	6:00pm - 8:59pm (50%)	Friday - Saturday (50%)	May (50%)



House District 26 Distracted Driving-Related Crashes

- | | |
|--------------------|------------------------|
| Interstate Crashes | Non-interstate Crashes |
| Fatal | Fatal |
| Serious Injury | Serious Injury |

The blue gradient represents the density of all distracted driving-related crashes.



Available Crash Data - Calendar Year (CY)	CY 2019	CY 2020	CY 2021	CY 2022
Total Crashes	592	325	514	577
Fatal Crashes	2	1	1	1
Injury Crashes	138	72	124	125
Distracted Driving-Related Fatal Crashes	0	0	0	0
Percent of Distracted Driving-Related Fatal Crashes to Total Fatal Crashes	0%	0%	0%	0%
Distracted Driving-Related Injury Crashes	30	19	23	26
Percent of Distracted Driving-Related Injury Crashes to Total Injury Crashes	22%	26%	19%	21%