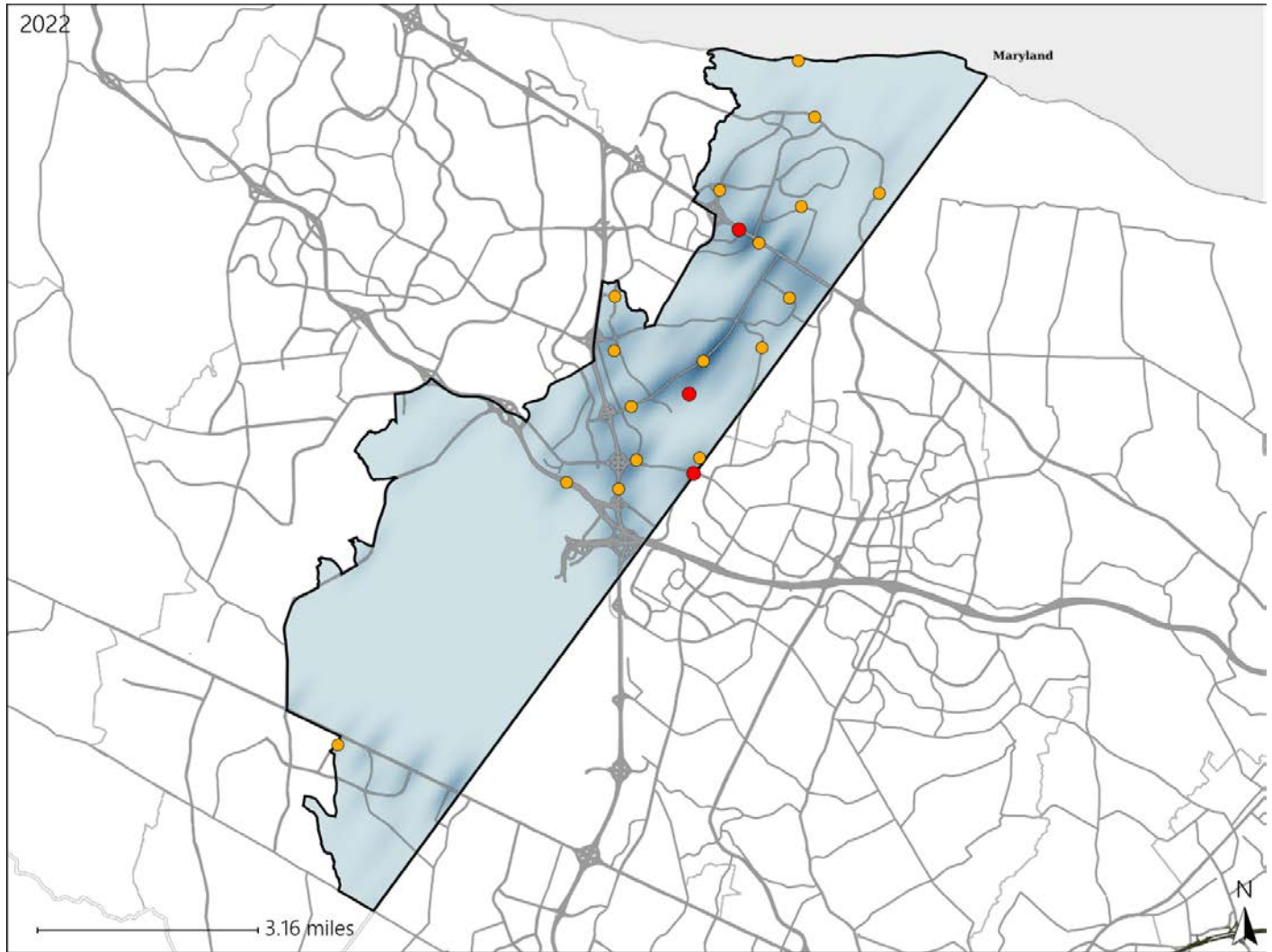


# Virginia House District 27 Crash Statistics

Report Generated May, 2023

	Count	Highest Time Period(s)	Highest Day(s)	Highest Month(s)
<b>Fatal Crashes</b>	<b>3</b>	<b>Midnight - 2:59am</b>	<b>Monday • Saturday</b>	<b>April • December</b>
<b>Resulting Fatalities</b>	<b>3</b>	(67%)	(66%)	(66%)
<b>Serious Injury Crashes</b>	<b>17</b>	<b>3:00pm - 5:59pm</b>	<b>Saturday</b>	<b>February • July</b>
		(29%)	(24%)	(36%)



## House District 27 Crashes

Interstate Crashes

- Fatal
- Serious Injury

Non-interstate Crashes

- Fatal
- Serious Injury

The blue gradient represents the density of all crashes.

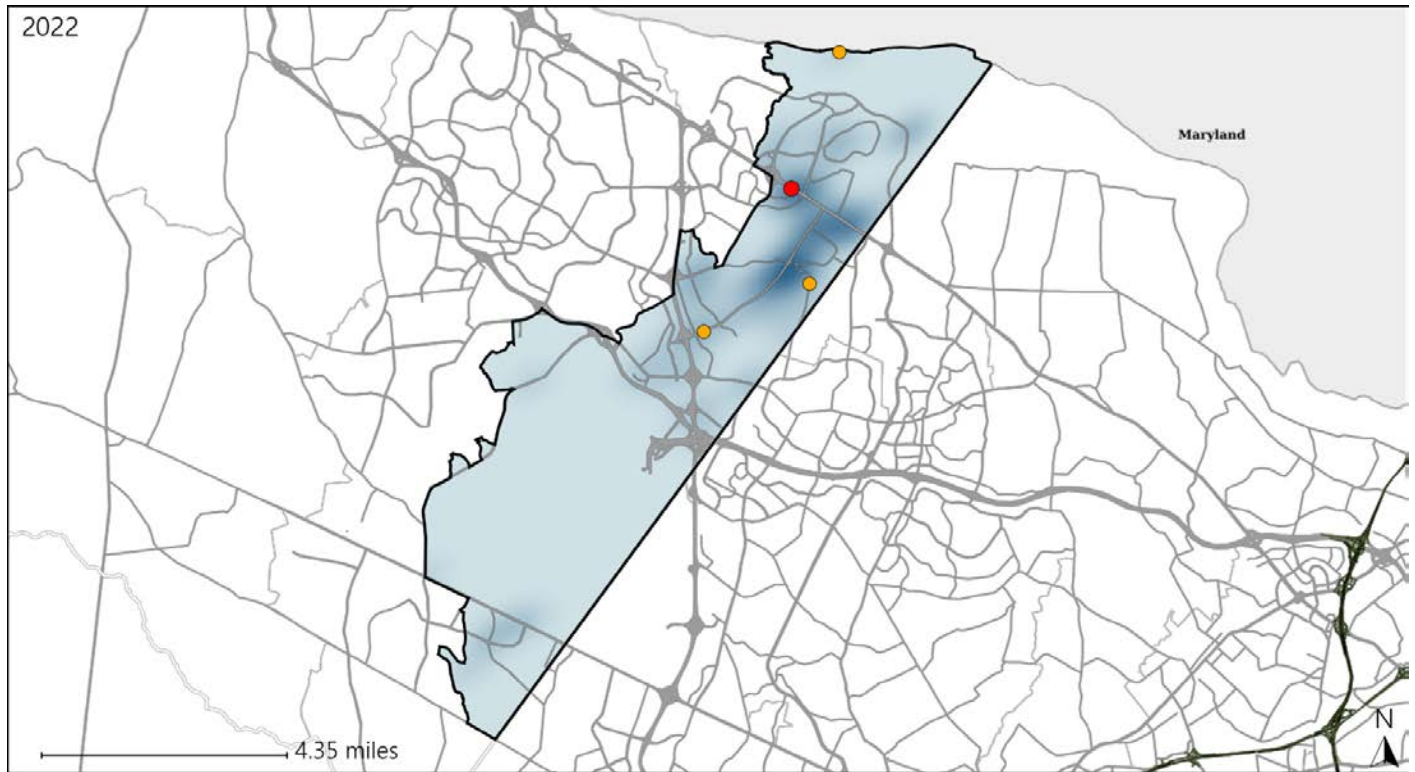


Available Crash Data - Calendar Year (CY)	CY 2019	CY 2020	CY 2021	CY 2022
<b>Total Crashes</b>	<b>1254</b>	<b>860</b>	<b>942</b>	<b>1081</b>
<b>Fatal Crashes</b>	<b>1</b>	<b>3</b>	<b>2</b>	<b>3</b>
<b>Injury Crashes</b>	<b>302</b>	<b>202</b>	<b>226</b>	<b>249</b>

# Virginia House District 27 Alcohol Crash Statistics

Report Generated May, 2023

	Count	Highest Time Period(s)	Highest Day(s)	Highest Month(s)
<b>Fatal Crashes</b>	<b>1</b>	<b>Midnight - 2:59am</b>	<b>Saturday</b>	<b>April</b>
<b>Resulting Fatalities</b>	<b>1</b>	(100%)	(100%)	(100%)
<b>Serious Injury Crashes</b>	<b>3</b>	<b>6:00pm - 8:59pm</b> <b>9:00pm - 11:59pm</b>	<b>Sunday</b>	<b>June • October</b>
		(66%)	(67%)	(66%)



## House District 27 Alcohol-Related Crashes

Interstate Crashes                      Non-interstate Crashes

- Fatal
- Serious Injury

The blue gradient represents the density of all alcohol-related crashes.

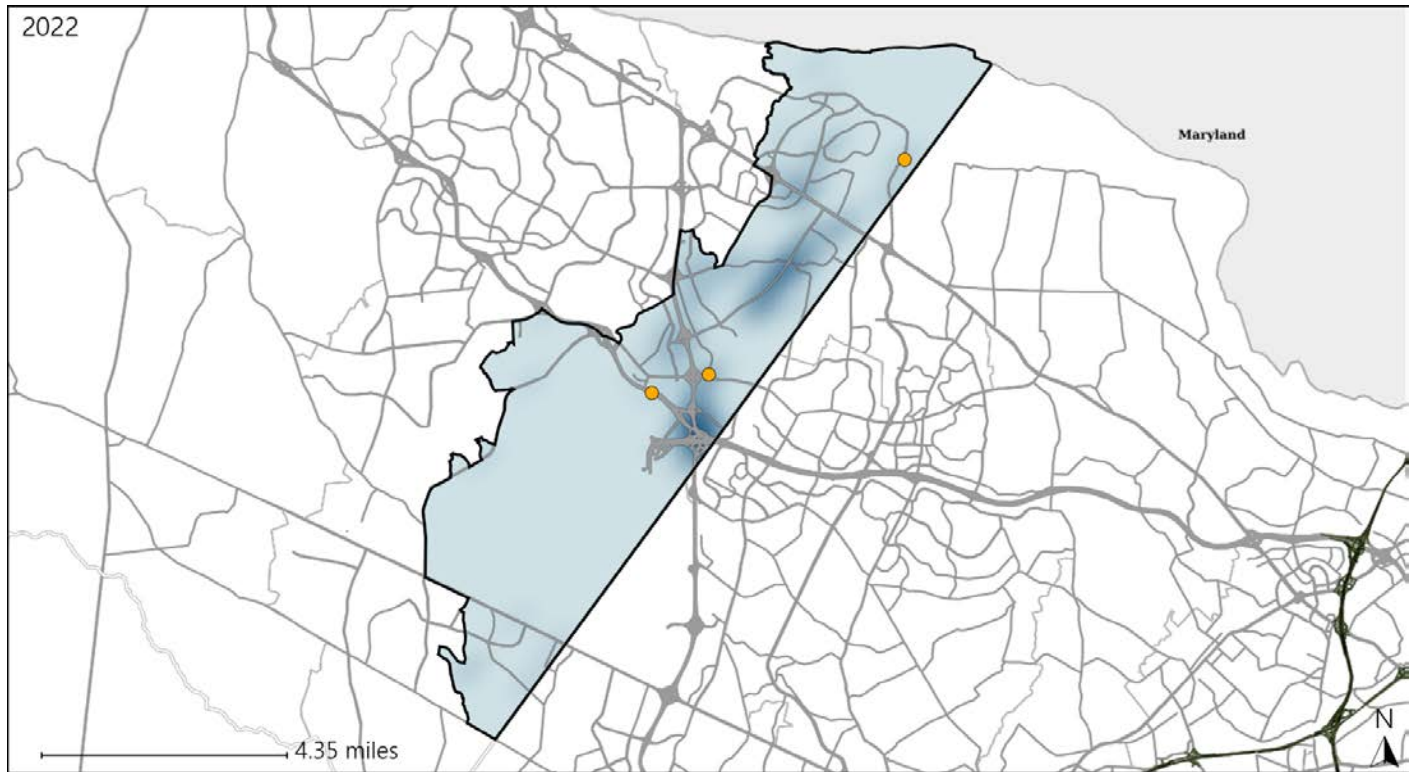


Available Crash Data - Calendar Year (CY)	CY 2019	CY 2020	CY 2021	CY 2022
Total Crashes	1254	860	942	1081
Fatal Crashes	1	3	2	3
Injury Crashes	302	202	226	249
Alcohol-Related Fatal Crashes	0	2	0	1
Percent of Alcohol-Related Fatal Crashes to Total Fatal Crashes	0%	67%	0%	33%
Alcohol-Related Injury Crashes	18	15	16	26
Percent of Alcohol-Related Injury Crashes to Total Injury Crashes	6%	7%	7%	10%

# Virginia House District 27 Speed Crash Statistics

Report Generated May, 2023

	Count	Highest Time Period(s)	Highest Day(s)	Highest Month(s)
<b>Fatal Crashes</b>	<b>0</b>	-	-	-
<b>Resulting Fatalities</b>	<b>0</b>	-	-	-
<b>Serious Injury Crashes</b>	<b>3</b>	3:00pm - 5:59pm 6:00pm - 8:59pm (66%)	Friday • Monday (66%)	August • January (66%)



## House District 27 Speed-Related Crashes

Interstate Crashes                      Non-interstate Crashes  
 ● Fatal                                      ● Fatal  
 ⊕ Serious Injury                          ● Serious Injury

The blue gradient represents the density of all speed-related crashes.

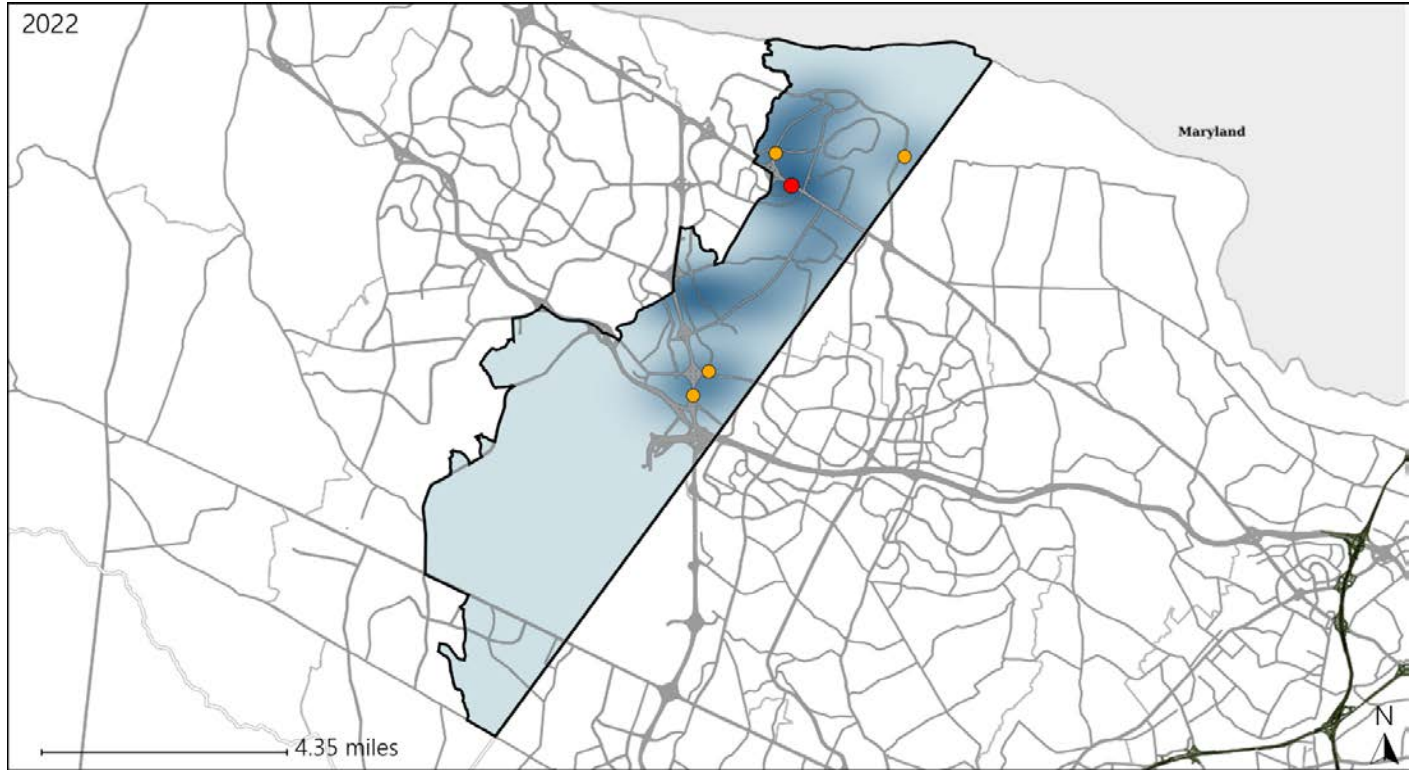


Available Crash Data - Calendar Year (CY)	CY 2019	CY 2020	CY 2021	CY 2022
Total Crashes	1254	860	942	1081
Fatal Crashes	1	3	2	3
Injury Crashes	302	202	226	249
Speed-Related Fatal Crashes	1	1	1	0
Percent of Speed-Related Fatal Crashes to Total Fatal Crashes	100%	33%	50%	0%
Speed-Related Injury Crashes	51	20	24	31
Percent of Speed-Related Injury Crashes to Total Injury Crashes	17%	10%	11%	12%

# Virginia House District 27 Unrestrained Crash Statistics

Report Generated May, 2023

	Count	Highest Time Period(s)	Highest Day(s)	Highest Month(s)
<b>Fatal Crashes</b>	<b>1</b>	<b>Midnight - 2:59am</b>	<b>Saturday</b>	<b>April</b>
<b>Unrestrained Fatalities</b>	<b>1</b>	<b>(100%)</b>	<b>(100%)</b>	<b>(100%)</b>
<b>Serious Injury Crashes</b>	<b>4</b>	<b>3:00pm - 5:59pm</b>	<b>Monday</b>	<b>August</b>
		<b>(75%)</b>	<b>(75%)</b>	<b>(50%)</b>



### House District 27 Unrestrained-Related Crashes

- |                    |                        |
|--------------------|------------------------|
| Interstate Crashes | Non-interstate Crashes |
| Fatal              | Fatal                  |
| Serious Injury     | Serious Injury         |

The blue gradient represents the density of all unrestrained-related crashes.



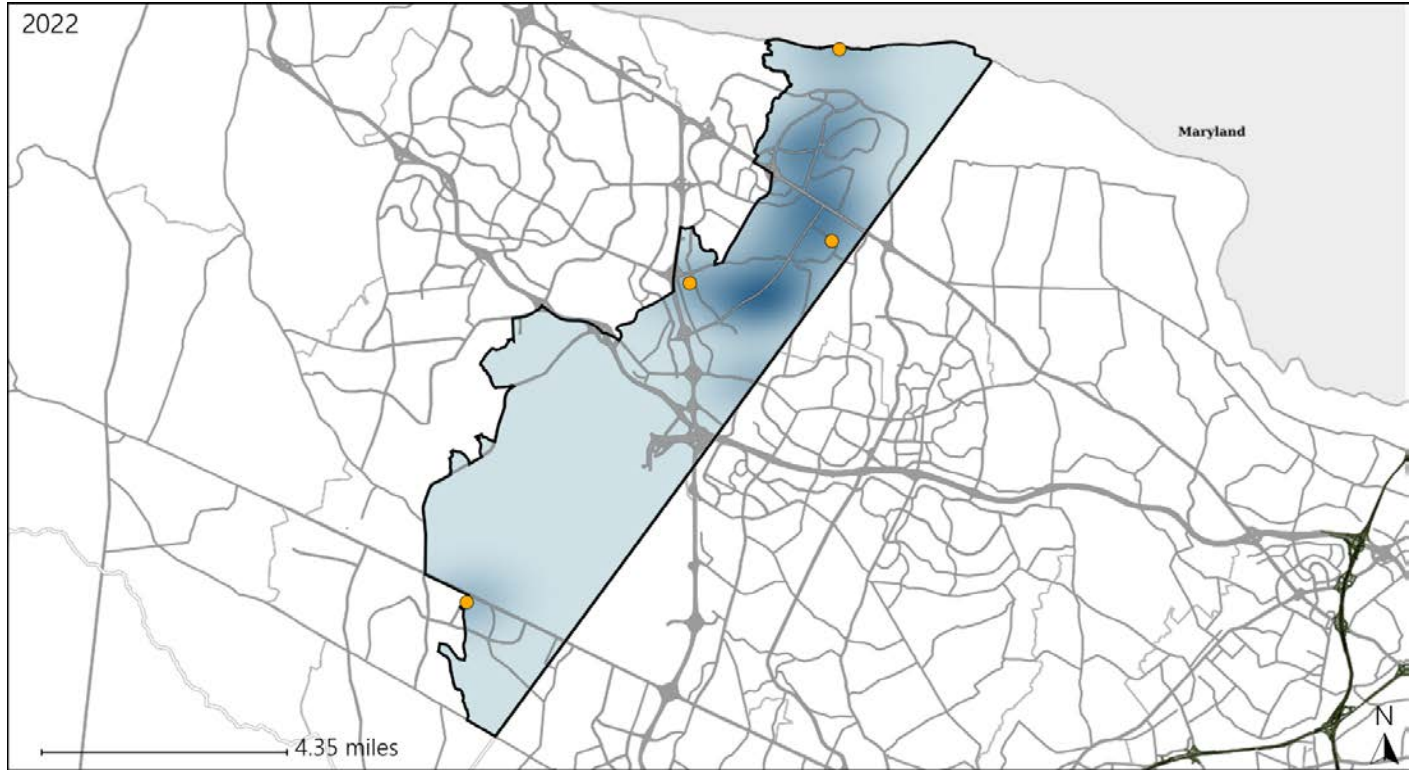
Available Crash Data - Calendar Year (CY)	CY 2019	CY 2020	CY 2021	CY 2022
<b>Total Crashes</b>	<b>1254</b>	<b>860</b>	<b>942</b>	<b>1081</b>
<b>Fatalities</b>	<b>1</b>	<b>3</b>	<b>2</b>	<b>3</b>
<b>Injuries</b>	<b>502</b>	<b>303</b>	<b>369</b>	<b>435</b>
<b>Unrestrained Fatalities</b>	<b>0</b>	<b>1</b>	<b>0</b>	<b>1</b>
<b>Percent of Unrestrained Fatalities to Total Fatalities</b>	<b>0%</b>	<b>33%</b>	<b>0%</b>	<b>33%</b>
<b>Unrestrained Injuries</b>	<b>17</b>	<b>14</b>	<b>15</b>	<b>14</b>
<b>Percent of Unrestrained Injuries to Total Injuries</b>	<b>3%</b>	<b>5%</b>	<b>4%</b>	<b>3%</b>



# Virginia House District 27 Pedestrian Crash Statistics

Report Generated May, 2023

	Count	Highest Time Period(s)	Highest Day(s)	Highest Month(s)
<b>Fatal Crashes</b>	0	-	-	-
<b>Pedestrian Fatalities</b>	0	-	-	-
<b>Serious Injury Crashes</b>	4	9:00pm - 11:59pm (50%)	Saturday (50%)	September (50%)



## House District 27 Pedestrian-Related Crashes

- |  |  |
|--|--|
| Interstate Crashes   | Non-interstate Crashes   |
|  Fatal          |  Fatal          |
|  Serious Injury |  Serious Injury |

The blue gradient represents the density of all pedestrian-related crashes.

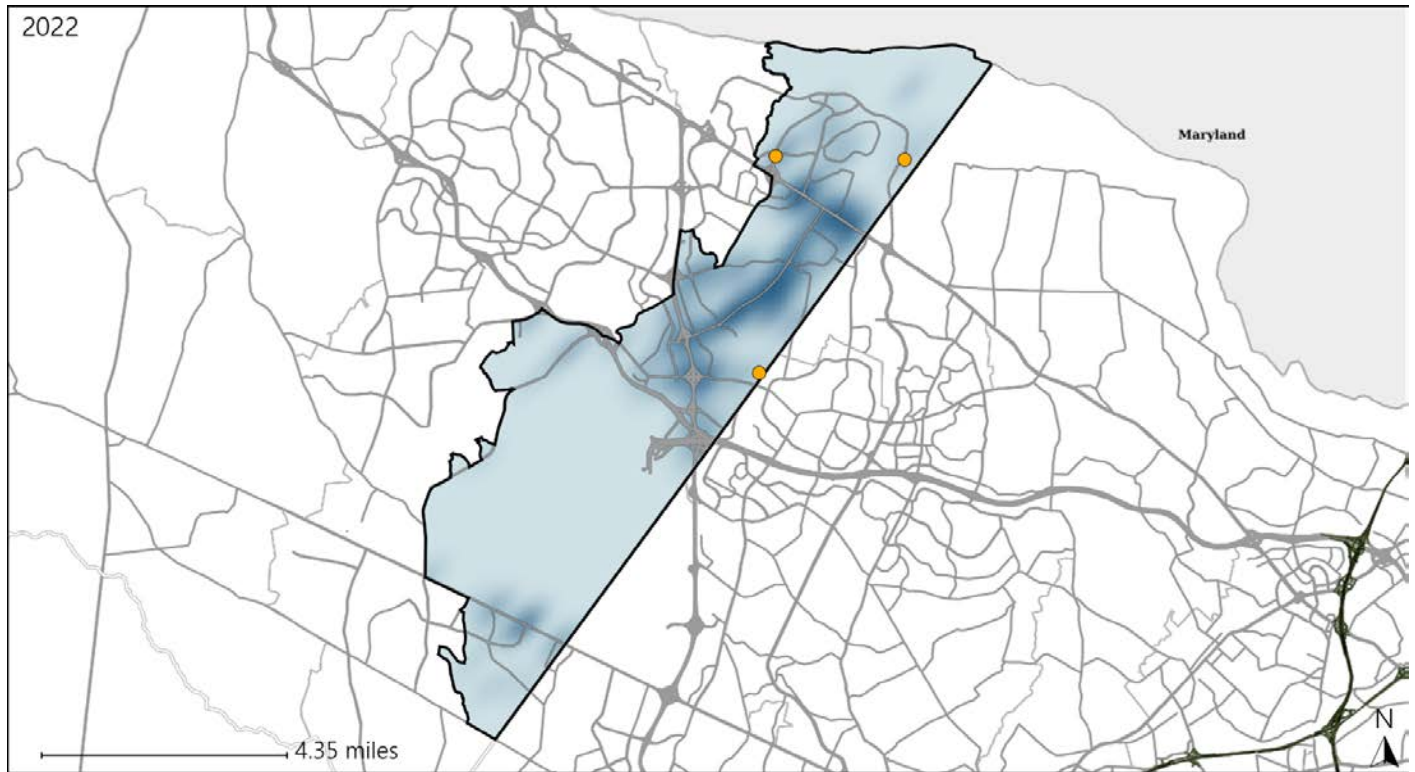


Available Crash Data - Calendar Year (CY)	CY 2019	CY 2020	CY 2021	CY 2022
Total Crashes	1254	860	942	1081
Fatal Crashes	1	3	2	3
Injury Crashes	302	202	226	249
Pedestrian-Related Fatal Crashes	0	1	0	0
Percent of Pedestrian-Related Fatal Crashes to Total Fatal Crashes	0%	33%	0%	0%
Pedestrian-Related Injury Crashes	15	18	11	14
Percent of Pedestrian-Related Injury Crashes to Total Injury Crashes	5%	9%	5%	6%

# Virginia House District 27 Distracted Driving Crash Statistics

Report Generated May, 2023

	Count	Highest Time Period(s)	Highest Day(s)	Highest Month(s)
<b>Fatal Crashes</b>	<b>0</b>	-	-	-
<b>Resulting Fatalities</b>	<b>0</b>	-	-	-
<b>Serious Injury Crashes</b>	<b>3</b>	3:00pm - 5:59pm 6:00pm - 8:59pm (66%)	Monday (67%)	August + January (66%)



## House District 27 Distracted Driving-Related Crashes

- |                    |                        |
|--------------------|------------------------|
| Interstate Crashes | Non-interstate Crashes |
| ● Fatal            | ● Fatal                |
| ⊕ Serious Injury   | ● Serious Injury       |

The blue gradient represents the density of all distracted driving-related crashes.



Available Crash Data - Calendar Year (CY)	CY 2019	CY 2020	CY 2021	CY 2022
Total Crashes	1254	860	942	1081
Fatal Crashes	1	3	2	3
Injury Crashes	302	202	226	249
Distracted Driving-Related Fatal Crashes	0	0	0	0
Percent of Distracted Driving-Related Fatal Crashes to Total Fatal Crashes	0%	0%	0%	0%
Distracted Driving-Related Injury Crashes	70	44	51	39
Percent of Distracted Driving-Related Injury Crashes to Total Injury Crashes	23%	22%	23%	16%