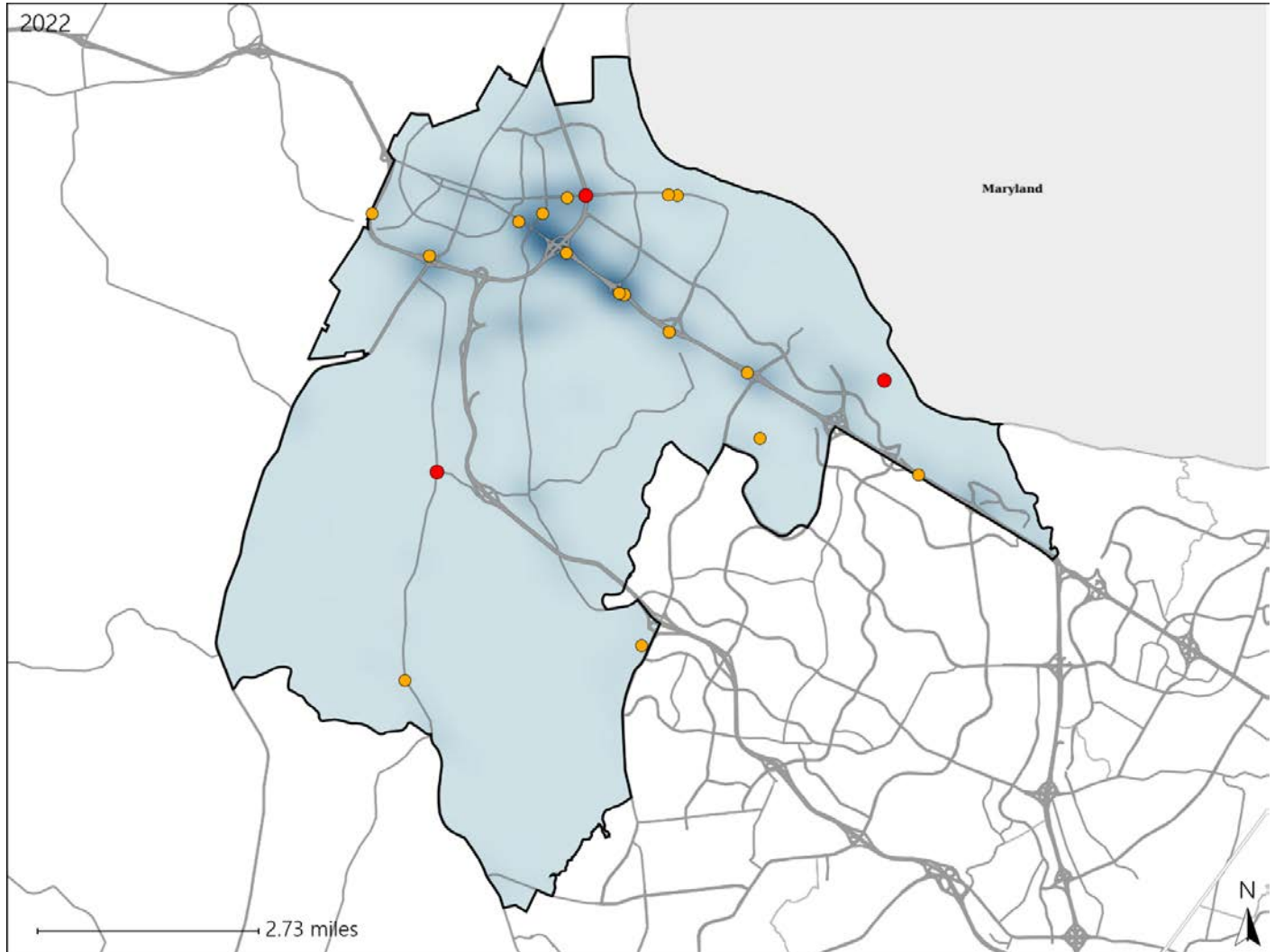


# Virginia House District 29 Crash Statistics

Report Generated May, 2023

	Count	Highest Time Period(s)	Highest Day(s)	Highest Month(s)
<b>Fatal Crashes</b>	<b>3</b>	<b>6:00pm - 8:59pm</b>	<b>Saturday • Sunday</b>	<b>August • July</b>
<b>Resulting Fatalities</b>	<b>3</b>	<b>Midnight - 2:59am</b> (66%)	<b>(66%)</b>	<b>(66%)</b>
<b>Serious Injury Crashes</b>	<b>16</b>	<b>9:00pm - 11:59pm</b> (31%)	<b>Monday • Saturday</b> (50%)	<b>April • October</b> (38%)



## House District 29 Crashes

Interstate Crashes

- Fatal
- Serious Injury

Non-interstate Crashes

- Fatal
- Serious Injury

The blue gradient represents the density of all crashes.

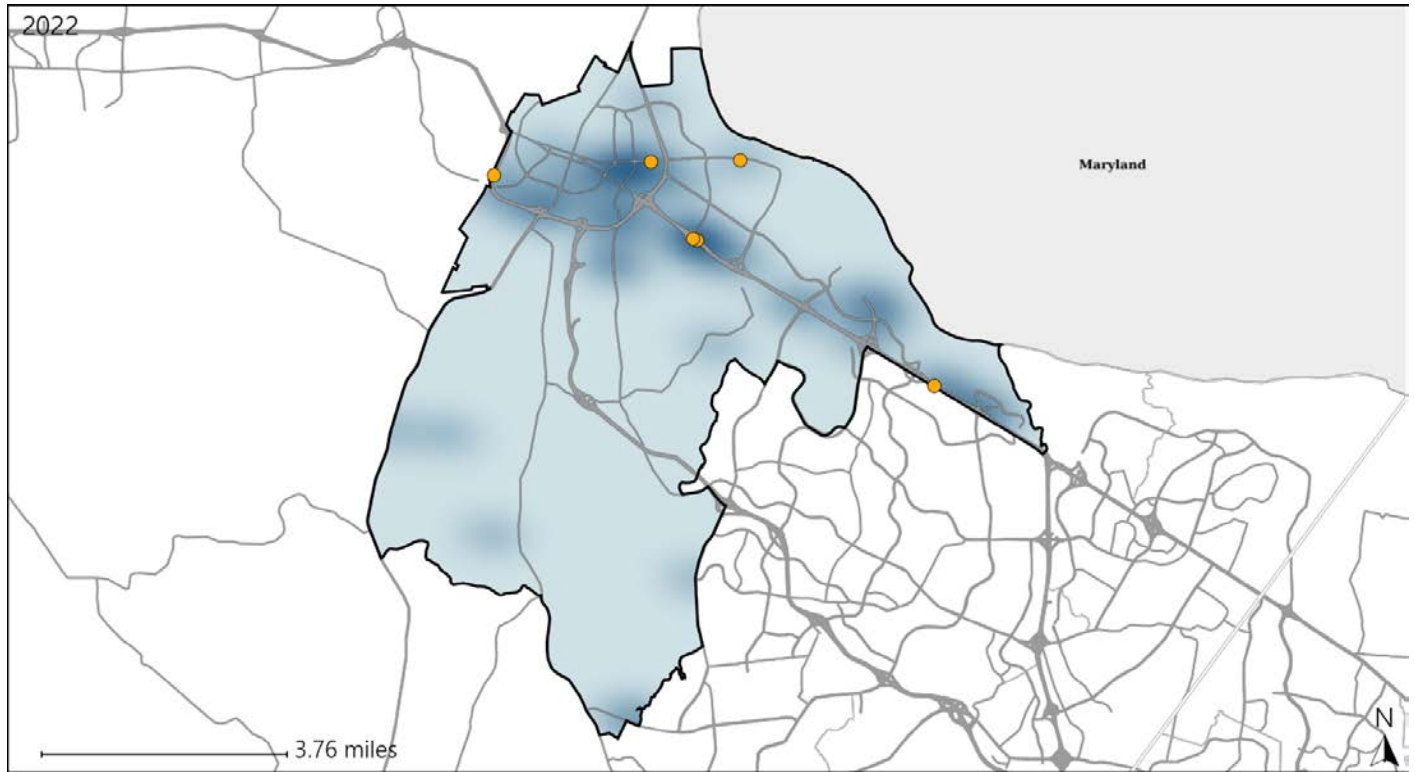


Available Crash Data - Calendar Year (CY)	CY 2019	CY 2020	CY 2021	CY 2022
Total Crashes	960	737	837	887
Fatal Crashes	1	3	1	3
Injury Crashes	272	188	204	192

# Virginia House District 29 Alcohol Crash Statistics

Report Generated May, 2023

	Count	Highest Time Period(s)	Highest Day(s)	Highest Month(s)
<b>Fatal Crashes</b>	0	-	-	-
<b>Resulting Fatalities</b>	0	-	-	-
<b>Serious Injury Crashes</b>	6	9:00pm - 11:59pm (50%)	Saturday (50%)	October (33%)



### House District 29 Alcohol-Related Crashes

Interstate Crashes

Non-interstate Crashes

- Fatal
- Serious Injury

- Fatal
- Serious Injury

The blue gradient represents the density of all alcohol-related crashes.

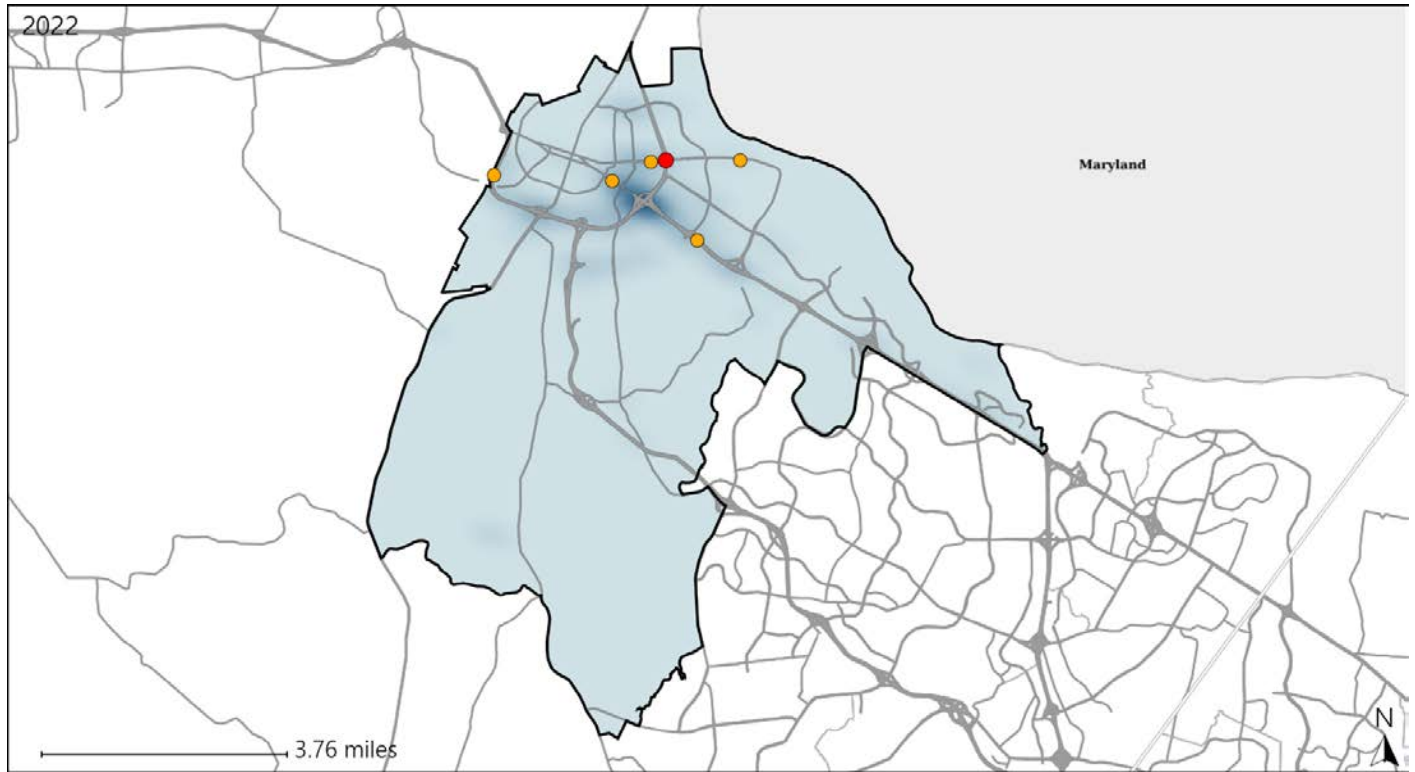


Available Crash Data - Calendar Year (CY)	CY 2019	CY 2020	CY 2021	CY 2022
Total Crashes	960	737	837	887
Fatal Crashes	1	3	1	3
Injury Crashes	272	188	204	192
Alcohol-Related Fatal Crashes	0	1	0	0
Percent of Alcohol-Related Fatal Crashes to Total Fatal Crashes	0%	33%	0%	0%
Alcohol-Related Injury Crashes	10	13	15	16
Percent of Alcohol-Related Injury Crashes to Total Injury Crashes	4%	7%	7%	8%





# Virginia House District 29 Speed Crash Statistics

Report Generated May, 2023

	Count	Highest Time Period(s)	Highest Day(s)	Highest Month(s)
<b>Fatal Crashes</b>	<b>1</b>	<b>Midnight - 2:59am</b>	<b>Saturday</b>	<b>July</b>
<b>Resulting Fatalities</b>	<b>1</b>	(100%)	(100%)	(100%)
<b>Serious Injury Crashes</b>	<b>5</b>	<b>9:00pm - 11:59pm</b>	<b>Monday</b>	<b>October</b>
		(40%)	(40%)	(40%)



## House District 29 Speed-Related Crashes

Interstate Crashes                      Non-interstate Crashes  
 Fatal                                       Fatal  
 Serious Injury                               Serious Injury

The blue gradient represents the density of all speed-related crashes.

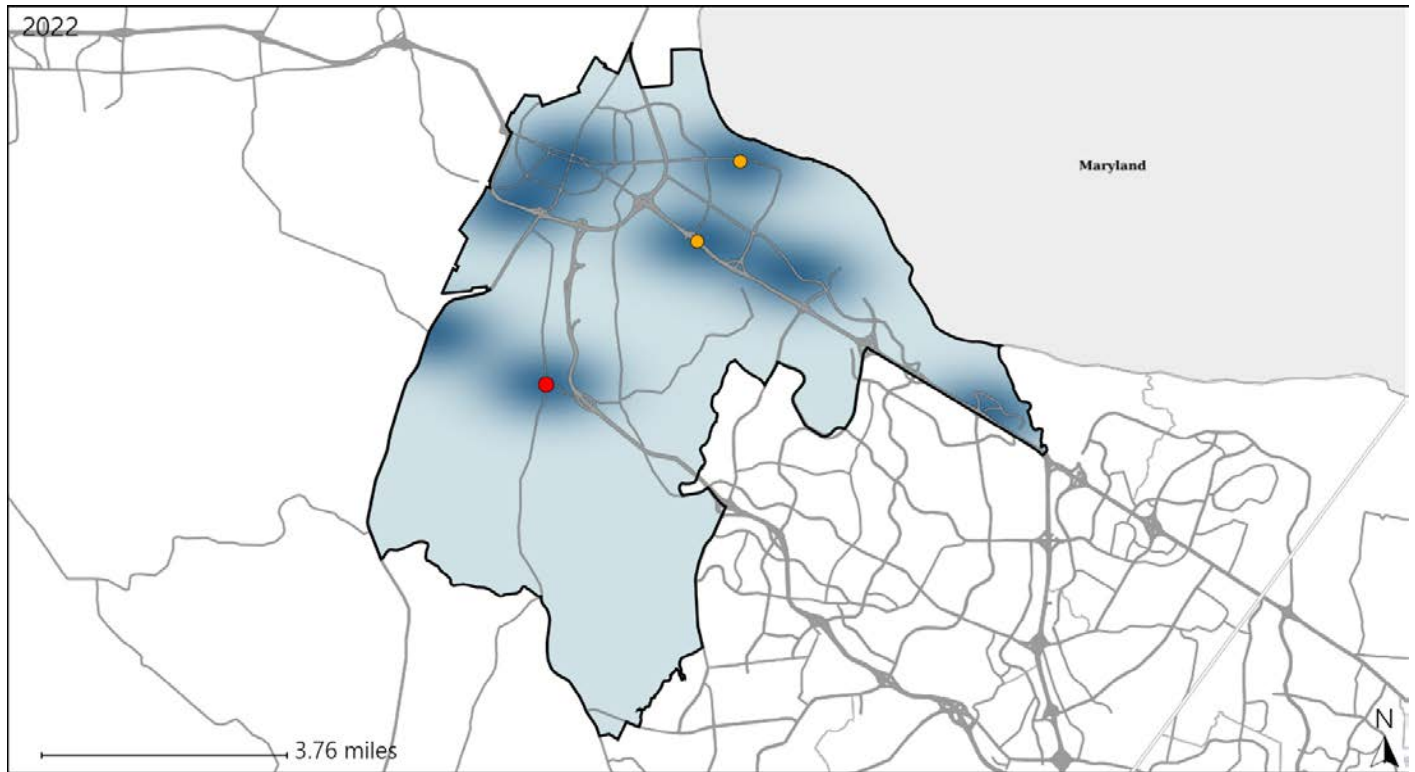


Available Crash Data - Calendar Year (CY)	CY 2019	CY 2020	CY 2021	CY 2022
<b>Total Crashes</b>	<b>960</b>	<b>737</b>	<b>837</b>	<b>887</b>
<b>Fatal Crashes</b>	<b>1</b>	<b>3</b>	<b>1</b>	<b>3</b>
<b>Injury Crashes</b>	<b>272</b>	<b>188</b>	<b>204</b>	<b>192</b>
<b>Speed-Related Fatal Crashes</b>	<b>0</b>	<b>1</b>	<b>0</b>	<b>1</b>
<b>Percent of Speed-Related Fatal Crashes to Total Fatal Crashes</b>	<b>0%</b>	<b>33%</b>	<b>0%</b>	<b>33%</b>
<b>Speed-Related Injury Crashes</b>	<b>49</b>	<b>28</b>	<b>45</b>	<b>34</b>
<b>Percent of Speed-Related Injury Crashes to Total Injury Crashes</b>	<b>18%</b>	<b>15%</b>	<b>22%</b>	<b>18%</b>

# Virginia House District 29 Unrestrained Crash Statistics

Report Generated May, 2023

	Count	Highest Time Period(s)	Highest Day(s)	Highest Month(s)
<b>Fatal Crashes</b>	<b>1</b>	<b>6:00pm - 8:59pm</b>	<b>Sunday</b>	<b>June</b>
<b>Unrestrained Fatalities</b>	<b>1</b>	<b>(100%)</b>	<b>(100%)</b>	<b>(100%)</b>
<b>Serious Injury Crashes</b>	<b>2</b>	<b>3:00am - 5:59am 9:00pm - 11:59pm</b>	<b>Friday • Saturday</b>	<b>December • June</b>
		<b>(100%)</b>	<b>(100%)</b>	<b>(100%)</b>



### House District 29 Unrestrained-Related Crashes

- |                    |                        |
|--------------------|------------------------|
| Interstate Crashes | Non-interstate Crashes |
| ● Fatal            | ● Fatal                |
| ⊕ Serious Injury   | ⊕ Serious Injury       |

The blue gradient represents the density of all unrestrained-related crashes.

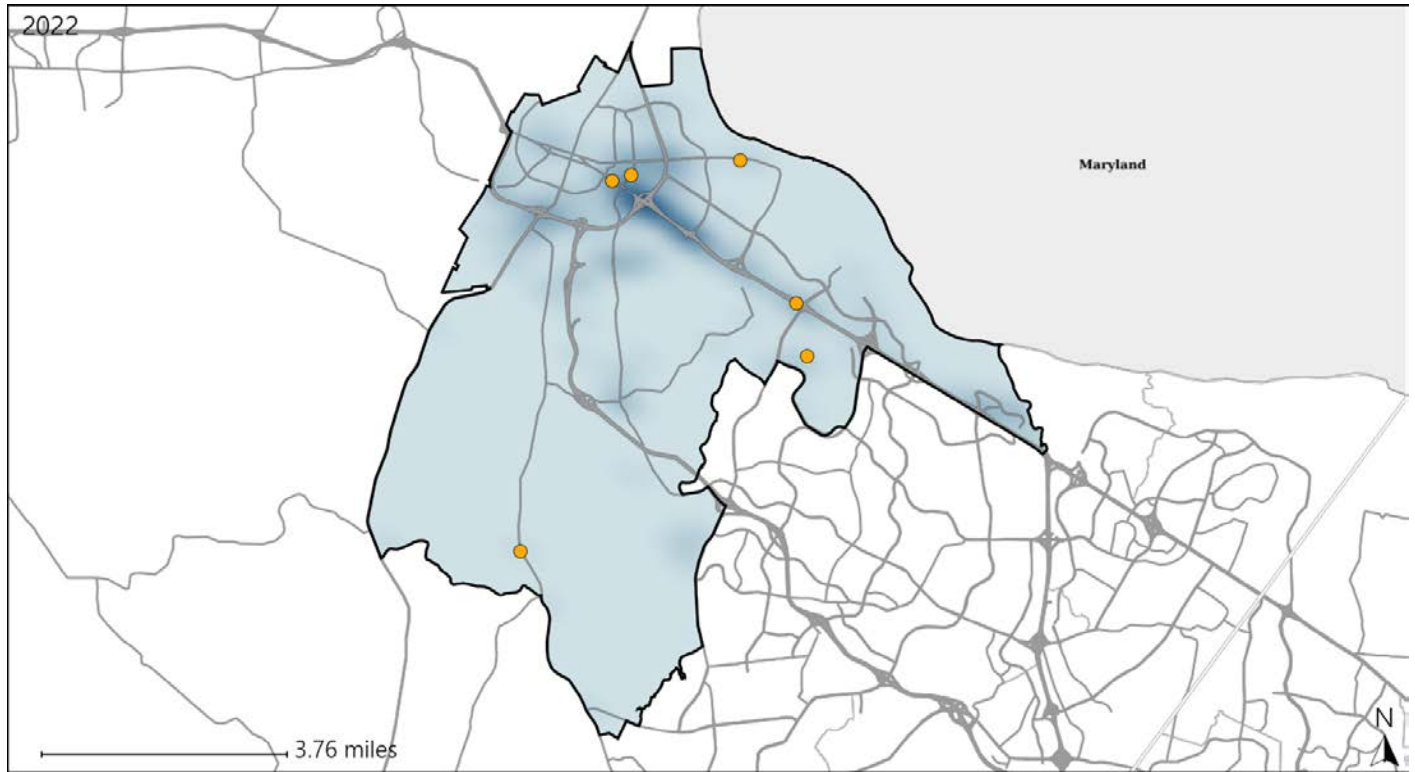


Available Crash Data - Calendar Year (CY)	CY 2019	CY 2020	CY 2021	CY 2022
<b>Total Crashes</b>	<b>960</b>	<b>737</b>	<b>837</b>	<b>887</b>
<b>Fatalities</b>	<b>1</b>	<b>3</b>	<b>1</b>	<b>3</b>
<b>Injuries</b>	<b>429</b>	<b>286</b>	<b>331</b>	<b>304</b>
<b>Unrestrained Fatalities</b>	<b>0</b>	<b>0</b>	<b>0</b>	<b>1</b>
<b>Percent of Unrestrained Fatalities to Total Fatalities</b>	<b>0%</b>	<b>0%</b>	<b>0%</b>	<b>33%</b>
<b>Unrestrained Injuries</b>	<b>11</b>	<b>17</b>	<b>7</b>	<b>7</b>
<b>Percent of Unrestrained Injuries to Total Injuries</b>	<b>3%</b>	<b>6%</b>	<b>2%</b>	<b>2%</b>

# Virginia House District 29 Distracted Driving Crash Statistics

Report Generated May, 2023

	Count	Highest Time Period(s)	Highest Day(s)	Highest Month(s)
<b>Fatal Crashes</b>	0	-	-	-
<b>Resulting Fatalities</b>	0	-	-	-
<b>Serious Injury Crashes</b>	6	6:00pm - 8:59pm (50%)	Friday (33%)	February (33%)



## House District 29 Distracted Driving-Related Crashes

- |  |  |
|--|--|
| Interstate Crashes                                   | Non-interstate Crashes                               |
| <span style="color: red;">●</span> Fatal             | <span style="color: red;">●</span> Fatal             |
| <span style="color: orange;">●</span> Serious Injury | <span style="color: orange;">●</span> Serious Injury |

The blue gradient represents the density of all distracted driving-related crashes.



Available Crash Data - Calendar Year (CY)	CY 2019	CY 2020	CY 2021	CY 2022
Total Crashes	960	737	837	887
Fatal Crashes	1	3	1	3
Injury Crashes	272	188	204	192
Distracted Driving-Related Fatal Crashes	1	1	0	0
Percent of Distracted Driving-Related Fatal Crashes to Total Fatal Crashes	100%	33%	0%	0%
Distracted Driving-Related Injury Crashes	80	56	45	46
Percent of Distracted Driving-Related Injury Crashes to Total Injury Crashes	29%	30%	22%	24%